

NETTUNO

EXECUTION WITH UNDERDRIVEN OPERATOR

No part of this publication may be reproduced or translated, even in part, without prior written permission from WITTUR. Subject to change without notice!



NETTUNO

INDEX

CONTENTS	PAGE
• Index	2
• Underdriven car door features	3
• Underdriven landing door features	4
• Range dimensions	5
• The elevator doors as an aesthetical element	6
• Type 01-02/U, max overall dimensions	8
Vertical section for glass panels with visible and hidden trims	9
Vertical section for sheet metal panels/framed glass panels	10
Fixing points	11
• Type 41-42/U and 11-12/U, imax overall dimensions	12
Vertical section for glass panels with visible and hidden trims	13
Vertical section for sheet metal panels/framed glass panels	14
Fixing points 41-42/U	15
Fixing points 11-12/U	16

NETTUNO

UNDERDRIVEN CAR DOOR FEATURES



Straight underdriven operator

- Mechanism completely covered (apart the back side, optional)
- Upper guide completely in Stainless Steel (or other material on request)
- Stainless Steel sill (or other material on request)
- Coupling system with retractable cam / fix cam
- PLUS belt motorization with MIDI or SUPRA controller
- Frequency control speed regulation
- Car door locking device integrated in the retractable cam (optional)

Panels

- Steel panels, single or double skinned
- Glass framed
- Full Glass with:
 - Visible trims in the top and in the bottom
 - Visible trim only in the bottom
 - Without any trim (hidden)

Options

- Water proof execution IP54
- Air-Water partial protection with sealing gaskets (optional)
- Special finishing available on demand
- Heated sill
- Light curtain WSE Evo (EN 81-20/50 compliant)
- Hidden sill
- Full inox execution
- Special execution for inclined lifts

NETTUNO

UNDERDRIVEN LANDING DOOR FEATURES



Straight underdriven landing door

- Mechanism completely covered (apart the back side, optional)
- Upper guide completely in Stainless Steel (or other material on request)
- Stainless Steel sill (or other material on request)
- Hidden re-closing system (reel system)
- Emergency device:
 - Mounted on the bottom part of side architraves
 - With flexible wire (more adaptable on site)
 - Integrated in the sill (optional, valid only for full glass panels).

Panels and Architraves

- Steel panels, single or double skinned
- Vetro incorniciato
- Full Glass with:
 - Visible trims in the top and in the bottom
 - Visible trim only in the bottom
 - Without any trim (hidden)
- Standard Architraves (120+120+120, different size available on request)
- Lock certificate: EN 81-1/2; Custom Union, Australia; ASME A17.1; EN 81-20/50; Korea
- Fire protection EN81-58 E90/120-EI60, BS476-22 E120 steelworks panels, EN 81-58 E90-E120-EI60, BS476-22 E120 glass framed panels

Options

- Water proof execution (optional IP54 or up to IP67)
- Air-Water partial protection with sealing gaskets (optional)
- Motorized landing door
- Heated sill
- Framed glass entrance
- Hidden sill
- Full inox execution
- Special execution for inclined lifts

NETTUNO

UNDERDRIVEN CAR DOOR

FULL GLASS PANELS



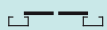

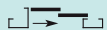

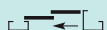



METAL SHEET PANELS



GLASS-FRAMED PANELS



SERIES 3203 - NETTUNO

Landing doors			Car doors			C.O.		C.H.	
Type	Illustration	Sill	Type	Illustration	Sill	Min.	Max.	Min.	Max.**
01/U		75	02/U		75	700	1400	2000	3100
11/RU		120	12/RU		120	700	1400	2000	3100
11/LU		120	12/LU		120	700	1400	2000	3100
41/U		120	42/U		120	750	2000	2000	3100

**L.H. depends on C.O.

For other requests, please verify with Technical Dept.

The elevator door as an aesthetical element in the architectural project of a building



Photo: courtesy of SARM Ascensori.

- The elevator system can be the distinctive element of a building both for modernizations and new installations projects.
- Wide range of customized solutions: recent technical developments allow to overcome many structural limits that reduced available elevator systems solutions.

The elevator door as an aesthetical element in the architectural project of a building

DOORS TECHNOLOGY

- Full-glass panels
- High aesthetic impact with full-glass frames for a totally panoramic system
- Frames without metal outlines
- Doors design suitable both for modern and prestigious locations
- Customized dimensions and finishes available for special projects.



HIDDEN SILL

- Guarantee of an aesthetical and functional continuity between landing and car floor.
- Simplified cleaning and maintenance of the elevator.

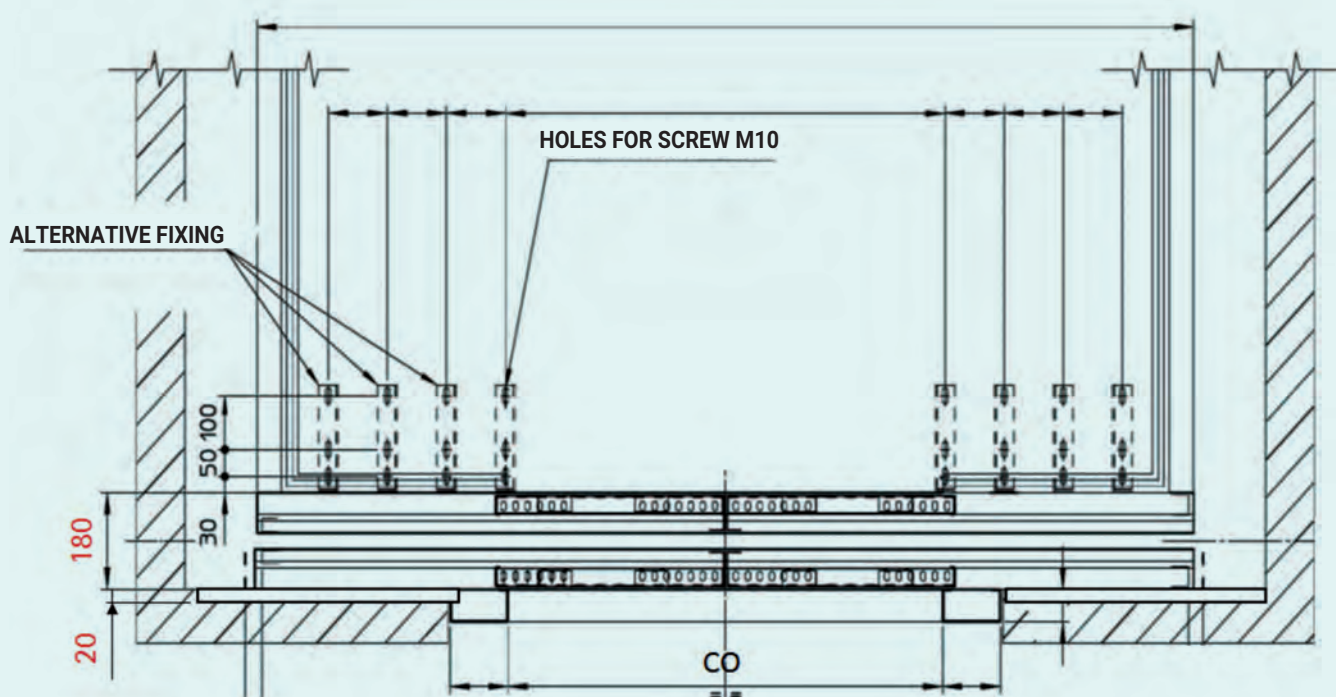


NETTUNO 3203

TYPE 01-02/U

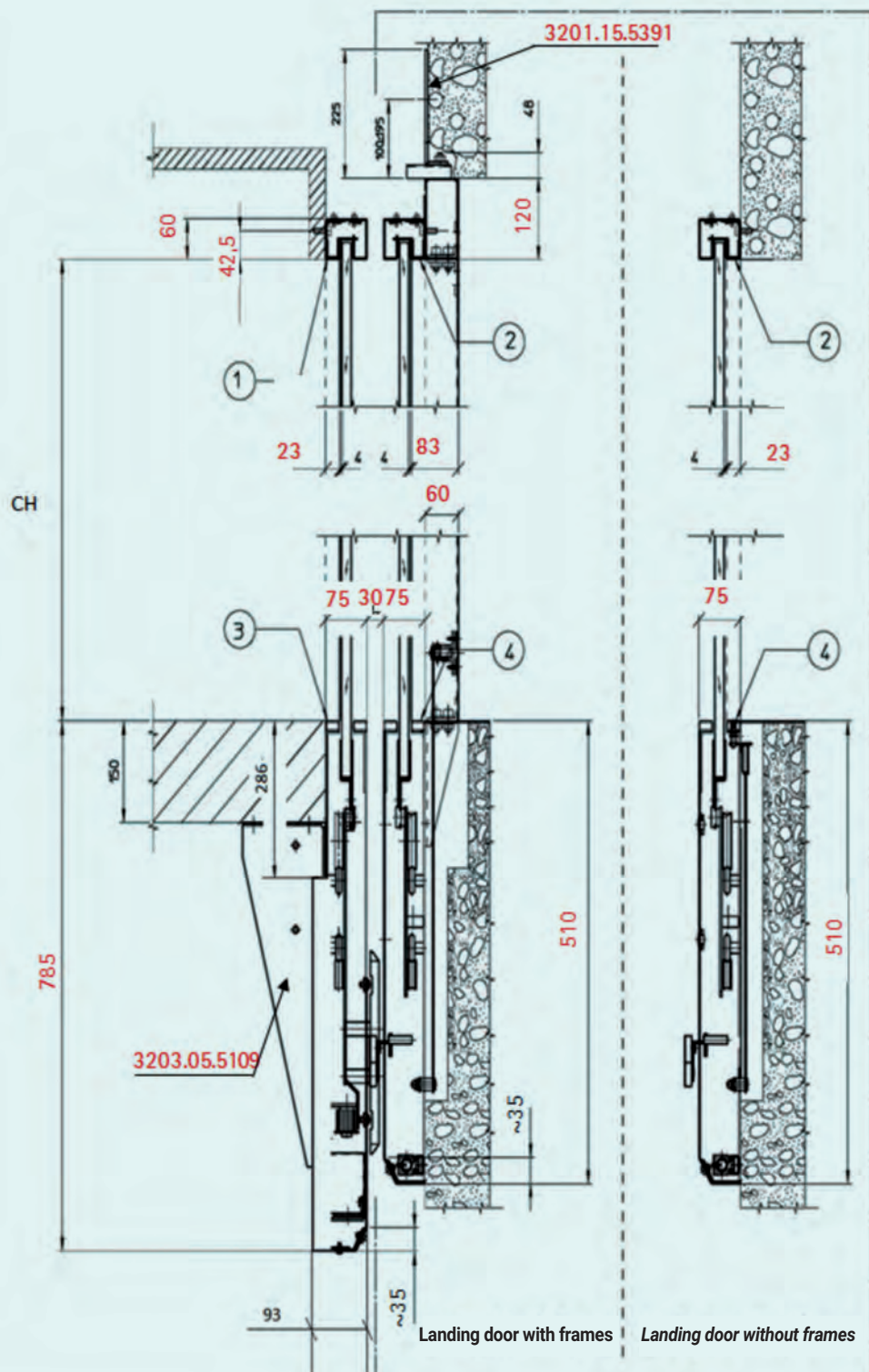
MAX. OVERALL DIMENSIONS OF THE CAR DOOR SUPPORT PLATE

NETTUNO 3203, 01-02/U



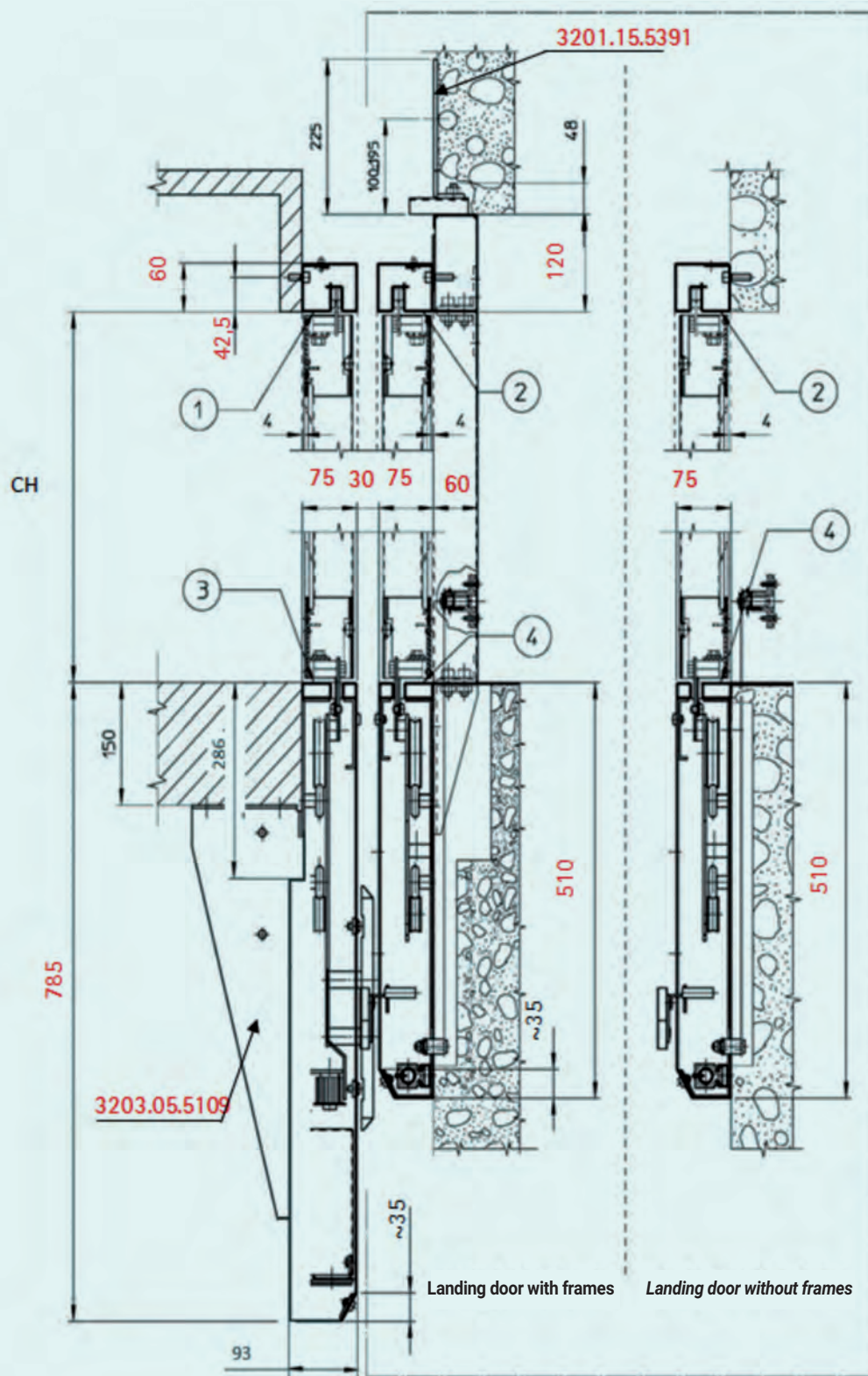
NETTUNO 3203

GLASS PANELS WITH VISIBLE AND HIDDEN TRIMS



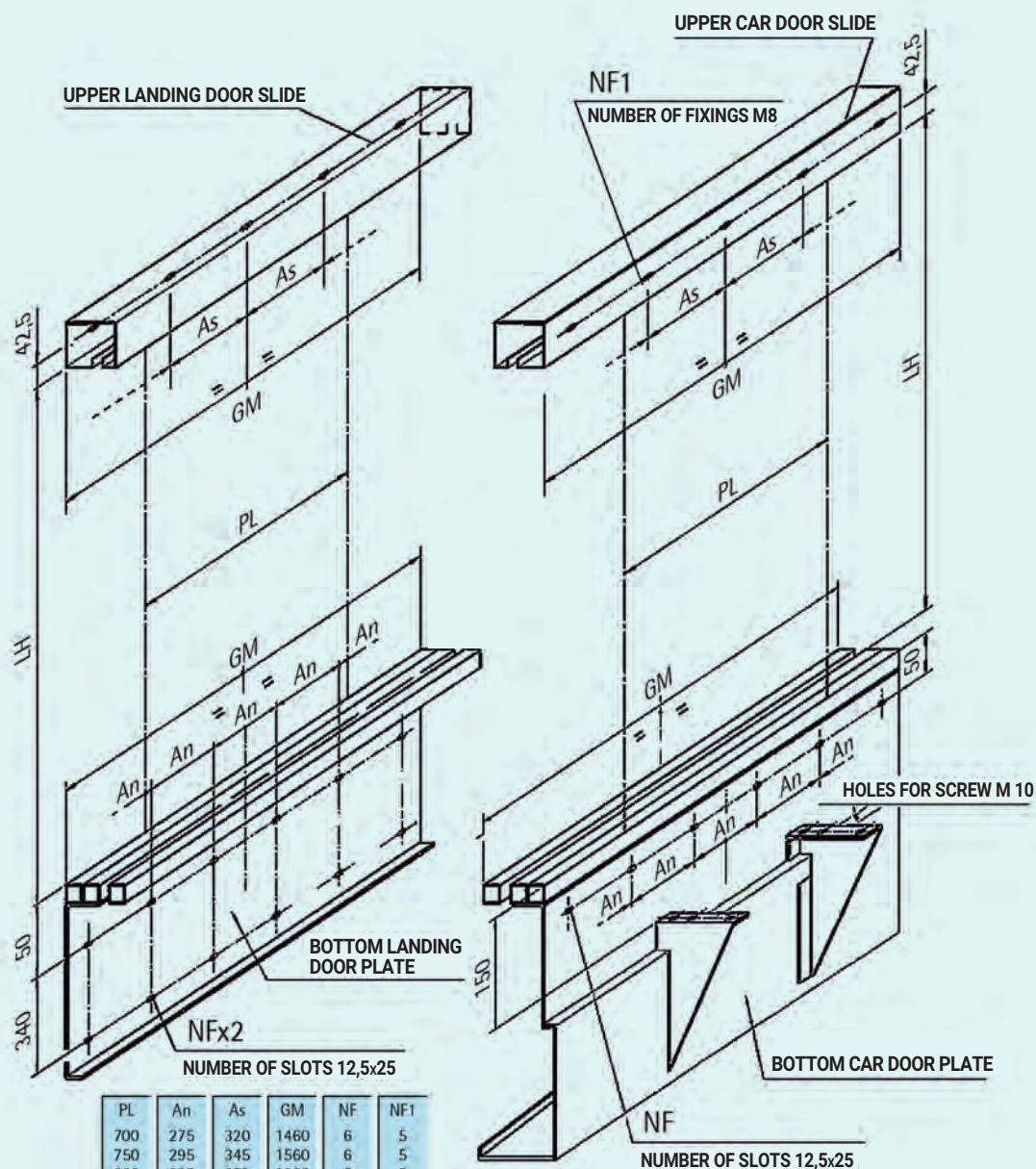
NETTUNO 3203

SHEET METAL PANELS / FRAMED GLASS PANELS



NETTUNO 3203

TWO PANEL CENTRE OPENING DOOR **01-02/U**

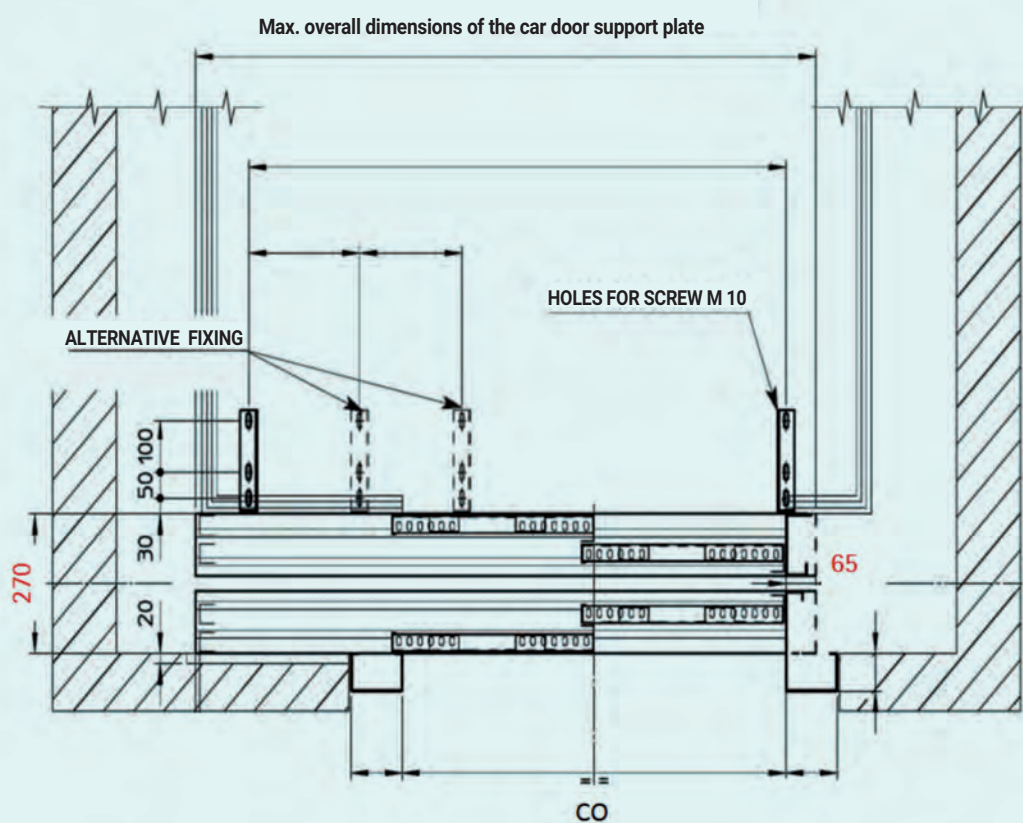
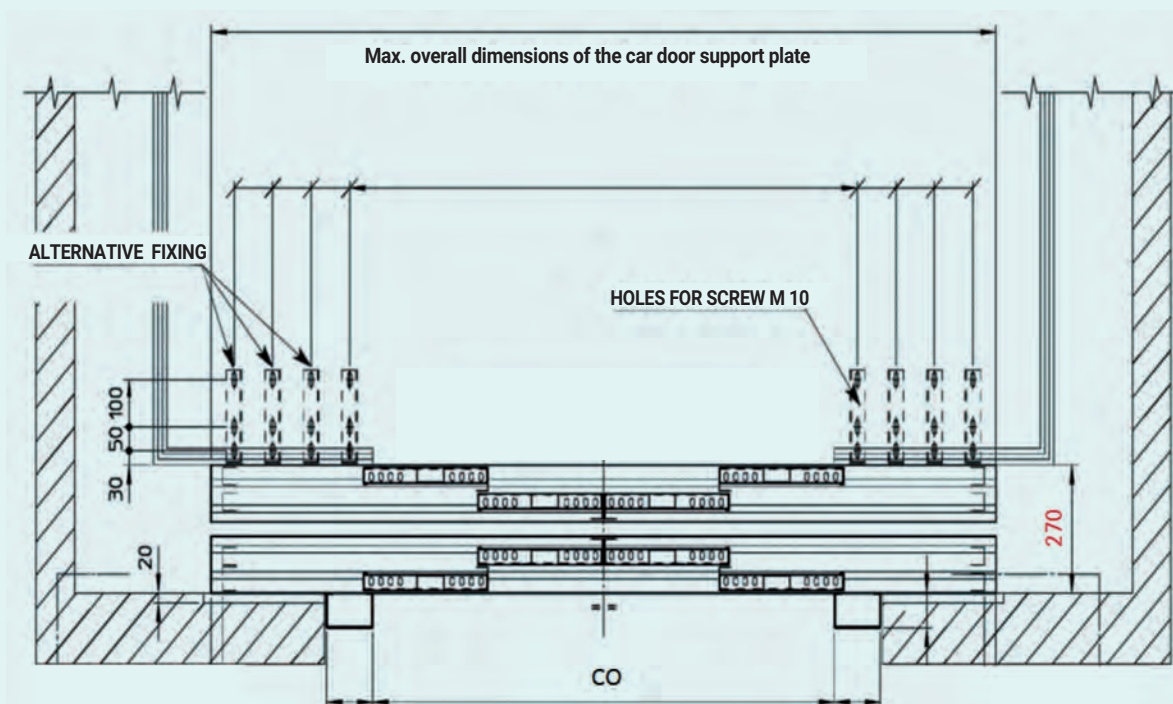


PL	An	As	GM	NF	NF1
700	275	320	1460	6	5
750	295	345	1560	6	5
800	225	370	1660	8	5
850	240	395	1760	8	5
900	255	420	1860	8	5
950	270	445	1960	8	5
1000	280	470	2060	8	5
1050	240	495	2160	10	5
1100	240	260	2260	10	9
1150	250	272,5	2360	10	9
1200	265	285	2460	10	9
1250	275	297,5	2560	10	9
1300	235	310	2660	12	9
1350	240	322,5	2760	12	9
1400	250	335	2860	12	9

NETTUNO 3203

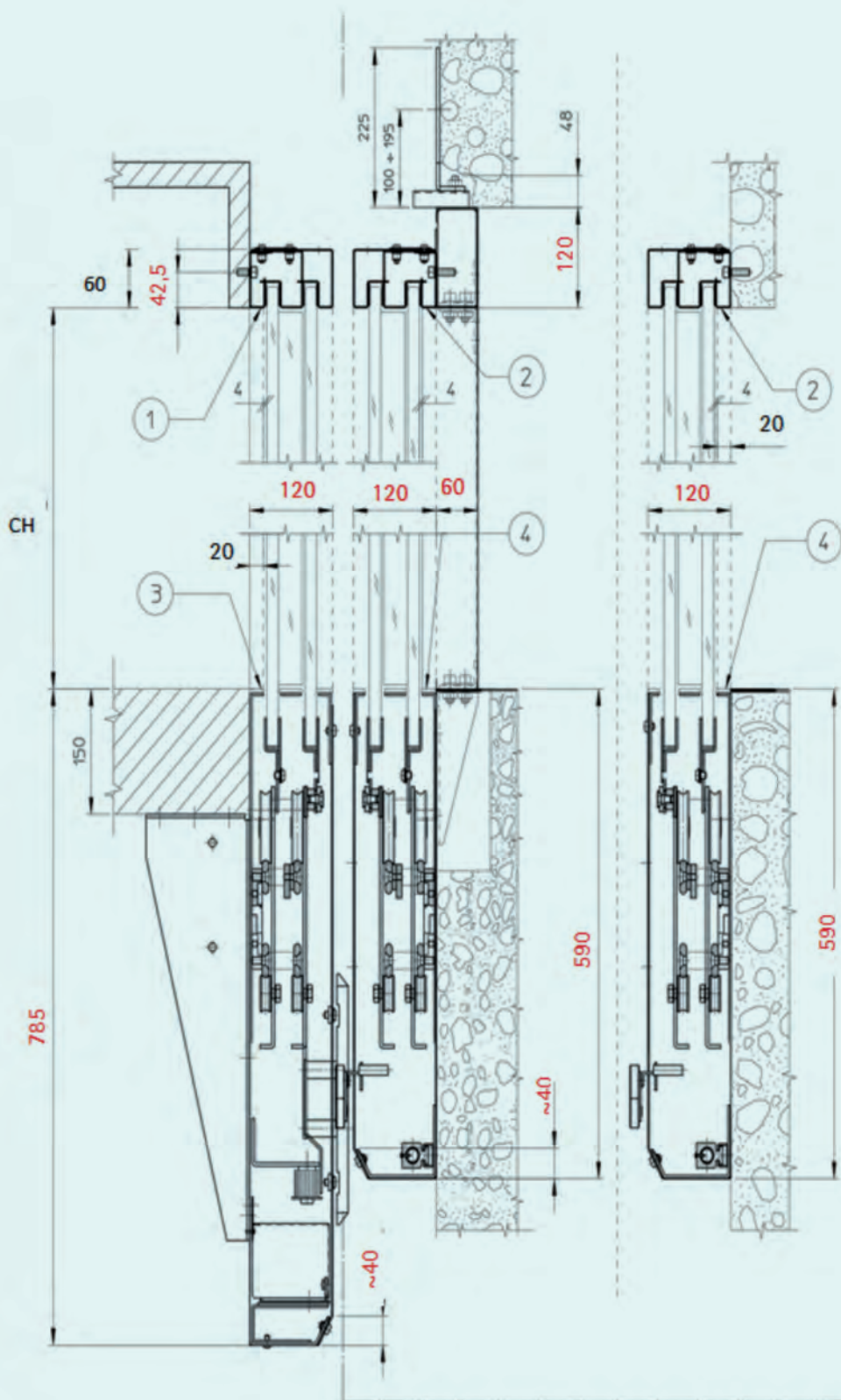
TYPE 41-42/U + 11-12/U

MAX. OVERALL DIMENSIONS OF THE CAR DOOR SUPPORT PLATE



NETTUNO 3203

GLASS PANELS WITH VISIBLE AND HIDDEN TRIMS

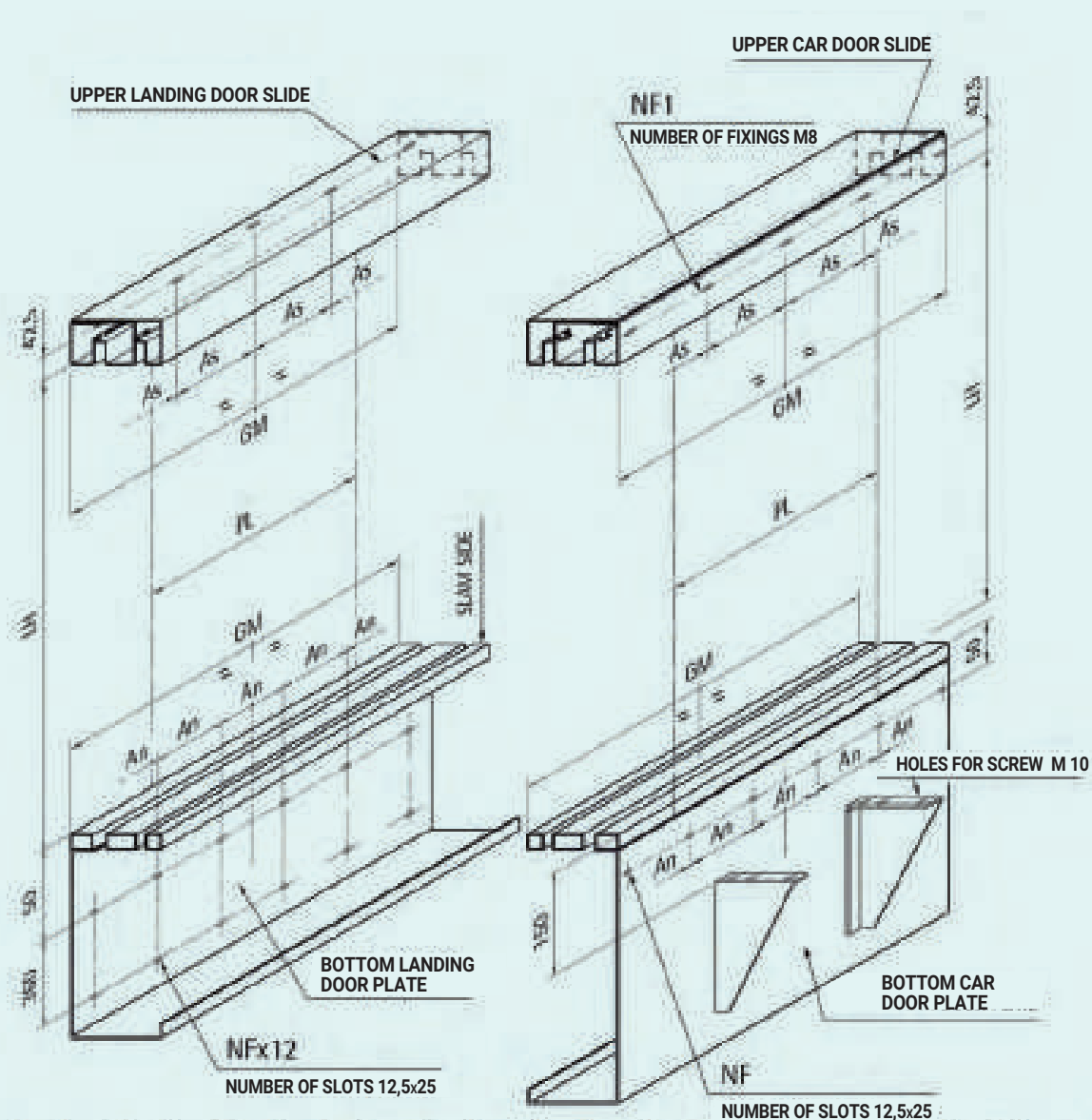


SHEET METAL PANELS / FRAMED GLASS PANELS



NETTUNO 3203

FOUR PANEL CENTRE OPENING DOOR 41-42/U

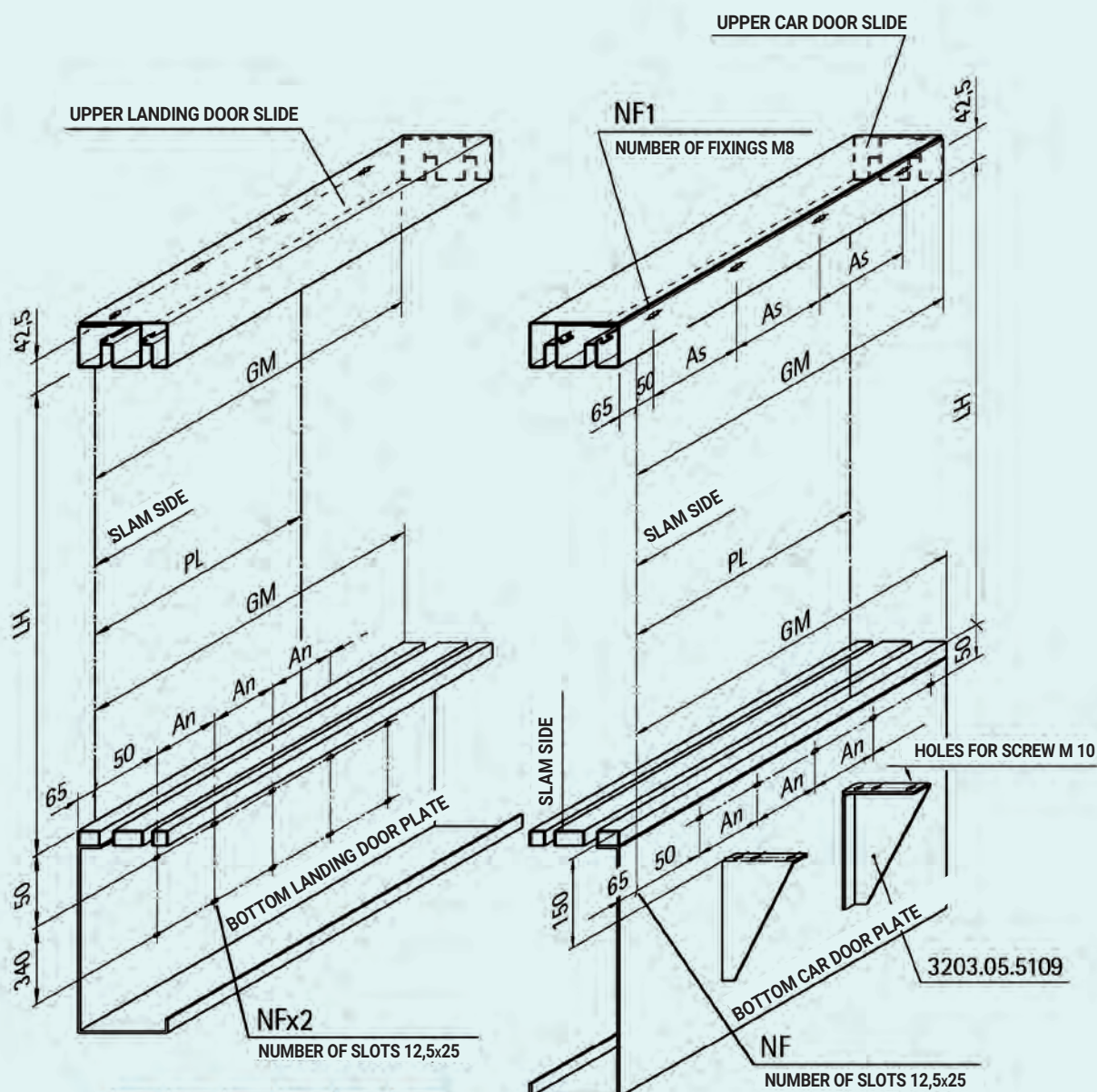


PL	As	An	GM	MT	NF1
750	240	240	1250	5	5
800	240	240	1300	5	5
850	240	240	1350	5	5
900	240	240	1400	5	5
950	240	240	1450	5	5
1000	240	240	1500	5	5
1050	240	240	1550	5	5
1100	240	240	1600	5	5
1150	240	240	1650	5	5
1200	240	240	1700	5	5
1250	240	240	1750	5	5
1300	240	240	1800	5	5
1350	240	240	1850	5	5
1400	240	240	1900	5	5

PL	As	An	GM	MT	NF1
1450	240	240	1950	5	5
1500	240	240	2000	5	5
1550	240	240	2050	5	5
1600	240	240	2100	5	5
1650	240	240	2150	5	5
1700	240	240	2200	5	5
1750	240	240	2250	5	5
1800	240	240	2300	5	5
1850	240	240	2350	5	5
1900	240	240	2400	5	5
1950	240	240	2450	5	5
2000	240	240	2500	5	5

NETTUNO 3203

TWO PANEL SIDE OPENING DOOR 11-12/U



PL	An	As	GM	NF	NF1
700	250	320	1100	5	4
750	270	350	1175	5	4
800	270	370	1250	5	4
850	250	400	1325	6	4
900	250	420	1400	6	4
950	270	450	1475	6	4
1000	270	450	1550	6	4
1050	250	350	1625	7	5
1100	250	400	1700	7	5
1150	270	400	1100	7	5
1200	250	420	1775	8	5
1250	250	450	1925	8	5
1300	270	450	2000	8	5
1350	250	370	2075	9	6
1400	250	400	2150	9	6