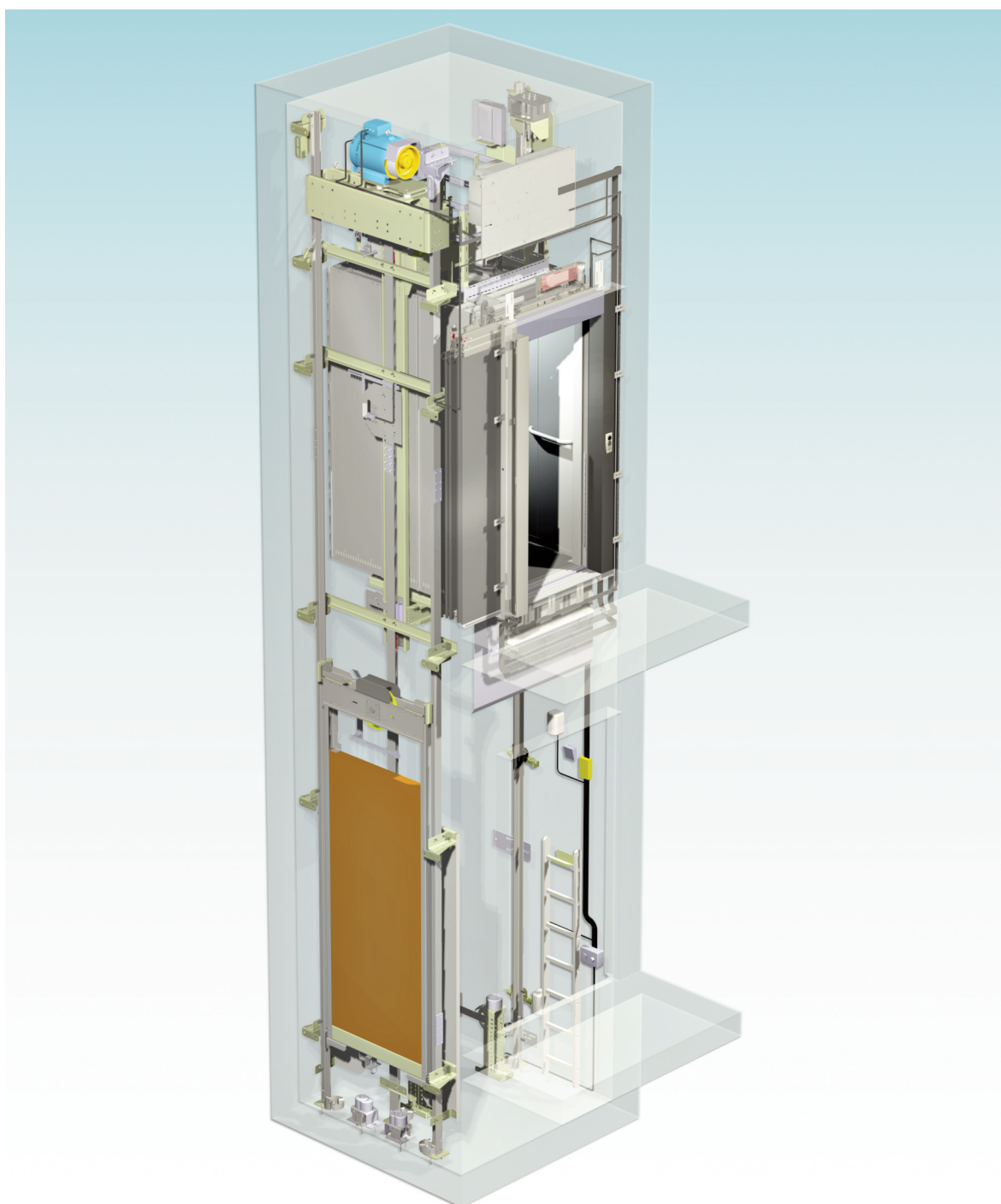


THE WITTUR ANSWER TO THE MACHINE ROOMLESS  
MARKET REQUIREMENTS

# MRL W Line



*safety in motion™*

## ADVANCED FEATURES

# MRL W Line

### THE WITTUR ANSWER TO THE CURRENT MRL MARKET REQUIREMENTS

The MRL W Line, Wittur's new generation of machine roomless electric lift, offers an ideal solution for residential, commercial and public buildings based on an innovative modular design.

The MRL W Line has been designed specifically to permit optimised use of space and energy consumption in buildings with up to 15 stops and a travel height of up to 50 m, with a maximum rated load of 2500 kg and a maximum rated speed of 1,6 m/s.

### NORM COMPLIANT

The MRL W Line fulfills all the requirements of the Lift Directive 95/16/EC, as well as the standards EN81-1A3, EN81-28 and EN81-58.

Wittur additionally offers the option of supplying the MRL W Line to comply with EN81-70 (designed specifically for passengers with reduced mobility) and EN81-73 (behaviour of lifts in the event of fire).

Upon request, the MRL W Line can be manufactured to comply with the standards EN81-71, EN81-72 and EN81-21.

### QUICK INSTALLATION

The MRL W Line is easy and quick to install. A new modular logistics concept has been designed so that each box is opened only as and when its contents are needed, thereby avoiding time wastage and confusion.

Furthermore, each component has its own user-friendly manual, making the steps of the assembly process easy to follow and fail-safe.

The assembly of the electrical components has also been made simpler thanks to Wittur's "Plug and Play" concept. All the customer has to do is connect the components as instructed in the manuals.





## ADVANCED FEATURES

# MRL W Line

### LOW MAINTENANCE

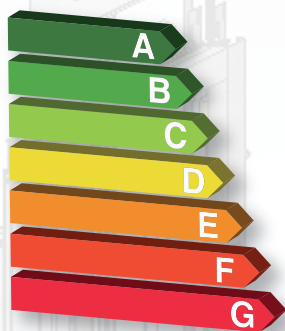


The MRL W Line requires minimal maintenance due to the high quality and simplicity of its design.

Besides reducing maintenance costs, this adds to the safety of the assembly and maintenance personnel.

*Wittur Inside:* the MRL W Line incorporates components manufactured by Wittur to the highest standards of quality, reliability and safety.

### REDUCED ENERGY CONSUMPTION



The MRL W Line offers low energy consumption thanks to its efficient ECO design. It has been awarded the "A" classification according to the norm VDI 4707.

Both the gearless drive motor and car door motor incorporate cutting-edge technology in the form of permanent magnets which guarantee reduced energy consumption during the running of the lift, and whose "Sleep Mode" (upon request) reduces energy consumption to "0" watts when the lift is not being used.

### COMPACT DESIGN WITH REDUCED DIMENSIONS



The MRL W Line makes optimal use of available space and, depending on rated load, rated speed and the height of the car, can be installed in any type of shaft with a pit depth starting at 1050 mm (for 1 m/s) or 1200 mm (for 1,6 m/s), and headroom starting at just 3400 mm (for 1 m/s) or 3600 mm (for 1,6 m/s).

Mounted directly onto the guide rails under Wittur patent, the MRL W Line uses Wittur bed plates and WSG S-series gearless drives, which offer smaller dimensions through the use of reduced rope diameters with smaller traction sheaves (240 mm for rated loads up to 630 kg, and 320 mm for rated loads up to 1050 kg).

Furthermore, the controller is perfectly integrated into the design of the elevator, fitting snugly into a compact controller cabinet placed neatly in front of the frame of the landing door itself.

## ADVANCED FEATURES

# MRL W Line

### A SILENT AND COMFORTABLE RIDE



Through the combination of highly efficient mechanical and electrical components (like the gearless drive), the isolation of vibrating elements, drive control by means of a frequency inverter, balanced rope arrangement and low friction sliding guide shoes, it has been possible to obtain a high ride comfort and low noise levels compliant with VDI 2566-2.

The "Comfort Kit" with its silent blocks made of plated stainless steel wiring (standard supply for 1,6 m/s but optional for 1 m/s) offers a reduction of up to 15% in the level of vibration of the drive, obtaining an enhanced ride comfort and preventing any vibrations from travelling through the building.

The noise level perceived by the passenger from inside the car is limited to 50 dBA.

### OPTIMISED PACKAGING



A new and user-friendly logistics concept has been designed for Wittur's new range of elevator systems.

The elevator's sub-components are delivered in pre-established space-saving and highly recyclable modules, which have been clearly identified and numbered according to the order in which they are needed within the elevator's assembly sequence. This greatly optimises handling and increases safety during transportation.

Each module is easily identifiable and is opened only when its contents are needed, thereby increasing the ease of assembly whilst dramatically reducing the risk of loss of components from boxes that have been opened before it was necessary.

Once the contents of the box have been used, the box can be removed from the site and recycled.

### AVAILABLE FINISHES



The simplicity of the MRL W Line in no way detracts from the versatility of the options and car decorations available.

The standard decorations, with their functional designs, offer the added advantage of a short production lead-time, but the MRL W Line can be supplied in a most versatile range of decorations to suit any request including skinplate, melamine, laminate, wood, stainless steel and glass.

For the full range of available decorations, please contact us.



## PRODUCT RANGE

# MRL W Line

The MRL W Line offers single and double entrances at 180° with various automatic door solutions.

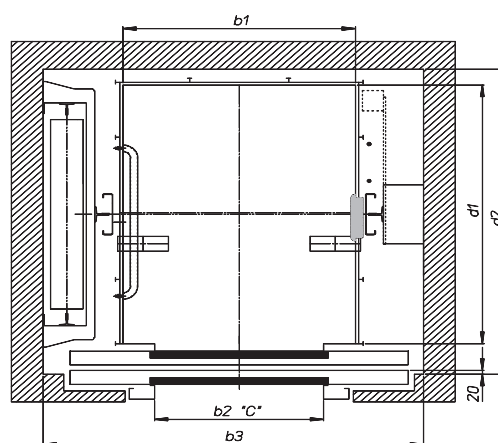
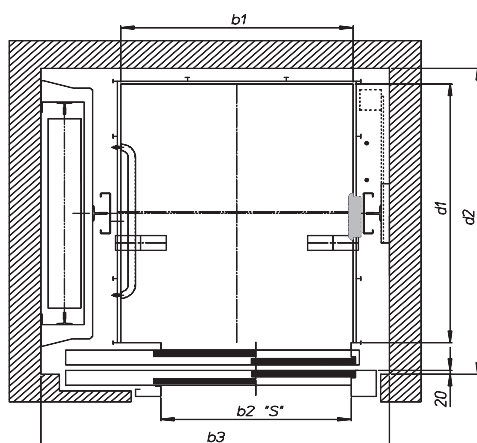
Rated load	Rated speed	N° of entrances	Internal car width	Internal car depth	Clear opening	Door opening	Minimum shaft width	Minimum shaft depth (*)	Minimum headroom	Minimum pit depth
kg	m/s		b1	d1	b2	C / S	b3	d2	h1	d3
			mm	mm	mm		mm	mm	mm	mm
320	1,00 / 1,60	1 - 0°	900	1000	700	S	1450	1450	3400 / 3600	1050 / 1200
450			1000	1200	800	S	1550	1575		
			1000	1250		S	1550	1575		
630			1100	1400	900	S	1650	1650	3600 / 3800	1100 / 1200
800			1350	1400		C	1940	1650		
			1350	1400		S	1940	1650		
			1100	2100		S	1690	2350		
1050			1600	1400		C	2190	1650		
1275			1200	2300	1000	S	1842	2675	3700 / 3900	1200 / 1350
1600			1400	2400	1200	S	2125	2775		
2500			1800	2700	1300	S	2540	3075	3900/4100	

(\*) Door model according to Planning Manual.

Rated load	Rated speed	N° of entrances	Internal car width	Internal car depth	Clear opening	Door opening	Minimum shaft width	Minimum shaft depth (*)	Minimum headroom	Minimum pit depth
kg	m/s		b1	d1	b2	C / S	b3	d2	h1	d3
			mm	mm	mm		mm	mm	mm	mm
320	1,00 / 1,60	2 - 180°	820	1050	700	S	1370	1390	3400 / 3600	1050 / 1200
450			1000	1200	800	S	1550	1540		
630			1100	1400	900	S	1650	1740		
800			1350	1400		C	1940	1740	3600 / 3800	1100 / 1200
			1350	1400		S	1940	1740		
			1100	2100		S	1690	2440		
1050			1600	1400		C	2190	1740		
1275			1200	2300	1000	S	1842	2860	3700 / 3900	1200 / 1350
1600			1400	2400	1200	S	2125	2960		
2500			1800	2700	1300	S	2540	3260	3900/4100	

(\*) Door model according to Planning Manual.

NOTE: The dimensions of the car are available upon request in steps of 50 mm.





## YOUR GLOBAL PARTNER FOR COMPONENTS, MODULES AND SYSTEMS IN THE ELEVATOR INDUSTRY

Albania  
Algeria  
Argentina  
Australia  
Austria  
Azerbaijan  
Belarus  
Belgium  
Brazil  
Bulgaria  
China  
Colombia  
Croatia  
Cuba  
Czech Republic  
Denmark  
Egypt  
Estonia  
Finland  
France  
Georgia  
Germany  
Hong Kong  
Hungary  
Iceland  
India  
Indonesia  
Iran  
Iraq  
Israel  
Italy  
Japan  
Kazakhstan



Latvia  
Lebanon  
Liechtenstein  
Lithuania  
Malaysia  
Mexico  
Moldova  
Morocco  
Netherlands  
Norway  
Poland  
Portugal  
Romania  
Russia  
Saudi Arabia  
Serbia  
Singapore  
Slovakia  
Slovenia  
South Africa  
South Korea  
Spain  
Sweden  
Switzerland  
Taiwan  
Tajikistan  
Turkey  
Turkmenistan  
Ukraine  
United Kingdom  
USA  
Uzbekistan  
Vietnam

*safety* **in** *motion*™

[www.wittur.com](http://www.wittur.com)

More information  
about Wittur Group  
available on-line.

