

# 2000 R

DOORS FOR PANORAMIC ELEVATORS



safety **in** motion™

APPLICATIONS		DESTINATIONS					
		PASSENGERS		GOODS		SPECIAL USES	
		DOORS	CARS	DOORS	CARS	DOORS	CARS
HOMELIFT			ADAPTA VARIO				
RESIDENTIAL			ADAPTA		CARGO		CUSTOM
OFFICES			ADAPTA		CARGO	2000 R	CUSTOM PANOR./ CUSTOM
HIGH RISE			VARIO		CARGO		CARGO
HOSPITALS			VARIO		ADAPTA		ADAPTA
TRANSPORT			ADAPTA		CARGO		CUSTOM
MODERNIZATION			EASY ADAPTA		CARGO		CARGO
HOTELS			VARIO		ADAPTA	2000 R	PANORAMIC CUSTOM
SHOPPING CENTERS			ADAPTA		ADAPTA	2000 R	CARGO PANOR./ CUSTOM
INDUSTRIAL					CARGO		CUSTOM CARGO



## Delivering innovative design solutions for one-of-a-kind, challenging architectural projects

Have you ever thought how far design might go? Round lifts are the answer. Round doors represent the top line in aesthetic and technological level, both on the design and production viewpoints.

Typically installed in panoramic lifts, round doors have to show all those top-level features that are needed in top-level aesthetic designs. Panoramic lifts are the main examples in which underdriven operators are almost a must, reducing

the visible size of the cabin and hiding mechanisms under the floor level. Last but not least, panoramic lifts are often installed in high-traffic environments, that means high flows of people.

All of these requirements result in a high-performance and good looking product, Sematic 2000 R, that can give a plus to your elevator, making it not only a service element but also an architectural one.

## PRODUCT RANGE

Model	TB min-max (mm)	TH min-max (mm)
K-S 2Z	800 - 1200	2000 - 2200

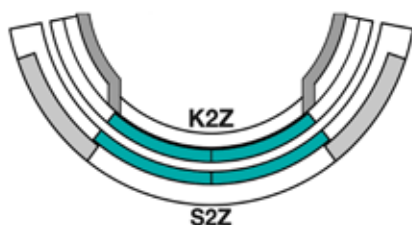
## BOTTOM TRACK PACK OVERALL DIMENSION (mm)

Opening	K (car)	S (landing)	Pack <sup>(1)</sup>
2Z	45	105	180

**Note: Minimum cabin internal diameter 930mm**  
For further information see our technical catalogues

<sup>(1)</sup> 30mm bottom track distance

## DOOR OPENING TYPE



## FIRE RATED EXECUTIONS - EN 81-58

Model	Steel doors	Framed glass doors
S 2Z	E 120 EW 60	-

Many other certifications available. Call for information.

## CABIN SUGGESTED FOR THIS DOOR

> PANORAMIC

## STANDARD MOTORIZATION

Car door rack operator with 42 Vdc Brushless Motor controlled by an electronic card with microprocessor SDS© - DC-PWM technology with integrated switching transformer

- Power supply voltage: 90-290 Vac (115 V -20%, 230 V + 26%), 50-60 Hz with integrated switching
- Power rated 750 VA
- Emergency power supply 24Vdc
- Operating temperature range -10°C to +60°C
- Operating humidity range: up to 80% non condensing
- On-board obstacle detection (door re-opening) feature
- Separately adjustable opening and closing speed
- Integrated self-learning cycle and automated speed profiles setting

DOOR AND FRAME FINISHES	STANDARD	OPTIONS
RAL 7032	✓	✗
Other RAL Colours	✗	✓
Framed glass panels and side posts	✗	✓
Stainless steel claddings	✗	✓
Skin plate claddings	✗	✓

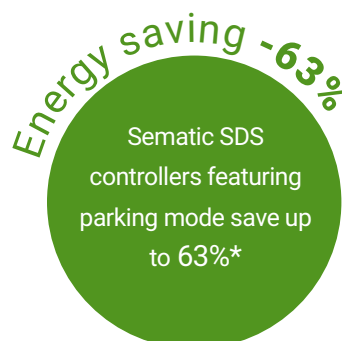
  

BOTTOM TRACK	STANDARD	OPTIONS
Galvanized steel	✓	✗
Stainless steel	✗	AISI 304 / AISI 316

## SEMATIC FOR ENERGY SAVING

At Sematic, we take our energy use seriously. We have developed a set of technological devices that allow our elevator components to use as little energy as possible, such as our **Sematic SDS door controller**.

\* Door power consumption difference between normal standby mode and parking mode measured in laboratory



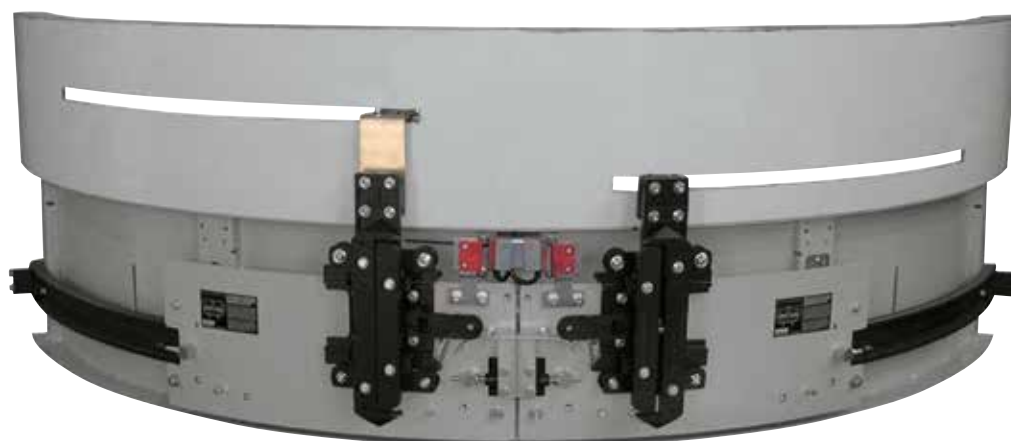
EN81



MAIN FEATURES	STANDARD	OPTIONS
Certified locking device	✓ EN81-1/2 ✓ EN81-20/50	✗
Position of the lock release	Integrated into the header	In the side post
Door closing	Counterweight	✗
Door panels	Single skin	Double skin
Header height	280 mm	✗
Frame	400x60 mm door posts	Reduced door posts (min.100x45 mm) Increase door posts (> 400 mm)
Installation	In the shaft	In niche
Kit man in the pit	In case of EN81-20/50	In case of EN81-1/2
Monostable contact	✗	✓
Impact robust packaging	Cardboard box Wood (ISPM15)	✗

SPECIAL EXECUTION	OPTIONS
Portal execution	✓
Smoke-seal/Air-seal execution	✓
Anti-vandal execution	EN81-71
Underdriven operator	✓



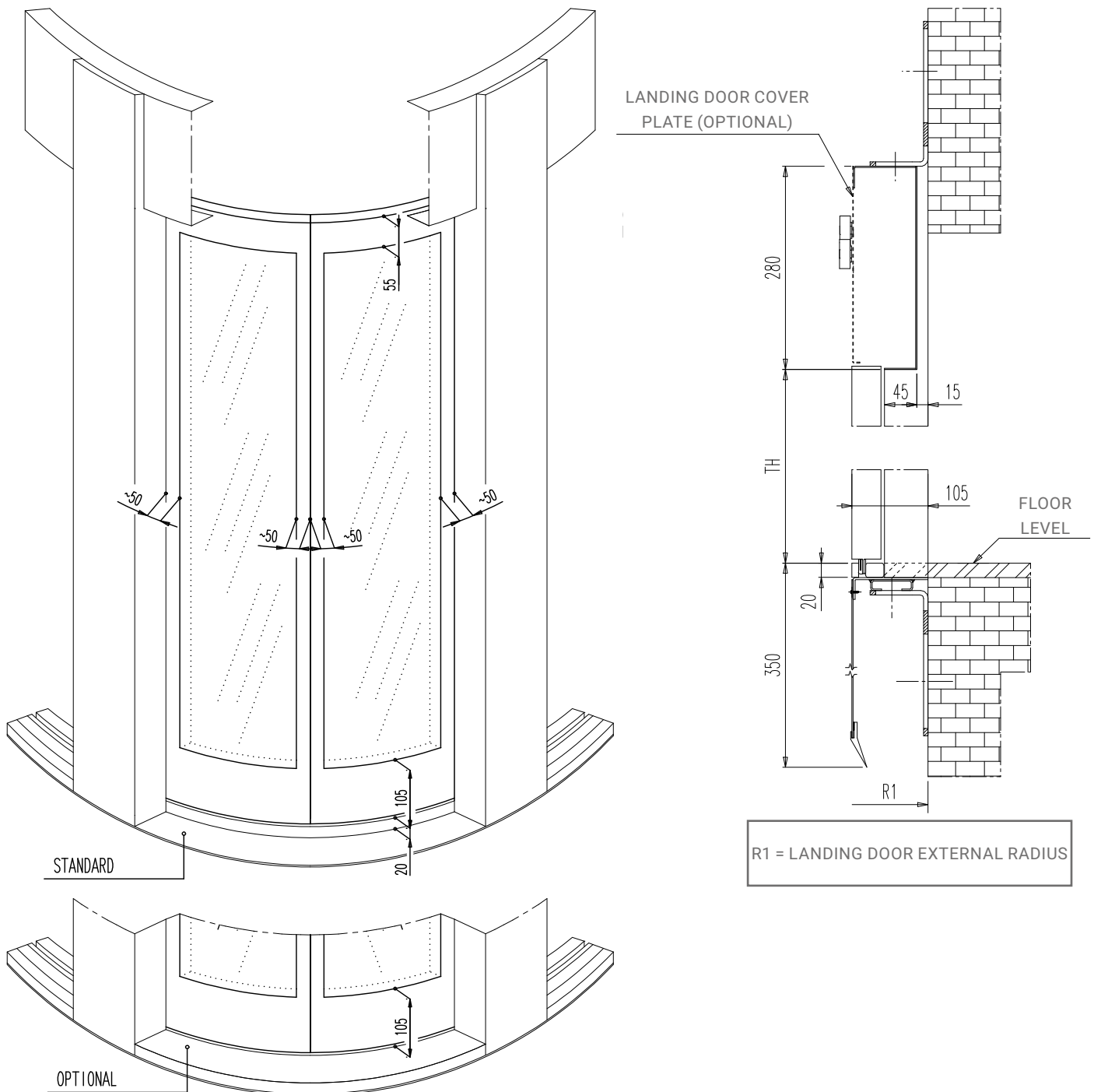


EN81

MAIN FEATURES	STANDARD	OPTIONS
Car door locking device	EN81-20/50	EN81-1/2
Skate	Aluminium	Fixed arm
Motorization	See pag. 5	x
Door controller	SDS Brushless	x
Door panels	Single skin	Double skin
Detecting system	x	Static
Operator height	450 mm	x
Average car door cycles per year	500.000	x
Impact robust packaging	Cardboard box Wood (ISPM15)	x

SPECIAL EXECUTION	OPTIONS
Anti-vandal execution	EN81-71
Underdriven operator	✓

## 2Z LAYOUT: FRONT AND SIDE VIEWS



## NOTES

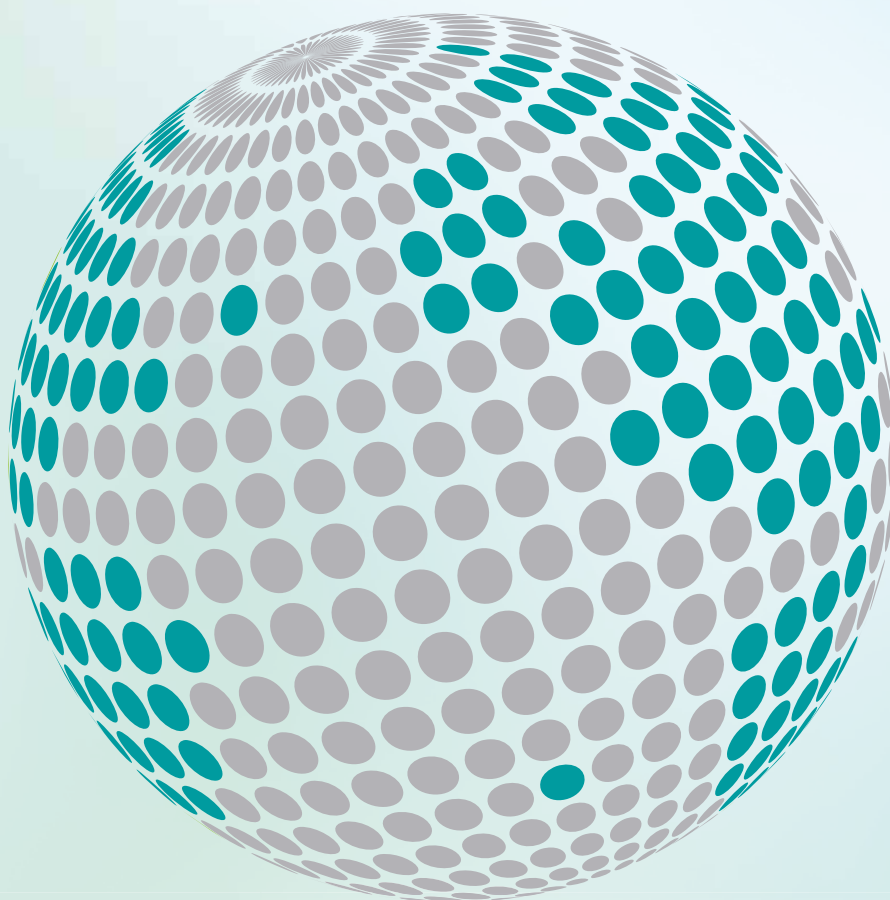
- For further information see our technical catalogues







**YOUR GLOBAL PARTNER FOR COMPONENTS,  
MODULES AND SYSTEMS IN THE ELEVATOR INDUSTRY**



*safety* **in** *motion*™

[www.wittur.com](http://www.wittur.com)

More information  
about Wittur Group  
available on-line.



**SELCON®**  
a WITTUR brand

**Liftmaterial**  
a WITTUR brand

**sematic®**  
a WITTUR brand