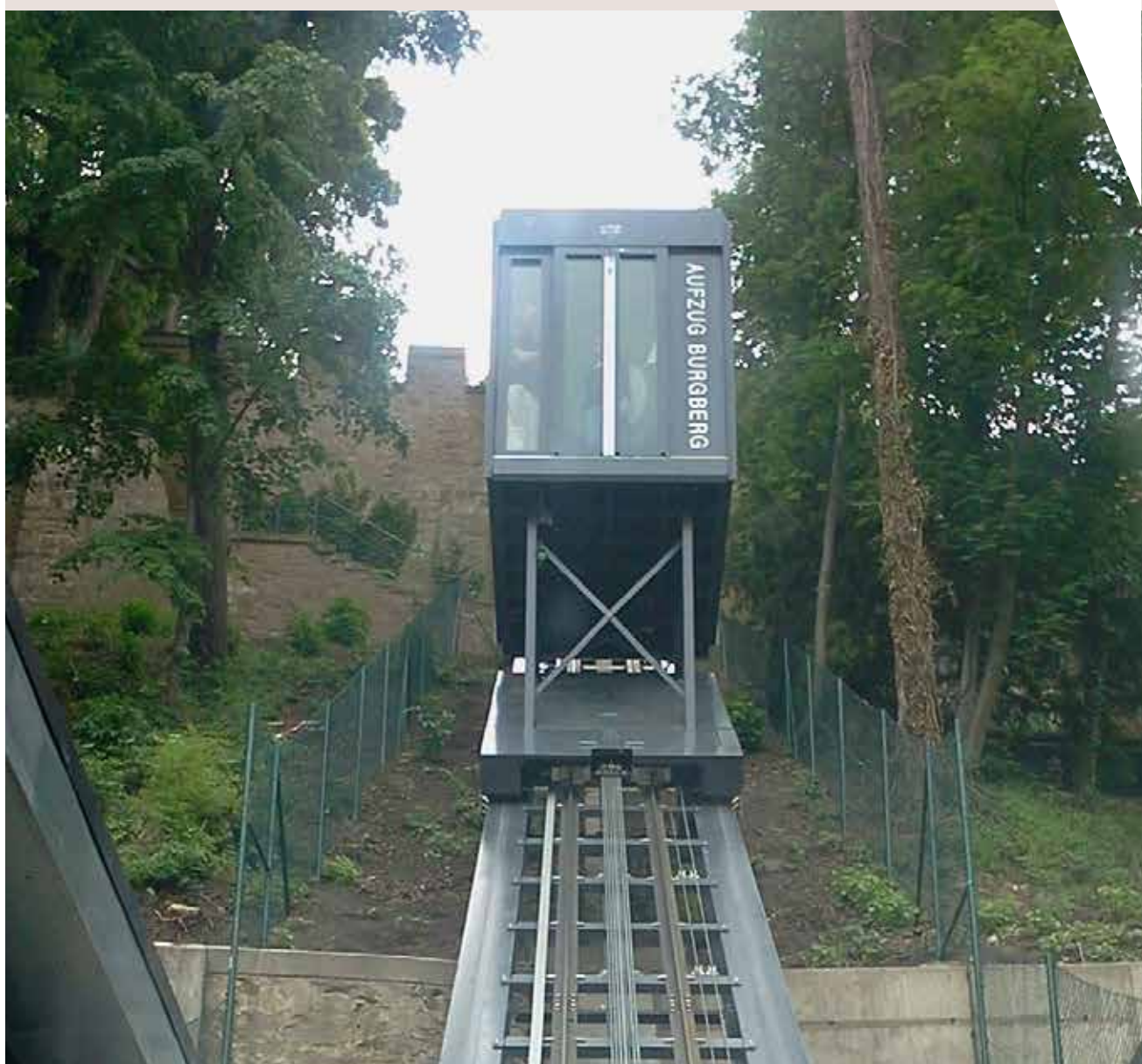
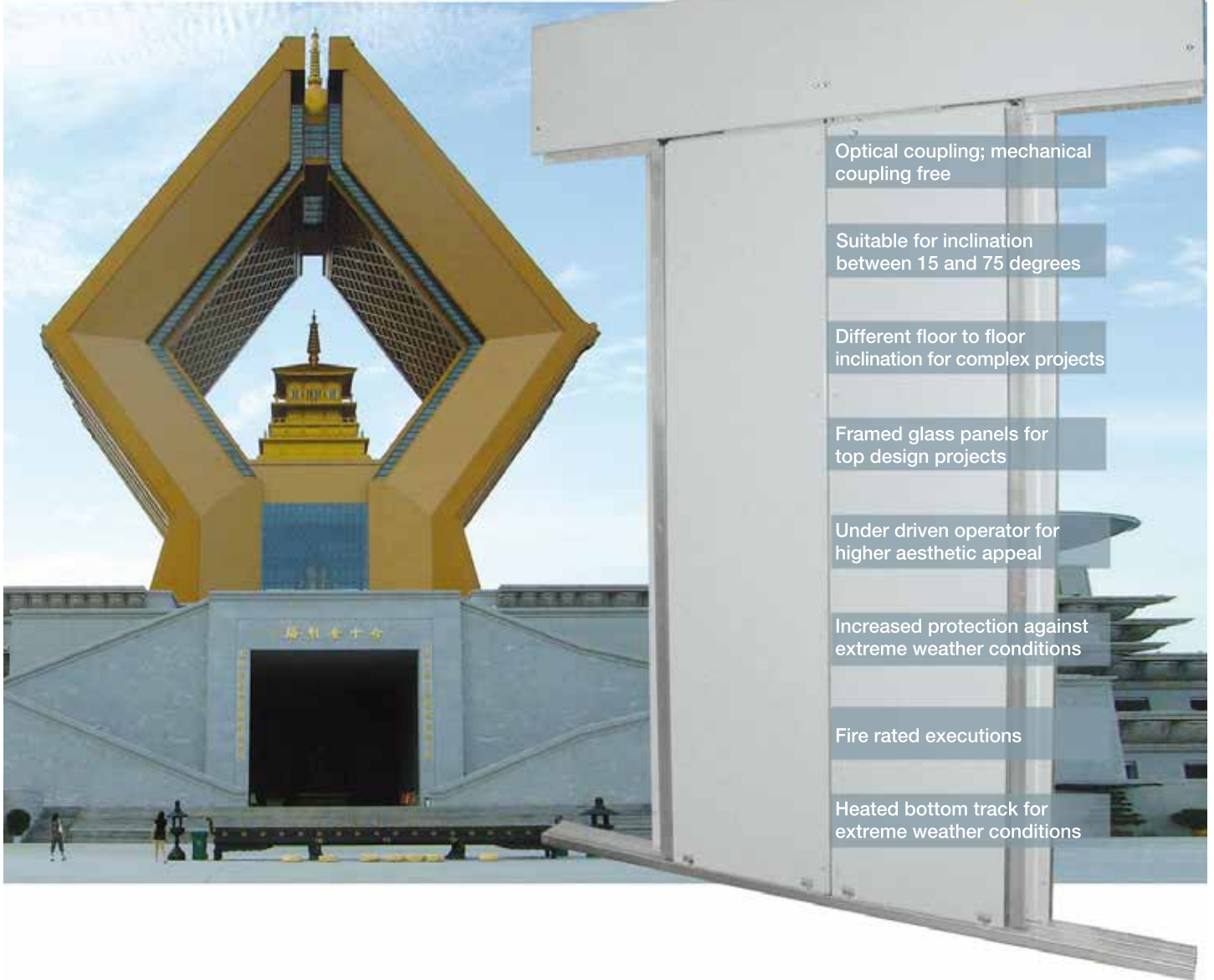


# 2000 SWS

DOORS FOR INCLINED ELEVATORS



APPLICATIONS		DESTINATIONS					
		PASSENGERS		GOODS		SPECIAL USES	
		DOORS	CARS	DOORS	CARS	DOORS	CARS
HOMELIFT			ADAPTA VARIO				
RESIDENTIAL			ADAPTA		CARGO	2000 SWS	CUSTOM
OFFICES			ADAPTA		CARGO	2000 SWS	CUSTOM PANOR./ CUSTOM
HIGH RISE			VARIO		CARGO		CARGO
HOSPITALS			VARIO		ADAPTA		ADAPTA
TRANSPORT			ADAPTA		CARGO	2000 SWS	CUSTOM
MODERNIZATION			EASY ADAPTA		CARGO		CARGO
HOTELS			VARIO		ADAPTA		PANORAMIC CUSTOM
SHOPPING CENTERS			ADAPTA		ADAPTA		CARGO PANOR./ CUSTOM
INDUSTRIAL					CARGO		CUSTOM CARGO



Optical coupling; mechanical coupling free

Suitable for inclination between 15 and 75 degrees

Different floor to floor inclination for complex projects

Framed glass panels for top design projects

Under driven operator for higher aesthetic appeal

Increased protection against extreme weather conditions

Fire rated executions

Heated bottom track for extreme weather conditions

## The first ever certified automatic door with optical coupling

These door systems, based on optical coupling, are the right solution for all those situations in which mechanical coupling is not possible.

Both the car and the landing door feature linear belt traction operators, each with its own engine. They couple through an optical device, integrated into the engine SWS controller, allowing a misalignment up to 50 mm between the centers of the emitter and the detector. Being prEN 81-22 certified,

SWS is ideal for inclined lifts; inclinations between 15° and 75° are allowed and, for complex installations, it's even possible to have different inclinations from floor to floor.

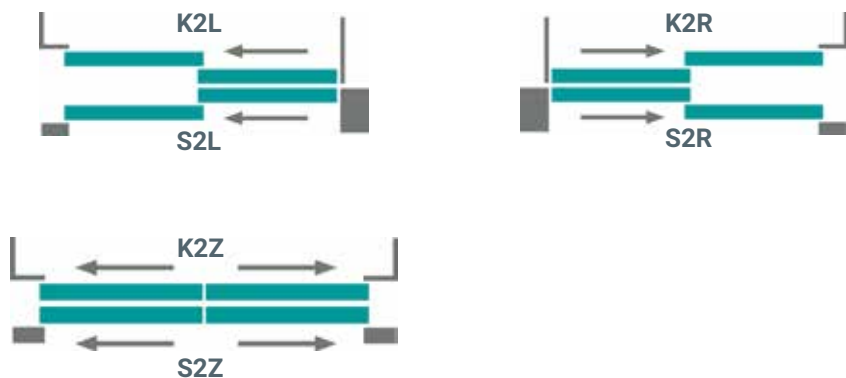
A fully covered operator guarantees high IP ratings and protection degrees even in extreme weather conditions. A wide range of finishes, fire certifications and special solutions are available.

## PRODUCT RANGE

Model	TB min-max (mm)	TH min-max (mm)
K-S 2R/L	800 - 1200	2000 - 2200
K-S 2Z	800 - 1200	2000 - 2200

For further information see our technical catalogues

## DOOR OPENING TYPE



## FIRE RATED EXECUTIONS - EN 81-58

Model	Steel doors	Framed glass doors
S 2R/L	E 120 EW 60	E 120
S 2Z	EI 60 EI 120	

BS 476, GOST and many other certifications available. Call for information.

## CABIN SUGGESTED FOR THIS DOOR

> CUSTOM

## STANDARD MOTORIZATION

Belt-driven operator with 24 Vdc optical encoder controller motor, SWS© DC-PWM technology with integrated switching transformer

- Power supply voltage: 90-290 Vac (115 V -20%, 230 V + 26%), 50-60 Hz with integrated switching.
- Power rated 200 VA.
- Emergency power supply 24Vdc
- Operating temperature range -10°C to +60°C
- Operating humidity range: up to 80% non condensing
- On-board obstacle detection (door re-opening) feature
- Separately adjustable opening and closing speed
- Integrated self-learning cycle and automated speed profiles setting

## DOOR AND FRAME FINISHES

## STANDARD

## OPTIONS

RAL 7032 powder coating	✓	✗
Other RAL Colours	✗	✓
Framed glass panels	✗	✓
Stainless steel claddings	✗	✓
Skin plate claddings	✗	✓

## BOTTOM TRACK

## STANDARD

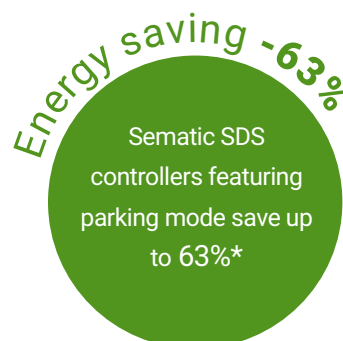
## OPTIONS

Aluminum	✓	✗
Steel	✗	✓
Stainless steel	✗	AISI 304 / AISI 316
Brass, Bronze	✗	✓

## SEMATIC FOR ENERGY SAVING

At Sematic, we take our energy use seriously.  
We have developed a set of technological devices that allow our elevator components to use as little energy as possible, such as our **Sematic SDS door controller**.

\* Door power consumption difference between normal standby mode and parking mode measured in laboratory



EN81

MAIN FEATURES	STANDARD	OPTIONS
Certified locking device	EN81-1/2	<b>x</b>
Position of the lock release	Integrated into the header or in the panel	<b>x</b>
Door closing	Spirator / Counterweight	<b>x</b>
Door panels	Front / rear cladding	<b>x</b>
Header height	400 mm	<b>x</b>
Frame	135x45mm door posts	Reduced door posts (min.80x45 mm) Increase door posts (> 135 mm)
Installation	In the shaft	In niche
Kit man in the pit	<b>x</b>	In case of EN81-1/2
Monostable contact	<b>x</b>	EN81-1/2
Impact robust packaging	Cardboard box Wood (ISPM15)	<b>x</b>
Average car door cycles per year	500.000	<b>x</b>
Coupling type	Optical (mechanical coupling free)	<b>x</b>

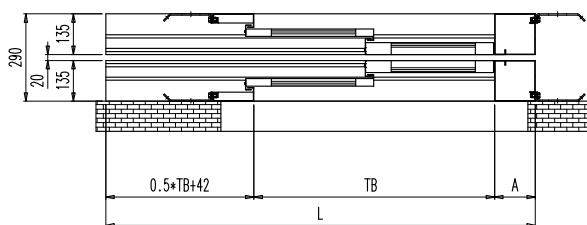
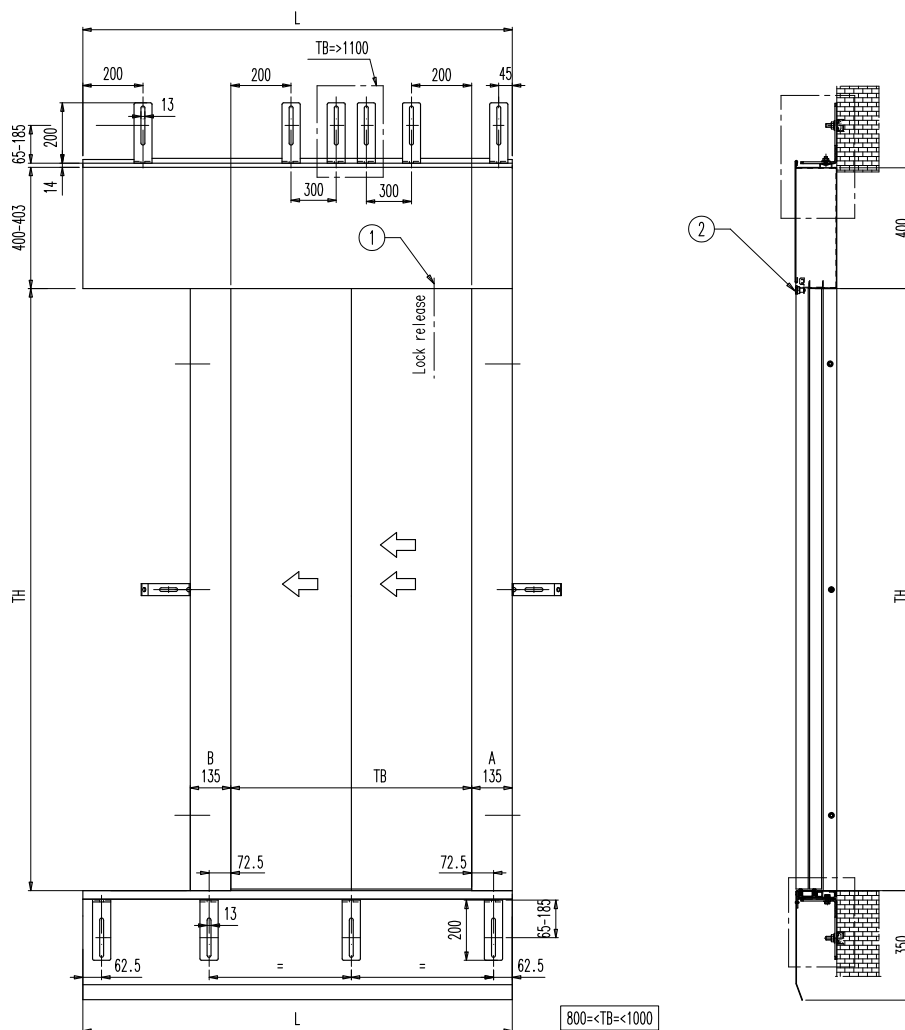
SPECIAL EXECUTION	OPTIONS
Smoke-seal/Air-seal execution	✓
Anti-vandal execution	EN81-71
Hidden bottom track	✓
Underdriven operator	✓
Heated bottom track	✓

2Z execution shown  
in the picture





## 2L LAYOUT: FRONT, SIDE VIEWS AND COUPLING



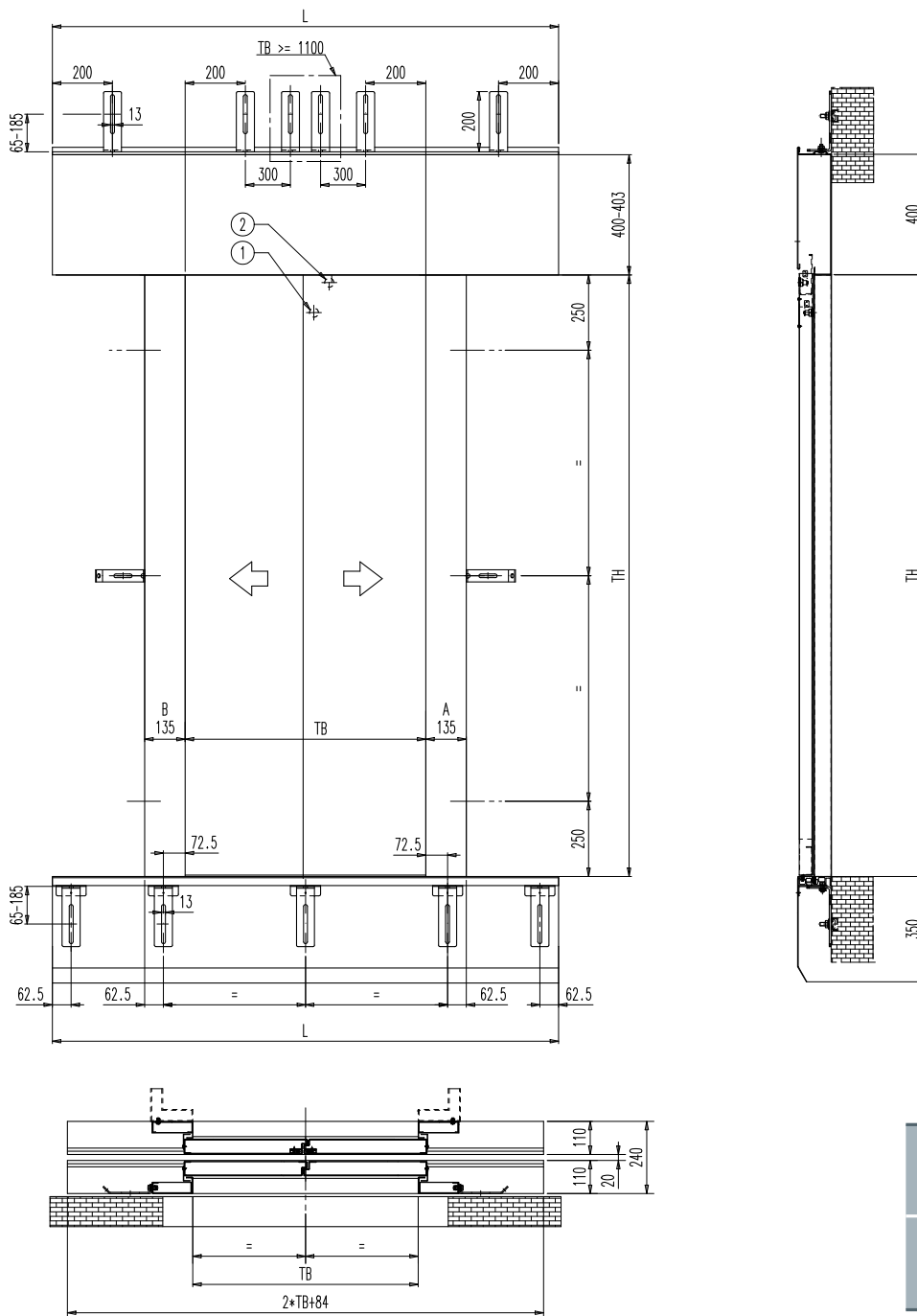
1	LOCK RELEASE (ACCESSIBLE FROM FLOOR)
2	LOCK RELEASE (ACCESSIBLE FROM SHAFT)

## NOTES

- 2L as drawing, 2R mirrored
- For further information see our technical catalogues



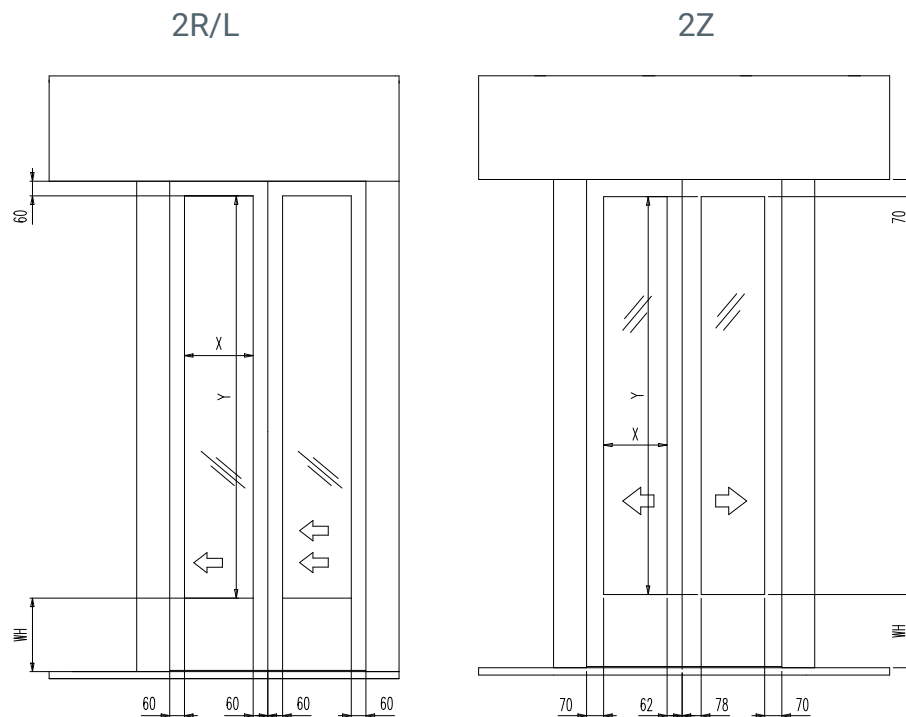
## 2Z LAYOUT: FRONT, SIDE VIEWS AND COUPLING



## NOTES

- For further information see our technical catalogues

## STANDARD DIMENSIONS FOR FRAMED GLASS PANELS



WH

105mm STANDARD (NOT available with hidden bottom track)  
 145mm STANDARD (ONLY for hidden bottom track)  
 CUSTOM

## NOTES

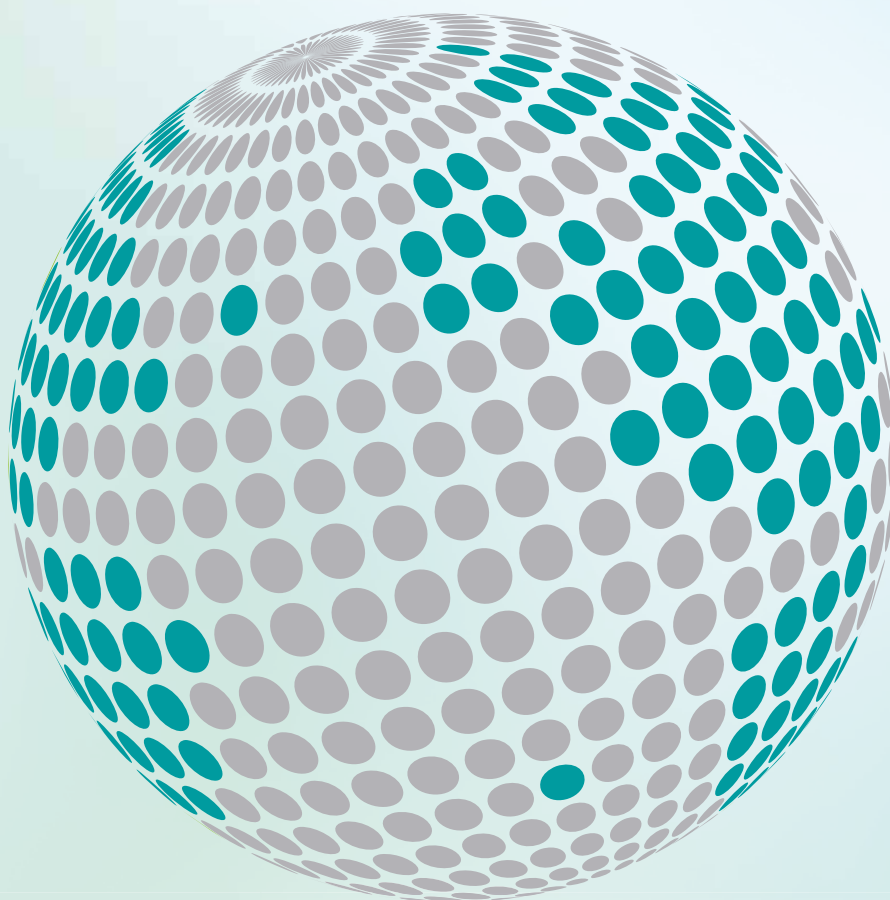
- EN 81-58 and BS476 glass panels available too.
- For further information see our technical catalogues







**YOUR GLOBAL PARTNER FOR COMPONENTS,  
MODULES AND SYSTEMS IN THE ELEVATOR INDUSTRY**



*safety* **in** *motion*™

[www.wittur.com](http://www.wittur.com)

More information  
about Wittur Group  
available on-line.



**SELCON®**  
a WITTUR brand

**Liftmaterial**  
a WITTUR brand

**sematic®**  
a WITTUR brand