

2000 B-CUBIC

DOORS FOR RESIDENTIAL AND OFFICE BUILDINGS



safety *in motion*TM

APPLICATIONS		DESTINATION					
		PASSENGERS		GOODS		SPECIAL USES	
		DOORS	CARS	DOORS	CARS	DOORS	CARS
HOMELIFT			ADAPTA VARIO				
RESIDENTIAL		2000 B-CUBIC	ADAPTA		CARGO		CUSTOM
OFFICES		2000 B-CUBIC	ADAPTA		CARGO		CUSTOM PANOR./ CUSTOM
HIGH RISE			VARIO		CARGO		CARGO
HOSPITALS			VARIO		ADAPTA		ADAPTA
TRANSPORT			ADAPTA		CARGO		CUSTOM
MODERNIZATION			EASY ADAPTA		CARGO		CARGO
HOTELS			VARIO		ADAPTA		PANORAMIC CUSTOM
SHOPPING CENTERS			ADAPTA		ADAPTA		CARGO PANOR./ CUSTOM
INDUSTRIAL					CARGO		CUSTOM CARGO



A safe, reliable and cost effective solution, easy to install and maintain

Ideal for residential and office buildings, Sematic 2000 B-CUBIC is designed, produced and tested to satisfy international technical and qualitative standards, with special care to safety, reliability and cost efficiency. Sematic 2000 B-CUBIC includes a series of smart solutions developed in order to guarantee maximum easiness of installation and low maintenance: such as, for example, the new landing door lock design for quicker adjustment as well

as door posts that are installed above the floor level and do not require installation in niche.

Sematic 2000 B-CUBIC features self-supporting panels available in a wide range of different materials and finishes, galvanized steel header, belt-driven expansion skate, aluminum sill and closing system with springs.

All of the components are guaranteed by Sematic brand, symbol of quality and reliability for over 50 years.

PRODUCT RANGE

Modello	TB min-max (mm)	TH min-max (mm)
K-S 2R/L	700	2000 - 2100
	800 - 1200	2000 - 2200
K-S 2Z	700	2000 - 2100
	800 - 1200	2000 - 2200

For further information see our technical catalogues

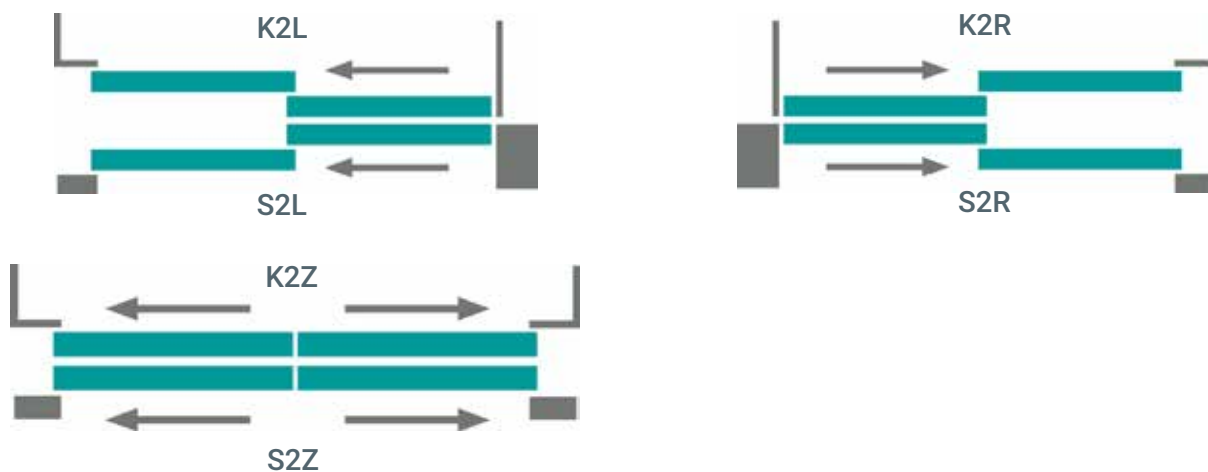
BOTTOM TRACK PACK OVERALL DIMENSION (mm)

Opening	K (car)	S (landing)	Pack ⁽¹⁾
2R/L	85	120	230
2Z	45	90 ⁽²⁾	160

⁽¹⁾ with 25 mm sill to sill distance

⁽²⁾ Slim sill available too

DOOR OPENING TYPE



FIRE RATED EXECUTIONS - EN 81-58

Model	Steel doors
S 2R/L	EN 81-58 E 120
S 2Z	

BS 476 available. Call for information.

CABINS SUGGESTED FOR THIS DOOR

> ADAPTA

STANDARD MOTORIZATION

Belt-driven operator with 24 Vdc optical encoder controller motor, SZS® DC-PWM technology with transformer

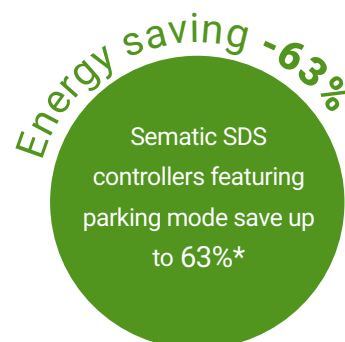
- Power supply voltage: 90-290 Vac, 50-60 Hz
- Power rated: 40 Watt (50 VA)
- Operating temperature range: -10°C to +60°C
- Operating humidity range: up to 80%
- On-board obstacle detection (door re-opening) feature
- Separately adjustable opening and closing speed
- Integrated self-learning cycle and automated speed profiles setting

DOOR AND FRAME FINISHES	STANDARD	OPTIONS
RAL 7032 powder coating	✓	✗
Other RAL Colours	✗	✓
Framed glass	✗	✓
Solid construction stainless steel	✗	✓
BOTTOM TRACK	STANDARD	OPTIONS
Aluminum	✓	✗

SEMATIC FOR ENERGY SAVING

At Sematic, we take our energy use seriously.
We have developed a set of technological devices that allow our elevator components to use as little energy as possible, such as our Sematic SDS door controller.

* Door power consumption difference between normal standby mode and parking mode measured in laboratory





2Z execution shown in the picture

MAIN FEATURES		STANDARD			OPTIONS		
Certified locking device		EN81-1/2:1998 Lift Directive 95/16/EC			✗		
Emergency lock release		In the header			In the panel		
Door closing		Spring			✗		
Toe guard		✓			✗		
Brackets		Standard with tolerances: see layout			Adjustable, easy brackets		
Header		Galvanized			RAL		
Frame		W	D	H	W	D	H
		100	60	100	50	60	50
					120	60	160
Sill	2Z	Alu (90 mm)			Slim (45 mm)		
	2R/L	Alu (120 mm)			✗		
Push button cut-out (LOP)		✗			In the side post of the box frame		
Indicator cut-out (LIP)		✗			In the header of the box frame		
Upper tracks		Alu			✗		
Protection		IP 20			✗		
Lock release key		✓			✗		
Packaging		Cardboard box			ISPM-15		

W = Width
D = Depth
H = Header



2R/L execution shown in the picture

2000 B-CUBIC

Car Door

MAIN FEATURES	STANDARD	OPTIONS
Expansion skate	✓	✗
Door drive controller	See pag. 5	SDS
Motor control	DC-PWM Standard	
Header	Galvanized	✗
Car door locking device	✗	EN81-1/2
Cabin door apron	✗	✓
Detecting system	✗	Static
Packaging	Cardboard box	ISPM-15

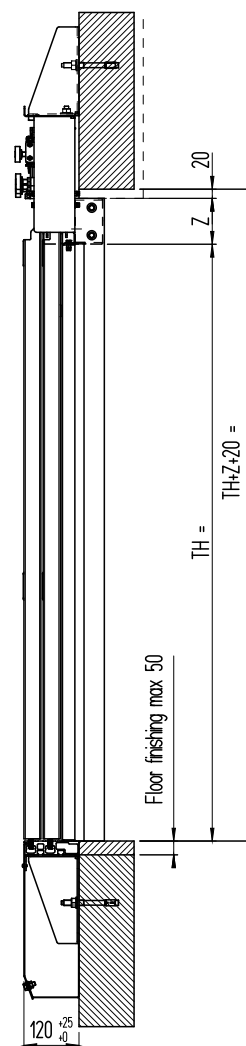
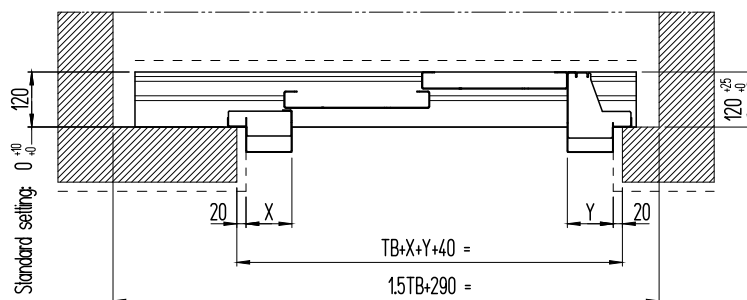
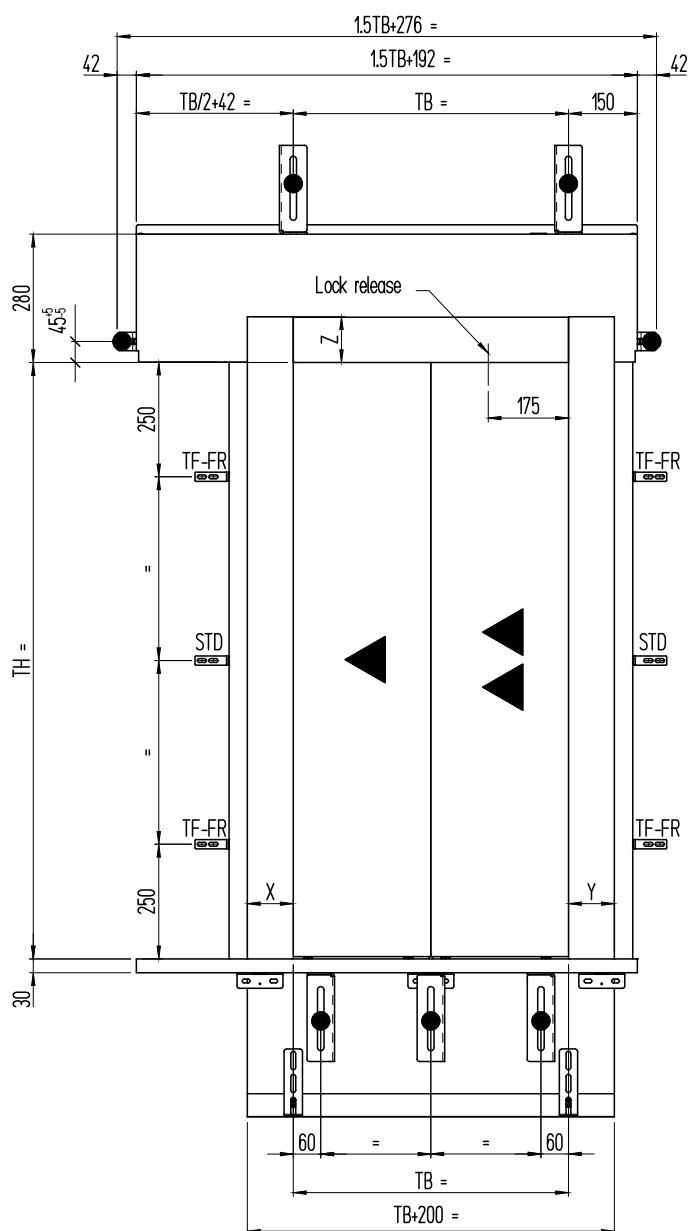
2000 B-CUBIC

Characteristics

MAIN APPLICATION CONTEXT CHARACTERISTICS

Elevator speed [m/sec]	< 2,5
Max number of cycles [nr/year]	250.000
Framed glass panels	✓ only with SDS

2R/L LAYOUT: FRONT, SIDE AND PLAN VIEWS



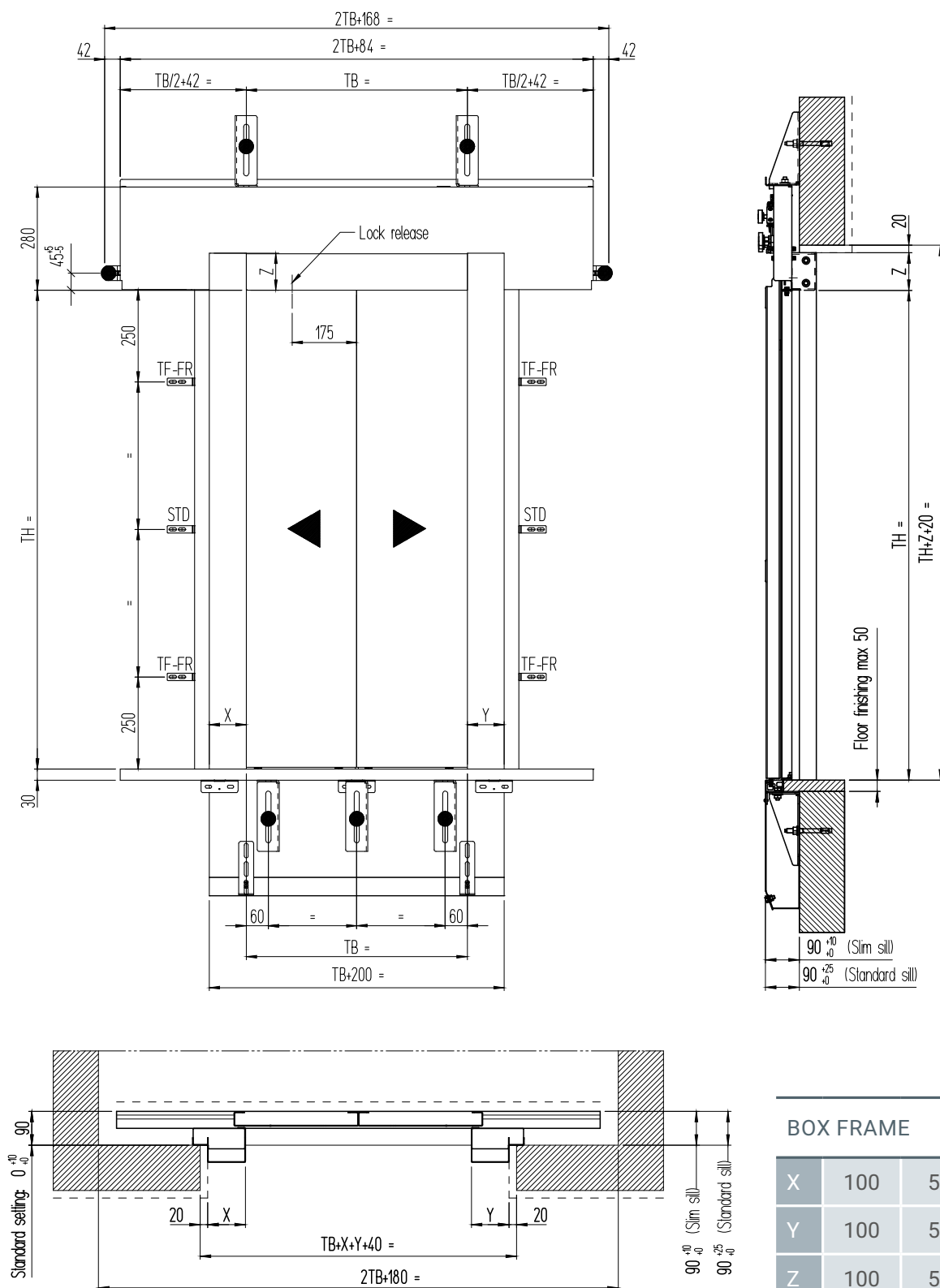
BOX FRAME

X	100	50	120
Y	100	50	120
Z	100	50	160

NOTES

- 2L as drawing, 2R mirrored
- For further information see our technical catalogues
- Setting distance: 0-60 mm with easy brackets

2Z LAYOUT: FRONT, SIDE AND PLAN VIEWS



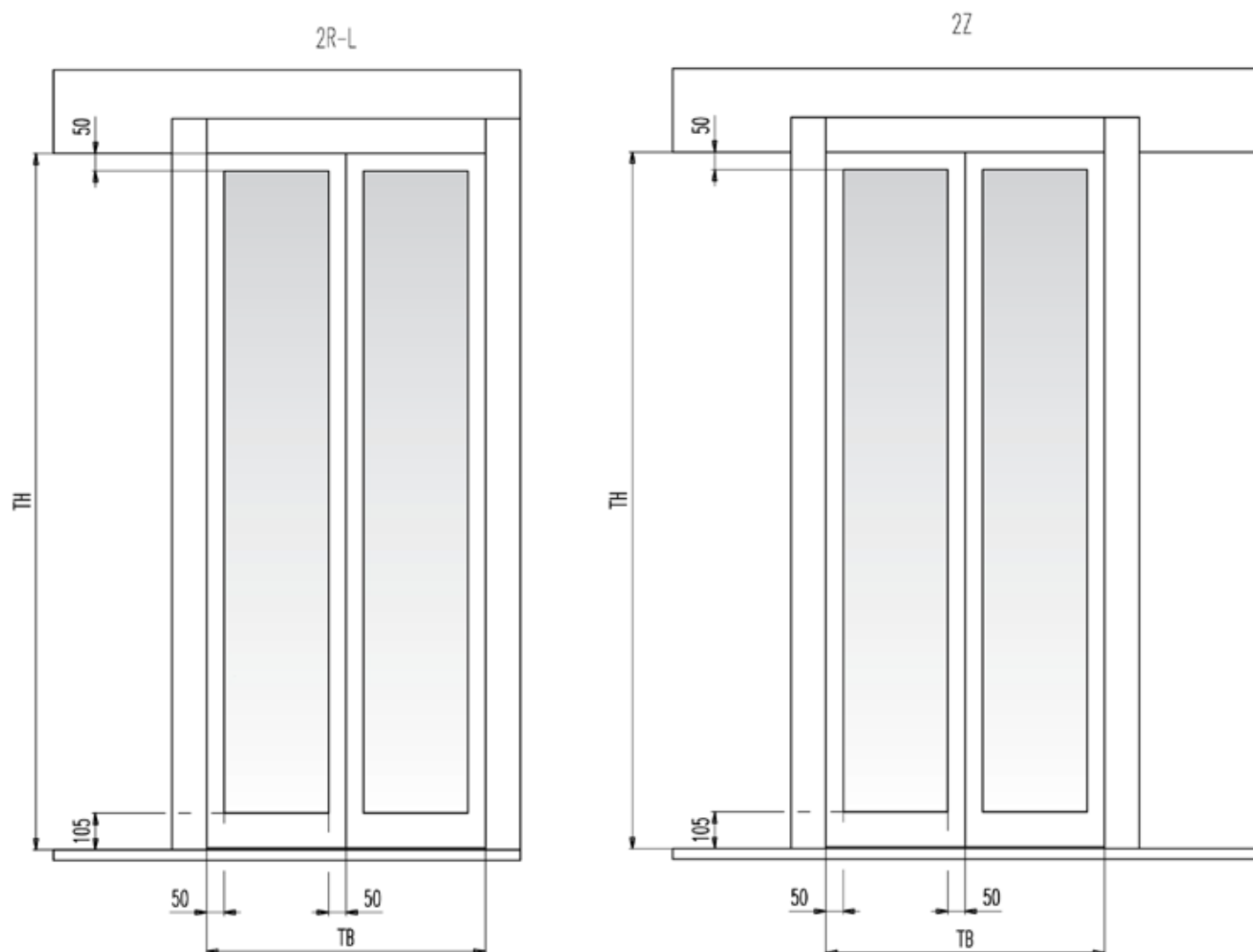
BOX FRAME

X	100	50	120
Y	100	50	120
Z	100	50	160

NOTES

- For further information see our technical catalogues
- Setting distance: 0-60 mm with easy brackets

STANDARD CONSTRUCTION WITH FRAMED GLASS PANELS



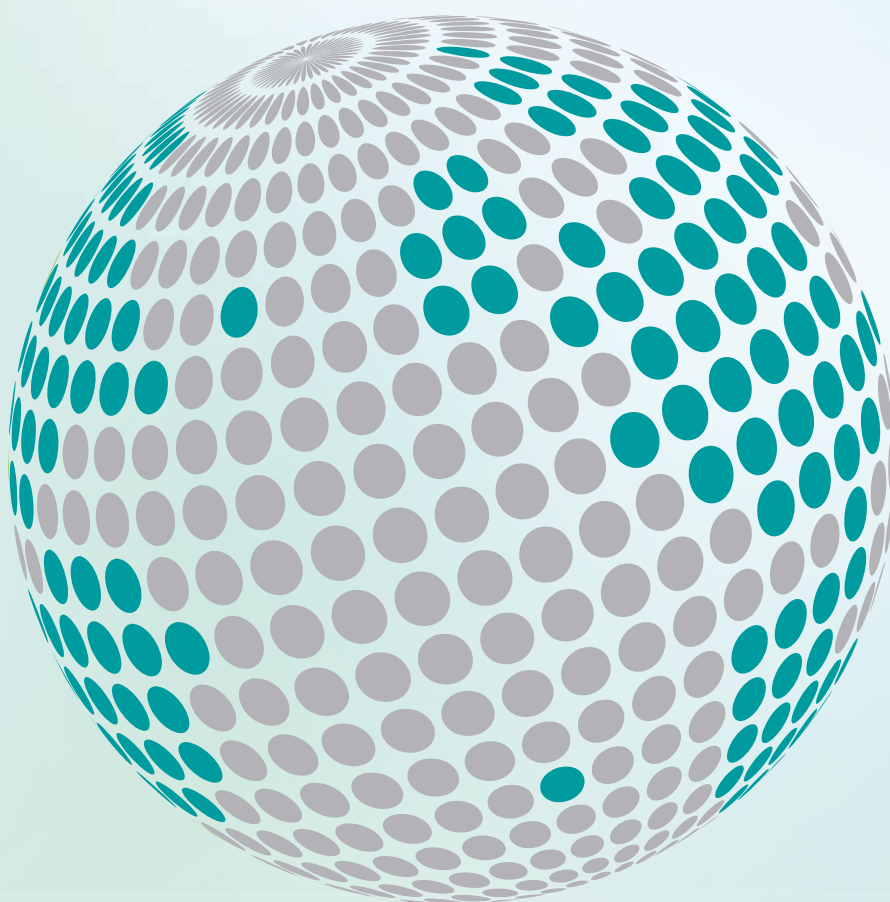
NOTES

- For further information see our technical catalogues





**YOUR GLOBAL PARTNER FOR COMPONENTS,
MODULES AND SYSTEMS IN THE ELEVATOR INDUSTRY**



safety **in** *motion*™

www.wittur.com

More information
about Wittur Group
available on-line.



SELCON®
a WITTUR brand

Liftmaterial
a WITTUR brand

sematic®
a WITTUR brand