

2000 C-CUBIC

DOORS FOR RESIDENTIAL AND OFFICE BUILDINGS



safety **in** motion™

APPLICATIONS		DESTINATION				
		PASSENGERS		GOODS		SPECIAL USES
		DOORS	CARS	DOORS	CARS	DOORS CARS
HOMELIFT		2000 C-CUBIC	ADAPTA VARIO			
RESIDENTIAL		2000 C-CUBIC	ADAPTA		CARGO	CUSTOM
OFFICES		2000 C-CUBIC	ADAPTA		CARGO	CUSTOM PANOR./ CUSTOM
HIGH RISE			VARIO		CARGO	CARGO
HOSPITALS			VARIO		ADAPTA	ADAPTA
TRANSPORT			ADAPTA		CARGO	CUSTOM
MODERNIZATION			EASY ADAPTA		CARGO	CARGO
HOTELS			VARIO		ADAPTA	PANORAMIC CUSTOM
SHOPPING CENTERS			ADAPTA		ADAPTA	CARGO PANOR./ CUSTOM
INDUSTRIAL					CARGO	CUSTOM CARGO



The commodity door with smart technical solutions for quick and easy installation

Sematic 2000 C-CUBIC is an affordable quality, commodity door, suitable for any elevator installed in residential and office buildings.

Available with two-panel telescopic opening, 2000 C-CUBIC car and landing doors can be coupled with other Sematic product lines, guaranteeing high interchangeability and the availability of more options and configurations for your elevator.

Sematic 2000 C-CUBIC includes a series of smart solutions developed in order to guarantee maximum easiness of installation and low maintenance: such as, for example, Sematic new landing door lock design for quicker adjustment as well as door posts that can be installed either partially above the floor level (box frame execution) or completely in the shaft (basic frame execution) and do not require installation in niche.

PRODUCT RANGE

Model	TB min-max (mm)	TH min-max (mm)
K-S 2R/L	800 - 900	2000 - 2100

For further information see our technical catalogues

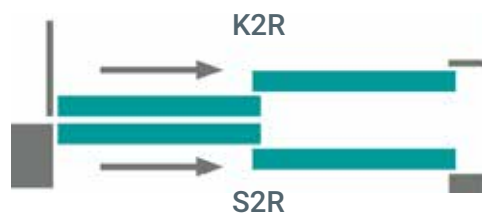
BOTTOM TRACK PACK OVERALL DIMENSION (mm)

Opening	K (car)	S (landing) ⁽²⁾	Pack ⁽¹⁾
2R/L	75	110	215

⁽¹⁾ with 30 mm sill to sill distance

⁽²⁾ Slim sill available too

DOOR OPENING TYPE



FIRE RATED EXECUTIONS - EN 81-58

Model

S 2R/L	EN 81-58 E 120
--------	----------------

CABINS SUGGESTED FOR THIS DOOR

> ADAPTA

STANDARD MOTORIZATION

Belt-driven operator with 24 Vdc optical encoder controller motor, SZS® DC-PWM technology with transformer

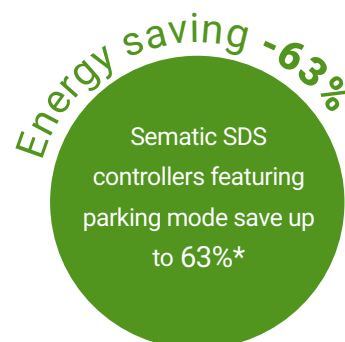
- Power supply voltage: 90-290 Vac, 50-60 Hz
- Power rated: 40 Watt (50 VA)
- Emergency power supply with battery
- Operating temperature range: -5°C to +50°C
- Operating humidity range: up to 80%
- On-board obstacle detection (door re-opening) feature
- Separately adjustable opening and closing speed
- Integrated self-learning cycle and automated speed profiles setting

DOOR AND FRAME FINISHES	STANDARD	OPTIONS
RAL 7032 powder coating	✓	✗
Other RAL Colours	✗	✓
Stainless steel solid construction	✗	✓
BOTTOM TRACK	STANDARD	OPTIONS
Aluminum	✓	✗

SEMATIC FOR ENERGY SAVING

At Sematic, we take our energy use seriously.
We have developed a set of technological devices that allow our elevator components to use as little energy as possible, such as our Sematic SDS door controller.

* Door power consumption difference between normal standby mode and parking mode measured in laboratory





MAIN FEATURES	STANDARD			OPTIONS		
Certified locking device	EN81-1/2:1998 Lift Directive 95/16/EC			✗		
Emergency lock release	In the header			✗		
Door closing	Spring			✗		
Lower Brackets	Tolerance 0/+25 mm			Easy brackets tolerance 0/+40 mm		
Header	Galvanized			RAL		
Frame	BOX FRAME (mm)			BASIC FRAME (mm)		
	W	D	H	W	D	H
	120	60	160	100	36	160
Sill	ALU (110 mm)			SLIM (75 mm)		
Adding Sill Profile	✗			✓		
Minimum inter-floor distance	TH+650 mm			✗		
Apron	H=250 mm			✗		
Noise level	55dB(A)			✗		
Protection	IP 20			✗		
Lock release key	✓			✗		
Packaging	Cardboard box			✗		

W = Width
D = Depth
H = Header

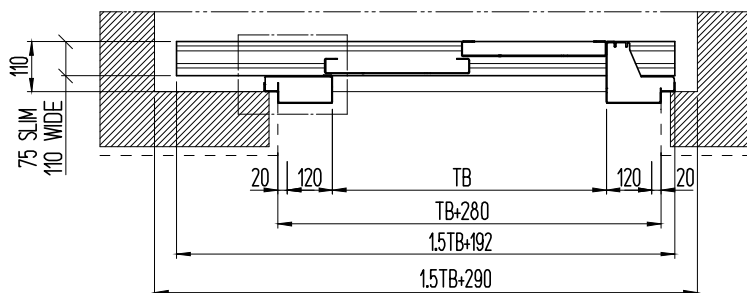
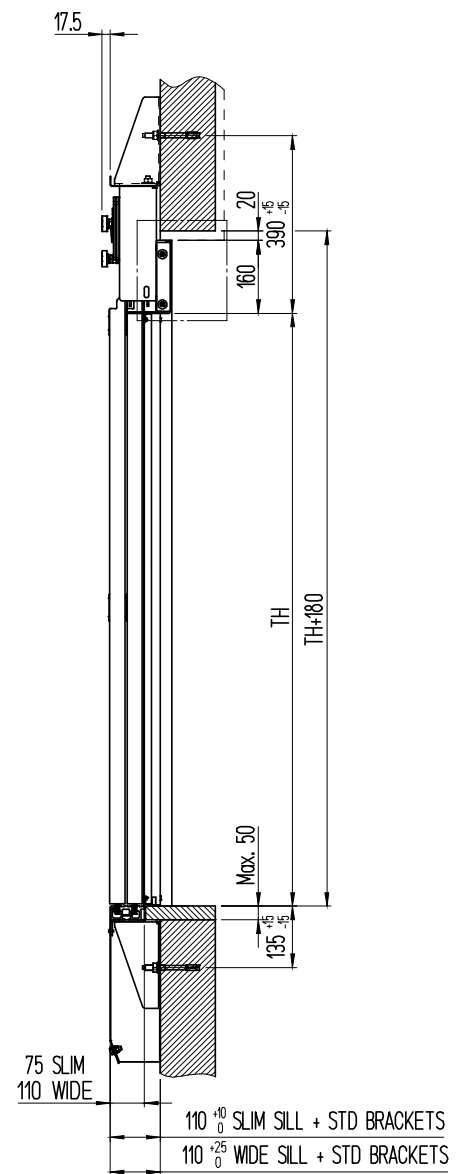
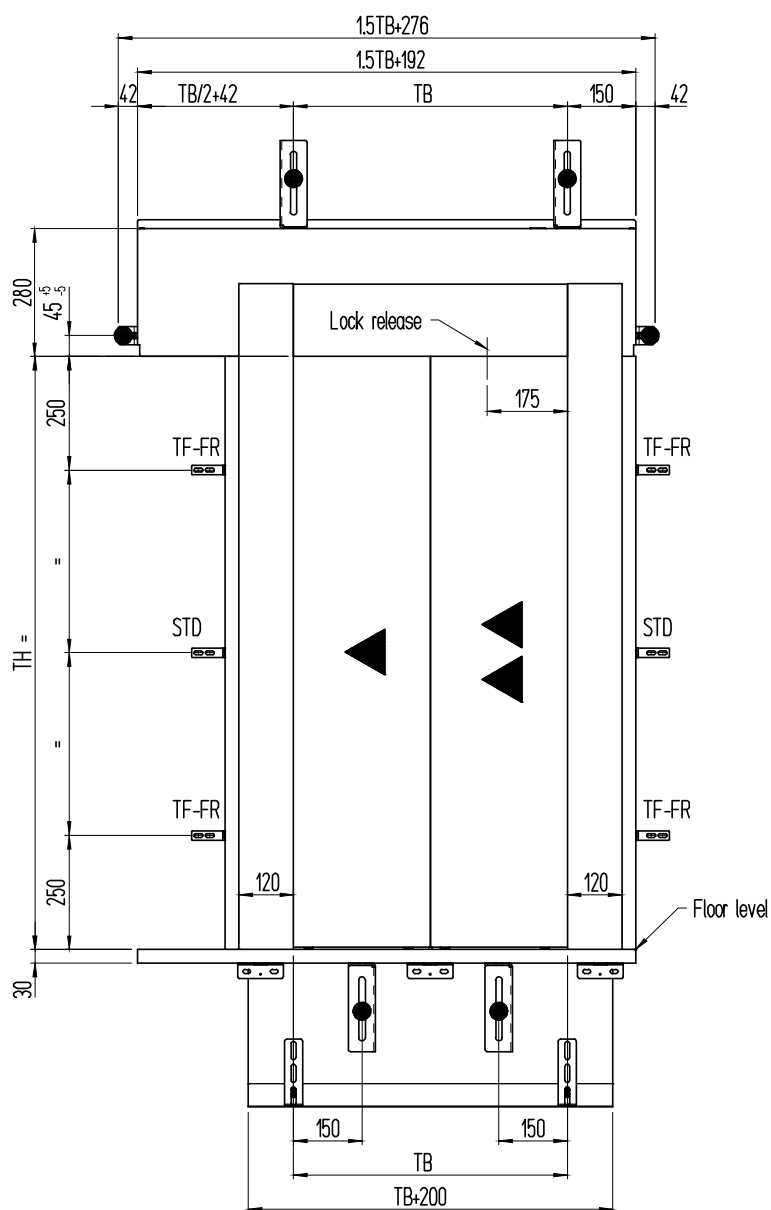
2L execution
shown in the picture

MAIN FEATURES	STANDARD	OPTIONS
Expansion skate	✓	✗
Motorization	See pag. 5	SDS
Door controller	DC-PWM Standard	
Car door locking device	✗	EN81-1/2
Noise level	55dB(A)	✗
Door panels	Single skin	✗
Sill	ALU	✗
Apron	✗	H=750 mm
Protection	IP 20	✗
Packaging	Cardboard box	✗

MAIN APPLICATION CONTEXT CHARACTERISTICS

Elevator speed [m/sec]	< 2,5
Life cycle	4 millions
Max number of stops	20
Sill load	max. 600 Kg

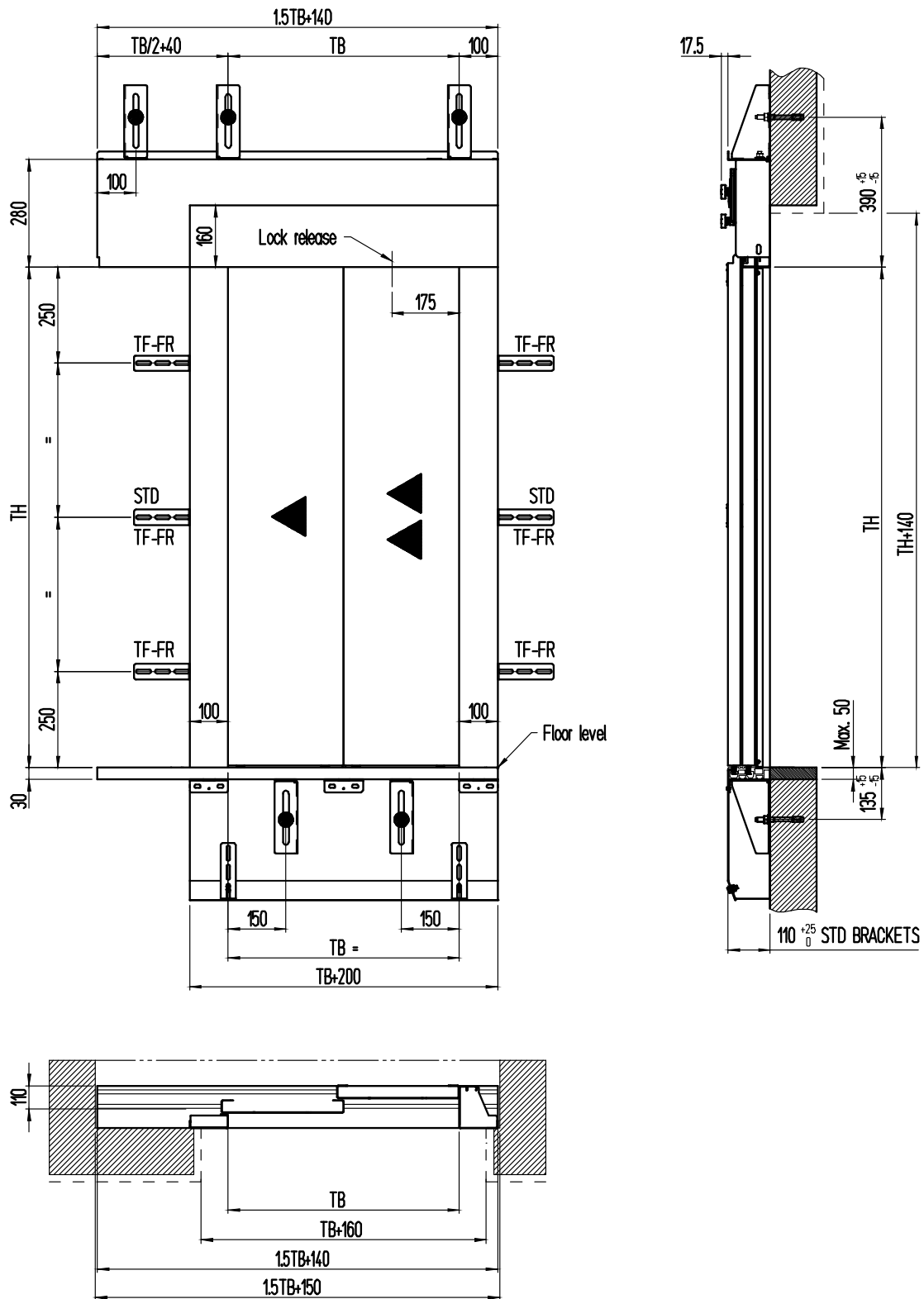
2L BOXED FRAME 120 LAYOUT: FRONT, SIDE AND PLAN VIEWS



NOTES

- 2L as drawing, 2R mirrored
- Sill to sill distance 30 mm
- For further information see our technical catalogues

2L BASIC FRAME 100 LAYOUT: FRONT, SIDE AND PLAN VIEWS



NOTES

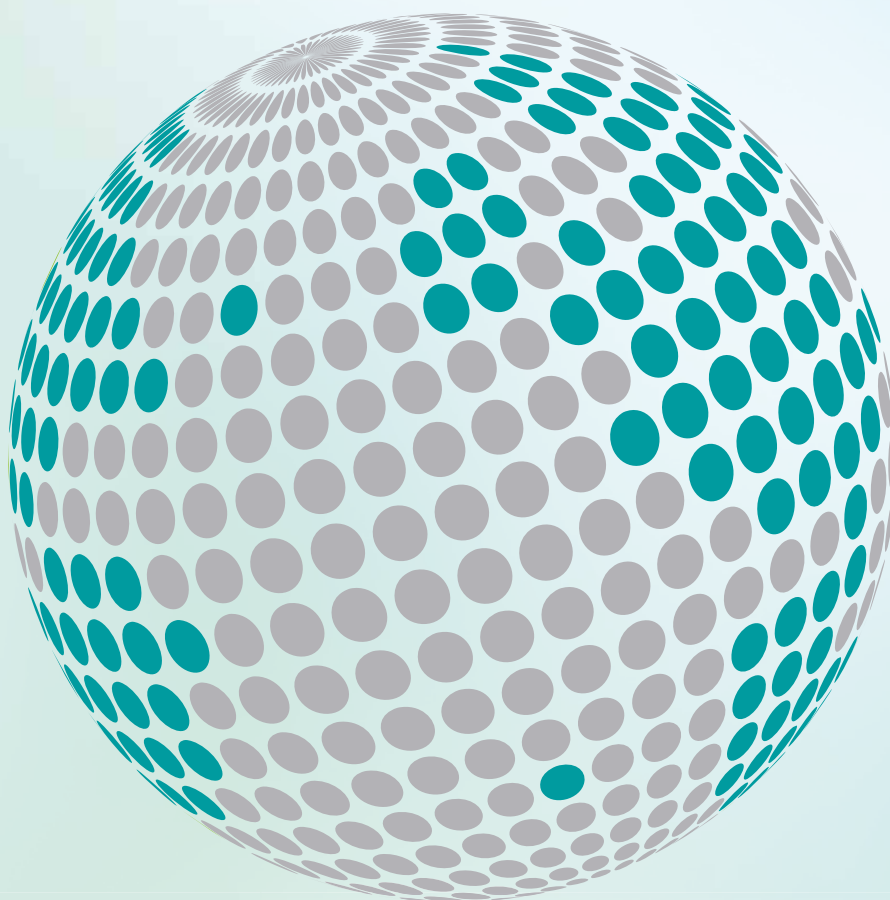
- 2L as drawing, 2R mirrored
- Sill to sill distance 30 mm
- For further information see our technical catalogues







**YOUR GLOBAL PARTNER FOR COMPONENTS,
MODULES AND SYSTEMS IN THE ELEVATOR INDUSTRY**



safety **in** *motion*™

www.wittur.com

More information
about Wittur Group
available on-line.



SELCON®
a WITTUR brand

Liftmaterial
a WITTUR brand

sematic®
a WITTUR brand