

2000 B-HR

DOORS FOR HIGH-RISE ELEVATORS



safety **in** motion™

| APPLICATIONS | | DESTINATIONS | | | | | |
|---------------------|---|---|-----------------|-------|--------|--------------|-----------------------------|
| | | PASSENGERS | | GOODS | | SPECIAL USES | |
| | | DOORS | CARS | DOORS | CARS | DOORS | CARS |
| HOMELIFT |  | | ADAPTA VARIO | | | | |
| RESIDENTIAL |  | 2000 B-HR LOW | ADAPTA | | CARGO | | CUSTOM |
| OFFICES |  | 2000 B-HR LOW | ADAPTA | | CARGO | | CUSTOM PANOR./ CUSTOM |
| HIGH RISE |  | 2000 B-HR MED 2000 B-HR TOP | VARIO | | CARGO | | CARGO |
| HOSPITALS |  | 2000 B-HR LOW | VARIO | | ADAPTA | | ADAPTA |
| TRANSPORT |  | 2000 B-HR LOW | ADAPTA | | CARGO | | CUSTOM |
| MODERNIZATION |  | | EASY ADAPTA | | CARGO | | CARGO |
| HOTELS |  | 2000 B-HR LOW 2000 B-HR MED 2000 B-HR TOP | VARIO | | ADAPTA | | PANORAMIC CUSTOM |
| SHOPPING CENTERS |  | 2000 B-HR LOW | ADAPTA | | ADAPTA | | CARGO PANOR./ CUSTOM |
| INDUSTRIAL |  | | | | CARGO | | CUSTOM CARGO |



Aiming higher and higher as fast, safely and comfortably as possible

Sematic 2000 B-HR is the ideal solution for passenger movement within all high-rise buildings, as it includes: fast, quiet and smooth door opening and closing (allowing for efficient traffic management flow), exceptional robustness, excellent transport comfort, unrivalled aesthetic properties and all in full compliance with the most stringent safety regulations.

All of its components and technical solutions have been

analyzed and endurance tested in our laboratories across millions of cycles, ensuring that this door guarantees constant high performance over a long life.

A wide range of finishes, options and certifications are available too. For all these reasons, Sematic 2000 B-HR has been selected by companies, architects, and consultants for installation in some of the world's most prestigious buildings.

All the information and pictures are related to MED and TOP configurations. For HR-LOW see our technical catalogues.

PRODUCT RANGE

| Model | TB min-max (mm) | TH min-max (mm) |
|----------|-----------------|-----------------|
| K-S 2R/L | 800 - 1400 | 2000 - 3000 |
| K-S 2Z | 800 - 1400 | 2000 - 3000 |
| K-S 4Z | 1300 - 2200 | 2000 - 3000 |

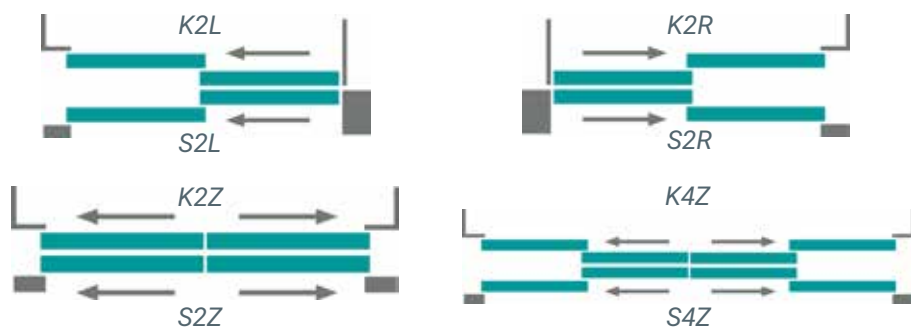
For further information see our technical catalogues

BOTTOM TRACK PACK OVERALL DIMENSION (mm)

| Opening | K (car) | S (landing) | Pack ⁽¹⁾ |
|---------|---------|-------------|---------------------|
| 2R/L | 120 | 120 | 265 |
| 2Z | 85 | 90 | 200 |
| 4Z | 120 | 120 | 265 |

⁽¹⁾ 25mm bottom track distance

DOOR OPENING TYPE



FIRE RATED EXECUTIONS - EN 81-58

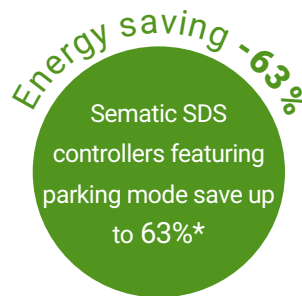
| Model | Steel doors | Framed glass doors |
|--------|-----------------------------------|--------------------|
| S 2R/L | E 120 EW 60 EI 60 EI 120 | E 120 |
| S 2Z | | |
| S 4Z | | |

BS 476, GOST and many other certifications available. Call for information.

SEMATIC FOR ENERGY SAVING

At Sematic, we take our energy use seriously. We have developed a set of technological devices that allow our elevator components to use as little energy as possible, such as our Sematic SDS door controller.

* Door power consumption difference between normal standby mode and parking mode measured in laboratory



CABIN SUGGESTED FOR THIS DOOR

> VARIO

All the information and pictures are related to MED and TOP configurations. For HR-LOW see our technical catalogues.

| VERSION | LOW | MED | TOP |
|---------------------------|------------------------------------|--|--|
| Typical application | Residential Mid-rise and High-rise | Mid-rise offices | High-traffic flow offices |
| Elevator speed | < 4m/s | 4-6m/s | > 6m/s |
| Door drive controller | SDS | SDS HV | SDS HV |
| Motor control | DC PWM Standard | Vector control | Vector control |
| Skate type | Std expansion skate | HR2 expansion skate | HR2 expansion skate |
| Main supply | 90-230 Vac 50-60Hz Single phase | 230/400 Vac 50-60Hz Single/Three-phase* | 230/400 Vac 50-60Hz Single/Three-phase* |
| Motor type | 24 Vdc | Brushless 5A | Brushless 8A |
| Max moving mass | 240 kg | 320 kg | 400 kg |
| Active clutch | - | Standard | Standard |
| Backup battery | - | Standard | Standard |
| KPC closing panel contact | - | Standard | Standard |

(*) depending on the application

STANDARD MOTORIZATION *

Belt-driven operator with 230/430 Vac Brushless Motor with optical Encoder controlled by an electronic card with microprocessor (SDS® - AC-VVVF HV-MV Technology)

- Power supply voltage: 230/400 Vac single phase or three phase
- Installed power: variable according to the supplied motor and power supply
- Operating temperature range: from -10°C to +60°C
- Operating humidity range: from up to 80% non-condensing
- On-board obstacle detection (door re-opening) feature
- Separately adjustable opening and closing speed
- Integrated self-learning cycle and automated speed profiles setting
- Self-learning cycle at the first installation in order to acknowledge door dimension and form opening and closing curves
- Double TB opening management

| DOOR AND FRAME FINISHES | STANDARD | OPTIONS |
|---------------------------|----------|---------|
| RAL 9005 | ✓ | ✗ |
| Other RAL Colours | ✗ | ✓ |
| Framed glass panels | ✗ | ✓ |
| Stainless steel claddings | ✗ | ✓ |
| Full glass | ✗ | Custom |

| BOTTOM TRACK | STANDARD | OPTIONS |
|-----------------|----------|---------------------|
| Aluminum | ✓ | ✗ |
| Steel | ✗ | ✓ |
| Stainless steel | ✗ | AISI 304 / AISI 316 |

All the information and pictures are related to MED and TOP configurations. For HR-LOW see our technical catalogues.




2Z TOP execution shown
in the picture

| MAIN FEATURES | STANDARD | OPTIONS |
|------------------------------|---|---|
| Certified locking device | ✓ EN81-1/2 ✓ EN81-20/50 | ✗ |
| Position of the lock release | Integrated in the header (Low) Integrated in the side post (Med/Top) Spring (Low) | ✗ |
| Door closing | Counterweight (Top/Med 2RL) Spirator (Med 2Z) | Counterweight (Med 2Z) |
| Door panels | Single skin (Med-Low) Double skin (Top) | Double skin (Med-Low) |
| Header height | 280 mm | ✗ |
| Frame | Boxed 100x100 mm door posts | Boxed 50x50 mm door posts Angle 100x45 mm door posts Basic 100x45 mm door posts |
| Installation | Door posts partially on the floor | In the shaft |
| Kit man in the pit | In case of EN81-20/50 | In case of EN81-1/2 |
| Monostable contact | ✗ | Only Custom |
| Impact robust packaging | Seaworthy | ✗ |

SPECIAL EXECUTION

OPTIONS

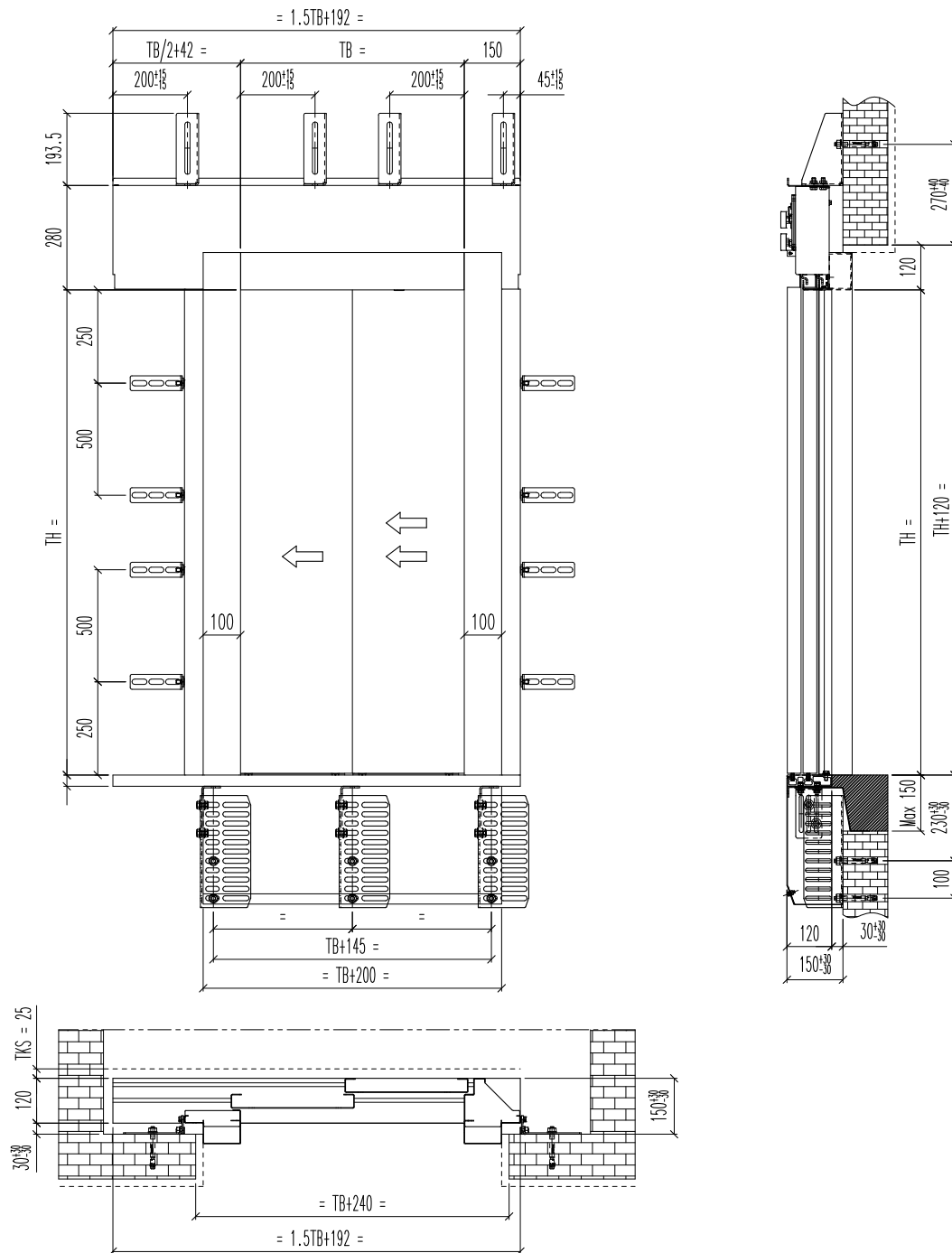
| | |
|-----------------------|---------|
| Air-seal execution | ✓ |
| Anti-vandal execution | EN81-71 |
| Australia execution | ✓ |

All the information and pictures are related to MED and TOP configurations. For HR-LOW see our technical catalogues.



| MAIN FEATURES | STANDARD | OPTIONS |
|----------------------------------|---|---|
| Locking device | EN81-20/50 EN81-1/2 | x |
| Skate | Expansion (Low) Expansion HR (Top-Med) | x |
| Motorization | See page 5 | x |
| Door controller | SDS DC PWM (Low) SDS Brushless AC-VVVF HV (Top/Med) and controller HR2 active clutch IP54 | x |
| Door panels | Single skin (Low) Double skin (Top/Med) | Double skin (Low) |
| Detecting system | x | Dynamic / Static (Low) Dynamic (Top/Med) |
| Operator height | 490 mm | x |
| Average car door cycles per year | 800.000 (Low/Med) 900.000 (Top) | x |
| Impact robust packaging | Seaworthy | x |
| Active clutch | ✓ by motor (only for Top and Med) | x |
| Retractable safety edge | x | ✓ |
| Car front sealing (CFS) | x | ✓ (only for Top and Med) |

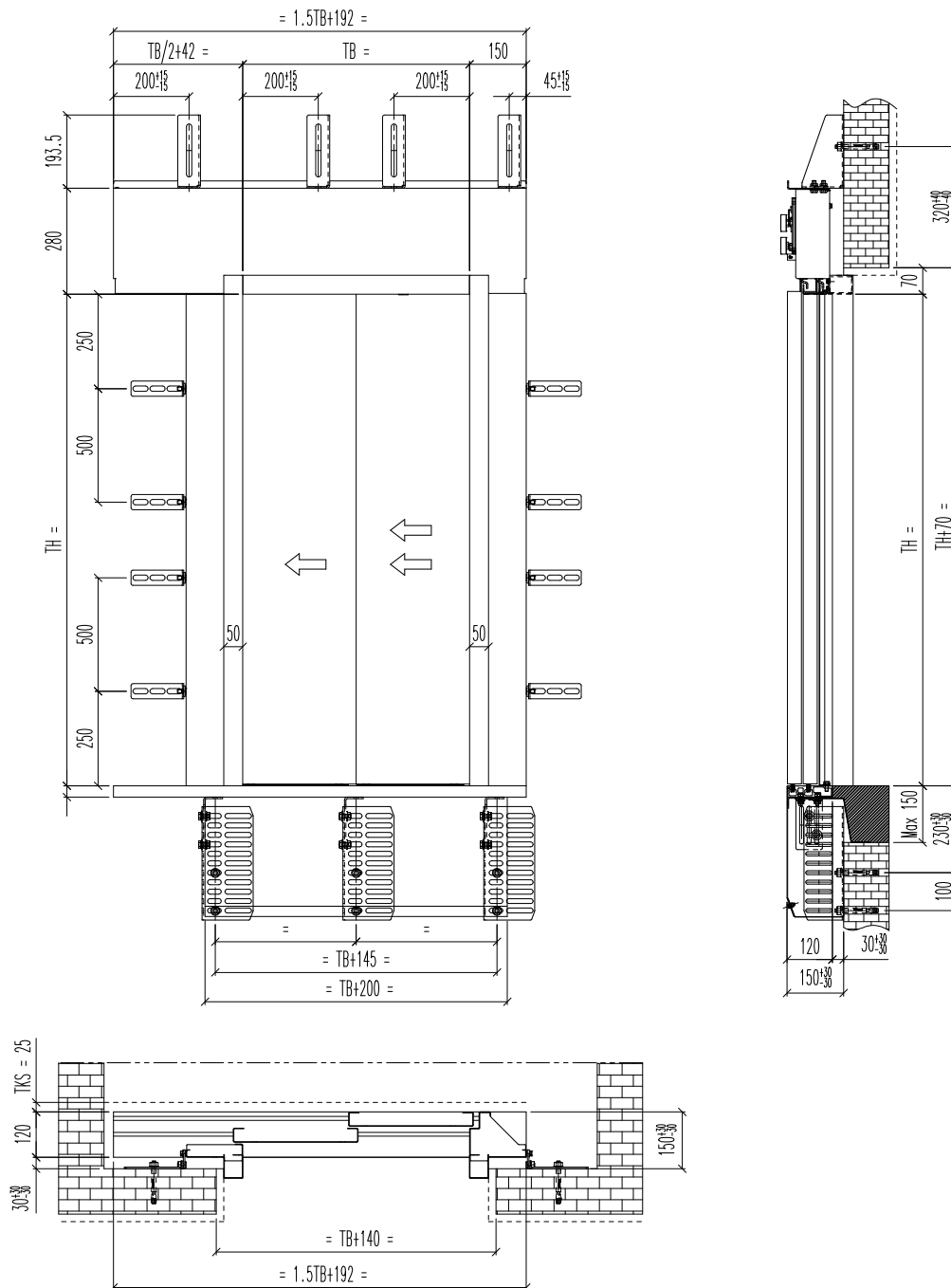
2L BOXED FRAME 100 LAYOUT: FRONT, SIDE VIEWS AND COUPLING



NOTES

- Boxed frame 100 mm
- 2L as drawing, 2R mirrored
- Sill to sill distance 25 mm
- Setting distance: ± 30 mm with adjustable brackets
- Finished floor level from 50 to 250 mm
- For further information see our technical catalogues

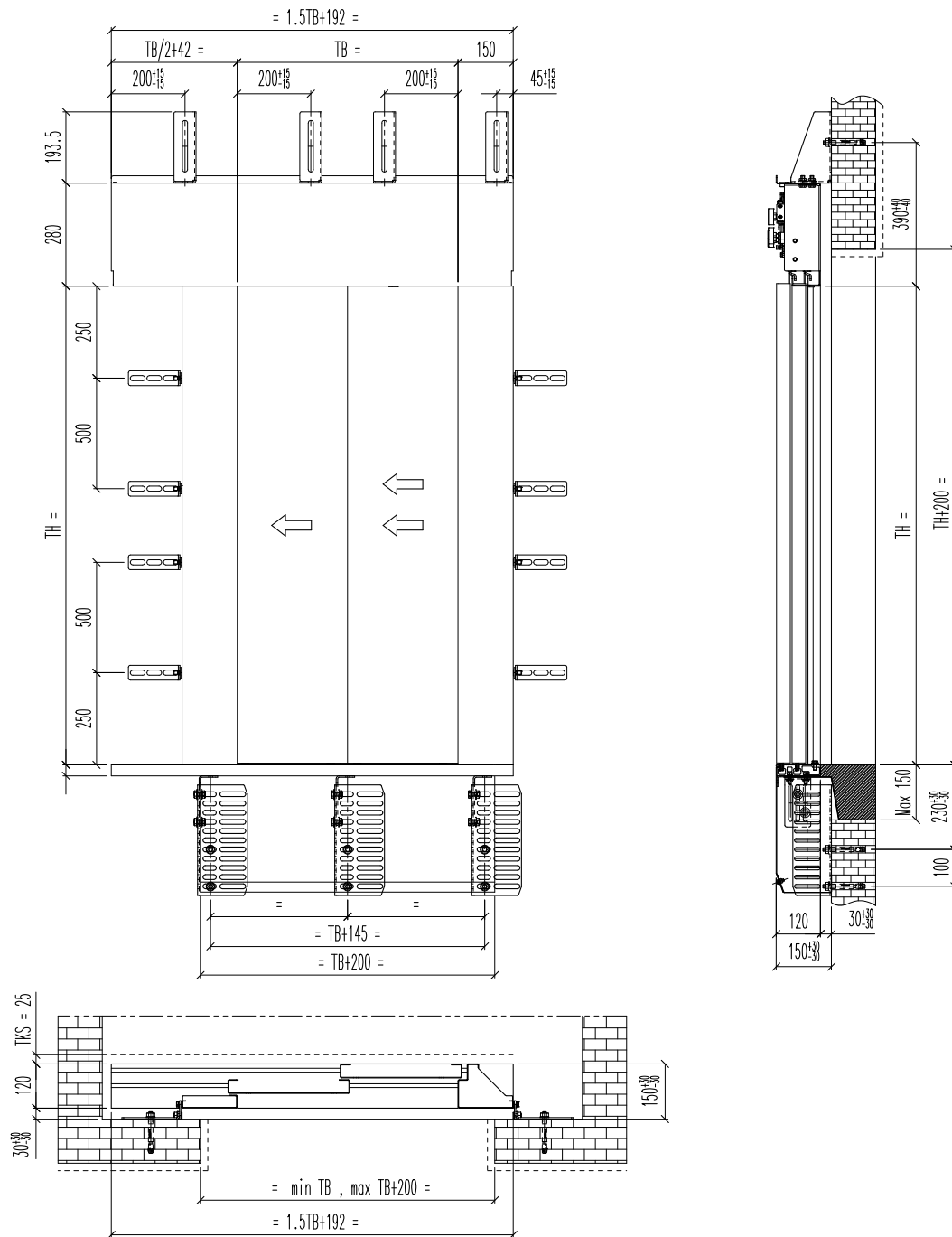
2L BOXED FRAME 50 LAYOUT: FRONT, SIDE VIEWS AND COUPLING



NOTES

- Boxed frame 50 mm (optional)
- 2L as drawing, 2R mirrored
- Sill to sill distance 25 mm
- Setting distance: ± 30 mm with adjustable brackets
- Finished floor level from 50 to 250 mm
- For further information see our technical catalogues

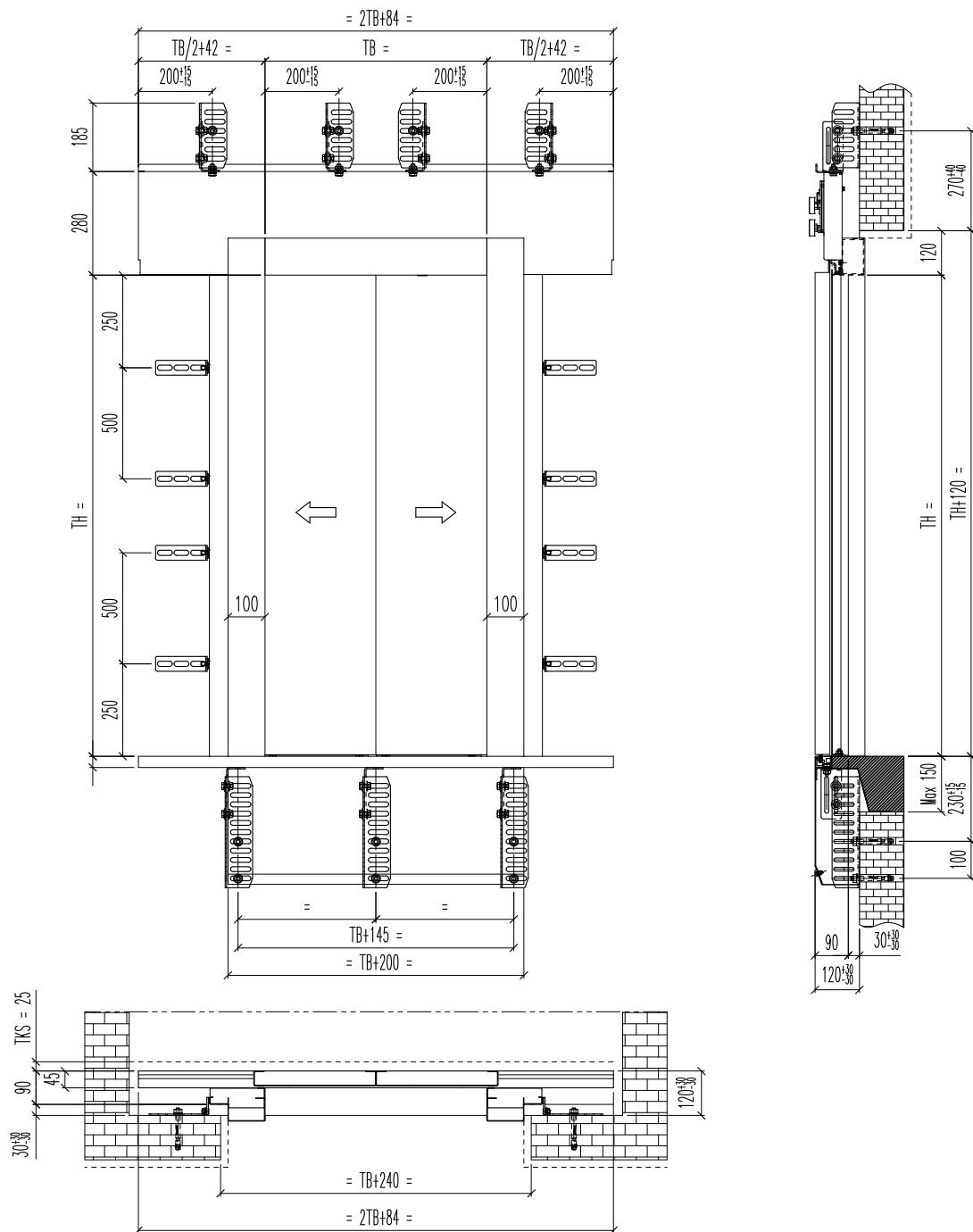
2L BASIC FRAME LAYOUT: FRONT, SIDE VIEWS AND COUPLING



NOTES

- Basic frame (optional)
- 2L as drawing, 2R mirrored
- Sill to sill distance 25 mm
- Setting distance: ± 30 mm with adjustable brackets
- Finished floor level from 50 to 250 mm
- For further information see our technical catalogues

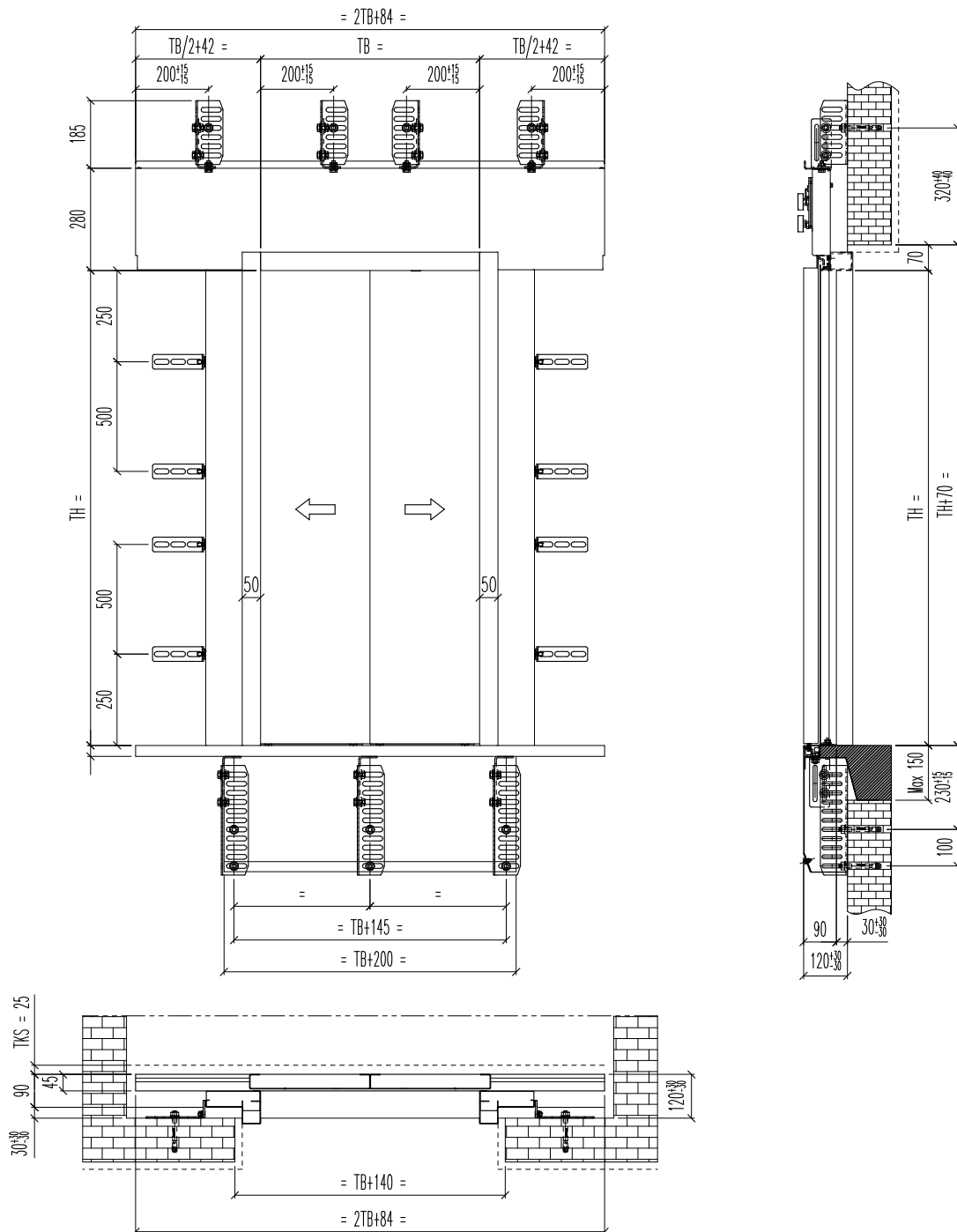
2Z BOXED FRAME 100 LAYOUT: FRONT, SIDE VIEWS AND COUPLING



NOTES

- Boxed frame 100 mm
- Sill to sill distance 25 mm
- Setting distance: ± 30 mm with adjustable brackets
- Finished floor level from 50 to 250 mm
- For further information see our technical catalogues

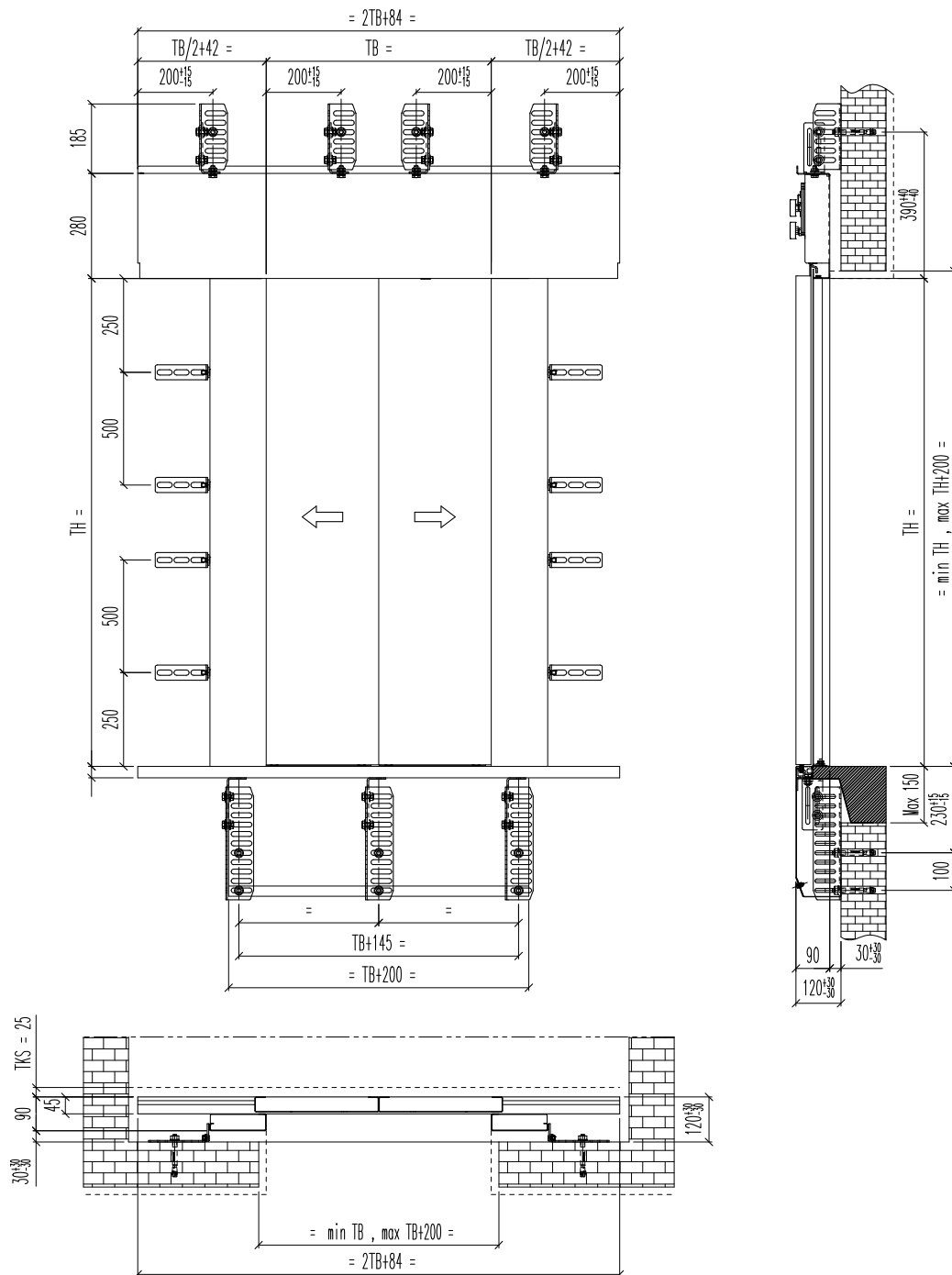
2Z BOXED FRAME 50 LAYOUT: FRONT, SIDE VIEWS AND COUPLING



NOTES

- Boxed frame 50 mm (optional)
- Sill to sill distance 25 mm
- Setting distance: ± 30 mm with adjustable brackets
- Finished floor level from 50 to 250 mm
- For further information see our technical catalogues

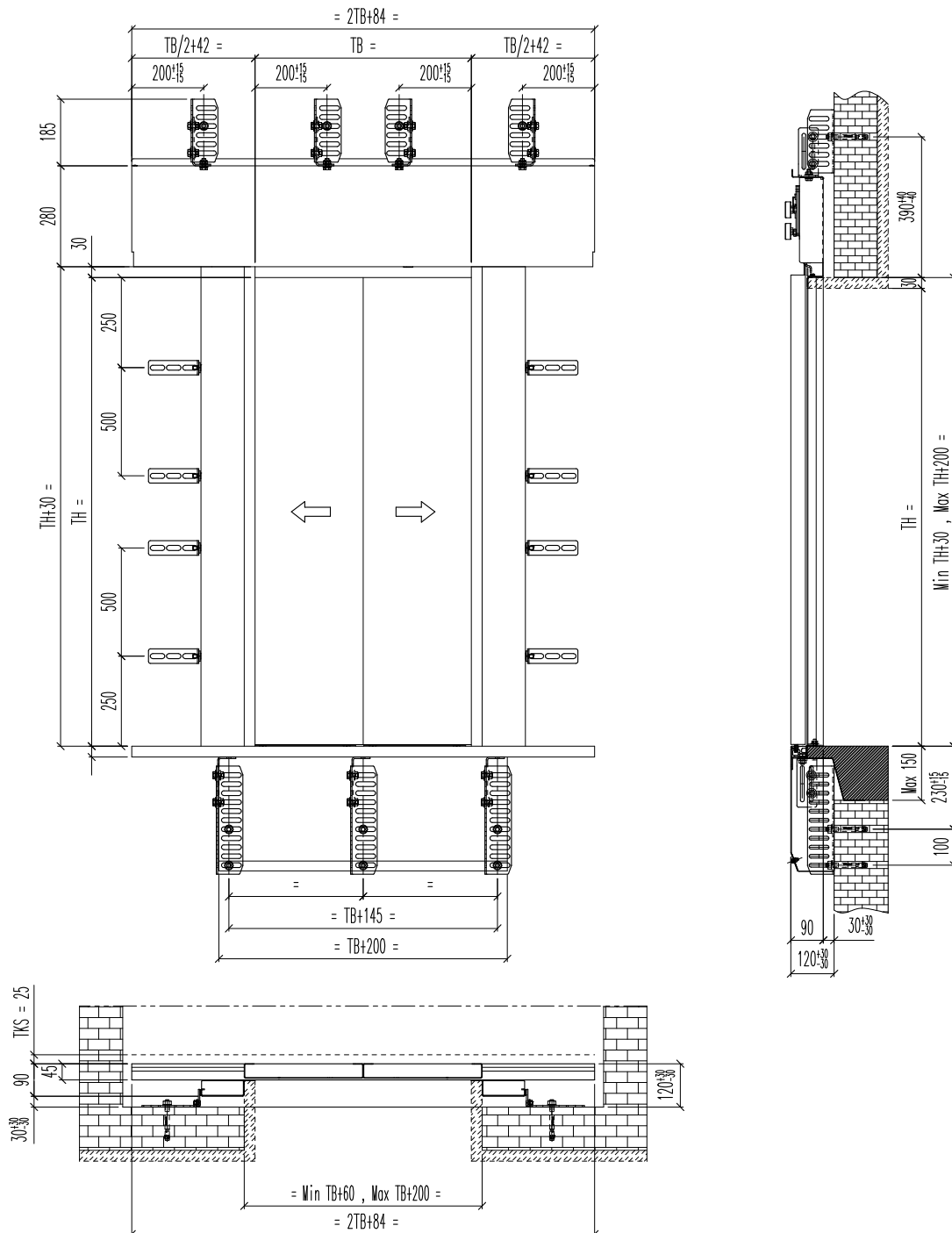
2Z BASIC FRAME LAYOUT: FRONT, SIDE VIEWS AND COUPLING



NOTES

- Basic frame (optional)
- Sill to sill distance 25 mm
- Setting distance: ± 30 mm with adjustable brackets
- Finished floor level from 50 to 250 mm
- For further information see our technical catalogues

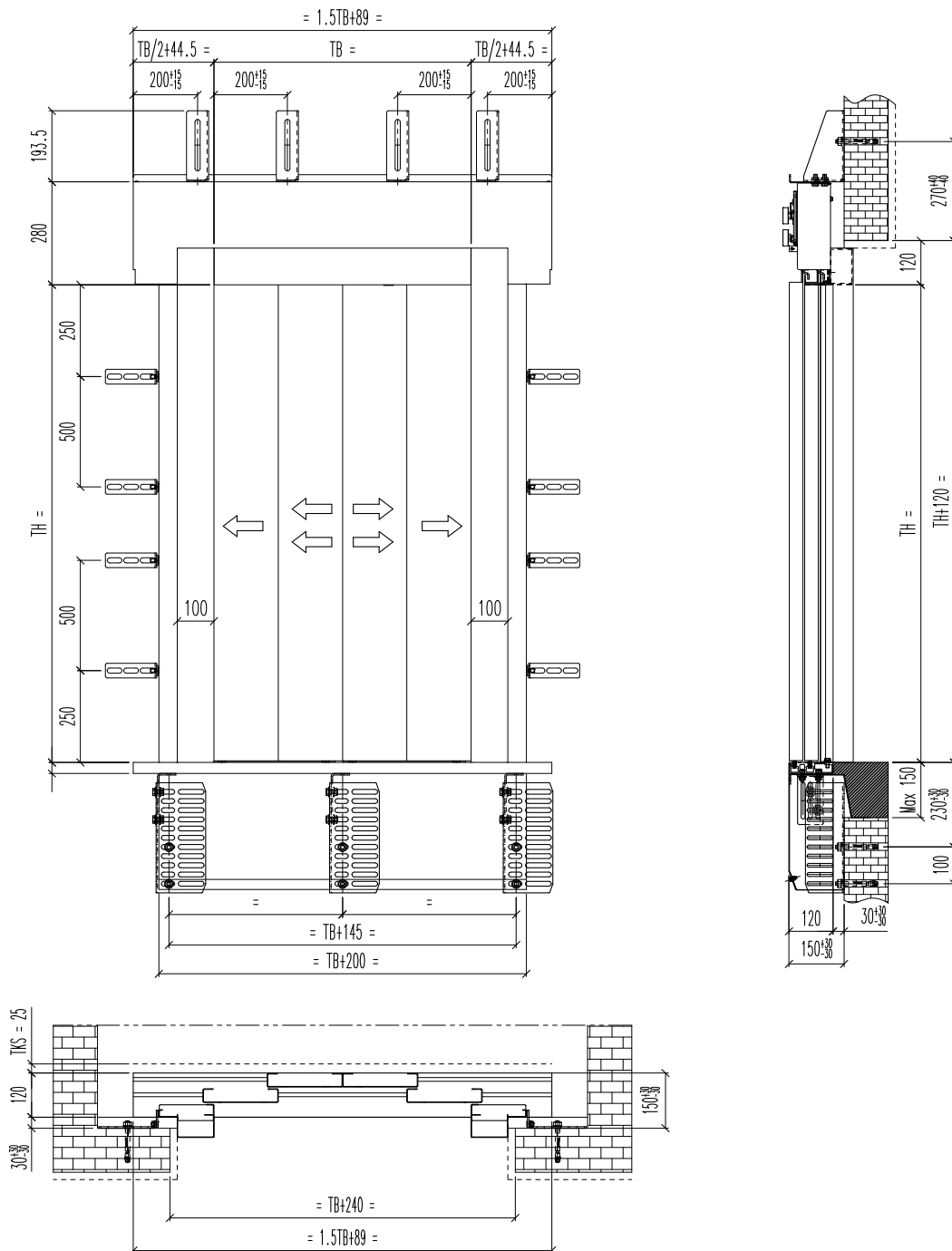
2Z ANGLE FRAME LAYOUT: FRONT, SIDE VIEWS AND COUPLING



NOTES

- Angle frame (optional)
- Sill to sill distance 25 mm
- Setting distance: ± 30 mm with adjustable brackets
- Finished floor level from 50 to 250 mm
- For further information see our technical catalogues

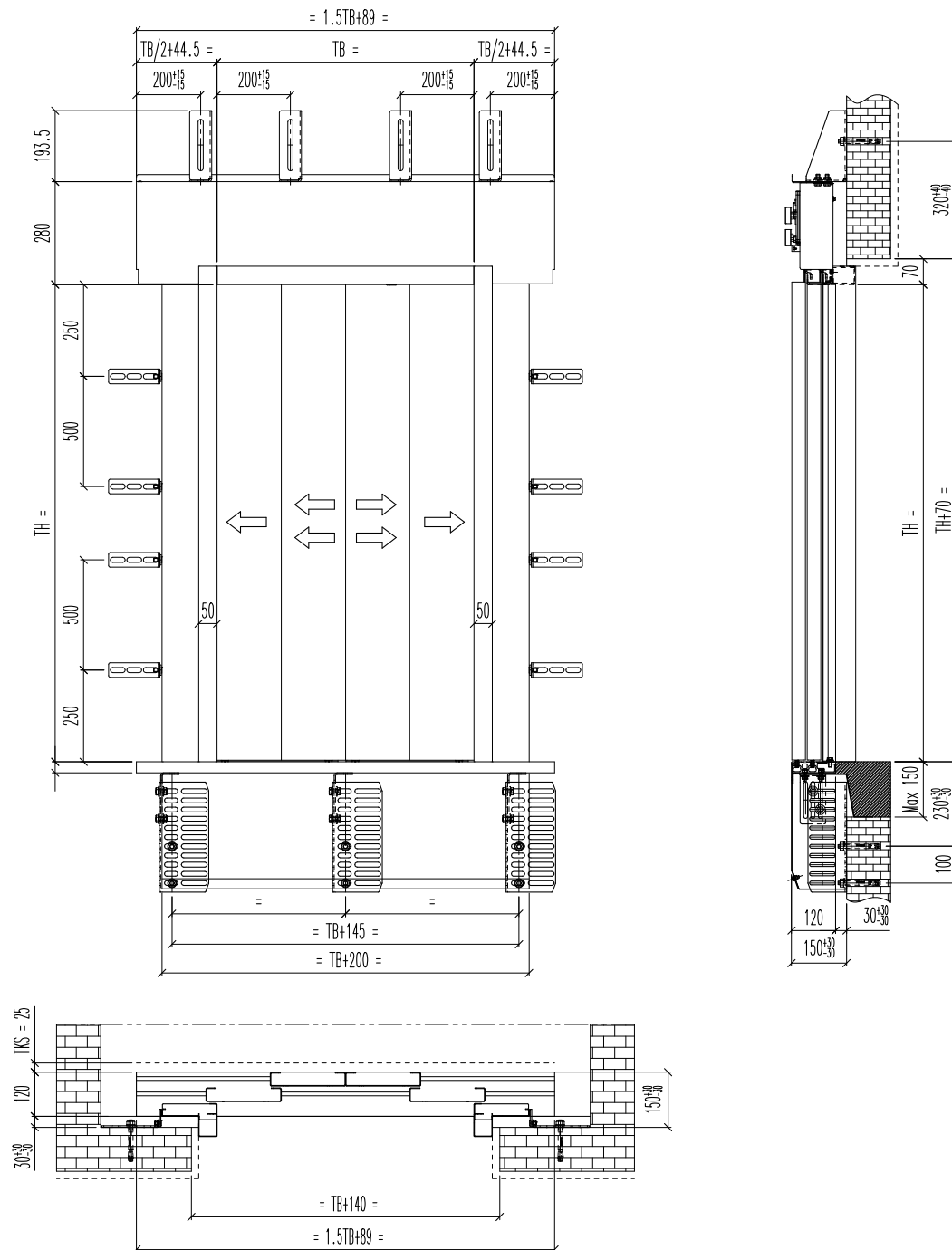
4Z BOXED FRAME 100 LAYOUT: FRONT, SIDE VIEWS AND COUPLING



NOTES

- Boxed frame 100 mm
- Sill to sill distance 25 mm
- Setting distance: ± 30 mm with adjustable brackets
- Finished floor level from 50 to 250 mm
- For further information see our technical catalogues

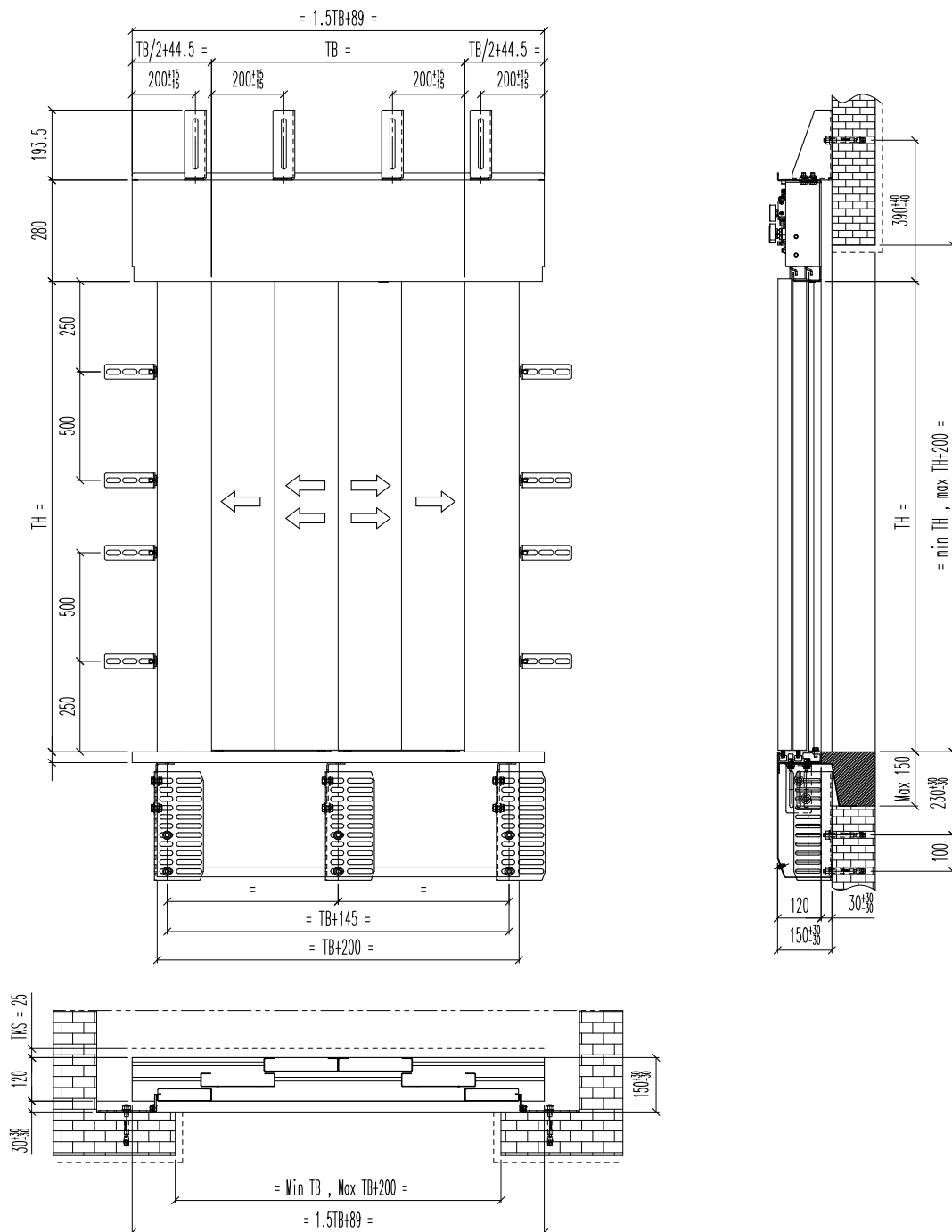
4Z BOXED FRAME 50 LAYOUT: FRONT, SIDE VIEWS AND COUPLING



NOTES

- Boxed frame 50 mm (optional)
- Sill to sill distance 25 mm
- Setting distance: ± 30 mm with adjustable brackets
- Finished floor level from 50 to 250 mm
- For further information see our technical catalogues

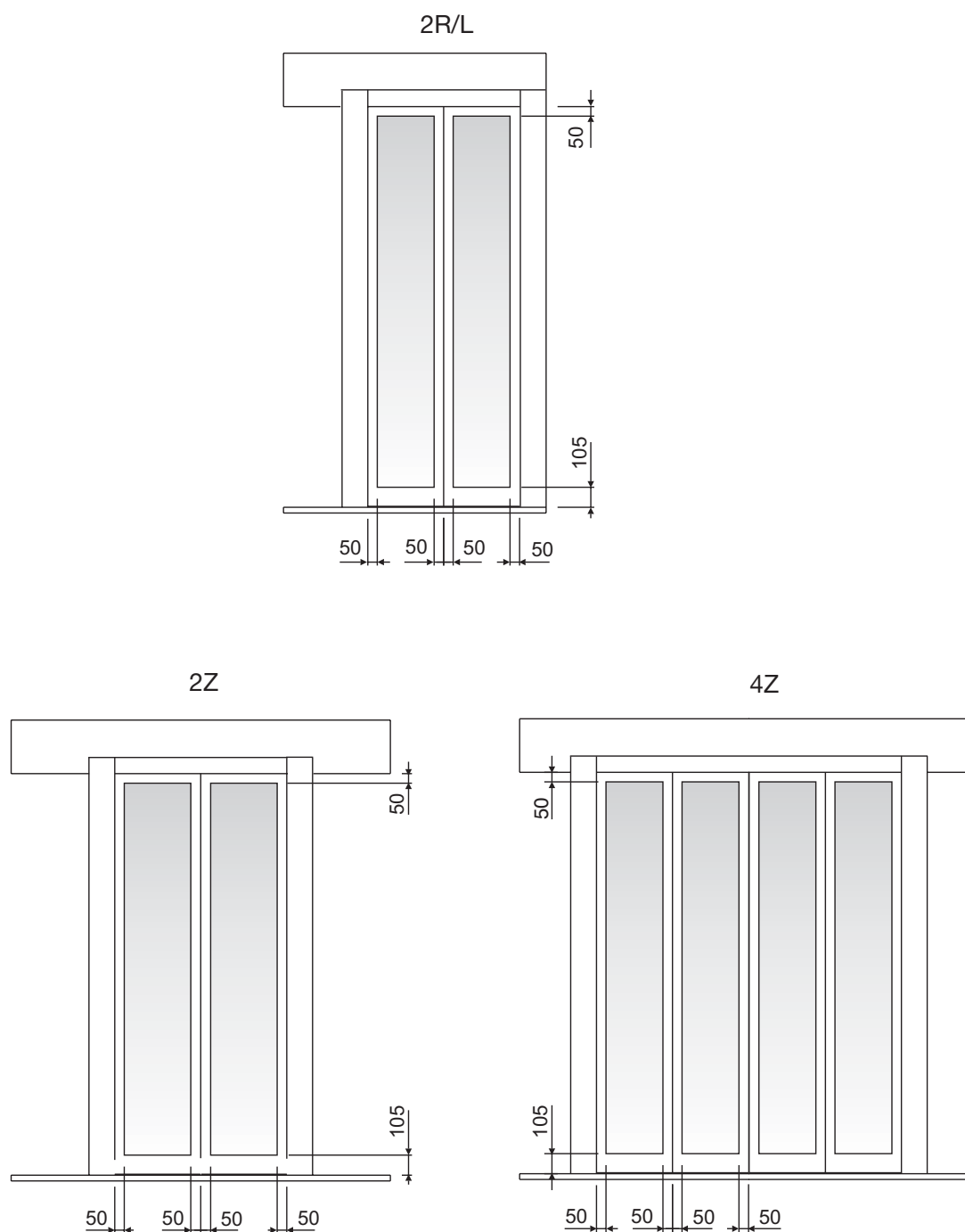
4Z BASIC FRAME LAYOUT: FRONT, SIDE VIEWS AND COUPLING



NOTES

- Basic frame (optional)
- Sill to sill distance 25 mm
- Setting distance: ± 30 mm with adjustable brackets
- Finished floor level from 50 to 250 mm
- For further information see our technical catalogues

STANDARD DIMENSIONS FOR FRAMED GLASS PANELS



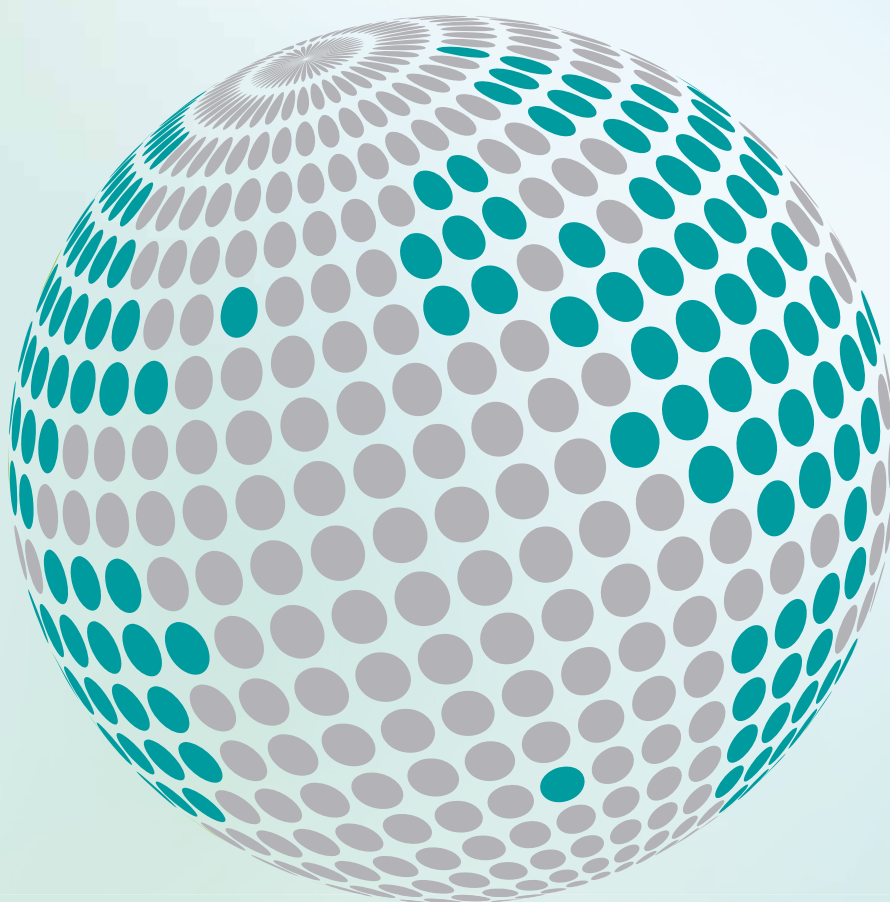
NOTES

- EN 81-58 and BS476 glass panels available too.
- For further information see our technical catalogues





**YOUR GLOBAL PARTNER FOR COMPONENTS,
MODULES AND SYSTEMS IN THE ELEVATOR INDUSTRY**



safety **in** *motion*™

www.wittur.com

More information
about Wittur Group
available on-line.



SELCON®
a WITTUR brand

Liftmaterial
a WITTUR brand

sematic®
a WITTUR brand