

2000 C-MOD CUBIC

DOORS FOR NEW AND EXISTING RESIDENTIAL
AND OFFICE BUILDINGS



safety **in** motion™

APPLICATIONS		DESTINATION				
		PASSENGERS		GOODS		SPECIAL USES
		DOORS	CARS	DOORS	CARS	DOORS CARS
HOMELIFT		2000 C-MOD CUBIC	ADAPTA VARIO			
RESIDENTIAL		2000 C-MOD CUBIC	ADAPTA		CARGO	CUSTOM
OFFICES		2000 C-MOD CUBIC	ADAPTA		CARGO	CUSTOM PANOR./ CUSTOM
HIGH RISE			VARIO		CARGO	CARGO
HOSPITALS			VARIO		ADAPTA	ADAPTA
TRANSPORT			ADAPTA		CARGO	CUSTOM
MODERNIZATION		2000 C-MOD CUBIC	EASY ADAPTA		CARGO	CARGO
HOTELS			VARIO		ADAPTA	PANORAMIC CUSTOM
SHOPPING CENTERS			ADAPTA		ADAPTA	CARGO PANOR./ CUSTOM
INDUSTRIAL					CARGO	CUSTOM CARGO



The perfect door for new and existing passenger lifts

Sematic 2000 C-MOD CUBIC is the ideal solution for passenger lifts installed in residential and office buildings; a compact and flexible solution suitable for both modernization projects and new installations.

This product line is designed, produced and tested to satisfy international technical and qualitative standards (including the new EN 81-20 and EN 81-50 as option), with special care to safety, reliability and cost efficiency. These doors come with boxed frame and feature a wide range of options

including self-supporting panels, belt-driven expansion skate, aluminum sill and closing system with springs.

The door drive is equipped with Sematic SZS door controller as standard configuration; it can be upgraded to SDS for higher performances and control.

Sematic 2000 C-MOD CUBIC has a minimum 185 mm bottom track package, making it a small and compact solution, without giving up the robustness and quality that are typical of our products.

PRODUCT RANGE

Model	TB min-max (mm)	TH min-max (mm)
K-S 2R/L	700 - 900	2000 - 2100
K-S 4Z	700 - 900	2000 - 2100

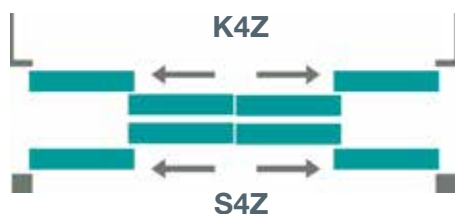
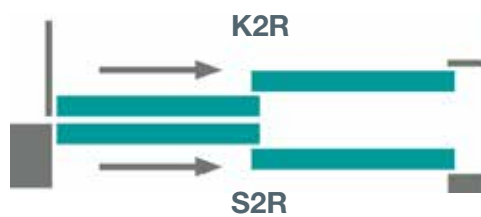
For further information see our technical catalogues

BOTTOM TRACK PACK OVERALL DIMENSION (mm)

Opening	K (car)	S (landing)	Pack ⁽¹⁾
2R/L	67	90	185
4Z	67	90	185

⁽¹⁾ with 28 mm sill to sill distance

DOOR OPENING TYPE



FIRE RATED EXECUTIONS - EN 81-58

Model

S 2R/L	EN 81-58 E 120
S 4Z	EN 81-58 E 120

CABINS SUGGESTED FOR THIS DOOR

> ADAPTA, VARIO

STANDARD MOTORIZATION

Belt-driven operator with 24 Vdc optical encoder controller motor, SZS© DC-PWM technology with transformer

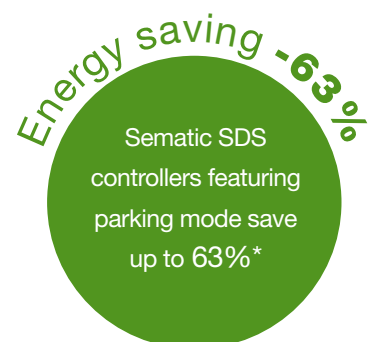
- Power supply voltage: 90-290 Vac, 50-60 Hz
- Power rated: 40 Watt (50 VA)
- Emergency power supply with battery
- Operating temperature range: -5°C to +50°C
- Operating humidity range: up to 80%
- On-board obstacle detection (door re-opening) feature
- Separately adjustable opening and closing speed
- Integrated self-learning cycle and automated speed profiles setting

DOOR AND FRAME FINISHES	STANDARD	OPTIONS
Pre-painted steel (RAL 7032)	✓	✗
Some specific RAL colours	✓	✗
Stainless steel solid construction	✗	✓
BOTTOM TRACK	STANDARD	OPTIONS
Aluminum	✓	✗

SEMATIC FOR ENERGY SAVING

At Sematic, we take our energy use seriously.
We have developed a set of technological devices that allow our elevator components to use as little energy as possible, such as our **Sematic SDS door controller**.

* Door power consumption difference between normal standby mode and parking mode measured in laboratory





MAIN FEATURES	STANDARD			OPTIONS
Certified locking device	EN81-20/50			x
Emergency lock release	In the panel			x
Door closing	Spring			x
Lower Brackets	Tolerance 0/+15 mm			x
Header	Galvanized			x
Frame	BOX FRAME (mm)			NAKED
	W	D	H	
	100	60	100	
Sill	ALU (90 mm)			Additional sill profile
Minimum inter-floor distance	TH+500 mm ⁽¹⁾			TH+400 (reduced brackets) TH+530 (installation in niche)
Apron	H=255 mm			x
Noise level	55dB(A)			x
Protection	IP 20			x
Lock release key	x			✓
Packaging	Cardboard box			x

W = Width
D = Depth
H = Header

⁽¹⁾ See technical catalogue for further details.

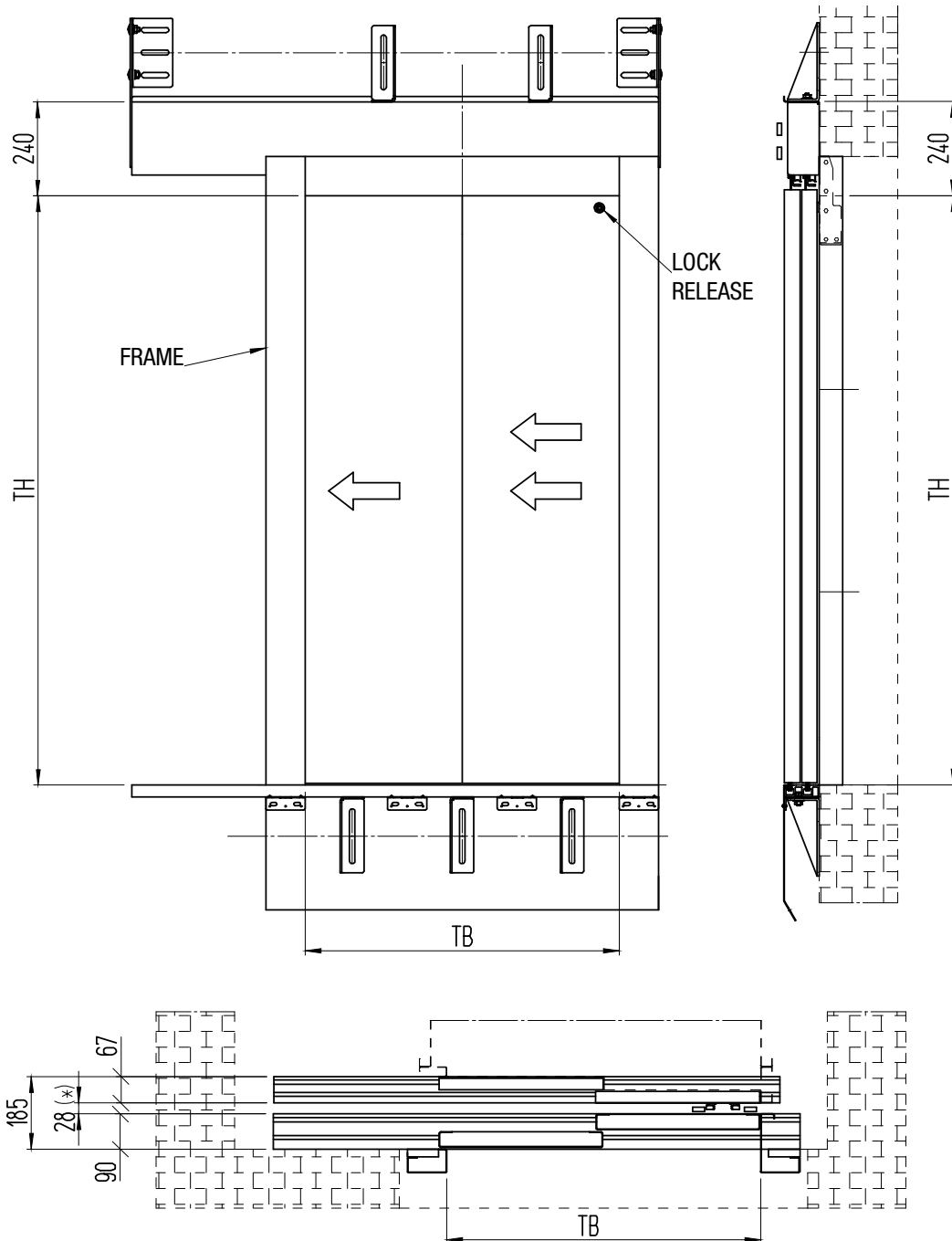
EN-81
20/504Z execution
shown in the picture

MAIN FEATURES	STANDARD	OPTIONS
Expansion skate	✓	✗
Door controller	SZS (see pag. 5)	SDS
Motorization	DC-PWM Standard	
Car door locking device	✓	✗
Noise level	55dB(A)	✗
Door panels	Pre-painted steel (RAL 7032)	Stainless steel solid construction
Sill	ALU	✗
Apron	✗	H=750 mm
Protection	IP 20	✗
Packaging	Cardboard box	✗

MAIN APPLICATION CONTEXT CHARACTERISTICS

Elevator speed [m/sec]	< 1,75
Life cycle	3,5 millions
Max number of stops	21
Max starts of car door per year	250.000
Max starts of landing door per year	150.000
Useful life	20 years
Sill load	max. 400 kg

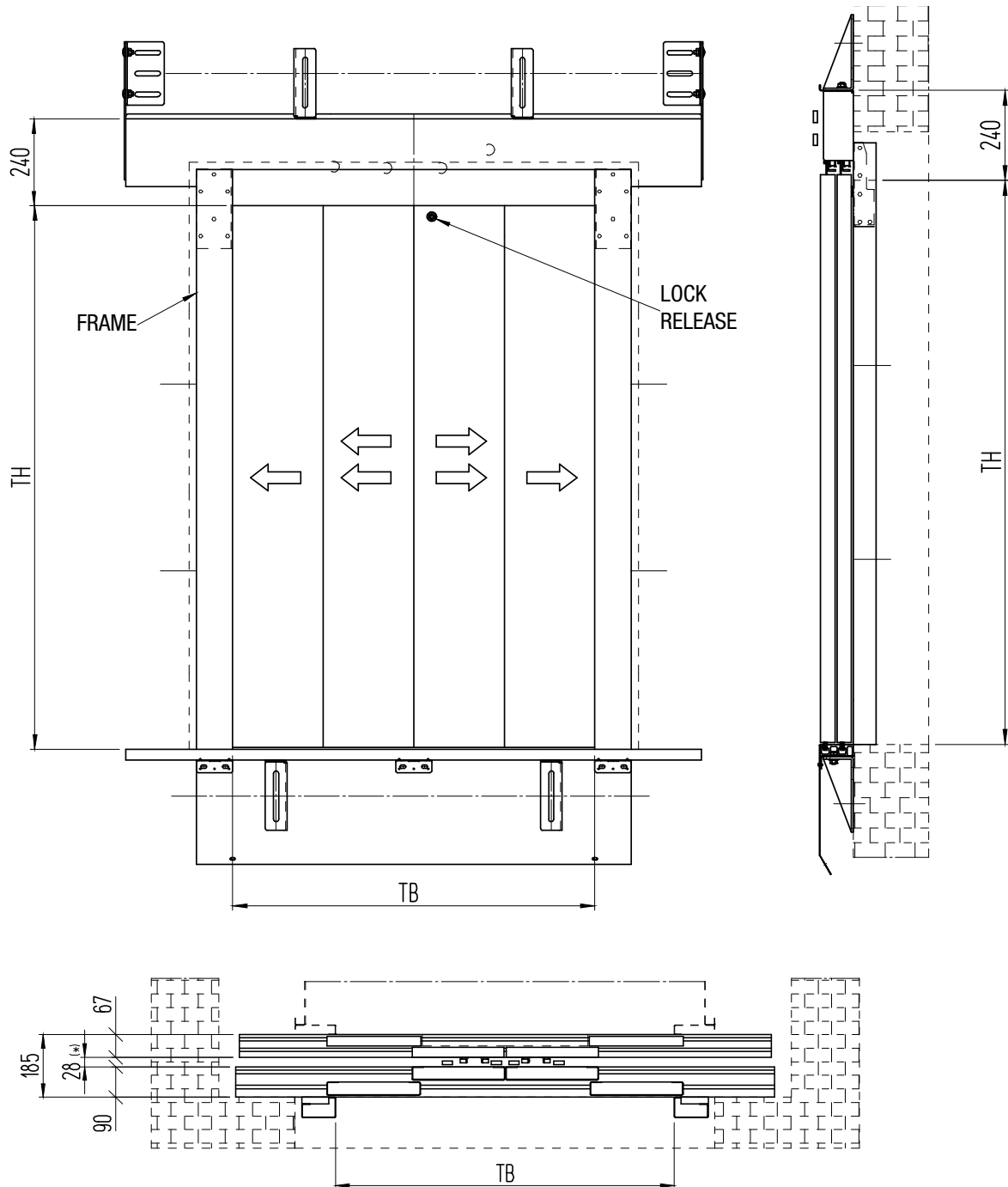
2L LAYOUT: FRONT, SIDE AND PLAN VIEWS



NOTES

- 2L as drawing, 2R mirrored
- Sill to sill distance min. 28 – max 32 mm
- For further information see our technical catalogues

4Z LAYOUT: FRONT, SIDE AND PLAN VIEWS



NOTES

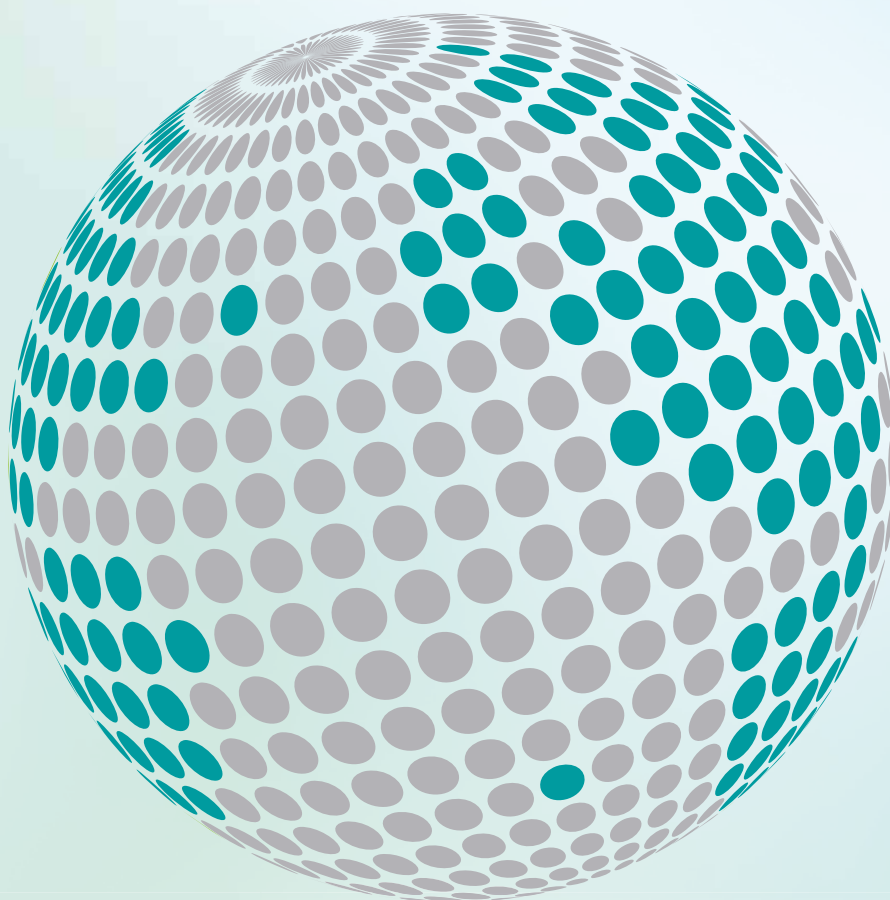
- Sill to sill distance min. 28 – max 32 mm
- For further information see our technical catalogues







**YOUR GLOBAL PARTNER FOR COMPONENTS,
MODULES AND SYSTEMS IN THE ELEVATOR INDUSTRY**



safety **in** *motion*™

www.wittur.com

More information
about Wittur Group
available on-line.



SELCON®
a WITTUR brand

Liftmaterial
a WITTUR brand

sematic®
a WITTUR brand