

# 2000 B-G

DOORS FOR FREIGHT ELEVATORS



safety **in** motion™

APPLICATIONS		DESTINATIONS					
		PASSENGERS		GOODS		SPECIAL USES	
		DOORS	CARS	DOORS	CARS	DOORS	CARS
HOMELIFT			ADAPTA VARIO				
RESIDENTIAL			ADAPTA	2000 B-G	CARGO		CUSTOM
OFFICES			ADAPTA	2000 B-G	CARGO		CUSTOM PANOR./ CUSTOM
HIGH RISE			VARIO	2000 B-G	CARGO		CARGO
HOSPITALS			VARIO	2000 B-G	ADAPTA	2000 B-G	ADAPTA
TRANSPORT			ADAPTA	2000 B-G	CARGO		CUSTOM
MODERNIZATION			EASY ADAPTA	2000 B-G	CARGO		CARGO
HOTELS			VARIO	2000 B-G	ADAPTA		PANORAMIC CUSTOM
SHOPPING CENTERS			ADAPTA	2000 B-G	ADAPTA		CARGO PANOR./ CUSTOM
INDUSTRIAL				2000 B-G	CARGO		CUSTOM CARGO



## Providing flexible solutions to satisfy the needs of goods transportation in every industry

A door for freight elevator needs to be not only robust, but it has also to guarantee safety and reliability in all operative conditions, even in the extreme ones.

Sematic 2000 B-G satisfies these requirements thanks to a set of constructive solutions specially designed for this application such as reinforced expansion skate, frame and panels, increased rollers and steel upper tracks. 2000 B-G features door posts partially on the floor assuring easy and

stable installation.

It's available in a wide range of fire rated certifications, anti-vandal executions, with glass panels and many more. 2000 B-G is the ideal solution for elevators in airports, undergrounds, railway stations, shopping centers, hospitals, industrial buildings, multi-floor parking and in all those applications where the doors can be potentially hit.

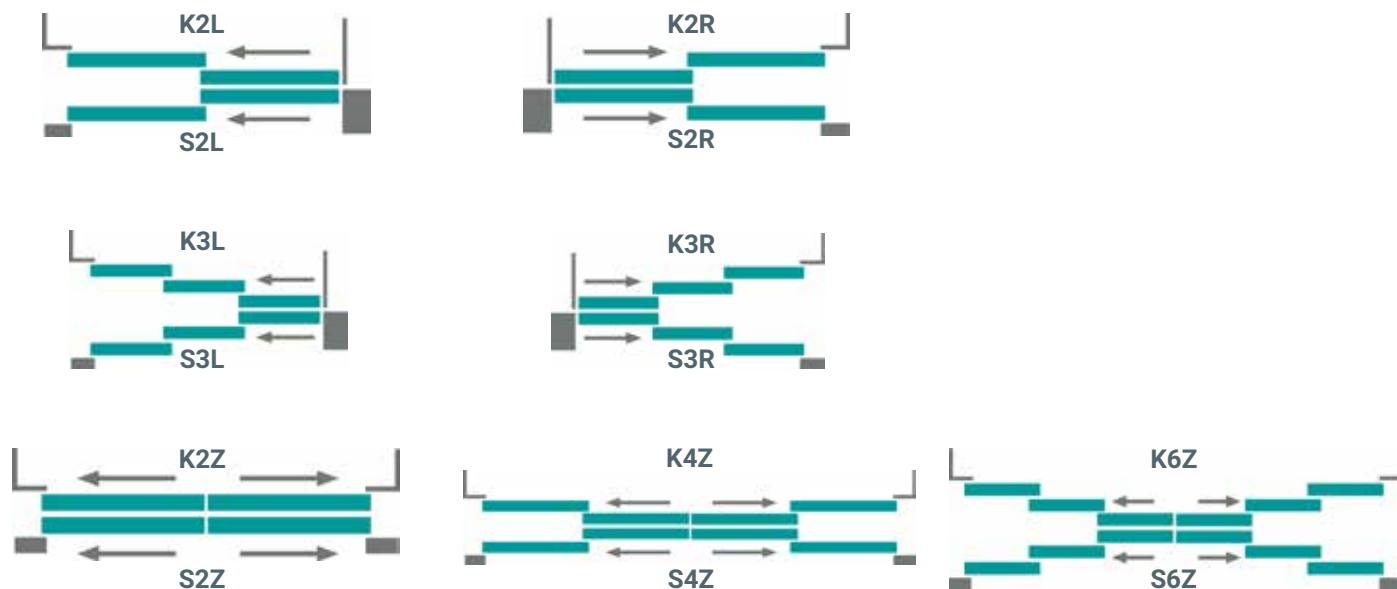
PRODUCT RANGE		
Model	TB min-max (mm)	TH min-max (mm)
K-S 2R/L	1000 - 2000	2000 - 3500
K-S 3R/L	1000 - 2000	2000 - 3500
K-S 2Z	1000 - 2000	2000 - 3500
K-S 4Z	1000 - 3500	2000 - 3500
K-S 6Z	1400 - 3500	2000 - 3500

For further information see our technical catalogues

BOTTOM TRACK PACK OVERALL DIMENSION (mm)			
Opening	K (car)	S (landing)	Pack <sup>(1)</sup>
2R/L	90	135	255
3R/L	135	180	345
2Z	45	90	165
4Z	90	135	255
6Z	135	180	345

<sup>(1)</sup> 30mm sill distance

## DOOR OPENING TYPE



## FIRE RATED EXECUTIONS - EN 81-58

Model	Steel doors	Framed glass doors
S 2R/L	E 120 EW 60 EI 60 EI 120	E 120
S 3R/L		
S 2Z		
S 4Z		
S 6Z		

BS 476, GOST and many other certifications available. Call for information.

## CABINS SUGGESTED FOR THIS DOOR

> ADAPTA > CARGO

## STANDARD MOTORIZATION

Belt-driven operator with a 24 Vdc optical encoder controller motor, SDS® DC-PWM technology with an integrated switching transformer

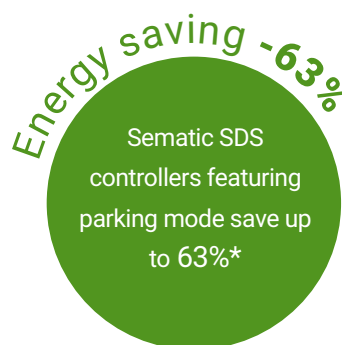
- Power supply voltage: 90-290 Vac (115 V -20%, 230 V + 26%), 50-60 Hz with integrated switching.
- Power rated 200 VA
- Emergency power supply 24/36Vdc
- Operating temperature range -10°C to 60°C
- Operating humidity range: up to 80%
- On-board obstacle detection (door re-opening) feature
- Opening and closing speed adjustable separately
- Self-learning cycle and automated speed profiles setting integrated

DOOR AND FRAME FINISHES	STANDARD	OPTIONS
RAL 7032 powder coating	✓	✗
Other RAL Colours	✗	✓
Framed Glass	✗	✓
Frameless glass	✗	✓
Stainless steel claddings	✗	✓
Skin plate claddings	✗	✓
BOTTOM TRACK	STANDARD	OPTIONS
Aluminum	✓	✗
Steel	✗	✓
Stainless steel	✗	AISI 304 / AISI 316
Brass - Bronze	✗	available for all doors type except 3 R/L and 6Z

## SEMACIC FOR ENERGY SAVING

At Sematic, we take our energy use seriously. We have developed a set of technological devices that allow our elevator components to use as little energy as possible, such as our **Sematic SDS door controller**.

\* Door power consumption difference between normal standby mode and parking mode measured in laboratory





EN81



4Z execution shown in the picture

MAIN FEATURES	STANDARD	OPTIONS
Certified locking device	✓ EN81-1/2 ✓ EN81-20/50	✗
Position of the lock release	Integrated into the header	In the panel or in the frame
Door closing	Spirator	Counterweight
Door panels	Single skin	Double skin
Header height	280 mm	✗
Frame	Boxed 120x90mm door posts	Reduced door posts (min.80x90 mm) Increase door posts (> 120 mm)
Installation	Door posts partially on the floor	✗
Kit man in the pit	In case of EN81-20/50	In case of EN81-1/2
Monostable contact	✗	✓
Impact robust packaging	Cardboard box Wood (ISPM15)	✗

SPECIAL EXECUTION	OPTIONS
Portal execution	✓
Portal execution with glass	✓
Smoke-seal/Air-seal execution	✓
Anti-vandal execution	EN81-71
Hidden bottom track	✓ (no 3 R/L and 6Z)
Australia execution	✓
Marine execution	✓

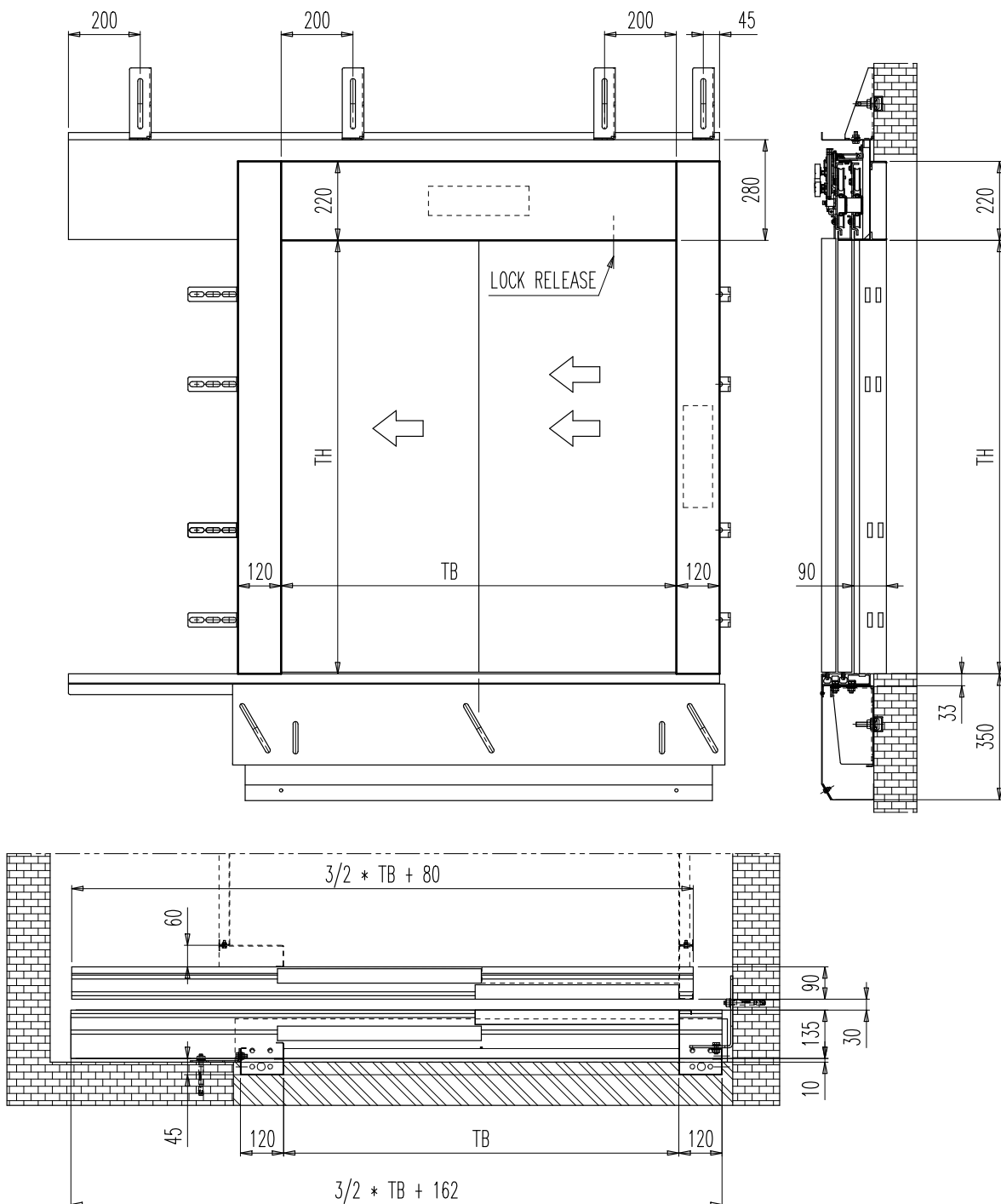


4Z execution  
shown in the picture

MAIN FEATURES	STANDARD	OPTIONS
Car door locking device	EN81-20/50	EN81-1/2
Skate	Expansion	x
Motorization	See pag. 5	Brushless with AC-VVVF technology
Door controller	SDS DC PWM	Other door controllers available. Please contact our sales department.
Door panels	Single skin	Double skin / Vision panel
Detecting system	x	Static / Dynamic
Operator height	445 mm	340 mm for 2RL, 2Z and 4Z 400 mm for 3RL and 6Z
Average car door cycles per year	650.000	x
Impact robust packaging	Cardboard box Wood (ISPM15)	x

SPECIAL EXECUTION	OPTIONS
Anti-vandal execution	EN81-71
Hidden bottom track	✓ (no 3 R/L and 6Z)
Marine execution	✓

## 2L LAYOUT: FRONT, SIDE VIEWS AND COUPLING

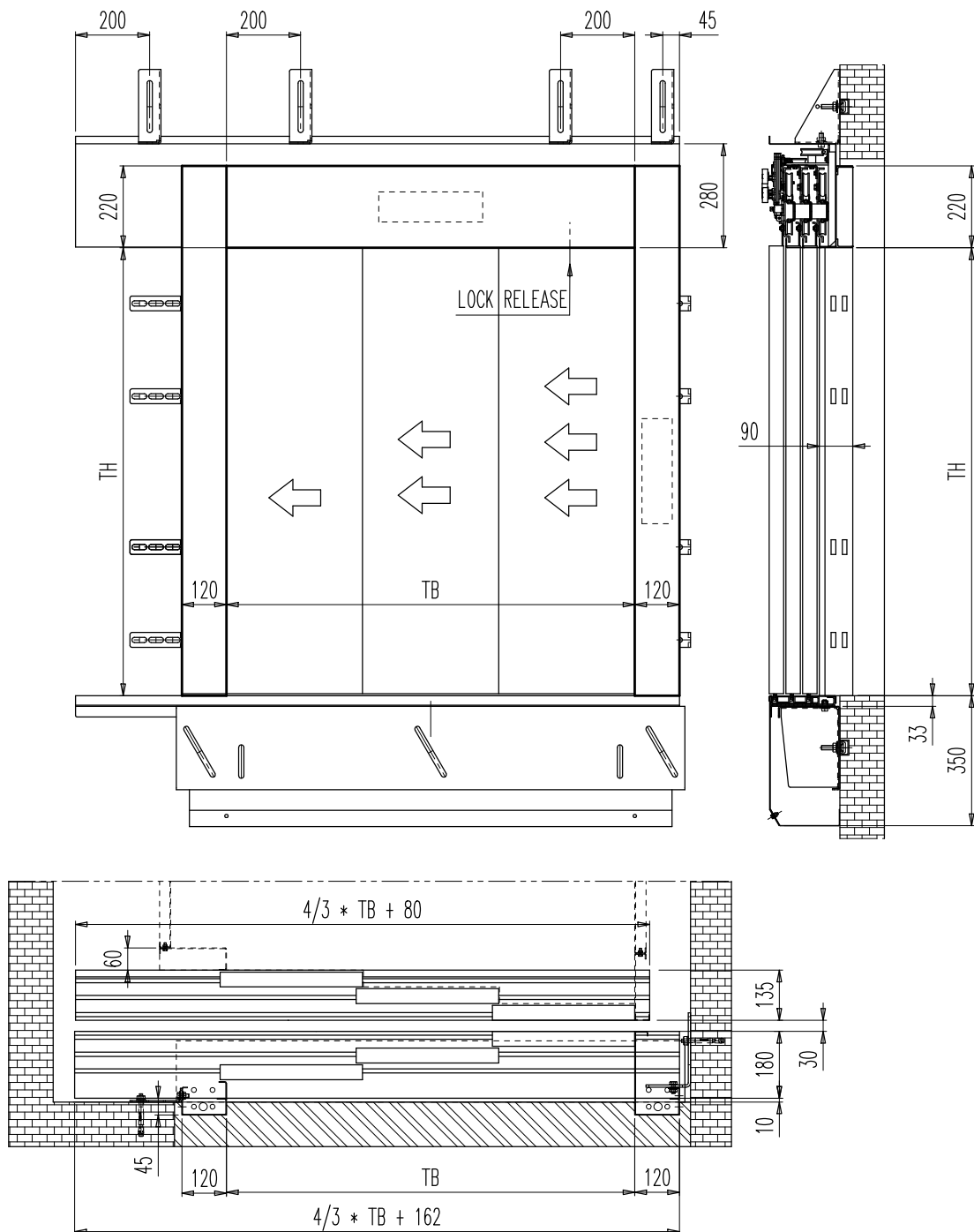


## NOTES

- 2L as drawing, 2R mirrored
- Setting distance: 0-20 mm: default 10 mm
- For further information see our technical catalogues



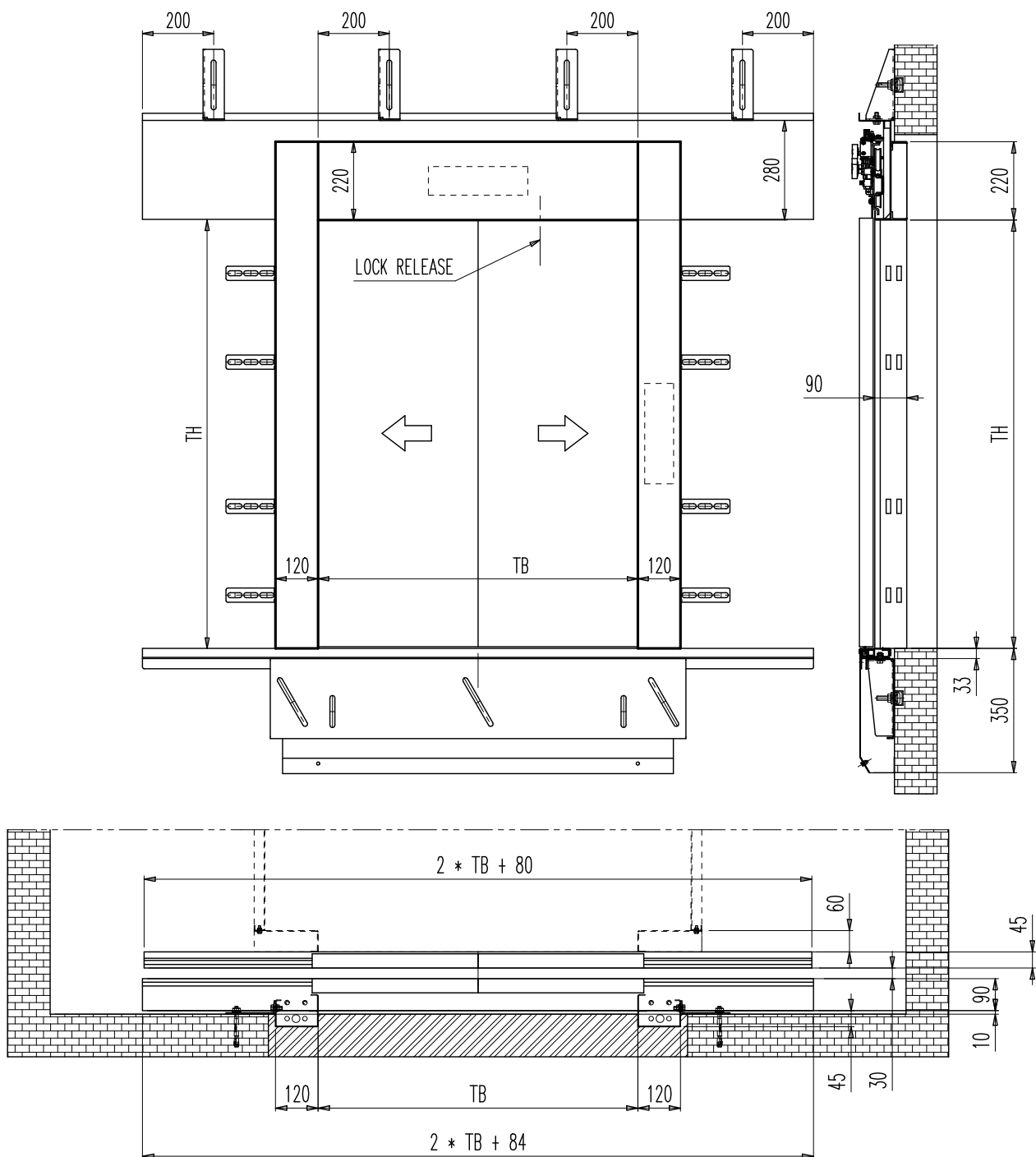
## 3L LAYOUT: FRONT, SIDE VIEWS AND COUPLING



## NOTES

- 3L as drawing, 3R mirrored
- Setting distance: 0-20 mm; default 10 mm
- For further information see our technical catalogues

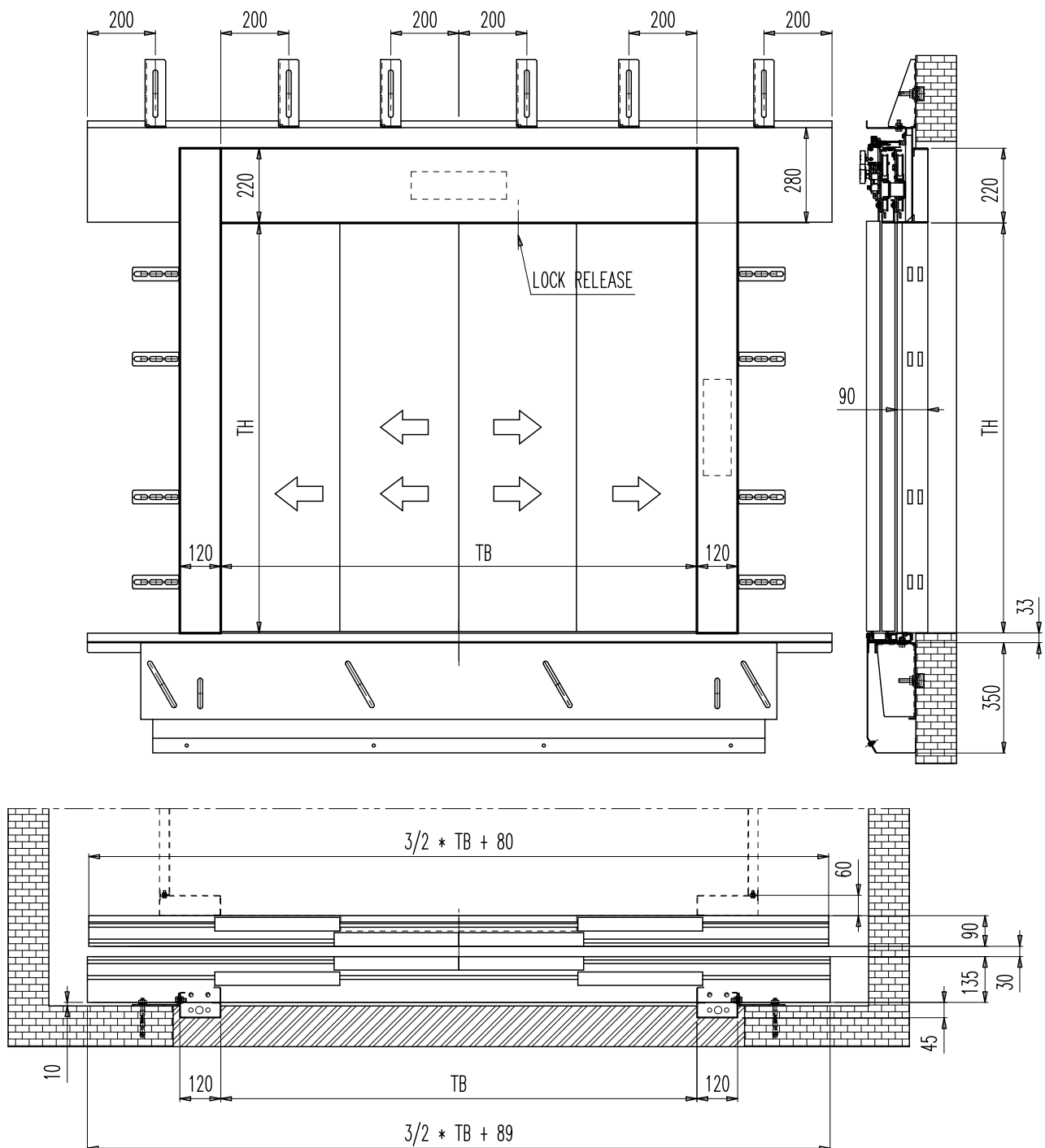
## 2Z LAYOUT: FRONT, SIDE VIEWS AND COUPLING



## NOTES

- Setting distance: 0-20 mm; default 10 mm
- For further information see our technical catalogues

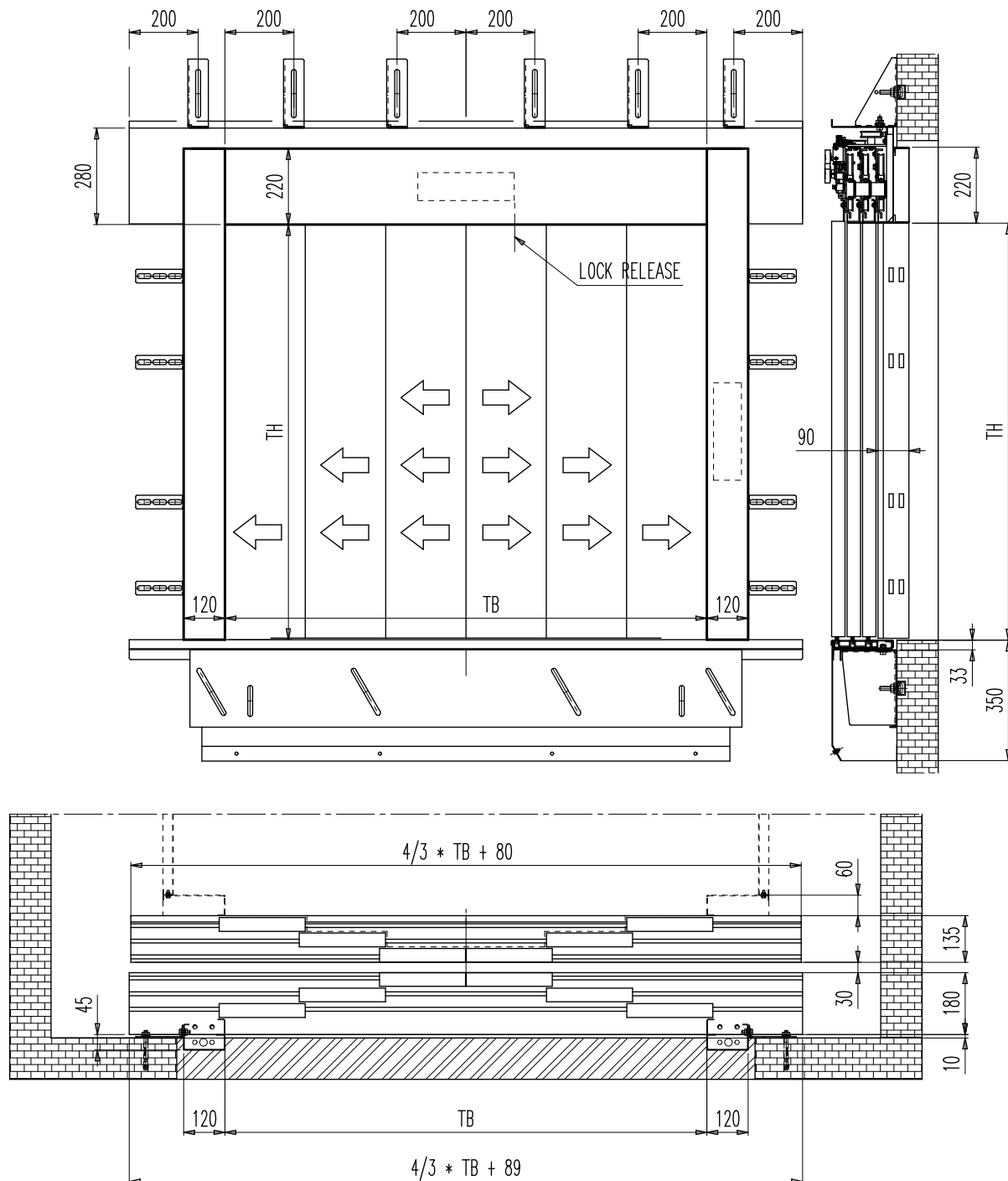
## 4Z LAYOUT: FRONT, SIDE VIEWS AND COUPLING



## NOTES

- Setting distance: 0-20 mm; default 10 mm
- For further information see our technical catalogues

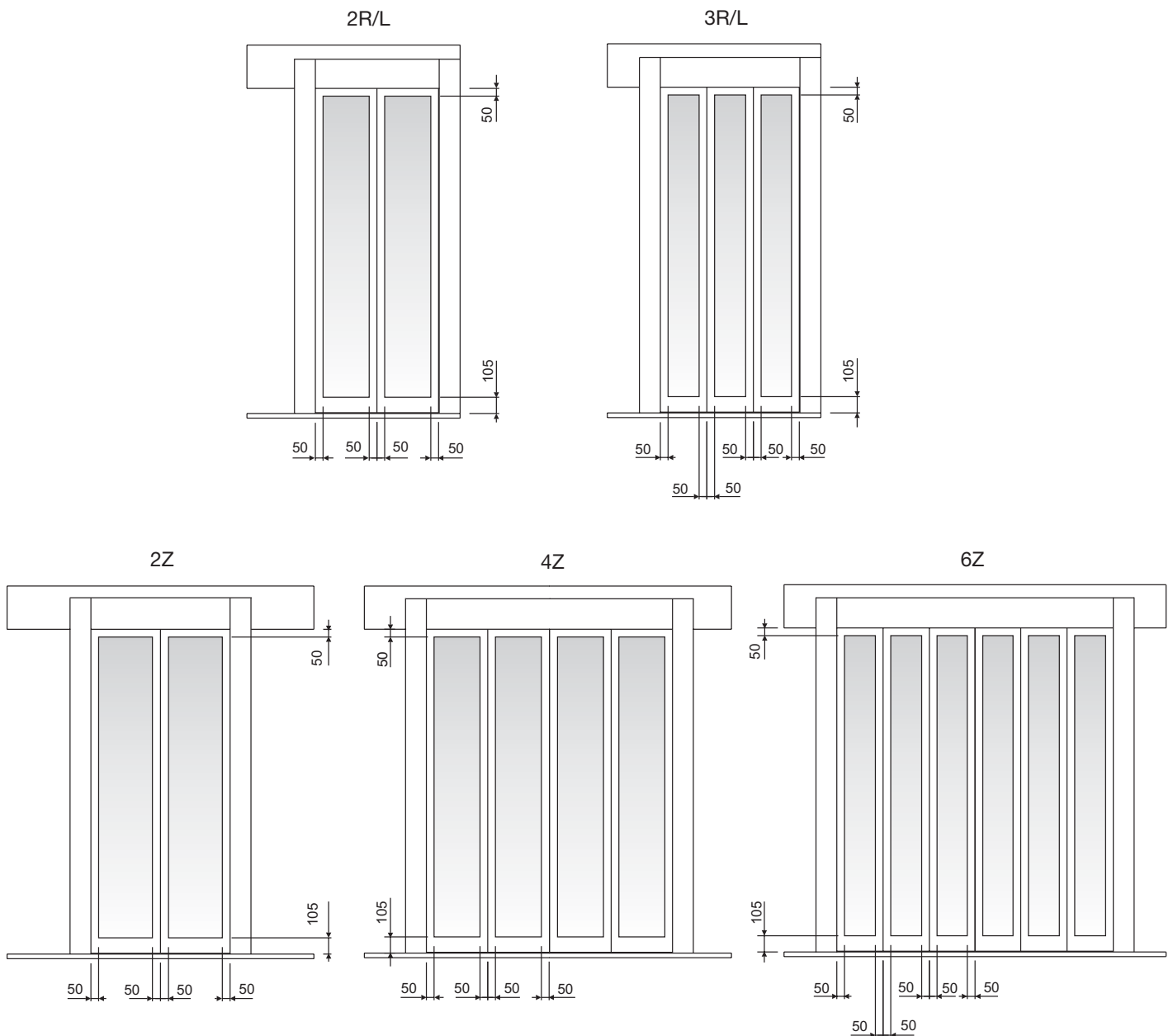
## 6Z LAYOUT: FRONT, SIDE VIEWS AND COUPLING



## NOTES

- Setting distance: 0-20 mm; default 10 mm
- For further information see our technical catalogues

## STANDARD DIMENSIONS FOR FRAMED GLASS PANELS



## NOTES

- EN 81-58 and BS476 glass panels available too.
- For further information see our technical catalogues

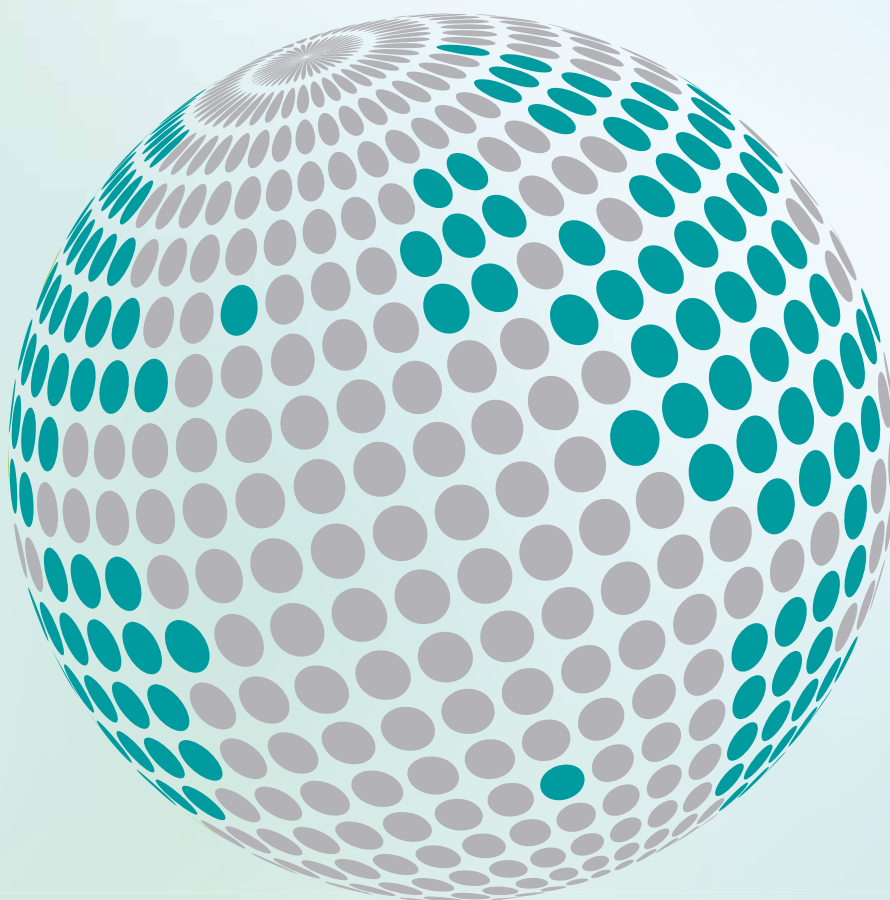








**YOUR GLOBAL PARTNER FOR COMPONENTS,  
MODULES AND SYSTEMS IN THE ELEVATOR INDUSTRY**



*safety* **in** *motion*™

[www.wittur.com](http://www.wittur.com)

More information  
about Wittur Group  
available on-line.



**SELCON®**  
a WITTUR brand

**Liftmaterial**  
a WITTUR brand

**sematic®**  
a WITTUR brand