

CSGB

UNIDIRECTIONAL PROGRESSIVE SAFETY GEAR



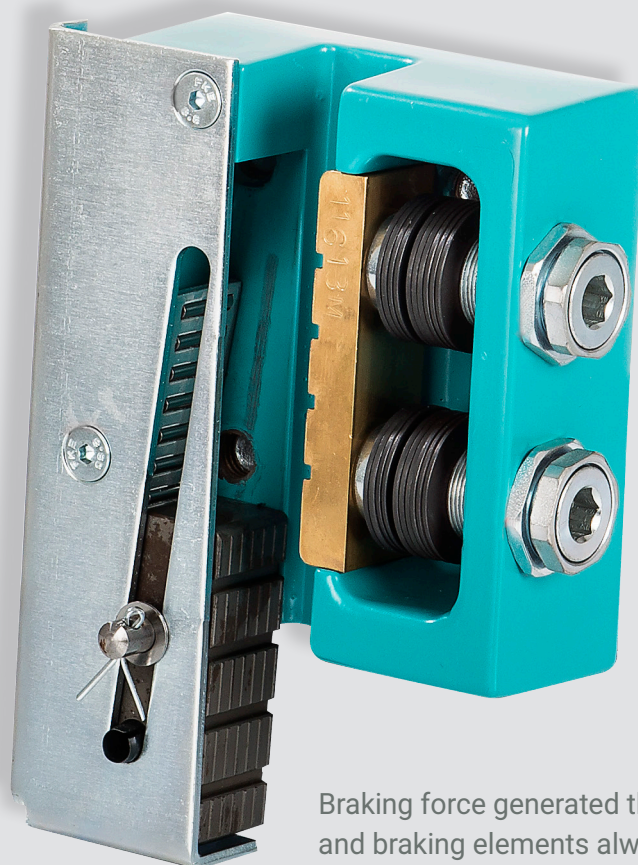
Residential



Office



Modernization



Braking force generated through a combination of disc springs and braking elements always in pairs and activated by a movable tripping wedge.

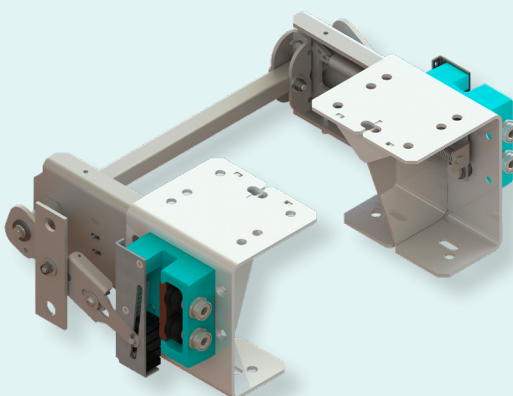
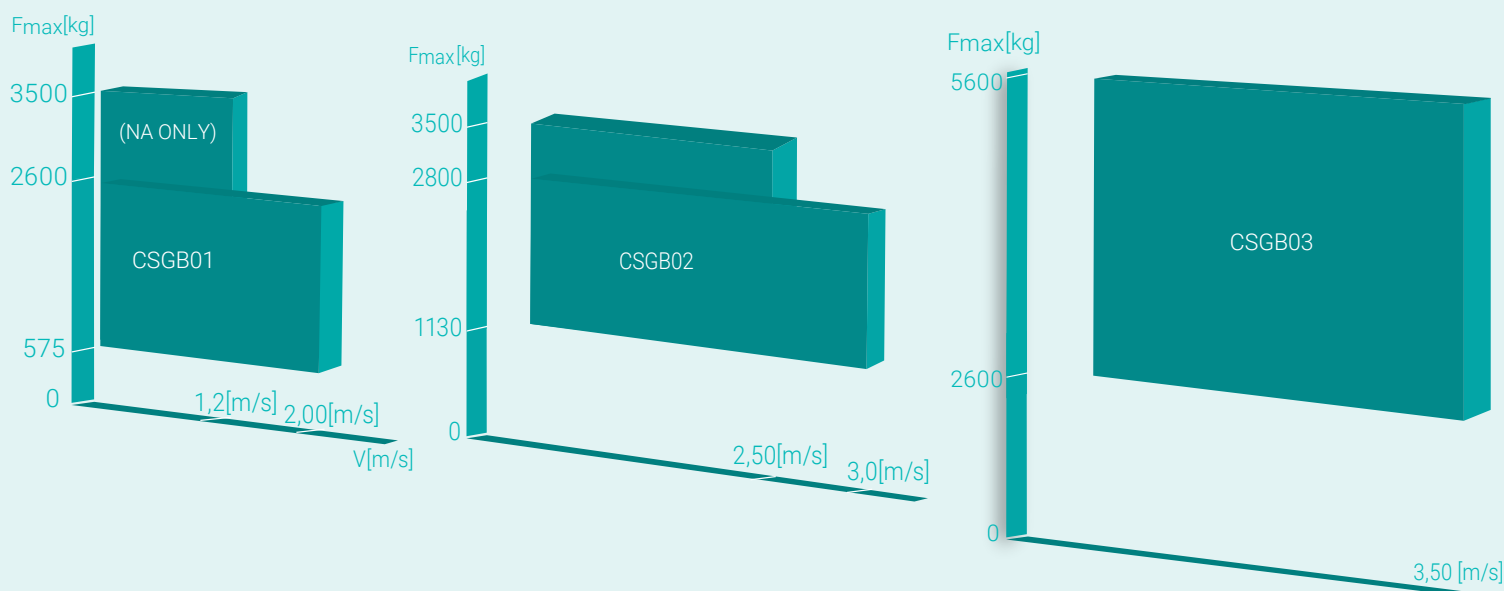
Simple and compact design for easy installation in different positions on car slings or counterweight frames.



CSGB-01/02/03 UNIDIRECTIONAL PROGRESSIVE SAFETY GEAR

CHOICE CRITERIA

- Unidirectional progressive safety gear
- Compact design and versatile integration - can be installed either in a separate housing or attached to the upright beam of the car sling / counterweight frame
- Various synchronization and housing options available
- Low release force from tripping position (reliable and smooth-running reset)
- Sufficient running clearance in order to avoid unintended gripping
- Maintenance-free operation
- Complete traceability of the production of main components from raw material to final product with coding system stamped to the parts to enhance safety standard
Can be applied to all kinds of guide rails (9/10/15,88/16mm) and conditions (oiled, dry, machined, drawn)
- Very high safety factor and reliability which even exceeds EN 81-20 standards
- Compliant with EN 81-20/50:2020, UKCA lifts regulation 2016, GOST 33984.1/.2, ASME A17.1 (CA, WI, PA approvals) and GB/T7588.1/.2 requirements.



CSGB on
wittur.com