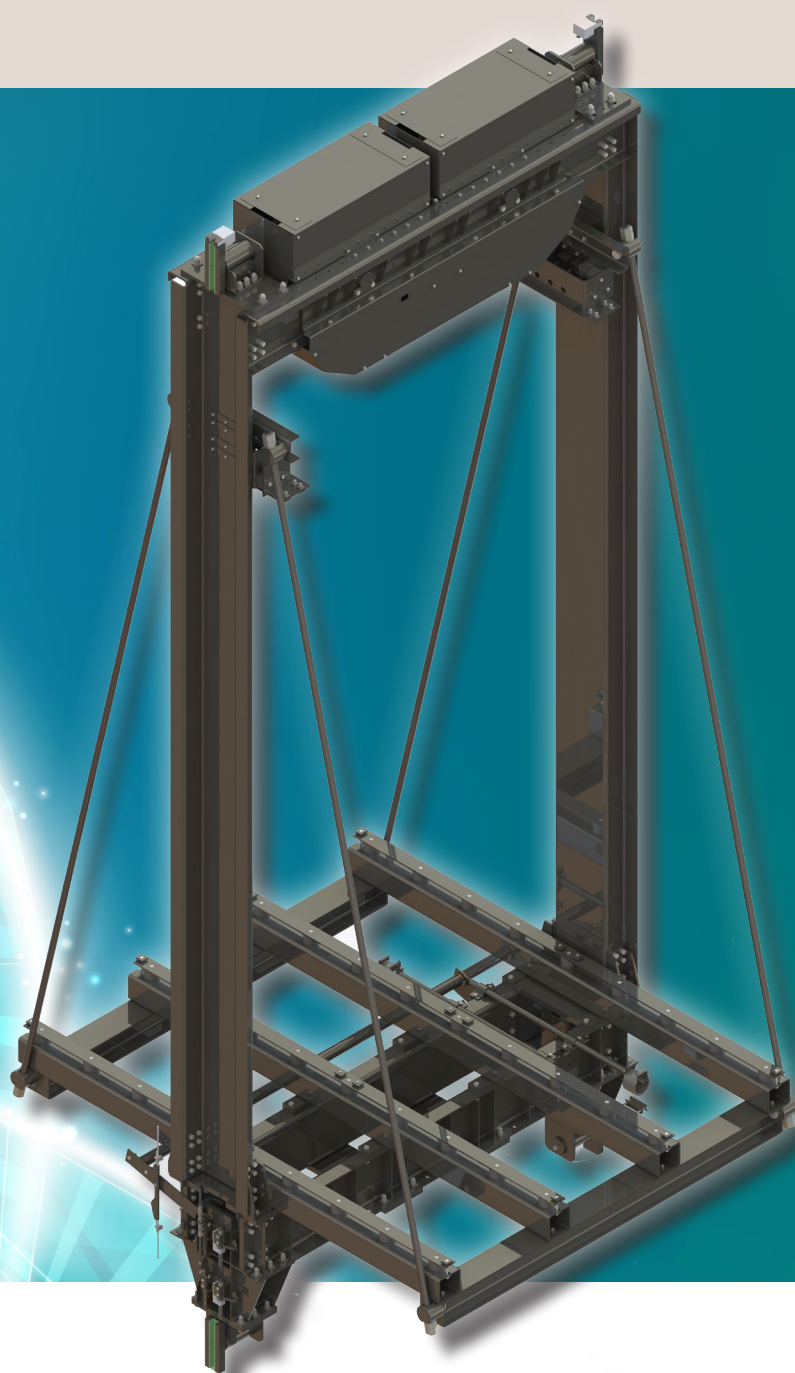


WCS60

CAR FRAME SERIES



ROPE CAR SLING WCS60

The car frame WCS60 is used for low speed elevators and total loads (P+Q) up to 17.000 kg.

FEATURES

- Meets the EN 81-20 specification, even other safety codes if required
- Car frame width (DBG) as well as frame height can be chosen freely (in mm steps) within the technical limits
- Progressive safety gear SGB03 Duplex
- Roller type safety gear SGA-I70
- Recommended guide rail width 32 mm
- Suspension 2:1 or 4:1 (Pulley above car)
- Isolated car fixings for roof and floor

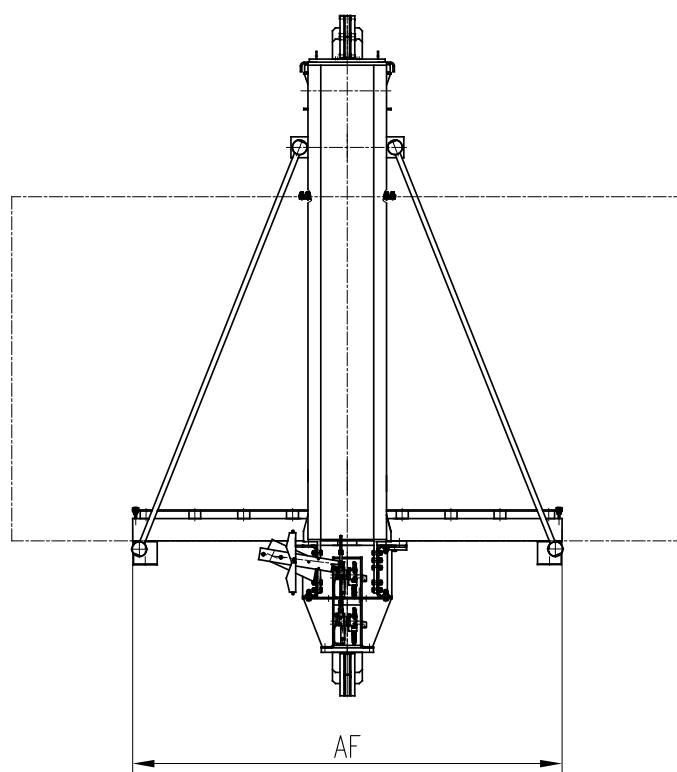
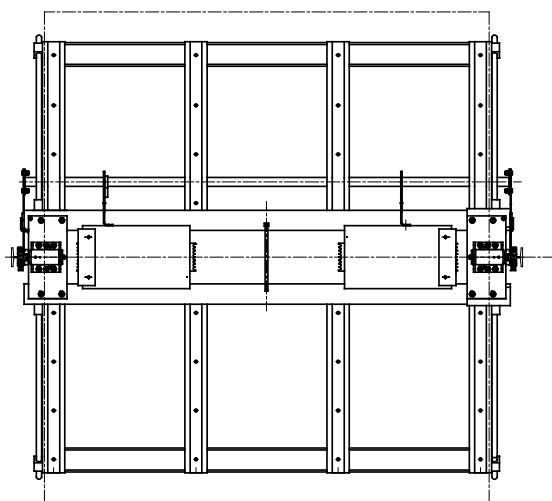
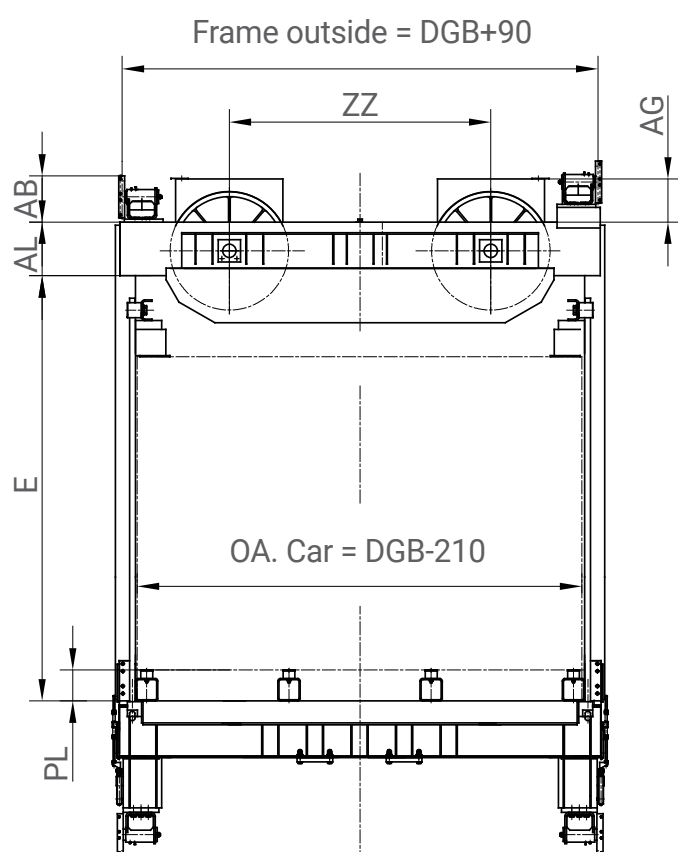
CONTENT OF SUPPLY

- Plank constructed with steel channels complete with safety gear and synchronisation
- Crosshead constructed with steel channels complete assembled
- Car floor support beams and car roof fixings
- Sliding guide shoes SLG4 incl. guide lubricator
- Load weighing device WLWD-M (optional)
- Travelling cable hanger, compensation chain hanger (optional)

This brochure does not serve project planning purposes.

Therefore, please refer to our technical catalogue.

ROPE CAR SLING WCS60





WITTUR

YOUR GLOBAL PARTNER FOR COMPONENTS,
MODULES AND SYSTEMS IN THE ELEVATOR INDUSTRY



WITTUR.COM



ADVANCING THE ELEVATOR INDUSTRY®

WCS000 - 05.3.002337 - English - December 2022

Subject to change without notice!