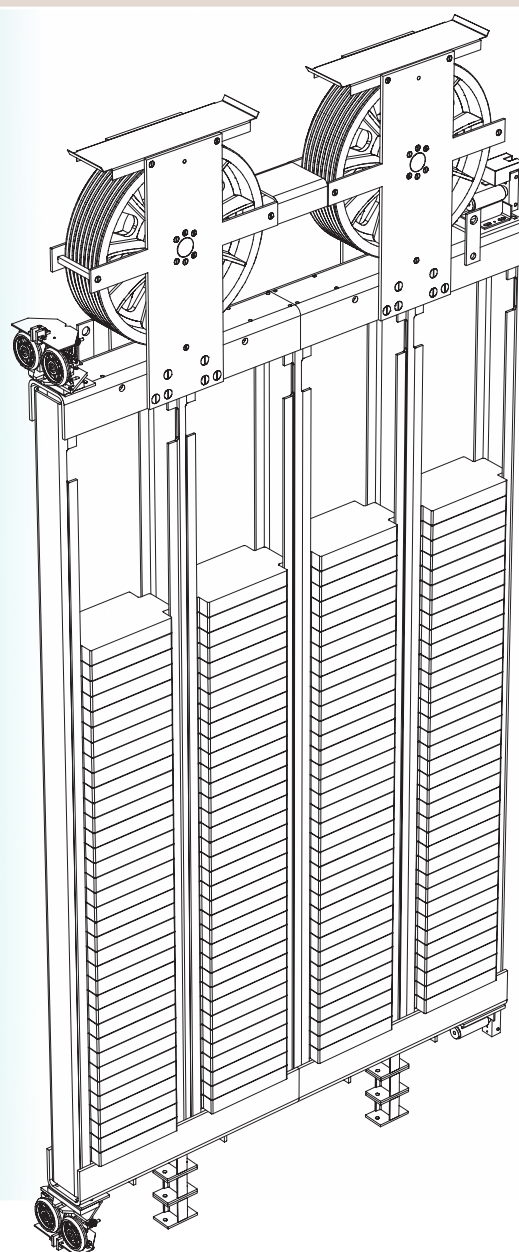


# WCW 16 - 25 - 35 - 60

COUNTERWEIGHT FRAME SERIES



## WCW 16 - 25 - 35 - 60

The WCW series counterweight frames are perfectly useable for any elevator concept due to its modular assembly and its huge amount of options.

TYPE	WCW16	WCW25	WCW35	WCW60
Suspension	1:1 2:1	1:1 2:1	2:1	2:1
Max. rated speed v (m/s)	10	10	7	7
Max. suspended load G (kg)	4.400	8.400	9.800	14.000

## FEATURES

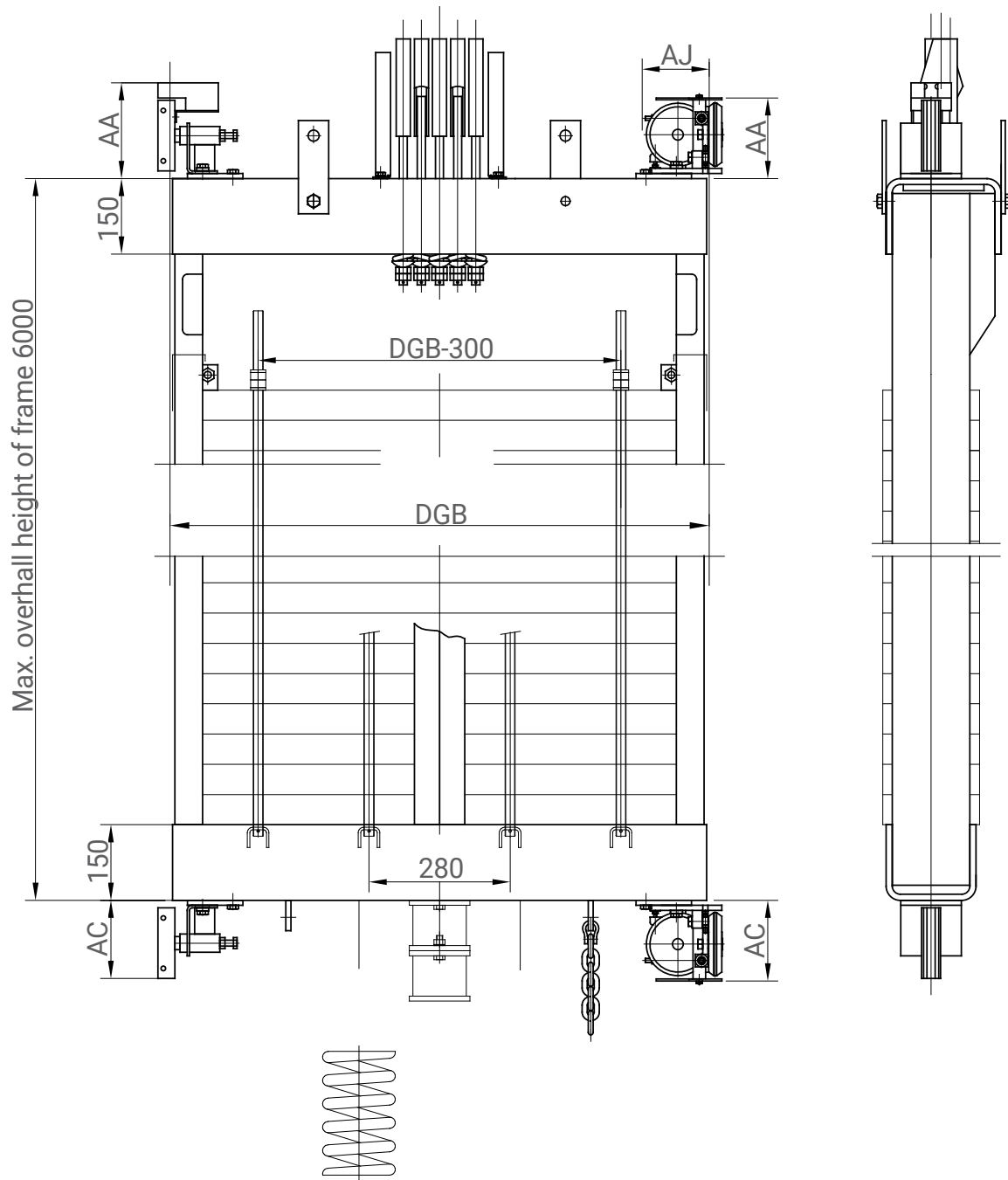
- Meets the EN 81-20 specification
- WCWF-width (DBG; except WCW35, WCW60) as well as WCWF-height can be chosen freely (in mm steps), within the technical limits
- Suitable for rail head width from 5 to 19 mm, acc. to standard dimension of guide rail width
- Suspension 1:1 up to 4:1
- Usage possible with counterweight safety gear (optional)
- Easy installation
- Small shipping dimensions

## CONTENT OF SUPPLY

- Crosshead channel complete with rope anchor or rope pulley
- Roller guides or sliding guide shoes incl. Guide lubricator
- Buffer spacers (optional)
- Compensation chain hanger (optional)

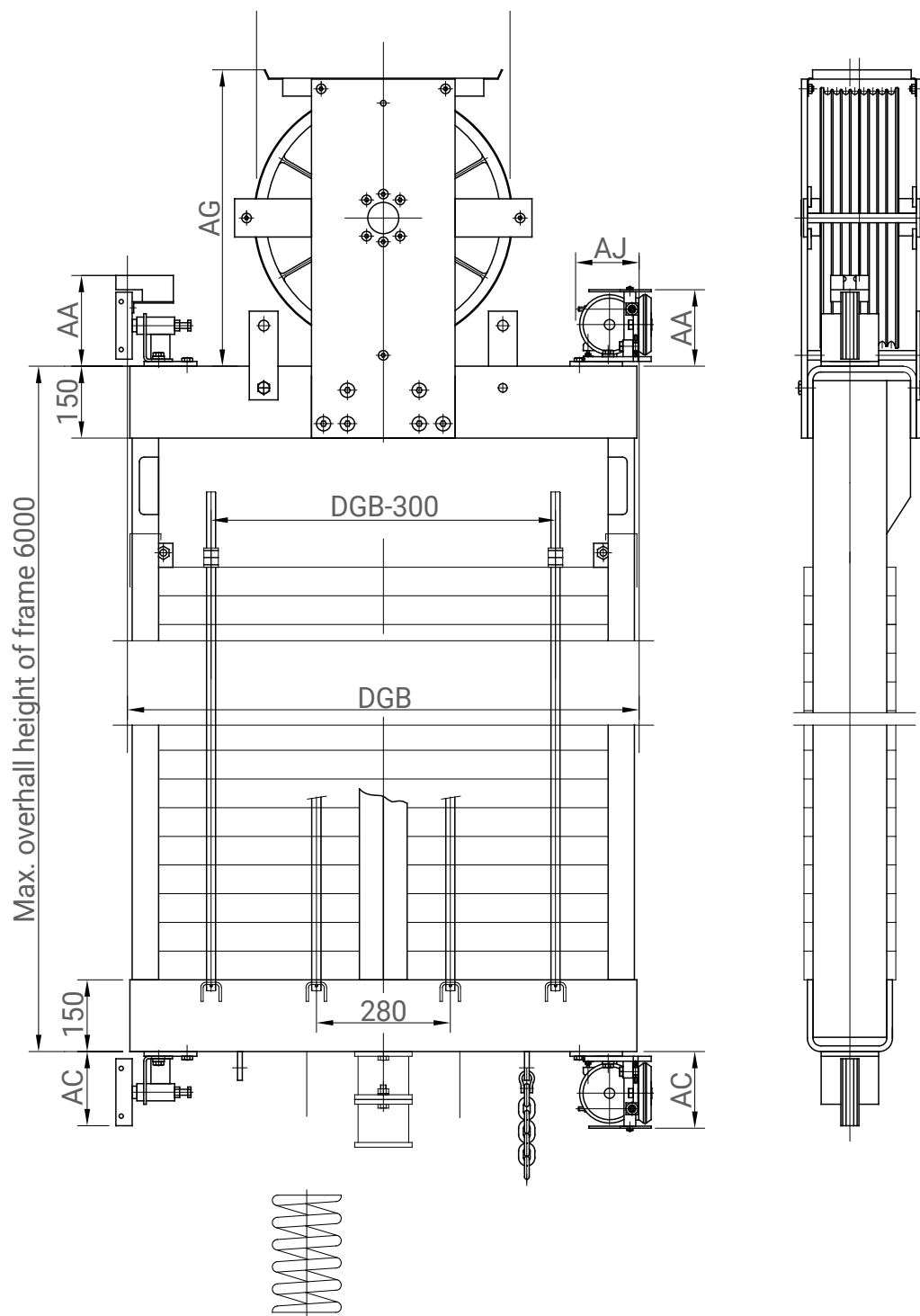
This brochure does not serve project planning purposes.  
Therefore, please refer to our technical catalogue.

# WCW 16, WCW 25, SUSPENSION 1:1

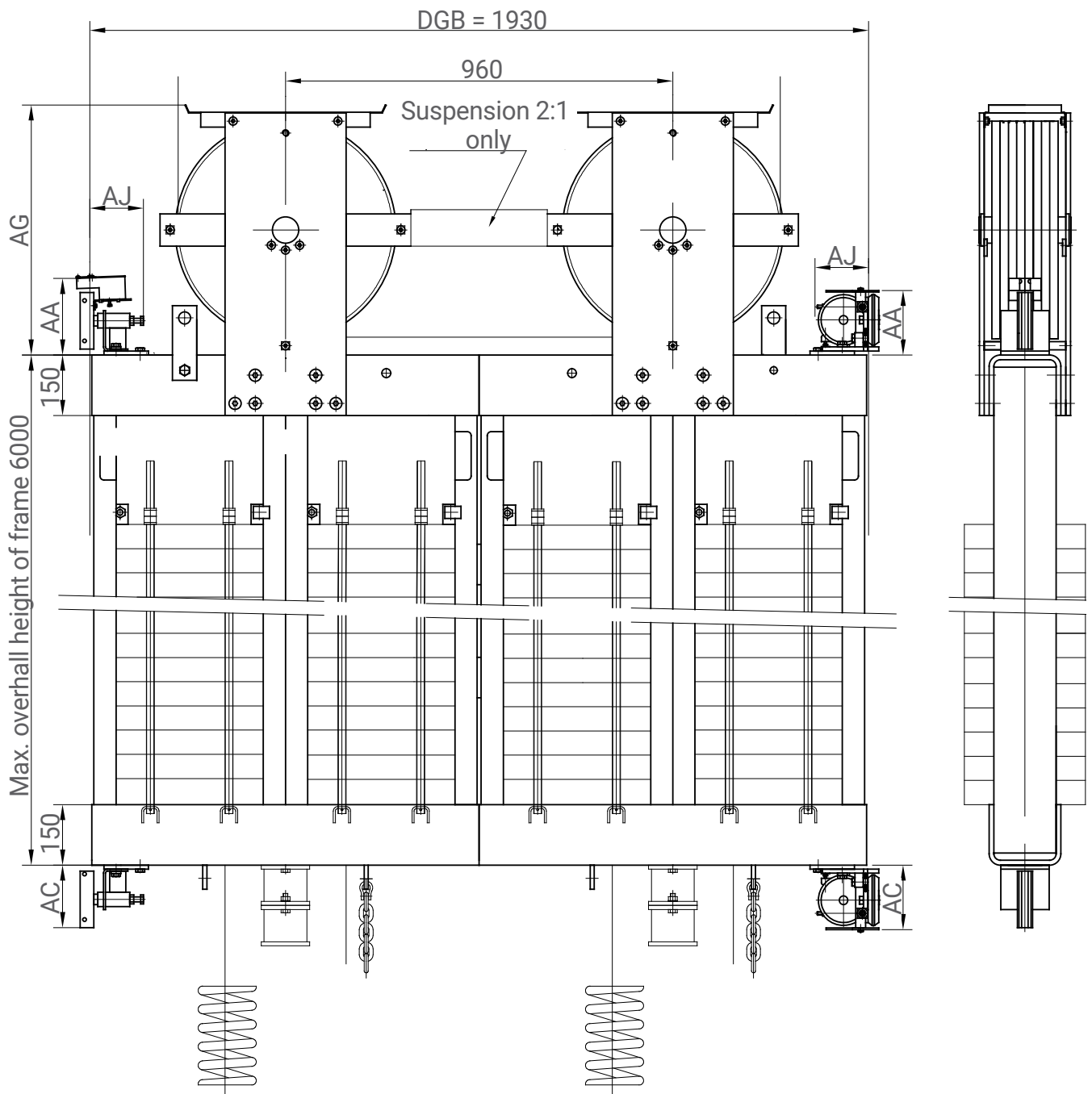


## COUNTERWEIGHT FRAME SERIES

# WCW 16, WCW 25, SUSPENSION 2:1



# WCW 35, WCW 60





WITTUR

**YOUR GLOBAL PARTNER** FOR COMPONENTS,  
MODULES AND SYSTEMS IN THE ELEVATOR INDUSTRY



WITTUR.COM



**ADVANCING** THE ELEVATOR INDUSTRY®

WITTUR 10-2015-5-60 - SB 5.000571 - English - Dezember 2022

Subject to change without notice!