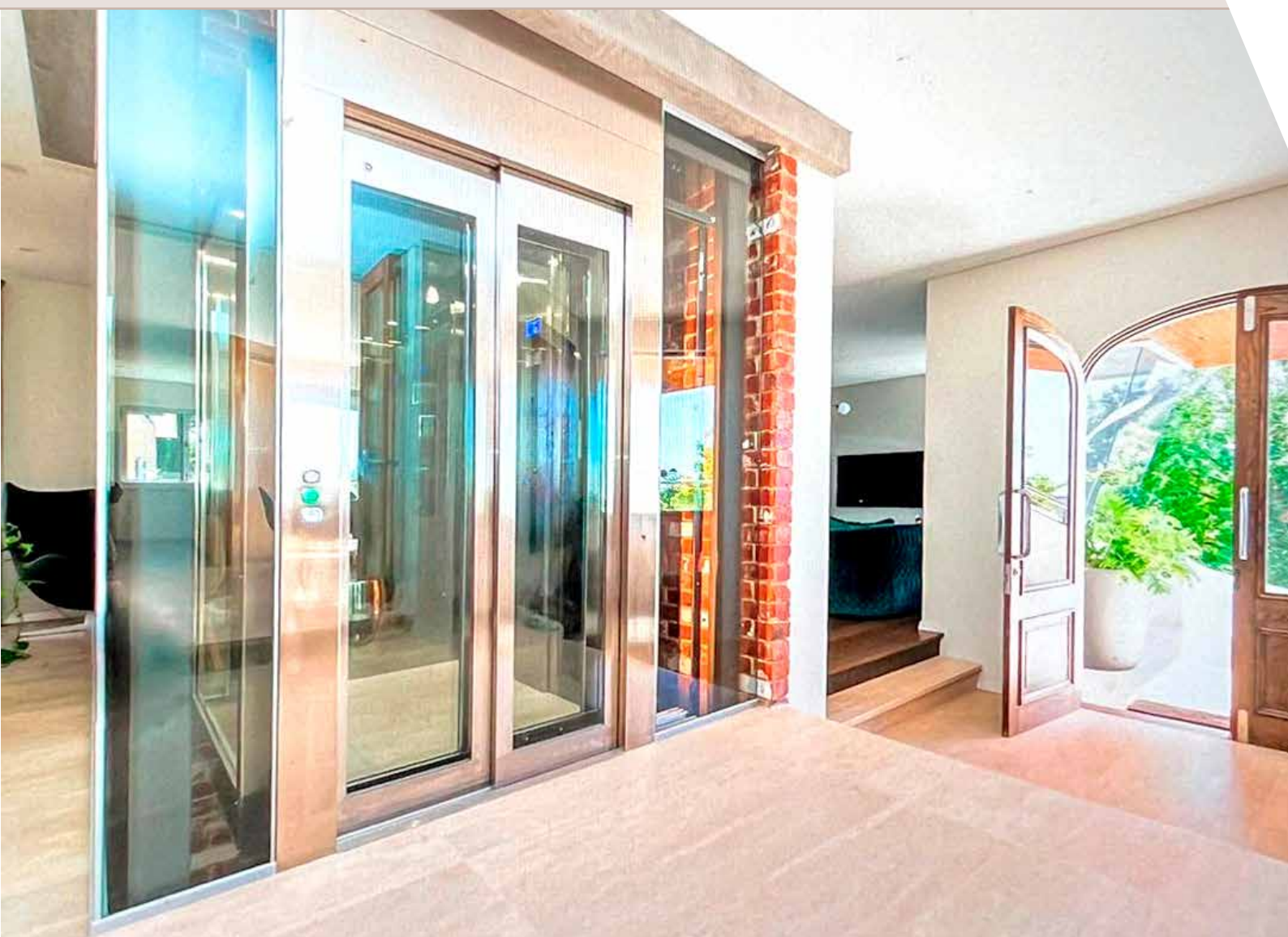


HYDRA 3000

HOMELIFT DOOR WITH REDUCED SILL AND FRAMED GLASS PANELS









Panoramic door for homelift

Wittur Hdyra 3000 reduced sill door is also available in a framed glass panel execution for homelifts.

Features

- Door panel frames: 180 mm upper frame, 50 mm wide side frames and 100 mm lower frame
- Emergency open key available on the panel only
- Spring or counterweight re-closing system according to door type and dimension
- Operator with horizontal ECO+ or MIDI+ motor
- Static light barrier installed with FICO kit at the end of the sill
- Compliant with Machinery Directive 2006/42/EC

Landing door		Car door		CO mm		CH mm		Sill
Type	Illustration	Type	Illustration	Min.	Max.	Min.	Max.	mm
01/C		02/C		600	1200	2000	2100	50
11/R-L		12/R-L		600	1200	2000	2100	75





WITTUR

YOUR GLOBAL PARTNER FOR COMPONENTS,
MODULES AND SYSTEMS IN THE ELEVATOR INDUSTRY



WITTUR.COM



HYDRA 3000 on
wittur.com



ADVANCING THE ELEVATOR INDUSTRY®