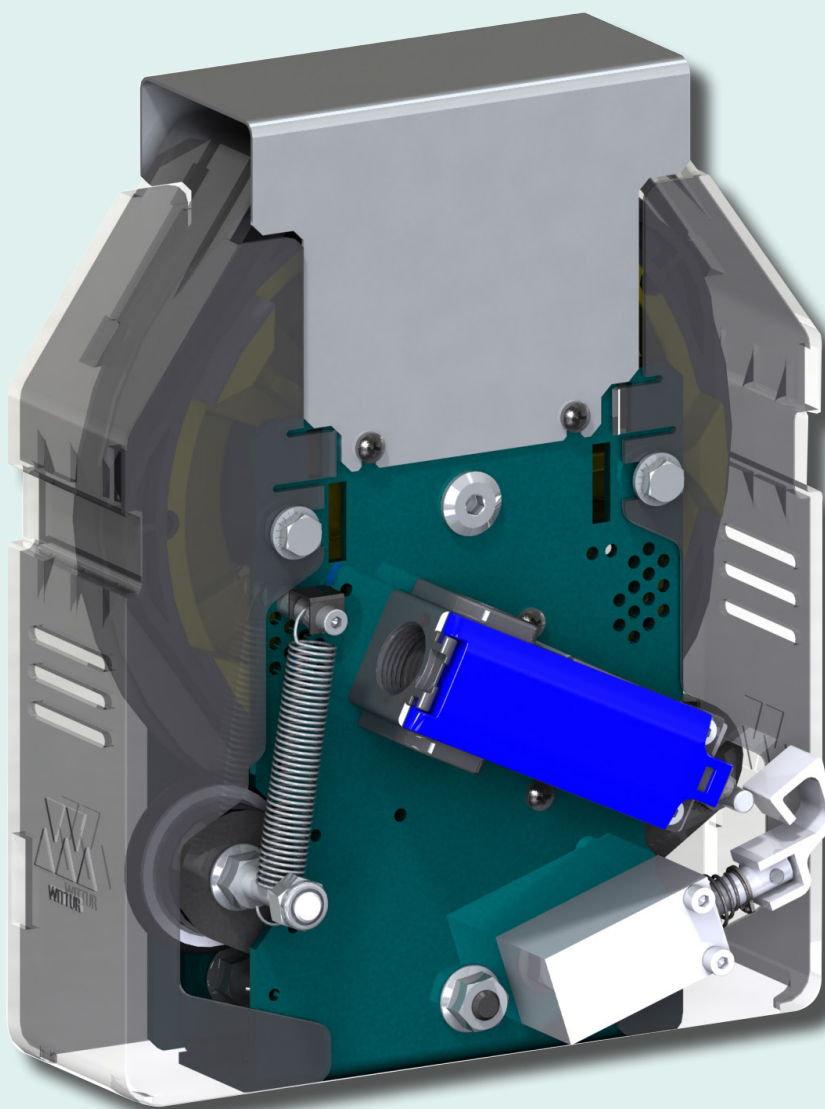


## OL20

OVERSPEED GOVERNOR FOR MACHINE ROOM (MR)  
& MACHINE ROOM-LESS (MRL) LIFTS



## FEATURES

Standardized design for MR & MRL version

Complies global standard: EN 81-20 / UKCA

Simple and reliable latch type technology

Compact design with 180 mm pulley

100% Tested in modern facility

Suitable for new Installation and modernization

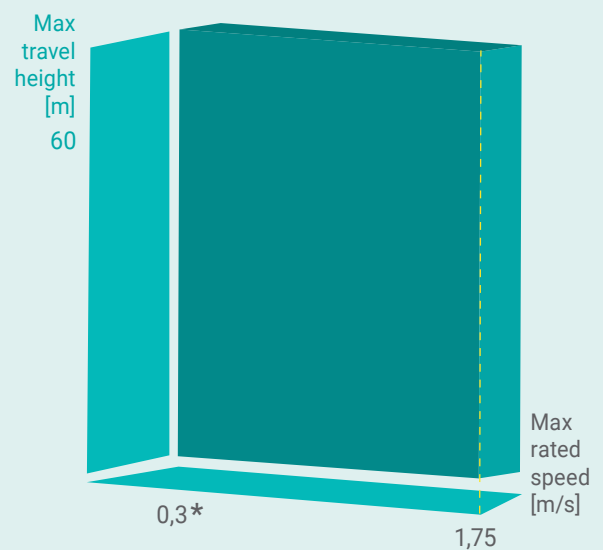
Optional: MR or MRL support brackets with fixations

Compatible spring-type rope tension device (optional)

Compliance with Seismic requirements according EN81-77

## TECHNICAL SHEET

Function	MR	MRL
Application	Car & CWT	
Norms/Certification	EN 81-1/20/50	
Activation (Tripping direction)	Unidirectional	
Handedness	Left/Right	
Mounting	Standing	guide rail fixed
Nominal Speed [m/sec]	from 0,3 up to 1,75 m/sec	
Rope wheel Diameter [mm]	180	
Rope Diameter [mm]	6	
Max. travel height [m]	60	
Rope tensile force [N]	≥300	
Reset	Manual	Remote
Remote Tripping	NOT	YES



(\*) 0,15m/s nominal speed possible (machine directive)

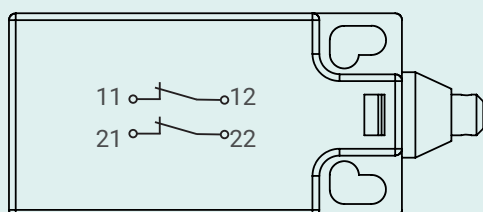
# MR Version

Manual reset version, dedicated for machine room application.

Wiring NOT included on delivery (customer dependent)

## Safety Contact (IP65 - Minimum)

Two NC contacts 11/12 & 21/22

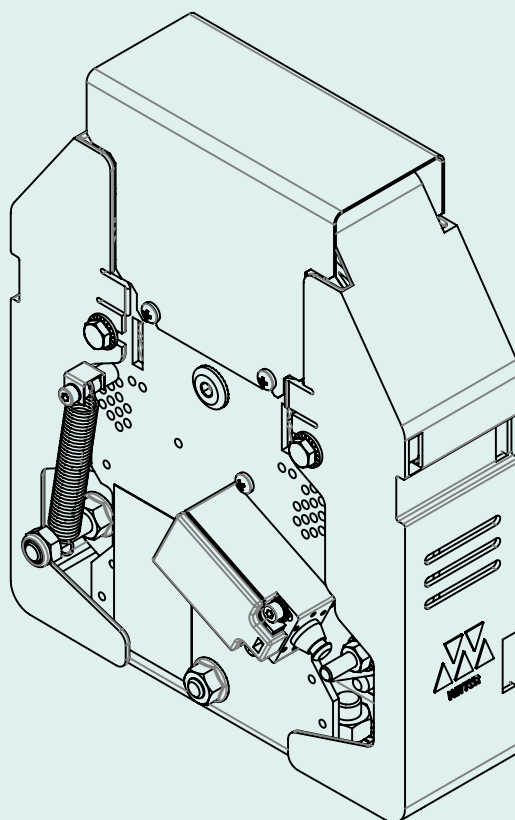


For speeds > 1 m/s: Pre-cut-off provided.

For speeds ≤ 1 m/s: NO Pre-cut-off provided.

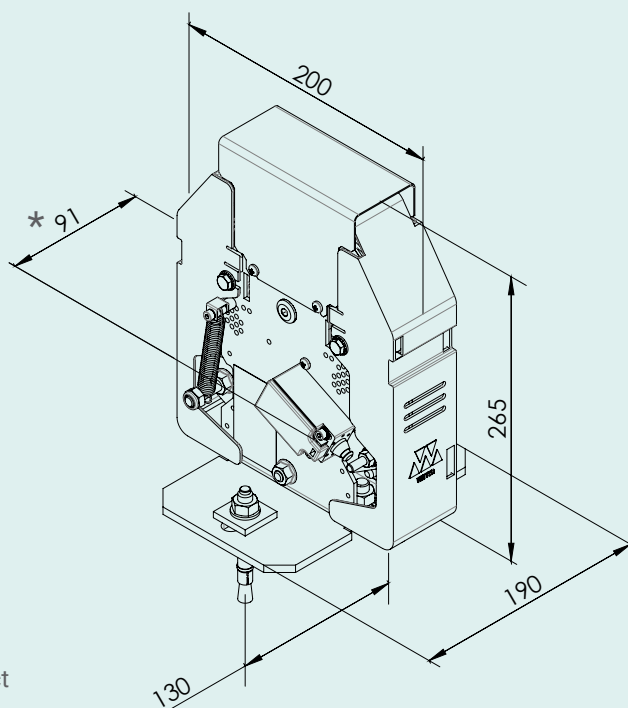
*Pre-cut-off (EN 81-20/5.6.2):*

*Stop of the lift machine by opening the safety contact before the car reaches tripping speed of the governor.*



## OPTIONAL

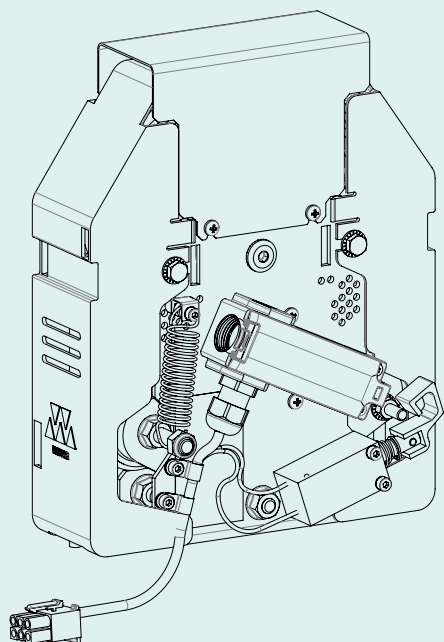
- Floor base
- Stud anchors HSA M10x90



(\*) Total width including safety contact

# MRL VERSION

Remote control version dedicated for machine room less application.



## Wiring included on delivery, containing

- 6 pins pig-tail cable (400 mm) ended on MOLEX 3191-6R1 male connector

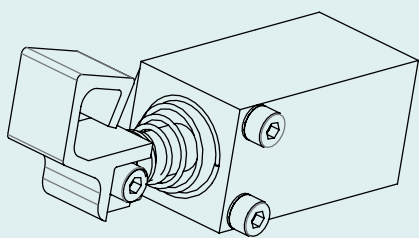
1	2	3	4	5	6
11	12	magnet	magnet	21	22

- Additional 6 pins female plug connector for fast field connection
- PTC element included to prevent magnets from electrical damage

## Remote Tripping Magnet (IP54):

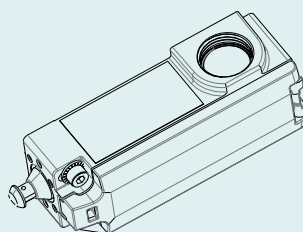
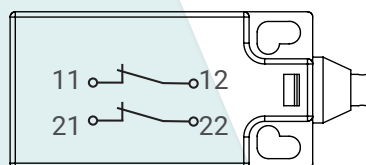
Remote magnet supply

- Voltage: 24VDC +/-15% (2,2A)
- Duty cycle: 5%; tmax: 5 sec



## Safety Contact + Reset Magnet (IP65):

- Pre cut off provided for all speeds
- Two NC contacts 11/12 & 21/22



## Magnet power supply

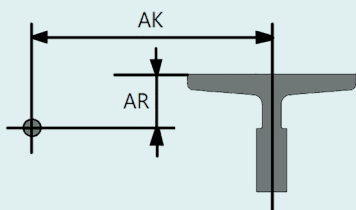
- Voltage: 24VDC +/-15% (2,2A)
- Duty cycle: 3%; tmax: 2 sec

Pre-cut-off (EN 81-20/5.6.2):  
Stop of the lift machine by opening the safety contact before the car reaches tripping speed of the governor.

## OPTIONAL:

### Guide rail base:

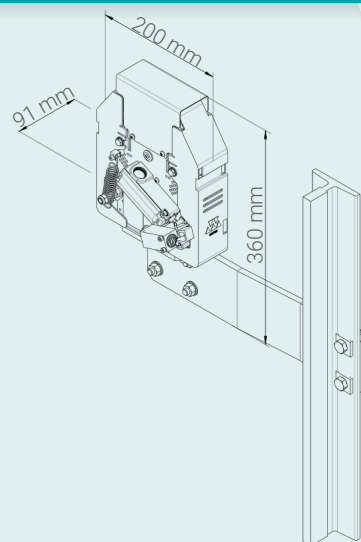
- 2 different picking point distances possible



AK / AR	MRL Standing
165 / 25-38	✓
165 / 39-52	✓

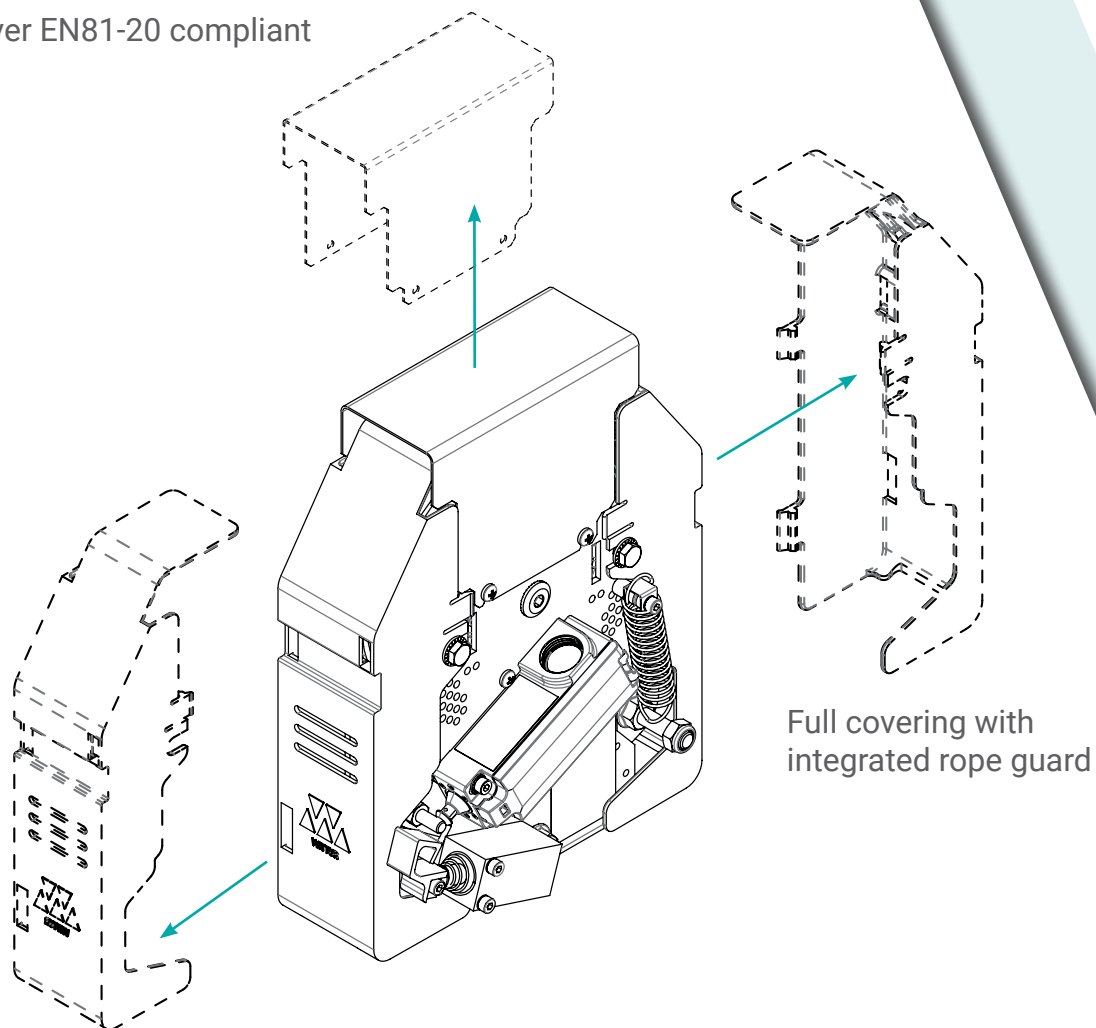
### Fixation for guide rail base

- Square washers U-sections + M12x40 Screws + M12 Washers + Nuts



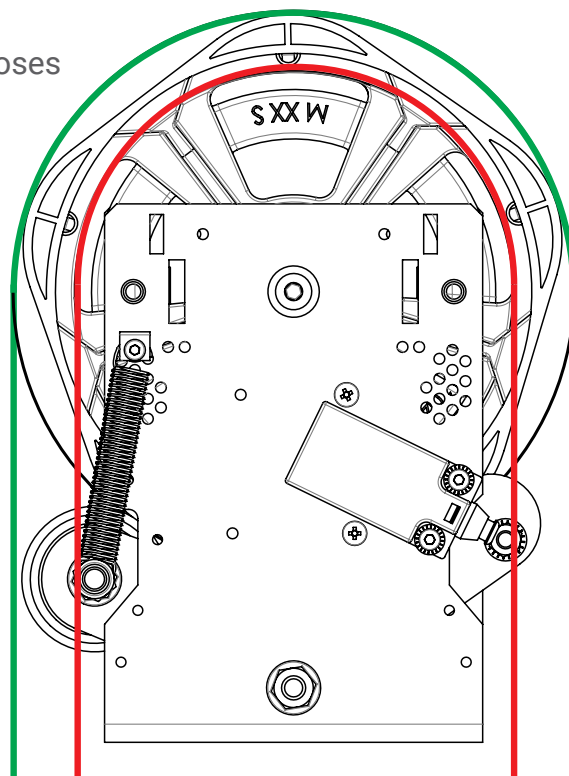
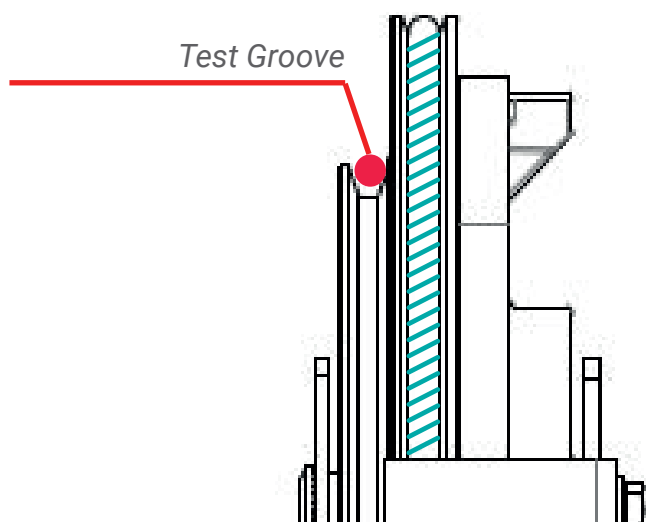
# FULL COVER

Full cover EN81-20 compliant



# TEST GROOVE

Reduction of tripping speed for testing / installation purposes  
(tripping speed reduced to 70% of nominal speed)





WITTUR

**YOUR GLOBAL PARTNER** FOR COMPONENTS,  
MODULES AND SYSTEMS IN THE ELEVATOR INDUSTRY



WITTUR.COM



OL20 on  
wittur.com



**ADVANCING** THE ELEVATOR INDUSTRY®

Subject to change without notice!

OL20 - 05 - 006642-EN - English - July 2023