

W LINE EQ

WELL-ROUNDED AND SMART SOLUTIONS



Residential
Building



Modernization



HomeLift





W Line EQ

MOD

- Preferred platform for installation in reduced spaces:
- Efficient shaft utilization
- Up to 3 entrances
- Low headroom & pit option

W LINE EQ

FEATURES

-  180-630 kg
-  1,0 m/s
-  30 m
-  Cantilevered
-  Wittur TS Series
-  Shaft width CIW* + 370 mm
-  Reduced pit 365 mm
Reduced headroom 2600 mm
-  Complete system or mechanical
-  EN 81-20 / EN 81-21

*CIW: Car Internal Width

An aerial view of a historic European city square, likely in Copenhagen, showing a mix of colorful buildings with red, orange, and grey facades. A large, ornate cathedral with a tall spire is visible in the background. The square is paved and has some greenery. The sky is clear and blue.

A WORLD OF ADVANTAGES

W Line EQ is designed for narrowest shaft requirements especially for modernization and new installation. Thanks to L sling design, provides multiple entrance options and fits even the worst-condition shafts. Modular design and detailed documentation makes installation easier and quicker.



Solution to all modernization needs



Outstanding pit and headroom



Easy and Quick Installation



Superior shaft efficiency



Flexibility for needs



Automatic layout creation

A WORLD OF ADVANTAGES





Superior Shaft Efficiency

W line EQ optimized design means you can have a bigger car in **the narrowest shafts**. Makes it easier to provide car varieties and **bigger car area**.



Outstanding pit and headroom

W Line EQ provides **reduced headroom and reduced pit together** with own special solutions. Fits even flattened shafts easily and safely.

A WORLD OF ADVANTAGES



Flexibility for needs

Makes the requirements possible! With L sling structure, **different entrance variations** are applicable now with variety car options.



Solution to all modernization needs

W Line EQ provides more adapted layouts **for modernization projects** as full replacement with different placement options. Possible to use with different door options including **Ecobus and Fineline**.

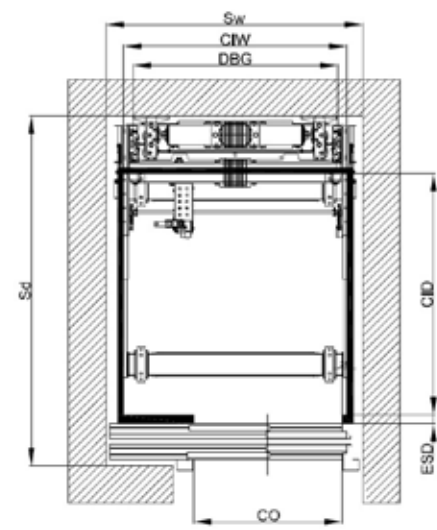
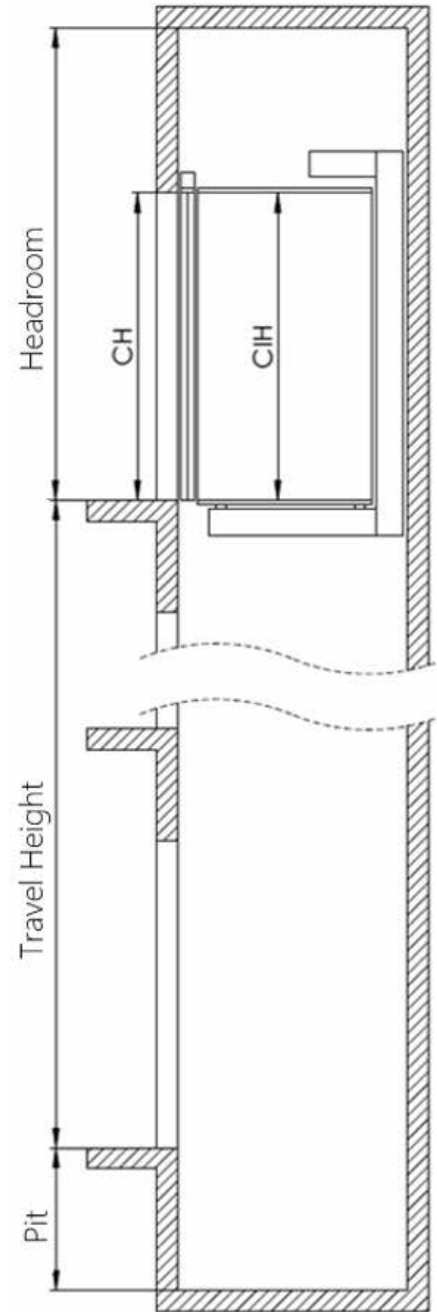


Design Table

Rated Load (Q)	kg	180	225	320	375
Suspension		1:1			
Rated Speed	m/s	1			
Max. Travel Height	m	30			
		0° / 0°-90° / 0°-180° / 0°-270°			
Car Type		MCS Series			
Car Internal Dimensions (CIW x CID) Car sling on side	mm	700 x 800	800 x 800	900 x 1000	1000 x 1100
Min. Shaft Width x Shaft Depth (Sw x Sd) Car sling on side / Standard Headroom	mm	1165 x 1140 ⁽¹⁾	1175 x 1140 ⁽¹⁾	1270 x 1335 ⁽²⁾	1370 x 1435 ⁽²⁾
Min. Shaft Width x Shaft Depth (Sw x Sd) Car sling on side / Reduced Headroom	mm	1165 x 1140 ⁽¹⁾	1260 x 1135 ⁽²⁾	1360 x 1335 ⁽²⁾	1460 x 1435 ⁽³⁾
Car Internal Dimensions (CIW x CID) Car sling on rear"	mm	700 x 800	950 x 800	1050 x 800	1050 x 1050
Min. Shaft Width x Shaft Depth (Sw x Sd) Car sling on rear / Standard Headroom	mm	1165 x 1390 ⁽¹⁾	1165 x 1390 ⁽¹⁾	1240 x 1385 ⁽²⁾	1240 x 1635 ⁽²⁾
Min. Shaft Width x Shaft Depth (Sw x Sd) Car sling on rear / Reduced Headroom"	mm	1165 x 1480 ⁽¹⁾	1165 x 1480 ⁽¹⁾	1240 x 1475 ⁽²⁾	1240 x 1725 ⁽²⁾
Standard Pit (d1)	mm	1020			
Reduced Pit (d1)	mm	365 ⁽⁵⁾			
Standard Headroom (h1) (When 700 mm balustrade)	mm	3380 ⁽⁶⁾			
Standard Headroom (h1) (When 1100 mm balustrade)	mm	3780 ⁽⁷⁾			
Reduced Headroom (h1)	mm	2625 / 2925 ⁽⁸⁾			
Door Clear Opening (CO)	mm	600 ... 1000			
Door Clear Height (CH)	mm	2000 ... 2200			
Door Type		Hydra / Augusta Evo			
Car Internal Height (CIH)	mm	2000 ... 2300			



	375	450	525	630
	2:1			
	1			
	30			
	0° / 0°-90° / 0°-180° / 0°-270°			
	MCS Series			
	1000 x 1100	1000 x 1200	1100 x 1200	1100 x 1400
	1370 x 1435 ⁽²⁾	1370 x 1535 ⁽²⁾	1470 x 1535 ⁽³⁾	1470 x 1735 ⁽³⁾
	1495 x 1435 ⁽³⁾	1495 x 1535 ⁽³⁾	1595 x 1535 ⁽⁴⁾	1595 x 1735 ⁽⁴⁾
	1100 x 1000	1200 x 1000	1100 x 1200	1200 x 1300
	1245 x 1585 ⁽²⁾	1320 x 1585 ⁽²⁾	1240 x 1785 ⁽²⁾	1380 x 1885 ⁽³⁾
	1245 x 1710 ⁽²⁾	1320 x 1710 ⁽²⁾	1240 x 1910 ⁽²⁾	1380 x 2010 ⁽³⁾
	1020			
	395 ⁽⁵⁾			
	3380 ⁽⁶⁾			
	3780 ⁽⁷⁾			
	2625			
	600 ... 1000			
	2000 ... 2200			
	Hydra / Augusta Evo			
	2000 ... 2300			



Car Sling On Rear

- (1) With CO=600mm Telescopic Door / Hydra T11 ... T12
- (2) With CO=700mm Telescopic Door / Augusta EVO T11 ... T12
- (3) With CO=800mm Telescopic Door / Augusta EVO T11 ... T12
- (4) With CO=900mm Telescopic Door / Augusta EVO T11 ... T12
- (5) With PVC floor material
- (6) Car internal height is 2100 mm
- (7) Car internal height is 2000 mm
- (8) According to DBG dimension

DOORS

Inspiring the Global Market for More Than 50 Years

A perfect coordination of aesthetic and quality, complemented with maximum application flexibility.

		Fire Rating Options	Door Type Options	Clear Opening (CO)*
AUGUSTA EVO	Landing Door	EU-E120 EU-EW30 / 60 EACU-E30 EACU-EI60 BS476 120'	T01, T11	700 ≤ CO ≤ 1100 (100)
	Car Door	-	T02, T12	700 ≤ CO ≤ 1100 (100)
HYDRA	Landing Door	EU-E120 EU-EW60 EU-EI60 / 120 BS476 120'	T01, T11, T31, T41, T43, T61	500 ≤ CO ≤ 2900 (50)
		EACU-E30	T01, T11, T41, T43	700 ≤ CO ≤ 2100 (50)
		EACU-EI60	T01, T11	700 ≤ CO ≤ 1400 (50)
	Landing Door - ESV	EU-E90 EU-EW30	T01, T11	600 ≤ CO ≤ 1400 (50)
	Car Door - Slim Glass	-	T02	600 ≤ CO ≤ 1350 (50)
Car Door - ESV	-	T02, T12, T32, T35, T42, T44, T62	600 ≤ CO ≤ 2900 (50)	
PEGASUS	Landing Door	EU-E120 EU-EW60 EU-EI60 / 120 EACU-EI60 BS476 90' / 120'	T01, T11, T31, T41, T61, T71	600 ≤ CO ≤ 3200 (50)
	Landing Door - ESV	BS476 60' / 90'	T01, T11, T41, T71	600 ≤ CO ≤ 2850 (50)
		BS476 120'	T01, T11, T41, T71	600 ≤ CO ≤ 2500 (50)
		EU-E90	T01, T11, T41	750 ≤ CO ≤ 2000 (50)
Car Door	-	T02, T12, T32, T42, T62, T72	600 ≤ CO ≤ 3200 (50)	

* For specific application range based on different CO, CH, door execution and drive, please refer to the technical catalogues.

GLASS FRAMED EI30
DOORS ARE INSTALLED
IN MOST ELEVATORS OF
METRO BUDAPEST LINE 4

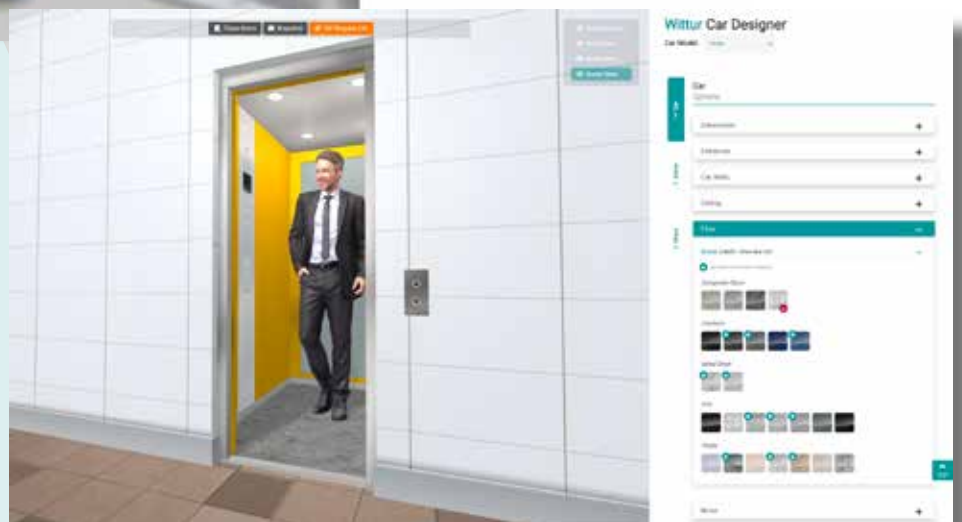
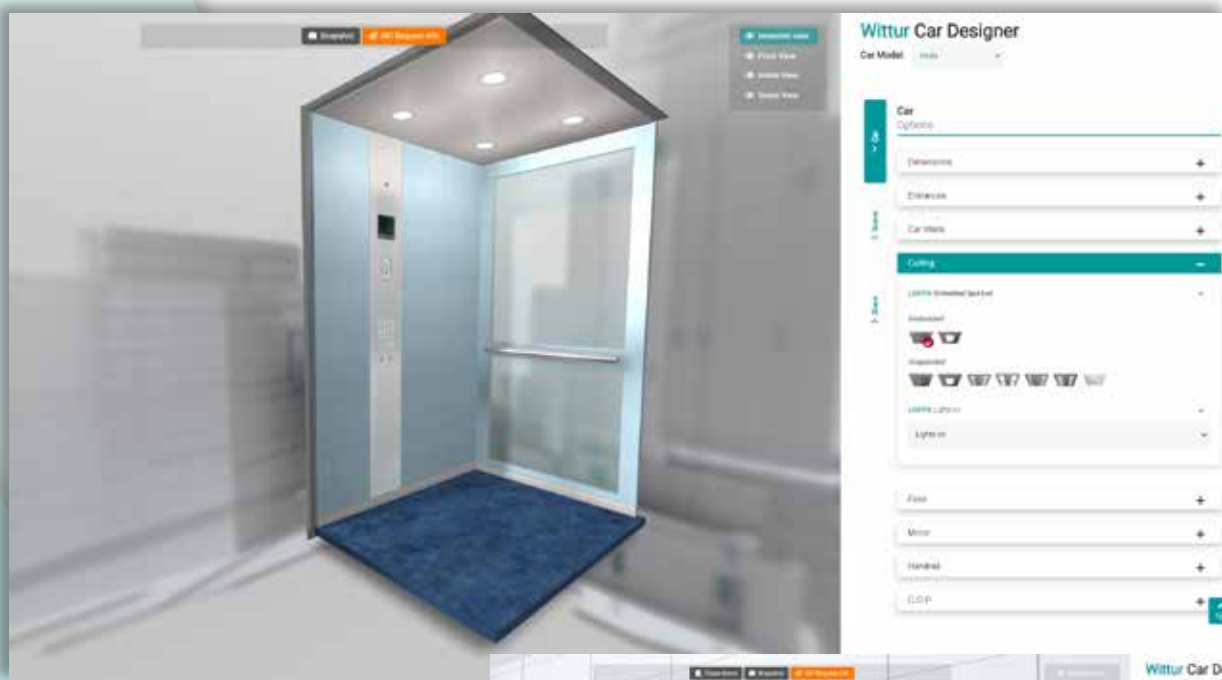
	Clear Height (CH)*	Minimum Floor to Floor Distance (HT)	Mechanical Norms	Additional Norms
	$2000 \leq CH \leq 2200$ (100)	Basic Configuration: $HT > CH + 550$	EN 81-20/50 EAC	EN 81-21
	$2000 \leq CH \leq 2200$ (100)	-	EN 81-20/50	
	$2000 \leq CH \leq 2700$ (50)	Basic Configuration: $HT > CH + 800$	EN 81-20/50	EN 81-21 EN 81-71 Cat. 1
	$2000 \leq CH \leq 2650$ (50)		EAC	
	$2000 \leq CH \leq 2450$ (50)			
	$2000 \leq CH \leq 2200$ (50)		EN 81-20/50	
	$2000 \leq CH \leq 2200$ (50)	-	EN 81-20/50	
	$2000 \leq CH \leq 2300$ (50)	-	EN 81-1/2 EN 81-20/50	EN 81-21
	$2000 \leq CH \leq 3800$ (50)	Basic Configuration: $HT > CH + 640$	EN 81-1/2 EN 81-20/50 EAC	EN 81-21 EN 81-70 EN 81-71 Cat. 1 EN 81-71 Cat. 2 EN 81-72
	$2000 \leq CH \leq 2850$ (50)	Basic Configuration: $HT > CH + 640$	EN 81-1/2 EN 81-20/50 EAC	EN 81-21 EN 81-70 EN 81-71 Cat. 1 EN 81-72
	$2000 \leq CH \leq 2600$ (50)			
	$2000 \leq CH \leq 2500$ (50)			
	$2000 \leq CH \leq 3800$ (50)	-	EN 81-1/2 EN 81-20/50	EN 81-70 EN 81-71 Cat. 1 EN 81-71 Cat. 2 EN 81-72

Wittur Car Designer

Wittur has developed a powerful online tool to test different aesthetic choices and find the perfect internal design for your Elevator with Wittur car.

What can you do with the Wittur Car Designer?

- Customize walls and floor finishes of the car
- Customize mirror, COP position and lighting
- Select single or double entrance and add a panoramic wall
- Simulate the colors of the upholstery of your environment
- Freely explore the 3D model from all angles
- Get snapshots from any angle
- Request specific information about the chosen solution





WITTUR



Superior design is now more affordable

Increasing features and options whilst keeping customer budgets in mind.

Painted Series



FLOOR: PVC / Altro Dolphin
WALL PANELS: Electrostatic Powder Paint / RAL7032
LIGHTING: IL 225 (on ceiling Type-1)

Stainless Steel Series

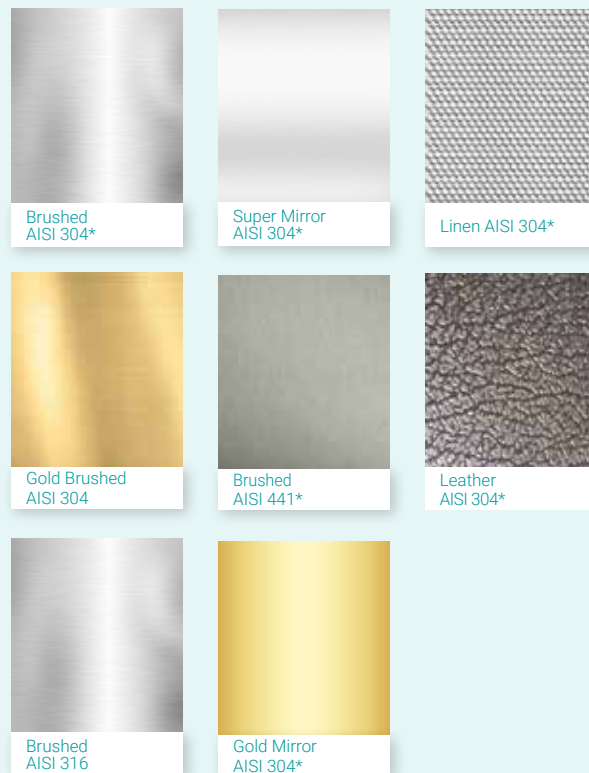


FLOOR: PVC / Altro Dolphin
WALL PANELS: Stainless Steel / AISI 304 Brushed
LIGHTING: IL 200 (on ceiling Type-1)

Walls



Walls



HPL Series



FLOOR: Composite Stone / Dove Tail 2402
WALL PANELS: Stainless Steel / Brushed & HPL /
 Bouleau Argente
LIGHTING: IL 203 (on cieling Type-1)

Walls



B131 - Bouleau
Argente*



U191 -
Underground Corten*



C151
Caldeira OT2*



S046 - Wood Silver
Black*

Back Painted Glass Series

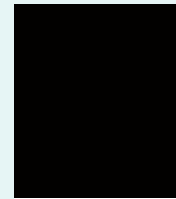


FLOOR: Composite Stone / Black Star 656
WALL PANELS: Stainless Steel / Super Mirror &
 Painted Glass / Black
LIGHTING: IL 200 (on cieling Type-1)

Walls



RAL 9003
Pure White



RAL 9005
Jet Black



RAL 1236
Light Brown

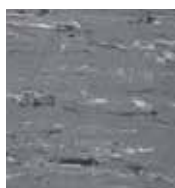


RAL 1015
Light Ivory

* Standard finishes

Floor

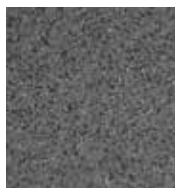
PVC



2-G010 *
PVC Marbled Grey



2-G030 *
ALTRO Cloud



2-G032 *
ALTRO Dolphin

Vinylic



2-Y002 *
Blue Avio 8350



2-Y004 *
Cipria 8300



2-Y007 *
Grigio Ghiaccio 8500

Linoleum



2-N003 *
Black 2939



2-N004 *
Graphite 3048



2-N005 *
Serene Grey 3146

Composite Stone



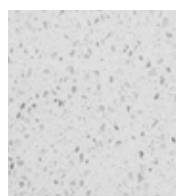
2-R012
Perla di Sabbia 617



2-R019
Dove Tail 2402

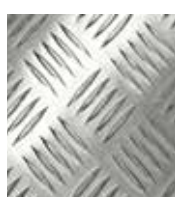


2-R024
Black Star 656



2-R025
White Star 655

Metal



2-G024
Knurled Aluminum



2-G029
Chequered St. Steel

Lightings



IL 200



IL 201



IL 203



IL 205



IL 225



IL 300

Car Operating Panel



Wittur COPs are available in different finishes both in full height and half height executions for your complete system projects. Wittur can supply data plates and CE marking plate complete with installer company logo. Besides standard options, Wittur can offer tailored solutions for special requirements upon request. Check out the System catalogues to see full range of models and contact with your Sales Representative for compatibility with your system offer.



OCEAN
OCLT04S0



OCEAN
OCLDD5E0



MOON
932-CT4D



MOON
732-CT4D



scan the QR code
for more information
about the VESTA cabin

Designed and manufactured by Wittur to comply with worldwide rules and regulations

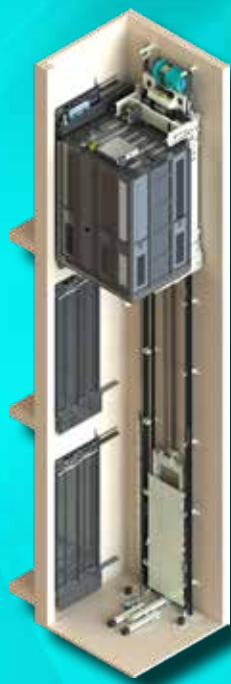
Wittur quality components inside.



W LINE SLS
Residential

Preferred platform for passenger lift:

- High ride comfort and low noise
- Cost-effective solution
- Short installation time
- Reduced headroom & pit option



W LINE EQ
Mod

Preferred platform for installation in reduced spaces:

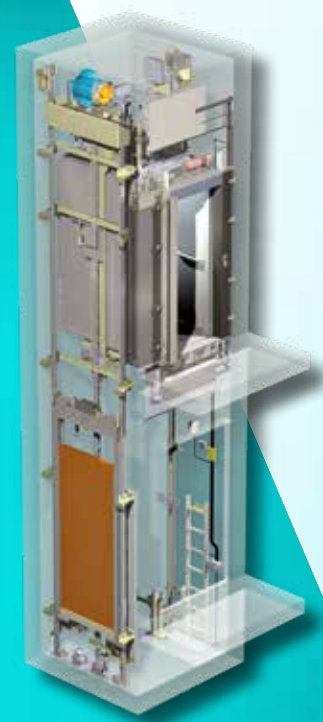
- Efficient shaft utilization
- Up to 3 entrances
- Low headroom & pit option



W LINE MAX
Mid-Duty

Preferred platform for mixed use and public building installations:

- Highest ride comfort in its class
- Belt driven and symmetric design
- Quick scaffold-less installation
- Reduced headroom & pit option



W LINE
Modular

Preferred platform for robust and special execution:

- Mid-Rise
- Vandal resistant
- Fire fighting lift
- Full panoramic

and codes.

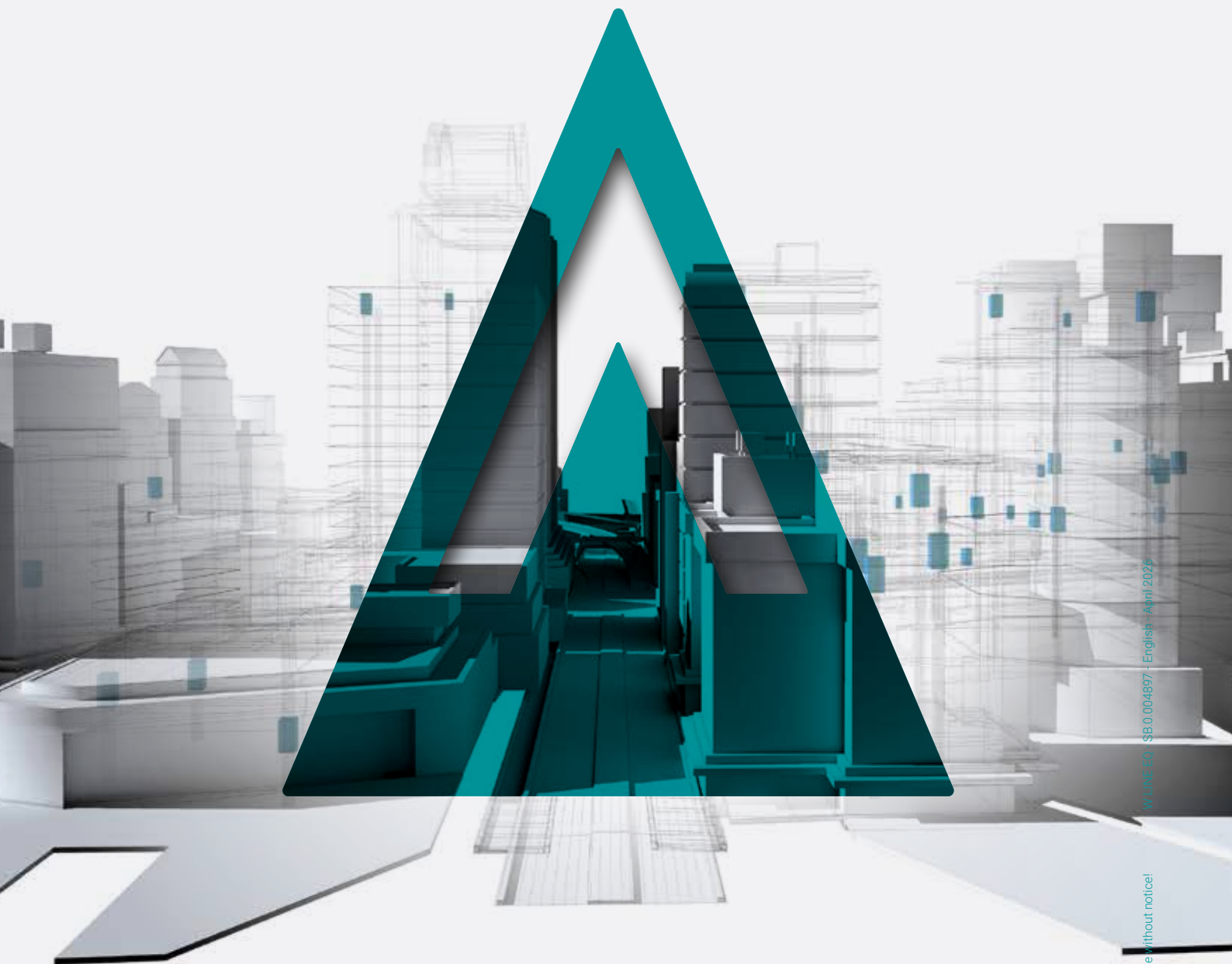
Features	W LINE SLS	W LINE EQ	W LINE MAX	W LINE
	320 - 1000 kg	180 - 630 kg	1050 - 2000 kg	320 - 5000 kg
	1,0 - 1,6 m/s	1,0 m/s	1,0 - 1,6 m/s	1,0 - 4,0 m/s
	45 - 70 m	30 m	30 - 45 m	200 m
	Central guided	Cantilevered	Central guided	Central guided
	Wittur SF series	Wittur TS series	Wittur TB series / Belt traction	Wittur SF - MF - LF - WSG series
	Shaft width CIW* + 525 mm	Shaft width CIW* + 370 mm	Shaft width CIW* + 625 mm	Shaft width CIW* + 700 mm
	Reduced pit 550 mm Reduced headroom 2575 mm	Reduced pit 365 mm Reduced headroom 2600 mm	Reduced pit 870 mm Reduced headroom 3000 mm	Reduced pit 400 mm Reduced headroom 3250 mm
	Complete system or Mechanical Pack	Complete system or Mechanical Pack	Complete system or Mechanical Pack	Complete system or Mechanical Pack
	EN 81-20 / EN 81-21	EN 81-20 / EN 81-21	EN 81-20 / EN 81-21	EN 81-20 / EN 81-21

*CIW: Car Internal Width



WITTUR

YOUR GLOBAL PARTNER FOR COMPONENTS,
MODULES AND SYSTEMS IN THE ELEVATOR INDUSTRY



WITTUR.COM



W LINE EQ
on Wittur.com

ADVANCING THE ELEVATOR INDUSTRY®

W LINE EQ - SB.0.004897 - English - April 2026

Subject to change without notice!