

W LINE

MODULAR & FLEXIBLE



Residential Building



Transport



Hospital



Shopping



Hotel



HomeLift



High Rise





W Line










MODULAR

Preferred platform for robust and special execution:

- Mid-Rise
- Vandal resistant
- Fire fighting lift
- Full panoramic

W LINE

FEATURES

-  320-5000 kg
-  1,0 - 4 m/s
-  200 m
-  Central guided
-  Wittur SF - MF - LF - WSG series
-  Shaft width CIW* + 700 mm
-  Reduced pit 400 mm | Reduced Headroom 3250 mm
-  Complete system or mechanical kit only
-  EN 81-20 / EN 81-21 / EN 81-28 /
EN 81-50 / EN 81-70

*CIW: Car Internal Width

A WORLD OF ADVANTAGES



W Line is a new modular and flexible complete system. It's an ideal solution for residential, commercial and public buildings based on innovative sectional design.



Modular and Flexible



**Robust, smooth
stable and safe
design**



**Highly customisable
with cw position,
slings, cars etc.**



**Proven premium
wittur component
throughout**

A WORLD OF ADVANTAGES



Modular and Flexible

Compatible parts can be easily modified with different customer needs. Nearly infinite possibilities with wide range of system from 320kg to 5000kg and up to 4m/s.



Robust, smooth stable and safe design

Designed, tested and engineered by experienced Wittur engineers. More than 20 years production and installed thousands of times.



W-LINE | Design Table

Rated Load (Q)	kg	320	400	450	630	800
Suspension		2:1				
Rated Speed	m/s	1	1	1,0 / 1,6	1,0 / 1,6 / 2,0	1,0 / 1,6 / 2,0 / 2,5
Max. Travel Height	m	30	30	30 / 60	30 / 60 / 90	30 / 60 / 90 / 120
Entrance Type		0° / 0° - 180°				
Car Internal Dimensions (CIW x CID)	mm	900x1000	1100x1000	1000x1200	1100x1400	1350x1400
Minimum Shaft Dimensions (Sw x Sd)	mm	CIW + 520(1) / CID+80+ESD+X(Door Package)				
Standard Pit (d1)	mm	1050	1050	1050 / 1150	1050 / 1150 / 1250	1050 / 1150 / 1250 / 1585
Reduced Pit (d1)	mm	400 ⁽²⁾ / 900 ⁽²⁾				
Standard Headroom (h1) (When 700 mm balustrade)	mm	3515 ⁽³⁾	3515 ⁽³⁾	3515 / 3665 ⁽³⁾	3515 / 3665 / 3800 ⁽³⁾	3515 / 3665 ^{(3) (4)}
Standard Headroom (h1) (When 1100 mm balustrade)	mm	3785 ⁽³⁾	3785 ⁽³⁾	3785 / 3945 ⁽³⁾	3785 / 3945 / 4080 ⁽³⁾	3785 / 3945 / 4170 / 5150 ⁽³⁾
Reduced Headroom min.	mm	3265 ⁽⁴⁾	3265 ⁽⁴⁾	3265 / 3425 ⁽⁴⁾	3265 / 3425 ^{(4) (5)}	3265 / 3425 / 3615 ^{(4) (5)}
Clear Opening (CO)	mm	600 ... 1600				
Clear Height (CH)	mm	2000 ... 2600				
Door Type		Hydra / Augusta Evo				
Car Internal Height (CIH)	mm	2000 ... 3000				

(1) Minimum values are for 1 m/s. For other speeds, please see Technical Catalogue for more details.

(2) with PVC floor

(3) Car internal height is 2100mm

(4) Car internal height is 2000mm

(5) Reduced Headrom is not available for some cases, please see Technical Catalogue for more details.

(6) with interior ladder

*Only possible in EN81-1 and special cases.

Some values may change according to concept, please see Technical Catalogue for more details.

Please contact us for applications heavier than 2500 kg and faster than 4 m/s.

1000	1275	1600	2000	2500
2:1				
1,0 / 1,6 / 2,0 / 2,5 / 3	1,0 / 1,6 / 2,0 / 2,5 / 3,0	1,0 / 1,6 / 2,0 / 2,5 / 3,0	1,0 / 1,6 / 2,0	1,0 / 1,6
30 / 60 / 90 / 120 / 150	30 / 60 / 90 / 120 / 150	30 / 60 / 90 / 120 / 150	30 / 60 / 90	30 / 60
0° / 0° - 180°				
1100x2100	1200 x 2300 (up to 2,5m/s) 1300 x 2200 (for 3m/s)	1400 x 2400	1500 x 2700	1800 x 2700
CIW + 720(1) / CID+80+ESD+X(Door Package)				
1050 / 1150 / 1250 / 1585 / 2150	1200 / 1300 / 1400 / 1585 / 2150	1200 / 1300 / 1400 / 1585 / 2150	1200 / 1300 / 1400	1200 / 1300
3515 / 3665 ^{(3) (4)}				
3770 / 3945 / 4170 / 5150 / 5550 ⁽³⁾	3835 / 3995 / 4195 / 5150 / 5650 ⁽³⁾	3810 / 3970 / 4630 / 5150 / 5650 ⁽³⁾	4320 / 4480 / 4630 ⁽³⁾	4320 / 4480 ⁽³⁾
3265 / 3425 / 3615 ^{(4) (5)}	3265 / 3425 ^{(4) (5)}	3265 / 3425 ^{(4) (5)}	-	-
600 ... 1600				
2000 ... 2600				
Hydra / Augusta Evo				
2000 ... 3000				



W-LINE H | Design Table

Rated Load (Q)	kg	1000	1275	1350	1600
Suspension		1:1 Double Wrap			
Rated Speed	m/s	3.5			
Max. Travel Height	m	200			
Entrance Type		0° / 0° - 180°			
Car Internal Dimensions (CIW x CID)	mm	1600x1400	2000x1400	1850x1600	2100x1600
Minimum Shaft Dimensions (Sw x Sd)	mm	CIW+950 / CIW+1110 ⁽⁶⁾			
Standard Pit (d1)	mm	3000			
Reduced Pit (d1)	mm	-			
Standard Headroom (h1) (When 700 mm balustrade)	mm	4650 ⁽³⁾			
Standard Headroom (h1) (When 1100 mm balustrade)	mm	4650 ⁽³⁾			
Reduced Headroom min.	mm	-			
Clear Opening (CO)	mm	600 ... 1800			
Clear Height (CH)	mm	2000 ... 2700			
Door Type		Hydra / Pegasus			
Car Internal Height (CIH)	mm	2000 ... 3000			

(1) Minimum values are for 1 m/s. For other speeds, please see Technical Catalogue for more details.

(2) with PVC floor

(3) Car internal height is 2100mm

(4) Car internal height is 2000mm

(5) Reduced Headrom is not available for some cases, please see Technical Catalogue for more details.

(6) with interior ladder

*Only possible in EN81-1 and special cases.

Some values may change according to concept, please see Technical Catalogue for more details.

Please contact us for applications heavier than 2500 kg and faster than 4 m/s.

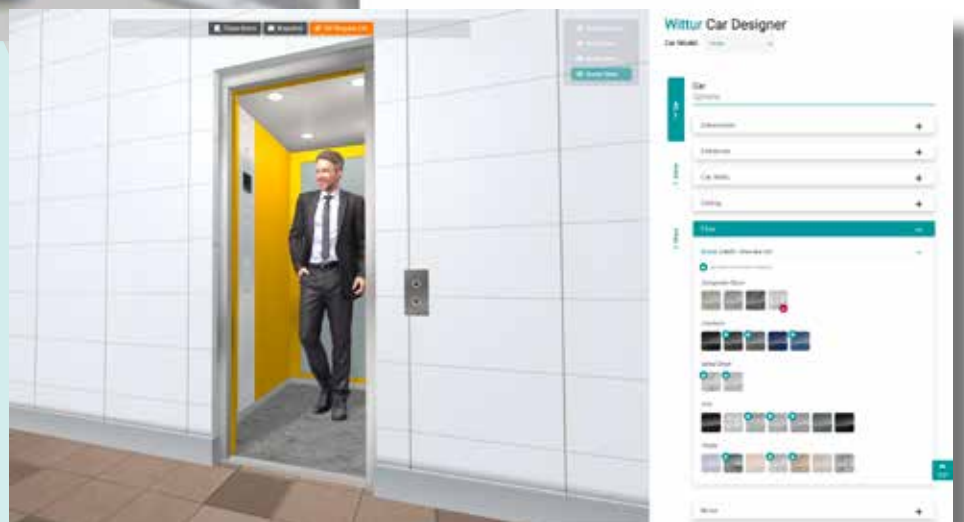


Wittur Car Designer

Wittur has developed a powerful online tool to test different aesthetic choices and find the perfect internal design for your Elevator with Wittur car.

What can you do with the Wittur Car Designer?

- Customize walls and floor finishes of the car
- Customize mirror, COP position and lighting
- Select single or double entrance and add a panoramic wall
- Simulate the colors of the upholstery of your environment
- Freely explore the 3D model from all angles
- Get snapshots from any angle
- Request specific information about the chosen solution





WITTUR



Superior design is now more affordable

Increasing features and options whilst keeping customer budgets in mind.

Painted Series



FLOOR: PVC / Altro Dolphin
WALL PANELS: Electrostatic Powder Paint / RAL7032
LIGHTING: IL 225 (on ceiling Type-1)

Stainless Steel Series

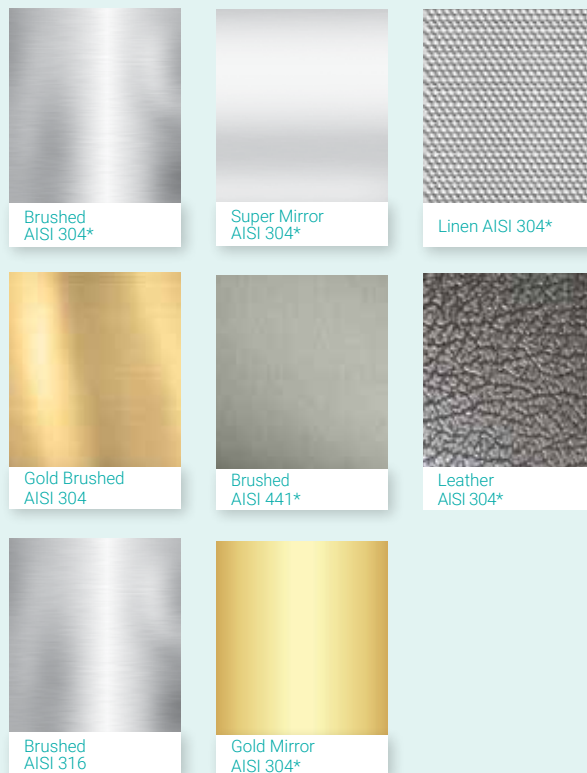


FLOOR: PVC / Altro Dolphin
WALL PANELS: Stainless Steel / AISI 304 Brushed
LIGHTING: IL 200 (on ceiling Type-1)

Walls



Walls



HPL Series



FLOOR: Composite Stone / Dove Tail 2402
WALL PANELS: Stainless Steel / Brushed & HPL /
Bouleau Argente
LIGHTING: IL 203 (on ceiling Type-1)

Walls



B131 - Bouleau
Argente*



U191 -
Underground Corten*



C151
Caldeira OT2*



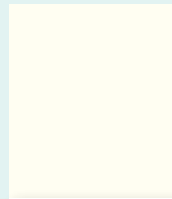
S046 - Wood Silver
Black*

Back Painted Glass Series

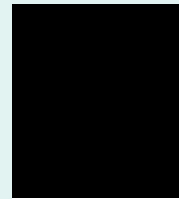


FLOOR: Composite Stone / Black Star 656
WALL PANELS: Stainless Steel / Super Mirror &
Painted Glass / Black
LIGHTING: IL 200 (on ceiling Type-1)

Walls



RAL 9003
Pure White



RAL 9005
Jet Black



RAL 1236
Light Brown



RAL 1015
Light Ivory

* Standard finishes

Floor

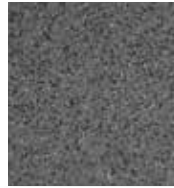
PVC



2-G010 *
PVC Marbled Grey



2-G030 *
ALTRO Cloud



2-G032 *
ALTRO Dolphin

Vinylic



2-Y002 *
Blue Avio 8350



2-Y004 *
Cipria 8300



2-Y007 *
Grigio Ghiaccio 8500

Linoleum



2-N003 *
Black 2939



2-N004 *
Graphite 3048



2-N005 *
Serene Grey 3146

Composite Stone



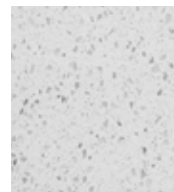
2-R012
Perla di Sabbia 617



2-R019
Dove Tail 2402



2-R024
Black Star 656



2-R025
White Star 655

Metal



2-G024
Knurled Aluminum



2-G029
Chequered St. Steel

Lightings



IL 200



IL 201



IL 203



IL 205



IL 225



IL 300

Car Operating Panel



Wittur COPs are available in different finishes both in full height and half height executions for your complete system projects. Wittur can supply data plates and CE marking plate complete with installer company logo. Besides standard options, Wittur can offer tailored solutions for special requirements upon request. Check out the System catalogues to see full range of models and contact with your Sales Representative for compatibility with your system offer.



OCEAN
OCLT04S0



OCEAN
OCLDD5E0



MOON
932-CT4D



MOON
732-CT4D

scan the QR code
for more information
about the VESTA cabin



DOORS

Inspiring the Global Market for More Than 50 Years

A perfect coordination of aesthetic and quality, complemented with maximum application flexibility.

		Fire Rating Options	Door Type Options	Clear Opening (CO)*
AUGUSTA EVO	Landing Door	EU-E120 EU-EW30 / 60 EACU-E30 EACU-EI60 BS476 120'	T01, T11	700 ≤ CO ≤ 1100 (100)
	Car Door	-	T02, T12	700 ≤ CO ≤ 1100 (100)
HYDRA	Landing Door	EU-E120 EU-EW60 EU-EI60 / 120 BS476 120'	T01, T11, T31, T41, T43, T61	500 ≤ CO ≤ 2900 (50)
		EACU-E30	T01, T11, T41, T43	700 ≤ CO ≤ 2100 (50)
		EACU-EI60	T01, T11	700 ≤ CO ≤ 1400 (50)
	Landing Door - ESV	EU-E90 EU-EW30	T01, T11	600 ≤ CO ≤ 1400 (50)
	Car Door - Slim Glass	-	T02	600 ≤ CO ≤ 1350 (50)
Car Door - ESV	-	T02, T12, T32, T35, T42, T44, T62	600 ≤ CO ≤ 2900 (50)	
PEGASUS	Landing Door	EU-E120 EU-EW60 EU-EI60 / 120 EACU-EI60 BS476 90' / 120'	T01, T11, T31, T41, T61, T71	600 ≤ CO ≤ 3200 (50)
		BS476 60' / 90'	T01, T11, T41, T71	600 ≤ CO ≤ 2850 (50)
	Landing Door - ESV	BS476 120'	T01, T11, T41, T71	600 ≤ CO ≤ 2500 (50)
		EU-E90	T01, T11, T41	750 ≤ CO ≤ 2000 (50)
Car Door	-	T02, T12, T32, T42, T62, T72	600 ≤ CO ≤ 3200 (50)	

* For specific application range based on different CO, CH, door execution and drive, please refer to the technical catalogues.

GLASS FRAMED EI30
DOORS ARE INSTALLED
IN MOST ELEVATORS OF
METRO BUDAPEST LINE 4

Clear Height (CH)*	Minimum Floor to Floor Distance (HT)	Mechanical Norms	Additional Norms
2000 ≤ CH ≤ 2200 (100)	Basic Configuration: HT>CH+550	EN 81-20/50 EAC	EN 81-21
2000 ≤ CH ≤ 2200 (100)	-	EN 81-20/50	
2000 ≤ CH ≤ 2700 (50)		EN 81-20/50	
2000 ≤ CH ≤ 2650 (50)	Basic Configuration: HT>CH+800	EAC	EN 81-21 EN 81-71 Cat. 1
2000 ≤ CH ≤ 2450 (50)			
2000 ≤ CH ≤ 2200 (50)		EN 81-20/50	
2000 ≤ CH ≤ 2200 (50)	-	EN 81-20/50	
2000 ≤ CH ≤ 2300 (50)	-	EN 81-1/2 EN 81-20/50	EN 81-21
2000 ≤ CH ≤ 3800 (50)	Basic Configuration: HT>CH+640	EN 81-1/2 EN 81-20/50 EAC	EN 81-21 EN 81-70 EN 81-71 Cat. 1 EN 81-71 Cat. 2 EN 81-72
2000 ≤ CH ≤ 2850 (50)	Basic Configuration: HT>CH+640	EN 81-1/2	EN 81-21
2000 ≤ CH ≤ 2600 (50)		EN 81-20/50	EN 81-70
2000 ≤ CH ≤ 2500 (50)		EAC	EN 81-71 Cat. 1 EN 81-72
2000 ≤ CH ≤ 3800 (50)	-	EN 81-1/2 EN 81-20/50	EN 81-70 EN 81-71 Cat. 1 EN 81-71 Cat. 2 EN 81-72

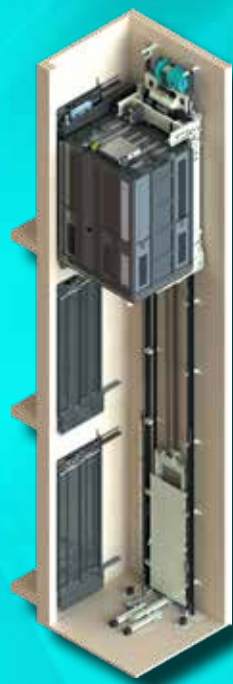
Designed and manufactured by Wittur to comply with worldwide rules and regulations. *Wittur quality components inside.*



W LINE SLS
Residential

Preferred platform for passenger lift:

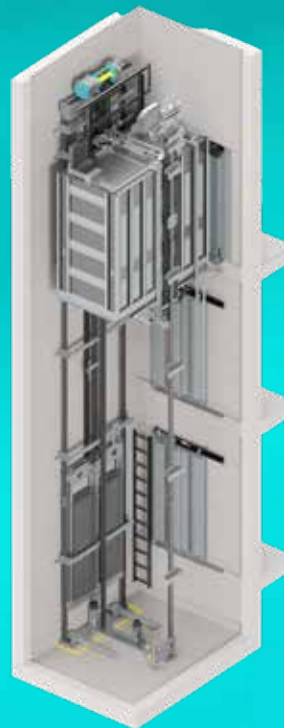
- High ride comfort and low noise
- Cost-effective solution
- Short installation time
- Reduced headroom & pit option



W LINE EQ
Mod

Preferred platform for installation in reduced spaces:

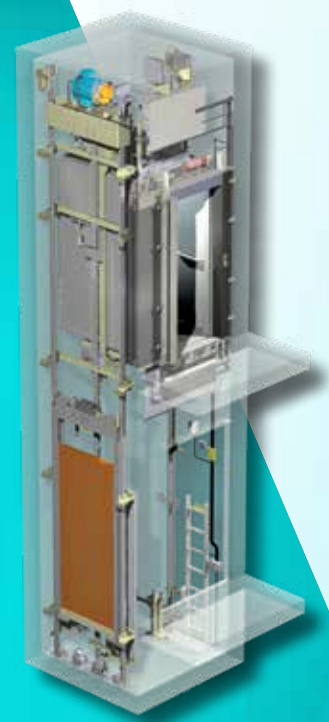
- Efficient shaft utilization
- Up to 3 entrances
- Low headroom & pit option



W LINE MAX
Mid-Duty

Preferred platform for mixed use and public building installations:

- Highest ride comfort in its class
- Belt driven and symmetric design
- Quick scaffold-less installation
- Reduced headroom & pit option



W LINE
Modular

Preferred platform for robust and special execution:

- Mid-Rise
- Vandal resistant
- Fire fighting lift
- Full panoramic

and codes.

Features	W LINE SLS	W LINE EQ	W LINE MAX	W LINE
	320 - 1000 kg	180 - 630 kg	1050 - 2000 kg	320 - 5000 kg
	1,0 - 1,6 m/s	1,0 m/s	1,0 - 1,6 m/s	1,0 - 4,0 m/s
	45 - 70 m	30 m	30 - 45 m	200 m
	Central guided	Cantilevered	Central guided	Central guided
	Wittur SF series	Wittur TS series	Wittur TB series / Belt traction	Wittur SF - MF - LF - WSG series
	Shaft width CIW* + 525 mm	Shaft width CIW* + 370 mm	Shaft width CIW* + 625 mm	Shaft width CIW* + 700 mm
	Reduced pit 550 mm Reduced headroom 2575 mm	Reduced pit 365 mm Reduced headroom 2600 mm	Reduced pit 870 mm Reduced headroom 3000 mm	Reduced pit 400 mm Reduced headroom 3250 mm
	Complete system or Mechanical Pack	Complete system or Mechanical Pack	Complete system or Mechanical Pack	Complete system or Mechanical Pack
	EN 81-20 / EN 81-21	EN 81-20 / EN 81-21	EN 81-20 / EN 81-21	EN 81-20 / EN 81-21

*CIW: Car Internal Width



WITTUR

YOUR GLOBAL PARTNER FOR COMPONENTS,
MODULES AND SYSTEMS IN THE ELEVATOR INDUSTRY



WITTUR.COM



ADVANCING THE ELEVATOR INDUSTRY®

WLINE - 55 0007659EN | English | April 2025

Subject to change without notice!