

PEGASUS Skyline

CAR AND LANDING DOOR FOR HIGH RISE APPLICATIONS



safety **in** motion™



WELCOME TO WITTUR!

YOUR GLOBAL PARTNER FOR
COMPONENTS, MODULES AND SYSTEMS
IN THE ELEVATOR INDUSTRY

45+

years of experience
and value creation

**We are your global solution
provider in the elevator world.**

Our experience reaches back 45
years in which we have developed
ourselves into a valuable supplier
for our numerous customers
in more than 60 countries
around the world.

safety *in motion*[™]

The key to our success is based on the ideas, commitment and expertise of our more than 3500 employees worldwide, who contribute to continuous improvement on all levels. Our management as well as our staff are truly global and we encourage the interplay of different cultures and nationalities in our project teams and offer international career paths. In each of our 10 manufacturing sites we have committed ourselves to the same standards of excellence, assuring that our products are of highest quality, produced efficiently by applying environmentally friendly manufacturing processes.

10

manufacturing sites

60

countries



3.500

employees



safety *in* **motion**™

Wittur is Safety in Motion! We are a driving force for safety in the elevator industry and are always looking for possibilities to improve our performance. The high level of safety we supply is not only reflected in our products and solutions but is also visible at each of our manufacturing sites. It is our responsibility to assure that our employees return home safely every day. This holistic safety standard is managed by the worldwide *Wittur Production System*: a structured process incorporating *Concern Rooms* to handle feedbacks, *Safety Corners* to focus our employees on safety and *Functional Excellence Management (FEM) Boards* to publish production trends and engage all members of the Wittur team in the accomplishment of quality, production and safety targets.

Car and landing door for high rise applications

PEGASUS Skyline

1

Durable and reliable

Reliable and robust structure designed for high speed, high traffic elevator systems.

2

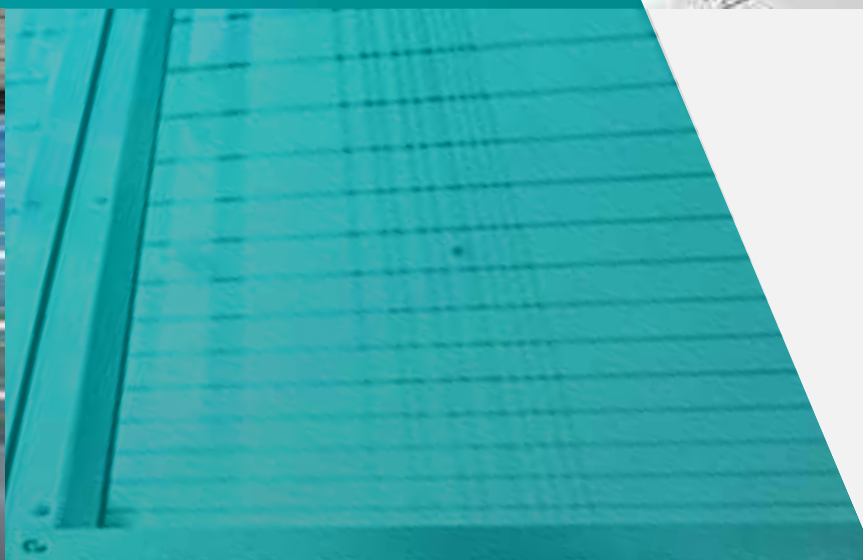
Fast and silent

Fast and silent door opening ("high performance rollers", fixed external counterweight, door lock mounted on roller bearings).

3

Design

A range of design solutions and options makes Pegasus Skyline an ideal choice for high speed installations: "Rush Hour" option adjusts door speed according to time of day; labyrinth on both door opening and closing side avoid air turbulence through the chinks.





4

Wide range of doors

Wittur Pegasus Skyline is available in a wide range of door types to fulfill any installation requirement, from single panel to 4-panel central opening.



5

Wide range of finishing and options

A variety of available finishes and options including stainless steel cladding, framed glass panels or a hidden sill make it easy to adapt Pegasus Skyline to any level of interior design.



6

Energy efficiency

The SUPRA brushless door drive, certified according to VDI 4707-2, can move heavy weight panels with low energy consumption per cycle.



Car and landing door for high rise applications

PEGASUS Skyline

Product range

Pos.	Landing doors		Car doors		C.O.* mm		C.H.* mm	
	Type	Illustration	Type	Illustration	Min.	Max.	Min.	Max.
Door with operator above	01/C		02/C		800	1400	2000	2800
	11/R		12/R		800	1400	2000	2800
	11/L		12/L					
	41/C		42/C		1400	1800	2000	2800
	71/R		72/R		800	1400	2000	2800
	71/L		72/L					

* Intermediate C.O. and C.H. are available in steps of 50 mm

Door Type	Sill Track Pack without Cover Plate (mm)
01 - 02	180
11 - 12	210
41 - 42	210
71 - 72	180

Door Type	Sill Track Pack with Cover Plate (mm)
01 - 02	180
11 - 12	270
41 - 42	270
71 - 72	180

Certifications

BASIC DIRECTIVES AND NORMS:

- EN 81-1 + A3:2009
- EN 81-2 + A3:2009
- EN 81-20/50
- European Lift Directive
- TP TC 011/2011
- GB 7588

FIRE AND ANTIVANDAL CERTIFICATIONS:

- EN 81-58
- BS 476
- EN 81-71

	Certification		PSK		PSK Framed glass	
			CO (mm)	CH (mm)	CO (mm)	CH (mm)
Europe	EN 81-58 EW 30'		CO (mm)	CH (mm)	CO (mm)	CH (mm)
	T01		800-1400	2000-2800	800-1400	2000-2500
	T11		800-1400	2000-2800	800-1400	2000-2500
	T41		1400-2000	2000-2800	1400-2000	2000-2500
	T71		800-1400	2000-2800		
	EN 81-58 E 60'		CO (mm)	CH (mm)	CO (mm)	CH (mm)
	T01		800-1400	2000-2800		
	T11		800-1400	2000-2800		
	T41		1400-2000	2000-2800		
	T71		800-1400	2000-2800		
	EN 81-58 E 90'		CO (mm)	CH (mm)	CO (mm)	CH (mm)
	T01		800-1400	2000-2800	800-1400	2000-2500
	T11		800-1400	2000-2800	800-1400	2000-2500
	T41		1400-2000	2000-2800	1400-2000	2000-2500
	T71		800-1400	2000-2800		
	EN 81-58 E 120'		CO (mm)	CH (mm)	CO (mm)	CH (mm)
	T01		800-1400	2000-2800		
	T11		800-1400	2000-2800		
	T41		1400-2000	2000-2800		
	T71		800-1400	2000-2800		
	EN 81-58 EI 60'		CO (mm)	CH (mm)	CO (mm)	CH (mm)
	T01		800-1400	2000-2800		
	T11		800-1400	2000-2800		
	T41		1400-2000	2000-2800		
	T71		800-1400	2000-2800		
	EN 81-58 EI 120'		CO (mm)	CH (mm)	CO (mm)	CH (mm)
	T01		800-1400	2000-2800		
	T11		800-1400	2000-2500		
	T41		1400-2000	2000-2500		
	T71		800-1400	2000-2500		

	Certification		PSK		PSK Framed glass	
			CO (mm)	CH (mm)	CO (mm)	CH (mm)
UK	BS 476-22 RE 120'		CO (mm)	CH (mm)	CO (mm)	CH (mm)
	T01		800-1400	2000-2300		
	T11		800-1400	2000-2300		
	T41		1400-2000	2000-2800		
	T71					
UK	BS 476-22 RE 60'		CO (mm)	CH (mm)	CO (mm)	CH (mm)
	T01				800-1100	2000-2100
	T11				800-1100	2000-2100
	T41				1400-2000	2000-2100
	T71					
DE	DIN 18091		CO (mm)	CH (mm)	CO (mm)	CH (mm)
	T01		800-1400	2000-2500		
	T11		800-1400	2000-2500		
	T41		1400-2000	2000-2500		
	T71					
Cat. 1*	EN 81-71		CO (mm)	CH (mm)	CO (mm)	CH (mm)
	T01		800-1400	2000-2600	800-1400	2000-2600
	T11		800-1400	2000-2600	800-1400	2000-2600
	T41					
	T71					
Cat. 2*	EN 81-71		CO (mm)	CH (mm)	CO (mm)	CH (mm)
	T01		800-1400	2000-2600		
	T11		800-1400	2000-2600		
	T41					
	T71		800-1100	2000-2600		

* for other dimensions and configurations please refer to Wittur.

NOTICE:

for other countries please refer to your local Wittur contact.

Pegasus high rise

Pegasus Skyline

Landing door features

Landing door	Medium $4\text{m/s} \leq \text{rated speed} < 6\text{m/s}$	
	Standard execution	Option
Door closing	Fixed external counterweight	Spring devices
DOM	-	available as option
Door panels	With Labyrinths and Runby	Double skin with noise insulation on not fire rated execution Fire rated executions
Apron	Galvanised	-
Lock roller	High performance	-
Shoes	High speed application design, not available for antivandal execution	-
Switch cover	IP20	IP54/IP67
Air and water seal	-	available as option
Antivandal execution	-	Category 1 & Category 2 [see certification table]
Hidden sill	-	Only for 01/C and 71/R-L not available for antivandal and fire rated execution
Prewiring	always available as standard execution	-
Mechanism cover plate	-	available as option

Landing door	High speed $\geq 6\text{m/s}$	
	Standard execution	Option
Door closing	Fixed external counterweight	Spring devices
DOM	-	available as option
Door panels	Double skin and Mineral wool on not fire rated execution (noise insulation) With Labyrinths and Runby	Fire rated executions
Apron	Galvanised	-
Lock roller	High performance	-
Shoes	High speed application design, not available for antivandal execution	-
Switch cover	IP20	IP54/IP67
Air and water seal	always available as standard execution	-
Antivandal execution	-	Category 1 & Category 2 [see certification table]
Hidden sill	-	Only for 01/C and 71/R-L not available for antivandal and fire rated execution
Prewiring	always available as standard execution	-
Mechanism cover plate	-	available as option



Car door features

Car door	Medium 4m/s ≤ rated speed < 6m/s		High speed ≥ 6m/s	
	Standard execution	Option	Standard execution	Option
Drive	SUPRA	-	SUPRA	-
Rollers	Reinforced; High performance	-	Reinforced; High performance	-
Coupler	HR configuration	-	HR configuration	-
Door Panels	With Runby	Double skin with noise insulation	Double skin with noise insulation	-
Car door lock	always available as standard execution	-	always available as standard execution	-
Evacuation rope	always available as standard execution	-	always available as standard execution	-
Passengers protective devices	WSE PLUS* prearrangement	-	WSE PLUS* prearrangement	-
Fixing	frontal with control box apart	on car roof	frontal with control box apart	on car roof
Air and water seal	-	available as option	always available as standard execution	-
Rush hour setting	-	available as option	-	available as option
Antivandal execution	-	Category 1 & Category 2 [see certification table]	-	Category 1 & Category 2 [see certification table]
Antipanic functionality	-	available as option	-	available as option
Hidden sill	-	Only for 02/C and 72/R-L (not available for antivandal execution)	-	Only for 02/C and 72/R-L (not available for antivandal execution)
Shoes	High speed application design, not available for antivandal execution	-	High speed application design, not available for antivandal execution	-
Retractable safety edge	-	available as option	-	available as option
Traction belt	Reinforced	-	Reinforced	-
Operator cover	-	available as option	-	available as option

* WSE = Wittur electronic Safety Edge

Car and landing door for high rise applications

Pegasus Skyline

Drive and finishes

DRIVE	Supra
Controller	VVVF Converter
Operating temperature range (shaft room temp.)	-20°C/+50°C
Operating temperature range (storage temp.)	-45°C/+70°C
Advanced opening	always available as standard execution
Self learning	always available as standard execution
Adjustment by PC	always available as standard execution
Supervision function	always available as standard execution
Data stored permanently	always available as standard execution
Nudging	always available as standard execution
Protective device	24V DC+10%/150mA
Emergency battery drive	18-26 VDC/max 15A
Average consumption	170W
Max consumption	900W
Power supply	(127V ; 6A) +/-20% (230V ; 4A) +/-20% 50/60Hz
Electromagnetic compatibility	immunity and emission protection acc. EN 12015/16
CAN OPEN™	always available as standard execution

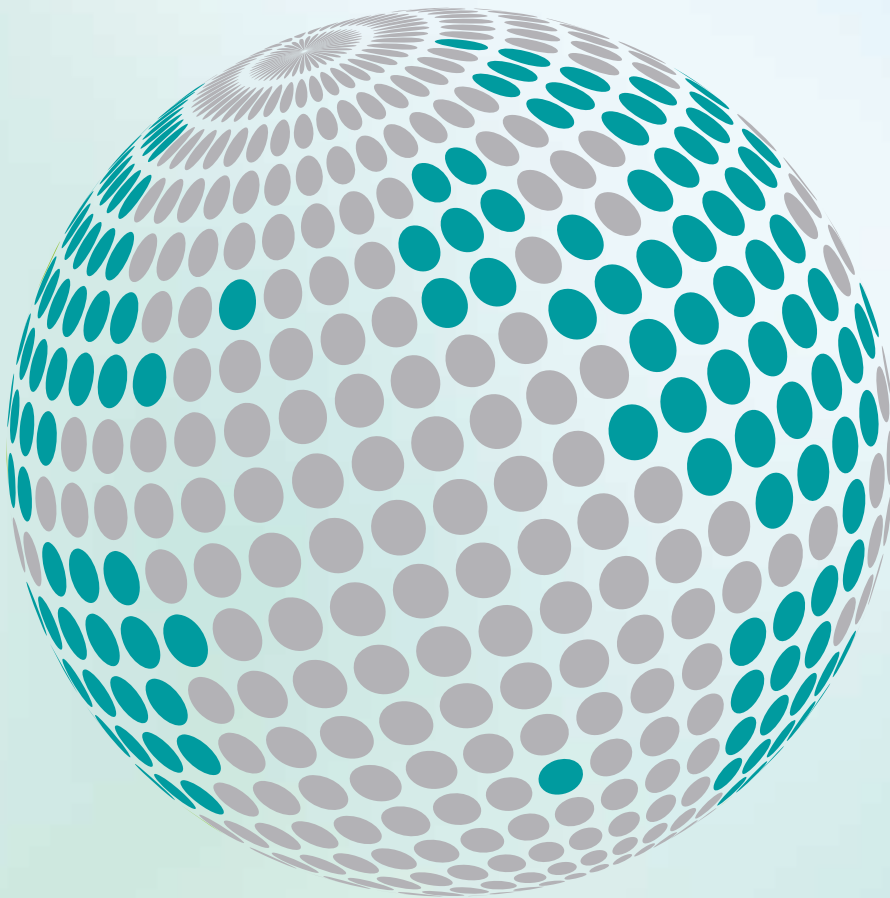


FINISHES	Standard execution	Option
Prime finish RAL 7032 painted	always available as standard execution	-
RAL painted	-	G14 table
Stainless Steel AISI 304 Brushed	-	available as option
Stainless Steel AISI 304 Scotch Brite	-	available as option
Stainless Steel AISI 304 Linen	-	available as option
Stainless Steel AISI 304 Leather	-	available as option
Other Cladding on demand	-	available as option





YOUR GLOBAL PARTNER FOR COMPONENTS,
MODULES AND SYSTEMS IN THE ELEVATOR INDUSTRY



safety **in** *motion*™

www.wittur.com

More information
about Wittur Group
available on-line.

