

# OL35-NA

Nummer/Code **TC.7.000537.DE**

Stand/Version **E**

Datum/Date **01.03.2021**

## GESCHWINDIGKEITSBEGRENZER OVERSPEED GOVERNOR



safety in motion™

No part of this publication may be reproduced or translated, even in part, without prior written permission from WITTUR.

Subject to change without notice!

Nachdruck, Übersetzung und Vervielfältigung in jeglicher Form, auch auszugsweise, bedürfen der schriftlichen Genehmigung von WITTUR.

Änderungen vorbehalten!

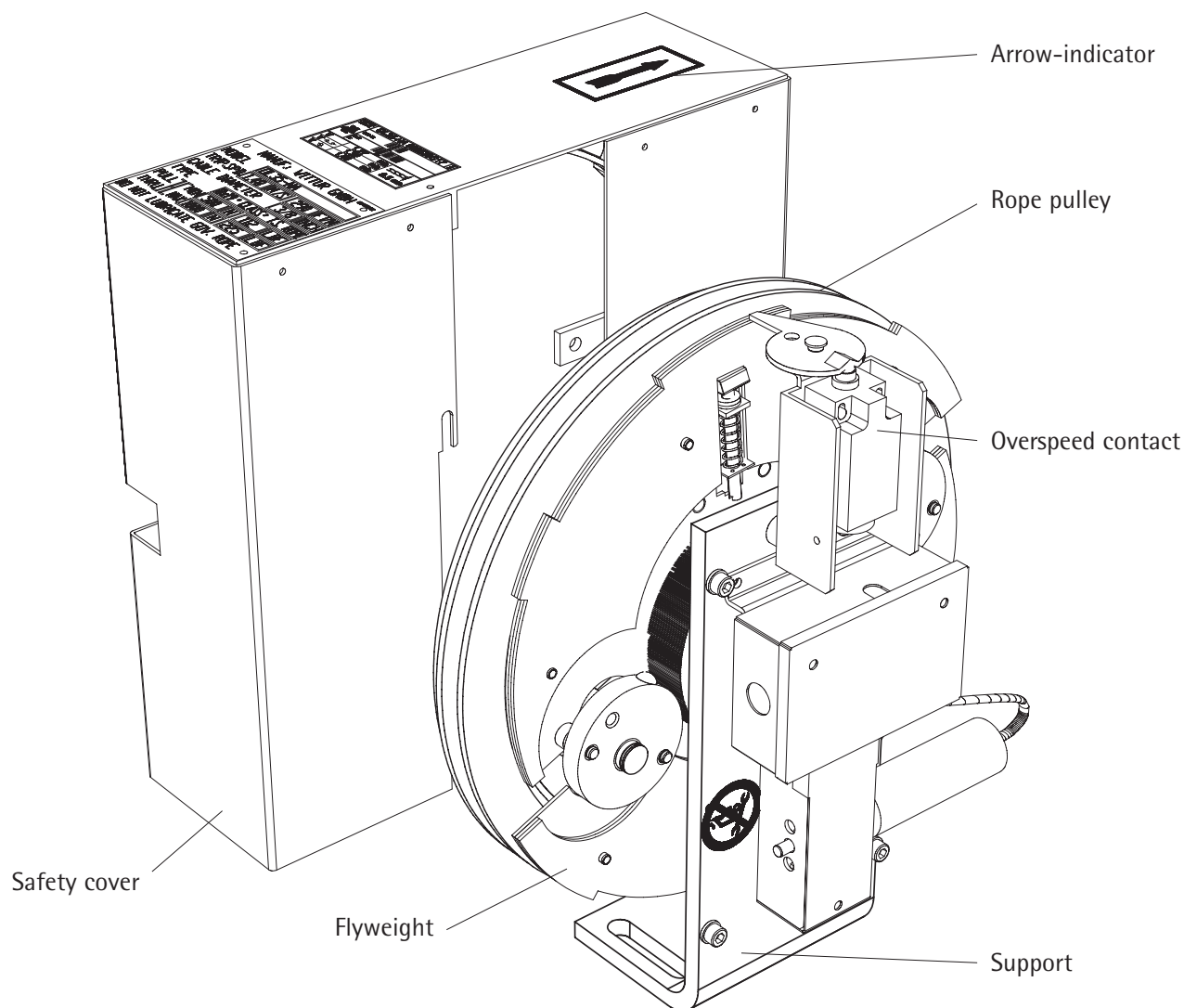
info@wittur.com  
www.wittur.com

© Copyright WITTUR 2016

# OL35-NA NORTH AMERICA OVERSPEED GOVERNOR

Blatt/sheet D700CDEGB.2  
Datum/date 15.10.2002  
Stand/version D-11.03.2014  
Geprüft/approved WAT/KKr

## 1 Description



The Overspeed governor OL35-NA is a safety component which is activated when the maximum rated speed of the car is passed.

The OL35-NA has a bi-directional electrical protection and a single-directional mechanical release.

If the car frame exceeds the max. nominal speed and reaches the tripping speed, the overspeed governor intervenes and activates the safety gear through the governor rope. The car frame is stopped and held on to the guide rails.



OL35-NA  
NORTH AMERICA  
OVERSPEED GOVERNOR

Blatt/sheet D700CDEGB.3  
Datum/date 15.10.2002  
Stand/version E-01.03.2021  
Geprüft/approved WAT/KKr

## 2 Range of use

### 2.1 Approval

The OL35-NA can be used in elevators according ASME-A17.1(California State Approval No.: 4695)/CSA B44 .

### 2.2 Operation data

|   | OL35-NA  |   |
|---|--|---|
| rated speed   | 0.51 m/s ... 2.54 m/s<br>100 ft/min ... 500 ft/min       | 1.02 m/s<br>200 ft/min                                  |
| rope pulley diameter  | 306 mm<br>12"  | 200 / 203 mm<br>8"                                      |
| rope diameter   | 6 / 9,5 mm<br>0.236 / 0.375"                             | 6 / 6,5 mm<br>0.236 / 0.256"                            |
| hardened pulley groove                                      | No   |   |
| brake force of the overspeed governor                       | min. 500N ... max. 1000N<br>min. 112lbf ... max. 225lbf  | min. 600N ... max. 1000N<br>min. 135lbf ... max. 225lbf |
| tension force of the governor                               | min. 250 N ... max. 350 N<br>min. 56 lbf ... max. 79 lbf | min. 300N ... max. 350N<br>min. 67lbf ... max. 79lbf    |
| max. travel height  | 75m<br>246'  | 30m<br>98,5'  |
| max. distance between overspeed governor and tension weight | 80m<br>262.5'  | 36m<br>118'   |
| remote tripping and reset                                   | optional'  | Yes'  |
| encoder   | see chapter 4.4.   | No  |
| environmental enclosure rating - IEC                        | IP2x   |   |
| operating temperature                                       | -5°C ... +55°C<br>+23°F ... +131°F                       |   |
| storage temperature   | -40°C ... +70°C<br>-40°F ... +158°F                      |   |
| air humidity  | <98% / 40°C<br><98% / 104°F                              |   |

## 2.3 Type general view

| acc. to ASME A-17.1          |                              |                              |                               |                                    |                              |                              |                               |
|------------------------------|------------------------------|------------------------------|-------------------------------|------------------------------------|------------------------------|------------------------------|-------------------------------|
| valid for 306mm rope pulleys |                              |                              |                               | valid for 200/203mm rope pulleys   |                              |                              |                               |
| Application                  | Nominal speed<br>NS [ft/min] | Contact speed<br>CS [ft/min] | Tripping speed<br>TS [ft/min] | Application                        | Nominal speed<br>NS [ft/min] | Contact speed<br>CS [ft/min] | Tripping speed<br>TS [ft/min] |
| CAR<br>CWT                   | 100                          | 130,0<br>143,0               | 140,0<br>154,0                | CAR<br>CWT                         | 200                          | 250<br>not available         | 280<br>not available          |
| CAR<br>CWT                   | 150                          | 195,0<br>214,5               | 210,0<br>231,0                | CAR Car frame<br>CWT Counterweight |                              |                              |                               |
| CAR<br>CWT                   | 200                          | 229,4<br>252,3               | 255,0<br>280,5                |                                    |                              |                              |                               |
| CAR<br>CWT                   | 300                          | 337,5<br>371,3               | 375,0<br>412,5                |                                    |                              |                              |                               |
| CAR<br>CWT                   | 350                          | 393,8<br>433,1               | 437,5<br>481,3                |                                    |                              |                              |                               |
| CAR<br>CWT                   | 500                          | 553,5<br>608,9               | 615,0<br>676,5                |                                    |                              |                              |                               |

$$CS_{CWT} = 1,1 \times CS_{CAR}$$

$$TS_{CWT} = 1,1 \times TS_{CAR}$$

Adjustment tolerances:

CS -5%/+0% TS -5%/+0%

Contact speed CS: (for car side valid only)

$CS \leq 1,0 \times TS$  for  $NS \leq 150$  ft/min (0,762 m/s)

$CS \leq 0,9 \times TS$  for  $NS > 150$  ft/min (0,762 m/s)



If the nominal speed is not given in the table, the formulas below are valid for the adjusted contact and tripping speed. Please contact us, if other then the calculated values for CS and TS are needed.

Formula for optional adjustment:

|                | car frame<br>CAR                                 |
|----------------|--|
| Tripping speed | $TS = 1,40 \times NS$ ( $NS \leq 157,5$ ft/min)  |
|                | $TS = 1,275 \times NS$ ( $NS \leq 246,1$ ft/min) |
|                | $TS = 1,25 \times NS$ ( $NS \leq 423,2$ ft/min)  |
|                | $TS = 1,241 \times NS$ ( $NS \leq 492,1$ ft/min) |
|                | $TS = 1,23 \times NS$ ( $NS \leq 500$ ft/min)    |
| Contact speed  | $CS = 1,30 \times NS$ ( $NS \leq 157,5$ ft/min)  |
|                | $CS = 1,147 \times NS$ ( $NS \leq 246,1$ ft/min) |
|                | $CS = 1,125 \times NS$ ( $NS \leq 492,1$ ft/min) |
|                | $CS = 1,107 \times NS$ ( $NS \leq 500,0$ ft/min) |



---

OL35-NA  
NORTH AMERICA  
OVERSPEED GOVERNOR

---

Blatt/sheet D700CDEGB.5  
Datum/date 15.10.2002  
Stand/version B-07.04.2004  
Geprüft/approved WAT/KKr

## 2.4 Function

The basic functions of the overspeed governor are to detect overspeed mechanically and electrically:

- to stop the elevator drive electrically (the overspeed governor is equipped with overspeed contact)
- to activate the safety gear mechanically

### **Tripping direction:**

Tripping right, Tripping left (according to Layout)

### **Lifetime:**

- max. 250 turns with max. 15 turns per test, if more than 10 turns per test, the governor (brake) must cool off for 30 minutes minimum

A tension weight is needed to tighten the rope of the overspeed governor.

### **Response time**



The response time of the overspeed governor before tripping is very short because the governor trips at any point over 360°..



OL35-NA  
NORTH AMERICA  
OVERSPEED GOVERNOR

Blatt/sheet D700CDEGB.6  
Datum/date 15.10.2002  
Stand/version E-01.03.2021  
Geprüft/approved WAT/KKr

Product environment

- Max. allowed forces applied to the governor:

|                 |                |              |                        |
|-----------------|----------------|--------------|------------------------|
| pulley diameter | 12" (306mm)    |              | 8" (200mm)             |
| rope diameter   | 3/8" (9,5mm)   | 0.236" (6mm) | 0.236/0.256" (6/6.5mm) |
| tension weight  | 79lbf (350N)   |              |                        |
| rope weight     | 146lbf (650N)  | 67lbf (300N) | 30lbf (135N)           |
| brake force     | 225lbf (1000N) |              |                        |

- Tension weight:  
vertically guided or swing arm (including safety switch,  
manual reset type)

|                     |              |              |
|---------------------|--------------|--------------|
| pulley diameter     | 12" (306mm)  | 8" (200mm)   |
| min. tension weight | 56lbf (250N) | 67lbf (300N) |
| max. tension weight | 79lbf (350N) | 79lbf (350N) |

- Rope:  
The Overspeed governor shall be driven by a steel wire  
rope designed for that purpose.

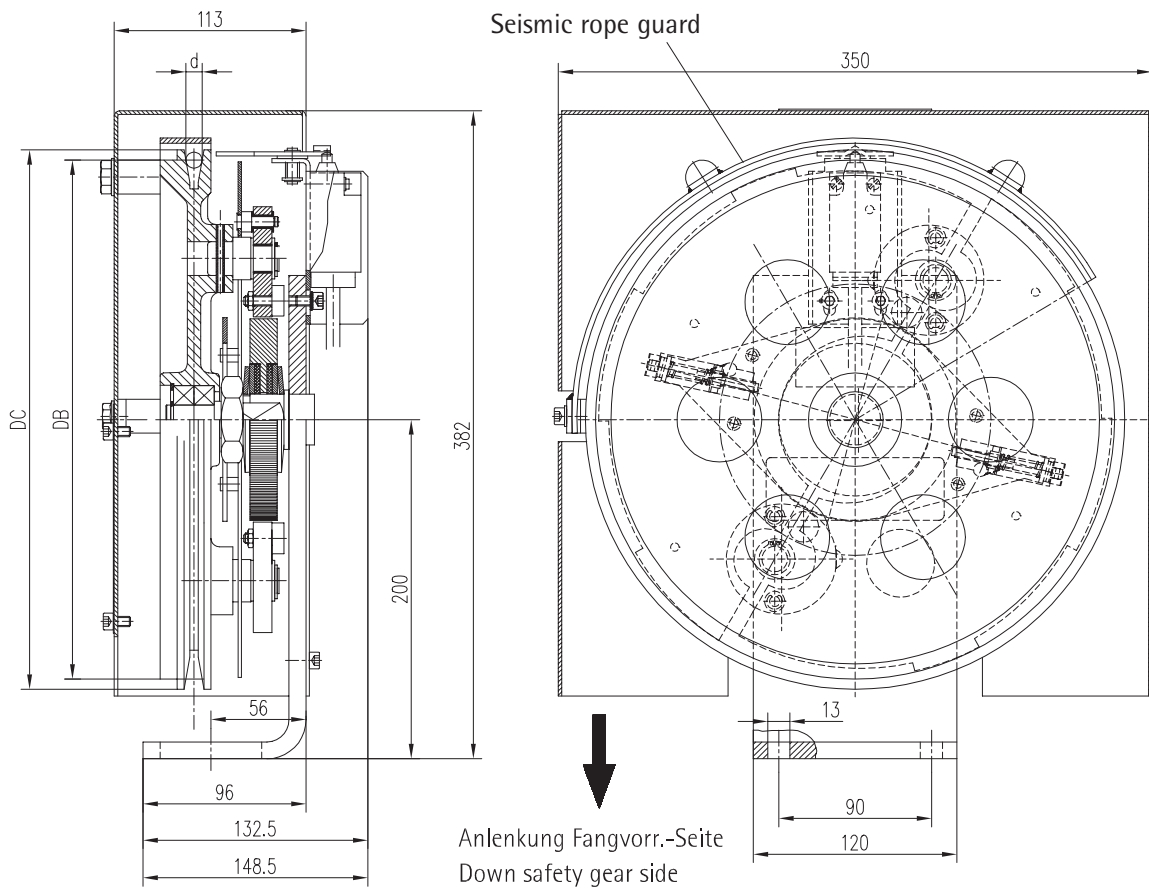
|                             |                          |                 |                            |
|-----------------------------|--------------------------|-----------------|----------------------------|
| pulley diameter             | 306mm (12")              |                 | 200mm (8")                 |
| nominal rope diameter       | 0.236"<br>(6mm)          | 3/8"<br>(9,5mm) | 0.236/0.256"<br>(6/6,5 mm) |
| min. number of rope strands | 6                        | 8               | 8                          |
| min. breaking load of rope  | 3665lbf (16300N)         |                 |                            |
| rope type                   | fibre core or full steel |                 |                            |

- Rope data:  
GW-steel wire to DIN EN 12385-5  
Tensile grade min. 1570 N/mm<sup>2</sup> & max 1770 N/mm<sup>2</sup>  
or better quality

### 3 Project engineering and assembly


#### 3.1 Dimensions of governors without encoder

Valid for overspeed governors with 12" rope pulley.



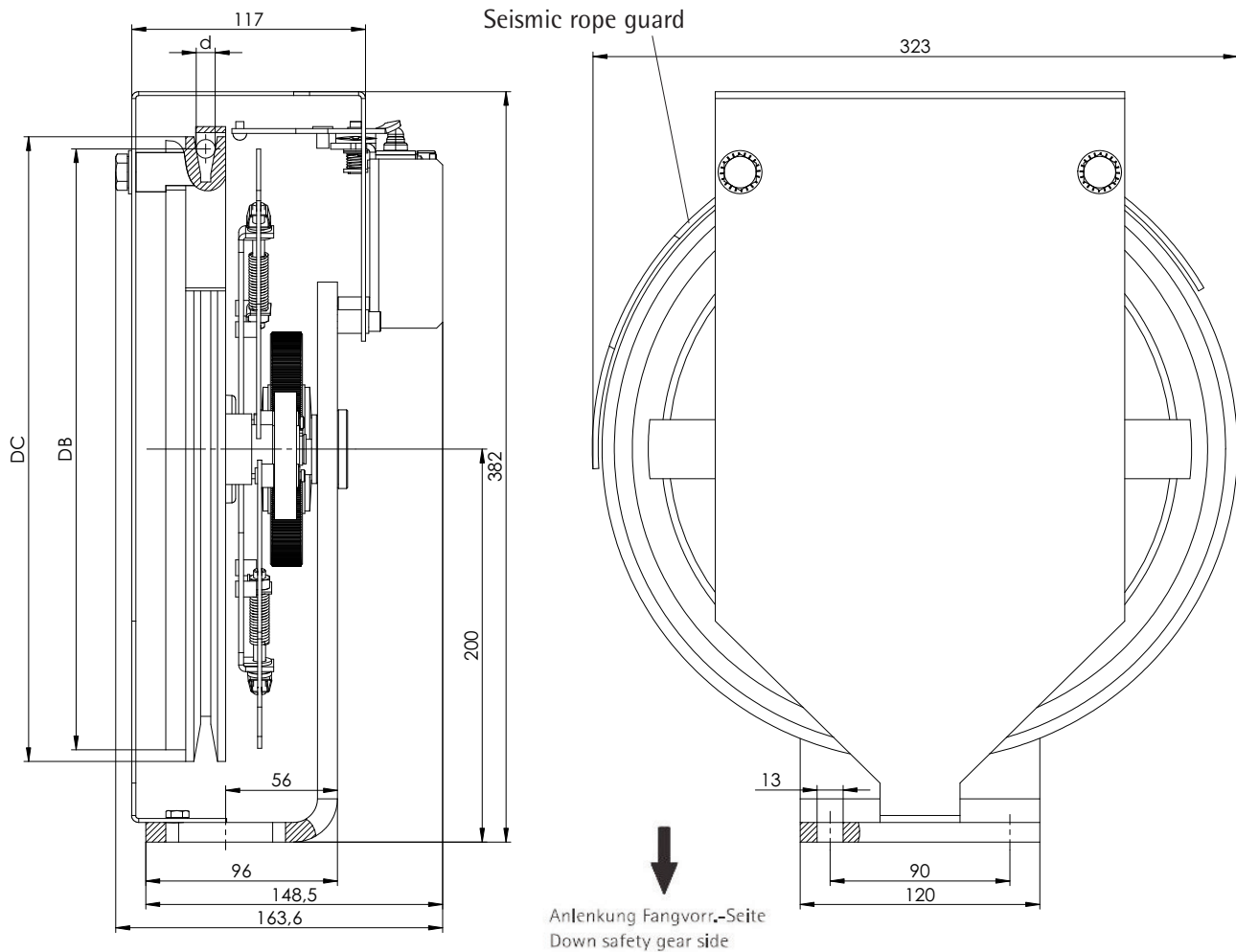
| d            | DB          | DC              |
|--------------|-------------|-----------------|
| 0.236" (6mm) | 12" (306mm) | 12 1/2" (318mm) |
| 3/8" (9.5mm) | 12" (306mm) | 12 1/2" (318mm) |

d diameter of the rope  
DB Nominal diameter of the drive groove for the governor rope  
DC Outside diameter of the pulley

 Picture shows function direction "tripping left"  
"tripping right" is the mirror image.

### 3.1.1 Optional "partly enclosed cover" type 604289G01/G02

This cover is typically used for machine room less applications.



| d            | DB          | DC              |
|--------------|-------------|-----------------|
| 0.236" (6mm) | 12" (306mm) | 12 1/2" (318mm) |
| 3/8" (9.5mm) | 12" (306mm) | 12 1/2" (318mm) |

d diameter of the rope  
DB Nominal diameter of the drive groove for the governor rope  
DC Outside diameter of the pulley

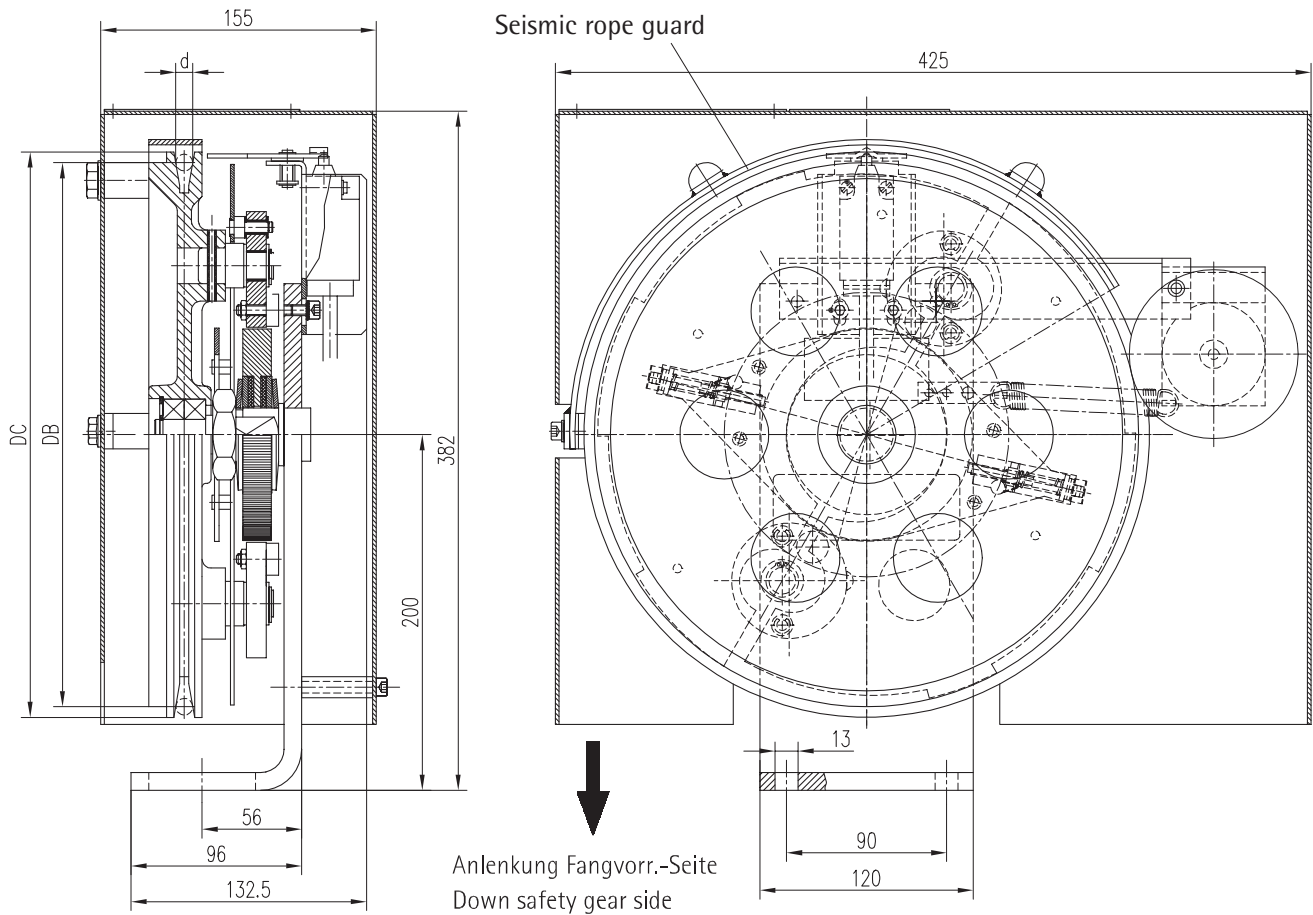


Picture shows function direction "tripping left"  
"tripping right" is the mirror image.  
604289G01 for "tripping right"  
604289G02 for "tripping left"




### 3.2 Dimensions of governors with side-mounted friction-type encoder (encoder type 602258G01)

Valid for overspeed governors with 12" rope pulley.



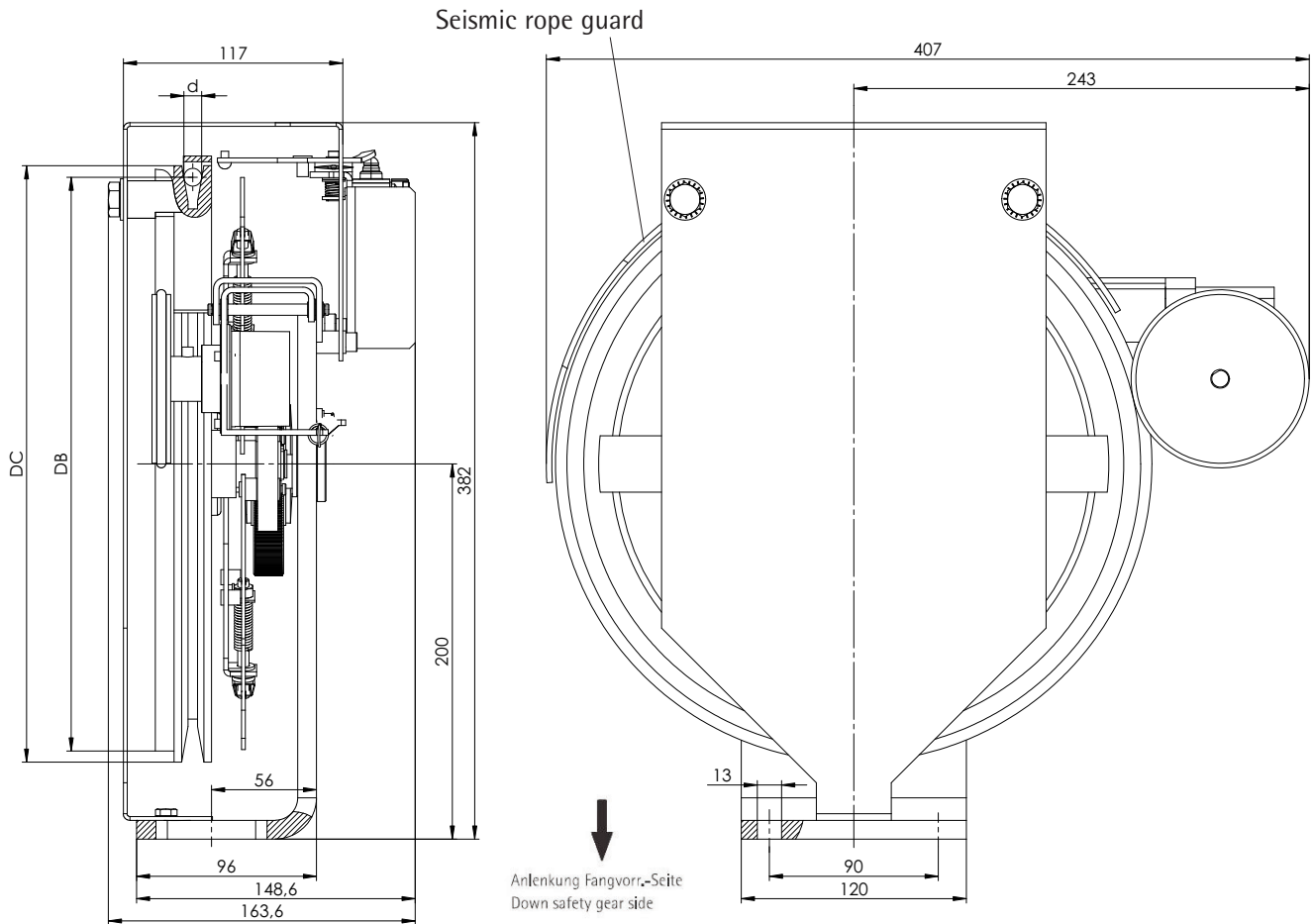
| d            | DB          | DC              |
|--------------|-------------|-----------------|
| 0.236" (6mm) | 12" (306mm) | 12 1/2" (318mm) |
| 3/8" (9.5mm) | 12" (306mm) | 12 1/2" (318mm) |

d diameter of the rope  
DB Nominal diameter of the drive groove for the governor rope  
DC Outside diameter of the pulley

 Picture shows function direction "tripping left"  
"tripping right" is the mirror image.

### 3.2.1 Optional "partly enclosed cover" type 604289G01/G02

This cover is typically used for machine room less applications.



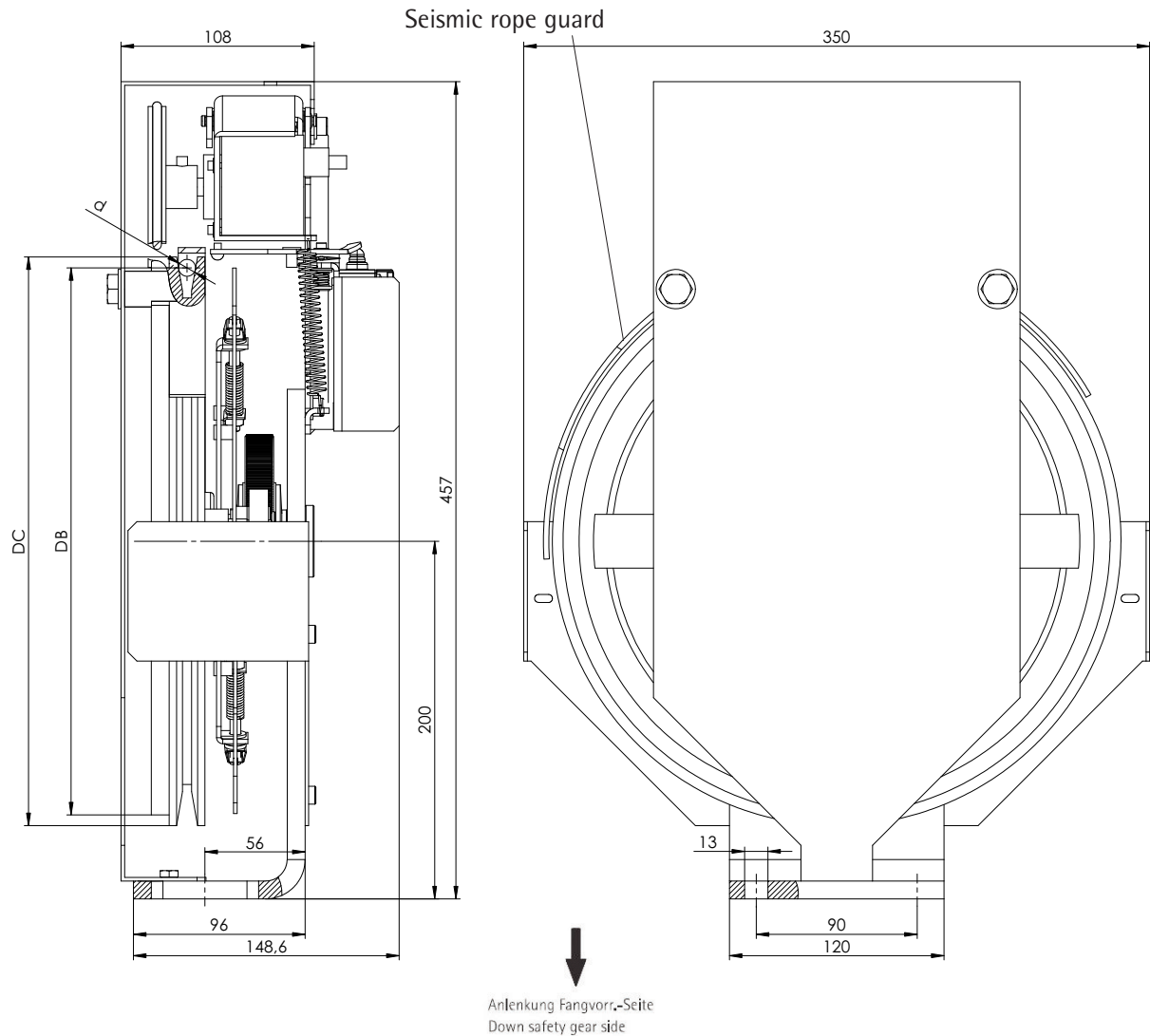
| d            | DB          | DC              |
|--------------|-------------|-----------------|
| 0.236" (6mm) | 12" (306mm) | 12 1/2" (318mm) |
| 3/8" (9.5mm) | 12" (306mm) | 12 1/2" (318mm) |

d diameter of the rope  
DB Nominal diameter of the drive groove for the governor rope  
DC Outside diameter of the pulley

Picture shows function direction "tripping left"  
"tripping right" is the mirror image.  
604289G01 for "tripping right"  
604289G02 for "Auslösung links"

### 3.3 Dimensions of governors with top-mounted friction-type encoder (encoder type 602258G07)

Valid for overspeed governors with 12" rope pulley.  
This cover is typically used for machine room less applications



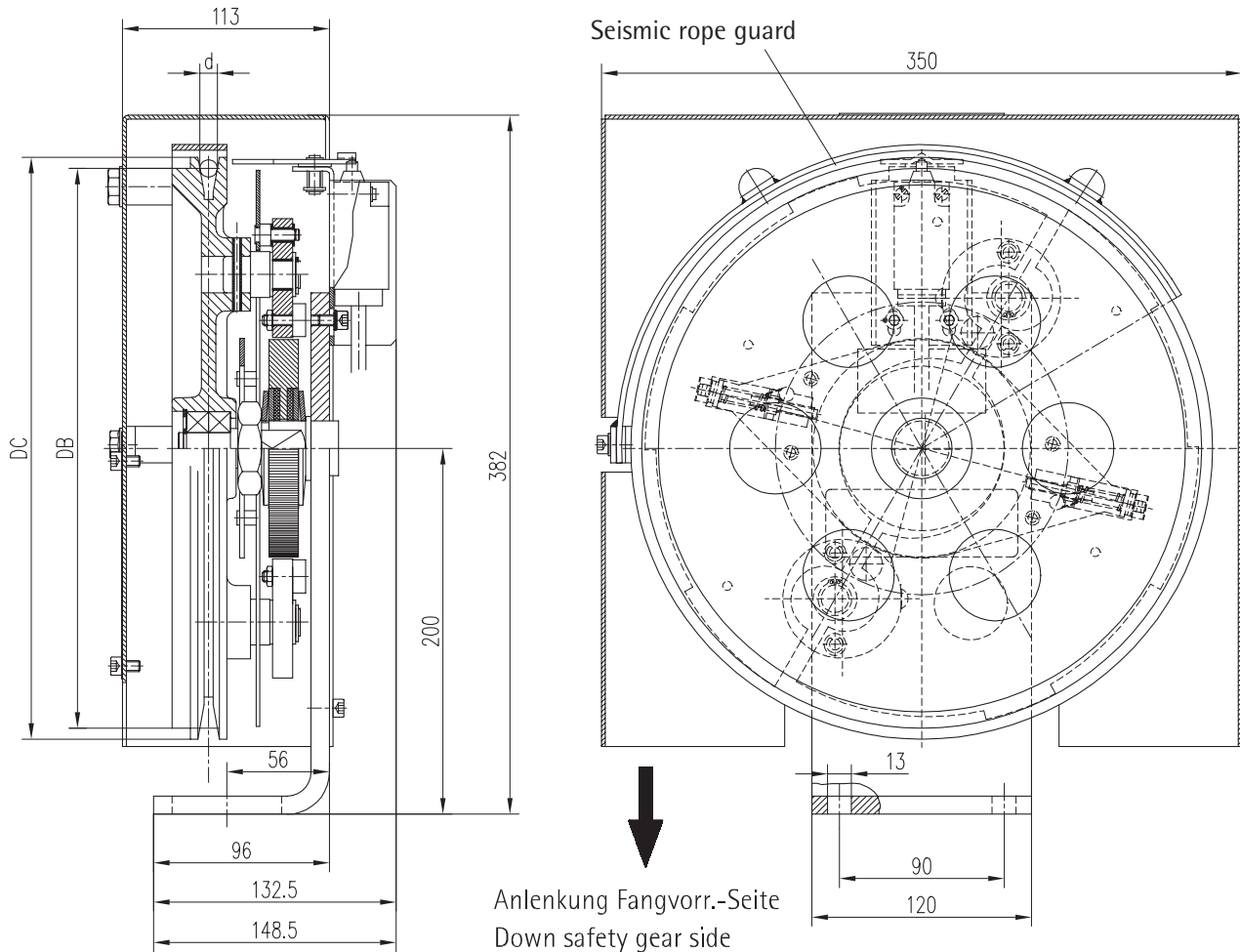
| d            | DB          | DC              |
|--------------|-------------|-----------------|
| 0.236" (6mm) | 12" (306mm) | 12 1/2" (318mm) |
| 3/8" (9.5mm) | 12" (306mm) | 12 1/2" (318mm) |

d diameter of the rope  
DB Nominal diameter of the drive groove for the governor rope  
DC Outside diameter of the pulley

Picture shows function direction "tripping left"  
"tripping right" is the mirror image.  
604289G05 for "tripping right"  
604289G06 for "tripping left"


### 3.4 Dimensions of governors with magnet-ring encoder (encoder type 900897G01)

Valid for overspeed governors with 12" rope pulley.



| d            | DB          | DC              |
|--------------|-------------|-----------------|
| 0.236" (6mm) | 12" (306mm) | 12 1/2" (318mm) |
| 3/8" (9.5mm) | 12" (306mm) | 12 1/2" (318mm) |

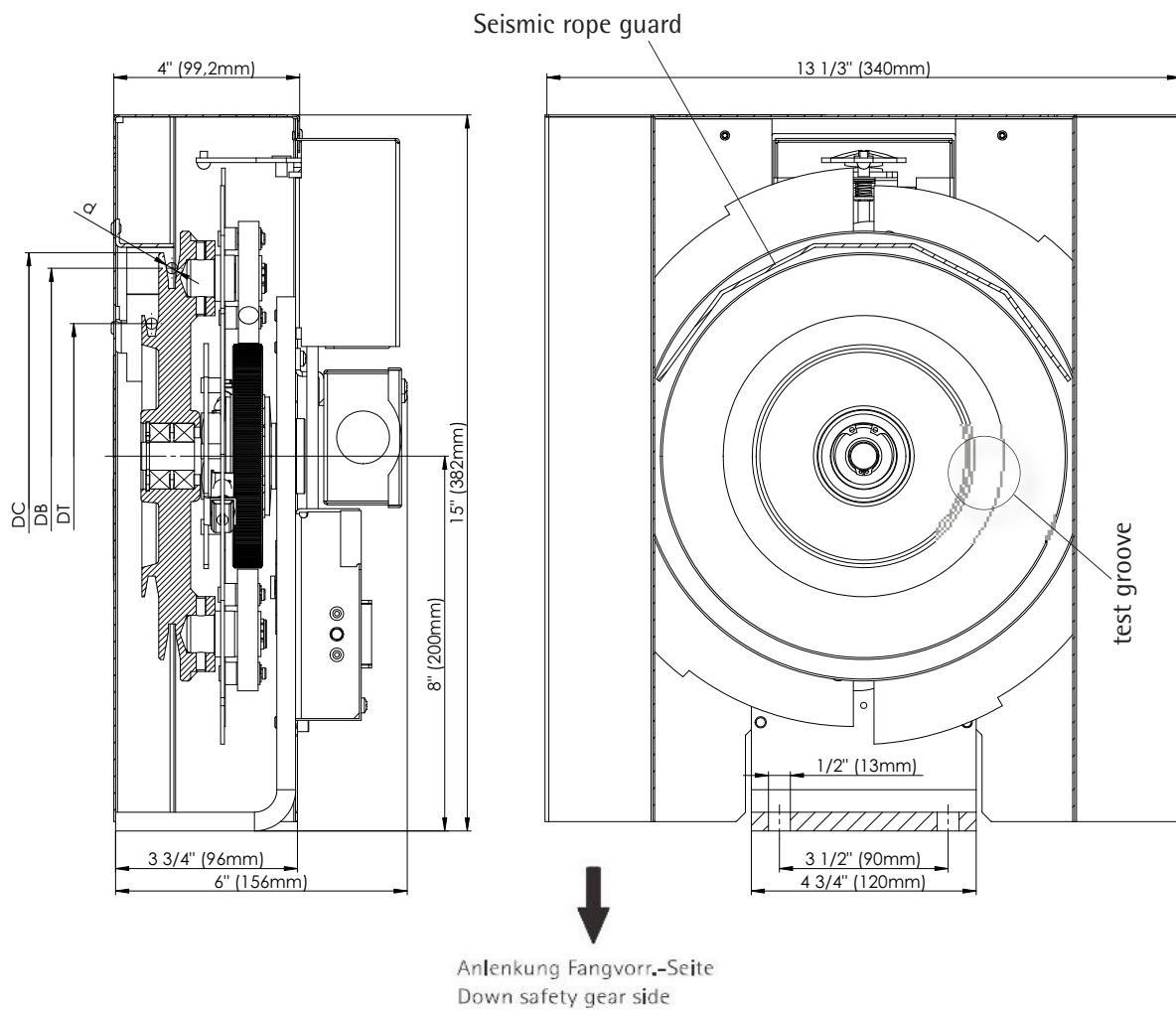
d diameter of the rope  
DB Nominal diameter of the drive groove for the governor rope  
DC Outside diameter of the pulley

 Picture shows function direction "tripping left"  
"tripping right" is the mirror image.

### 3.5 Dimensions of governors with 8" rope pulley

Valid for overspeed governors with 8" rope pulley only.

The pulley type is equipped with a test groove. Because of the smaller diameter of the groove, the overspeed contact can be tested at rated speed.



| d              | DB               | DC               | DT               |
|----------------|------------------|------------------|------------------|
| 0.236" (6mm)   | 8 21/24" (200mm) | 8 35/64" (217mm) | 5 36/64" (141mm) |
| 0.256" (6.5mm) | 8" (203mm)       | 8 35/64" (217mm) | 5 43/64" (144mm) |



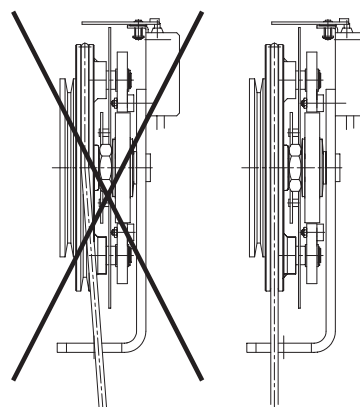
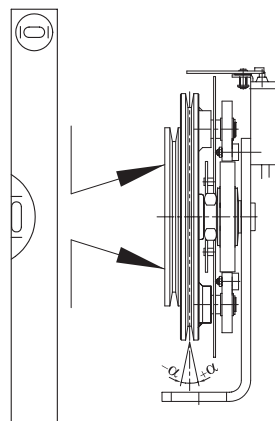
Picture shows function direction "tripping left"  
"tripping right" is the mirror image.  
Same cover for both tripping directions..

d diameter of the rope  
DB Nominal diameter of the drive groove for the governor rope  
DC Outside diameter of the pulley  
DT Nominal diameter of the test groove

### 3.6 Fixing method OL35

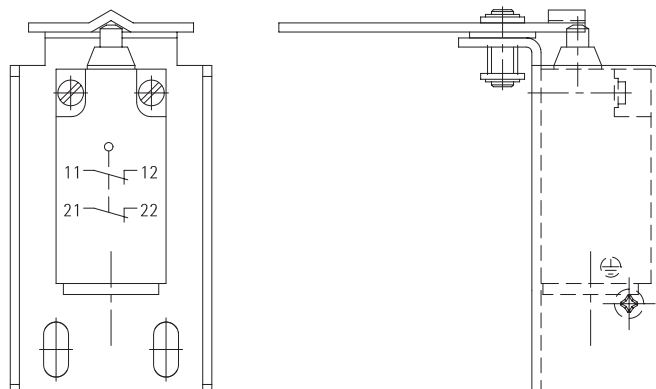
#### Installation tolerances:

- The overspeed governor must be installed vertically.
- The overspeed governor must be installed in a way, that the governor rope runs parallel into the pulley groove.
- The maximum recommended declination ( $\alpha$ ) of the rope is  $\pm 1^\circ$



### 3.7 Overspeed contact

- use category: AC 15, B300,  $U_e/I_e$  240V (1,5A)
- thermal current:  $I_{the} = 5A$
- insulation voltage:  $U_i = 400V$  AC
- protection type: IP 54
- approved in accordance: VDE 0470  
IEC/EN 60947-5-1



#### 4 Accessories

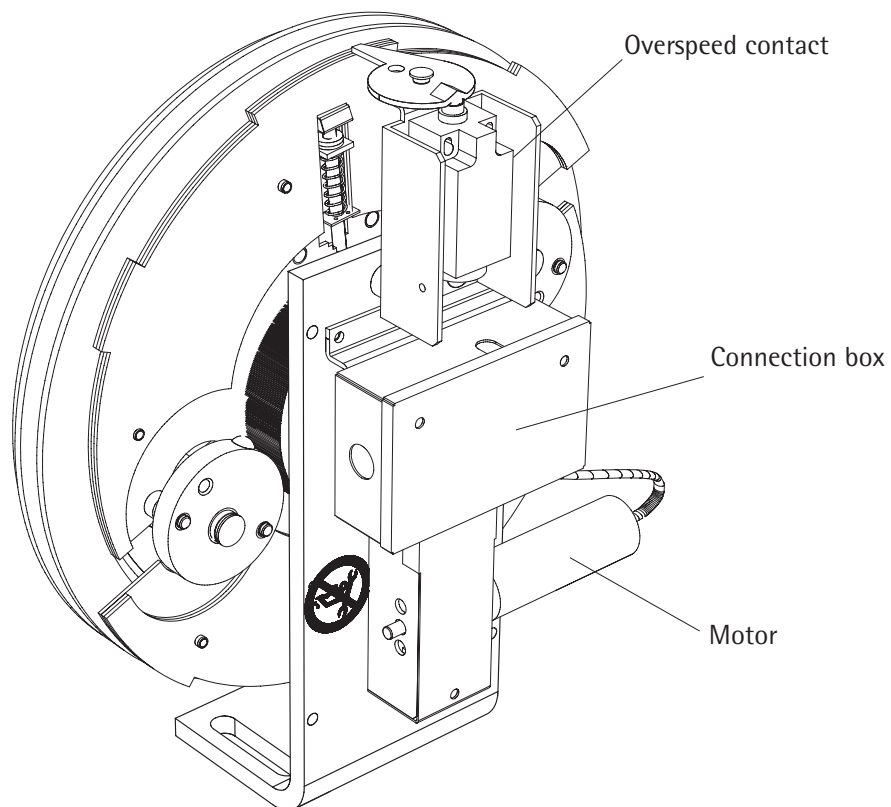
##### 4.1 Safety cover

A overspeed governor safety cover is in the delivery content (obligatory in America).



The safety cover includes also a rope guard which prevents that the rope can fall off the pulley ..

##### 4.2 Remote Control



The general purposes of the product are:

- Testing of overspeed governor
- Check of safety gear
- Stopping of elevator below tripping speed by operating the overspeed governor and the safety gear.

For cars and counterweights:

- function direction: turning right, or turning left

The remote control is fixed and adjusted at manufacturer.

#### 4.2.1 Range of use

##### 4.2.1.1 Approval

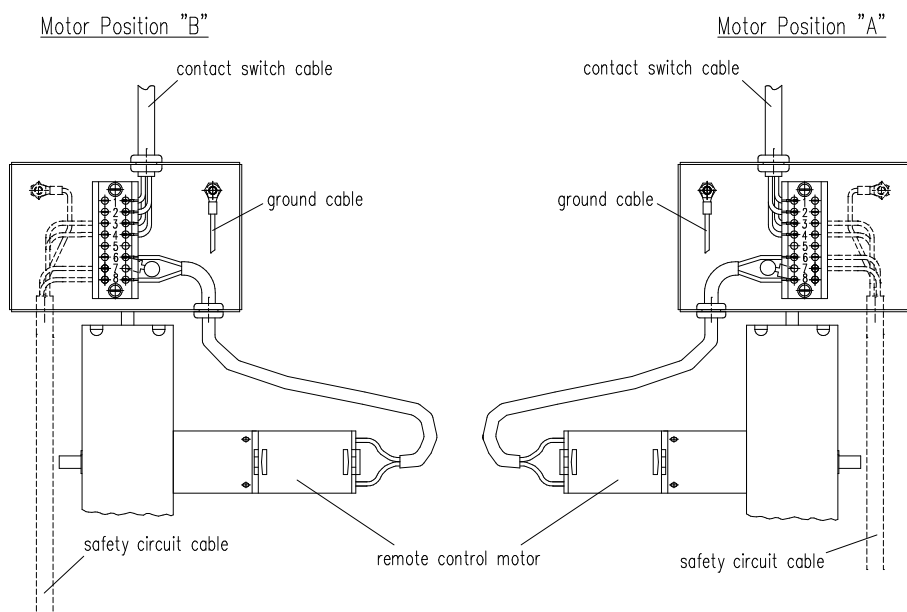
Expert opinion from Austrian TÜV which declares that remote control doesn't impair the normal functioning of the overspeed governor.

The motor is CSA approved.

##### 4.2.1.2 Operating data

| Powersupply of motor |                               |
|----------------------|-------------------------------|
| Voltage              | 24VDC + 10/-15%               |
| Current              | 0.9 - 1.5A                    |
| switch-on time       | min.: 2 sec.<br>max.: 30 sec. |

##### 4.2.1.3 Connection plan of connection box (safety circuit + motor)







OL35-NA  
NORTH AMERICA  
OVERSPEED GOVERNOR

Blatt/sheet D700CDEGB.17  
Datum/date 15.10.2002  
Stand/version E-01.03.2021  
Geprüft/approved WAT/KKr

**Delivery content:**

The overspeed governor is delivered with pre-wired connection box, if used with remote control.

Connection from control panel to remote control:

| Motor Position<br>B | Motor Position<br>A | <i>remote control motor</i> |                     |
|---------------------|---------------------|-----------------------------|---------------------|
| Pin                 | Pin                 | Fang / trips                | Rücksetzen / resets |
| 7                   | 6                   | +24 VDC                     | GND                 |
| 8                   | 7                   | GND                         | +24 VDC             |

Motor protection

The motor protection (PTC) is included in the connection box of the remote control

- response time for the motor protection:  
typical: 5 sec, max. 30 sec
- recovery time for the motor protection:  
min. 120 sec

Function

- to trip the overspeed governor when the car is running downwards with nominal or service speed
- to reset the overspeed governor safety switch after tripping

Operation

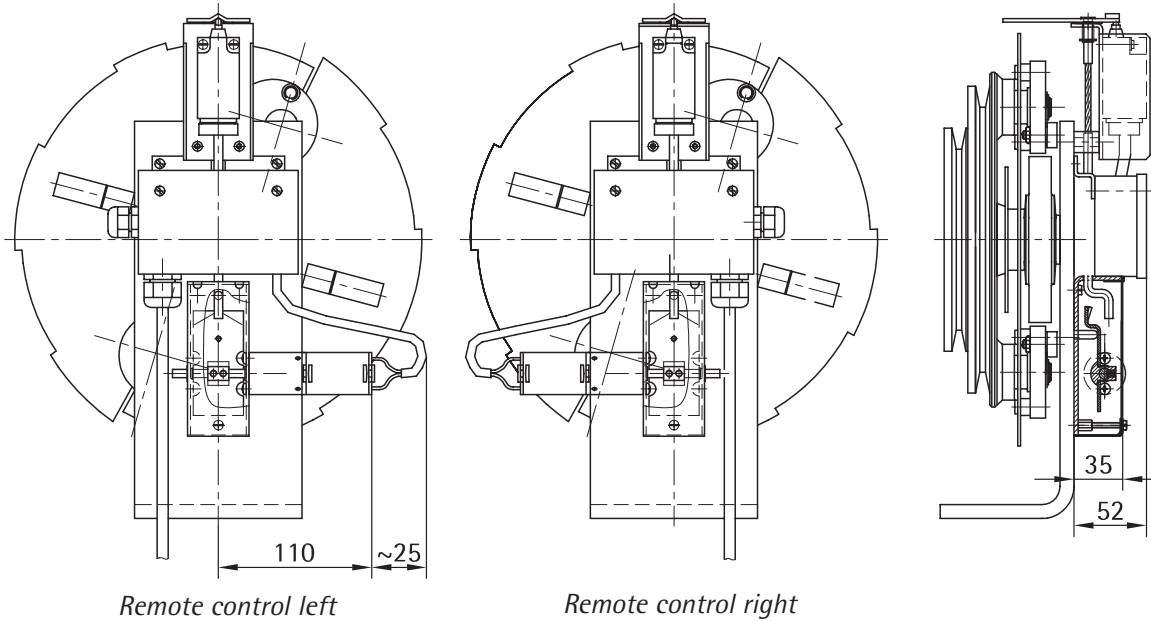
Current operates the electric-motor and makes the overspeed governor trip.

Without current the motor is in "waiting position" due to a spring force.

Connection from control panel to remote control

The control panes should be able to operate the motor in both directions for the specified time.

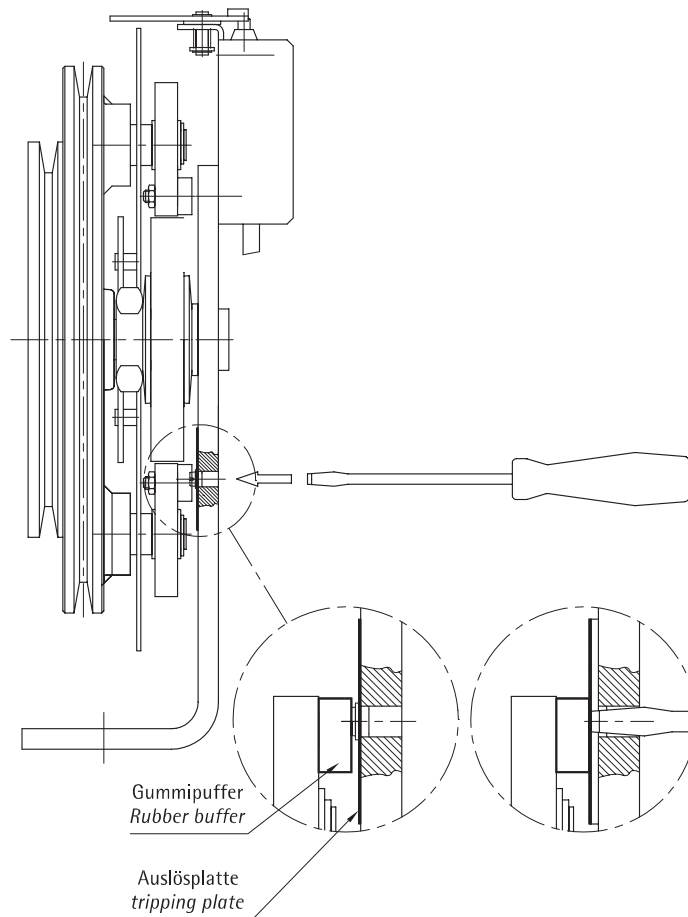
#### 4.2.1.4 Dimensions



#### 4.2.1.5 contents of delivery

- Motor and mechanical linkages
- Connection box
- Safety cover

#### 4.3 Manual test tripping device



The general purposes of the product are:


- Testing of overspeed governor
- Check of safety gear
- Stopping of elevator below tripping speed by operating the overspeed governor and the safety gear.

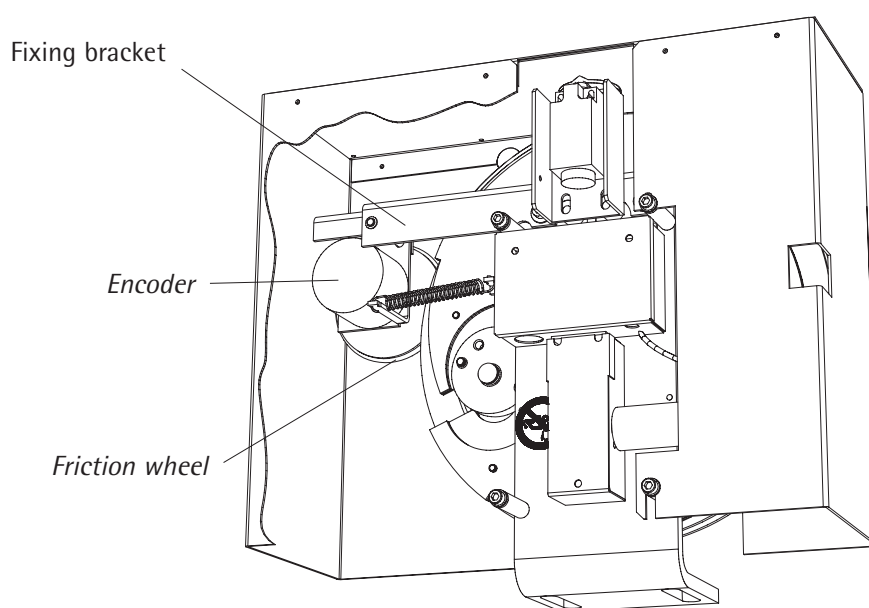
For cars and counterweights

#### 4.4 Encoder

##### 4.4.1 Side-mounted friction-type encoder 602258G01 (only available for 12" rope pulley)

The friction wheel actuated encoder is used for measuring the accurate car position.

 The signal may be used **only as reference** to another available source.



#### specification

| type          | power supply | axle forces (appl.)          | accuracy                    |
|---------------|--------------|------------------------------|-----------------------------|
| Kuebler A3192 | 10 .. 30 VDC | axial: 50 N<br>radial: 100 N | 0.8377<br>(250 pulses/rev.) |


#### wiring assignment

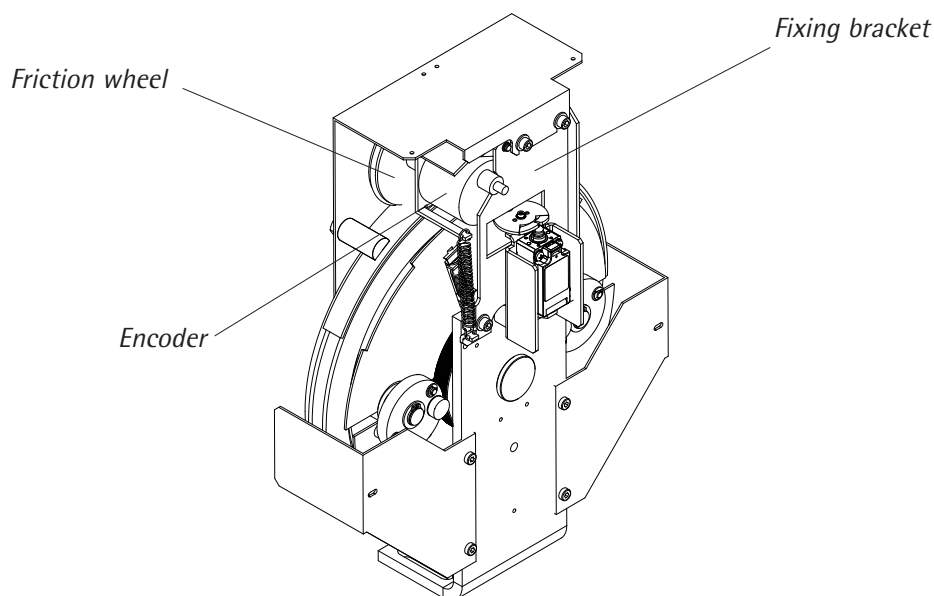
The encoder is delivered with 13m cable (without plug).

|             |             |           |                   |           |                   |           |                   |       |               |
|-------------|-------------|-----------|-------------------|-----------|-------------------|-----------|-------------------|-------|---------------|
| red         | yellow /red | white     | white /brown      | green     | green /brown      | yellow    | yellow /brown     | black | yellow /black |
| 10...30 VDC | Sense Vcc   | channel A | channel inverse A | channel B | channel inverse B | channel N | channel inverse N | GND   | Alarm         |

#### 4.4.2 top-mounted friction-type encoder 602258G07 (only available for 12" rope pulley)

The friction wheel actuated encoder is used for measuring the accurate car position.

 The signal may be used **only as reference** to another available source.



#### spezification

| type          | power supply | axle forces (appl.)          | accuracy                    |
|---------------|--------------|------------------------------|-----------------------------|
| Kuebler A3192 | 10 .. 30 VDC | axial: 50 N<br>radial: 100 N | 0.8377<br>(250 pulses/rev.) |


#### wiring assignment

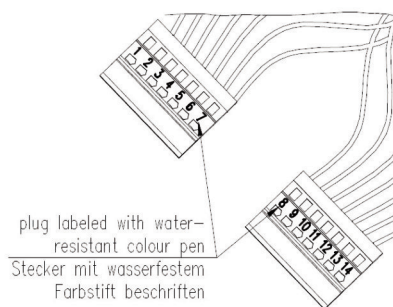
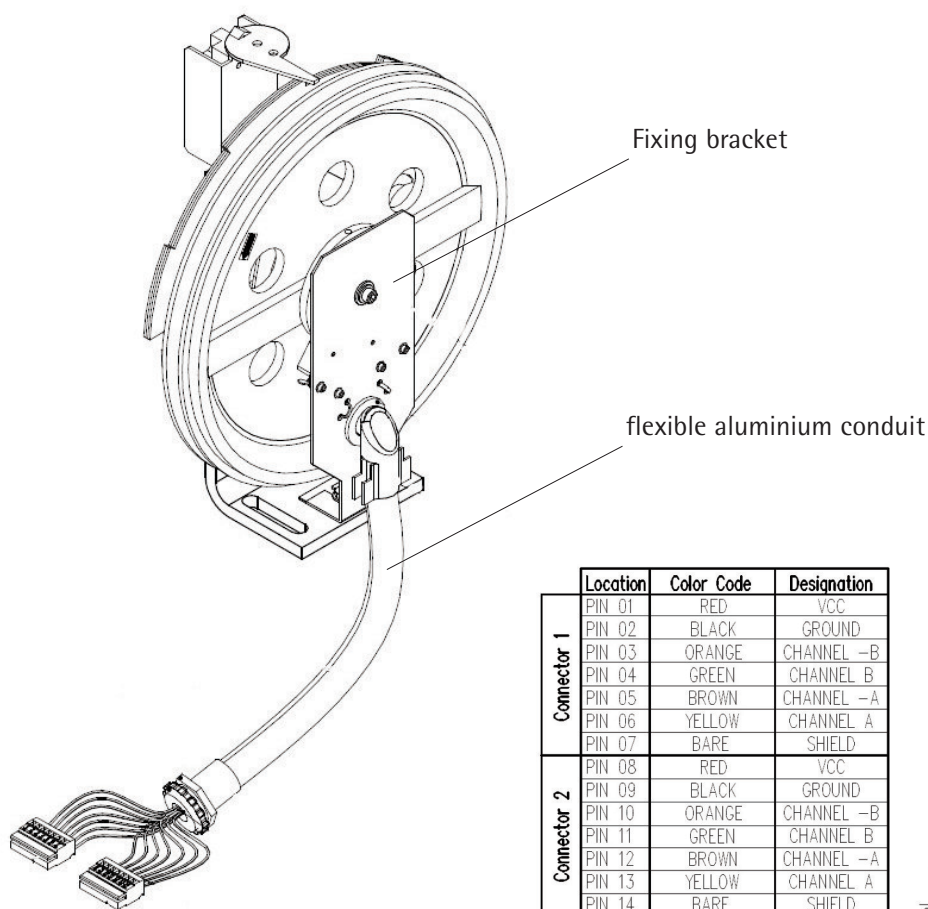
| red            | yellow<br>/red | white        | white<br>/brown      | green        | green<br>/brown      | yellow       | yellow<br>/brown     | black | yellow<br>/black |
|----------------|----------------|--------------|----------------------|--------------|----------------------|--------------|----------------------|-------|------------------|
| 10...30<br>VDC | Sense<br>Vcc   | channel<br>A | channel<br>inverse A | channel<br>B | channel<br>inverse B | channel<br>N | channel<br>inverse N | GND   | Alarm            |

*The encoder is delivered with 13m cable (without plug).*

#### 4.4.3 magnet-ring encoder 900897G01 (only available for 12" rope pulley)

The impulses of a magnet ring, which is fixed on the rope pulley, are measured.

 The signal may be used **only** as reference to another available source.



#### spezification

| type          | power supply  | output      | accuracy        |
|---------------|---------------|-------------|-----------------|
| Phoenix P9500 | 7,5 .. 13 VDC | 20mA / 5VDC | 800 pulses/rev. |

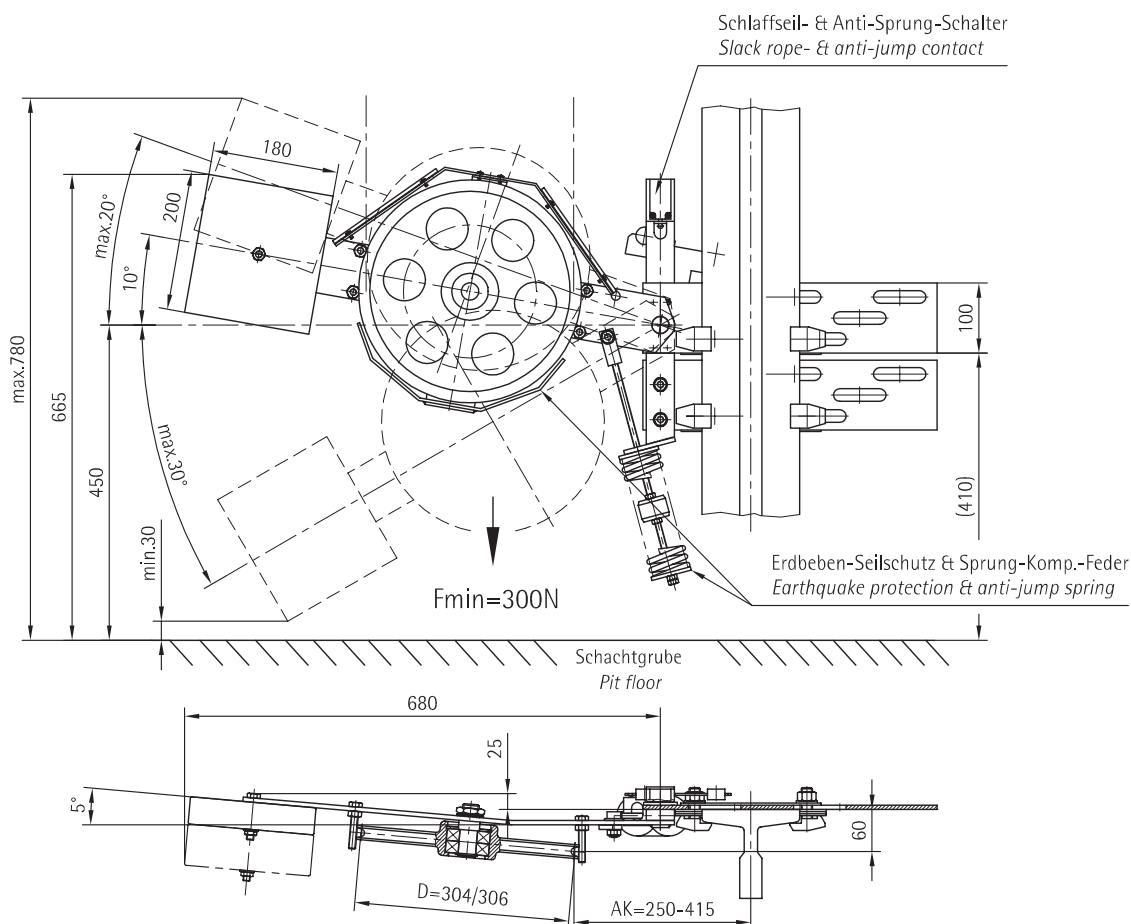
The encoder is delivered with 5ft cable (with plug).

#### 4.5 Swingarm tension weights



Other tension weights than shown are available on request.

##### 4.5.1 Swingarm tension weight 600456 (for 12" rope pulleys)



left version as drawn

right version is the mirror image

AK Distance rope centre - guide rail  
d Rope diameter  
D Nominal diameter rope pulley

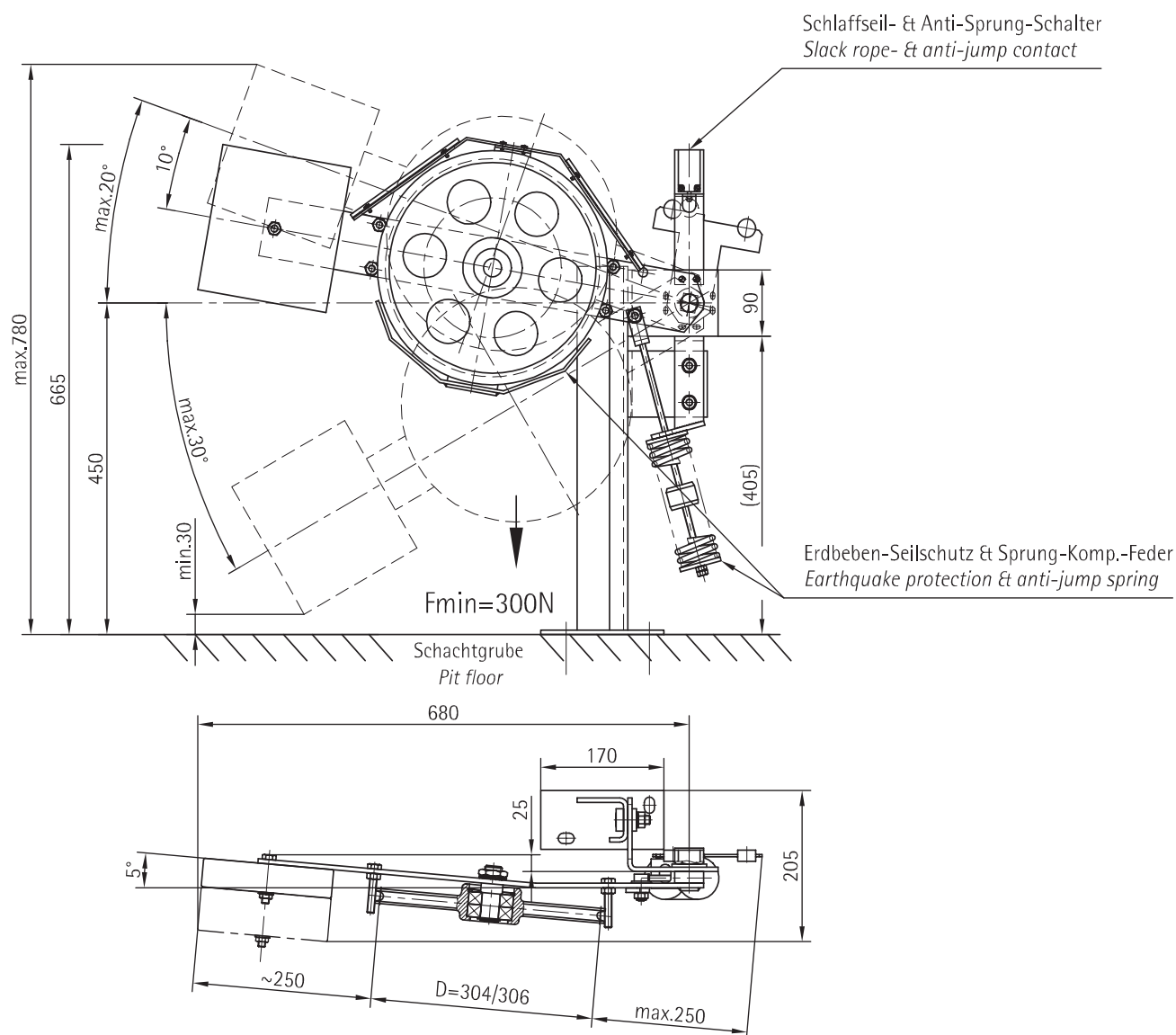
#### Range of use

- These tension weights are used with overspeed governor OL35-NA (it works in principle with other components as well, when they are according to the requirements of this document).
- max. elevator speed 500ft/min (2.5m/s)
- max. travel height 246' (75m)
- rope diameter  $d = 8/9.5(3/8)/10\text{mm}$
- applicable guide rails 5.75lb/ft (T82), 8lb/ft (T89), 11lb/ft (T114), 12lb/ft (T127-1), 15lb/ft (T127-2), 18.5lb/ft (T140-1), 22.5lb/ft (T140-2), 30lb/ft (T140-3) or appropriate
- Rope fixings on car frame or counterweight in accordance to dimension AK (optional 250mm - 415mm)
- Rope pulley diameter  $D = 12"$  (304/306mm)
- Tension force 300N

#### Contents of delivery

- Put together and adjusted at the factory
- Fixing equipment is included in standard delivery contents
- Slack rope contact (manual reset type) respectively the anti-jump contact is standard delivery content
- Earthquake protection (rope guard) and anti-jump spring to be ordered separately

#### 4.5.2 Swingarm tension weight 600777 G01, fixed to floor (for 12" rope pulleys)



right version as drawn

left version is the mirror image

d Rope diameter  
D Nominal diameter rope pulley

#### Range of use

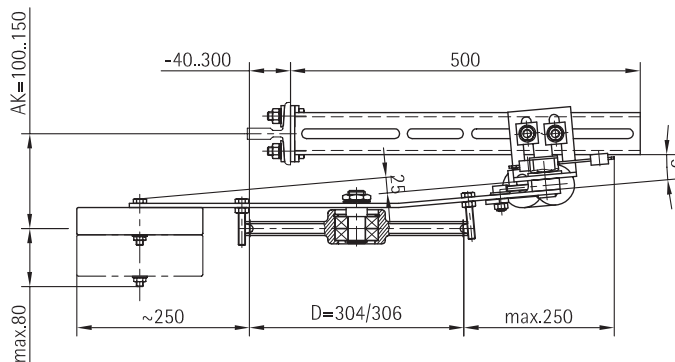
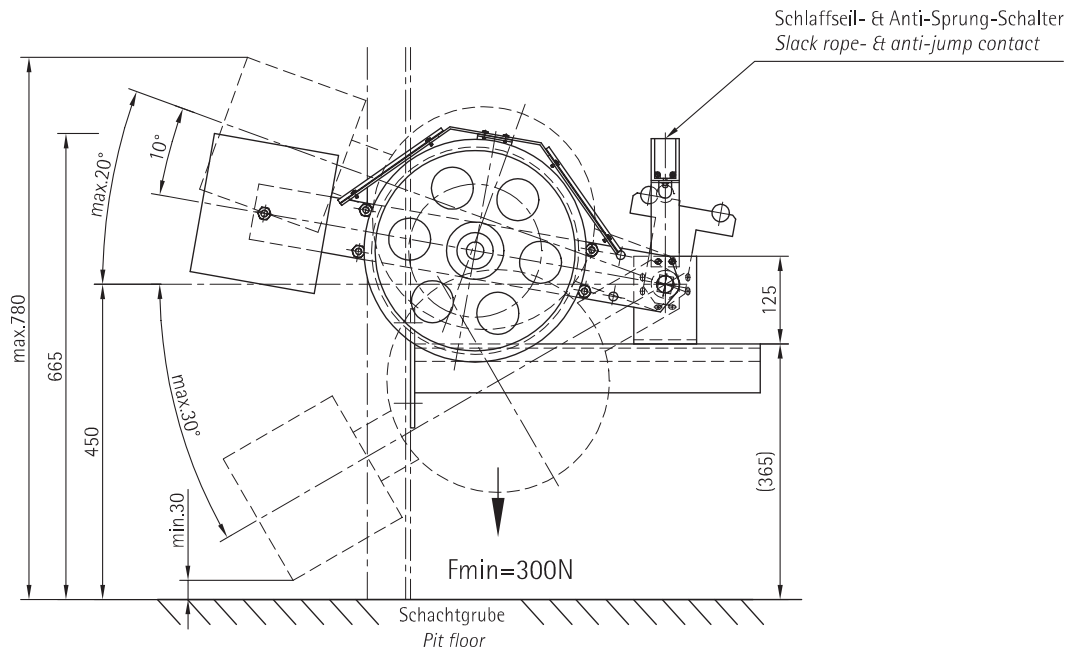
- These tension weights are used with overspeed governor OL35-NA (it works in principle with other components as well, when they are according to the requirements of this document).
- max. elevator speed 500fpm (2,5m/s)
- max. travel height 246' (75m)
- rope diameter  $d = 8/9.5(3/8'')/10\text{mm}$
- Rope pulley diameter  $D = 12'' (304/306\text{mm})$
- Tension force:  $F = 300\text{N}$

#### Contents of delivery

- Put together and adjusted at the factory
- Fixing equipment is included in standard delivery contents
- Slack rope contact (manual reset type) respectively the anti-jump spring is standard delivery content
- Earthquake protection (rope guard) and anti-jump contact to be ordered separately



#### 4.5.3 Swingarm tension weight 600777 (G03, G05) fixed to guide rail (for 12" rope pulleys)



right version as drawn

left version is the mirror image

AK Distance rope centre - guide rail  
d Rope diameter  
D Nominal diameter rope pulley

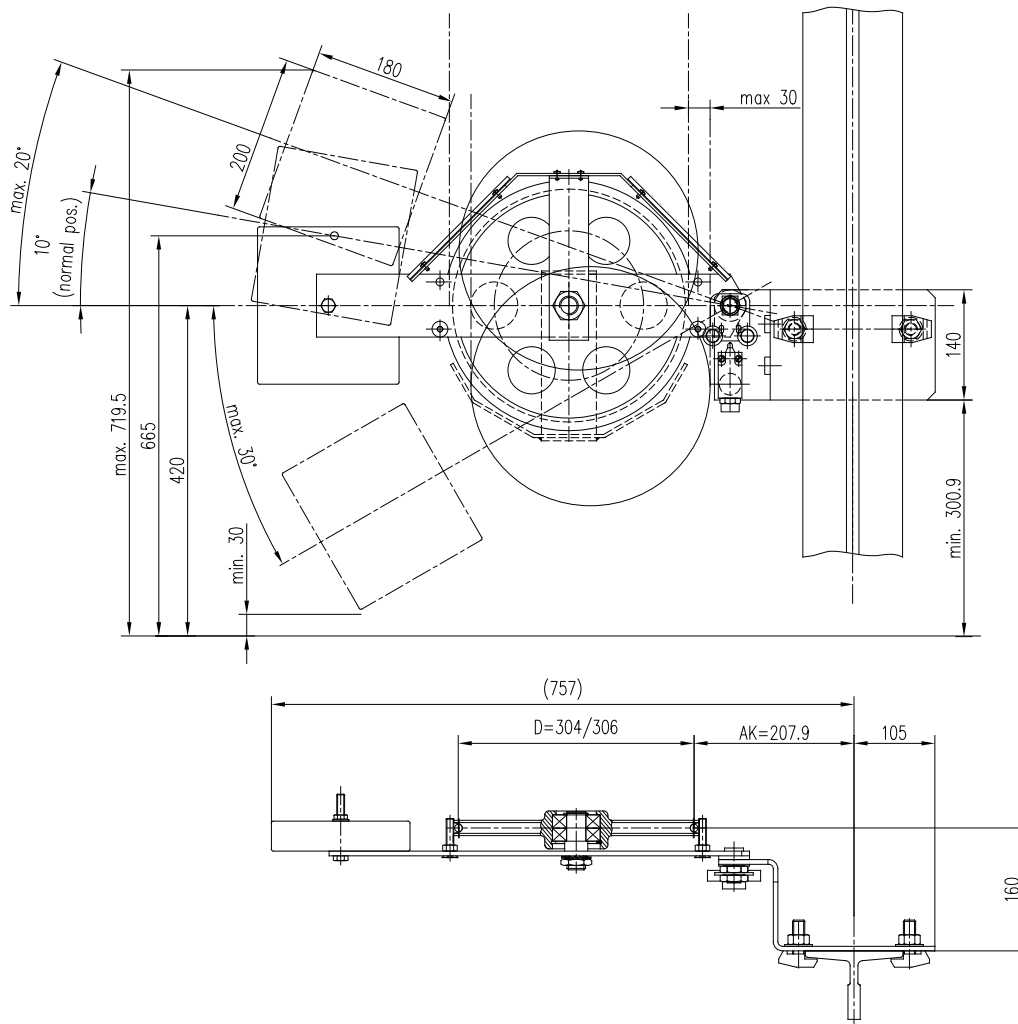
#### Range of use

- These tension weights are used with overspeed governor OL35-NA (it works in principle with other components as well, when they are according to the requirements of this document).
- max. elevator speed 500ft/min (2,5m/s)
- max. travel height 246' (75m)
- rope diameter  $d = 8/9.5(3/8)/10\text{mm}$
- applicable guide rails 5.75lb/ft (T82), 8lb/ft (T89), T125, 12lb/ft (T127-1), 15lb/ft (T127-2)
- Rope fixings on car frame or counterweight in accordance to dimension AK (optional 250mm - 415mm)
- Rope pulley diameter  $D = 12''$  (304/306mm)
- Tension force  $F = 300\text{N}$

#### Contents of delivery

- Put together and adjusted at the factory
- Fixing equipment is included in standard delivery
- Slack rope contact (manual reset type) respectively the anti-jump spring is standard delivery content
- Earthquake protection (rope guard) and anti-jump contact to be ordered separately

#### 4.5.4 Swingarm tension weight 604286G01 (for 12" rope pulleys)



left version as drawn

right version is the mirror image

AK Distance rope centre - guide rail  
d Rope diameter  
D Nominal diameter rope pulley

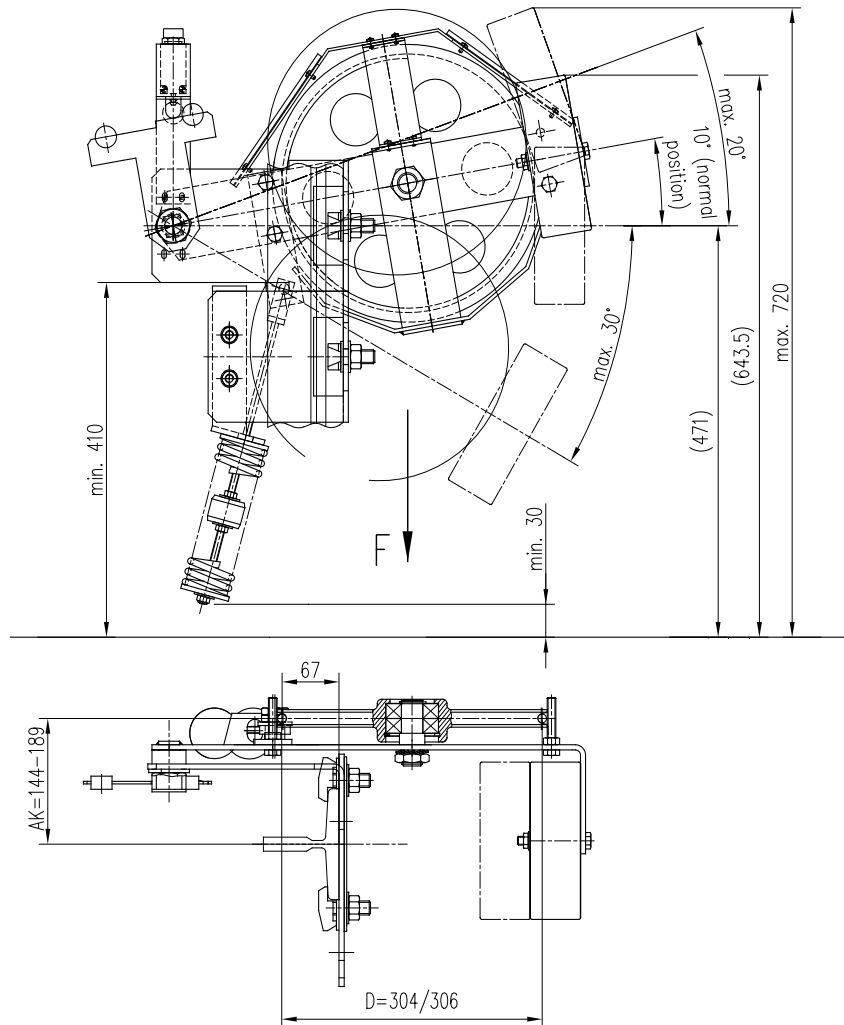
#### Range of use

- These tension weights are used with overspeed governor OL35-NA (it works in principle with other components as well, when they are according to the requirements of this document).
- max. elevator speed 500ft/min (2,5m/s)
- max. travel height 246' (75m)
- rope diameter  $d = 6 / 9,5\text{mm}$  (3/8")
- applicable guide rails T125, 12lb/ft (T127-1)
- Rope fixings on car frame or counterweight in accordance to dimension AK (207,9mm)
- Rope pulley diameter  $D = 12"$  (304/306mm)
- Tension force  $F = 300\text{N}$

#### Contents of delivery

- Put together and adjusted at the factory
- Fixing equipment is included in standard delivery
- Earthquake (rope guard) is optionally available.
- Slack rope contact is included in the delivery

#### 4.5.5 Swingarm tension weight 605215G01 (for 12" rope pulleys)



left version as drawn

right version is the mirror image

AK Distance rope centre - guide rail  
d Rope diameter  
D Nominal diameter rope pulley

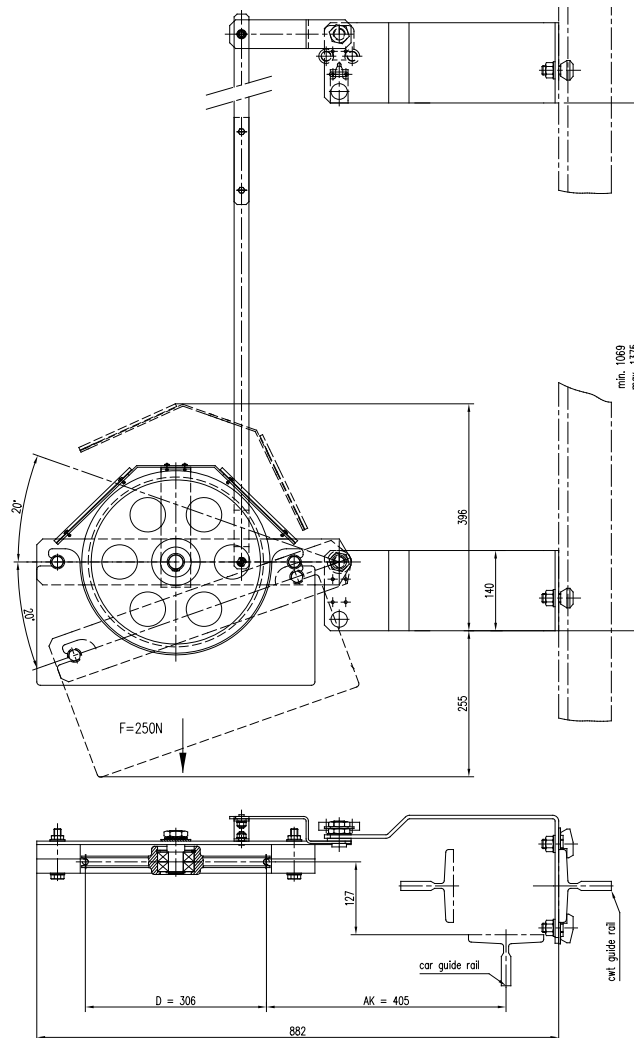
#### Range of use

- These tension weights are used with overspeed governor OL35-NA (it works in principle with other components as well, when they are according to the requirements of this document).
- max. elevator speed 500ft/min (2,5m/s)
- max. travel height 246' (75m)
- rope diameter  $d = 8/9.5(3/8)/10\text{mm}$
- applicable guide rails 12lb/ft (T127-1), 15lb/ft (T127-2), 18.5lb/ft (T140-1)
- Rope fixings on car frame or counterweight in accordance to dimension AK (optional 144mm - 189mm)
- Rope pulley diameter  $D = 12''$  (304/306mm)
- Tension force  $F = 300\text{N}$

#### Contents of delivery

- Put together and adjusted at the factory
- Fixing equipment is included in standard delivery contents
- Slack rope contact (manual reset type) is standard delivery content
- Earthquake protection (rope guard) is available, anti-

#### 4.5.6 Swingarm tension weight 900800G01/G02 (for 12" rope pulleys)



right version as drawn

left version is the mirror image

AK Distance rope centre - guide rail  
d Rope diameter  
D Nominal diameter rope pulley

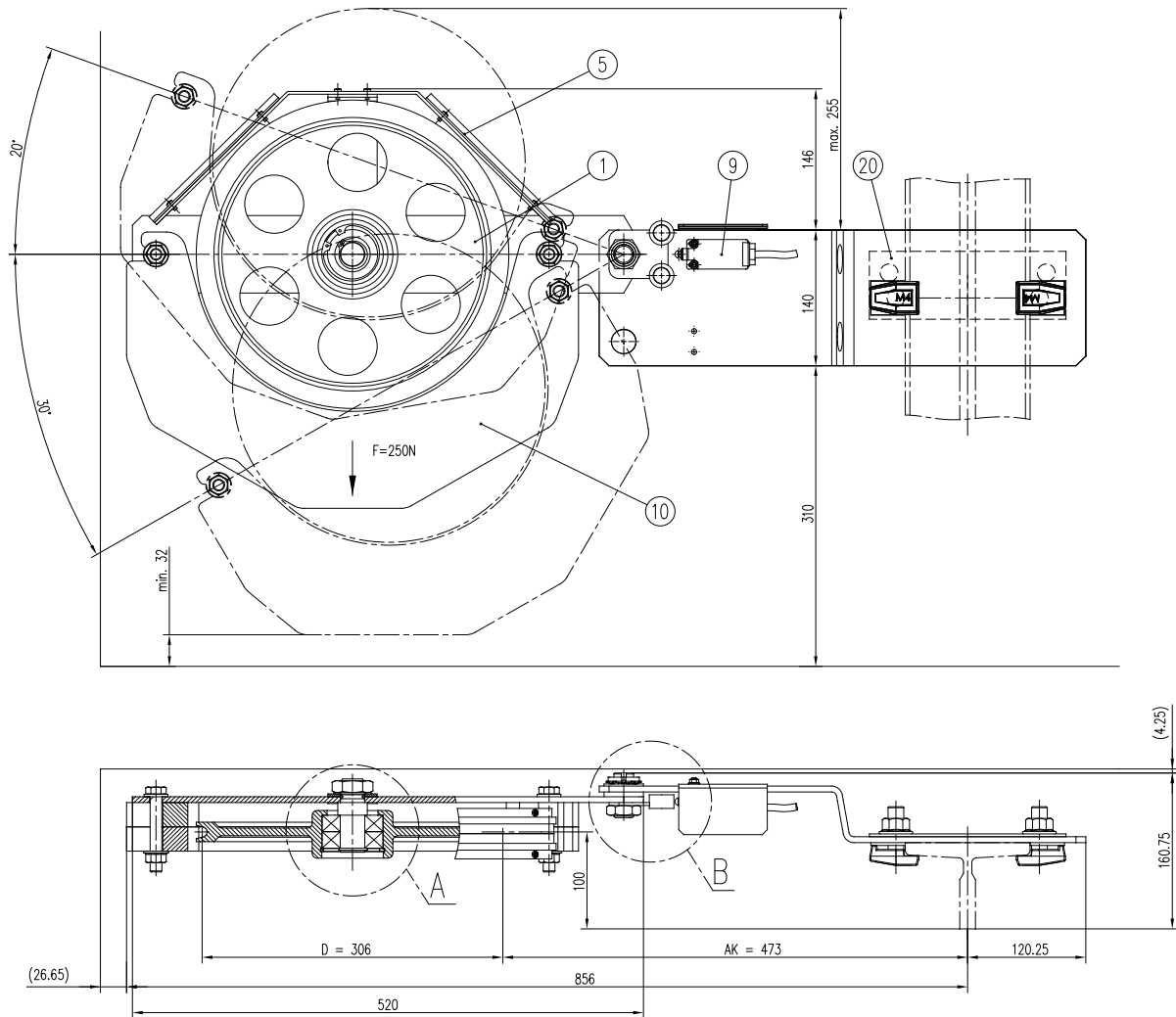
#### Range of use

- These tension weights are used with overspeed governor OL35-NA (it works in principle with other components as well, when they are according to the requirements of this document).
- max. elevator speed 500ft/min (2.5m/s)
- max. travel height 246' (75m)
- rope diameter  $d = 8/9.5(3/8'')/10\text{mm}$
- applicable guide rails 12lb/ft (T127-1), 15lb/ft (T140-1), 22.5lb/ft (T140-2)
- Rope fixings on car frame or counterweight in accordance to dimension AK (405mm)
- Rope pulley diameter  $D = 12''$  (306mm)
- Tension force  $F = 250\text{N}$

#### Contents of delivery

- Put together and adjusted at the factory
- Fixing equipment is included in standard delivery contents
- Slack rope contact (manual reset type) is standard delivery content
- Earthquake (rope guard) protection is included in the delivery, anti-jump spring is not available

#### 4.5.7 Swingarm tension weight 934141G01 (for 12" rope pulleys)



left version as drawn

right version is the mirror image

#### Range of use

- These tension weights are used with overspeed governor OL35-NA (it works in principle with other components as well, when they are according to the requirements of this document).
- max. elevator speed 500ft/min (2,5m/s)
- max. travel height 246' (75m)
- rope diameter  $d = 8/9.5(3/8)/10\text{mm}$
- applicable guide rails 15lb/ft (T127-2)
- Rope fixings on car frame or counterweight in accordance to dimension AK (473mm)
- Rope pulley diameter  $D = 12''$  (306mm)
- Tension force:  $F = 250\text{N}$

- AK Distance rope centre - guide rail  
d Rope diameter  
D Nominal diameter rope pulley

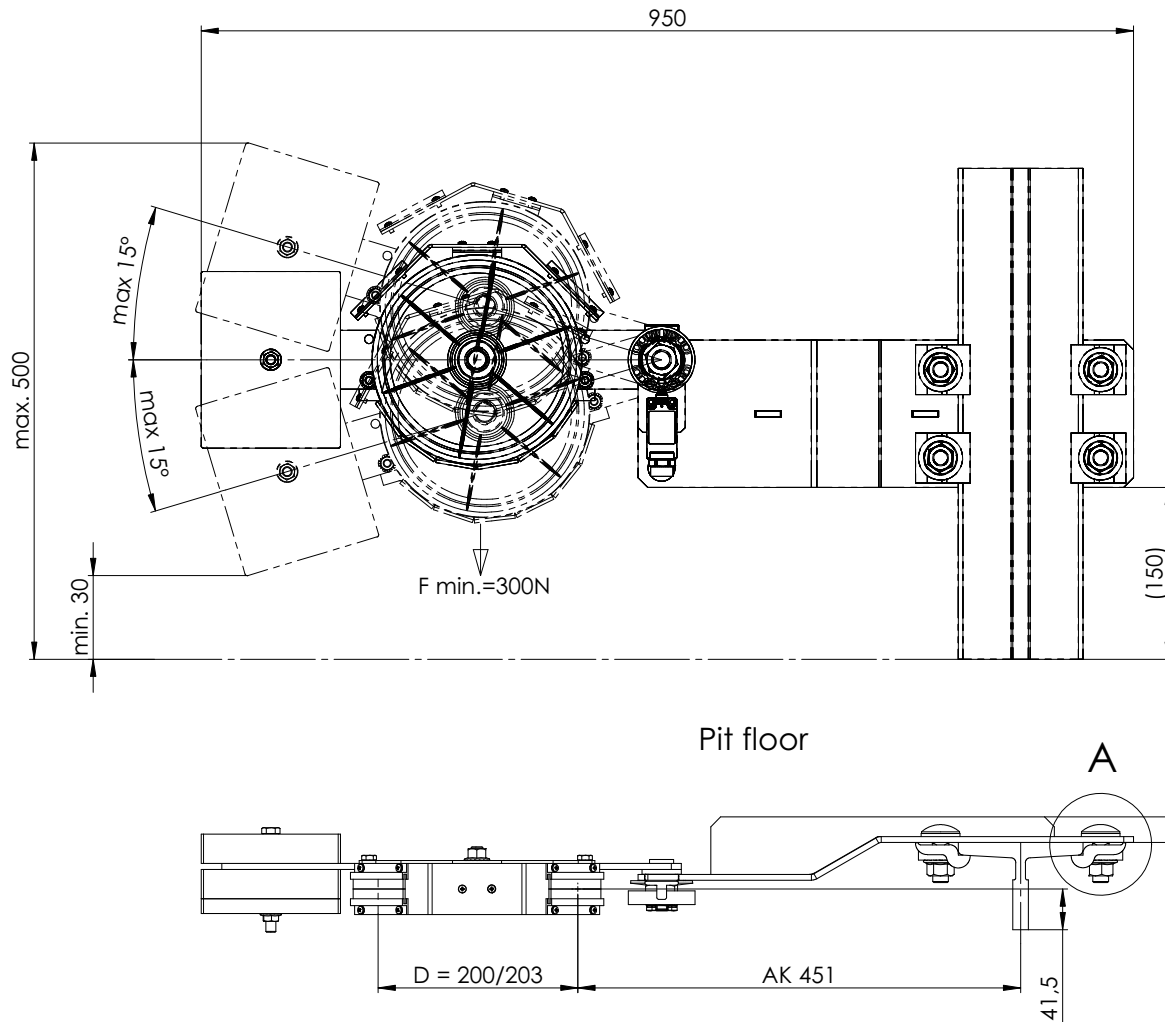
#### Contents of delivery

- Put together and adjusted at the factory
- Fixing equipment is included in standard delivery
- Earthquake (rope guard) protection is included in the delivery, anti-jump spring is not available
- Slack rope contact (manual reset type) respectively the anti-jump contact is standard delivery content

OL35-NA  
NORTH AMERICA  
OVERSPEED GOVERNOR

Blatt/sheet D700CDEGB.30  
Datum/date 15.10.2002  
Stand/version E-01.03.2021  
Geprüft/approved WAT/KKr

4.5.8 Swingarm tension weight 1064818 (for 8" rope pulleys)



left version as drawn

right version is the mirror image

AK Distance rope centre - guide rail  
D Nominal diameter rope pulley

Range of use

- These tension weights are used with overspeed governor OL35-NA (it works in principle with other components as well, when they are according to the requirements of this document).
- max. elevator speed 200ft/min (1m/s)
- max. travel height 98 1/2' (30m)
- rope diameter  $d = 6/6,5\text{mm}$
- applicable guide rails 15lb/ft (T127-2/B)
- Rope fixings on car frame or counterweight in accordance to dimension AK (451mm)
- Rope pulley diameter  $D = 8''$  (200/203mm)
- Tension force  $F = 300\text{N}$

Contents of delivery

- Put together and adjusted at the factory
- Fixing equipment is included in standard delivery
- Earthquake (rope guard) protection is included in the delivery, anti-jump spring is not available
- Slack rope contact (manual reset type) respectively the anti-jump contact is standard delivery content

OL35-NA  
NORTH AMERICA  
OVERSPEED GOVERNOR

Blatt/sheet D700CDEGB.31  
Datum/date 15.10.2002  
Stand/version E-01.03.2021  
Geprüft/approved WAT/KKr

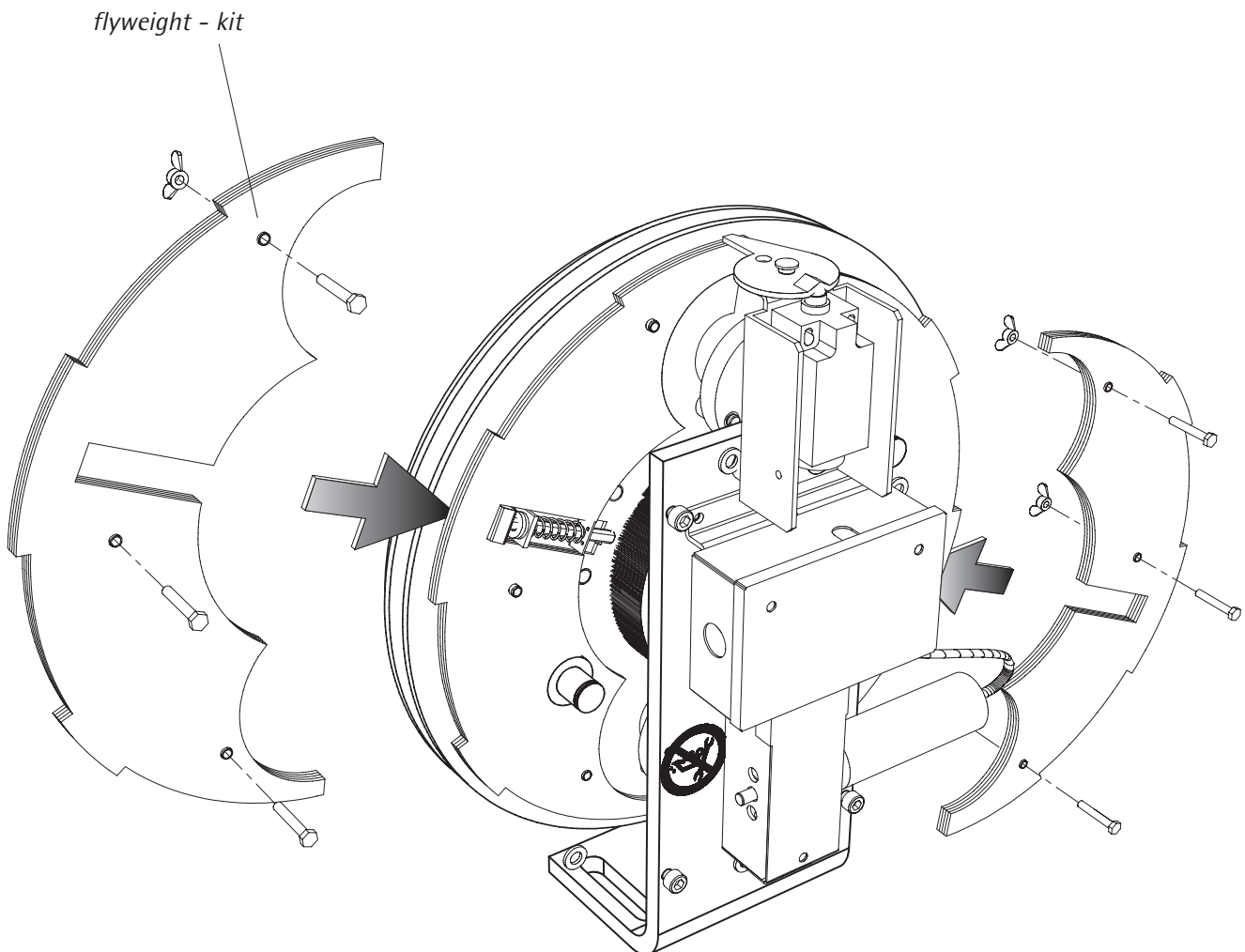
#### 4.6 Flyweight - kit

The flyweight kit is used only during installation phase to reduce tripping speed of the overspeed governor.

The flyweight - kit is only available for overspeed governors up to 500ft/min and a pulley diameter of 306mm.



For periodic checks the flyweight kit must not be used, these checks will be done with remote control or manual tripping device.

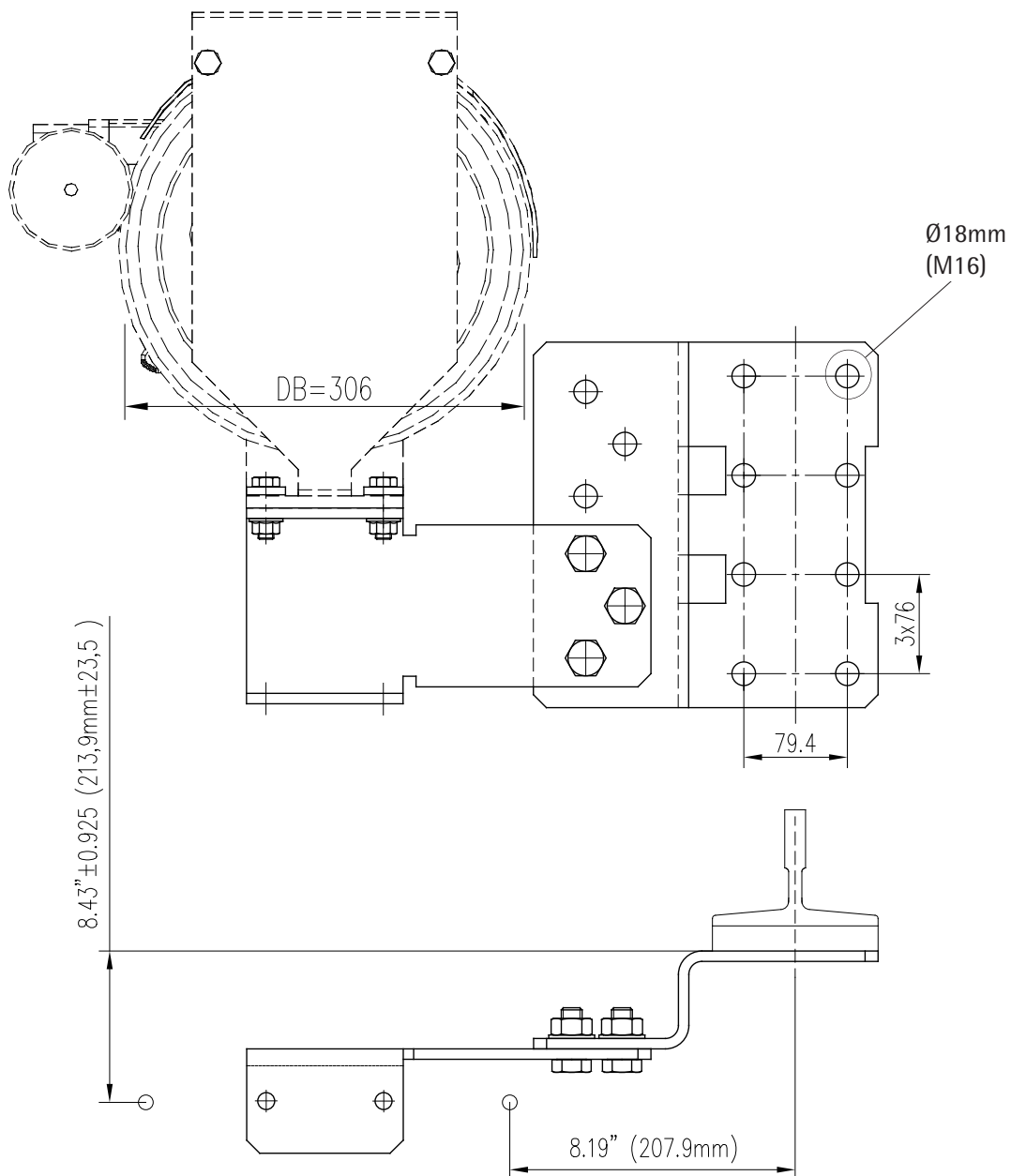


#### 4.7 Base

All bases are available on request and customizable.  
The following pictures show the standard dimensions. If a customized base is ordered, the dimensions might vary.

##### 4.7.1 base type 604288G01 (for 306mm rope pulleys)

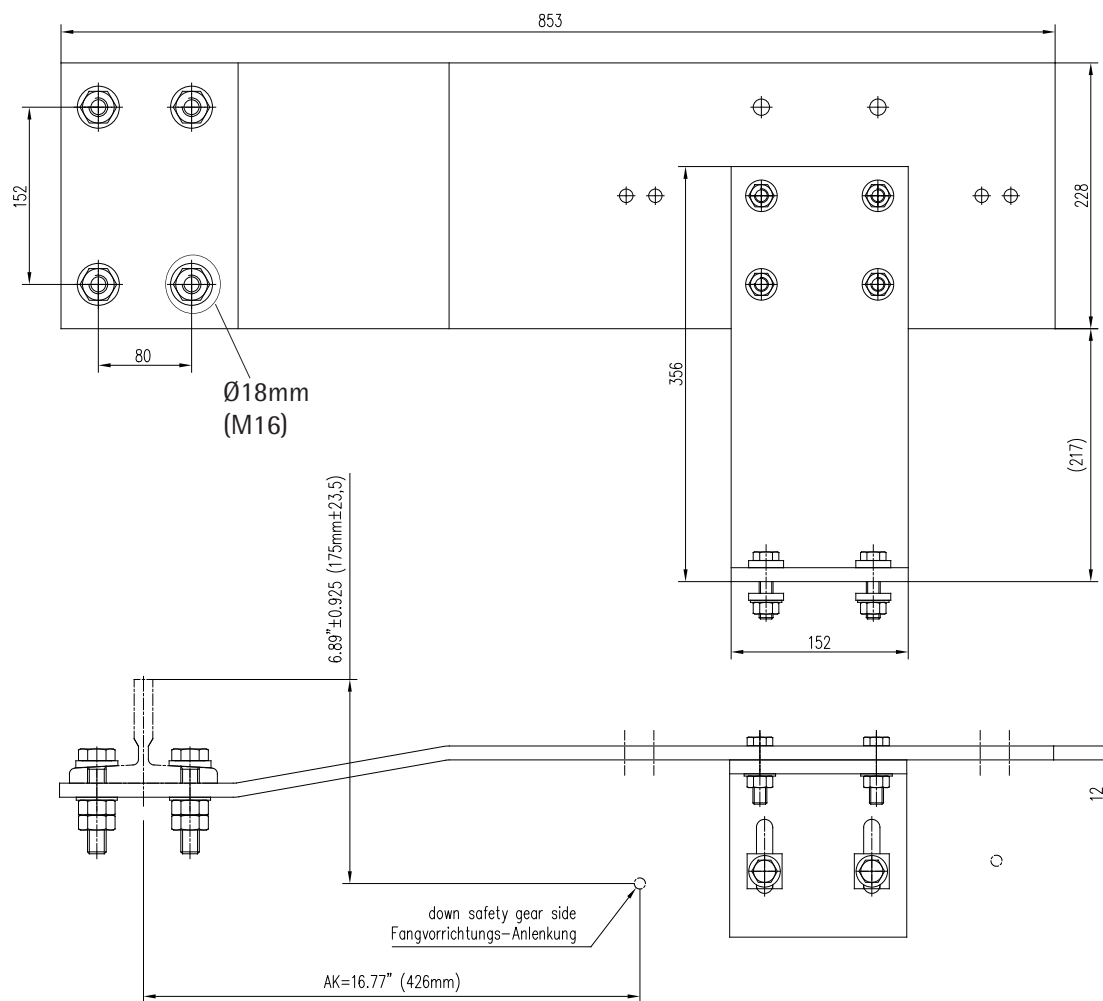
Fixing material is included in the delivery.





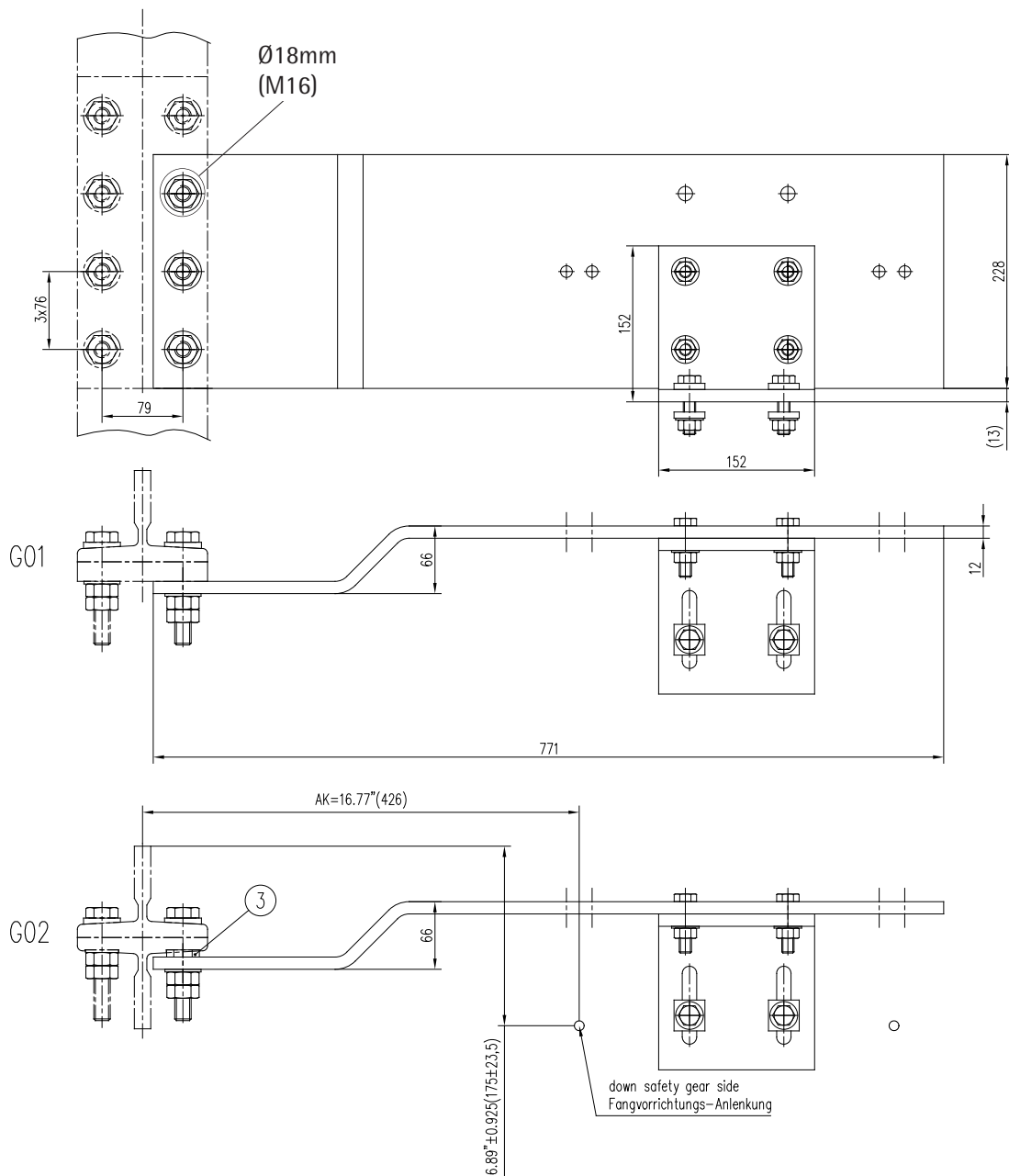
#### 4.7.2 base type 900595G01 (for 306mm rope pulleys)

Fixing material is included in the delivery .



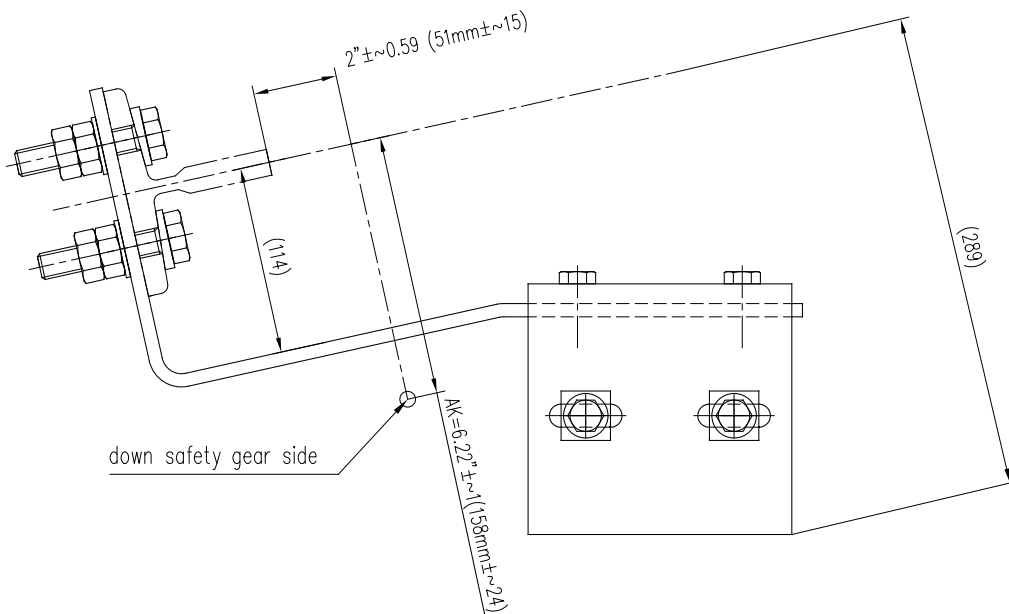
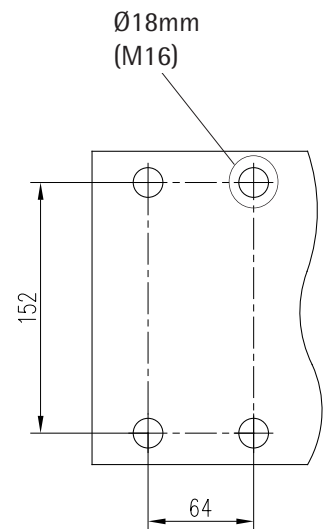
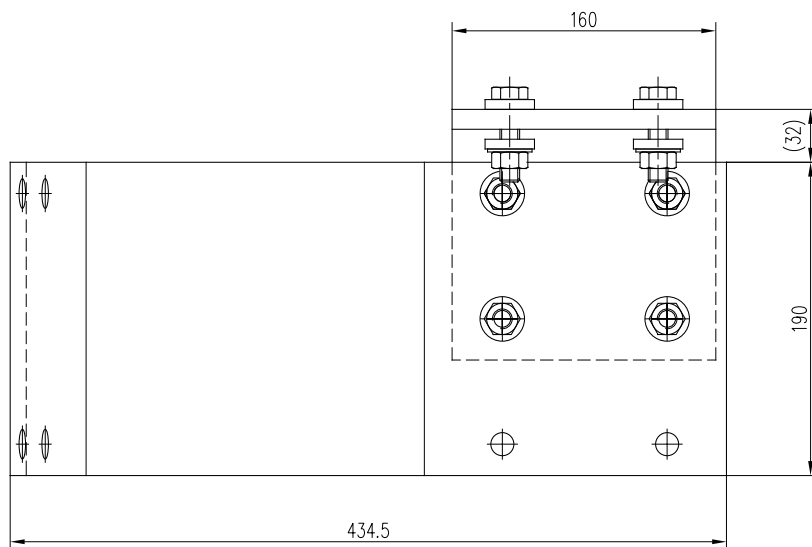
#### 4.7.3 base type 900596G01/G02 (for 306mm rope pulleys)

Fixing material is included in the delivery.



#### 4.7.4 base type 900598G01 (for 306mm rope pulleys)

Fixing material is included in the delivery .





---

OL35-NA  
NORTH AMERICA  
OVERSPEED GOVERNOR

Blatt/sheet D700CDEGB.36  
Datum/date 15.10.2002  
Stand/version E-01.03.2021  
Geprüft/approved WAT/KKr

## 5 Content of supply

- Overspeed governor OL35-NA, preadjusted in the factory for the defined nominal speed  
(Tripping direction: Tripping right or tripping left)
- Cover with rope guard (also applicable in seismic zones)

### 5.1 Options

- Remote Control  
Is used to test the overspeed governor, inspect the safety gears, stop the elevator under tripping speed.
- Encoder

### 5.2 Additional equipment

- Swingarm tension weight
- Flyweight - kit
- Base

### 5.3 On request

- Other tension weights than mentioned
- Governor base according customer layout (for machine room- and machine room less applications)



OL35-NA  
NORTH AMERICA  
OVERSPEED GOVERNOR

Blatt/sheet D700CDEGB.37  
Datum/date 15.10.2002  
Stand/version E-01.03.2021  
Geprüft/approved WAT/KKr

|                               |                             |
|-------------------------------|-----------------------------|
| <input type="radio"/> Inquiry | <input type="radio"/> Order |
| Company                       |                             |
| Address                       |                             |
| Fax/Email                     |                             |
| Tel.                          |                             |
| Contact                       |                             |

|                         |
|-------------------------|
| Date                    |
| Customer reference      |
| Order number            |
| Final customer          |
| Country                 |
| Delivery time requested |

Product code OL 35-NA

Quantity (single piece) \_\_\_\_\_ pcs

Rope pulley diameter ☐ 12" (306mm) ☐ for car ☐ for counterweight  
☐ 8" (200/203mm) ☐ for car

Rope diameter 12"mm pulley: ☐ 0.374" (9.5mm) ☐ 0.236" (6mm)  
8"mm pulley: ☐ 0.256" (6.5mm) ☐ 0.236" (6mm)

Nominal Speed NS \_\_\_\_\_ ft/min \_\_\_\_\_ (m/s)

Tripping direction ☐ right ☐ left

Technical survey ☐ ASME A17.1 / CSA B44

Test Report ☐ Yes

Remote Control (obligatory for rope pulley diameter 8") ☐  
Position of remote control ☐ A ☐ B

Encoder (only available for 12" rope pulley)

Friction-type encoder ☐ Position of the encoder ☐ side ☐ top  
Magnet ring encoder ☐

Cover (obligatory, includes rope guard)

|   |                  |                                     |  |
|---|------------------|-------------------------------------|--|
| No encoder:   | 12" rope pulley: | machine room                        | machine room less                      |
|   | 8" rope pulley:  | <input type="checkbox"/> 601958G01  | <input type="checkbox"/> 604289G01/G02 |
|   |                  | <input type="checkbox"/> 1063789A01 |  |
| Side-mounted friction encoder (only 12" rope pulley): |                  | <input type="checkbox"/> 601958G01  | <input type="checkbox"/> 604289G01/G02 |
| Top-mounted friction encoder (only 12" rope pulley):  |                  |                                     | <input type="checkbox"/> 604289G05/G06 |
| Magnet ring encoder (only 12" rope pulley):           |                  | <input type="checkbox"/> 901539G01  |  |

Flyweight - Kit (only available for 12" rope pulley) ☐

Swingarm tension weight

Type ☐ 600456 for rope pulley diameter 12" (306mm) and rope diameter d = 3/8" (9,5mm)

|   |   |   |   |
|---|---|---|---|
| Guide rail type   | <input type="checkbox"/> 5.75lb/ft (T82)    | <input type="checkbox"/> 8lb/ft (T89)       | <input type="checkbox"/> 11lb/ft (T114) |
|   | <input type="checkbox"/> T125               | <input type="checkbox"/> 12lb/ft (T127-1)   |   |
|   | <input type="checkbox"/> 15lb/ft (T127-2)   | <input type="checkbox"/> 18.5lb/ft (T140-1) |   |
|   | <input type="checkbox"/> 22.5lb/ft (T140-2) | <input type="checkbox"/> 30lb/ft (T140-3)   |   |
| Pick up distance  | AK _____ mm _____ (inch)                    |   |   |
| Orientation   | <input type="checkbox"/> left               | <input type="checkbox"/> right              |   |
| Earthquake protection (rope guard) and anti-jump spring | <input type="checkbox"/>                    |   |   |

- ☐ 600777 for rope pulley diamter 12" (306mm) and rope diameter d = 3/8" (9,5mm)  
 Fixation ☐ fixed to floor ☐ fixed to guide rail  
 Guide rail type ☐ 5.75lb/ft (T82) ☐ 8lb/ft (T89) ☐ T125  
☐ 12lb/ft (T127-1) ☐ 15lb/ft (T127-2)  
 Pick up distance AK \_\_\_\_\_ inch \_\_\_\_\_ (mm)  
 Orientation ☐ left ☐ right  
 Earthquake protection (rope guard) and anti-jump spring ☐
- ☐ 604286G01 for rope pulley diamter 12" (306mm) and rope diameter d = 3/8" (9,5mm) or 0.236" (6mm)  
 Rope diameter ☐ 3/8" ☐ 0.236"  
 Guide rail type ☐ T125 ☐ 12lb/ft (T127-1)  
 Pick up distance ☐ AK = 8.15" (207,9mm)  
 Orientation ☐ left ☐ right  
 Earthquake protection (rope guard) ☐
- ☐ 605215G01 for rope pulley diamter 12" (306mm) and rope diameter d = 3/8" (9,5mm)  
 Guide rail type ☐ 12lb/ft (T127-1) ☐ 15lb/ft (T127-2)  
☐ 18.5lb/ft (T140-1)  
 Pick up distance AK \_\_\_\_\_ (5.67" - 7.44", 144mm - 189mm)  
 Orientation ☐ left ☐ right  
 Earthquake protection (rope guard) ☐
- ☐ 900800G01/G02 for rope pulley diamter 12" (306mm) and rope diameter d = 3/8" (9,5mm)  
 Guide rail type ☐ 12lb/ft (T127-1) ☐ 18.5lb/ft (T140-1) ☐ 22.5lb/ft (T140-2)  
 Pick up distance ☐ AK = 15.95" (405mm)  
 Orientation ☐ left ☐ right
- ☐ 934141G01 for rope pulley diamter 12" (306mm) and rope diameter d = 3/8" (9,5mm)  
 Guide rail type ☐ 15lb/ft (T127-2)  
 Pick up distance ☐ AK = 18.62" (473mm)  
 Orientation ☐ left ☐ right
- ☐ 1064818 for rope pulley diamter 8" (200/203mm) and rope diameter d = 0.236/0.256" (6/6.5mm)  
 Guide rail type ☐ 15lb/ft (T127-2B)  
 Pick up distance ☐ AK = 17.76" (451mm)  
 Orientation ☐ left ☐ right

#### Packing Governor

- ☐ Wooden Box ☐ Cardboard (minimum order quantity = 10)  
 - ISPM15 - wood pallet with 10 boxes  
 - barkfree (BF) - VCI - foil (sea pack)  
 - VCI - foil (sea pack)

#### Packing Tension Weight

- ☐ Wooden Box ☐ Cardboard (minimum order quantity = 5)  
 - ISPM15 - wood pallet with 5 boxes  
 - barkfree (BF) - VCI - foil (sea pack)  
 - VCI - foil (sea pack)

If governors and tension weights are ordered simultaneously with a quantity smaller than 10 pieces each, both is packed together in a wooden box. (one box per set)

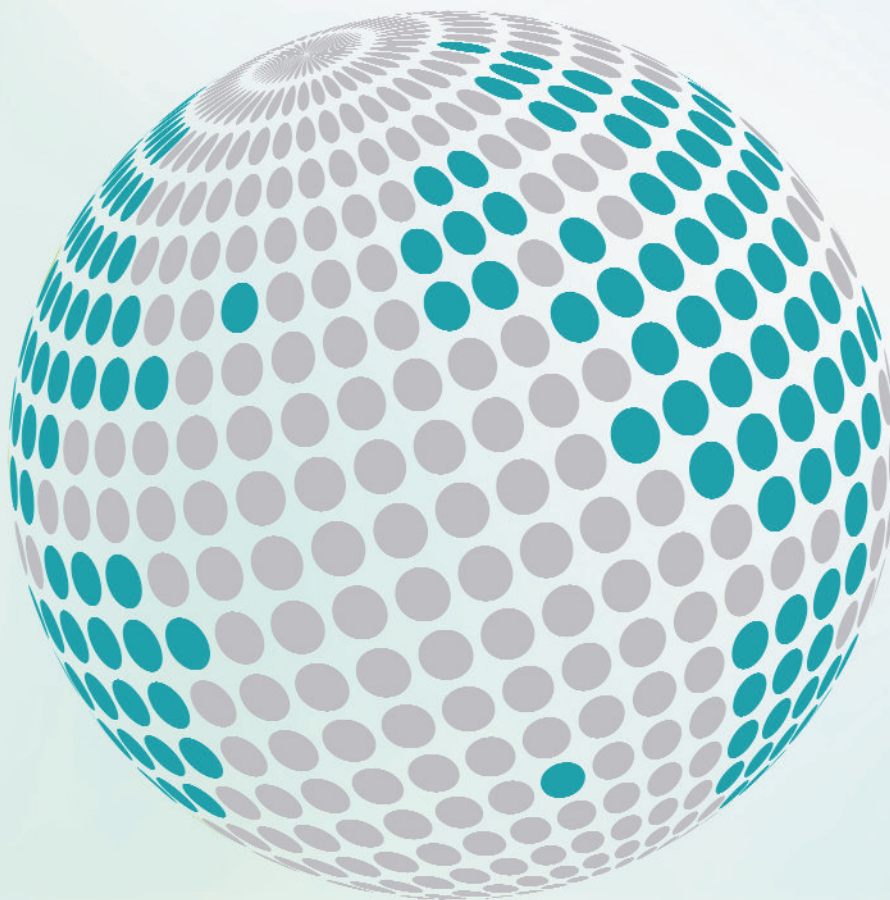
REMARKS \_\_\_\_\_

\_\_\_\_\_

\_\_\_\_\_



**YOUR GLOBAL PARTNER FOR COMPONENTS,  
MODULES AND SYSTEMS IN THE ELEVATOR INDUSTRY**



*safety **in** motion*™

[www.wittur.com](http://www.wittur.com)

More information  
about Wittur Group  
available on-line.



**SELCOM**®  
a WITTUR brand

**Liftmaterial**  
a WITTUR brand

**semaTIC**®  
a WITTUR brand