

SALES BROCHURE

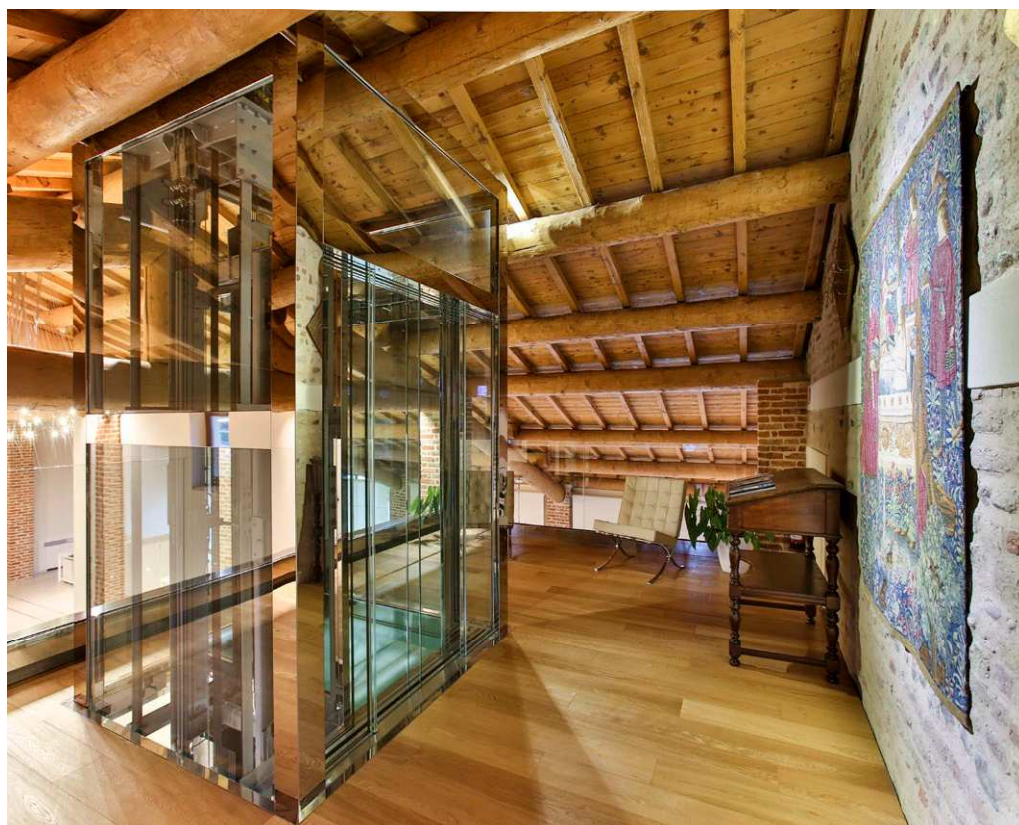


NETTUNO

Date 07.12.2017

Version GB

Execution with underdriven operator



safetyⁱⁿ motion™

No part of this publication may be reproduced or translated, even in part, without prior written permission from WITTUR.

Subject to change without notice!

© Copyright WITTUR 2017

NETTUNO

INDEX

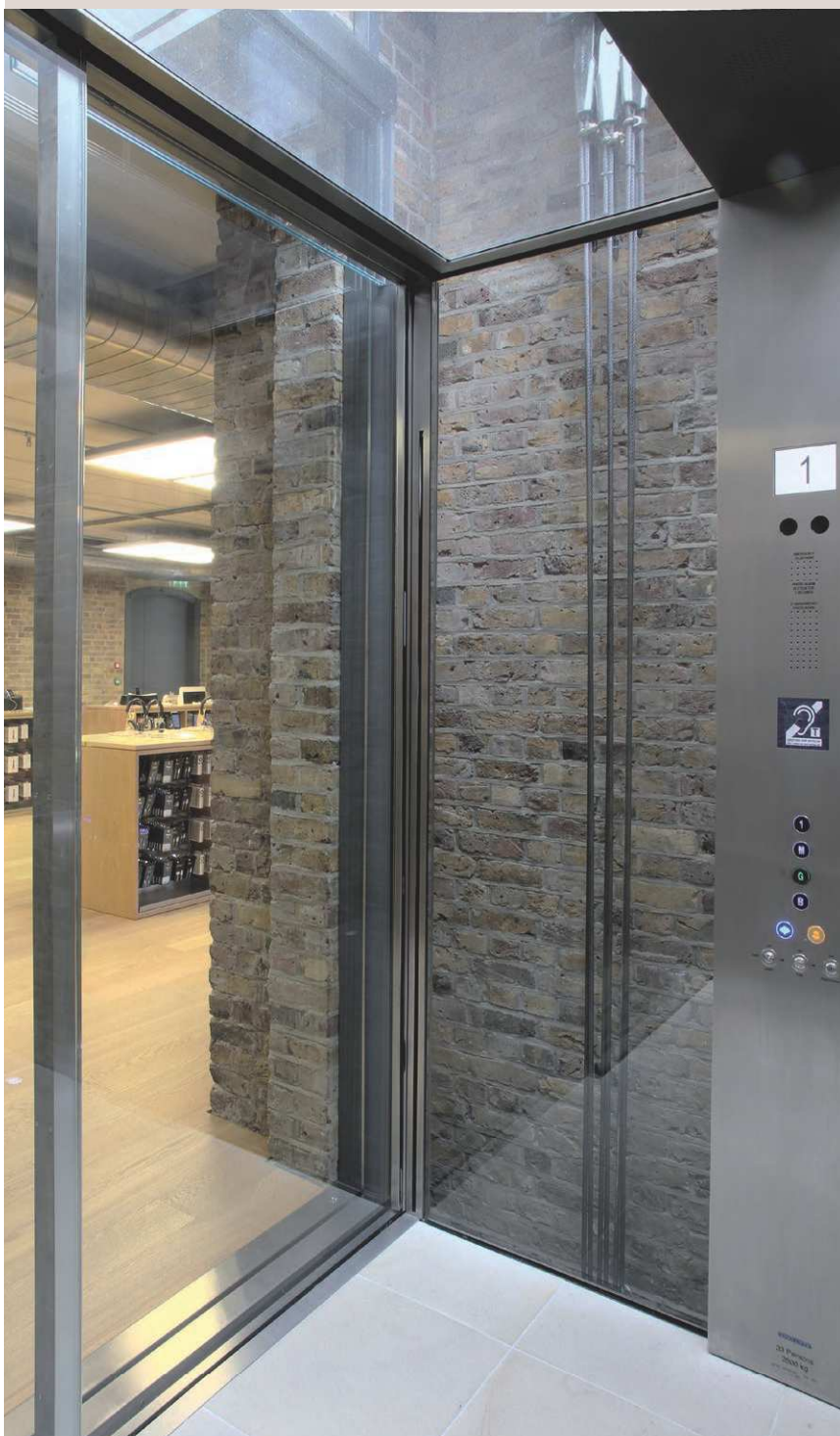
CONTENTS

PAGE

• INDEX	2
• UNDERDRIVEN CAR DOOR FEATURES	3
• UNDERDRIVEN LANDING DOOR FEATURES	4
• RANGE DIMENSIONS	5
• THE ELEVATOR DOORS AS AN AESTHETICAL ELEMENT	6
• TYPE 01-02/U, MAX OVERALL DIMENSIONS	8
Vertical section for glass panels with visible and hidden trims	9
Vertical section for sheet metal panels/framed glass panels	10
Fixing points	11
• TYPE 41-42/U AND 11-12/U, MAX OVERALL DIMENSIONS	12
Vertical section for glass panels with visible and hidden trims	13
Vertical section for sheet metal panels/framed glass panels	14
Fixing points 41-42/U	15
Fixing points 11-12/U	16
• TYPE 71-72/U, MAX OVERALL DIMENSIONS	17
Vertical section for glass panels with visible and hidden trims	18
Vertical section for sheet metal panels/framed glass panels	19
Fixing points 71-72/U	20

NETTUNO

UNDERDRIVEN CAR DOOR FEATURES



Straight underdriven operator

- Mechanism completely covered (apart the back side, optional)
- Upper guide completely in Stainless Steel (or other material on request)
- Stainless Steel sill (or other material on request)
- Coupling system with retractable cam / fix cam
- PLUS belt motorization with MIDI or SUPRA controller
- Frequency control speed regulation
- Car door locking device integrated in the retractable cam (optional)

Panels

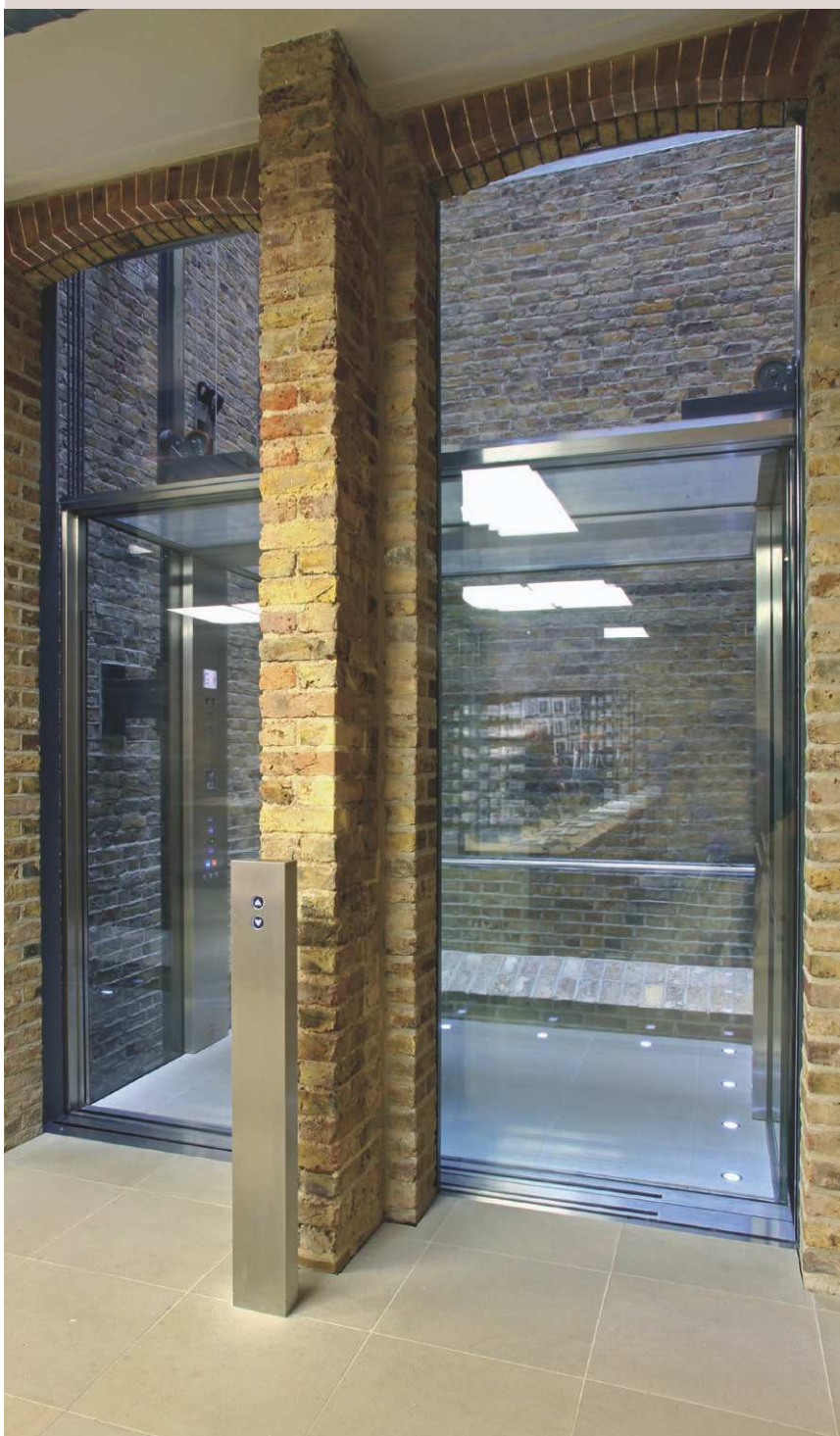
- Steel panels, single or double skinned
- Glass framed
- Full Glass with :
 - Visible trims in the top and in the bottom
 - Visible trim only in the bottom
 - Without any trim (hidden)

Options

- Water proof execution IP54
- Air-Water partial protection with sealing gaskets (optional)
- Special finishing available on demand
- Headed sill
- Light curtain WSE Evo (EN 81-20/50 compliant)
- Hidden sill
- Full inox execution
- Special execution for inclined lifts

NETTUNO

UNDERDRIVEN LANDING DOOR FEATURES



Straight underdriven landing door

- Mechanism completely covered (apart the back side, optional)
- Upper guide completely in Stainless Steel (or other material on request)
- Stainless Steel sill (or other material on request)
- Hidden re-closing system (reel system)
- Emergency device :
 - Mounted on the bottom part of side architraves
 - With flexible wire (more adaptable on site)
 - Integrated in the sill (optional, valid only for full glass panels)

Panels and Architraves

- Steel panels, single or double skinned
- Glass framed
- Full Glass with :
 - Visible trims in the top and in the bottom
 - Visible trim only in the bottom
 - Without any trim (hidden)
- Standard Architraves (120+120+120, different size available on request)
- Lock certificate: EN81-1/2; Custom Union, Australia; ASME A17.1; EN81-20/50; Korea
- Fire protection EN81-58 E90/120-EI60, BS476-22 E120 steelworks panels, EN81-58 E90-EI20-EI60, BS476-22 E120 glass framed panels

Options

- Water proof execution (optional IP54 or up to IP67)
- Air-Water partial protection with sealing gaskets (optional)
- Motorized landing door
- Heated sill
- Framed glass entrance
- Hidden sill
- Full inox execution
- Special execution for inclined lifts

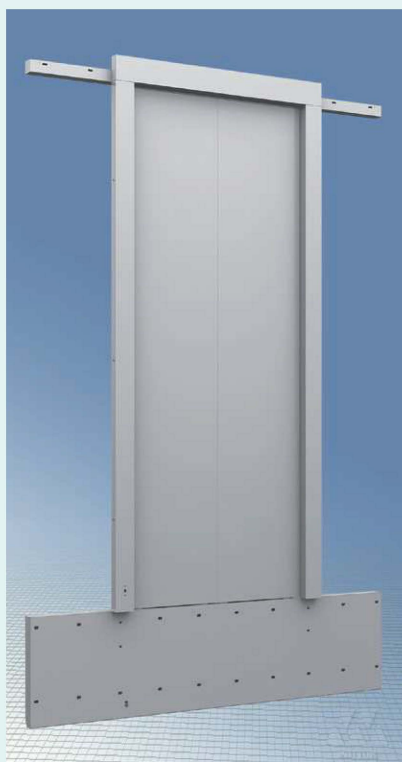
NETTUNO

UNDERDRIVEN CAR DOOR

FULL GLASS PANELS



METAL SHEET PANELS



GLASS-FRAMED PANELS



SERIES 3203 - NETTUNO

Landing doors			Car doors			C.O.		C.H.	
Type	Illustration	Sill	Type	Illustration	Sill	Min.	Max.	Min.	Max.**
01/U		75	02/U		75	700	1400	2000	3100
11/RU		120	12/RU		120	700	1400	2000	3100
11/LU		120	12/LU		120	700	1400	2000	3100
41/U		120	42/U		120	750	3200	2000	3500

**L.H. depends on C.O.

For other requests, please verify with Technical Dept.

The elevator door as an aesthetical element in the architectural project of a building



- The elevator system can be the distinctive element of a building both for modernizations and new installations projects
- Wide range of customized solutions: recent technical developments allow to overcome many structural limits that reduced available elevator systems solutions

Photo: courtesy of SARM Ascensori.

The elevator door as an aesthetical element in the architectural project of a building

DOORS TECHNOLOGY

- Full-glass panels
- High aesthetic impact with full-glass frames for a totally panoramic system
- Frames without metal outlines
- Doors design suitable both for modern and prestigious locations
- Customized dimensions and finishes available for special projects



HIDDEN SILL

- Guarantee of an aesthetical and functional continuity between landing and car floor.
- Simplified cleaning and maintenance of the elevator

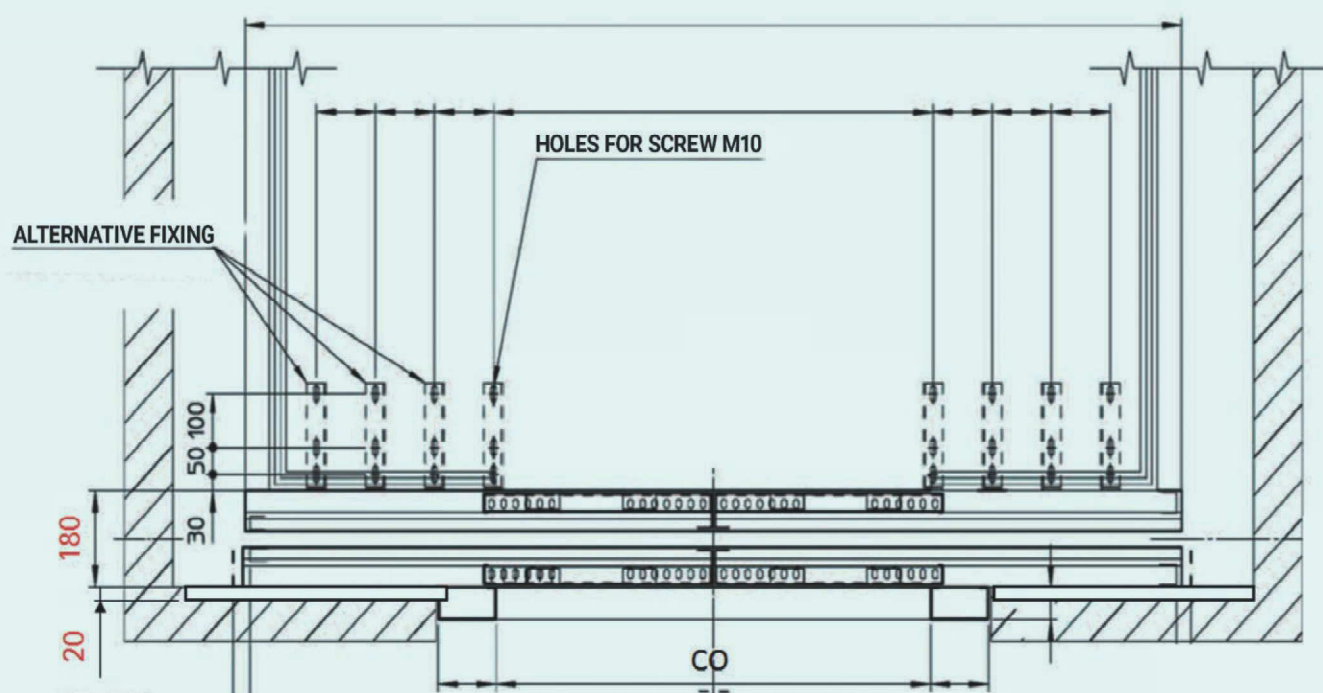


NETTUNO 3203

TYPE 01-02/U

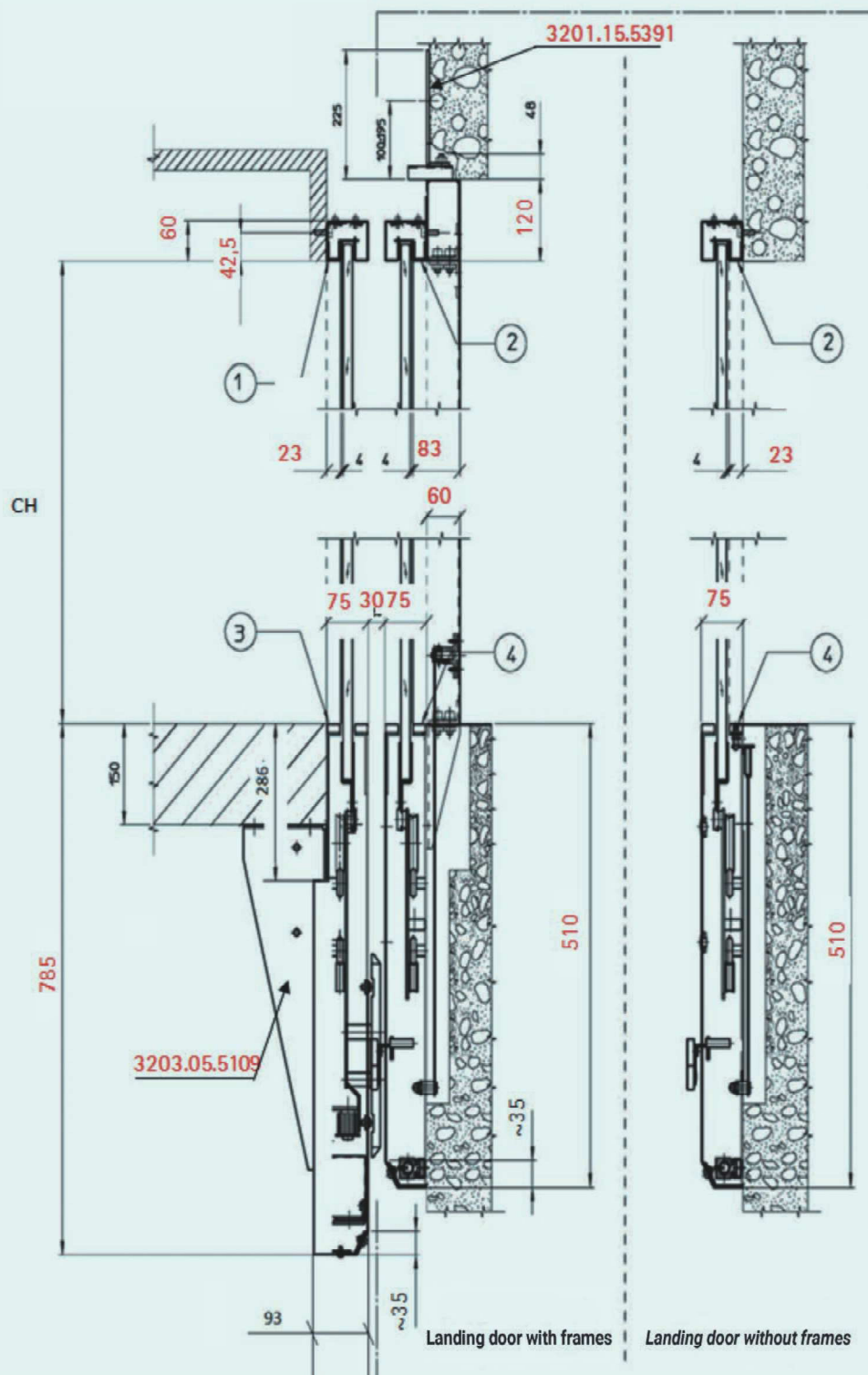
MAX. OVERALL DIMENSIONS OF THE CAR DOOR SUPPORT PLATE

NETTUNO 3203, 01-02/U



NETTUNO 3203

GLASS PANELS WITH VISIBLE AND HIDDEN TRIMS

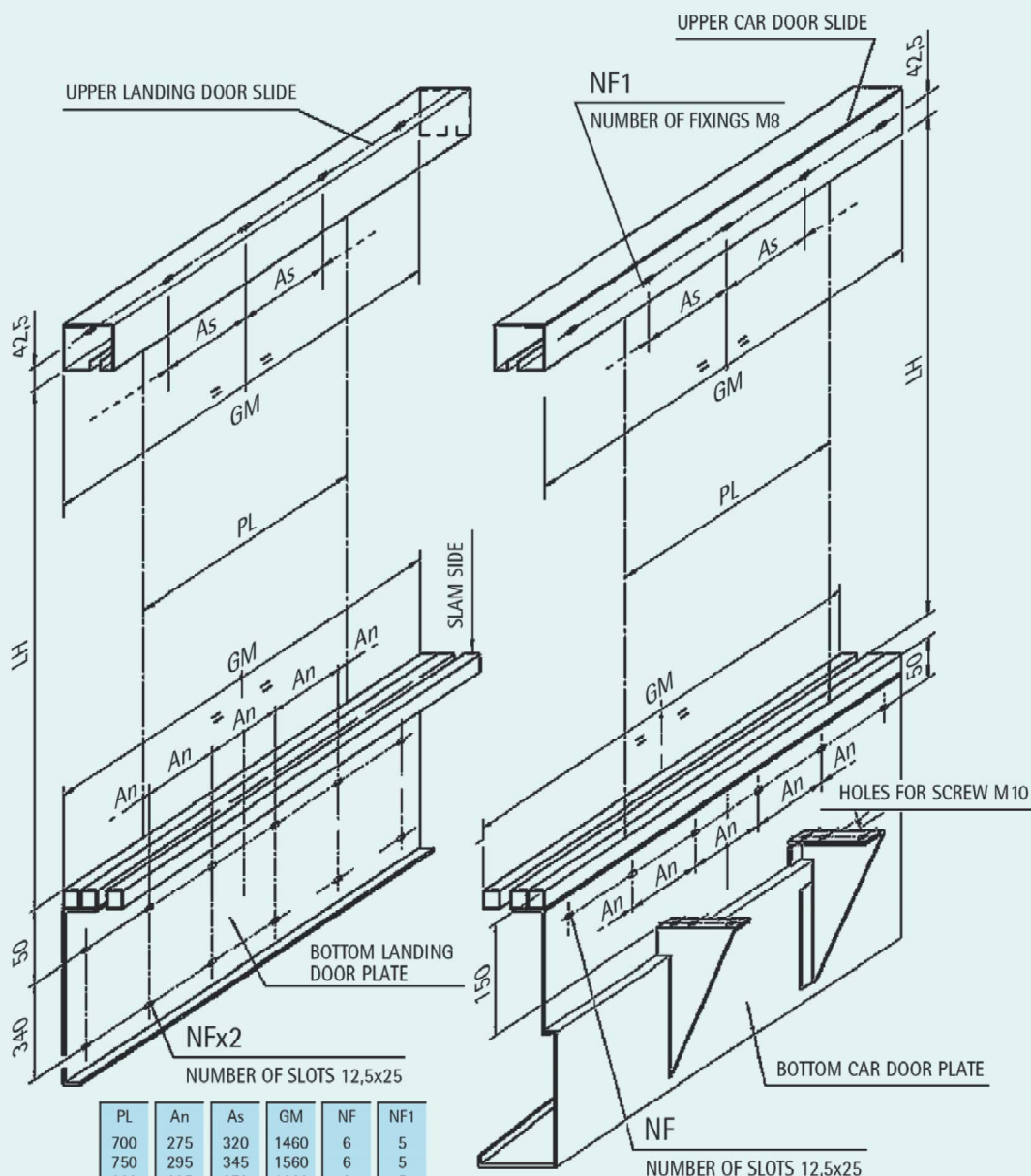


SHEET METAL PANELS / FRAMED GLASS PANELS



NETTUNO 3203

TWO PANEL CENTRE OPENING DOOR **01-02/U**

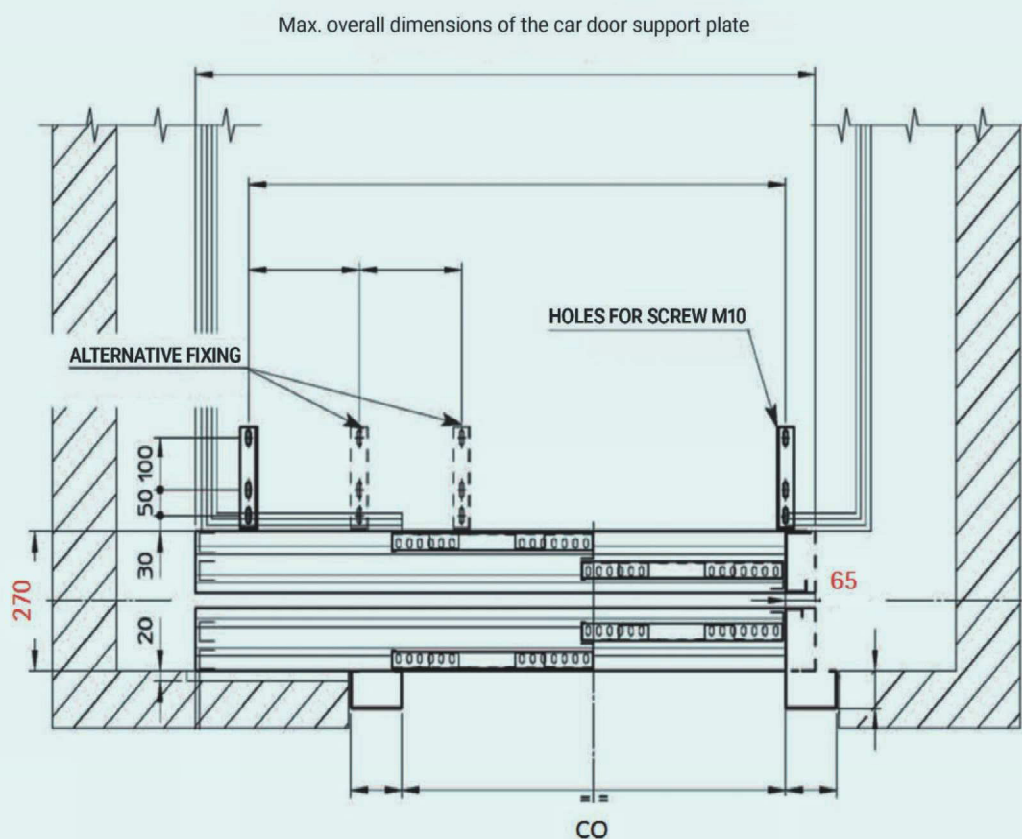
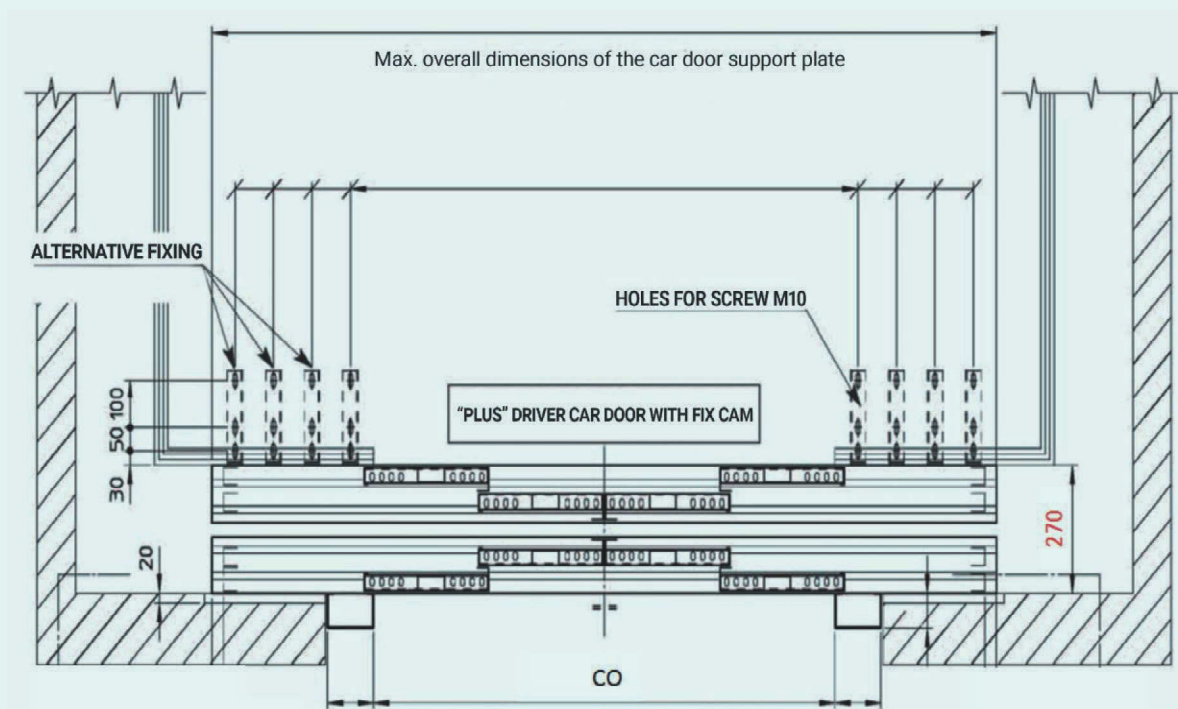


PL	An	As	GM	NF	NF1
700	275	320	1460	6	5
750	295	345	1560	6	5
800	225	370	1660	8	5
850	240	395	1760	8	5
900	255	420	1860	8	5
950	270	445	1960	8	5
1000	280	470	2060	8	5
1050	240	495	2160	10	5
1100	240	260	2260	10	9
1150	250	272,5	2360	10	9
1200	265	285	2460	10	9
1250	275	297,5	2560	10	9
1300	235	310	2660	12	9
1350	240	322,5	2760	12	9
1400	250	335	2860	12	9

NETTUNO 3203

TYPE 41-42/U + 11-12/U

MAX. OVERALL DIMENSIONS OF THE CAR DOOR SUPPORT PLATE



GLASS PANELS WITH VISIBLE AND HIDDEN TRIMS

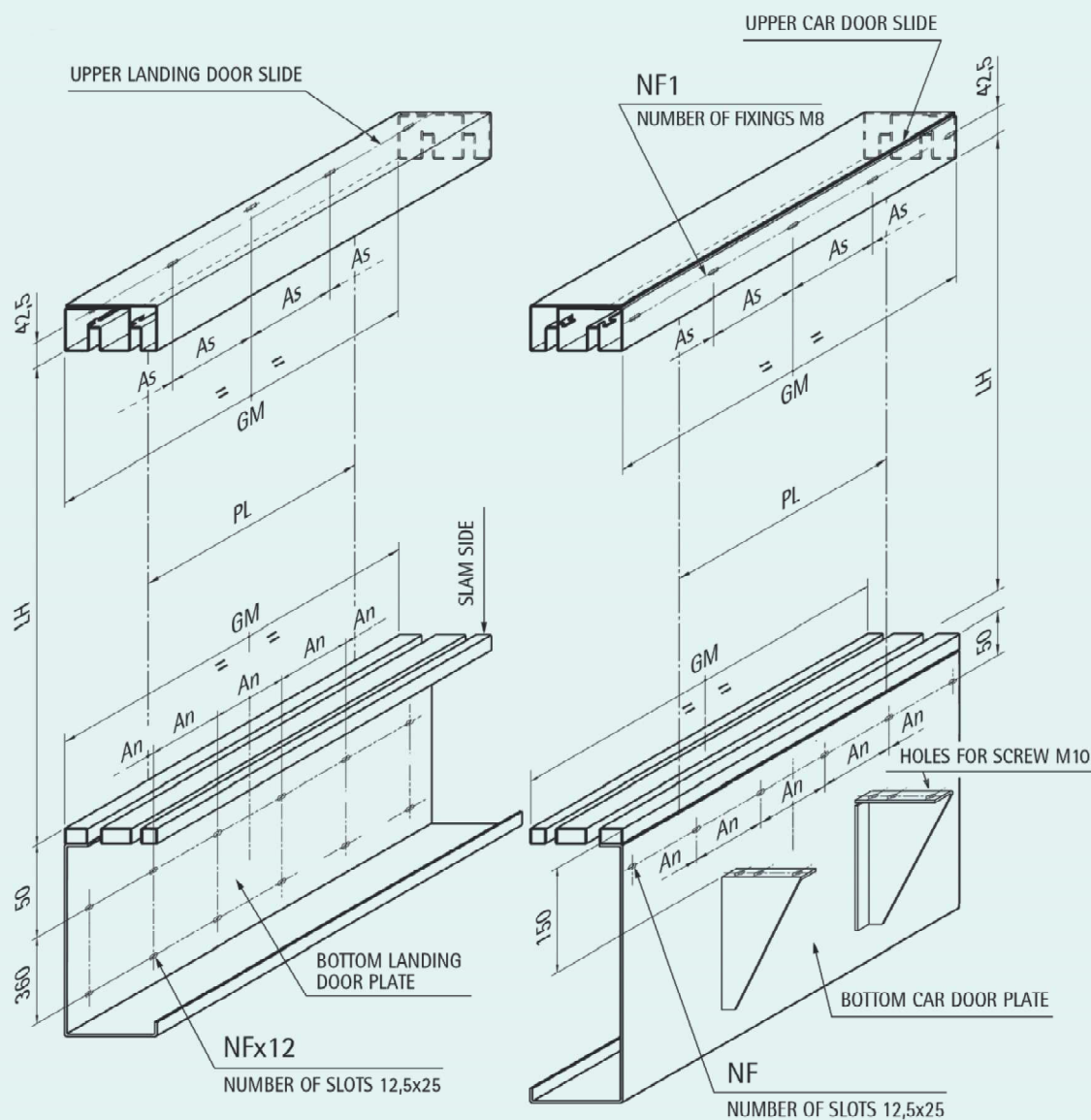


SHEET METAL PANELS / FRAMED GLASS PANELS



NETTUNO 3203

FOUR PANEL CENTRE OPENING DOOR 41-42/U



PL	An	As	GM	NF	NF1
750	240	240	1215	5	5
800	240	240	1290	5	5
850	240	240	1365	5	5
900	240	240	1440	6	6
950	240	240	1515	6	6
1000	240	240	1590	6	6
1050	240	240	1665	7	7
1100	240	240	1740	7	7
1150	240	240	1815	7	7
1200	275	400	1890	7	5
1250	275	400	1965	7	5
1300	300	400	2040	7	5
1350	300	450	2115	7	5
1400	300	450	2190	7	5

PL	An	As	GM	NF	NF1
1450	300	450	2265	7	5
1500	250	350	2340	9	7
1550	250	350	2415	9	7
1600	275	350	2490	9	7
1650	275	350	2565	9	7
1700	300	400	2640	9	7
1750	300	400	2715	9	7
1800	300	400	2790	9	7
1850	300	400	2865	9	7
1900	250	450	2940	11	7
1950	275	450	3015	11	7
2000	275	450	3090	11	7
2050	275	450	3165	11	7
2100	300	375	3240	11	9
2150	300	375	3315	11	9
2200	300	375	3390	11	9
2250	300	400	3465	11	9
2300	275	400	3540	13	9

PL	An	As	GM	NF	NF1
2350	275	400	3615	13	9
2400	275	400	3690	13	9
2450	275	425	3765	13	9
2500	300	425	3840	13	9
2550	300	450	3915	13	9
2600	300	450	3990	13	9
2650	300	450	4065	13	9
2700	275	375	4140	15	11
2750	275	375	4215	15	11
2800	275	400	4290	15	11
2850	300	400	4365	15	11
2900	300	400	4440	15	11
2950	300	425	4515	15	11
3000	300	425	4590	15	11
3050	300	425	4665	15	11
3100	275	425	4740	17	11
3150	275	450	4815	17	11
3200	275	450	4890	17	11

TWO PANEL SIDE OPENING DOOR 11-12/U

