

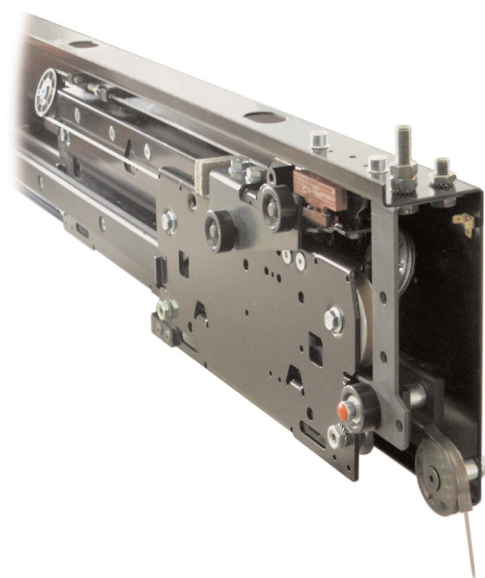
# Pegasus

Code **TC.2.002008.EN**

Version **C**

Date **20.06.2022**

## SELCOM FIRE-RESISTANT LANDING DOOR *PORTE DI PIANO RESISTENTI AL FUOCO SELCOM*



**EN81-58**  
**CLASS "EI"**

No part of this publication may be reproduced or translated, even in part, without prior written permission from WITTUR.

Subject to change without notice!

Questa pubblicazione non può essere riprodotta né tradotta, né interamente né in parte senza autorizzazione scritta della WITTUR.

Soggetto a modifica senza preavviso!

[info@wittur.com](mailto:info@wittur.com)  
[www.wittur.com](http://www.wittur.com)

© Copyright WITTUR 2022


# AUTOMATIC DOORS SERIES 3201-PEGASUS


## PORTE AUTOMATICHE SERIE 3201-PEGASUS

Code/Codice TC.2.002008.EN  
Version/Versione C  
Date/Data 20.06.2022  
Page/Pagina 0.1

### GENERAL INDEX

### INDICE GENERALE

TECHNICAL DATA		DATI TECNICI
1.1	Production Range	Gamma di produzione
 1.2	Supply of Disassembled Doors	Fornitura porte smontate
1.3	Landing Doors-Operators Arrangement	Accoppiamento operatori e sospensioni
1.4	Tables for Class "EI" Fire-resistant Doors Executions	Tabella per esecuzioni porte resistenti al fuoco classe "EI"
1.4.1	Tables for Class "EI" Fire-resistant Doors Executions	Tabella per esecuzioni porte resistenti al fuoco classe "EI"
1.4.2	Table for Shield Pro Execution - Centre Parting Doors	Tabella per Esecuzione Shield Pro - Porte ad Apertura Centrale
1.4.3	Table for Shield Pro Execution - Side Opening Landing Doors	Tabella per Esecuzione Shield Pro - Porte di Piano ad Apertura Laterale

TWO PANELS TELESCOPIC DOORS		PORTE TELESCOPICHE DUE ANTE
2.1	Two Panels Class "EI" Fire-resistant Telescopic Landing Door, Type 11/R-L C.O.=800÷1800, LH≤2700	Porta di piano due ante telescopica resistente al fuoco classe "EI", tipo 11/R-L PL=800÷1800, LH≤2700
2.1.t	Two Panels Class "EI" Fire-resistant Telescopic Landing Door, Type 11/R-L C.O.=800÷1800, LH≤2700 (Schedule)	Porta di piano due ante telescopica resistente al fuoco classe "EI", tipo 11/R-L PL=800÷1800, LH≤2700 (Tabella)
2.2	Two Panels Class "EI" Fire-resistant Telescopic Landing Door, Type 11/R-L C.O.=800÷1800, LH>2700	Porta di piano due ante telescopica resistente al fuoco classe "EI", tipo 11/R-L PL=800÷1800, LH>2700
 2.2.t	Two Panels Class "EI" Fire-resistant Telescopic Landing Door, Type 11/R-L C.O.=800÷1800, LH>2700 (Schedule)	Porta di piano due ante telescopica resistente al fuoco classe "EI", tipo 11/R-L PL=800÷1800, LH>2700 (Tabella)
2.3	Shaft Wall for Two Panels Class "EI" Fire-resistant Telescopic Door, Type 11/R-L	Vano muratura porta due ante telescopica resistente al fuoco classe "EI", tipo 11/R-L
2.4	Arrangement for two Panels Class "EI" Fire-resistant Telescopic Door, Type 11/R-L, LH≤2700	Accoppiamento per porta due ante telescopica resistente al fuoco classe "EI", tipo 11/R-L, LH≤2700
2.5	Arrangement for two Panels Class "EI" Fire-resistant Telescopic Door, Type 11/R-L, LH>2700	Accoppiamento per porta due ante telescopica resistente al fuoco classe "EI", tipo 11/R-L, LH>2700

TWO PANELS CENTRAL OPENING DOORS		PORTE CENTRALI DUE ANTE
3.1	Two Panels Class "EI" Fire-resistant Central Opening Landing Door, Type 01/C, C.O.=750÷1800	Porta di piano due ante opposte resistente al fuoco classe "EI", tipo 01/C PL=750÷1800
3.1.t	Two Panels Class "EI" Fire-resistant Central Opening Landing Door, Type 01/C, C.O.=750÷1800 (Schedule)	Porta di piano due ante opposte resistente al fuoco classe "EI", tipo 01/C PL=750÷1800 (Tabella)
3.2	Shaft Wall for Two Panels Class "EI" Fire-resistant Central Opening Door, Type 01/C	Vano muratura per porta due ante opposte resistente al fuoco classe "EI", tipo 01/C
3.3	Arrangement for Two Panels Class "EI" Fire-resistant Central Opening Door, Type 01-02/C	Accoppiamento per porta due ante opposte resistente al fuoco classe "EI", tipo 01-02/C

Whilst every care has been taken in preparation of this catalogue, no liability can be accepted for any errors or omissions.

Sebbene la preparazione di questo catalogo sia stata realizzata con ogni cura, nessuna responsabilità potrà essere accettata per errori od omissioni.

Subject to change without notice!

Soggetto a modifica senza preavviso!



# AUTOMATIC DOORS SERIES 3201-PEGASUS PORTE AUTOMATICHE SERIE 3201-PEGASUS

Code/Codice TC.2.002008.EN  
Version/Versione B  
Date/Data 26.07.2021  
Page/Pagina 0.2

## GENERAL INDEX INDICE GENERALE

THREE PANELS TELESCOPIC DOORS		PORTE TELESCOPICHE TRE ANTE
4.1	Three Panels Class "EI" Fire-resistant Telescopic Landing Door, Type 31/R-L, C.O. 900÷2100, LH≤2700	Porta di piano tre ante telescopica resistente al fuoco classe "EI", tipo 31/R-L PL 900÷2100, LH≤2700
4.1.t	Three Panels Class "EI" Fire-resistant Telescopic Landing Door, Type 31/R-L C.O. 900÷2100, LH≤2700 (Schedule)	Porta di piano tre ante telescopica resistente al fuoco classe "EI", tipo 31/R-L PL 900÷2100, LH≤2700 (Tabella)
4.2	Three Panels Class "EI" Fire-resistant Telescopic Landing Door, Type 31/R-L, C.O. 900÷2100, LH>2700	Porta di piano tre ante telescopica resistente al fuoco classe "EI", tipo 31/R-L PL 900÷2100, LH>2700
Mod. 4.2.t	Three Panels Class "EI" Fire-resistant Telescopic Landing Door, Type 31/R-L C.O. 900÷2100, LH>2700 (Schedule)	Porta di piano tre ante telescopica resistente al fuoco classe "EI", tipo 31/R-L PL 900÷2100, LH>2700 (Tabella)
4.3	Shaft Wall for Three Panels Class "EI" Fire-resistant Telescopic Door, Type 31/R-L	Vano muratura porta tre ante telescopica resistente al fuoco classe "EI", tipo 31/R-L
4.4	Arrangement for three Panels Class "EI" Fire-resistant Telescopic Door, Type 31-32/R-L, LH≤2700	Accoppiamento per porta tre ante telescopica resistente al fuoco classe "EI", tipo 31-32/R-L, LH≤2700
4.5	Arrangement for three Panels Class "EI" Fire-resistant Telescopic Door, Type 31-32/R-L, LH>2700	Accoppiamento per porta tre ante telescopica resistente al fuoco classe "EI", tipo 31-32/R-L, LH>2700
FOUR PANELS CENTRAL OPENING DOORS		PORTE TELESCOPICHE-CENTRALI QUATTRO ANTE
5.1	Four Panels Class "EI" Fire-resistant Central Opening Landing Door, Type 41/C C.O.=1300÷3200, LH≤2700	Porta di piano quattro ante opposte resistente al fuoco classe "EI", tipo 41/C PL=1300÷3200, LH≤2700
5.1.t	Four Panels Class "EI" Fire-resistant Central Opening Landing Door, Type 41/C C.O.=1300÷3200, LH≤2700 (Schedule)	Porta di piano quattro ante opposte resistente al fuoco classe "EI", tipo 41/C PL=1300÷3200, LH≤2700 (Tabella)
5.2	Four Panels Class "EI" Fire-resistant Central Opening Landing Door, Type 41/C C.O.=1300÷3200, LH>2700	Porta di piano quattro ante opposte resistente al fuoco classe "EI", tipo 41/C PL=1300÷3200, LH>2700
Mod. 5.2.t	Four Panels Class "EI" Fire-resistant Central Opening Landing Door, Type 41/C C.O.=1300÷3200, LH>2700 (Schedule)	Porta di piano quattro ante opposte resistente al fuoco classe "EI", tipo 41/C PL=1300÷3200, LH>2700 (Tabella)
5.3	Shaft Wall for Four Panels Class "EI" Fire-resistant Central Opening Door, Type 41/C	Vano muratura per porta quattro ante opposte resistente al fuoco classe "EI", tipo 41/C
5.4	Arrangement for four Panels Class "EI" Fire-resistant Central Opening Door, Type 41/C, LH≤2700	Accoppiamento per porta quattro ante opposte resistente al fuoco classe "EI", tipo 41/C, LH≤2700
5.5	Arrangement for four Panels Class "EI" Fire-resistant Central Opening Door, Type 41/C, LH>2700	Accoppiamento per porta quattro ante opposte resistente al fuoco classe "EI", tipo 41/C, LH>2700

Whilst every care has been taken in preparation of this catalogue, no liability can be accepted for any errors or omissions.

Sebbene la preparazione di questo catalogo sia stata realizzata con ogni cura, nessuna responsabilità potrà essere accettata per errori od omissioni.

Subject to change without notice!

Soggetto a modifica senza preavviso!



# AUTOMATIC DOORS SERIES 3201-PEGASUS PORTE AUTOMATICHE SERIE 3201-PEGASUS

Code/Codice TC.2.002008.EN  
Version/Versione B  
Date/Data 26.07.2021  
Page/Pagina 0.3

## GENERAL INDEX INDICE GENERALE



SIX PANELS CENTRE PARTING DOORS		PORTE TELESCOPICHE-CENTRALI SEI ANTE
6.1	Six Panels Class "EI" Fire-resistant Central Opening Landing Door, Type 61/C C.O.=1800÷3200, LH≤2700	Porta di piano sei ante opposte resistente al fuoco classe "EI", tipo 61/C PL=1800÷3200, LH≤2700
6.1.t	Six Panels Class "EI" Fire-resistant Central Opening Landing Door, Type 61/C C.O.=1800÷3200, LH≤2700 (Schedule)	Porta di piano sei ante opposte resistente al fuoco classe "EI", tipo 61/C PL=1800÷3200, LH≤2700 (Tabella)
6.2	Six Panels Class "EI" Fire-resistant Central Opening Landing Door, Type 61/C C.O.=2100÷3200, LH>2700	Porta di piano sei ante opposte resistente al fuoco classe "EI", tipo 61/C PL=2100÷3200, LH>2700
6.2.t	Six Panels Class "EI" Fire-resistant Central Opening Landing Door, Type 61/C C.O.=2100÷3200, LH>2700 (Schedule)	Porta di piano sei ante opposte resistente al fuoco classe "EI", tipo 61/C PL=2100÷3200, LH>2700 (Tabella)
6.3	Shaft Wall for Six Panels Class "EI" Fire-resistant Central Opening Door, Type 61/C	Vano muratura per porta sei ante opposte resistente al fuoco classe "EI", tipo 61/C
6.4	Arrangement for six Panels Class "EI" Fire-resistant Central Opening Door, Type 61/C, LH≤2700	Accoppiamento per porta sei ante opposte resistente al fuoco classe "EI", tipo 61/C, LH≤2700
6.5	Arrangement for six Panels Class "EI" Fire-resistant Central Opening Door, Type 61/C, LH>2700	Accoppiamento per porta sei ante opposte resistente al fuoco classe "EI", tipo 61/C, LH>2700
ONE PANEL TELESCOPIC DOORS		PORTE AD UN ANTA SCORREVOLE
7.1	One Panel Class "EI" Fire-resistant Landing Door, Type 71/R-L, C.O.=600÷1400	Porta di piano ad un'anta resistente al fuoco classe "EI", tipo 71/R-L PL=600÷1400
7.1.t	One Panel Class "EI" Fire-resistant Landing Door, Type 71/R-L, C.O.=600÷1400 (Schedule)	Porta di piano ad un'anta resistente al fuoco classe "EI", tipo 71/R-L PL=600÷1400 (Tabella)
7.2	Shaft Wall for One Panel Class "EI" Fire-resistant Door, Type 71/R-L	Vano muratura per porta ad un'anta resistente al fuoco classe "EI", tipo 71/R-L
7.3	Arrangement for one Panel Class "EI" Fire-resistant Door, Type 71-72/R-L	Accoppiamento per porta ad un'anta resistente al fuoco classe "EI", tipo 71-72/R-L
REGULATIONS AND ASSEMBLING		REGOLAZIONI E MONTAGGI
8.1	Assembling of Top Frame Disassembled	Montaggio stipiti smontabili
GLOSSARY		GLOSSARIO
PL	Clear Opening	Passaggio Libero
LH	Clear Height	Luce Altezza
GM	Mechanism Maximum Overall Dimension	Ingombro Massimo Meccanismo
GW	Panels Maximum Overall Dimension	Ingombro Massimo Ante Aperte
DF	Frame Depth	Profondità Stipite
WS	Sill Length	Ingombro Soglie
SP	Top Frame Height	Altezza Stipite Superiore
SF, SB	Side Frame Width	Larghezza Stipite Laterale
CF1	Infill Plate Dimension	Dimensioni Coprifessura

Whilst every care has been taken in preparation of this catalogue, no liability can be accepted for any errors or omissions.

Sebbene la preparazione di questo catalogo sia stata realizzata con ogni cura, nessuna responsabilità potrà essere accettata per errori od omissioni.





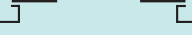

Subject to change without notice!

Soggetto a modifica senza preavviso!

# AUTOMATIC DOORS SERIES 3201-PEGASUS PORTE AUTOMATICHE SERIE 3201-PEGASUS

Code/Codice TC.2.002008.EN  
Version/Versione /  
Date/Data 12.10.2010  
Page/Pagina 1.1

## PRODUCTION RANGE GAMMA DI PRODUZIONE

POS.	SERIE	LANDING DOORS PORTE DI PIANO		CAR DOORS PORTE DI CABINA		C.O. PL mm.		LH mm.	
		TYPE TIPO	ILLUSTRATION RAPPRESENTAZIONE	TYPE TIPO	ILLUSTRATION RAPPRESENTAZIONE	Min.	Max.	Min.	Max.
DOOR WITH OPERATOR ABOVE PORTA CON MECCANISMO SOPRA LA CABINA	3201	01/C		02/C		750	1800	2000	NOTE: MAXIMUM CLEAR OPENING HEIGHT 3500 mm. - SUBJECT TO CLEAR OPENING WIDTH N.B.: LA MASSIMA APERTURA IN ALTEZZA E' 3500 mm. DEVE ESSERE DEFINITA OGNI VOLTA IN RELAZIONE AL PASSAGGIO LIBERO DELLA PORTA
		11/R		12/R		800	1800	2000	
		11/L		12/L					
		31/R		32/R		900	2100	2000	
		31/L		32/L					
		41/C		42/C		1300	3200	2000	
		61/C		62/C		1800	3200	2000	
		71/R		72/R		600	1400	2000	
		71/L		72/L					



# AUTOMATIC DOORS SERIES 3201-PEGASUS PORTE AUTOMATICHE SERIE 3201-PEGASUS

Code/Codice TC.2.002008.EN  
Version/Versione C  
Date/Data 20.06.2022  
Page/Pagina 1.2

## SUPPLY OF DISASSEMBLED DOORS FORNITURA PORTE SMONTATE

Typ 71/R-L

LH	2000	2100	2200	2300	2400	2500	2550	2600	2700	
PL										▶
600										
700										
800										
900										
950										
1000										
1100										
1200										
1300										
1400										

Typ 01/C

LH	2000	2100	2200	2300	2400	2500	2550	2600	2700	
PL										▶
750										
800										
900										
950										
1000										
1100										
1200										
1300										
2100										

Typ 11/R-L

LH	2000	2100	2200	2300	2400	2500	2550	2600	2700	
PL										▶
800										
900										
1000										
1100										
1200										
1250										
1300										
1400										
1500										
1600										
2100										

Typ 31/R-L

LH	2000	2350	2400	2450	2500	2550	2600	2650	
PL									▶
900									
950									
1000									
1050									
1300									
1350									
1400									
1450									
1500									
2500									

Typ 41/C

LH	2000	2400	2500	2550	2600	2650	2700	2750	
PL									▶
1300									
1350									
1400									
1450									
1500									
1600									
1700									
1800									
1900									
2000									
3600									

Typ 61/C

LH	2000	2350	2400	2450	2500	2550	2600	2650	
PL									▶
1800									
1850									
1900									
1950									
2000									
2050									
2100									
2200									
2300									
2400									
3600									



DOORS SUPPLIED DISASSEMBLED  
PORTE FORNITE SMONTATE



COMPLETE (On request disassembled)  
COMPLETE (Smontate a richiesta)



DOORS IMPOSSIBLE TO BE MANUFACTURED  
PORTE NON FATTIBILI



DOORS SUPPLIED DISASSEMBLED - ON REQUEST: ONLY FRAMES ASSEMBLED (SILL, PANELS AND MECHANISM ALWAYS DISASSEMBLED)  
PORTE FORNITE SMONTATE - A RICHIESTA: SOLO STIPITI ASSEMBLATI (SOGLIA, ANTE E MECCANISMO SEMPRE SMONTATI)

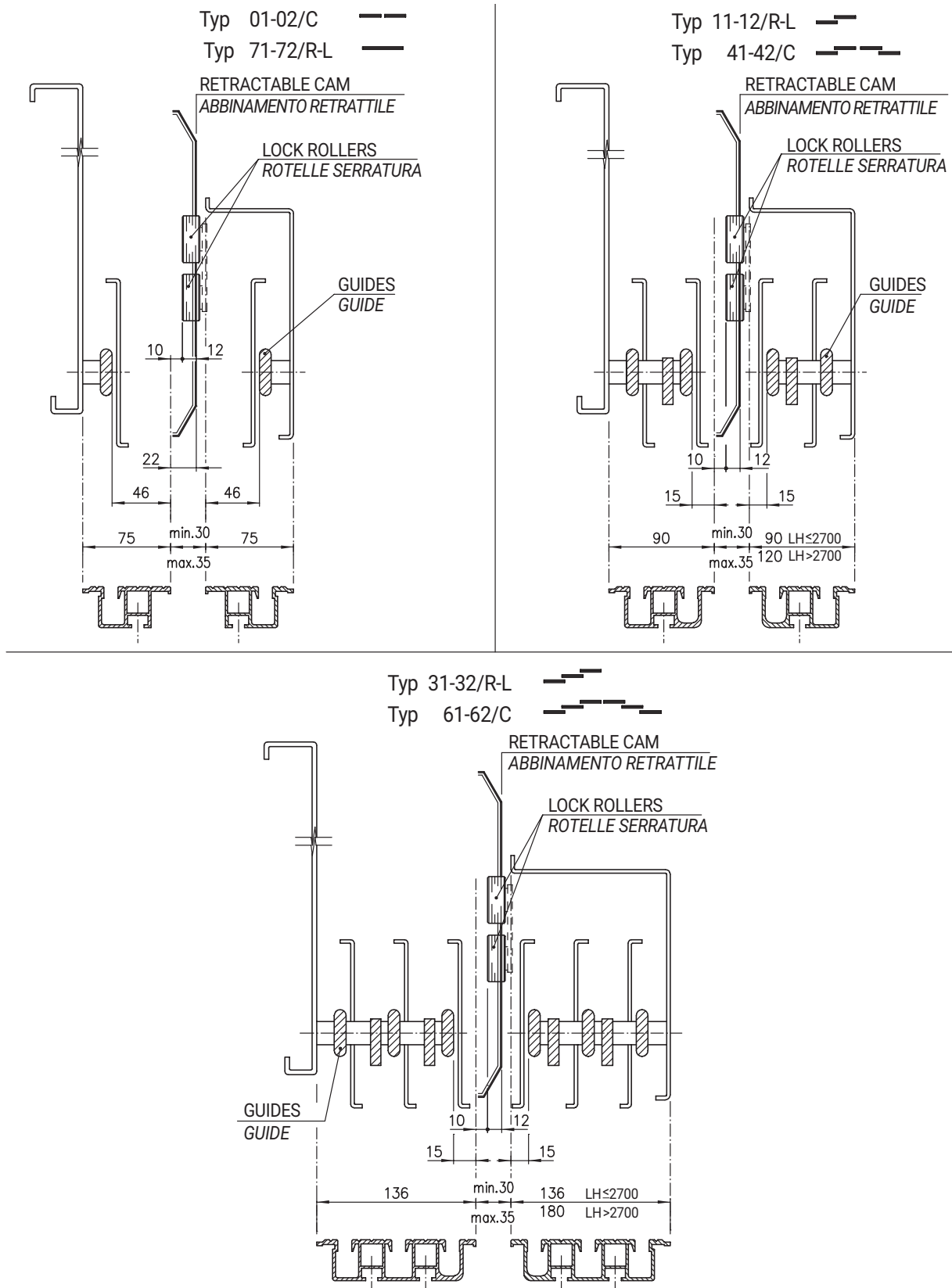
Note: All the doors with big-frames having the overall width dimension > 1600 mm (PL+SB+SL or PL+2SL) or the overall height dimension > 2800 mm will be executed in disassemblable version and supplied disassembled. If at least one lateral frame is > 300 mm, doors will be executed in disassemblable version and supplied according to the tables.

Attenzione: Inoltre, saranno eseguite e fornite in versione smontata tutte le porte con portali aventi la misura d'ingombro laterale (PL+SB+SL oppure PL+2SL) > 1600 mm, oppure la misura d'ingombro in altezza > 2800 mm. Nei casi in cui almeno uno stipite laterale sia > 300 mm le porte saranno realizzate in versione smontabile e fornite secondo le tabelle.

# AUTOMATIC DOORS SERIES 3201-PEGASUS PORTE AUTOMATICHE SERIE 3201-PEGASUS

Code/Codice TC.2.002008.EN  
Version/Versione /  
Date/Data 12.10.2010  
Page/Pagina 1.3

## LANDING DOORS-OPERATORS ARRANGEMENT ACCOPIAMENTO OPERATORI E SOSPENSIONI



# AUTOMATIC DOORS SERIES 3201-PEGASUS

## PORTE AUTOMATICHE SERIE 3201-PEGASUS

Code/Codice TC.2.002008.EN  
Version/Versione A  
Date/Data 26.01.2012  
Page/Pagina 1.4

TABLES FOR CLASS "EI" FIRE-RESISTANT DOORS EXECUTION  
TABELLE PER ESECUZIONE PORTE RESISTENTI AL FUOCO CLASSE "EI"

LH	2000	3150	3200	3250	3300	3350	3400	3450	3500
PL	800								
850									
900									
950									
1000									
1050									
1100									
1800									

TY 11/R-L



DOORS IMPOSSIBLE TO BE MANUFACTURED  
PORTE NON FATTIBILI

LH	2000	2350	2400	2450	2500	2550	2600	2650	2700	2750	2800	2850	2900	2950	3000	3050	3100	3150	3200	3250	3300	3350	3400	3450	3500
PL	900																								
950																									
1000																									
1050																									
1100																									
1150																									
1200																									
1250																									
1300																									
1350																									
1400																									
1450																									
1500																									
1600																									
2100																									

TY 31/R-L



DOORS IMPOSSIBLE TO BE MANUFACTURED  
PORTE NON FATTIBILI

LH	2000	3150	3200	3250	3300	3350	3400	3450	3500
PL	600								
650									
700									
750									
800									
850									
900									
1400									

TY 71/R-L

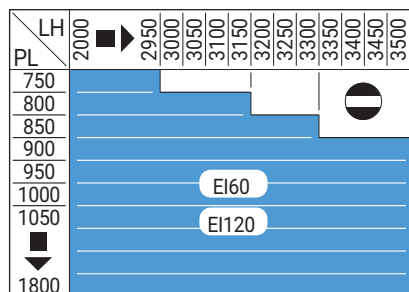


# AUTOMATIC DOORS SERIES 3201-PEGASUS PORTE AUTOMATICHE SERIE 3201-PEGASUS

Code/Codice TC.2.002008.EN  
Version/Versione A  
Date/Data 26.01.2012  
Page/Pagina 1.4.1

## TABLES FOR CLASS "EI" FIRE-RESISTANT DOORS EXECUTION

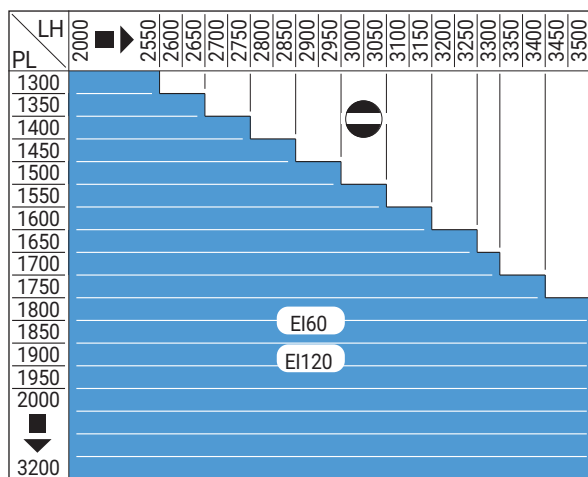
## TABELLE PER ESECUZIONE PORTE RESISTENTI AL FUOCO CLASSE "EI"



TY 01/C — —



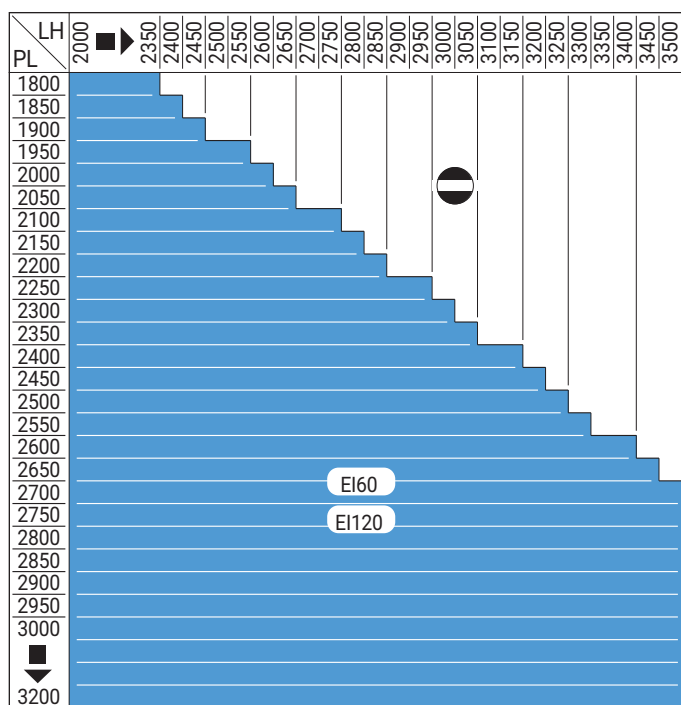
DOORS IMPOSSIBLE TO BE MANUFACTURED  
PORTE NON FATTIBILI



TY 41/C — — —



DOORS IMPOSSIBLE TO BE MANUFACTURED  
PORTE NON FATTIBILI



TY 61/C — — —



DOORS IMPOSSIBLE TO BE MANUFACTURED  
PORTE NON FATTIBILI

# AUTOMATIC DOORS SERIES 3201-PEGASUS

## PORTE AUTOMATICHE SERIE 3201-PEGASUS

Code/Codice TC.2.002008.EN  
Version/Versione B  
Date/Data 26.07.2021  
Page/Pagina 1.4.2

### TABLE FOR SHIELD PRO EXECUTION - CENTRE PARTING DOORS

### TABELLA PER ESECUZIONE SHIELD PRO - PORTE AD APERTURA CENTRALE

PL \ LH	2000	2050	2100	2150	2200	2250	2300	2350	2400	2450	2500	2550	2600	2650	2700	2750	2800	2850	2900	2950	3000	3050	3100	3150	3200	3250	3300	3350	3400	3450	3500
750																															
800																															
850																															
900																															
950 ÷ 1400																															
1450 ÷ 1800																															

#### TY 01/C — —

- TESTED DOORS  
PORTE TESTATE
- ASK TECHNICAL DEPT.  
FOR FEASIBILITY  
CHIEDERE LA FATTIBILITA'  
ALL'UFFICIO TECNICO
- NOT FEASIBLE DOORS  
PORTE NON FATTIBILI

PL \ LH	2000	2050	2100	2150	2200	2250	2300	2350	2400	2450	2500	2550	2600	2650	2700	2750	2800	2850	2900	2950	3000	3050	3100	3150	3200	3250	3300	3350	3400	3450	3500
1300																															
1350																															
1400																															
1450																															
1500																															
1550																															
1600																															
1650																															
1700																															
1750																															
1800																															
1850 ÷ 2800																															
2800 ÷ 3200																															

#### TY 41/C — — —

- TESTED DOORS  
PORTE TESTATE
- ASK TECHNICAL DEPT.  
FOR FEASIBILITY  
CHIEDERE LA FATTIBILITA'  
ALL'UFFICIO TECNICO
- NOT FEASIBLE DOORS  
PORTE NON FATTIBILI

# AUTOMATIC DOORS SERIES 3201-PEGASUS

## PORTE AUTOMATICHE SERIE 3201-PEGASUS

Code/Codice TC.2.002008.EN  
Version/Versione B  
Date/Data 26.07.2021  
Page/Pagina 1.4.3

TABLE FOR SHIELD PRO EXECUTION - SIDE OPENING LANDING DOORS  
TABELLA PER ESECUZIONE SHIELD PRO - PORTE DI PIANO AD APERTURA LATERALE

PL \ LH	2000	2050	2100	2150	2200	2250	2300	2350	2400	2450	2500	2550	2600	2650	2700	2750	2800	2850	2900	2950	3000	3050	3100	3150	3200	3250	3300	3350	3400	3450	3500
800																															
850																															
900																															
950÷1400																															
1450÷1800																															

### TY 11/R-L

TESTED DOORS  
PORTE TESTATE

ASK TECHNICAL DEPT.  
FOR FEASIBILITY  
CHIEDERE LA FATTIBILITA'  
ALL'UFFICIO TECNICO

NOT FEASIBLE DOORS  
PORTE NON FATTIBILI

PL \ LH	2000	2050	2100	2150	2200	2250	2300	2350	2400	2450	2500	2550	2600	2650	2700	2750	2800	2850	2900	2950	3000	3050	3100	3150	3200	3250	3300	3350	3400	3450	3500
900																															
950																															
1000																															
1050																															
1100																															
1150																															
1200																															
1250																															
1300																															
1350																															
1400																															
1450÷2100																															

### TY 31/R-L

TESTED DOORS  
PORTE TESTATE

ASK TECHNICAL DEPT.  
FOR FEASIBILITY  
CHIEDERE LA FATTIBILITA'  
ALL'UFFICIO TECNICO

NOT FEASIBLE DOORS  
PORTE NON FATTIBILI





# AUTOMATIC DOORS SERIES 3201-PEGASUS PORTE AUTOMATICHE SERIE 3201-PEGASUS

Code/Codice TC.2.002008.EN  
Version/Versione A  
Date/Data 26.01.2012  
Page/Pagina 2.1.t

TWO PANELS CLASS "EI" FIRE-RESISTANT TEL. LANDING DOOR, TYPE 11/R-L PL=800÷1800, LH≤2700  
PORTA DI PIANO 2 ANTE TEL. RESISTENTE AL FUOCO CLASSE "EI", TIPO 11/R-L PL=800÷1800, LH≤2700

PL	GM	GW	As1	As2	As3	As4
800	1248	1246	239	670		
850	1373	1321	255	720		
900	1423	1396	272	770	/	
950	1473	1471	289	820		
1000	1598	1546	305	870		
1050	1648	1621	322	606	920	
1100	1698	1696	339	639	970	
1150	1823	1771	355	673	1020	
1200	1873	1846	342	706	1070	
1250	1923	1921	359	739	1120	
1300	2048	1996	375	773	1170	
1350	2098	2071	392	806	1220	/
1400	2148	2146	409	839	1270	
1450	2273	2221	425	873	1320	
1500	2323	2296	442	906	1370	
1550	2373	2371	459	939	1420	
1600	2498	2446	475	973	1470	
1650	2548	2521	492	1006	1520	
1700	2598	2596		1035	1570	
1750	2723	2671	500	1060	1620	
1800	2773	2746		890	1280	1670

LH	ST1	ST2
2000	292	
2050	317	
2100	342	/
2150	367	
2200	392	
2250		
2300		
2350		
2400		
2450	307	222
2500		
2550		
2600		
2650		
2700		

FOR THE CERTIFIED DIMENSIONS SEE PAGE 1.4  
PER LE DIMENSIONI CERTIFICATE VEDERE PAG. 1.4

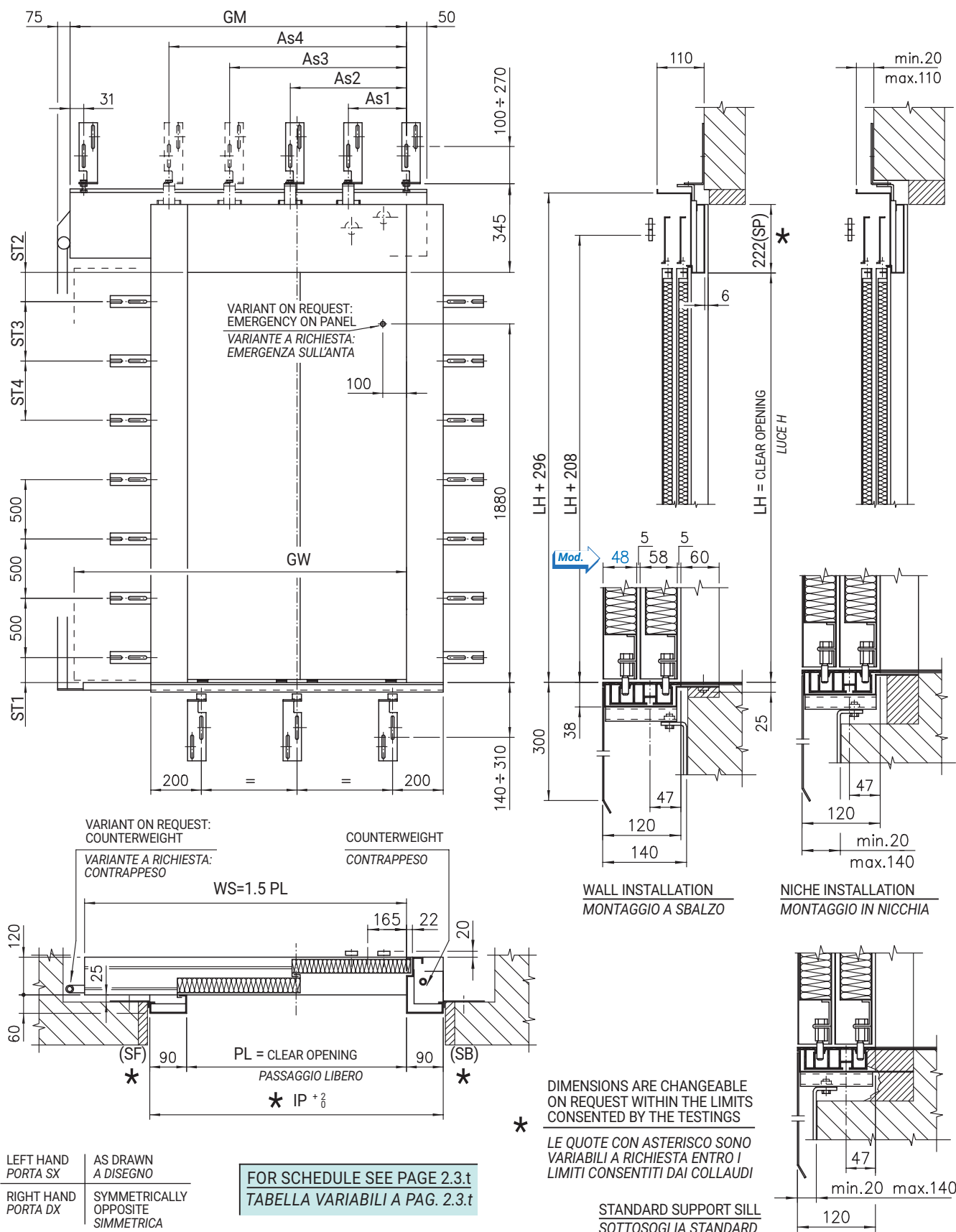
	DIMENSIONS DIMENSIONI	CLASS CLASSE
PL	800 ÷ 1800	EI120 EI60
LH	2000 ÷ 2700	EI120 EI60
SP	50 ÷ 300 50 ÷ 300 50 ÷ 750 **	EI120 EI60
SB	50 ÷ 95 50 ÷ 300 50 ÷ 750 **	EI120 EI60
SF	50 ÷ 95 50 ÷ 300 50 ÷ 750 **	EI120 EI60

\*\* ONLY FOR PL≤1600 AND LH≤2500  
SOLO PER PL≤1600 E LH≤2500

# AUTOMATIC DOORS SERIES 3201-PEGASUS PORTE AUTOMATICHE SERIE 3201-PEGASUS

Code/Codice TC.2.002008.EN  
Version/Versione C  
Date/Data 20.06.2022  
Page/Pagina 2.2

TWO PANELS CLASS "EI" FIRE-RESISTANT TEL. LANDING DOOR, TYPE 11/R-L PL=800÷1800, LH>2700  
PORTA DI PIANO 2 ANTE TEL. RESISTENTE AL FUOCO CLASSE "EI", TIPO 11/R-L PL=800÷1800, LH>2700







# AUTOMATIC DOORS SERIES 3201-PEGASUS PORTE AUTOMATICHE SERIE 3201-PEGASUS

Code/Codice TC.2.002008.EN  
Version/Versione A  
Date/Data 26.01.2012  
Page/Pagina 2.2.t

TWO PANELS CLASS "EI" FIRE-RESISTANT TEL. LANDING DOOR, TYPE 11/R-L PL=800÷1800, LH>2700  
PORTA DI PIANO 2 ANTE TEL. RESISTENTE AL FUOCO CLASSE "EI", TIPO 11/R-L PL=800÷1800, LH>2700

PL	GM	GW	As1	As2	As3	As4
800	1248	1246	239	670		
850	1373	1321	255	720		
900	1423	1396	272	770	/	
950	1473	1471	289	820		
1000	1598	1546	305	870		
1050	1648	1621	322	606	920	
1100	1698	1696	339	639	970	
1150	1823	1771	355	673	1020	
1200	1873	1846	342	706	1070	
1250	1923	1921	359	739	1120	
1300	2048	1996	375	773	1170	
1350	2098	2071	392	806	1220	/
1400	2148	2146	409	839	1270	
1450	2273	2221	425	873	1320	
1500	2323	2296	442	906	1370	
1550	2373	2371	459	939	1420	
1600	2498	2446	475	973	1470	
1650	2548	2521	492	1006	1520	
1700	2598	2596		1035	1570	
1750	2723	2671	500	1060	1620	
1800	2773	2746		890	1280	1670

LH	ST1	ST2	ST3	ST4
2750				
2800			/	
2850				
2900				
2950				
3000				
3050				
3100	307	222		/
3150				
3200			500	
3250				
3300				
3350				
3400				
3450				500
3500				

FOR THE CERTIFIED DIMENSIONS SEE PAGE 1.4  
PER LE DIMENSIONI CERTIFICATE VEDERE PAG. 1.4

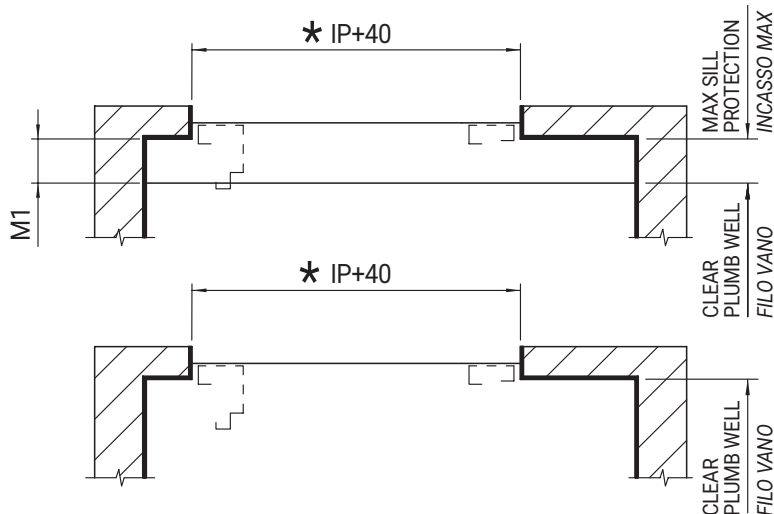
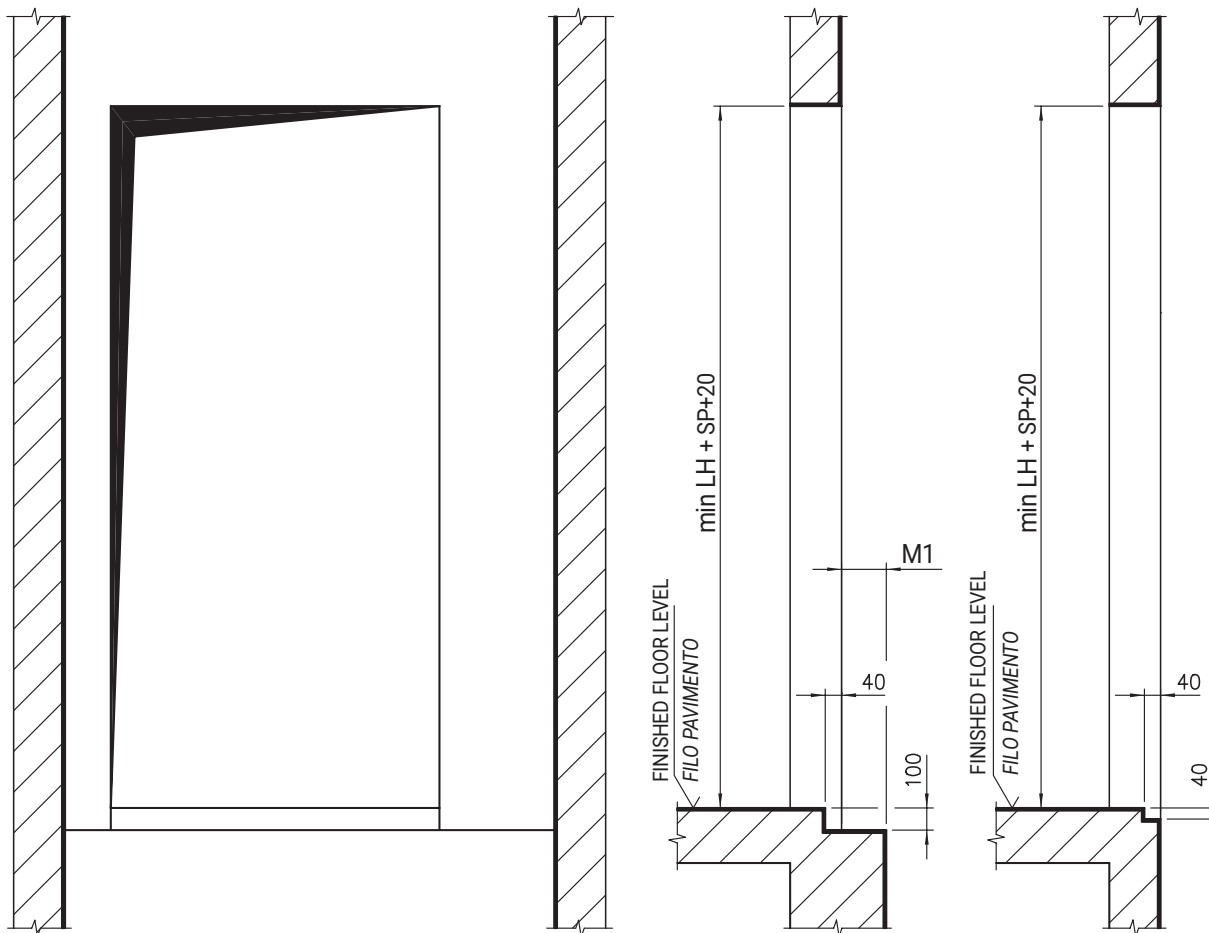
	DIMENSIONS DIMENSIONI	CLASS CLASSE
PL	800 ÷ 1800	EI120 EI60
LH	2750 ÷ 3500	EI120 EI60
SP	50 ÷ 300	EI120 EI60
SB	50 ÷ 95 50 ÷ 300	EI120 EI60
SF	50 ÷ 95 50 ÷ 300	EI120 EI60

# AUTOMATIC DOORS SERIES 3201-PEGASUS PORTE AUTOMATICHE SERIE 3201-PEGASUS

Code/Codice TC.2.002008.EN  
Version/Versione /  
Date/Data 12.10.2010  
Page/Pagina 2.3

SHAFT WALL FOR TWO PANELS CLASS "EI" FIRE-RESISTANT TELESCOPIC DOOR, TYPE 11/R-L

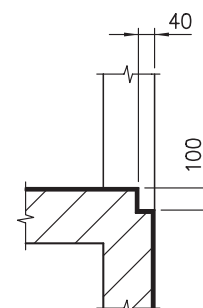
VANO MURATURA PER PORTA 2 ANTE TELESCOPICA RESISTENTE AL FUOCO CLASSE "EI", TIPO 11/R-L



NICHE INSTALLATION WITH  
STANDARD AND TYPE "BERLINO"  
SUPPORT SILL  
MONTAGGIO IN NICCHIA CON  
SOTTOSOGLIA STANDARD E  
TIPO "BERLINO"

LH	M1
≤ 2700	max. 90
> 2700	max. 120

WALL INSTALLATION WITH  
TYPE "BERLINO" SUPPORT SILL  
MONTAGGIO A SBALZO CON  
SOTTOSOGLIA TIPO "BERLINO"



WALL INSTALLATION WITH  
STANDARD SUPPORT SILL  
MONTAGGIO A SBALZO CON  
SOTTOSOGLIA STANDARD

DIMENSIONS ARE CHANGEABLE  
ON REQUEST WITHIN THE LIMITS  
CONSENTED BY THE TESTINGS

\* LE QUOTE CON ASTERISCO SONO  
VARIABILI A RICHIESTA ENTRO I  
LIMITI CONSENTITI DAI COLLAUDI

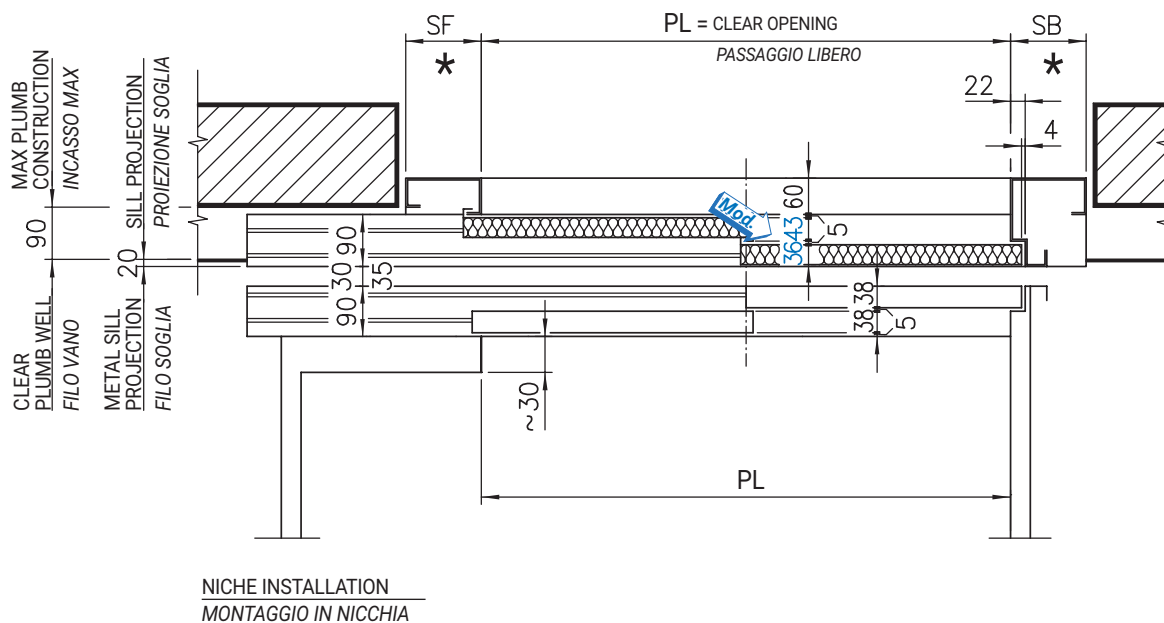
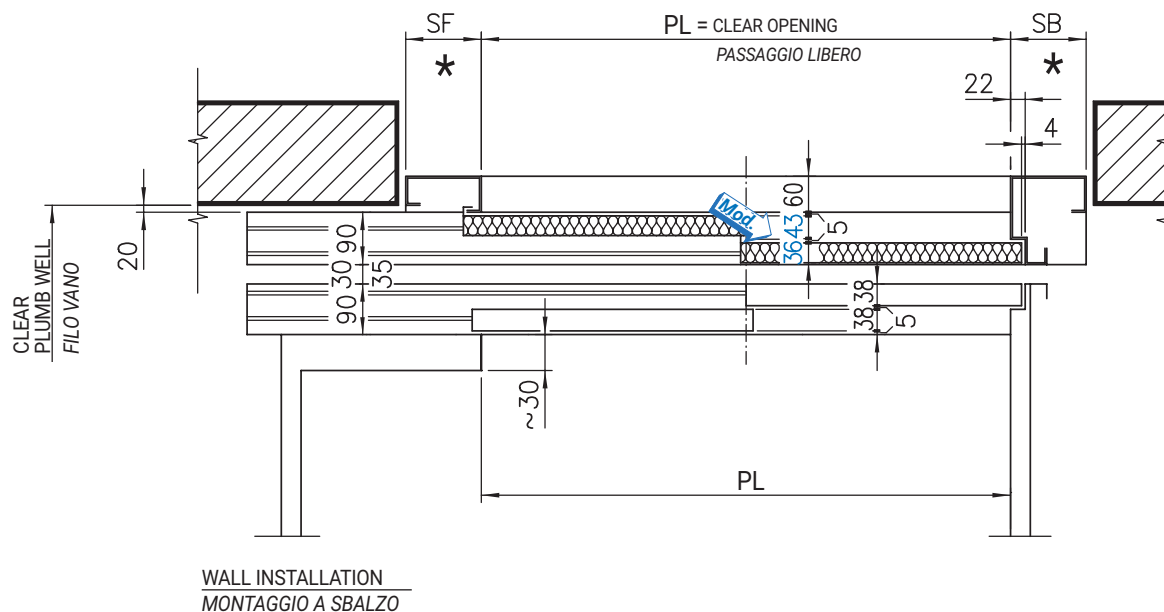
LEFT HAND  
PORTA SX AS DRAWN  
A DISEGNO  
RIGHT HAND  
PORTA DX SYMMETRICALLY  
OPPOSITE  
SIMMETRICA

# AUTOMATIC DOORS SERIES 3201-PEGASUS

## PORTE AUTOMATICHE SERIE 3201-PEGASUS

Code/Codice TC.2.002008.EN  
Version/Versione C  
Date/Data 20.06.2022  
Page/Pagina 2.4

ARRANGEMENT FOR TWO PANELS CLASS "EI" FIRE-RESISTANT TEL. DOOR, TYPE 11-12/R-L, LH≤2700  
ACCOPIAMENTO PORTA 2 ANTE TEL. RESISTENTE AL FUOCO CLASSE "EI", TIPO 11-12/R-L, LH≤2700



\* DIMENSIONS ARE CHANGEABLE ON REQUEST WITHIN THE LIMITS CONSENTED BY THE TESTINGS  
LE QUOTE CON ASTERISCO SONO VARIABILI A RICHIESTA ENTRO I LIMITI CONSENTITI DAI COLLAUDI

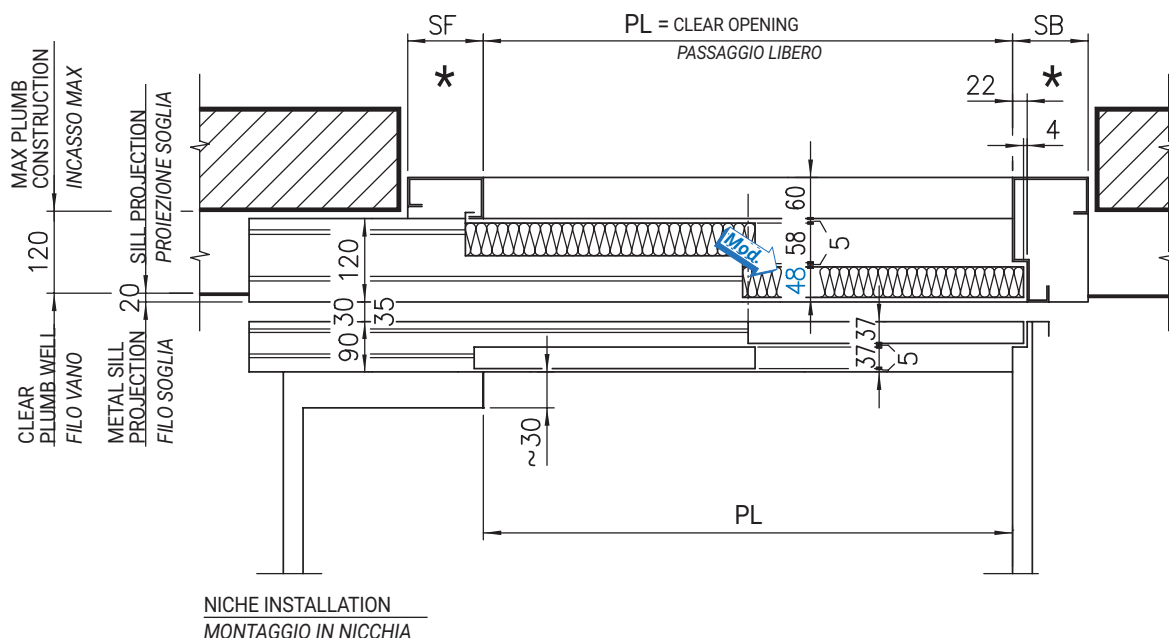
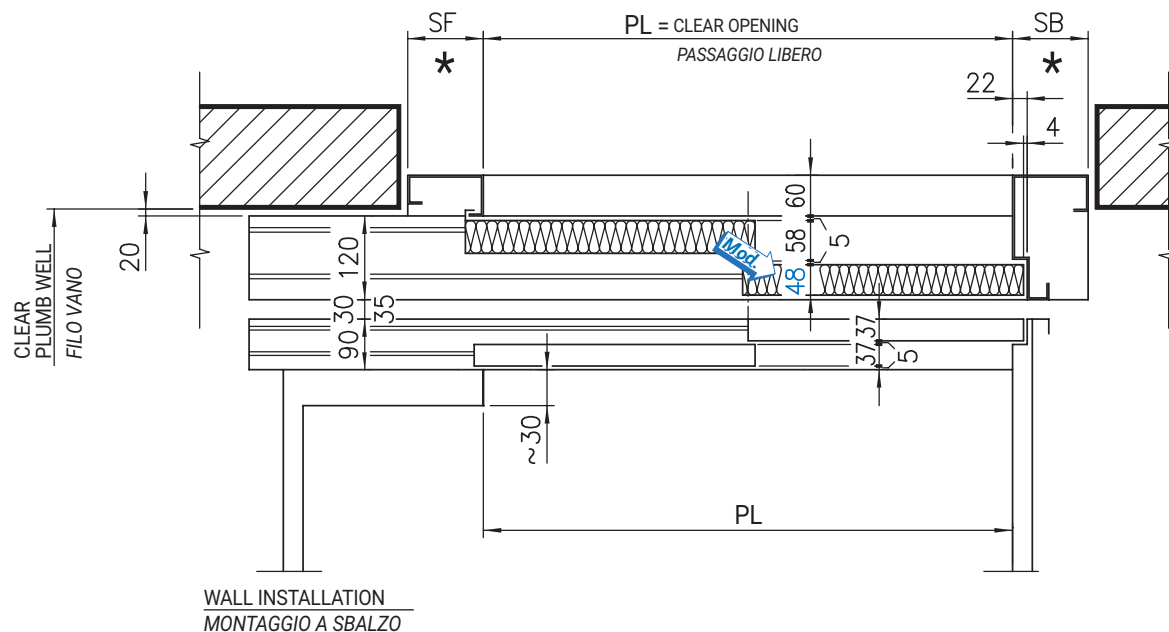
LEFT HAND PORTA SX	AS DRAWN A DISEGNO
RIGHT HAND PORTA DX	SYMMETRICALLY OPPOSITE SIMMETRICA

# AUTOMATIC DOORS SERIES 3201-PEGASUS

## PORTE AUTOMATICHE SERIE 3201-PEGASUS

Code/Codice TC.2.002008.EN  
Version/Versione C  
Date/Data 20.06.2022  
Page/Pagina 2.5

ARRANGEMENT FOR TWO PANELS CLASS "EI" FIRE-RESISTANT TEL. DOOR, TYPE 11-12/R-L, LH>2700  
ACCOPPIAMENTO PORTA 2 ANTE TEL. RESISTENTE AL FUOCO CLASSE "EI", TIPO 11-12/R-L, LH>2700



\* DIMENSIONS ARE CHANGEABLE ON REQUEST WITHIN THE LIMITS CONSENTED BY THE TESTINGS  
LE QUOTE CON ASTERISCO SONO VARIABILI A RICHIESTA ENTRO I LIMITI CONSENTITI DAI COLLAUDI

LEFT HAND PORTA SX	AS DRAWN A DISEGNO
RIGHT HAND PORTA DX	SYMMETRICALLY OPPOSITE SIMMETRICA





# AUTOMATIC DOORS SERIES 3201-PEGASUS PORTE AUTOMATICHE SERIE 3201-PEGASUS

Code/Codice TC.2.002008.EN  
Version/Versione A  
Date/Data 26.01.2012  
Page/Pagina 3.1.t

TWO PANELS CLASS "EI" FIRE-RESISTANT CENTRAL OPENING LANDING DOOR, TYPE 01/C PL=750÷1800  
PORTA DI PIANO 2 ANTE OPPOSTE RESISTENTE AL FUOCO CLASSE "EI", TIPO 01/C PL=750÷1800

PL	GM	GW	As1	As2	As3
750	1590	1600	245		695
800	1640	1700	270		720
850	1840	1800	295		820
900	1890	1900	320		845
950	1940	2000	345		870
1000	2140	2100	370		970
1050	2190	2200	395	/	995
1100	2240	2300	420		1020
1150	2440	2400	445		1120
1200	2490	2500	470		1145
1250	2540	2600	495		1170
1300	2740	2700	520		1270
1350	2790	2800	545		1295
1440	2840	2900	570		1320
1450	3040	3000	297	595	1420
1500	3090	3100	310	620	1445
1550	3140	3200	323	645	1470
1600	3340	3300	335	670	1570
1650	3390	3400	348	695	1595
1700	3440	3500	360	720	1620
1750	3640	3600	373	745	1720
1800	3690	3700	385	770	1745

LH	ST1	ST2	ST3	ST4
2000	292			
2050	317			
2100	342	/		
2150	367			
2200	392			
2250				
2300				
2350				
2400				
2450			/	
2500				
2550				
2600				
2650				/
2700				
2750				
2800				
2850	307	222		
2900				
2950				
3000				
3050				
3100				
3150				
3200			500	
3250				
3300				
3350				
3400				
3450				500
3500				

FOR THE CERTIFIED DIMENSIONS SEE PAGE 1.4.1  
PER LE DIMENSIONI CERTIFICATE VEDERE PAG. 1.4.1

	DIMENSIONS DIMENSIONI	CLASS CLASSE
PL	800 ÷ 1800	EI120 EI60
LH	2000 ÷ 3500	EI120 EI60
SP	50 ÷ 300 50 ÷ 300 50 ÷ 750 **	EI120 EI60
SB	50 ÷ 95 50 ÷ 300 50 ÷ 750 **	EI120 EI60
SF	50 ÷ 95 50 ÷ 300 50 ÷ 750 **	EI120 EI60

ONLY FOR PL≤1600 AND LH≤2500  
\*\* SOLO PER PL≤1600 E LH≤2500

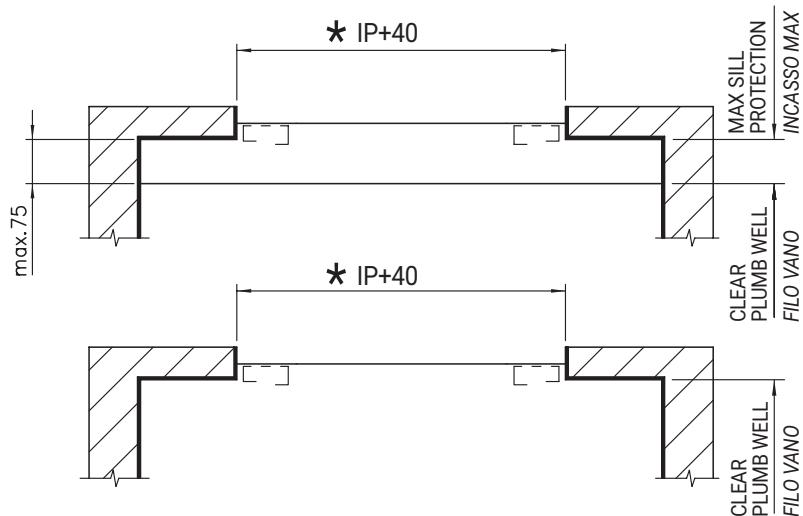
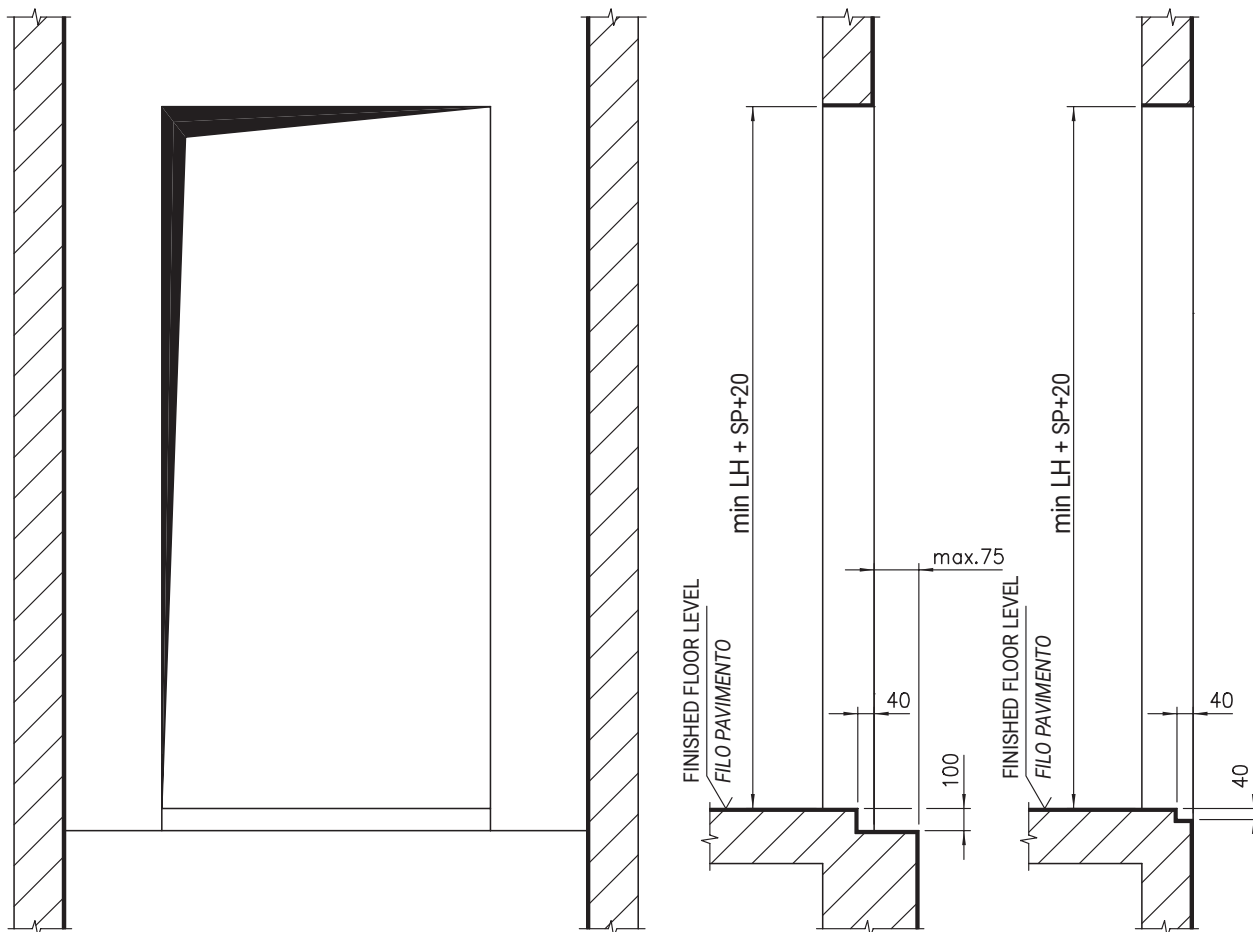


# AUTOMATIC DOORS SERIES 3201-PEGASUS PORTE AUTOMATICHE SERIE 3201-PEGASUS

Code/Codice TC.2.002008.EN  
Version/Versione /  
Date/Data 12.10.2010  
Page/Pagina 3.2

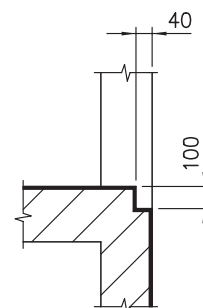
SHAFT WALL FOR TWO PANELS CLASS "EI" FIRE-RESISTANT CENTRAL OPENING DOOR, TYPE 01/C

VANO MURATURA PER PORTA 2 ANTE OPPOSITE REISTENTE AL FUOCO CLASSE "EI", TIPO 01/C



NICHE INSTALLATION WITH  
SUPPORT SILL STANDARD AND  
TYPE "BERLINO"  
MONTAGGIO IN NICCHIA CON  
SOTTOSOGLIA STANDARD E TIPO  
"BERLINO"

WALL INSTALLATION WITH  
SUPPORT SILL TYPE  
"BERLINO"  
MONTAGGIO A SBALZO CON  
SOTTOSOGLIA TIPO "BERLINO"



WALL INSTALLATION WITH  
STANDARD SUPPORT SILL  
MONTAGGIO A SBALZO CON  
SOTTOSOGLIA STANDARD

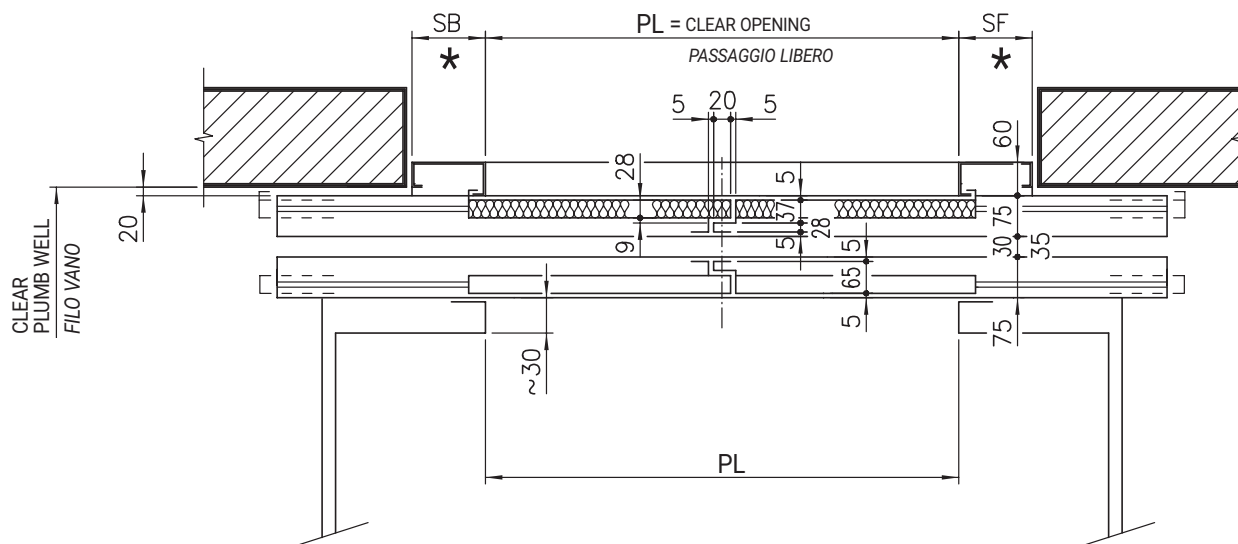
\*  
DIMENSIONS ARE CHANGEABLE  
ON REQUEST WITHIN THE LIMITS  
CONSENTED BY THE TESTINGS  
LE QUOTE CON ASTERISCO SONO  
VARIABILI A RICHIESTA ENTRO I  
LIMITI CONSENTITI DAI COLLAUDI

# AUTOMATIC DOORS SERIES 3201-PEGASUS

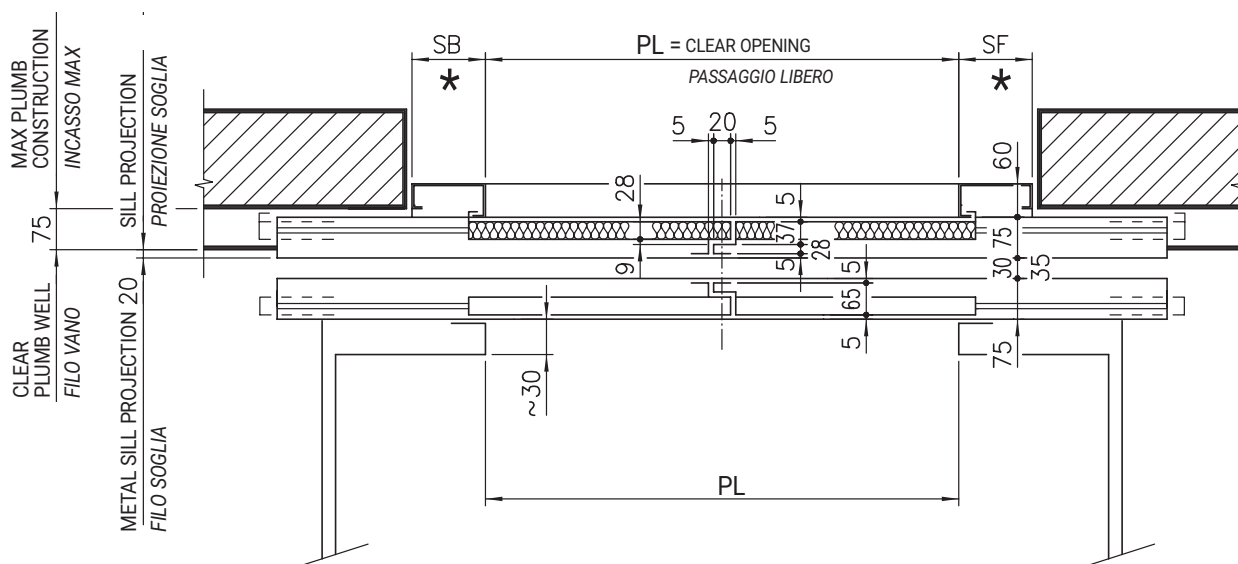
## PORTE AUTOMATICHE SERIE 3201-PEGASUS

Code/Codice TC.2.002008.EN  
Version/Versione /  
Date/Data 12.10.2010  
Page/Pagina 3.3

ARRANGEMENT FOR TWO PANELS CLASS "EI" FIRE-RESISTANT CENTRAL OPENING DOOR, TYPE 01-02/C  
ACCOPIAMENTO PER PORTA 2 ANTE OPPOSTE RESISTENTE AL FUOCO CLASSE "EI", TIPO 01-02/C



WALL INSTALLATION  
MONTAGGIO A SBALZO



NICHE INSTALLATION  
MONTAGGIO IN NICCHIA

DIMENSIONS ARE CHANGEABLE  
ON REQUEST WITHIN THE LIMITS  
CONSENTED BY THE TESTINGS

\*

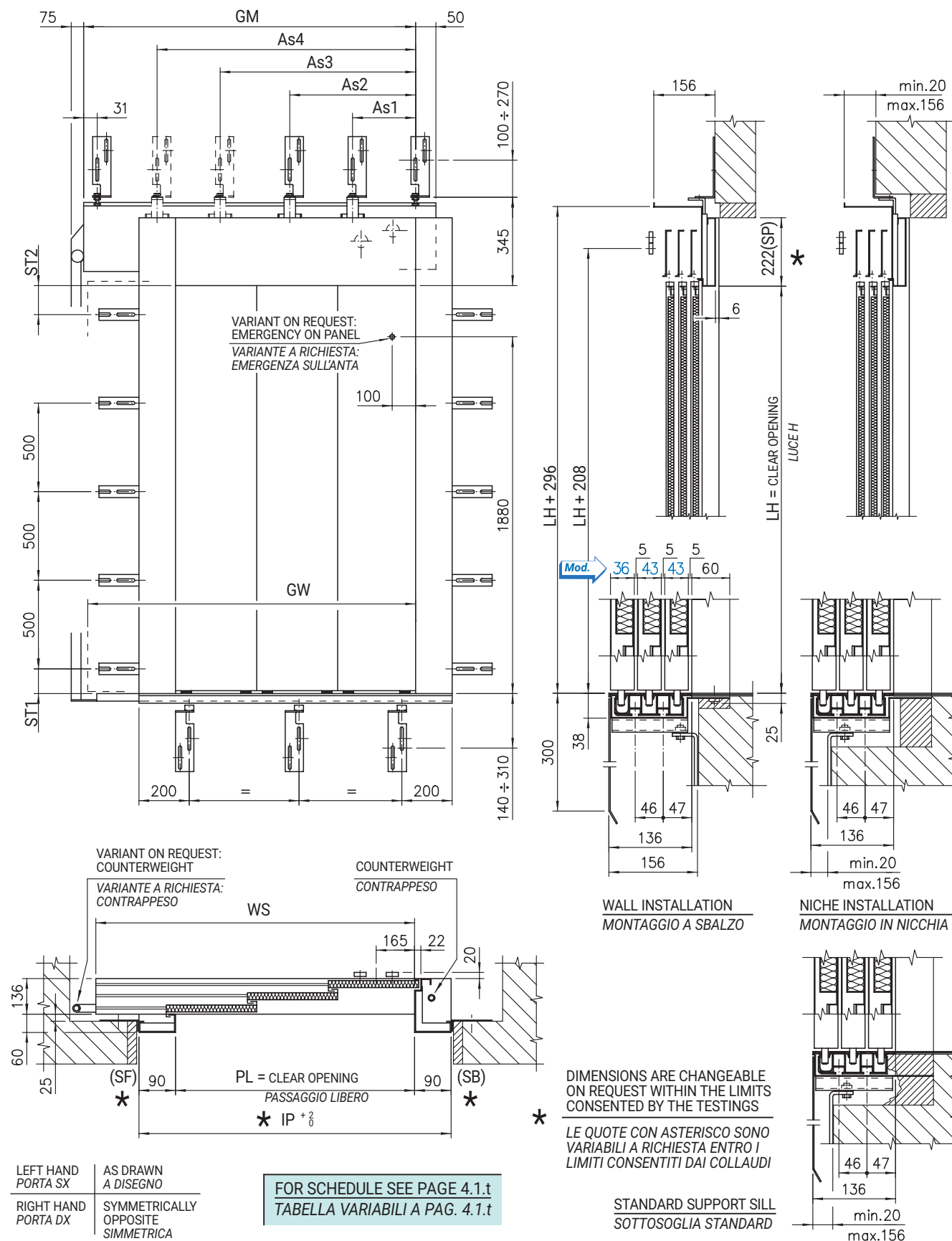
LE QUOTE CON ASTERISCO SONO  
VARIABILI A RICHIESTA ENTRO I  
LIMITI CONSENTITI DAI COLLAUDI

# AUTOMATIC DOORS SERIES 3201-PEGASUS

## PORTE AUTOMATICHE SERIE 3201-PEGASUS

Code/Codice TC.2.002008.EN  
Version/Versione C  
Date/Data 20.06.2022  
Page/Pagina 4.1

THREE PANELS CLASS "EI" FIRE-RESISTANT TEL. LANDING DOOR, TYPE 31/R-L PL=900÷2100, LH≤2700  
PORTA DI PIANO 3 ANTE TEL. RESISTENTE AL FUOCO CLASSE "EI", TIPO 31/R-L PL=900÷2100, LH≤2700



Subject to change without notice!



# AUTOMATIC DOORS SERIES 3201-PEGASUS PORTE AUTOMATICHE SERIE 3201-PEGASUS

Code/Codice TC.2.002008.EN  
Version/Versione A  
Date/Data 26.01.2012  
Page/Pagina 4.1.t

THREE PANELS CLASS "EI" FIRE-RESISTANT TEL. LANDING DOOR, TYPE 31/R-L PL=900÷2100, LH≤2700  
PORTA DI PIANO 3 ANTE TEL. RESISTENTE AL FUOCO CLASSE "EI", TIPO 31/R-L PL=900÷2100, LH≤2700

PL	GM	WS	GW	As1	As2	As3	As4
900	1298	1200	1246	272	770		
950	1348	1250	1312	289	820	/	
1000	1431	1330	1379	305	870		
1050	1481	1400	1446	322	606	920	
1100	1531	1450	1512	339	639	970	
1150	1631	1530	1579	355	673	1020	
1200	1681	1600	1646	342	706	1070	
1250	1731	1650	1712	359	739	1120	
1300	1831	1730	1779	375	773	1170	
1350	1881	1800	1846	392	806	1220	/
1400	1931	1850	1912	409	839	1270	
1450	2031	1930	1979	425	873	1320	
1500	2081	2000	2046	442	906	1370	
1550	2131	2050	2112	459	939	1420	
1600	2231	2130	2179	475	973	1470	
1650	2281	2200	2246	492	1006	1520	
1700	2331	2250	2312		1035	1570	
1750	2431	2330	2379		1060	1620	
1800	2481	2400	2446		890	1280	1670
1850	2531	2450	2512		907	1313	1720
1900	2631	2530	2579	500	923	1347	1770
1950	2681	2600	2646		940	1380	1820
2000	2731	2650	2712		957	1413	1870
2050	2831	2730	2779		973	1447	1920
2100	2881	2800	2846		990	1480	1970

LH	ST1	ST2
2000	292	
2050	317	
2100	342	/
2150	367	
2200	392	
2250		
2300		
2350		
2400		
2450	307	222
2500		
2550		
2600		
2650		
2700		

FOR THE CERTIFIED DIMENSIONS SEE PAGE 1.4  
PER LE DIMENSIONI CERTIFICATE VEDERE PAG. 1.4

	DIMENSIONS DIMENSIONI	CLASS CLASSE
PL	900 ÷ 2100	EI120 EI60
LH	2000 ÷ 2700	EI120 EI60
SP	50 ÷ 300 50 ÷ 300 50 ÷ 750 **	EI120 EI60
SB	50 ÷ 95 50 ÷ 300 50 ÷ 750 **	EI120 EI60
SF	50 ÷ 95 50 ÷ 300 50 ÷ 750 **	EI120 EI60

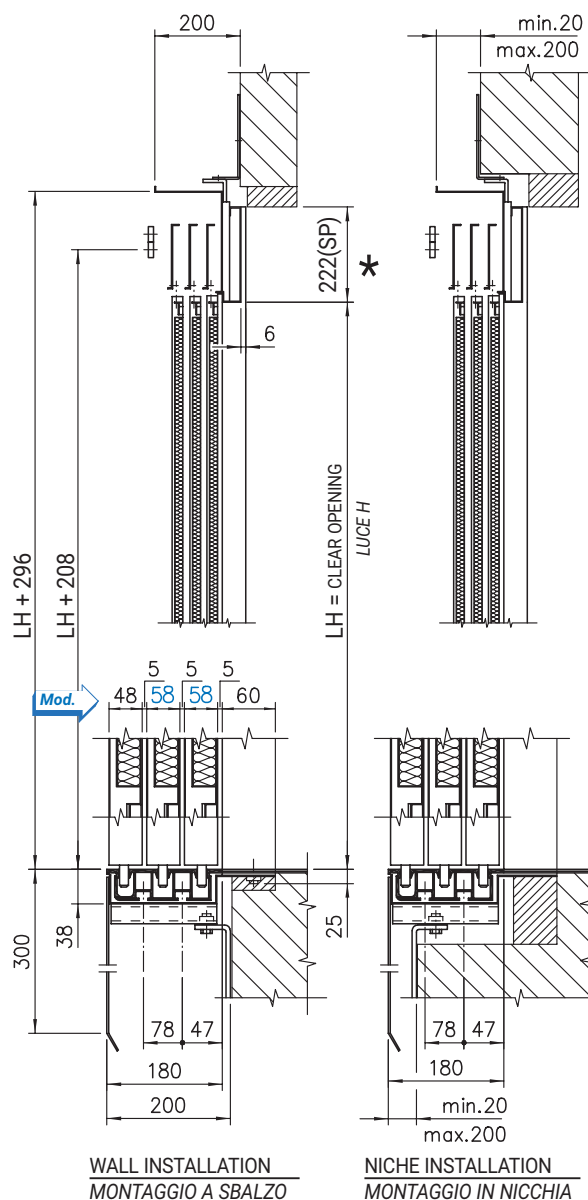
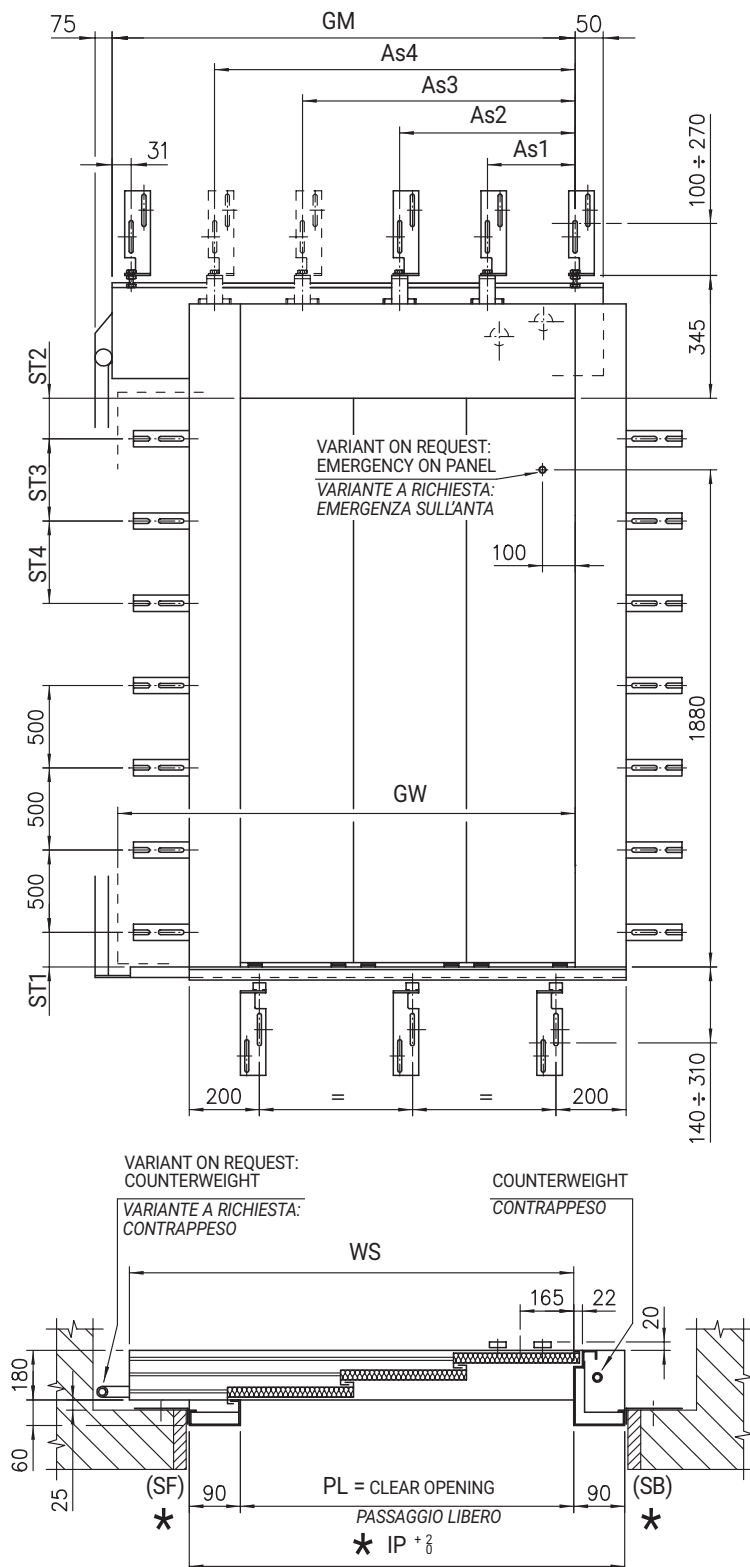
\*\* ONLY FOR PL≤1600 AND LH≤2500  
SOLO PER PL≤1600 E LH≤2500

# AUTOMATIC DOORS SERIES 3201-PEGASUS

## PORTE AUTOMATICHE SERIE 3201-PEGASUS

Code/Codice **TC.2.002008.EN**  
 Version/Versione **C**  
 Date/Data **20.06.2022**  
 Page/Pagina **4.2**

THREE PANELS CLASS "EI" FIRE-RESISTANT TEL. LANDING DOOR, TYPE 31/R-L PL=1050÷2100, LH>2700  
 PORTA DI PIANO 3 ANTE TEL. RESISTENTE AL FUOCO CLASSE "EI", TIPO 31/R-L PL=1050÷2100, LH>2700



DIMENSIONS ARE CHANGEABLE  
ON REQUEST WITHIN THE LIMITS  
CONSENTED BY THE TESTINGS

LE QUOTE CON ASTERISCO SONO  
VARIABILI A RICHIESTA ENTRO I  
LIMITI CONSENTITI DAI COLLAUDI

STANDARD SUPPORT SILL  
SOTTOSOGLIA STANDARD

LEFT HAND  
PORTA SX  
AS DRAWN  
A DISEGNO

RIGHT HAND  
PORTA DX  
SYMMETRICALLY  
OPPOSITE  
SIMMETRICA

FOR SCHEDULE SEE PAGE 4.1.t  
TABELLA VARIABILI A PAG. 4.1.t



# AUTOMATIC DOORS SERIES 3201-PEGASUS PORTE AUTOMATICHE SERIE 3201-PEGASUS

Code/Codice TC.2.002008.EN  
Version/Versione A  
Date/Data 26.01.2012  
Page/Pagina 4.2.t

THREE PANELS CLASS "EI" FIRE-RESISTANT TEL. LANDING DOOR, TYPE 31/R-L PL=1050÷2100, LH>2700  
PORTA DI PIANO 3 ANTE TEL. RESISTENTE AL FUOCO CLASSE "EI", TIPO 31/R-L PL=1050÷2100, LH>2700

PL	GM	WS	GW	As1	As2	As3	As4
1050	1481	1400	1446	322	606	920	
1100	1531	1450	1512	339	639	970	
1150	1631	1530	1579	355	673	1020	
1200	1681	1600	1646	342	706	1070	
1250	1731	1650	1712	359	739	1120	
1300	1831	1730	1779	375	773	1170	
1350	1881	1800	1846	392	806	1220	
1400	1931	1850	1912	409	839	1270	/
1450	2031	1930	1979	425	873	1320	
1500	2081	2000	2046	442	906	1370	
1550	2131	2050	2112	459	939	1420	
1600	2231	2130	2179	475	973	1470	
1650	2281	2200	2246	492	1006	1520	
1700	2331	2250	2312		1035	1570	
1750	2431	2330	2379		1060	1620	
1800	2481	2400	2446		890	1280	1670
1850	2531	2450	2512		907	1313	1720
1900	2631	2530	2579	500	923	1347	1770
1950	2681	2600	2646		940	1380	1820
2000	2731	2650	2712		957	1413	1870
2050	2831	2730	2779		973	1447	1920
2100	2881	2800	2846		990	1480	1970

LH	ST1	ST2	ST3	ST4
2750				
2800			/	
2850				
2900				
2950				
3000				
3050				
3100	307	222		/
3150				
3200			500	
3250				
3300				
3350				
3400				
3450				
3500				500

FOR THE CERTIFIED DIMENSIONS SEE PAGE 1.4  
PER LE DIMENSIONI CERTIFICATE VEDERE PAG. 1.4

	DIMENSIONS DIMENSIONI	CLASS CLASSE
PL	1050 ÷ 2100	EI120 EI60
LH	2750 ÷ 3500	EI120 EI60
SP	50 ÷ 300	EI120 EI60
SB	50 ÷ 95 50 ÷ 300	EI120 EI60
SF	50 ÷ 95 50 ÷ 300	EI120 EI60



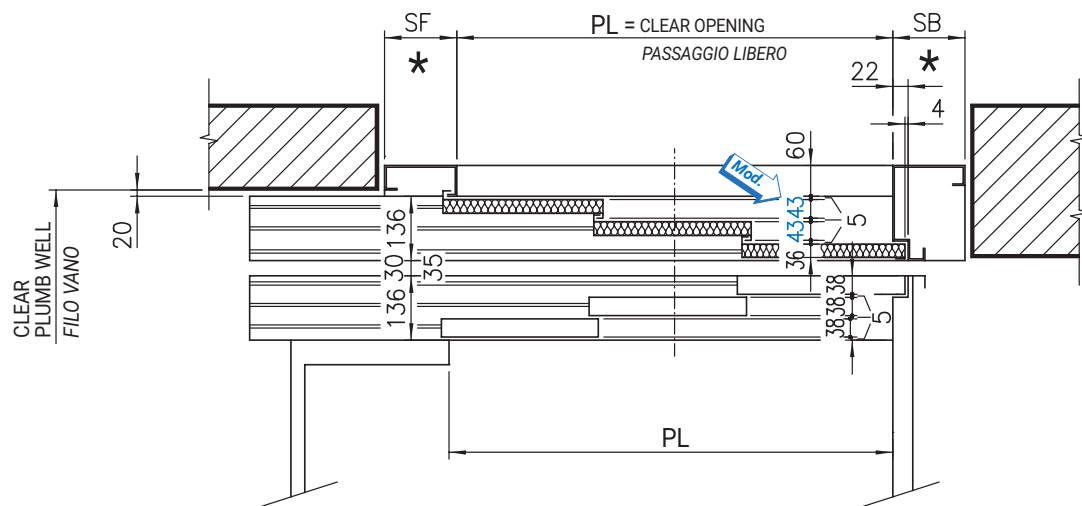


# AUTOMATIC DOORS SERIES 3201-PEGASUS

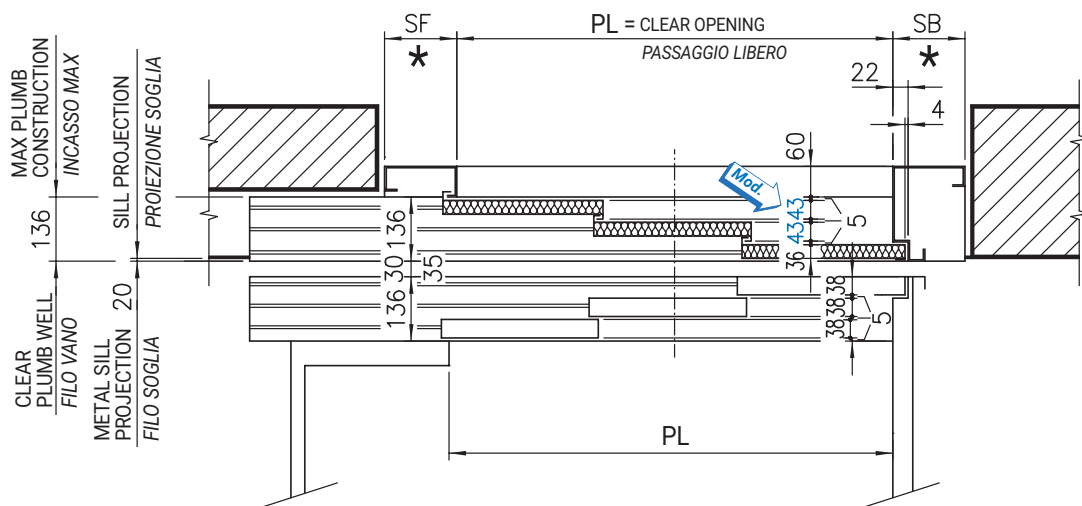
## PORTE AUTOMATICHE SERIE 3201-PEGASUS

Code/Codice TC.2.002008.EN  
Version/Versione C  
Date/Data 20.06.2022  
Page/Pagina 4.4

ARRANGEMENT FOR THREE PANELS CLASS "EI" FIRE-RESISTANT TELESCOPIC DOOR, TYPE 31-32/R-L, LH≤2700  
ACCOPIAMENTO PER PORTA 3 ANTE TELESCOPICA RESISTENTE AL FUOCO CLASSE "EI", TIPO 31/R-L, LH≤2700



WALL INSTALLATION  
MONTAGGIO A SBALZO



NICHE INSTALLATION  
MONTAGGIO IN NICCHIA

LEFT HAND PORTA SX	AS DRAWN A DISEGNO
RIGHT HAND PORTA DX	SYMMETRICALLY OPPOSITE SIMMETRICA

DIMENSIONS ARE CHANGEABLE  
ON REQUEST WITHIN THE LIMITS  
CONSENTED BY THE TESTINGS  
\*  
LE QUOTE CON ASTERISCO SONO  
VARIABILI A RICHIESTA ENTRO I  
LIMITI CONSENTITI DAI COLLAUDI







# AUTOMATIC DOORS SERIES 3201-PEGASUS PORTE AUTOMATICHE SERIE 3201-PEGASUS

Code/Codice TC.2.002008.EN  
Version/Versione A  
Date/Data 26.01.2012  
Page/Pagina 5.1.t

FOUR PANELS CLASS "EI" FIRE-RESISTANT C. OPENING LAND. DOOR, TYPE 41/C PL=1300÷3200, LH≤2700  
PORTA DI PIANO 4 ANTE OPP. RESISTENTE AL FUOCO CLASSE "EI", TIPO 41/C PL=1300÷3200, LH≤2700

PL	GM	GW	As1	As2	As3
1300	2130	2042	520		
1350	2180	2117	545	/	
1400	2280	2192	570		
1450	2330	2267	595		
1500	2380	2342	620		
1550	2430	2417	645		
1600	2480	2492	670		
1650	2530	2567	695	/	
1700	2730	2642	720		
1750	2780	2717	745		
1800	2830	2792	770		
1850	2880	2867	795		
1900	2930	2942	820		
1950	2980	3017	845		
2000	3180	3092	870		
2050	3230	3167	895		
2100	3280	3242	920		
2150	3330	3317	945		
2200	3380	3392	970		
2250	3430	3467	995		
2300	3630	3542	1020		
2350	3680	3617	1045		
2400	3730	3692	1070		
2450	3780	3767	1095		
2500	3830	3842	1120		
2550	3880	3917	1145		
2600	4080	3992	1170		
2650	4130	4067	1195		
2700	4180	4142	1220		
2750	4230	4217	1245		
2800	4280	4292	1270		
2850	4330	4367	1295		
2900	4530	4442	1320		
2950	4580	4517	1345		
3000	4630	4592	1370		
3050	4680	4667	1395		
3100	4730	4742	1420		
3150	4780	4817	1445		
3200	4980	4892	1470		

LH	ST1	ST2
2000	292	
2050	317	
2100	342	/
2150	367	
2200	392	
2250		
2300		
2350		
2400		
2450		
2500	307	222
2550		
2600		
2650		
2700		

	DIMENSIONS DIMENSIONI	CLASS CLASSE
PL	1300 ÷ 3200	EI120 EI60
LH	2000 ÷ 2700	EI120 EI60
SP	50 ÷ 300 50 ÷ 300 50 ÷ 750 **	EI120 EI60
SB	50 ÷ 95 50 ÷ 300 50 ÷ 750 **	EI120 EI60
SF	50 ÷ 95 50 ÷ 300 50 ÷ 750 **	EI120 EI60

\*\* ONLY FOR PL≤1600 AND LH≤2500  
SOLO PER PL≤1600 E LH≤2500

FOR THE CERTIFIED DIMENSIONS SEE PAGE 1.4.1  
PER LE DIMENSIONI CERTIFICATE VEDERE PAG. 1.4.1







# AUTOMATIC DOORS SERIES 3201-PEGASUS

## PORTE AUTOMATICHE SERIE 3201-PEGASUS

Code/Codice TC.2.002008.EN  
Version/Versione A  
Date/Data 26.01.2012  
Page/Pagina 5.2.t

FOUR PANELS CLASS "EI" FIRE-RESISTANT C. OPENING LAND. DOOR, TYPE 41/C PL=1400÷3200, LH>2700

PORTA DI PIANO 4 ANTE OPP. RESISTENTE AL FUOCO CLASSE "EI", TIPO 41/C PL=1400÷3200, LH>2700

PL	GM	GW	As1	As2	As3
1400	2280	2192	570	/	
1450	2330	2267	267	595	
1500	2380	2342	279	620	
1550	2430	2417	292	645	
1600	2480	2492	304	670	
1650	2530	2567	317	695	/
1700	2730	2642	329	720	
1750	2780	2717	342	745	
1800	2830	2792	272	770	
1850	2880	2867	280	795	
1900	2930	2942	289	820	
1950	2980	3017	297	845	
2000	3180	3092	305	870	
2050	3230	3167	314	895	895
2100	3280	3242	292	606	920
2150	3330	3317	300	623	945
2200	3380	3392	309	639	970
2250	3430	3467	317	656	995
2300	3630	3542	325	673	1020
2350	3680	3617	334	689	1045
2400	3730	3692	342	706	1070
2450	3780	3767	350	723	1095
2500	3830	3842	359	739	1120
2550	3880	3917	367	756	1145
2600	4080	3992	375	773	1170
2650	4130	4067	384	789	1195
2700	4180	4142	392	806	1220
2750	4230	4217	400	823	1245
2800	4280	4292	409	839	1270
2850	4330	4367	417	856	1295
2900	4530	4442	425	873	1320
2950	4580	4517	434	889	1345
3000	4630	4592	442	906	1370
3050	4680	4667	450	923	1395
3100	4730	4742	459	939	1420
3150	4780	4817	467	959	1445
3200	4980	4892	475	973	1470

LH	ST1	ST2	ST3	ST4
2750				
2800			/	
2850				
2900				
2950				
3000				
3050				/
3100	307	222		
3150			500	
3200				
3250				
3300				
3350				
3400				
3450				500
3500				

	DIMENSIONS DIMENSIONI	CLASS CLASSE
PL	1400 ÷ 3200	EI120 EI60
LH	2750 ÷ 3500	EI120 EI60
SP	50 ÷ 300	EI120 EI60
SB	50 ÷ 95 50 ÷ 300	EI120 EI60
SF	50 ÷ 95 50 ÷ 300	EI120 EI60

FOR THE CERTIFIED DIMENSIONS SEE PAGE 1.4.1  
PER LE DIMENSIONI CERTIFICATE VEDERE PAG. 1.4.1

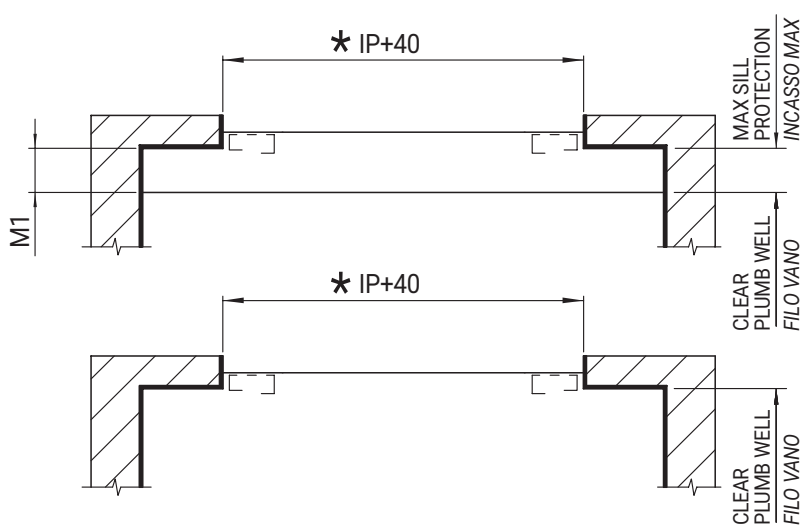
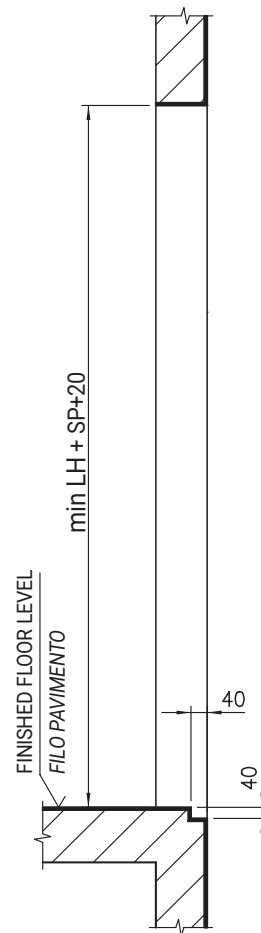
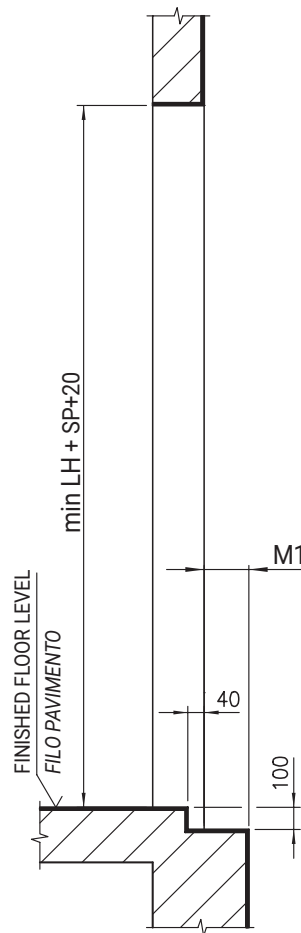
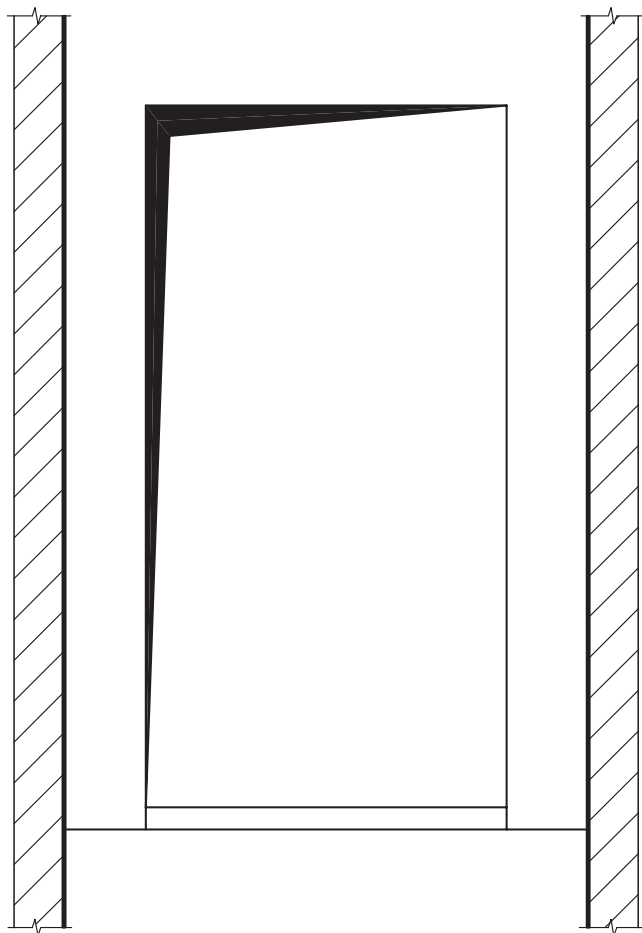
# AUTOMATIC DOORS SERIES 3201-PEGASUS

## PORTE AUTOMATICHE SERIE 3201-PEGASUS

Code/Codice TC.2.002008.EN  
Version/Versione /  
Date/Data 12.10.2010  
Page/Pagina 5.3

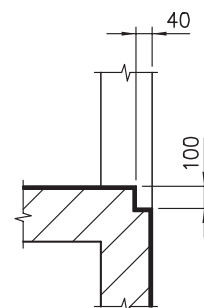
SHAFT WALL FOR FOUR PANELS CLASS "EI" FIRE-RESISTANT CENTRAL OPENING DOOR, TYPE 41/C

VANO MURATURA PER PORTA 4 ANTE OPPOSITE REISTENTE AL FUOCO CLASSE "EI", TIPO 41/C



NICHE INSTALLATION WITH  
SUPPORT SILL STANDARD AND  
TYPE "BERLINO"  
MONTAGGIO IN NICCHIA CON  
SOTTOSOGLIA STANDARD E TIPO  
"BERLINO"

WALL INSTALLATION WITH  
SUPPORT SILL TYPE  
"BERLINO"  
MONTAGGIO A SBALZO CON  
SOTTOSOGLIA TIPO "BERLINO"



WALL INSTALLATION WITH  
STANDARD SUPPORT SILL  
MONTAGGIO A SBALZO CON  
SOTTOSOGLIA STANDARD

DIMENSIONS ARE CHANGEABLE  
ON REQUEST WITHIN THE LIMITS  
CONSENTED BY THE TESTINGS

\*

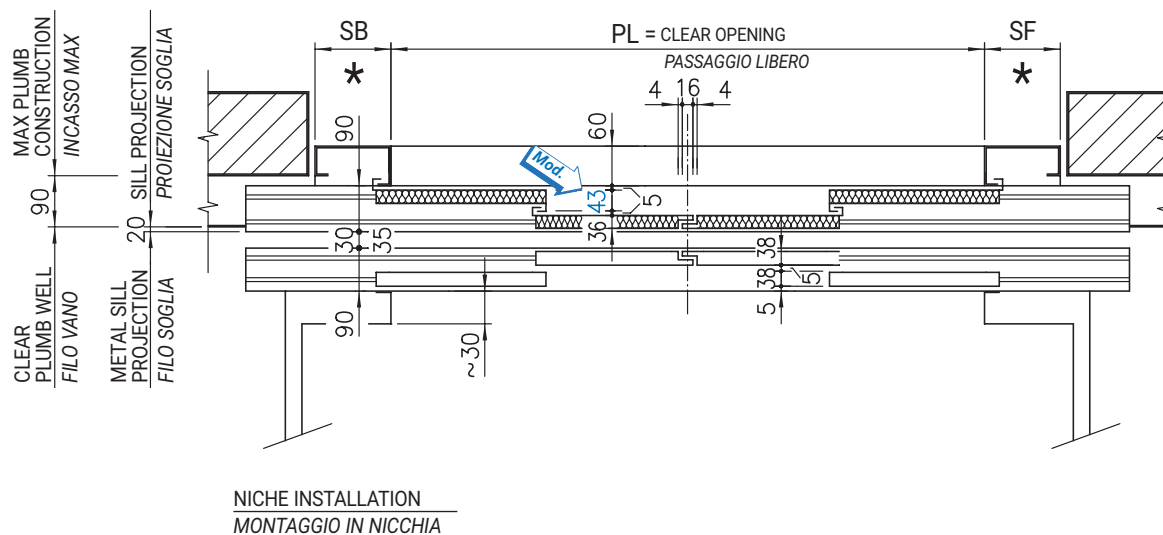
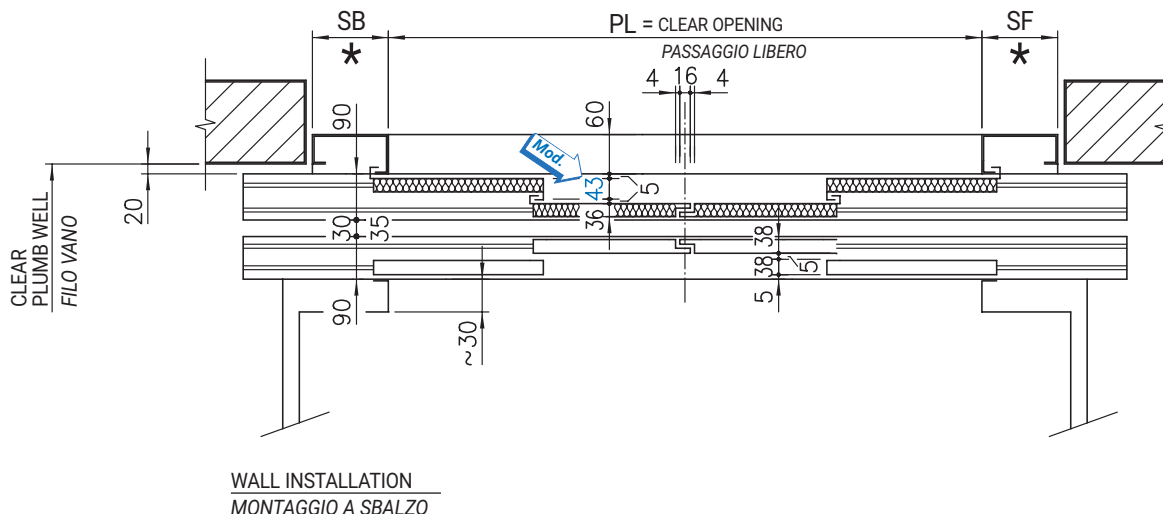
LE QUOTE CON ASTERISCO SONO  
VARIABILI A RICHIESTA ENTRO I  
LIMITI CONSENTITI DAI COLLAUDI

LH	M1
≤ 2700	max. 90
> 2700	max. 120

# AUTOMATIC DOORS SERIES 3201-PEGASUS PORTE AUTOMATICHE SERIE 3201-PEGASUS

Code/Codice TC.2.002008.EN  
Version/Versione C  
Date/Data 20.06.2022  
Page/Pagina 5.4

ARRANGEMENT FOR FOUR PANELS CLASS "EI" FIRE-RESISTANT C. OPENING DOOR, TYPE 41-42/C, LH≤2700  
ACCOPIAMENTO PER PORTA 4 ANTE OPP. RESISTENTE AL FUOCO CLASSE "EI", TIPO 41-42/C, LH≤2700



DIMENSIONS ARE CHANGEABLE  
ON REQUEST WITHIN THE LIMITS  
CONSENTED BY THE TESTINGS

\*

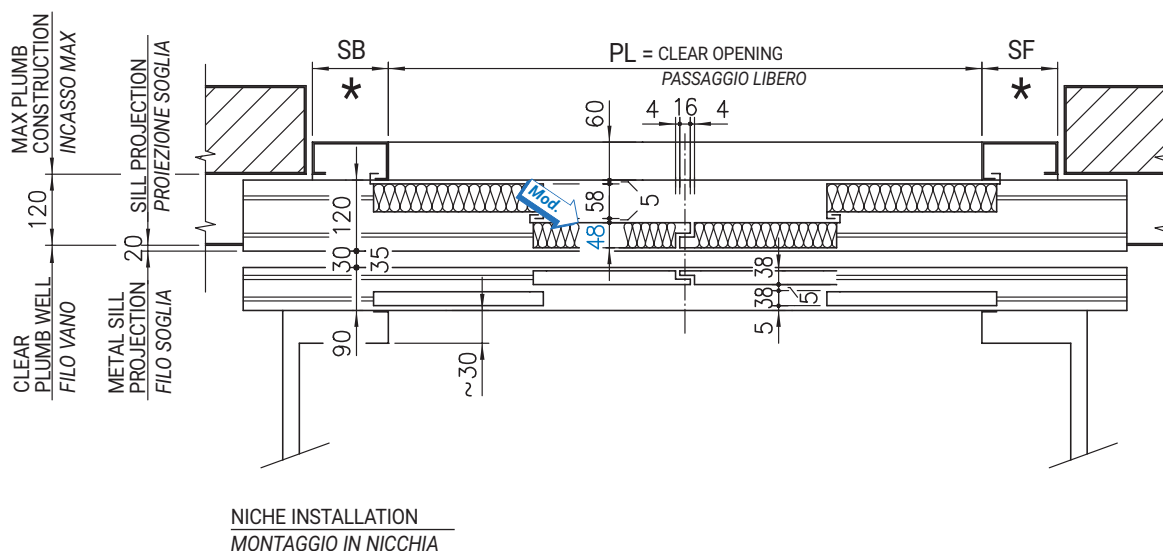
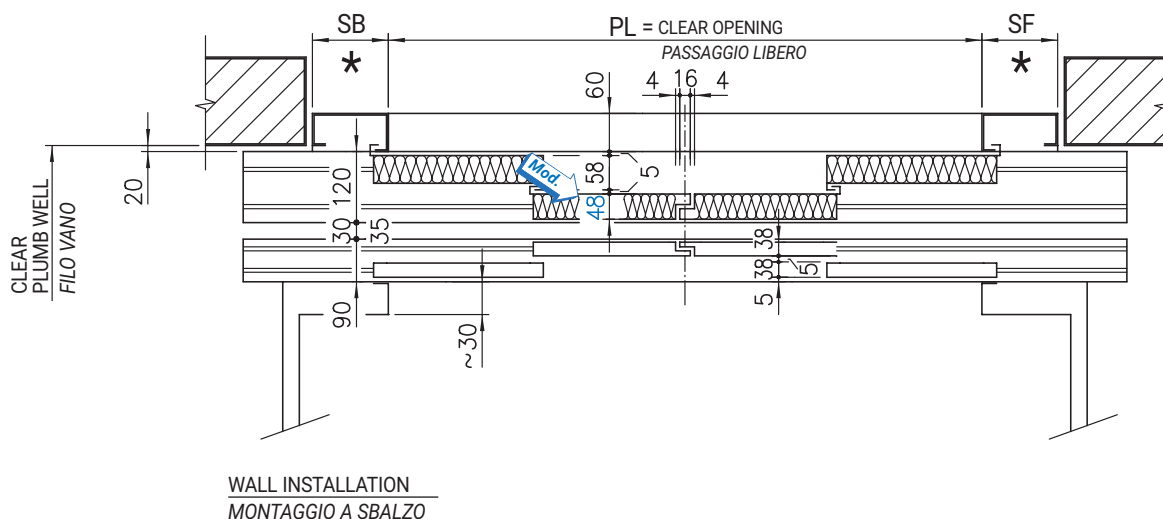
LE QUOTE CON ASTERISCO SONO  
VARIABILI A RICHIESTA ENTRO I  
LIMITI CONSENTITI DAI COLLAUDI

# AUTOMATIC DOORS SERIES 3201-PEGASUS

## PORTE AUTOMATICHE SERIE 3201-PEGASUS

Code/Codice **TTC.2.002008.EN**  
 Version/Versione **C**  
 Date/Data **20.06.2022**  
 Page/Pagina **5.5**

ARRANGEMENT FOR FOUR PANELS CLASS "EI" FIRE-RESISTANT C. OPENING DOOR, TYPE 41-42/C, LH>2700  
 ACCOPPIAMENTO PER PORTA 4 ANTE OPP. RESISTENTE AL FUOCO CLASSE "EI", TIPO 41-42/C, LH>2700



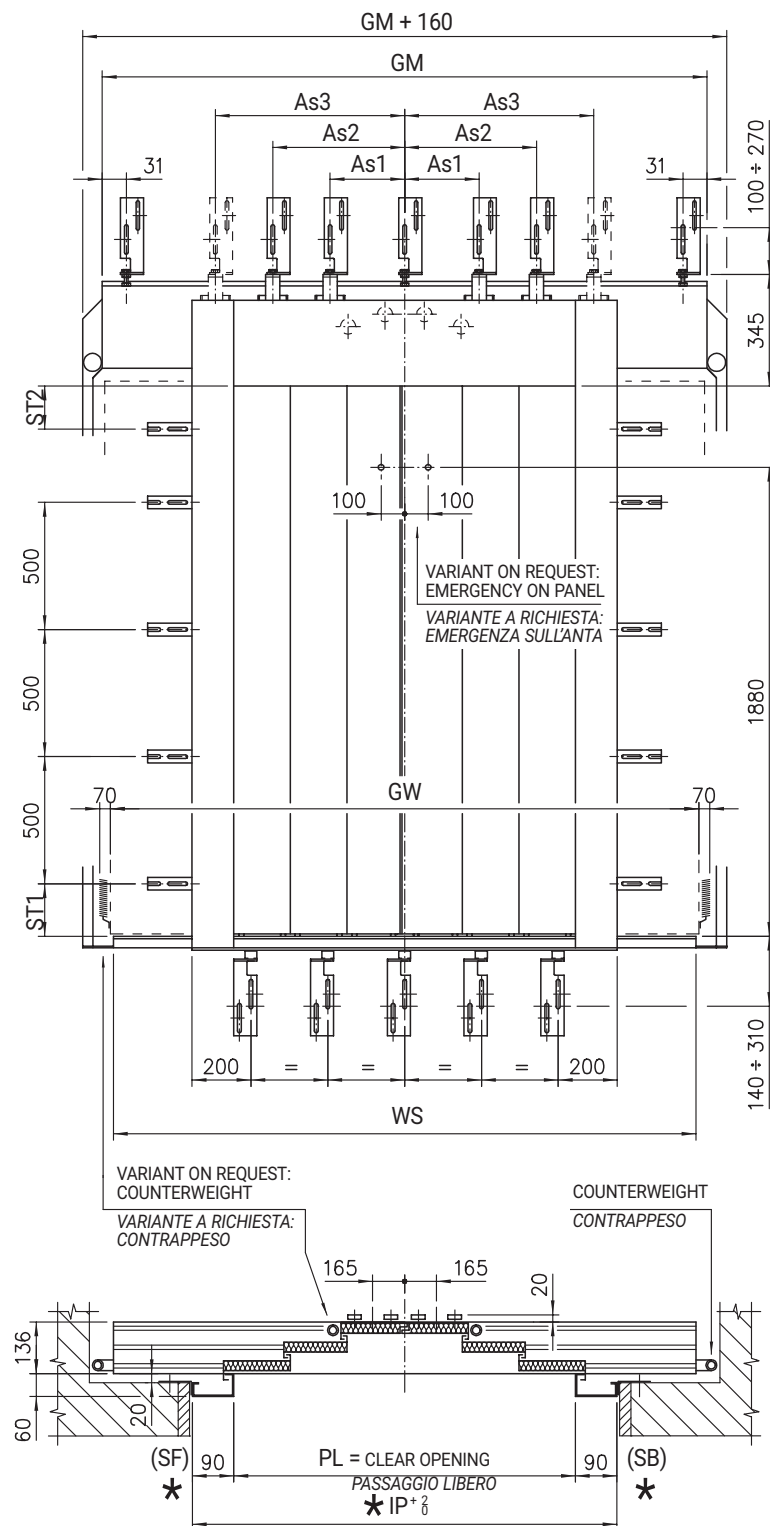
DIMENSIONS ARE CHANGEABLE  
ON REQUEST WITHIN THE LIMITS  
CONSENTED BY THE TESTINGS

\* LE QUOTE CON ASTERISCO SONO  
VARIABILI A RICHIESTA ENTRO I  
LIMITI CONSENTITI DAI COLLAUDI

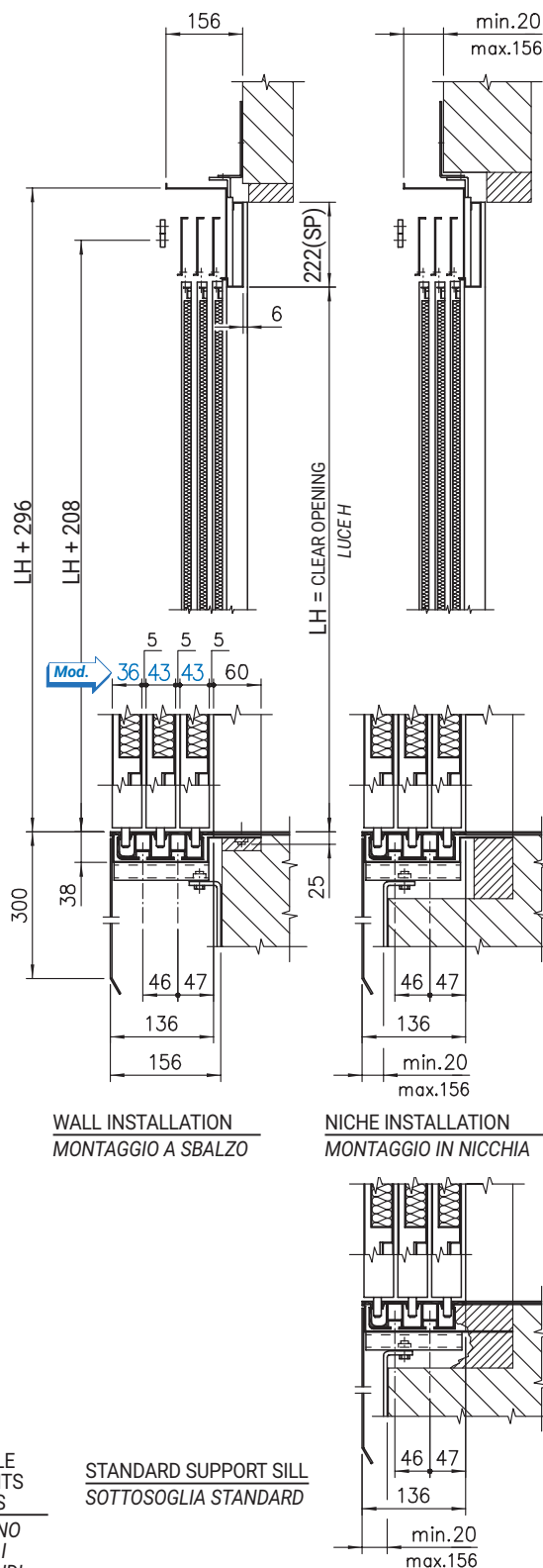
# AUTOMATIC DOORS SERIES 3201-PEGASUS PORTE AUTOMATICHE SERIE 3201-PEGASUS

Code/Codice TC.2.002008.EN  
Version/Versione C  
Date/Data 20.06.2022  
Page/Pagina 6.1

SIX PANELS CLASS "EI" FIRE-RESISTANT C. OPENING LANDING DOOR, TYPE 61/C PL=1800÷3200, LH≤2700  
PORTA DI PIANO 6 ANTE OPPOSTE RESISTENTE AL FUOCO CLASSE "EI", TIPO 61/C PL=1800÷3200, LH≤2700



FOR SCHEDULE SEE PAGE 6.1.t  
TABELLA VARIABILI A PAG. 6.1.t



DIMENSIONS ARE CHANGEABLE  
ON REQUEST WITHIN THE LIMITS  
CONSENTED BY THE TESTINGS  
\* LE QUOTE CON ASTERISCO SONO  
VARIABILI A RICHIESTA ENTRO I  
LIMITI CONSENTITI DAI COLLAUDI



# AUTOMATIC DOORS SERIES 3201-PEGASUS PORTE AUTOMATICHE SERIE 3201-PEGASUS

Code/Codice TC.2.002008.EN  
Version/Versione A  
Date/Data 26.01.2012  
Page/Pagina 6.1.t

SIX PANELS CLASS "EI" FIRE-RESISTANT C. OPENING LANDING DOOR, TYPE 61/C PL=1800÷3200, LH≤2700  
PORTA DI PIANO 6 ANTE OPPOSITE RESISTENTE AL FUOCO CLASSE "EI", TIPO 61/C PL=1800÷3200, LH≤2700

PL	GM	GW	WS	As1	As2	As3
1800	2580	2492	2400	272	770	
1850	2630	2558	2450	280	795	
1900	2680	2625	2530	289	820	/
1950	2730	2692	2600	297	845	
2000	2846	2758	2650	305	870	
2050	2896	2825	2730	314	589	895
2100	2946	2892	2800	292	606	920
2150	2996	2958	2850	300	623	945
2200	3046	3025	2930	309	639	970
2250	3096	3092	3000	317	656	995
2300	3246	3158	3050	325	673	1020
2350	3296	3225	3130	334	689	1045
2400	3346	3292	3200	342	706	1070
2450	3396	3358	3250	350	723	1095
2500	3446	3425	3330	359	739	1120
2550	3496	3492	3400	367	756	1145
2600	3646	3558	3450	375	773	1170
2650	3696	3625	3530	384	789	1195
2700	3746	3692	3600	392	806	1220
2750	3796	3758	3650	400	823	1245
2800	3846	3825	3730	409	839	1270
2850	3896	3892	3800	417	856	1295
2900	4046	3958	3850	425	873	1320
2950	4096	4025	3930	434	889	1345
3000	4146	4092	4000	442	906	1370
3050	4196	4158	4050	450	923	1395
3100	4246	4225	4130	459	939	1420
3150	4296	4292	4200	467	959	1445
3200	4446	4358	4250	475	973	1470

LH	ST1	ST2
2000	292	
2050	317	
2100	342	/
2150	367	
2200	392	
2250		
2300		
2350		
2400		
2450	307	222
2500		
2550		
2600		
2650		
2700		

FOR THE CERTIFIED DIMENSIONS SEE PAGE 1.4.1  
PER LE DIMENSIONI CERTIFICATE VEDERE PAG. 1.4.1

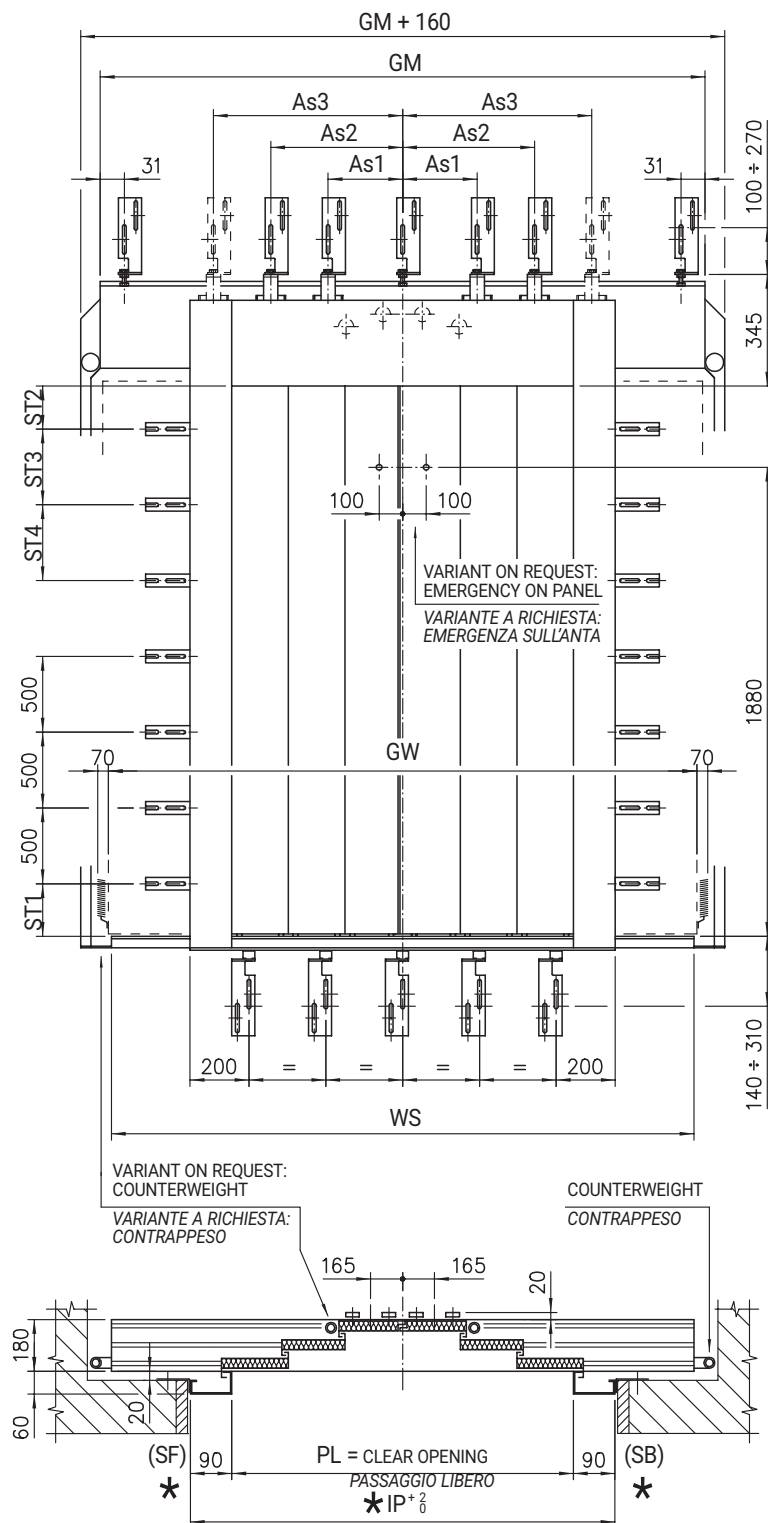
	DIMENSIONS DIMENSIONI	CLASS CLASSE
PL	1800 ÷ 3200	EI120 EI60
LH	2000 ÷ 2700	EI120 EI60
SP	50 ÷ 300	EI120 EI60
SB	50 ÷ 95 50 ÷ 300	EI120 EI60
SF	50 ÷ 95 50 ÷ 300	EI120 EI60

# AUTOMATIC DOORS SERIES 3201-PEGASUS

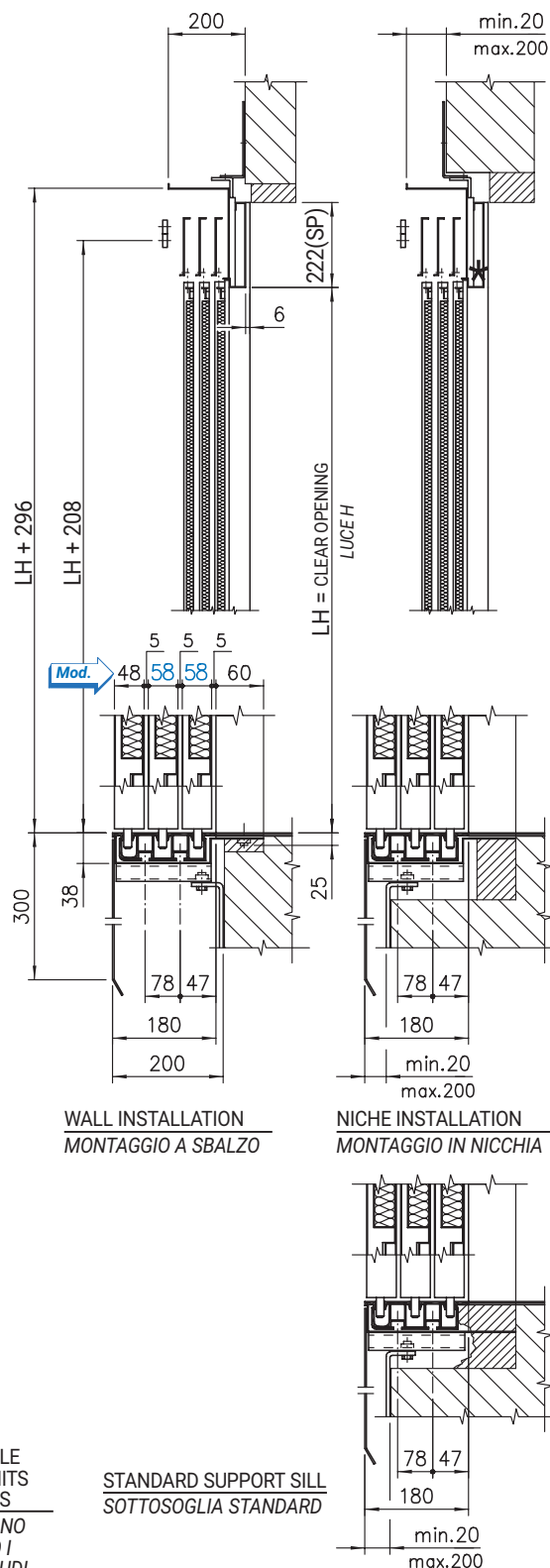
## PORTE AUTOMATICHE SERIE 3201-PEGASUS

Code/Codice **TC.2.002008.EN**  
 Version/Versione **C**  
 Date/Data **20.06.2022**  
 Page/Pagina **6.2**

SIX PANELS CLASS "EI" FIRE-RESISTANT C. OPENING LANDING DOOR, TYPE 61/C PL=1800÷3200, LH>2700  
 PORTA DI PIANO 6 ANTE OPPOSTE RESISTENTE AL FUOCO CLASSE "EI", TIPO 61/C PL=1800÷3200, LH>2700



FOR SCHEDULE SEE PAGE 6.1.1.t  
 TABELLA VARIABILI A PAG. 6.1.1.t



DIMENSIONS ARE CHANGEABLE ON REQUEST WITHIN THE LIMITS CONSENTED BY THE TESTINGS  
 LE QUOTE CON ASTERISCO SONO VARIABILI A RICHIESTA ENTRO I LIMITI CONSENTITI DAI COLLAUDI



# AUTOMATIC DOORS SERIES 3201-PEGASUS PORTE AUTOMATICHE SERIE 3201-PEGASUS

Code/Codice TC.2.002008.EN  
Version/Versione A  
Date/Data 26.01.2012  
Page/Pagina 6.2.t

SIX PANELS CLASS "EI" FIRE-RESISTANT C. OPENING LANDING DOOR, TYPE 61/C PL=1800÷3200, LH>2700  
PORTA DI PIANO 6 ANTE OPPOSTE RESISTENTE AL FUOCO CLASSE "EI", TIPO 61/C PL=1800÷3200, LH>2700

PL	GM	GW	WS	As1	As2	As3
2100	2946	2892	2800	292	606	920
2150	2996	2958	2850	300	623	945
2200	3046	3025	2930	309	639	970
2250	3096	3092	3000	317	656	995
2300	3246	3158	3050	325	673	1020
2350	3296	3225	3130	334	689	1045
2400	3346	3292	3200	342	706	1070
2450	3396	3358	3250	350	723	1095
2500	3446	3425	3330	359	739	1120
2550	3496	3492	3400	367	756	1145
2600	3646	3558	3450	375	773	1170
2650	3696	3625	3530	384	789	1195
2700	3746	3692	3600	392	806	1220
2750	3796	3758	3650	400	823	1245
2800	3846	3825	3730	409	839	1270
2850	3896	3892	3800	417	856	1295
2900	4046	3958	3850	425	873	1320
2950	4096	4025	3930	434	889	1345
3000	4146	4092	4000	442	906	1370
3050	4196	4158	4050	450	923	1395
3100	4246	4225	4130	459	939	1420
3150	4296	4292	4200	467	959	1445
3200	4446	4358	4250	475	973	1470

LH	ST1	ST2	ST3	ST4
2750				
2800				
2850			/	
2900				
2950				
3000				
3050				/
3100	307	222		
3150				
3200			500	
3250				
3300				
3350				
3400				
3450				500
3500				

FOR THE CERTIFIED DIMENSIONS SEE PAGE 1.4.1  
PER LE DIMENSIONI CERTIFICATE VEDERE PAG. 1.4.1

	DIMENSIONS DIMENSIONI	CLASS CLASSE
PL	2100 ÷ 3200	EI120 EI60
LH	2750 ÷ 3500	EI120 EI60
SP	50 ÷ 300	EI120 EI60
SB	50 ÷ 95 50 ÷ 300	EI120 EI60
SF	50 ÷ 95 50 ÷ 300	EI120 EI60



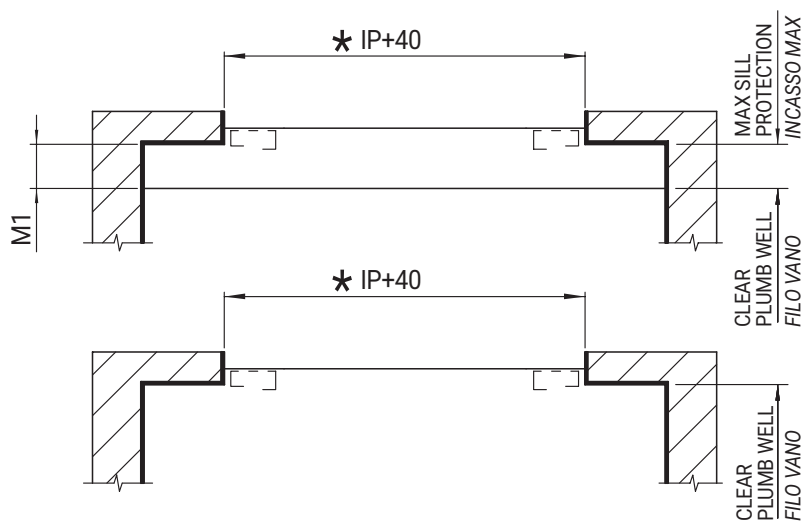
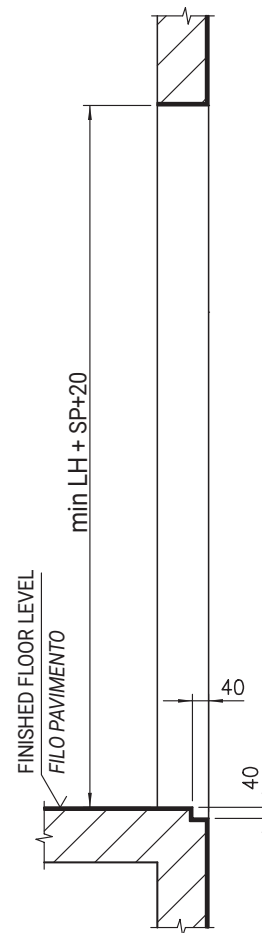
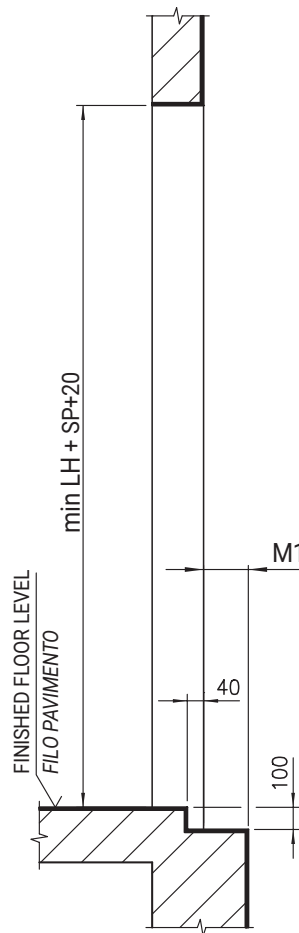
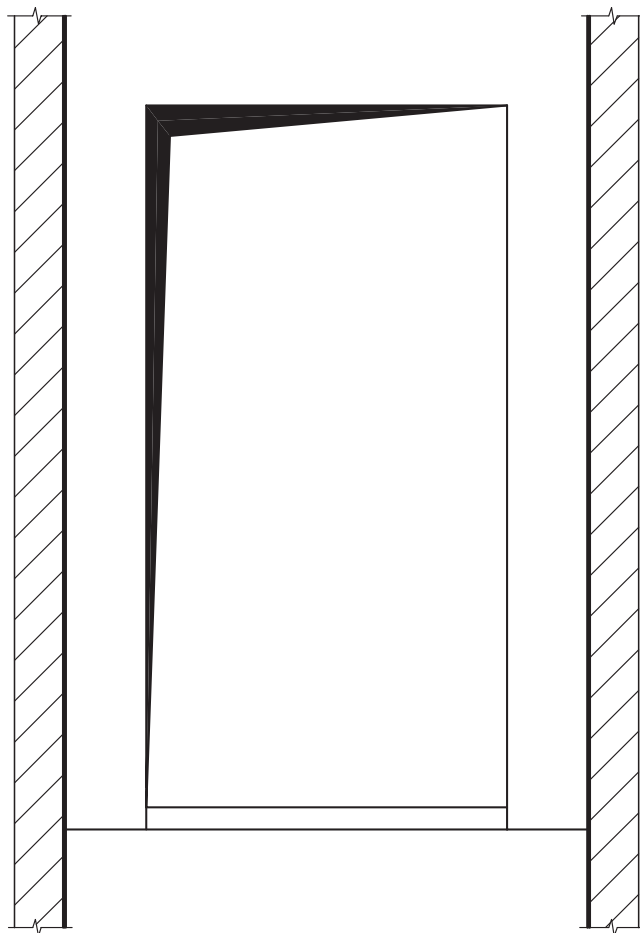
# AUTOMATIC DOORS SERIES 3201-PEGASUS

## PORTE AUTOMATICHE SERIE 3201-PEGASUS

Code/Codice TC.2.002008.EN  
Version/Versione /  
Date/Data 12.10.2010  
Page/Pagina 6.3

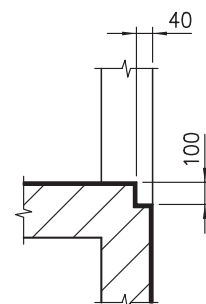
SHAFT WALL FOR SIX PANELS CLASS "EI" FIRE-RESISTANT CENTRAL OPENING DOOR, TYPE 61/C

VANO MURATURA PER PORTA 6 ANTE OPPOSITE RESISTENTI AL FUOCO CLASSE "EI", TIPO 61/C



NICHE INSTALLATION WITH  
SUPPORT SILL STANDARD AND  
TYPE "BERLINO"  
MONTAGGIO IN NICCHIA CON  
SOTTOSOGGLIA STANDARD E TIPO  
"BERLINO"

WALL INSTALLATION WITH  
SUPPORT SILL TYPE  
"BERLINO"  
MONTAGGIO A SBALZO CON  
SOTTOSOGGLIA TIPO "BERLINO"



WALL INSTALLATION WITH  
STANDARD SUPPORT SILL  
MONTAGGIO A SBALZO CON  
SOTTOSOGGLIA STANDARD

DIMENSIONS ARE CHANGEABLE  
ON REQUEST WITHIN THE LIMITS  
CONSENTED BY THE TESTINGS  
\* LE QUOTE CON ASTERISCO SONO  
VARIABILI A RICHIESTA ENTRO I  
LIMITI CONSENTITI DAI COLLAUDI

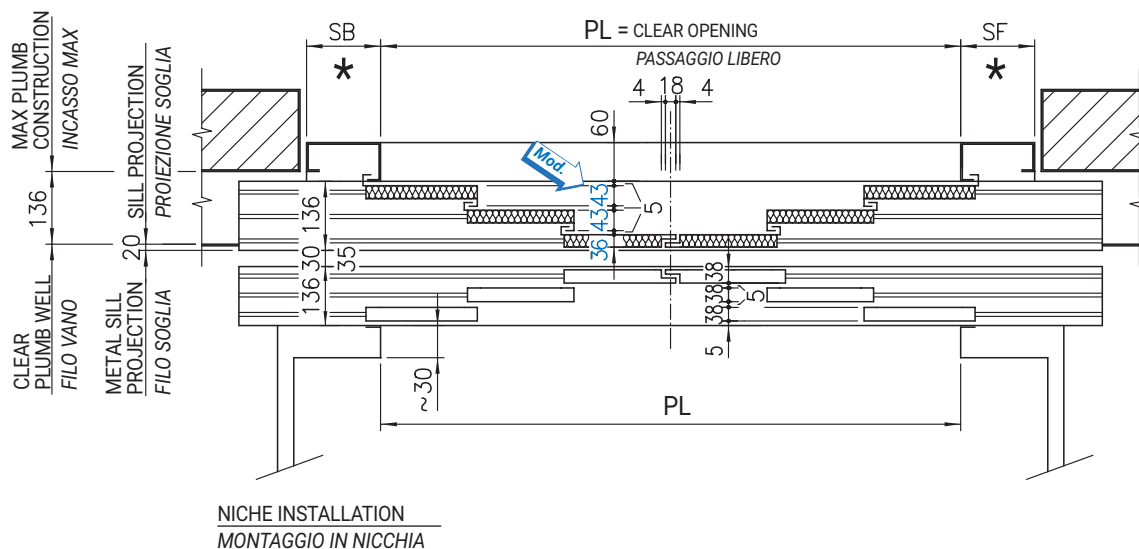
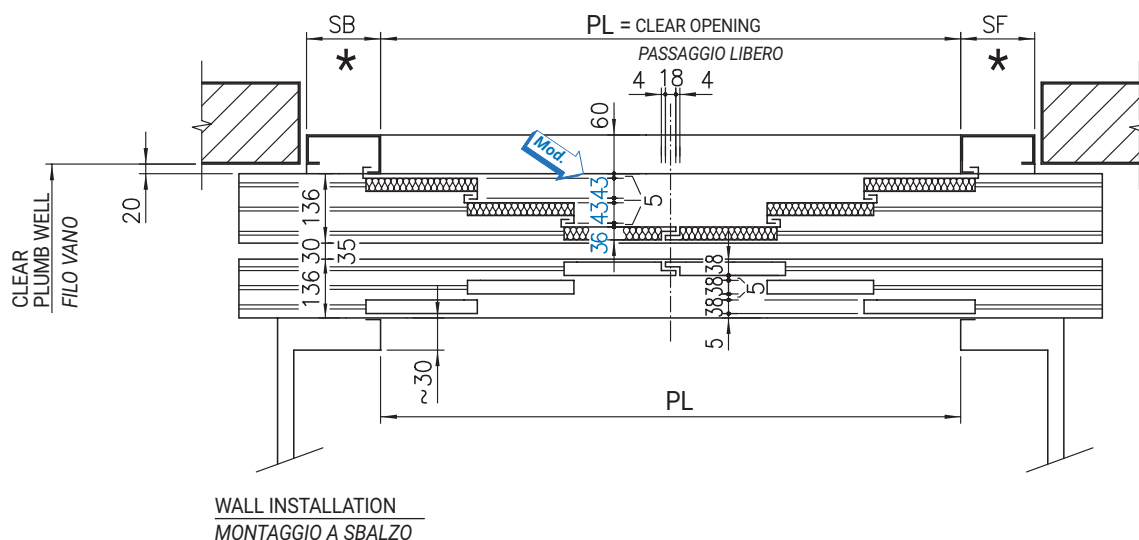
LH	M1
≤ 2700	max. 136
> 2700	max. 180

# AUTOMATIC DOORS SERIES 3201-PEGASUS

## PORTE AUTOMATICHE SERIE 3201-PEGASUS

Code/Codice TC.2.002008.EN  
Version/Versione C  
Date/Data 20.06.2022  
Page/Pagina 6.4

ARRANGEMENT FOR SIX PANELS CLASS "EI" FIRE-RESISTANT CEN. OPENING DOOR, TYPE 61-62/C, LH≤2700  
ACCOPIAMENTO PER PORTA 6 ANTE OPP. RESISTENTE AL FUOCO CLASSE "EI", TIPO 61-62/C, LH≤2700



DIMENSIONS ARE CHANGEABLE  
ON REQUEST WITHIN THE LIMITS  
CONSENTED BY THE TESTINGS

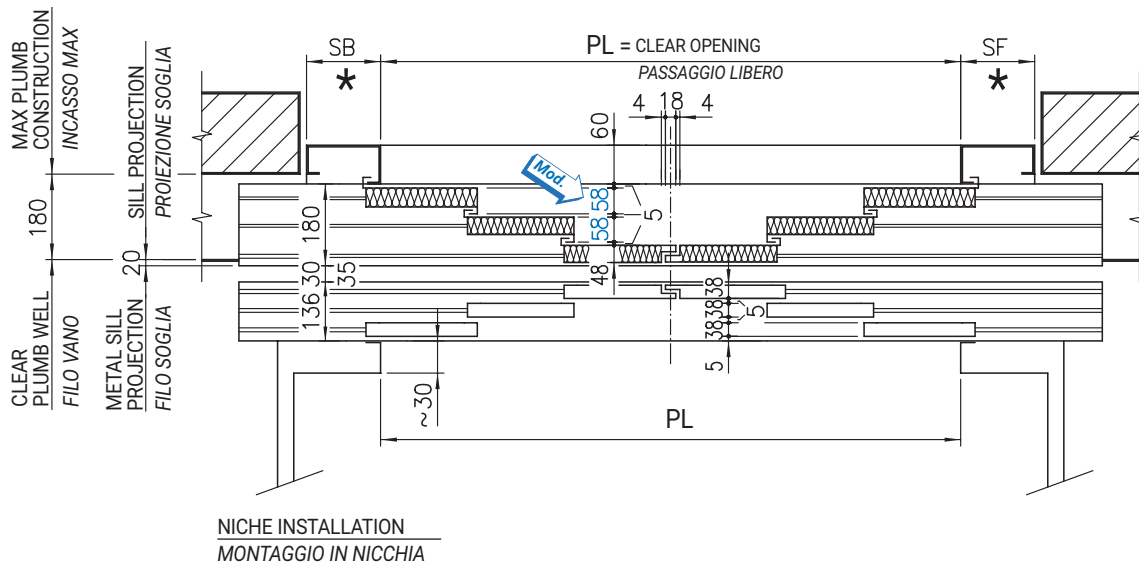
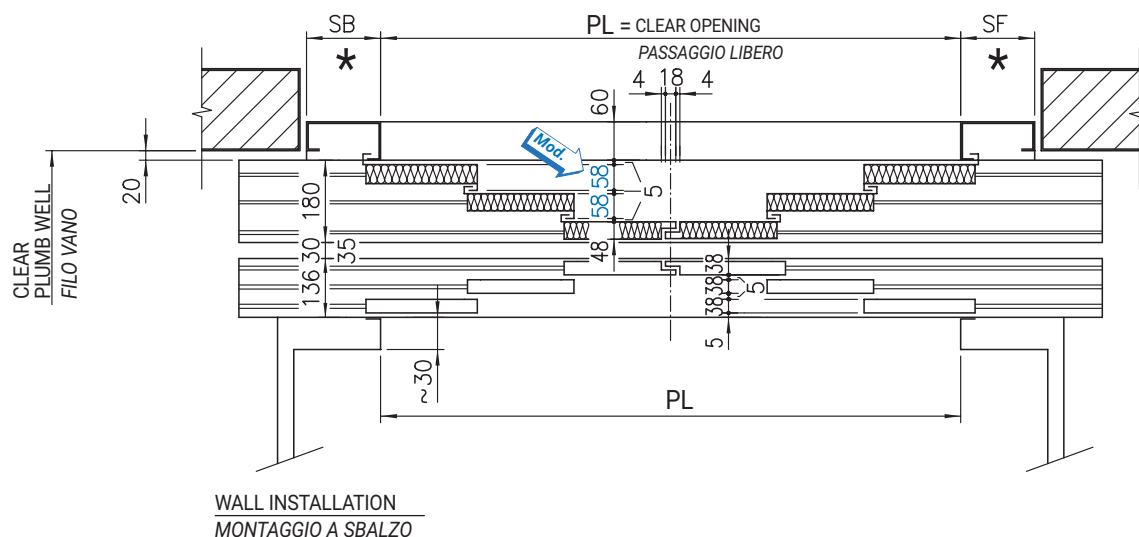
\* LE QUOTE CON ASTERISCO SONO  
VARIABILI A RICHIESTA ENTRO I  
LIMITI CONSENTITI DAI COLLAUDI

# AUTOMATIC DOORS SERIES 3201-PEGASUS

## PORTE AUTOMATICHE SERIE 3201-PEGASUS

Code/Codice TC.2.002008.EN  
Version/Versione C  
Date/Data 20.06.2022  
Page/Pagina 6.5

ARRANGEMENT FOR SIX PANELS CLASS "EI" FIRE-RESISTANT CEN. OPENING DOOR, TYPE 61-62/C, LH>2700  
ACCOPIAMENTO PER PORTA 6 ANTE OPP. RESISTENTE AL FUOCO CLASSE "EI", TIPO 61-62/C, LH>2700



DIMENSIONS ARE CHANGEABLE  
ON REQUEST WITHIN THE LIMITS  
CONSENTED BY THE TESTINGS

\* LE QUOTE CON ASTERISCO SONO  
VARIABILI A RICHIESTA ENTRO I  
LIMITI CONSENTITI DAI COLLAUDI





# AUTOMATIC DOORS SERIES 3201-PEGASUS PORTE AUTOMATICHE SERIE 3201-PEGASUS

Code/Codice TC.2.002008.EN  
Version/Versione B  
Date/Data 26.07.2021  
Page/Pagina 7.1.t

ONE PANEL CLASS "EI" FIRE-RESISTANT LANDING DOOR, TYPE 71/R-L PL=600÷1400  
PORTA DI PIANO 1 ANTA RESISTENTE AL FUOCO CLASSE "EI", TIPO 71/R-L PL=600÷1400

PL	GM	GW	As1	As2	As3	As4	As5
600	1253	1265	530				
650	1361	1365	580	/			
700	1428	1465	570				
750	1553	1565	620				
800	1661	1665	370	670		/	
850	1728	1765	395	720			
900	1853	1865	420	770			
950	1978	1965	445	820	/		/
1000	2078	2065	470	870			
1050	2128	2165	495	920		1429	
1100	2278	2265	520	970		1479	
1150	2328	2365	545	1020		1579	
1200	2478	2465	570	1070		1629	
1250	2528	2565	595	1120		1729	
1300	2678	2665	620	1170		1779	
1350	2728	2765	645	1220		1929	
1400	2878	2865	470	870	1270	1776	2282

LH	ST1	ST2	ST3	ST4
2000	292			
2050	317			
2100	342	/		
2150	367			
2200	392			
2250				
2300				
2350				
2400				
2450			/	
2500				
2550				
2600				
2650				
2700				/
2750				
2800				
2850	307	222		
2900				
2950				
3000				
3050				
3100				
3150				
3200			500	
3250				
3300				
3350				
3400				
3450				500
3500				

FOR THE CERTIFIED DIMENSIONS SEE PAGE 1.4  
PER LE DIMENSIONI CERTIFICATE VEDERE PAG. 1.4

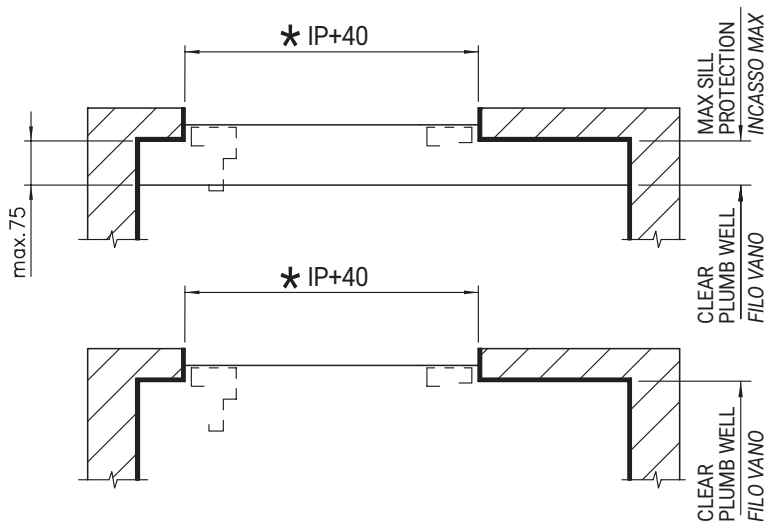
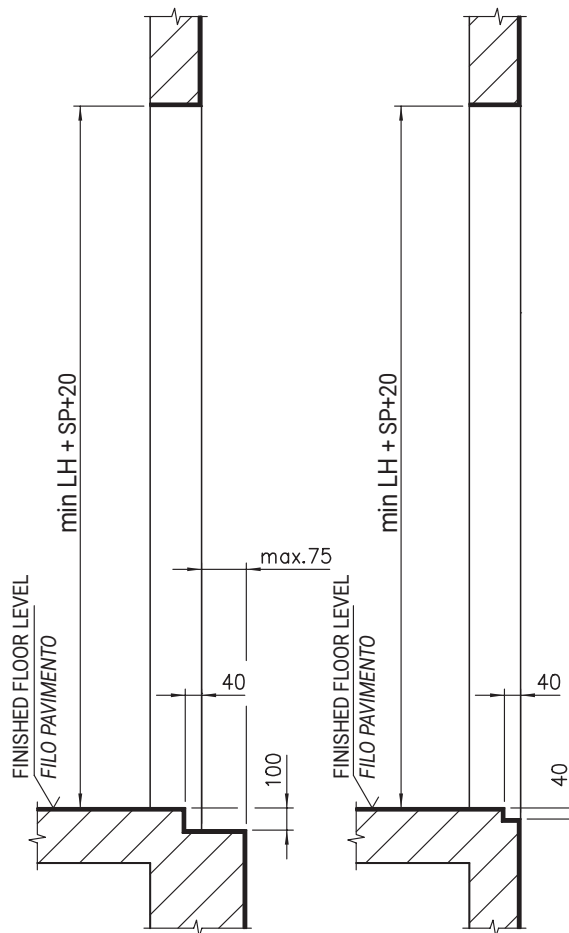
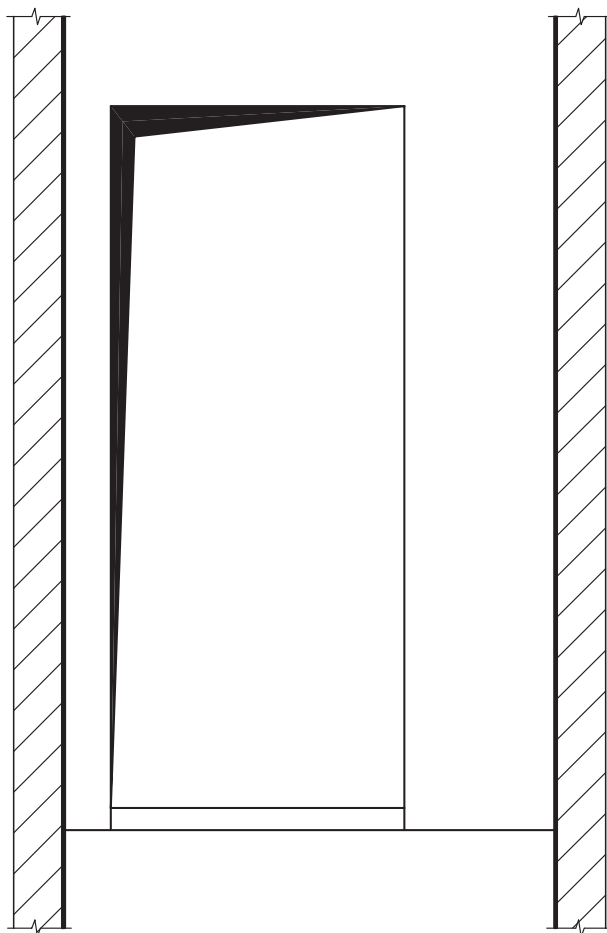
	DIMENSIONS DIMENSIONI	CLASS CLASSE
PL	600 ÷ 1400	EI120 EI60
LH	2000 ÷ 3500	EI120 EI60
SP	50 ÷ 300 50 ÷ 300 50 ÷ 750 **	EI120 EI60
SB	50 ÷ 95 50 ÷ 300 50 ÷ 750 **	EI120 EI60
SF	50 ÷ 95 50 ÷ 300 50 ÷ 750 **	EI120 EI60

\*\* ONLY FOR LH≤2500  
SOLO PER LH≤2500

# AUTOMATIC DOORS SERIES 3201-PEGASUS PORTE AUTOMATICHE SERIE 3201-PEGASUS

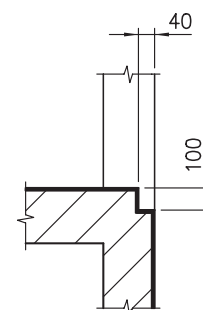
Code/Codice TC.2.002008.EN  
Version/Versione /  
Date/Data 12.10.2010  
Page/Pagina 7.2

SHAFT WALL FOR ONE PANEL CLASS "EI" FIRE-RESISTANT DOOR, TYPE 71/R-L  
VANO MURATURA PER PORTA 1 ANTA RESISTENTE AL FUOCO CLASSE "EI", TIPO 71/R-L



NICHE INSTALLATION WITH  
STANDARD AND TYPE "BERLINO"  
SUPPORT SILL  
MONTAGGIO IN NICCHIA CON  
SOTTOSOGLIA STANDARD E  
TIPO "BERLINO"

WALL INSTALLATION WITH  
TYPE "BERLINO" SUPPORT SILL  
MONTAGGIO A SBALZO CON  
SOTTOSOGLIA TIPO "BERLINO"



WALL INSTALLATION WITH  
STANDARD SUPPORT SILL  
MONTAGGIO A SBALZO CON  
SOTTOSOGLIA STANDARD

DIMENSIONS ARE CHANGEABLE  
ON REQUEST WITHIN THE LIMITS  
CONSENTED BY THE TESTINGS

\* LE QUOTE CON ASTERISCO SONO  
VARIABILI A RICHIESTA ENTRO I  
LIMITI CONSENTITI DAI COLLAUDI

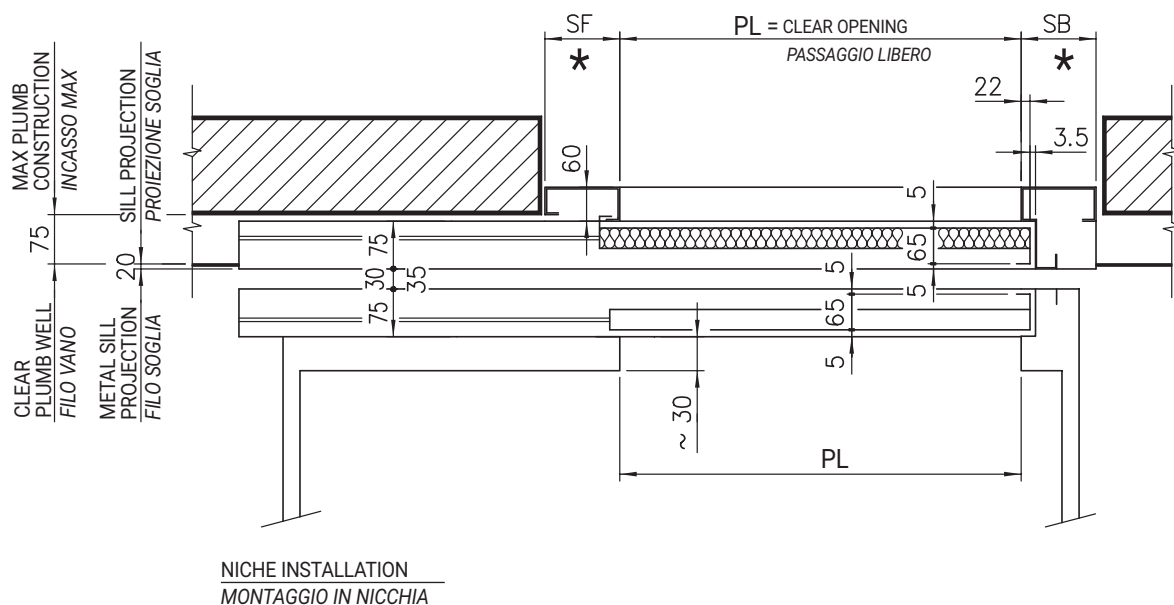
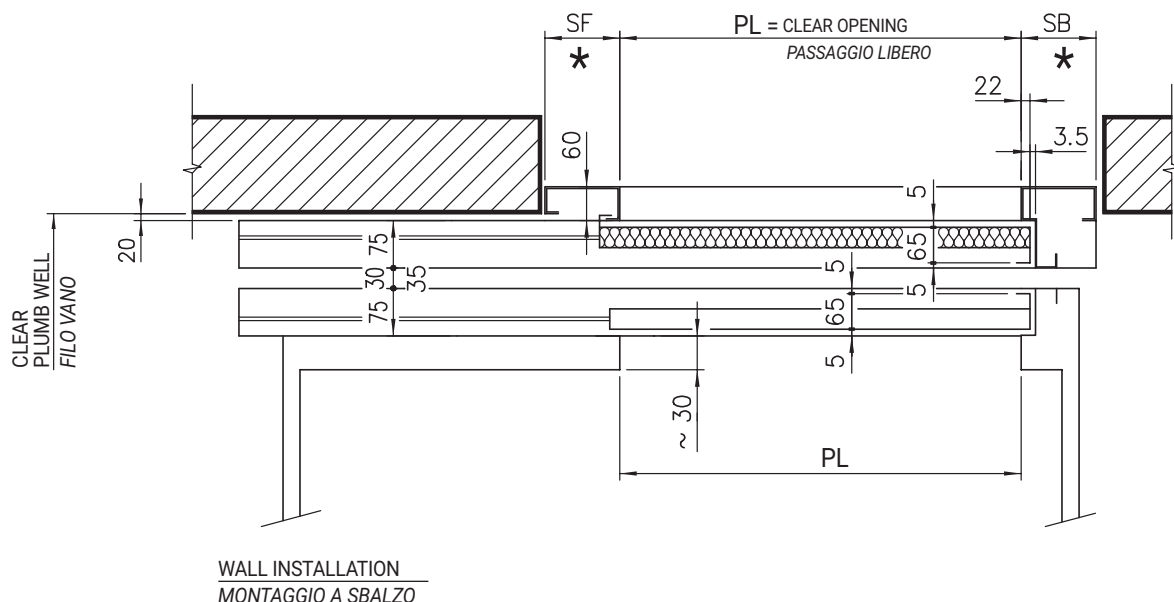
LEFT HAND PORTA SX	AS DRAWN A DISEGNO
RIGHT HAND PORTA DX	SYMMETRICALLY OPPOSITE SIMMETRICA

# AUTOMATIC DOORS SERIES 3201-PEGASUS PORTE AUTOMATICHE SERIE 3201-PEGASUS

Code/Codice TC.2.002008.EN  
Version/Versione /  
Date/Data 12.10.2010  
Page/Pagina 7.3

ARRANGEMENT FOR ONE PANEL CLASS "EI" FIRE-RESISTANT DOOR, TYPE 71-72/R-L

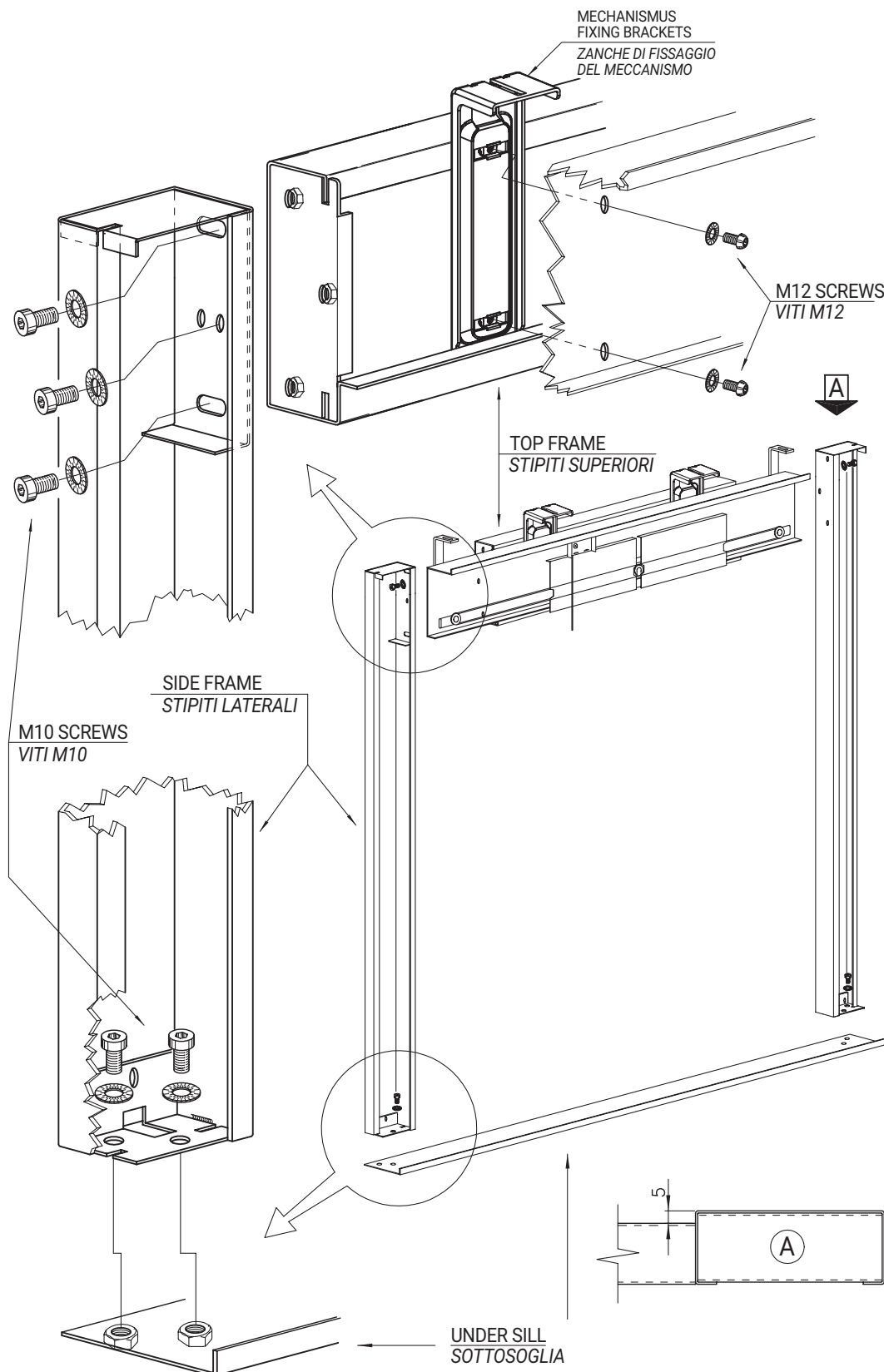
ACCOPPIAMENTO PER PORTA 1 ANTA RESISTENTE AL FUOCO CLASSE "EI", TIPO 71-72/R-L



# AUTOMATIC DOORS SERIES 3201-PEGASUS PORTE AUTOMATICHE SERIE 3201-PEGASUS

Code/Codice TC.2.002008.EN  
Version/Versione /  
Date/Data 12.10.2010  
Page/Pagina 8.1

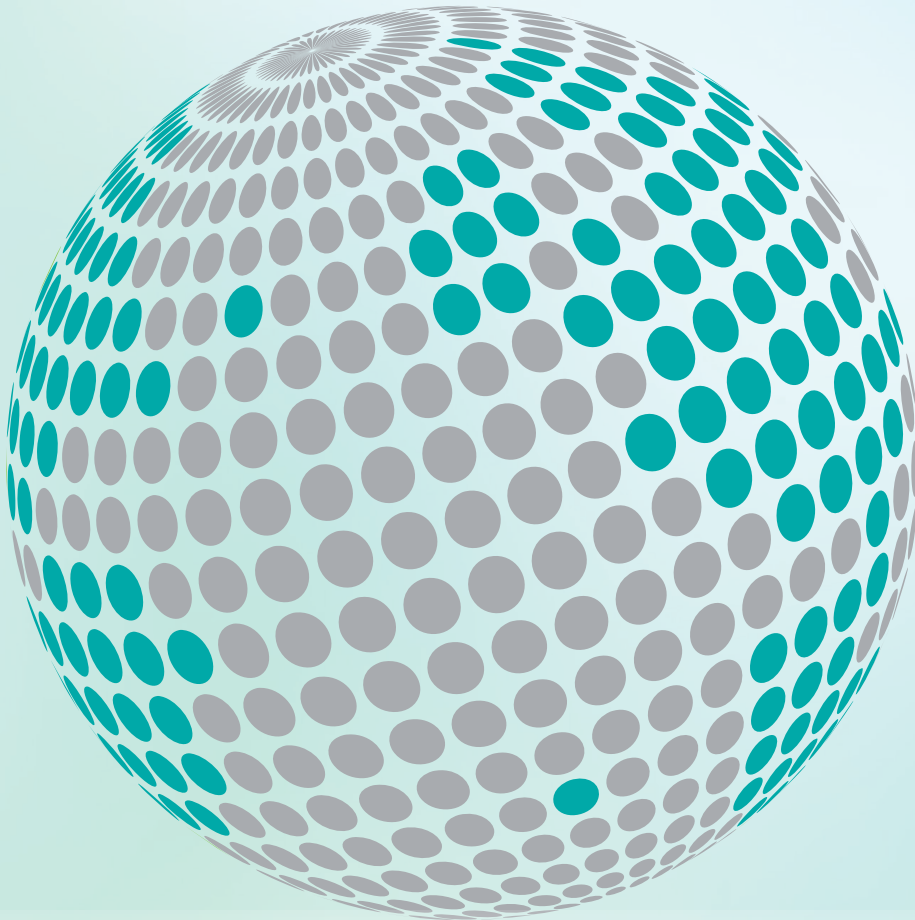
## ASSEMBLING OF TOP FRAME DISASSEMBLED MONTAGGIO STIPITI SMONTABILI







**YOUR GLOBAL PARTNER FOR COMPONENTS,  
MODULES AND SYSTEMS IN THE ELEVATOR INDUSTRY**



*safety* **in** *motion*™

[www.wittur.com](http://www.wittur.com)

More information  
about Wittur Group  
available on-line.

