

CAR AND LANDING DOOR FOR HIGH RISE APPLICATIONS

[®] PEGASUS Skyline



CAR AND LANDING DOOR FOR HIGH RISE APPLICATIONS

Wittur Doors Portfolio

TRAFFIC	RESIDENTIAL	HOTEL & PUBLIC BUILDINGS	INDUSTRY	PUBLIC TRANSPORT
LOW TRAFFIC	MDS1 AUGUSTA	HYDRA	PEGASUS TAURUS	HYDRA PEGASUS
MEDIUM TRAFFIC	HYDRA	PEGASUS	TAURUS	PEGASUS
HIGH PERFORMANCE	HYDRA	PEGASUS	TAURUS	PEGASUS
SPECIAL PANORAMIC	HYDRA	HYDRA PEGASUS NETTUNO LUNA		PEGASUS NETTUNO LUNA
HIGH RISE	PEGASUS Skyline	PEGASUS Skyline		
MODERNISATION	PIUMA FINELINE HYDRA 3000 ECO BUS	FINELINE HYDRA 3000 PEGASUS	PEGASUS TAURUS	PEGASUS
MARINE				PEGASUS

CAR AND LANDING DOOR FOR HIGH RISE APPLICATIONS

PEGASUS Skyline



DURABLE AND RELIABLE

Reliable and robust structure designed for high speed, high traffic lift systems.

FAST AND SILENT

Fast and silent door opening ("high performance rollers", fixed external counterweight, door lock mounted on bearings).

DESIGN

A range of design solutions and options makes Pegasus Skyline an ideal choice for high speed installations: "Rush Hour" option adjusts door speed according to time of day; labyrinth on both door opening and closing side avoid air turbulence through the chinks.

WIDE RANGE OF DOORS

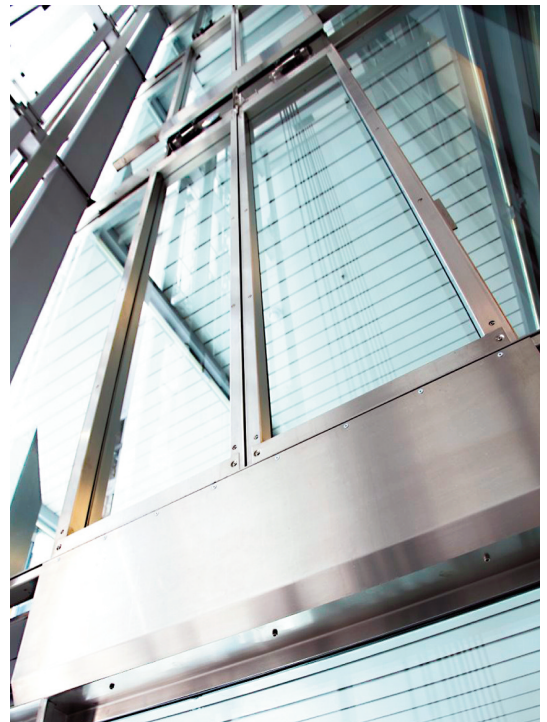
Wittur Pegasus Skyline is available in a wide range of door types to fulfil any installation requirement, from single panel to 4-panel central opening.

WIDE RANGE OF FINISHING AND OPTIONS

A variety of available finishes and options including stainless steel cladding, glass framed panels, hidden sill makes it easy to adapt Pegasus Skyline to any level of interior design.

ENERGY EFFICIENCY








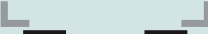




SUPRA brushless door drive can move heavy weight panels with low energy consumption per cycle.



CAR AND LANDING DOOR FOR HIGH RISE APPLICATIONS

PEGASUS Skyline

PRODUCT RANGE

POS.	LANDING DOORS		CAR DOORS		C.O.* mm		C.H.* mm	
	TYPE	ILLUSTRATION	TYPE	ILLUSTRATION	Min.	Max.	Min.	Max.
DOOR WITH OPERATOR ABOVE	01/C		02/C		800	1400	2000	2800
	11/R		12/R		800	1400	2000	2800
	11/L		12/L					
	41/C		42/C		1400	1800	2000	2800
	71/R		72/R		800	1400	2000	2800
	71/L		72/L					

* Intermediate C.O. and C.H. are available in steps of 50 mm

Door Type	Sill Track Pack without Cover Plate (mm)
01 - 02	180
11 - 12	210
41 - 42	210
71 - 72	180

Door Type	Sill Track Pack with Cover Plate (mm)
01 - 02	180
11 - 12	270
41 - 42	270
71 - 72	180

CAR AND LANDING DOOR FOR HIGH RISE APPLICATIONS

PEGASUS Skyline



CERTIFICATIONS

GENERAL LIFT REGULATION AND STANDARD:

- EN81-1 + A3:2009;
- EN81-2 + A3:2009;
- Guideline nr. 782 01/10/2009;
- Lift Directive 95/16/EC.

FIRE AND ANTIVANDAL CERTIFICATIONS:

	CERTIFICATION	PSK		PSK GLASS FRAMED	
		CO (mm)	CH (mm)	CO (mm)	CH (mm)
EUROPE	EN81-58 EW 30'	800-1400	2000-2800	800-1400	2000-2500
	T01	800-1400	2000-2800	800-1400	2000-2500
	T11	800-1400	2000-2800	800-1400	2000-2500
	T41	1400-2000	2000-2800	1400-2000	2000-2500
	T71	800-1400	2000-2800		
	EN81-58 E 60'	800-1400	2000-2800		
	T01	800-1400	2000-2800		
	T11	800-1400	2000-2800		
	T41	1400-2000	2000-2800		
	T71	800-1400	2000-2800		
	EN81-58 E 90'	800-1400	2000-2800	800-1400	2000-2500
	T01	800-1400	2000-2800	800-1400	2000-2500
	T11	800-1400	2000-2800	800-1400	2000-2500
	T41	1400-2000	2000-2800	1400-2000	2000-2500
	T71	800-1400	2000-2800		
	EN81-58 E 120'	800-1400	2000-2800		
	T01	800-1400	2000-2800		
	T11	800-1400	2000-2500		
	T41	1400-2000	2000-2500		
	T71	800-1400	2000-2500		
	EN81-58 EI 60'	800-1400	2000-2800		
	T01	800-1400	2000-2800		
	T11	800-1400	2000-2800		
	T41	1400-2000	2000-2800		
	T71	800-1400	2000-2800		
	EN81-58 EI 120'	800-1400	2000-2800		
	T01	800-1400	2000-2800		
	T11	800-1400	2000-2500		
	T41	1400-2000	2000-2500		
	T71	800-1400	2000-2500		

	CERTIFICATION	PSK		PSK GLASS FRAMED	
		CO (mm)	CH (mm)	CO (mm)	CH (mm)
UK	BS 476-22 RE 120'	800-1400	2000-2300		
	T01	800-1400	2000-2300		
	T11	800-1400	2000-2300		
	T41	1400-2000	2000-2800		
	T71				
UK	BS 476-22 RE 60'			800-1100	2000-2100
	T01			800-1100	2000-2100
	T11			800-1100	2000-2100
	T41			1400-2000	2000-2100
	T71				
DE	DIN 18091	800-1400	2000-2500		
	T01	800-1400	2000-2500		
	T11	800-1400	2000-2500		
	T41	1400-2000	2000-2500		
	T71				
CAT. 1*	ANTIVANDAL	800-1400	2000-2600	800-1400	2000-2600
	T01	800-1400	2000-2600	800-1400	2000-2600
	T11	800-1400	2000-2600	800-1400	2000-2600
	T41				
	T71				
CAT. 2*	ANTIVANDAL	800-1400	2000-2600		
	T01	800-1400	2000-2600		
	T11	800-1400	2000-2600		
	T41				
	T71	800-1100	2000-2600		

* for other dimensions and configurations please refer to Wittur

NOTICE: for other countries please refer to Wittur

PEGASUS HIGH RISE

PEGASUS Skyline

LANDING DOOR FEATURES

LANDING DOOR	MEDIUM 4m/s<=speed<6m/s	
	Standard execution	Option
Door closing	Fixed external counterweight	Spring devices
DOM	-	○
Door Panels	With Labyrinths and Runby	- Double skin with noise insulation on not fire rated execution - fire rated executions
Toe guard	Galvanised	-
Lock roller	High performance	-
Shoe	High speed application design, not available for antivandal execution	-
Switch cover	IP20	IP54/IP67
Air and water seal	-	○
Antivandal execution	-	Category 1 & Category 2 [see certification table]
Hidden bottom sill	-	Only for 01/C and 71/R-L not available for antivandal and fire rated execution
Prewiring	●	-
Mechanism cover plate	-	○

LANDING DOOR	HIGH speed=>6m/s	
	Standard execution	Option
Door closing	Fixed external counterweight	Spring devices
DOM	-	○
Door Panels	- Double skin and Mineral wool on not fire rated execution (noise insulation) With Labyrinths and Runby	- fire rated executions
Toe guard	Galvanised	-
Lock roller	High performance	-
Shoe	High speed application design, not available for antivandal execution	-
Switch cover	IP20	IP54/IP67
Air and water seal	Standard	-
Antivandal execution	-	Category 1 & Category 2 [see certification table]
Hidden bottom sill	-	Only for 01/C and 71/R-L not available for antivandal and fire rated execution
Prewiring	●	-
Mechanism cover plate	-	○

● always available
as standard execution

○ available as option

PEGASUS HIGH RISE

PEGASUS Skyline



CAR DOOR FEATURES

CAR DOOR	MEDIUM 4m/s ≤ speed < 6m/s	
	Standard execution	Option
Drive	SUPRA	-
Rollers	Reinforced; High performance	-
Coupler	HR configuration	-
Door Panels	With Runby	Double skin with noise insulation
Car door lock	•	-
Evacuation rope	•	-
Passengers protective devices	WSE* prearrangement	-
Fixing	frontal with control box apart	-
Air and water seal	-	○
Rush hour setting	-	○
Antivandal execution	-	Category 1 & Category 2 [see certification table]
Antipanic functionality	-	○
Hidden bottom sill	-	Only for 02/C and 72/R-L
Shoes	High speed application design, not available for antivandal execution	-
Retractable safety edge	-	○
Traction belt	Reinforced	-
Operator cover	-	○

CAR DOOR	HIGH speed ≥ 6m/s	
	Standard execution	Option
Drive	SUPRA	-
Rollers	Reinforced; High performance	-
Coupler	HR configuration	-
Door Panels	Double skin with noise insulation	-
Car door lock	•	-
Evacuation rope	•	-
Passengers protective devices	WSE* prearrangement	-
Fixing	frontal with control box apart	-
Air and water seal	•	-
Rush hour setting	-	○
Antivandal execution	-	Category 1 & Category 2 [see certification table]
Antipanic functionality	-	○
Hidden bottom sill	-	Only for 02/C and 72/R-L
Shoes	High speed application design, not available for antivandal execution	-
Retractable safety edge	-	○
Traction belt	Reinforced	-
Operator cover	-	○

* WSE = Wittur electronic Safety Edge

• always available
as standard execution

○ available as option

CAR AND LANDING DOOR FOR HIGH RISE APPLICATIONS

PEGASUS Skyline

DRIVES AND FINISHES

DRIVE	SUPRA
Controller	VVVF Converter
operating temperature range (shaft room temp.)	-20°C/+50°C
operating temperature range (storage temp.)	-45°C/+70°C
advanced opening	●
Self learning	●
Adjustment by PC	●
Supervision function	●
Data stored permanently	●
Nudging	●
Protective device	24V DC+10%/150mA
Emergency battery drive	18-26 VDC/max 15A
Average consumption	170W
Max consumption	900W
Power supply	(127V ; 6A) +/-20% (230V ; 4A) +/-20% 50/60Hz
Electromagnetic compatibility	immunity and emission protection acc. EN 12015/16
CAN OPEN TM	●

FINISHES	Standard execution	Option
Prime finish RAL 7032 painted	●	-
RAL painted	-	G14 table
Stainless Steel AISI 304 Brushed	-	○
Stainless Steel AISI 304 Scotch Brite	-	○
Stainless Steel AISI 304 Linen	-	○
Stainless Steel AISI 304 Leather	-	○
Other Cladding on demand	-	○

● always available
as standard execution

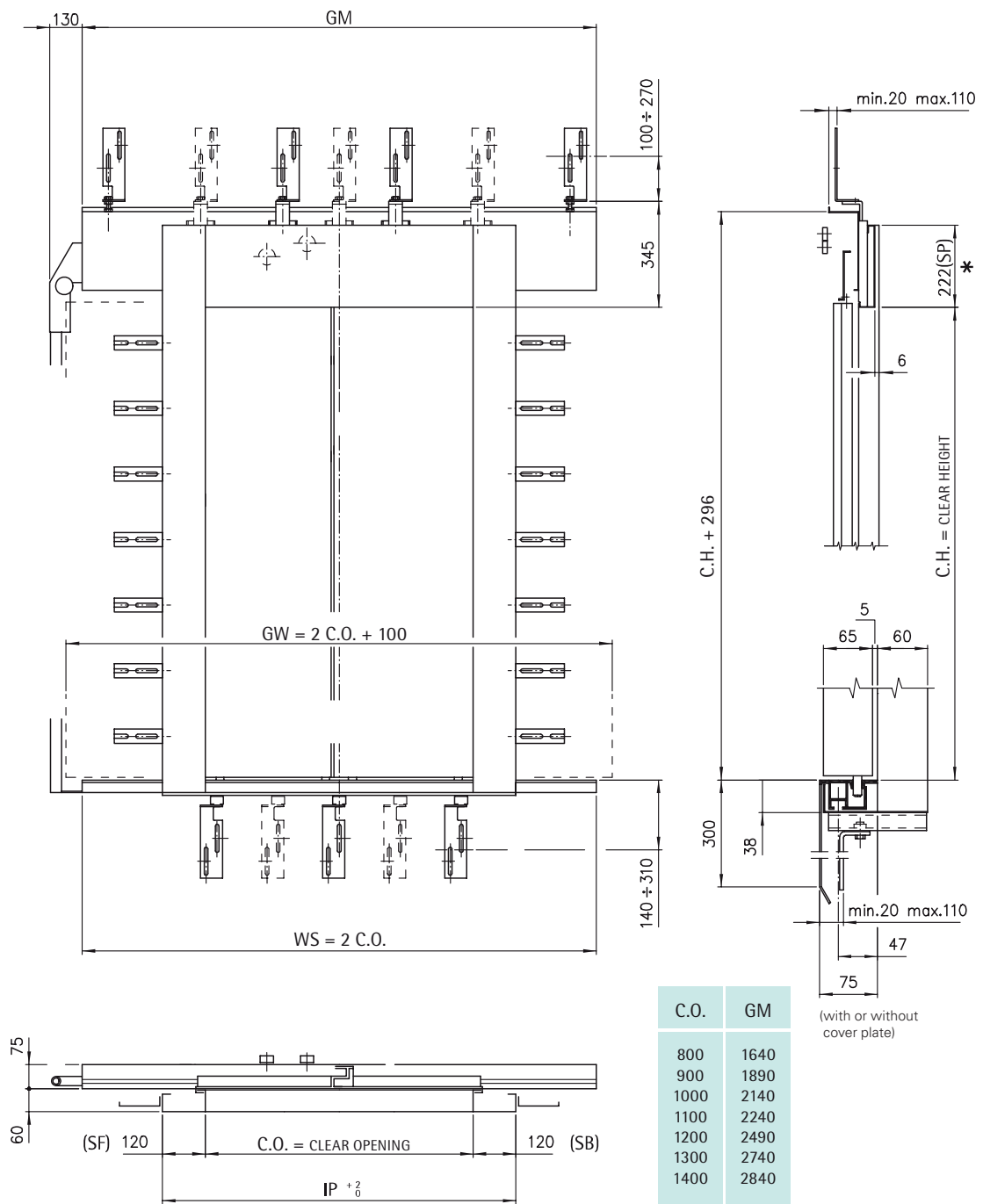
○ available as option

CAR AND LANDING DOOR FOR HIGH RISE APPLICATIONS

PEGASUS Skyline

TECHNICAL DRAWING

TWO PANELS CENTRAL OPENING LANDING DOOR, TYPE 01/C C.O. = 800÷1400 mm

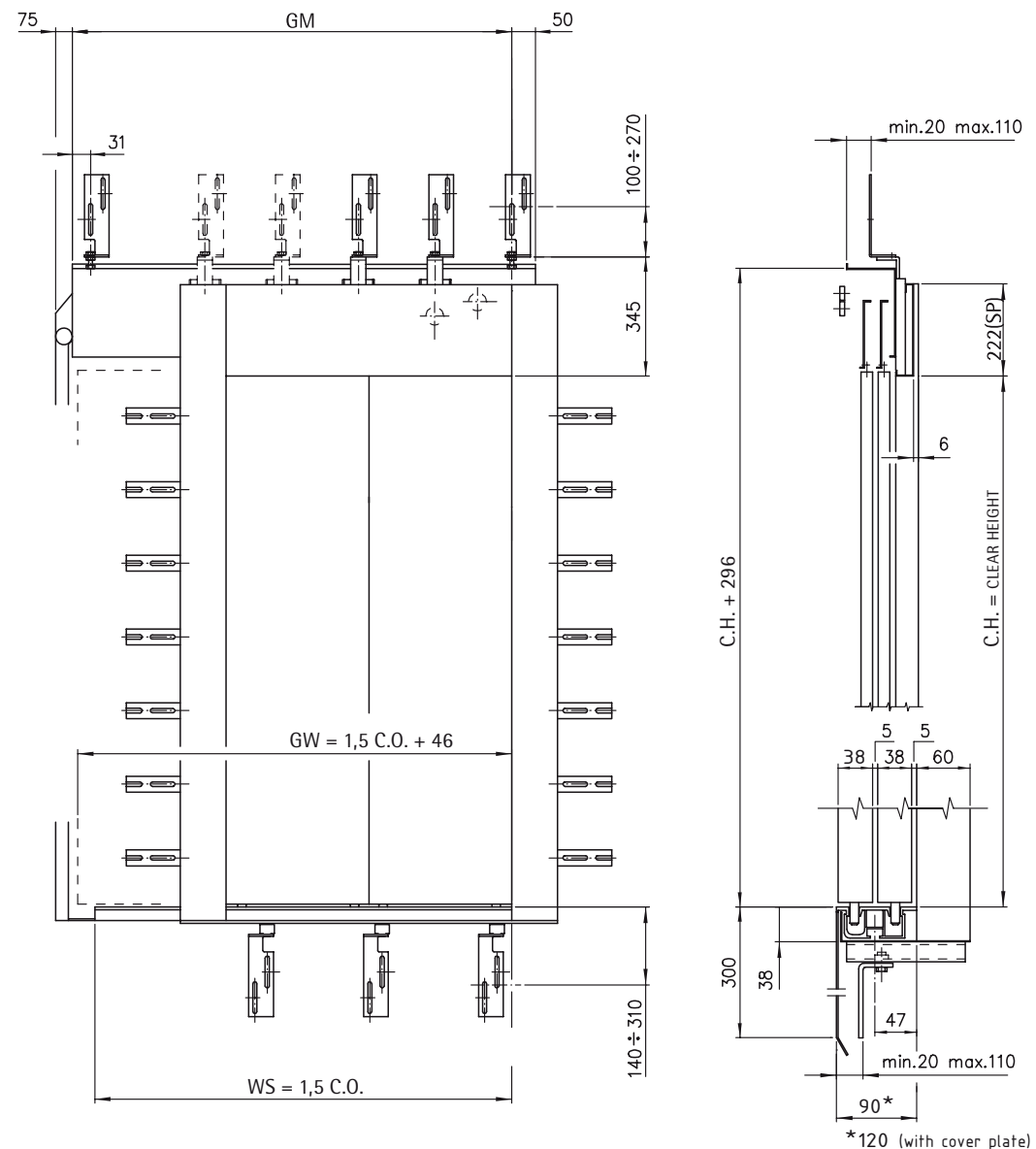


CAR AND LANDING DOOR FOR HIGH RISE APPLICATIONS

PEGASUS Skyline

TECHNICAL DRAWING

TWO PANELS CLASS TELESCOPIC LANDING DOOR, TYPE 11/R-L C.O. = 800÷1400 mm



C.O.	GM
800	1248
900	1423
1000	1598
1100	1698
1200	1873
1300	2048
1400	2148

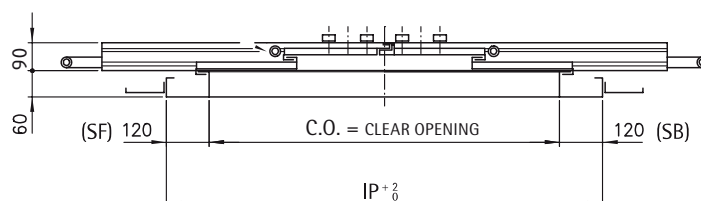
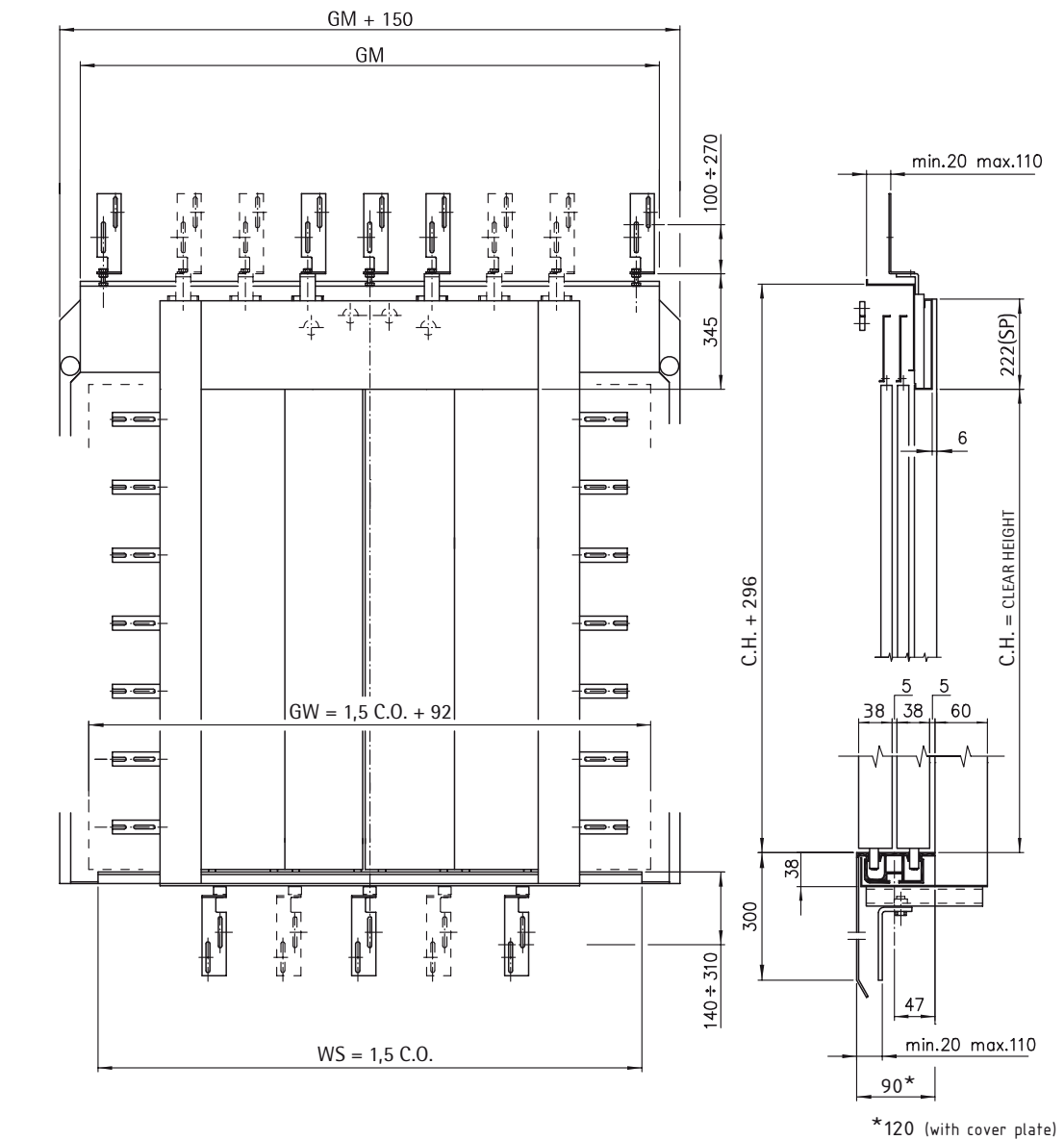
CAR AND LANDING DOOR FOR HIGH RISE APPLICATIONS

PEGASUS Skyline



TECHNICAL DRAWING

FOUR PANELS CENTRAL OPENING LANDING DOOR, TYPE 41/C C.O. = 1400÷1800 mm



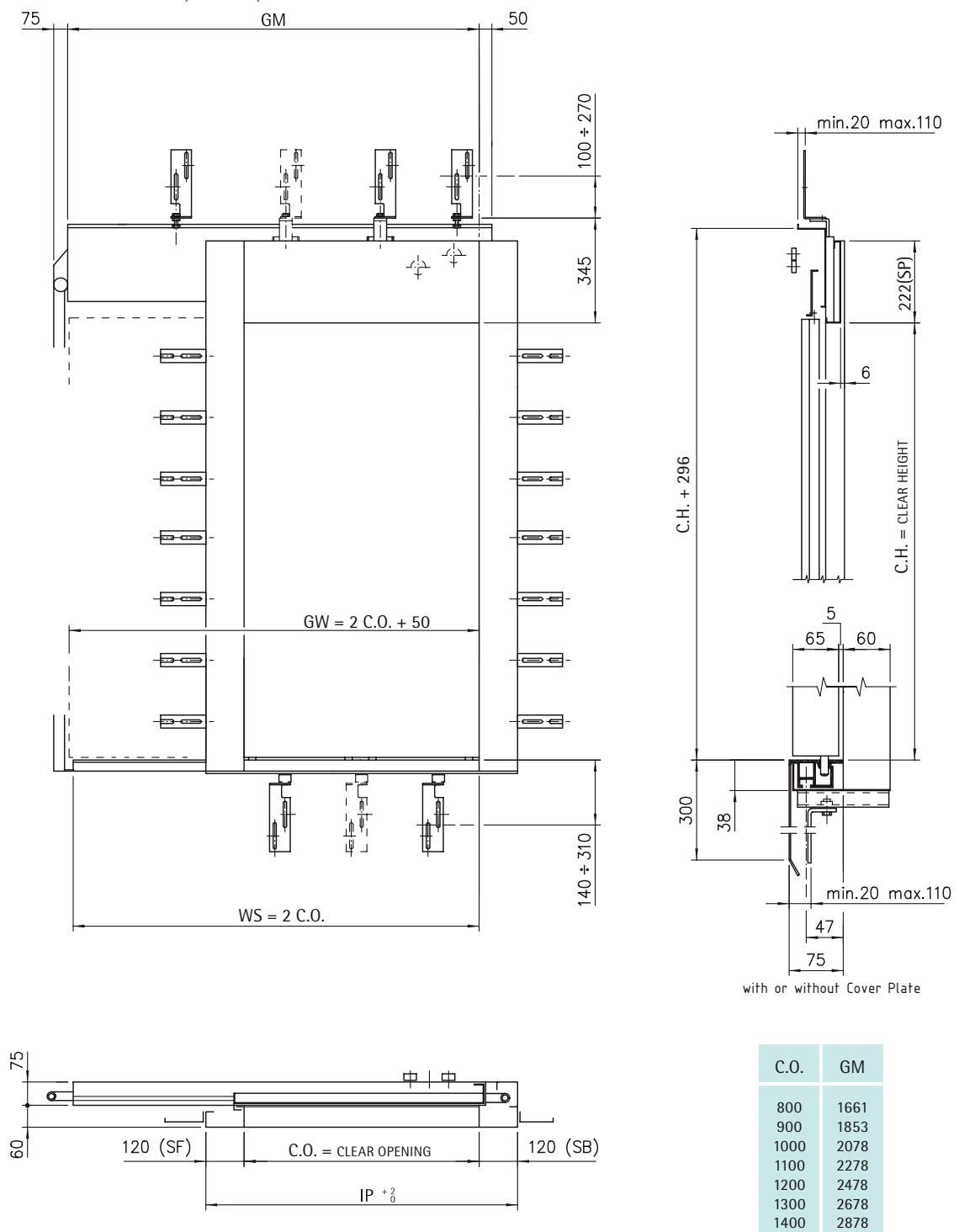
C.O.	GM
1400	2280
1500	2380
1600	2480
1700	2730
1800	2830

CAR AND LANDING DOOR FOR HIGH RISE APPLICATIONS

PEGASUS Skyline

TECHNICAL DRAWING

ONE PANEL LANDING DOOR, TYPE 71/R-L C.O. = 800÷1400 mm



CAR AND LANDING DOOR FOR HIGH RISE APPLICATIONS

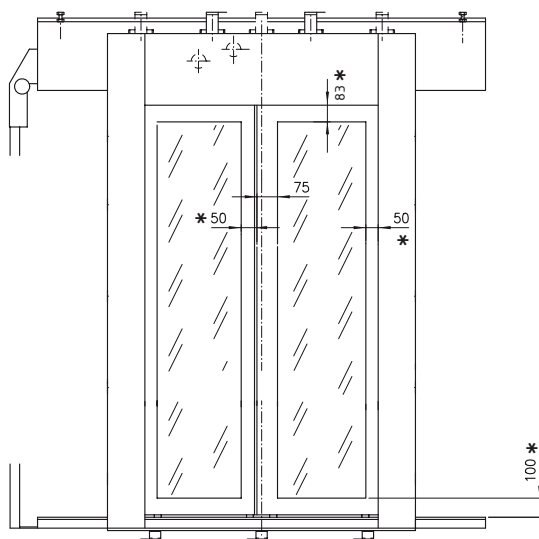
PEGASUS Skyline



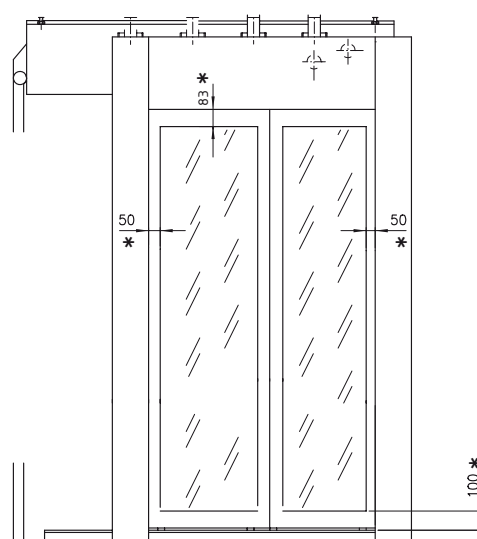
TECHNICAL DRAWING

AUTOMATIC DOORS WITH GLASS-FRAMED PANELS

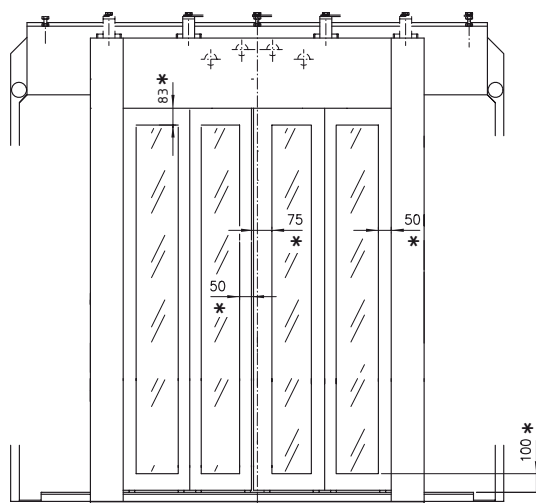
TWO PANELS CENTRAL OPENING LANDING DOOR
TYPE 01/C C.O. = 800 ÷ 1400 mm



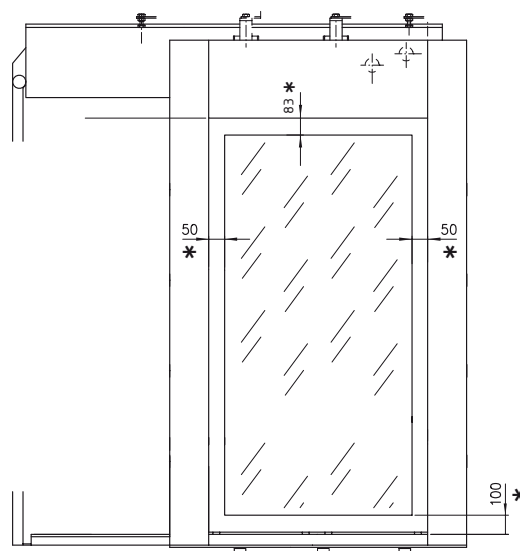
TWO PANELS TELESCOPIC LANDING DOOR
TYPE 11/R-L C.O. = 800 ÷ 1400 mm



FOUR PANELS CENTRAL OPENING LANDING DOOR
TYPE 41/C C.O. = 1400 ÷ 1800 mm



ONE PANEL LANDING DOOR TYPE 71/R-L C.O. = 800 ÷ 1400 mm



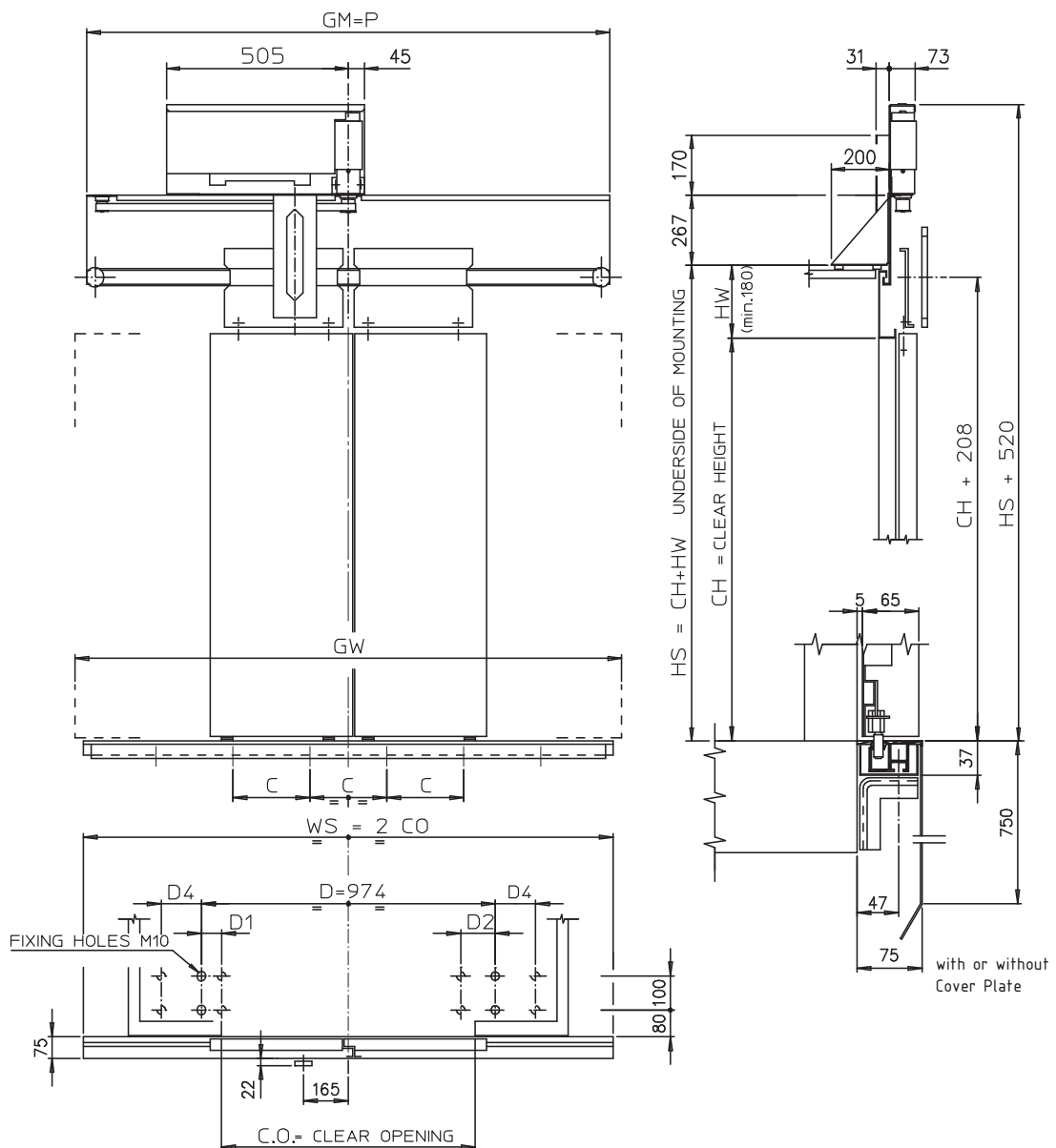
* DIMENSIONS ARE CHANGEABLE ON REQUEST WITHIN THE LIMITS CONSENTED BY THE TESTINGS

CAR AND LANDING DOOR FOR HIGH RISE APPLICATIONS

PEGASUS Skyline

TECHNICAL DRAWING

TWO PANELS CENTRAL OPENING CAR DOOR, TYPE 02/C C.O. 800÷1400 mm



CAR AND LANDING DOOR FOR HIGH RISE APPLICATIONS

PEGASUS Skyline



TECHNICAL DRAWING

TWO PANELS CENTRAL OPENING CAR DOOR, TYPE 02/C C.O. 800÷1400 mm

CO	C	D1	D2	D3	D4	GM=P
800		62	217	/		1640
900	400				/	1890
1000						2140
1100						2240
1200		/		225		2490
1300	550				163	2740
1400						2840

CAR DOOR TOTAL WEIGHT (kg)
CH = 2000

CO	(1)	(2)
800	126	185
900	134	198
1000	157	220
1100	160	227
1200	168	239
1300	195	258
1400	200	266

(1) WEIGHTS FOR DOORS WITH STANDARD AND DOUBLE SKIN PANELS

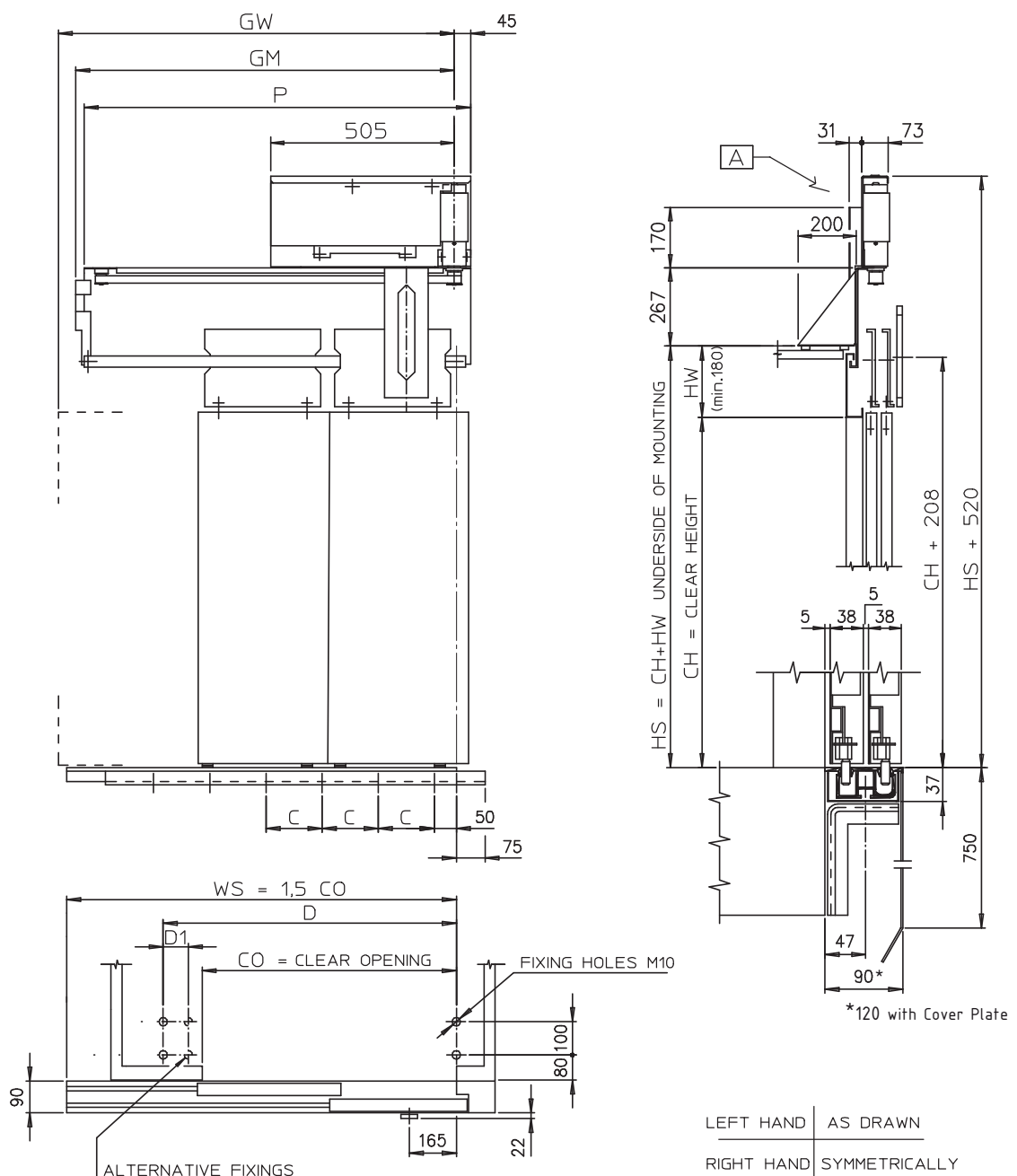
(2) WEIGHTS FOR DOORS WITH GLASS AND GLASS-FRAMED PANELS

CAR AND LANDING DOOR FOR HIGH RISE APPLICATIONS

PEGASUS Skyline

TECHNICAL DRAWING

TWO PANELS TELESCOPIC CAR DOOR, TYPE 12/R-L C.O. = 800÷1400 mm



CAR AND LANDING DOOR FOR HIGH RISE APPLICATIONS

PEGASUS Skyline



TECHNICAL DRAWING

TWO PANELS TELESCOPIC CAR DOOR, TYPE 12/R-L C.O. = 800÷1400 mm

CO	C	D	D1	GW	GM	P
800	250	912	217	1225	1210	1250
900				1375	1385	1425
1000	400	1137		1525	1560	1600
1100			1675	1660	1700	
1200			/	1825	1835	1875
1300	550	1362		1975	2010	2050
1400				2125	2110	2150

CAR DOOR TOTAL WEIGHT (kg)		
CH = 2000		
CO	(1)	(2)
800	121	173
900	135	191
1000	153	208
1100	155	214
1200	171	234
1300	190	246
1400	194	254

(1) WEIGHTS FOR DOORS WITH STANDARD AND DOUBLE SKIN PANELS

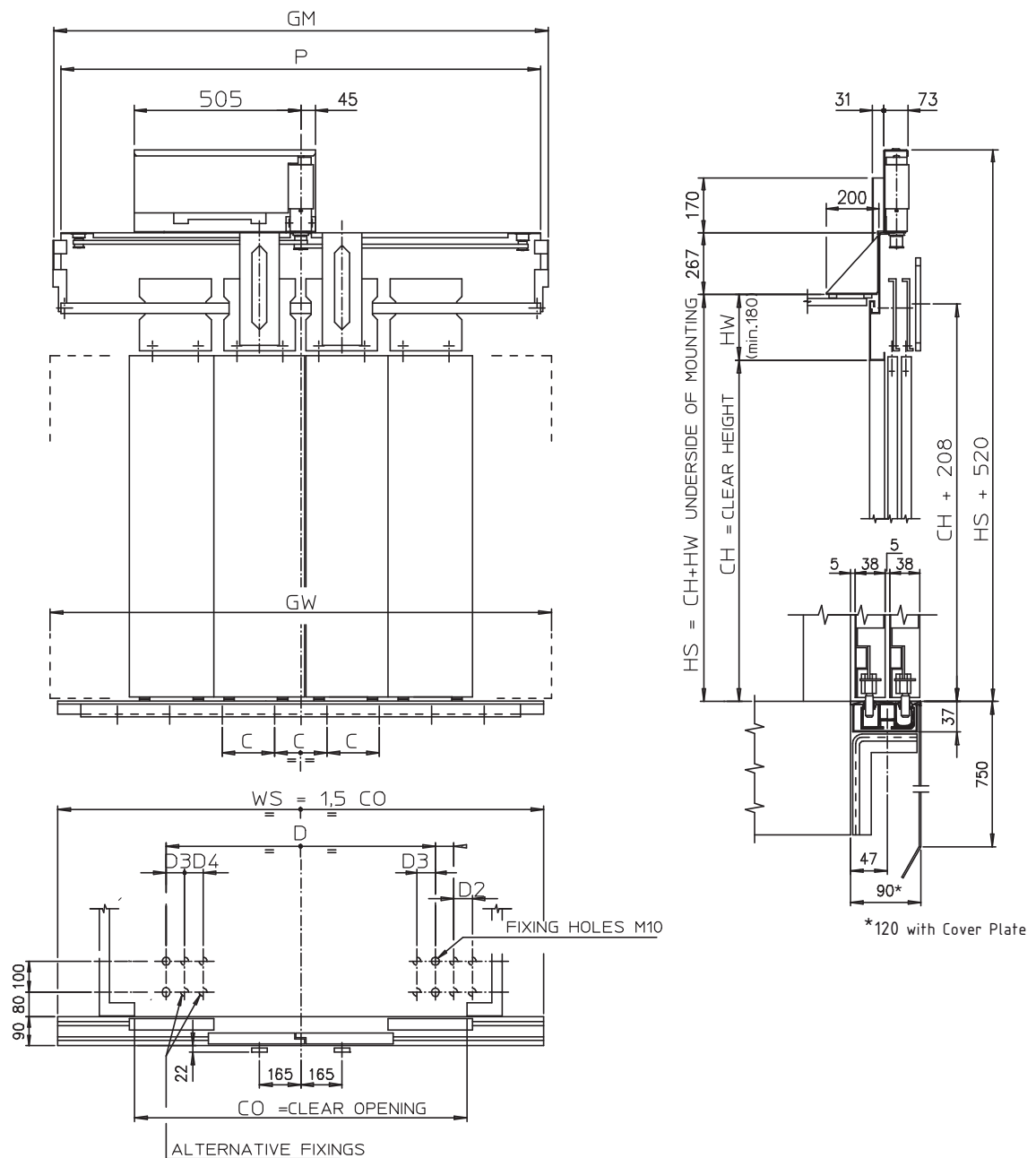
(2) WEIGHTS FOR DOORS WITH GLASS AND GLASS-FRAMED PANELS

CAR AND LANDING DOOR FOR HIGH RISE APPLICATIONS

PEGASUS Skyline

TECHNICAL DRAWING

FOUR PANELS CENTRAL OPENING CAR DOOR, TYPE 42/C C.O. = 1400÷1800 mm



CAR AND LANDING DOOR FOR HIGH RISE APPLICATIONS

PEGASUS Skyline



TECHNICAL DRAWING

FOUR PANELS CENTRAL OPENING CAR DOOR, TYPE 42/C C.O. = 1400÷1800 mm

CO	C	D	D2	D3	D4	M1	GM	P	GW	WS
1400	550	1424	/	225	62	820	2205	2190	2150	2100
1450							2255	2240	2225	2175
1500							2305	2290	2300	2250
1550							2355	2340	2375	2325
1600		2405	2390	2450	2400					
1650		974	163	/	/	610	2455	2440	2525	2475
1700							2655	2640	2600	2550
1750							2705	2690	2675	2625
1800	2755						2740	2750	2700	

CAR DOOR TOTAL WEIGHT (kg)		
CH = 2000		
PL	(1)	(2)
1400	189	284
1450	190	287
1500	204	303
1550	206	307
1600	207	310
1650	208	313
1700	211	318
1750	212	321
1800	247	358

(1) WEIGHTS FOR DOORS WITH STANDARD AND DOUBLE SKIN PANELS

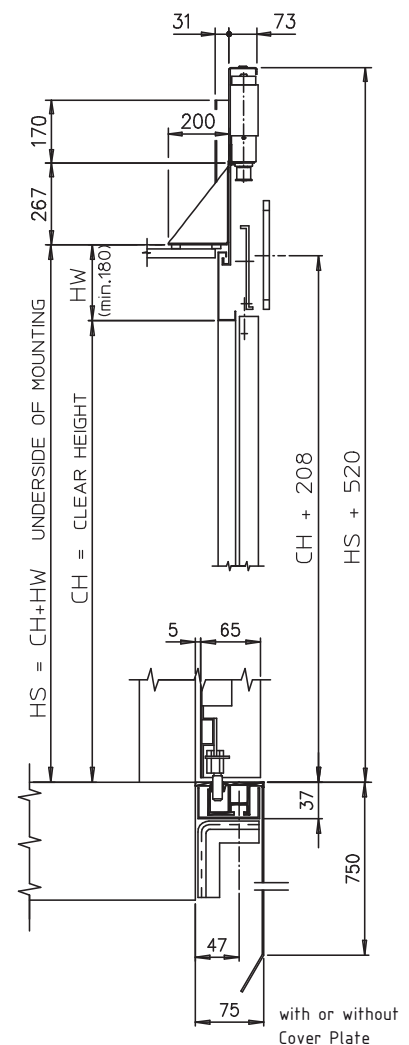
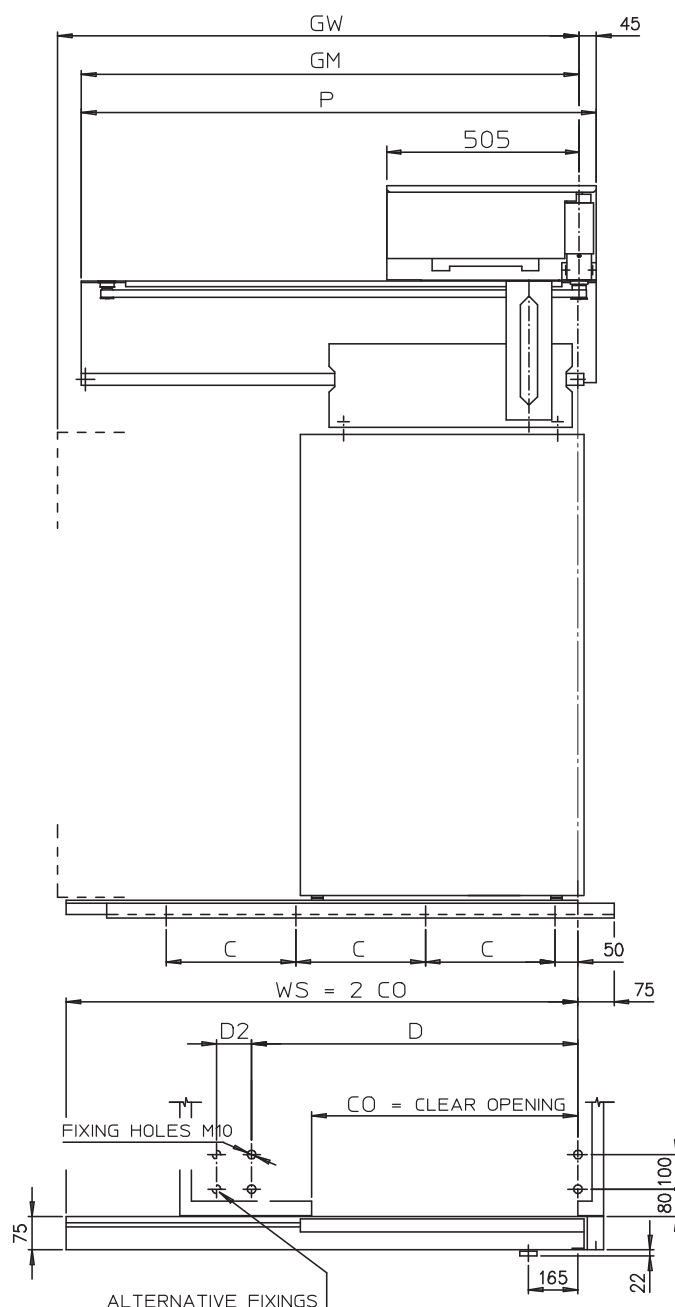
(2) WEIGHTS FOR DOORS WITH GLASS AND GLASS-FRAMED PANELS

CAR AND LANDING DOOR FOR HIGH RISE APPLICATIONS

PEGASUS Skyline

TECHNICAL DRAWING

ONE PANEL CAR DOOR, TYPE 72/R-L C.O. = 800÷1400 mm



LEFT HAND	AS DRAWN
RIGHT HAND	SYMMETRICALLY

CAR AND LANDING DOOR FOR HIGH RISE APPLICATIONS

PEGASUS Skyline



TECHNICAL DRAWING

ONE PANEL CAR DOOR, TYPE 72/R-L C.O. = 800÷1400 mm

CO	C	D	D2	GW	GM	P
800	475	1300	287	1650	1691	1736
900				1850	1883	1928
1000	550			2050	2108	2153
1100	495			2250	2308	2353
1200	446			2450	2508	2553
1300	466			2650	2708	2753
1400	486			2850	2908	2953

CAR DOOR TOTAL WEIGHT (kg)
CH = 2000

CO	(1)	(2)
800	105	139
900	114	152
1000	130	169
1100	150	193
1200	162	205
1300	167	214
1400	173	223

(1) WEIGHTS FOR DOORS WITH STANDARD AND DOUBLE SKIN PANELS

(2) WEIGHTS FOR DOORS WITH GLASS AND GLASS-FRAMED PANELS



WITTUR

AUTOMATIC LANDING DOOR MODEL "PEGASUS SKYLINE"

Customer: _____

Order N° : _____

Date: _____

Delivery Address: _____

(Reserved Wittur S.p.A.)

CLEAR OPENING (CO) _____ X (CH) _____				EXECUTION		<input type="checkbox"/> BS 476-22 RE..... LIFT SYSTEM SPEED: _____ m/s <input type="checkbox"/> IP20 Standard <input type="checkbox"/> IP21 Anti-dropping <input type="checkbox"/> IP54 Waterproof <input type="checkbox"/> IP67	
Type	Q.ty	Door Type (from landing side)					
01/C		 Sill mm : 75		<input type="checkbox"/> EN81-58 E..... <input type="checkbox"/> EN81-58 EI..... <input type="checkbox"/> EN81-58 EW..... <input type="checkbox"/> DIN 18091			
11/R		RIGHT	 Sill mm : 120	<input type="checkbox"/> Frames with sill-covering <input type="checkbox"/> Double skin frames <input type="checkbox"/> Double skin frames filled with rock wool <input type="checkbox"/> Special frames with following: Overall dimension (L x H) _____ x _____ Top frame mm _____ Right frame m/m _____ Left frame mm _____ <input type="checkbox"/> Frame with different standard thickness: mm _____ <input type="checkbox"/> N° _____ push-button hole: mm _____ x _____ Height mm _____ (*) <input type="checkbox"/> N° _____ 2° push-button hole: mm _____ x _____ Height mm _____ (*) <input type="checkbox"/> Push-button indicator hole: mm _____ x _____ (*) Dimensions from floor to bottom-edge of push-button <input type="checkbox"/> Antirust painted or : _____ <input type="checkbox"/> Plated with: _____ <input type="checkbox"/> Painted frames: _____ <input type="checkbox"/> Frames with anti-trapping device			
11/L		LEFT	 Sill mm : 120	<input type="checkbox"/> Frames finished floor level: <input type="checkbox"/> with metal sheet in sight <input type="checkbox"/> without metal sheet in sight			
41/C		 Sill mm : 120		EMERGENCY KEY <input type="checkbox"/> Standard emergency (only for complete doors) <input type="checkbox"/> Emergency on the panel			
71/R		RIGHT	 Sill mm : 75	<input type="checkbox"/> BRACKET EQUIPMENT <input type="checkbox"/> Standard for brick wall <input type="checkbox"/> Supply screw anchors: _____ <input type="checkbox"/> Other brackets code : _____ (As per code 3201.32.0260)			
71/L		LEFT	 Sill mm : 75	<input type="checkbox"/> PANELS <input type="checkbox"/> Double skin panels <input type="checkbox"/> Standard panels <input type="checkbox"/> Double skin panels filled with rock wool <input type="checkbox"/> Antirust painted panels <input type="checkbox"/> Painted panels : _____ <input type="checkbox"/> Glass framed panels <input type="checkbox"/> Glass framed with Anti-trapping device <input type="checkbox"/> EN81 Adaptation for glass framed panels <input type="checkbox"/> Coated with : _____ <input type="checkbox"/> Prearranged for coating with: _____ thickness mm: _____			
WITH SILL <input type="checkbox"/> YES <input type="checkbox"/> NO <input type="checkbox"/> Aluminium standard <input type="checkbox"/> Iron made <input type="checkbox"/> St. steel sill light execution <input type="checkbox"/> Alum. sill heavy execution <input type="checkbox"/> St. steel made <input type="checkbox"/> Anodized sill • Colour: _____				Toeguard <input type="checkbox"/> YES <input type="checkbox"/> NO			
PACKING : <input type="checkbox"/> Standard pallet <input type="checkbox"/> Wooden crate <input type="checkbox"/> Seaway box							
DELIVERY REQUIRED				NOTES <input type="checkbox"/> Sill with dirt drain holes <input type="checkbox"/> Heated sill <input type="checkbox"/> Hidden sill			

Doc.Cod. 1.SK.U.MKG.107 (Ed.01 - 16_april_2012 gb)

Signature _____

Subject to change without notice!



WITTUR

CAR DOOR DOOR MODEL "PEGASUS SKYLINE"

Customer: _____

Order N° : _____

Date: _____

Delivery Address: _____

(Reserved Wittur S.p.A.)

CLEAR OPENING (CO) _____ x (CH) _____			BELT DRIVEN CAR DOOR OPERATOR	
TYPE	Q.TY	DOOR TYPE (from landing side)	MOTORISATION AND ELECTRICAL PROTECTION	
02/C			<input type="checkbox"/> IP20 <input type="checkbox"/> IP54 <input type="checkbox"/> IP67	
12/R	Right		LIFT SYSTEM SPEED: _____ m/s	
12/L	Left		COUPLED WITH:	
42/C			<input type="checkbox"/> AUTOMATIC SELCOM DOORS:	
72/R	Right		<input type="checkbox"/> Framed Glass Panels	
72/L	Left		<input type="checkbox"/> EN81-58 E..... <input type="checkbox"/> OUTSIDE INSTALLATION (supply assembly drawing)	
			<input type="checkbox"/> EN81-58 EI.....	
			<input type="checkbox"/> EN81-58 EW..... <input type="checkbox"/> PANORAMIC INSTALLATION (supply assembly drawing)	
			<input type="checkbox"/> DIN 18091	
			<input type="checkbox"/> BS 476-22 RE.....	
			<input type="checkbox"/> Positive closing	
			<input type="checkbox"/> Rush hours	
			<input type="checkbox"/> Antipanic functionality	
			<input type="checkbox"/> Closing time compliant with EN81-70 norm	
			INSTALLATION FEATURES	
			<input type="checkbox"/> Top car assembling: external car height from sill edge (HS)* = mm _____	
			(*) Underside of mounting height for other type of doors: Standard CH+180; Max CH+430.	
			<input type="checkbox"/> Front car assembling, box apart (Standard configuration)	
PANELS			PANELS EXECUTION (only if panels are supplied)	
<input type="checkbox"/> Standard panels			<input type="checkbox"/> Prime Finish RAL 7032	
<input type="checkbox"/> Double-plated panels			<input type="checkbox"/> RAL painting catalogue Colours Selcom Code	
<input type="checkbox"/> Framed Glass Panels:			<input type="checkbox"/> RAL G14: 21- _____	
<input type="checkbox"/> Std frame			<input type="checkbox"/> Cladded with: _____	
<input type="checkbox"/> According to drawing			<input type="checkbox"/> Other (detail) _____	
ACCESSORIES FOR DOORS WITH GLASS AND FRAMED GLASS PANELS:			<input type="checkbox"/> Only prearrangement for coating thickness mm _____	
<input type="checkbox"/> EN81 protection profile (standard)				
<input type="checkbox"/> Finger anti-trapping safety device				
SAFETY DEVICE			SILL GROUP	
<input type="checkbox"/> Only prearrangement			<input type="checkbox"/> Supplied (Sill, shoe group, toeguard 750 mm)	
<input type="checkbox"/> Prearrangement and supply			<input type="checkbox"/> With undersill <input type="checkbox"/> With toeguard reinforcement kit	
WITTUR ELECTRONIC SAFETY EDGE:			<input type="checkbox"/> Do not supply toeguard	
<input type="checkbox"/> WSE (standard) <input type="checkbox"/> Retractable safety edge			SILL TYPE (Catalogue dimensions)	
<input type="checkbox"/> Other _____			<input type="checkbox"/> Standard Aluminium sill	
<input type="checkbox"/> With KIT FICO for assembling sill end			<input type="checkbox"/> Reinforced Aluminium sill	
			<input type="checkbox"/> Universal St. Steel (Light Execution)	
			ACCESSORIES:	
			<input type="checkbox"/> Slots for dirt outlet	
			<input type="checkbox"/> Heated sill	
			<input type="checkbox"/> Sill for freight elevators (loading kg _____) type:	
			Iron: <input type="checkbox"/> T80 (Std) <input type="checkbox"/> S100 <input type="checkbox"/> Other _____	
			St. Steel: <input type="checkbox"/> T80 (Std) <input type="checkbox"/> S100 <input type="checkbox"/> Other _____	
			<input type="checkbox"/> Special sill according to drawing	
			<input type="checkbox"/> Supply Full Profiles:	
			<input type="checkbox"/> NO <input type="checkbox"/> YES: <input type="checkbox"/> One (Half-reinf.) <input type="checkbox"/> All (Reinforced)	
PACKING: <input type="checkbox"/> Standard pallet			<input type="checkbox"/> Wooden crate	
<input type="checkbox"/> Seaway box				
DELIVERY REQUIRED			NOTES	

Doc.Cod.1.SK.D.COM.808 (Ed. 01 dated 16_april_2012 gb)

Subject to change without notice!

EXCELLENCE IN SOLUTIONS

Signature _____



EXCELLENCE IN SOLUTIONS



 WITTUR AR BUENOS AIRES	 WITTUR DE WIEDENZHAUSEN	 WITTUR I T BERGAMO
 WITTUR AT SCHEIBBS	 WITTUR ES ZARAGOZA	 WITTUR I T PARMA
 WITTUR AU SYDNEY	 WITTUR FR EVRY	 WITTUR NL ALMERE
 WITTUR BR SAO PAULO	 WITTUR GB MOLD	 WITTUR P L WARSZAWA
 WITTUR CN HONG KONG	 WITTUR HU BUDAPEST	 WITTUR S E SPÅNGA
 WITTUR CN SUZHOU	 WITTUR I L NATANYA	 WITTUR SG SINGAPORE
 WITTUR CZ HUSTOPECE	 WITTUR I N CHENNAI	 WITTUR SK KRUPINA
 WITTUR DE DRESDEN		 WITTUR TR ISTANBUL

WITTUR GROUP

www.wittur.com