

PEGASUS Industrial

LANDING AND CAR DOORS FOR GOODS ELEVATORS
AND INDUSTRIAL APPLICATIONS



WELCOME TO WITTUR!

YOUR GLOBAL PARTNER FOR
COMPONENTS, MODULES AND SYSTEMS
IN THE ELEVATOR INDUSTRY

45+

years of experience
and value creation

**We are your global solution
provider in the elevator world.**

Our experience reaches back 45
years in which we have developed
ourselves into a valuable supplier
for our numerous customers
in more than 60 countries
around the world.

safety *in motion*[™]

The key to our success is based on the ideas, commitment and expertise of our more than 3500 employees worldwide, who contribute to continuous improvement on all levels. Our management as well as our staff are truly global and we encourage the interplay of different cultures and nationalities in our project teams and offer international career paths. In each of our 10 manufacturing sites we have committed ourselves to the same standards of excellence, assuring that our products are of highest quality, produced efficiently by applying environmentally friendly manufacturing processes.

10
manufacturing sites

60
countries



3.500
employees

safety **in** *motion*™



Wittur is Safety in Motion! We are a driving force for safety in the elevator industry and are always looking for possibilities to improve our performance. The high level of safety we supply is not only reflected in our products and solutions but is also visible at each of our manufacturing sites. It is our responsibility to assure that our employees return home safely every day. This holistic safety standard is managed by the worldwide *Wittur Production System*: a structured process incorporating *Concern Rooms* to handle feedbacks, *Safety Corners* to focus our employees on safety and *Functional Excellence Management (FEM) Boards* to publish production trends and engage all members of the Wittur team in the accomplishment of quality, production and safety targets.

Landing and car doors for goods elevators

PEGASUS Industrial

1

Durable and reliable

Reliable and robust structure designed for freight elevators and industrial applications.

2

Design

A range of design solutions and options make Pegasus Industrial the ideal choice in case of freight elevator: reinforcement and "ad hoc" components assures the most safe solution for industrial applications.



3 Wide range of doors

Wittur Pegasus Industrial is available in a wide range of door types to fulfill any installation requirement, with a wide range of fire certifications, vandal resistant executions, glass vision panels.

4 Powerful and energy efficient

The strong SUPRA brushless door drive, according to VDI 4707-2, can move heavy weight panels with low energy consumption per cycle.



Landing and car doors for goods elevators

PEGASUS Industrial

Product range

Pos.	Landing doors		Car doors		C.O. mm		C.H. mm	
	Type	Illustration	Type	Illustration	Min.	Max.	Min.	Max.
Door with operator above	01/C		02/C		1000	1800	2000	2700*
	11/R		12/R		1000	1800		
	11/L		12/L		1000	1800		
	31/R		32/R		1000	2100		
	31/L		32/L		1000	2100		
	41/C		42/C		1400	3200		
	61/C		62/C		1800	3200		

* (max. 2800 for car doors)

Door Type	Sill Track Pack without Cover Plate (mm)
01 - 02	180
11 - 12	210
31 - 32	302
41 - 42	210
61 - 62	302

Door Type	Sill Track Pack with Cover Plate (mm)
01 - 02	180
11 - 12	270
31 - 32	362
41 - 42	270
61 - 62	362

Certifications

BASIC DIRECTIVES AND NORMS:

- EN 81-1 + A3:2009
- EN 81-2 + A3:2009
- EN 81-20/50:2014
- European Lift Directive
- TP TC 011/2011
- GB 7588

FIRE AND ANTIVANDAL CERTIFICATIONS:

- EN 81-58
- BS 476-22
- EN 81-71

	Certification		Pegasus Industrial	
			CO (mm)	CH (mm)
Europe	EN 81-58 E 120'			
	T01		1000-1800	2000-2700
	T11		1000-1800	2000-2700
	T31		1000-2100	2000-2700
	T41		1400-3200	2000-2700
	T61		1800-3200	2000-2700
	EN 81-58 EW 60'			
	T01		1000-1800	2000-2700
	T11		1000-1800	2000-2700
	T31		1000-2100	2000-2700
	T41		1400-3200	2000-2700
	T61		1800-3200	2000-2700
	EN 81-58 EI 60 EI 120'			
	T01		1000-1800	2000-2700
	T11		1000-1800	2000-2700
	T31		1000-2100	2000-2700
	T41		1400-3200	2000-2700
	T61		1800-3200	2000-2700

	Certification		Pegasus Industrial	
			CO (mm)	CH (mm)
UK	BS 476-22 RE 120'			
	T01		1000-1800	2000-2300
	T11		1000-1800	2000-2300
	T31		1000-1800	2000-2300
	T41		1400-3200	2000-2700
	T61		1800-3200	2000-2700
Cat. 1*	EN 81-71			
	T01/02		1000-1400	2000-2600
	T11/12		1000-1400	2000-2600
	T31/32		1000-2100	2000-2600
	T41/42		1400-2800	2000-2600
	T61/62		1800-2800	2000-2600
Cat. 2*	EN 81-71			
	T01/02		1000-1800	2000-2600
	T11/12		1000-1800	2000-2600

* for other dimensions and configurations please refer to Wittur.

NOTICE: for other countries please refer to your local Wittur contact.

PEGASUS Industrial

Landing door features

Landing door	Standard	Option
Reinforced rollers	✓	
Reinforced guide rails	✓	
Reinforcements for forklift application on panels		✓
Reinforcements for forklift application on frames		✓
Emergency key on panel	✓	
Twin brackets	✓	
Reinforced aluminium sill	✓	
Sill with drainage holes	✓	
Iron / Stainless steel sill		✓
Lock rollers on bearings	✓	
Heated sill		✓
Vision panel		✓
Anti-scratch painting	✓	
Reclosing system	Counterweight	

Car door features

Car door	Standard	Option
Supra drive	✓	
Reinforced rollers	✓	
Reinforced guide rails	✓	
Reinforcements for forklift application on panels		✓
Top car fixation	✓	
Reinforced fixation		✓
Car door lock	✓	
Reinforced aluminium sill	✓	
Sill with drainage holes	✓	
Iron / Stainless steel sill		✓
Heated sill		✓
Vision panel		✓
Anti-scratch painting	✓	
Rush hours		✓
Safety edge	WSE* Plus 155	WSE* Plus 81

* WSE = Wittur electronic Safety Edge

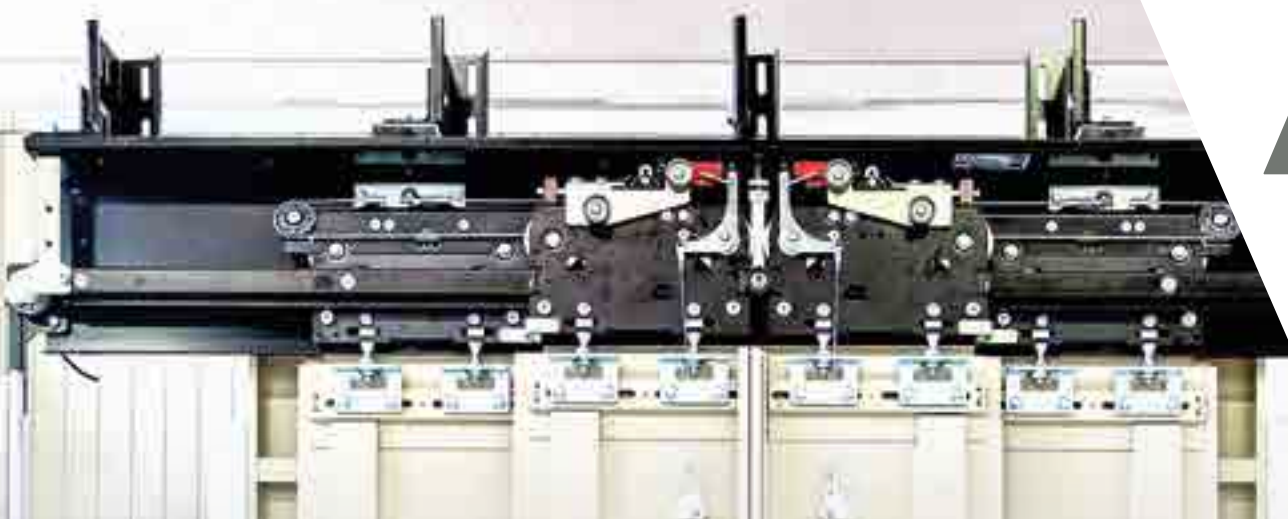


PEGASUS Industrial

Drive and finishes

DRIVE	Supra
Controller	VVVF Converter
Operating temperature range (shaft room temp.)	-20°C/+50°C
Operating temperature range (storage temp.)	-45°C/+70°C
Advanced opening	always available as standard execution
Self learning	always available as standard execution
Adjustment by PC	always available as standard execution
Supervision function	always available as standard execution
Data stored permanently	always available as standard execution
Nudging	always available as standard execution
Protective device	24V DC+10%/150mA
Emergency battery drive	18-26 VDC/max 15A
Average consumption	170W
Max consumption	900W
Power supply	(127V ; 6A) +/-20% (230V ; 4A) +/-20% 50/60Hz
Electromagnetic compatibility	immunity and emission protection acc. EN 12015/16
Energy certificate VDI 4707-2	always available as standard execution



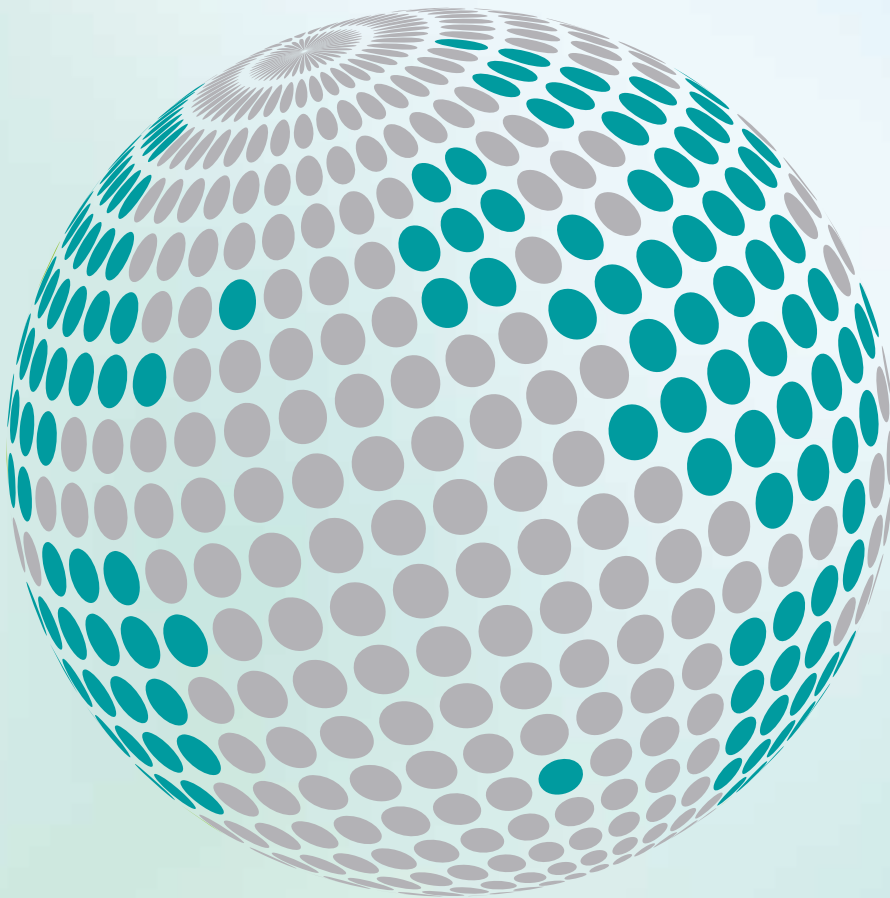


FINISHES	Standard execution	Option
Prime finish RAL 7032 painted	always available as standard execution	-
RAL painted	-	G14 table
Stainless Steel AISI 304 Brushed	-	available as option
Stainless Steel AISI 304 Scotch Brite	-	available as option
Stainless Steel AISI 304 Linen	-	available as option
Stainless Steel AISI 304 Leather	-	available as option
Other Cladding on demand	-	available as option





YOUR GLOBAL PARTNER FOR COMPONENTS,
MODULES AND SYSTEMS IN THE ELEVATOR INDUSTRY



safety **in** *motion*™

www.wittur.com

More information
about Wittur Group
available on-line.

