

# MARINE

EXECUTION FOR LIFT DOORS ON SHIPS



safety **in** motion™

PRODUCT RANGE - STANDARD <sup>(1)</sup>

Model	TB min-max (mm)	TH min-max (mm)
K-S 2R/L	500 - 1800	2000 - 3000
K-S 3R/L	700 - 1800	2000 - 3000
K-S 2Z	500 - 1800	2000 - 3000
K-S 4Z	700 - 3000	2000 - 3000
K-S 6Z	1000 - 3000	2000 - 3000

PRODUCT RANGE - FULL AND FRAMED GLASS <sup>(1)</sup>

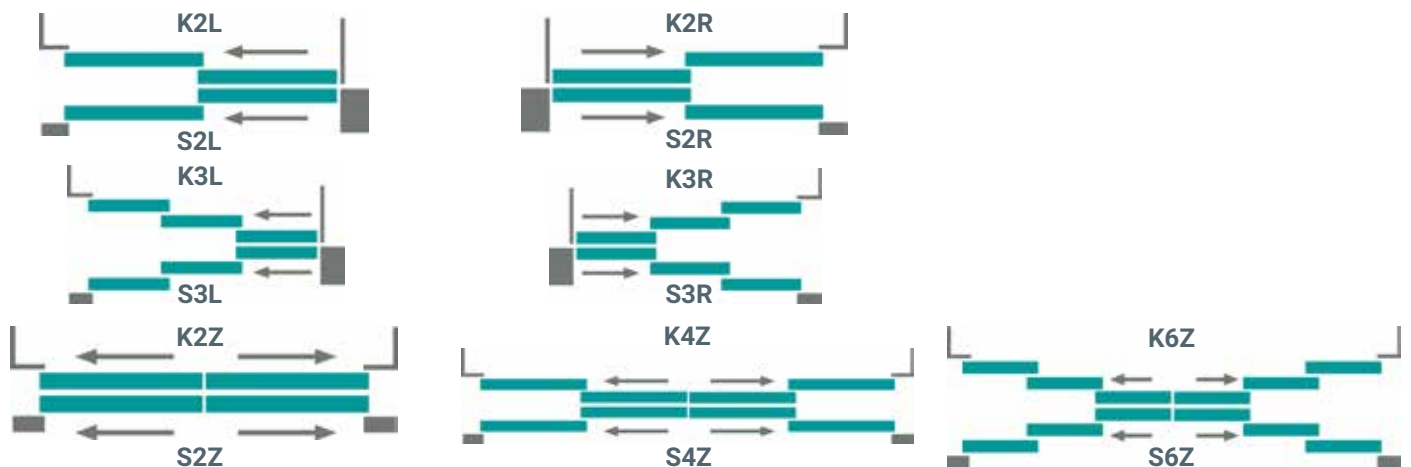
Model	TB min-max (mm)	TH min-max (mm)
K-S 2R/L	500 - 1800	2000 - 3000
K-S 3R/L	700 - 1800	2000 - 3000
K-S 2Z	500 - 1800	2000 - 3000
K-S 4Z	700 - 3000	2000 - 3000
K-S 6Z	1000 - 3000	2000 - 3000

PRODUCT RANGE - FIRE RATED <sup>(1)</sup> - A0 and A 60 CLASS <sup>(2)</sup>

Model	TB x TH min (mm)	TB x TH max (mm)
K-S 2Z	500 x 1900	1200 x 2000

<sup>(1)</sup> 2000 B<sup>(2)</sup> Marine Equipment with complying with the European Marine Directive 96/98/CE in conjunction with 2002/75/EC.

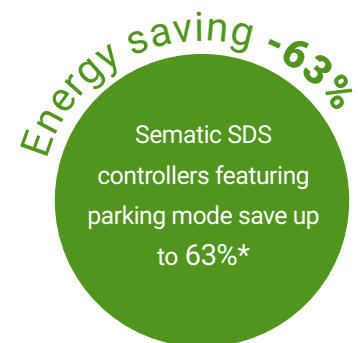
## DOOR OPENING TYPES



## SEMATIC FOR ENERGY SAVING

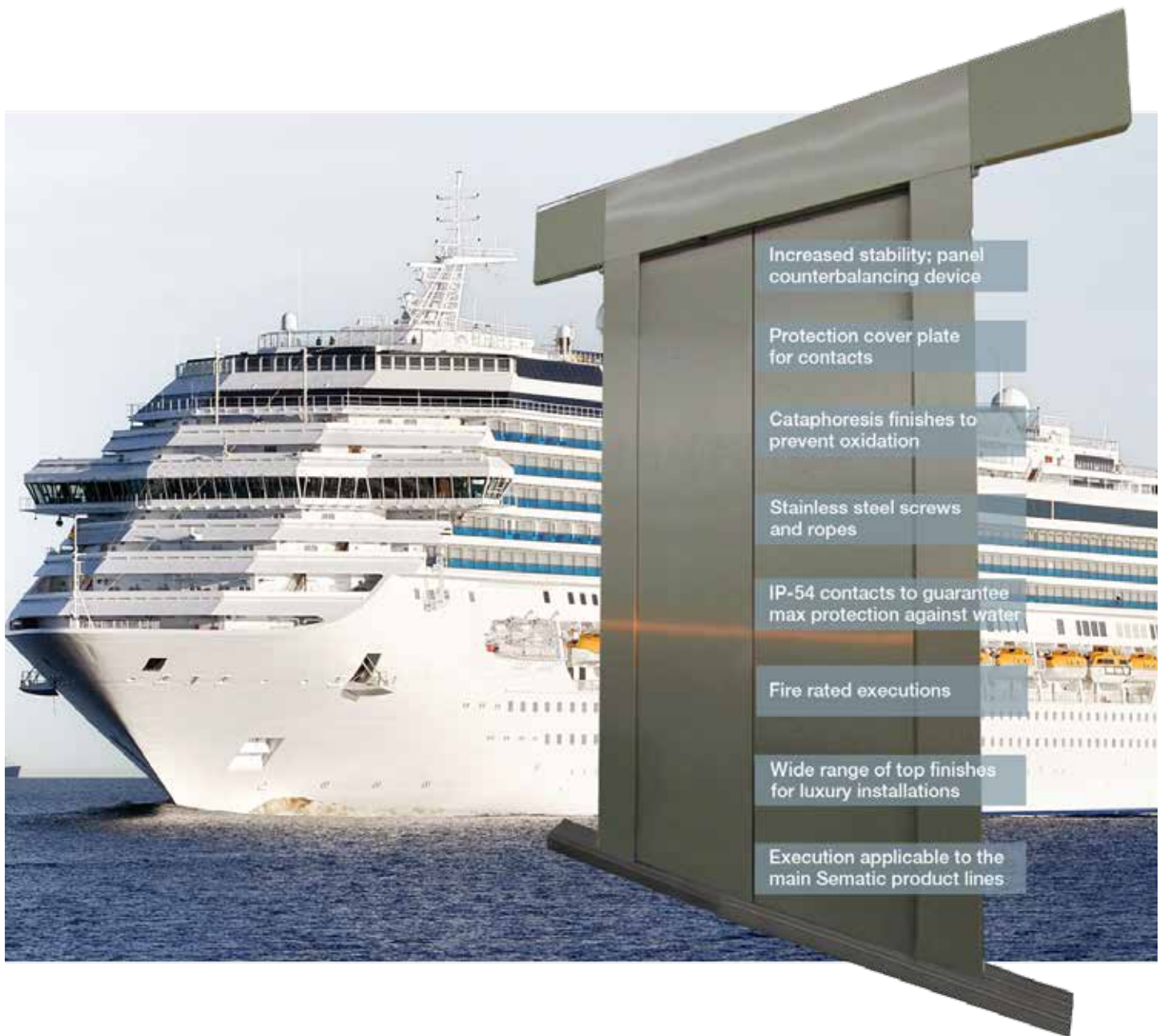
At Sematic, we take our energy use seriously. We have developed a set of technological devices that allow our elevator components to use as little energy as possible, such as our **Sematic SDS door controller**.

\* Door power consumption difference between normal standby mode and parking mode measured in laboratory



## CABIN SUGGESTED FOR THIS DOOR

> CUSTOM



## Working under pitching and rolling conditions

This is a special execution that can be applied to our main product lines, in central opening door executions, making them working under special conditions.

Tens of years of experience in this field allowed Sematic to be on the most beautiful cruise ships with these products, as a sign of satisfaction and reliability.

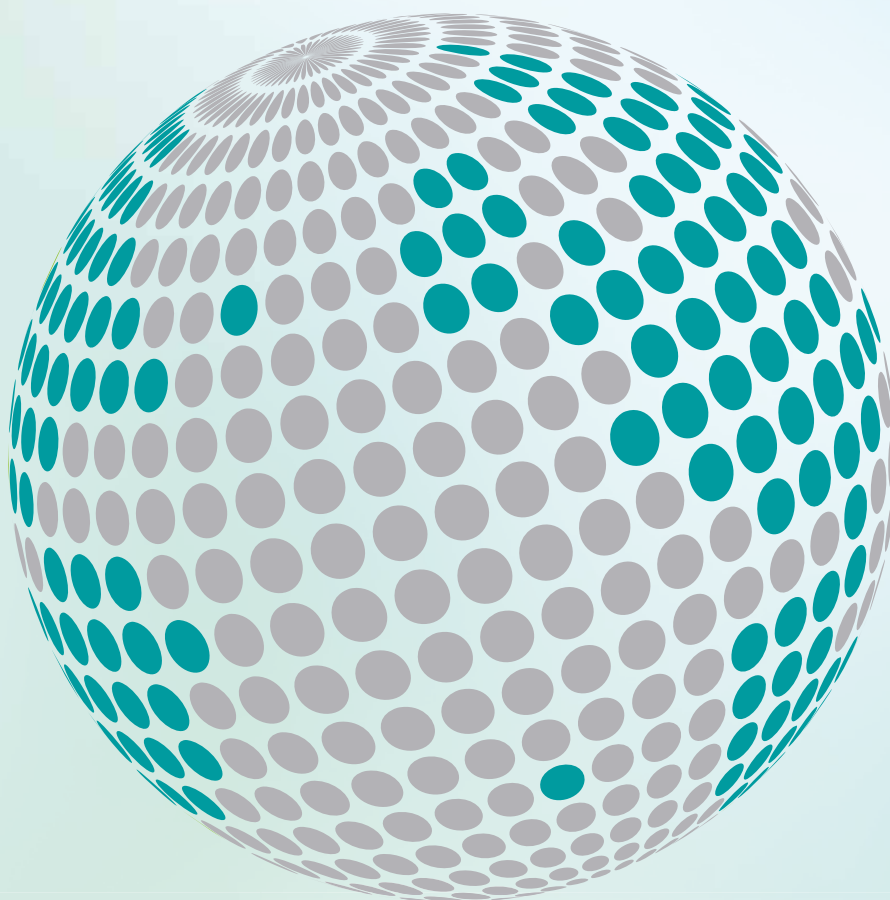
Being installed in prestigious environments, these doors feature all the best finishes: steel, stainless steel, framed

and frameless glass and RAL paintings are possible, making them easy to integrate into each project.

Sematic lift doors featuring marine execution are designed and endurance tested to guarantee high performance also in extreme working environments including saline atmosphere, dust, adverse weather conditions, high humidity and falling water.



**YOUR GLOBAL PARTNER FOR COMPONENTS,  
MODULES AND SYSTEMS IN THE ELEVATOR INDUSTRY**



*safety* **in** *motion*™

[www.wittur.com](http://www.wittur.com)

More information  
about Wittur Group  
available on-line.



**SELCON®**  
a WITTUR brand

**Liftmaterial**  
a WITTUR brand

**sematic®**  
a WITTUR brand