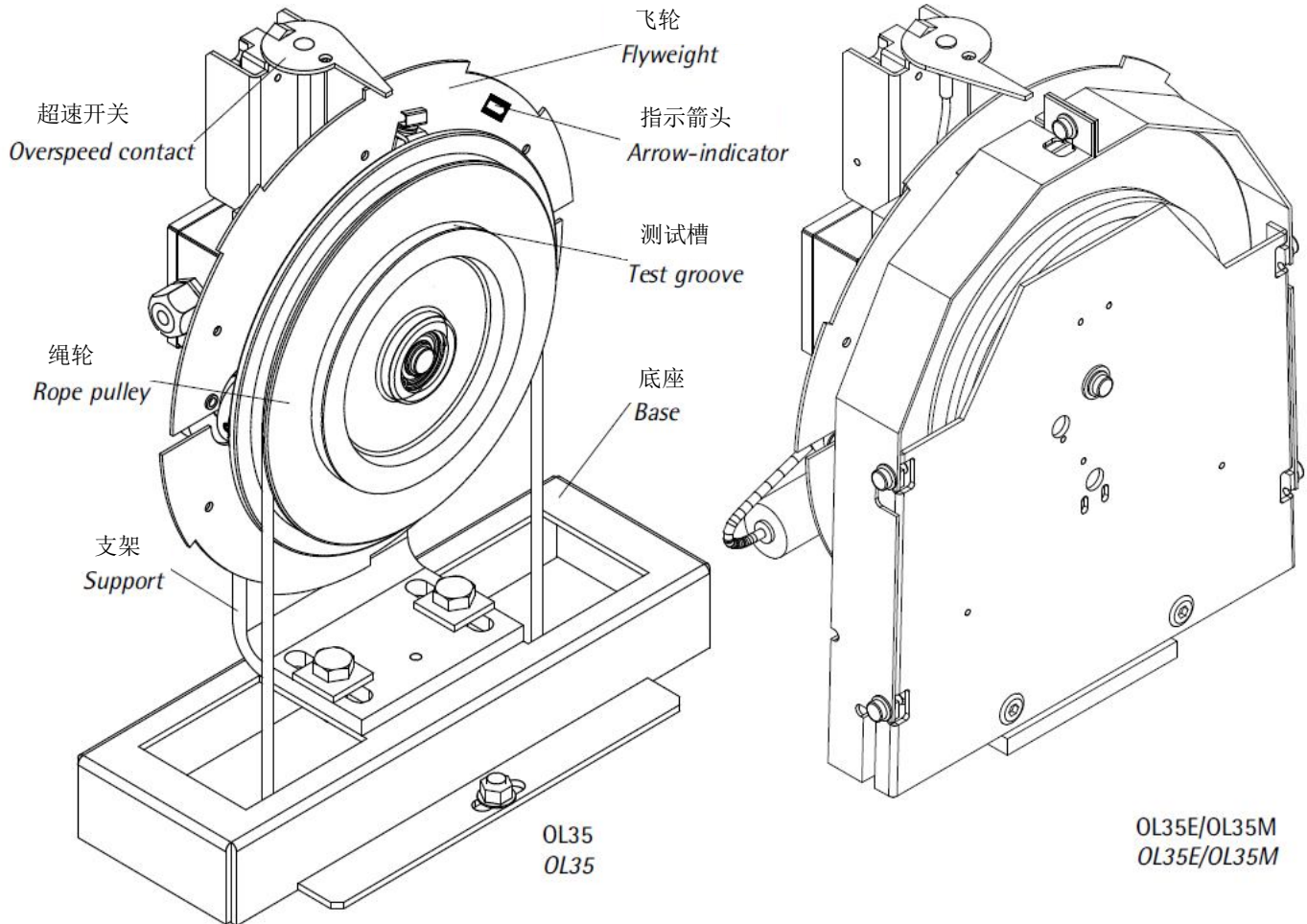


限速器 OVERSPEED GOVERNOR

WCN OL35 / OL35E / OL35M 型
TYPE OL35 / OL35E / OL35M OF WCN

页号/sheet TC.7.004073.ZH.1
日期/date 02.11.2016
版本/version -
审批/approved WAT/KST

1 描述 Description



OL35 / OL35E / OL35M 型限速器是一种可在轿厢超过最大额定速度时动作的安全部件。

The Overspeed governor type OL35 / OL35E / OL35M is a safety component which is activated when the maximum rated speed of the car is passed.

OL35 / OL35E / OL35M 具有双向电气保护开关和单向机械动作功能。

The OL35 / OL35E / OL35M has a bi-directional electrical protection and a single-directional mechanical release.

当电梯超过额定速度达到一定的预定值时，限速器会在下行方向制停电梯，必要时会触发安全钳动作。

When the lift exceeds its nominal speed about a predetermined value, the overspeed governor causes the lift to stop and in down direction, if necessary, also causes the safety gear to be applied.



限速器 OVERSPEED GOVERNOR

页号/sheet TC.7.004073.ZH.2
日期/date 02.11.2016
版本/version -
审批/approved WAT/KST

WCN OL35 / OL35E / OL35M 型
TYPE OL35 / OL35E / OL35M OF WCN

2 使用范围 Range of use

2.1 认证 Approval

OL35 / OL35E / OL35M 经认证符合下列标准:

- Directive 2014/33/EU (Elevators) (欧盟)
- EN81-1 / EN81-2 / EN81-20 / EN81-50 (欧盟)
- GB 7588 (中国)

OL35, OL35E and OL35M have been approved in accordance with the following standards:

- Directive 2014/33/EU (Elevators) (EU)
- EN81-1 / EN81-2 / EN81-20 (EU)
- GB 7588 (China)

2.2 运行参数 Operation data

型号 (900540) Type (900540)		OL35	OL35E	OL35M
推荐行程高度 Travel height (recommendation)	最小值/min. 最大值/max. TH	-- 80m	-- 165m	40m 165m
限速器和张紧装置之间的最大距离 Max.distance between overspeed governor and tension weight		85m	170m	170m
额定速度 Rated speed	d = 6.0 NS	1.0, 1.5, 1.6, 1.75, 2.0, 2.5m/s	1.6, 1.75, 2.0, 2.5, 3.0m/s	1.5, 1.6, 1.75, 2.0, 2.5, 3.0m/s
	d = 8.0 NS	--	1.0, 1.6, 2.0, 2.5, 3.0m/s	--
限速器的最小制动力 Brake force of the governor	最小值/min. 最大值/max.	>500N <1000N	>800N <1300N	>1100N <1600N
张紧装置的张紧力 Tension force of the tension weight	最小值/min. 最大值/max.	250N 350N	600N 800N	600N 800N
绳轮直径 Rope pulley diameter	DB(d=6mm) DB(d=8mm)	200 /203 mm 262mm		200 mm
限速器重量/Weight of OL		max. 25kg	max. 25kg	max. 25kg
钢丝绳直径/Rope diameter	d	6.0mm	6.0/8.0mm	6.0mm
钢丝绳 (DIN EN12385-1/5) steel wire rope (DIN EN12385-1/5)		麻芯或全钢芯 fiber core/full steel		全钢芯 full steel
建议型号/Suggested type		6x19 或/or 8x19		6x19
钢丝绳等级/ Rope quality	最小值/min. 最大值/max.	1570 N/mm ² 1770 N/mm ²	1770 N/mm ² 1960 N/mm ²	1770 N/mm ² 1960 N/mm ²
工作温度/Operating temperature			-5°C... +55°C	
储存温度/Storage temperature			-40°C... +70°C	
空气湿度/Air humidity			<98 % / 40°C	
防护等级/Protection classification			IP2x	

限速器

OVERSPEED GOVERNOR

WCN OL35 / OL35E / OL35M 型
TYPE OL35 / OL35E / OL35M OF WCN

页号/sheet

TC.7.004073.ZH.3

日期/date

02.11.2016

版本/version

-

审批/approved

WAT/KST

2.3 类型概述

Type general view

钢丝绳直径 Rope diam. [mm]	额定速度 Normal speed NS [m/s]	GB7588/ EN81-1 应用 Application	EN81-20 应用 (OL35M) Application	电气速度 Contact speed CS [m/s]	机械速度 Tripping speed TS [m/s]
d = 6.0 (DB = 200) d = 8.0 (DB = 262)	1.00	C	C/CWT	1.15	1.30
	1.00	CWT	-	1.26	1.43
	1.50	C	C/CWT	1.73	1.88
	1.50	CWT	-	1.90	2.06
	1.60	C	C/CWT	1.84	2.00
	1.60	CWT	-	2.02	2.20
	1.75	C	C/CWT	2.01	2.19
	1.75	CWT	-	2.21	2.41
	2.00	C	C/CWT	2.30	2.50
	2.00	CWT	-	2.53	2.75
	2.50	C	C/CWT	2.88	3.13
	2.50	CWT	-	3.16	3.44
	3.00	C	C/CWT	3.45	3.75
	3.00	CWT	-	3.79	4.13



另有其他可选额定速度（相关计算参照3.2.2.4节）

Also optional values for the nominal speed are possible (for calculation see sheet 3.2.2.4)

应用

Application

C 轿厢侧
Car frame

CWT 配重侧
Counter weight



限速器 OVERSPEED GOVERNOR

WCN OL35 / OL35E / OL35M 型
TYPE OL35 / OL35E / OL35M OF WCN

一般公式 General formulas

对于3.2.2.2节中未给出的额定速度，可用下列公式来调节电气动作速度及机械速度。如需表格未给出的额定速度，请联系我们。

If the nominal speed is not given on sheet 3.2.2.2, the formulas below are valid for the adjusted contact and tripping speed. Please contact us, if non- indicated NS is needed.

轿厢侧/car frame	对重侧/counter weight
CS $\geq 1.15 \times NS$	
CS $\leq 1.40 \times NS$; NS $< 0.5m/s$ CS $\leq 1.30 \times NS$; NS $\leq 1.25m/s$ CS $\leq 1.25 \times NS$; NS $> 1.25m/s$	EN81-1: CS = 1,1 x CS (Car) EN81-20: CS = CS (Car)
TS = 1.40 x NS; NS $< 0.5m/s$ TS = 1.30 x NS; NS $\leq 1.25m/s$ TS = 1.25 x NS; NS $> 1.25m/s$	EN81-1: TS = 1,1 x TS (Car) EN81-20: TS = TS (Car)

如需要计算值以外的电气动作速度或机械制动速度，请与我们联系。

调节公差 Adjustment tolerances

CS $\leq 0.99 \times TS$
TS -5% / +0%
TS 机械速度 Tripping speed
NS 额定速度 Nominal speed
CS 电气速度 Contact speed

2.4 运行速度 Tripping speeds

限速器的基本功能是检测超速：

- 电气制停电梯主机（限速器配有超速电气开关）
- 机械触发安全钳

The basic functions of the overspeed governor are to detect overspeed:

- *to stop the elevator drive electrically (the overspeed governor is equipped with overspeed contact)*
- *to activate the safety gear mechanically*

寿命：

- 最多可转250次，对于每次测试最多可进行15次制动。如果一次测试的连续制动次数超过了10次，必须将制动冷却至少30分钟。

Lifetime:

- *max. 250 turns with max. 15 turns per test, if more than 10 turns per test, the governor (brake) must cool off for 30 minutes minimum*

OL35E和OL35M型用的是热处理硬化过的绳轮

A hardened pulley is used for the types OL35E and OL35M.

限速器

OVERSPEED GOVERNOR

WCN OL35 / OL35E / OL35M 型
TYPE OL35 / OL35E / OL35M OF WCN

页号/sheet

TC.7.004073.ZH.5

日期/date

02.11.2016

版本/version

-

审批/approved

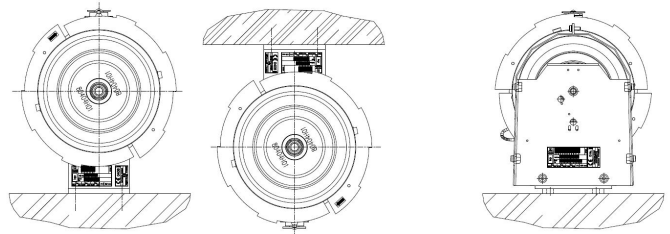
WAT/KST

Fixing methode: OL35

OL35E/OL35M



OL35可正立或倒挂，
OL35E/M只能正立固定。
OL35 can be fixed standing or hanging,
OL35E/OL35M can be fixed only standing.



产品环境

- 限速器最大允许的作用力

	OL35	OL35E	OL35M
张紧重	800N	800N	800N
钢丝绳重	618N	1000N	600N
制动力	1000N	1300N	1600N

- 张紧（包括安全开关、自动复位型）

OL35	可选配垂直式或摆臂式
OL35E/OL35M	可选配垂直式或摆臂式

- 钢丝绳
限速器是由专门为此功能设计的钢丝绳驱动。钢丝绳的直径、结构和材质请见下表。

钢丝绳最小破断力 min. breaking load of rope	OL35	OL35E	OL35M
d = 6	16.5kN	21.0kN	23.3kN
d = 8	29.5kN	33.2kN	

（根据DIN EN 12385-4）

- 限速器的绳索应易于从安全钳上拆卸。

Product environment

- Max. allowed forces applied to the governor

	OL35	OL35E	OL35M
Tension weight	800N	800N	800N
Rope weight force	618N	1000N	600N
Brake force	1000N	1300N	1600N

- Tension weight (including safety switch, automatic reset type):
OL35 vertically guided/swing arm
OL35E/OL35M vertically guided/swing arm

- Rope:
The Overspeed governor shall be driven by a steel wire rope designed for that purpose. Rope diameter, construction and quality, see chapter 2.2 (table).

- The overspeed governor rope shall be easily detachable from the safety gear.

限速器

OVERSPEED GOVERNOR

WCN OL35 / OL35E / OL35M 型
TYPE OL35 / OL35E / OL35M OF WCN

页号/sheet TC.7.004073.ZH.6
日期/date 02.11.2016
版本/version -
审批/approved WAT/KST

3 应用和装配

Project engineering and assembly

3.1 尺寸

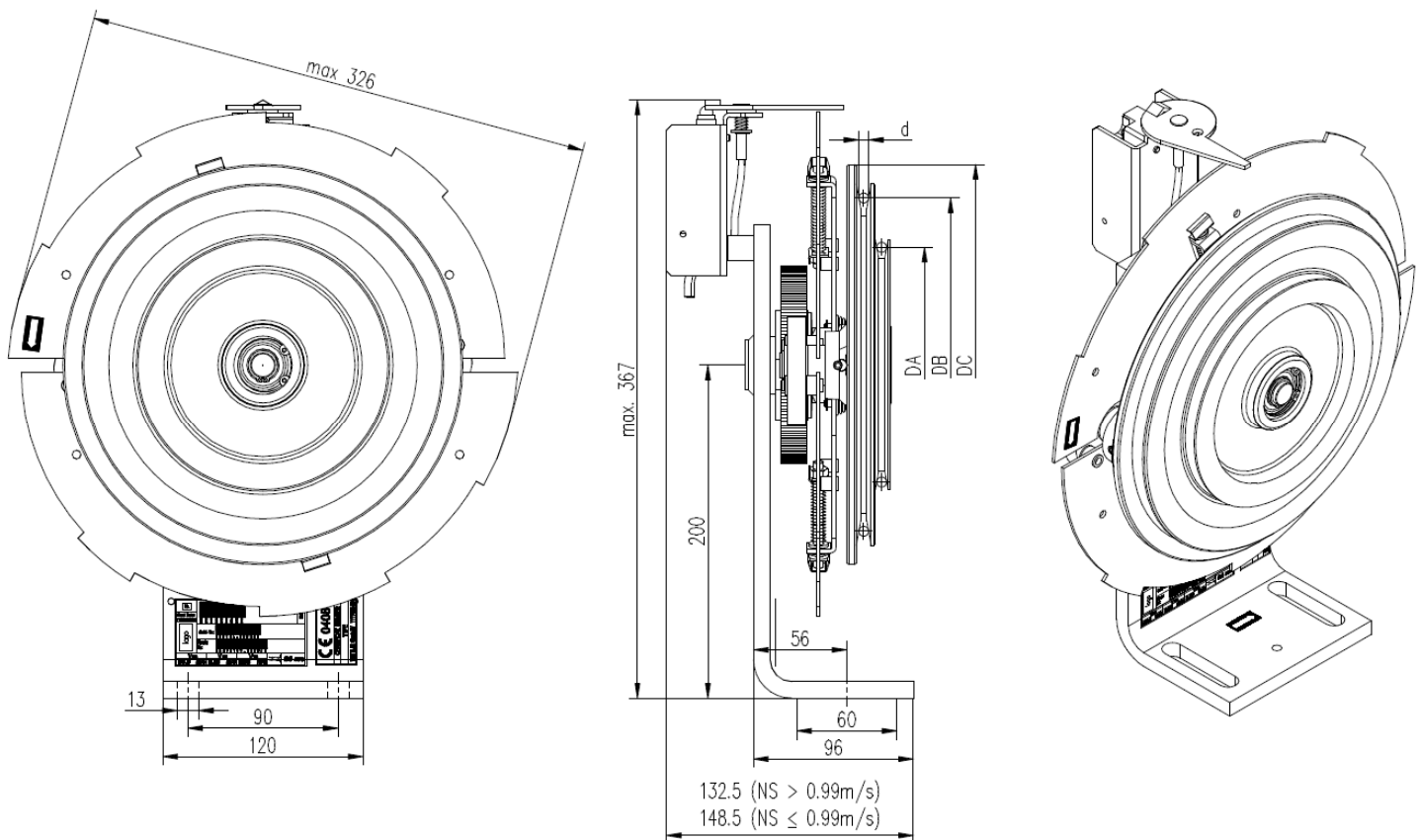
Dimensions

d	DA [mm]	DB [mm]	DC [mm]
6	141	200	240
8	188	262	267

d 绳索直径 *diameter of the rope*
DA 试验槽的标称直径 *Nominal diameter of the test groove*
DB 限速器绳槽的标称直径 *Nominal diameter of the drive groove for the governor rope*
DC 滑轮外径 *Outside diameter of the pulley*

3.1.1 OL35 钢丝绳直径 6 mm & 8 mm

OL35 Rope Diameter 6 mm & 8 mm



限速器

OVERSPEED GOVERNOR

WCN OL35 / OL35E / OL35M 型
TYPE OL35 / OL35E / OL35M OF WCN

页号/sheet

TC.7.004073.ZH.7

日期/date

02.11.2016

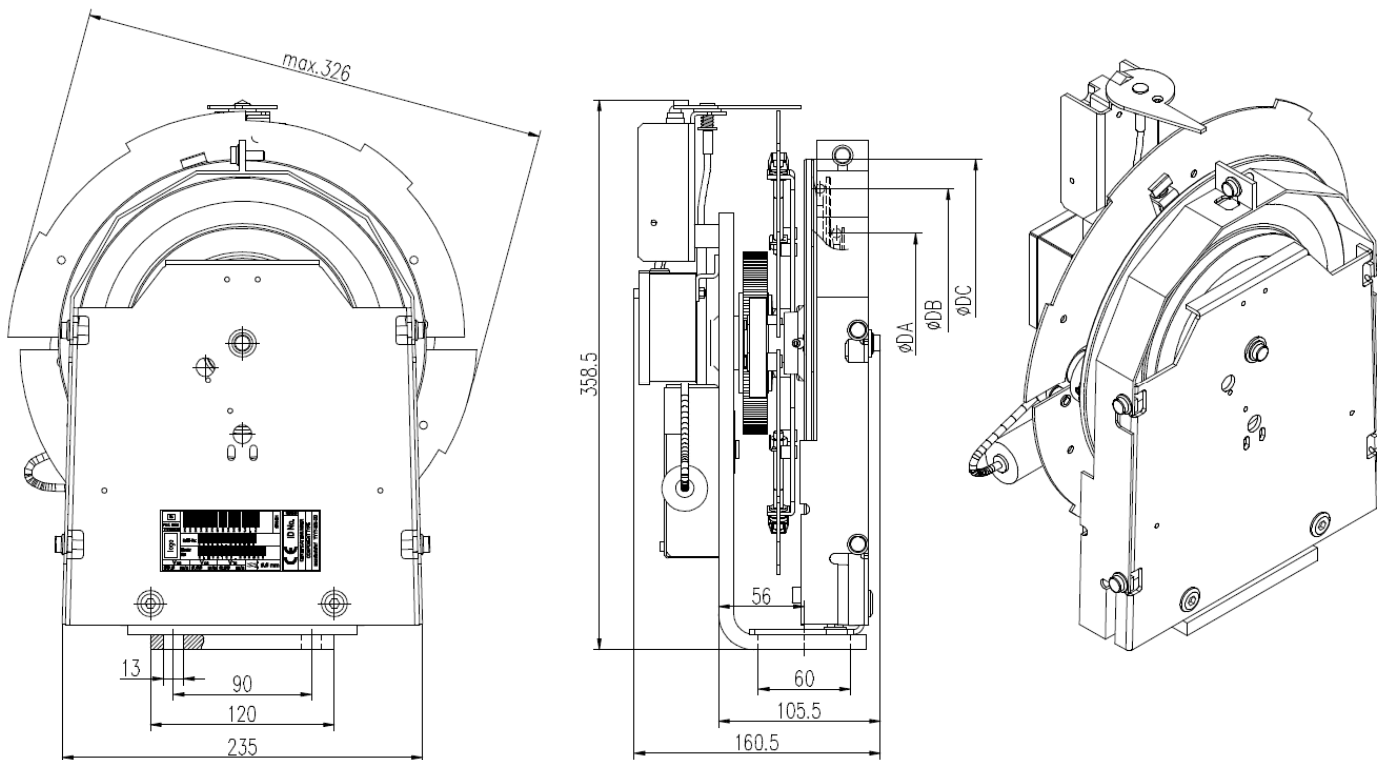
版本/version

-

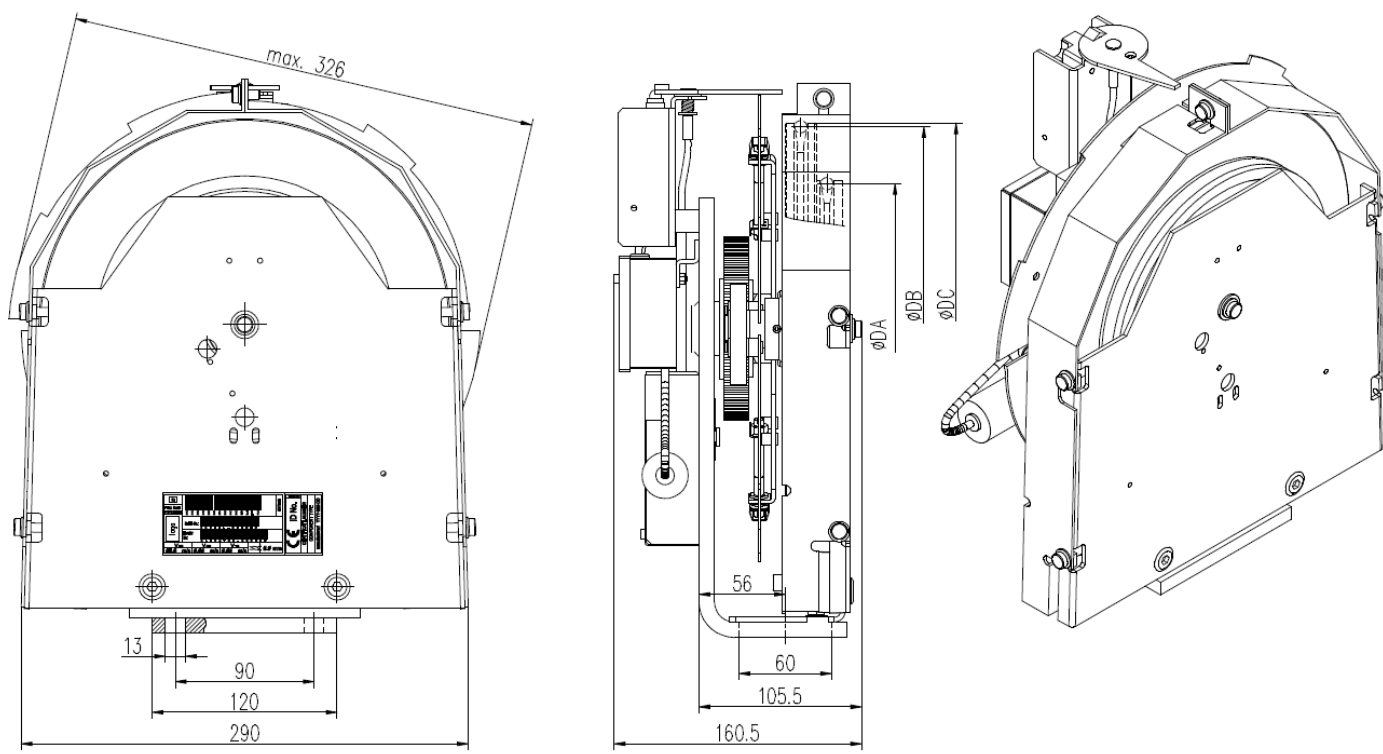
审批/approved

WAT/KST

3.1.2 OL35E 钢丝绳直径 6 mm OL35E Rope Diameter 6 mm



3.1.3 OL35E 钢丝绳直径 8 mm OL35E Rope Diameter 8 mm



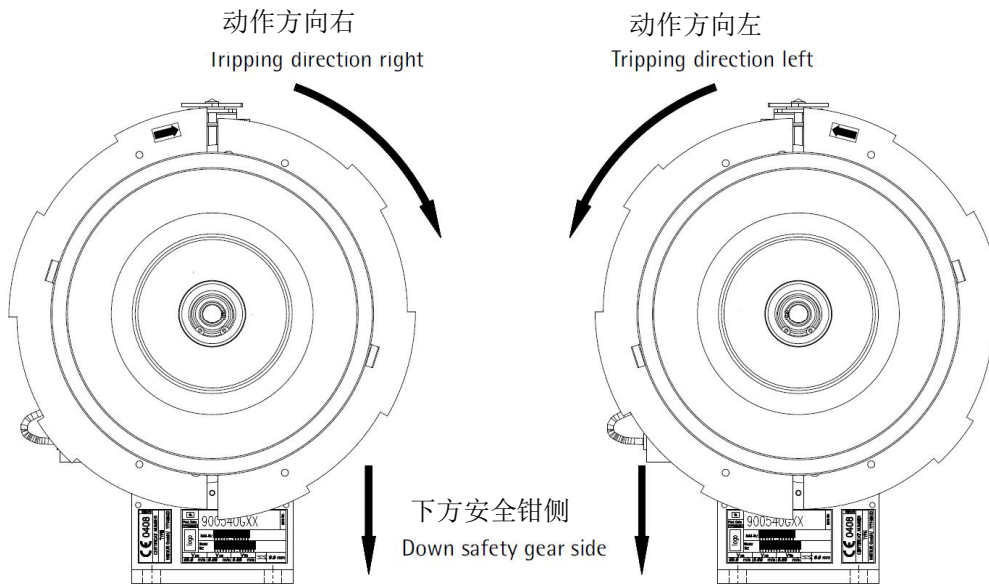
限速器 OVERSPEED GOVERNOR

WCN OL35 / OL35E / OL35M 型
TYPE OL35 / OL35E / OL35M OF WCN

页号/sheet TC.7.004073.ZH.8
日期/date 02.11.2016
版本/version -
审批/approved WAT/KST

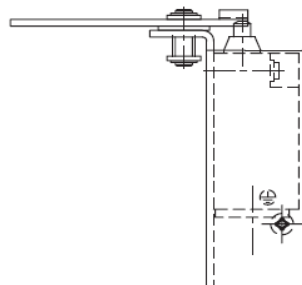
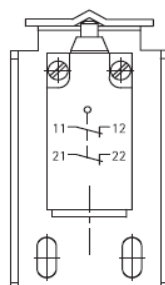
3.2 额外信息 Additional information

- 动作方向
飞轮片上的箭头指示表面动作方向。
- 测试槽
测试槽用来测试限速器的电气速度。不允许用来测试制动力。
- Tripping direction
The arrow-indicator on the flyweight shows the tripping direction.
- Test groove
The groove is for the testing of the contact speed of the overspeed contact. Testing the brake force is not allowed with the test groove.



3.3 超速开关 Overspeed contact

- | | | | |
|---------|-------------------------------------|---------------------------|---------------------------------------|
| - 使用范围: | AC15, B300,
U_e/I_e 240V(1.5A) | - use category: | AC 15, B300,
U_e/I_e 240V (1.5A) |
| - 热电流: | $I_{the} = 5A$ | - thermal current: | $I_{the} = 5A$ |
| - 绝缘电压: | $U_i = 400V$ AC | - insulation voltage: | $U_i = 400V$ AC |
| - 防护等级: | IP43 | - protection type: | IP 43 |
| - 符合标准: | VDE 0470
IEC/EN 60947-5-1 | - approved in accordance: | VDE 0470
IEC/EN 60947-5-1 |



限速器 OVERSPEED GOVERNOR

页号/sheet TC.7.004073.ZH.9
日期/date 02.11.2016
版本/version -
审批/approved WAT/KST

WCN OL35 / OL35E / OL35M 型
TYPE OL35 / OL35E / OL35M OF WCN

3.4 安全罩壳 Safety cover

因起到挡绳的功能，限速器的安全罩是强制配备的（对OL35）

The overspeed governor safety cover is obligatory because of the included rope guard function. (valid for OL35)



安全罩壳包含挡绳装置，以防钢丝绳从绳轮上脱落（根据EN81）



The safety cover includes also a rope guard which prevents that the rope falls off the pulley (acc.EN81).



需要根据安全罩壳的型号，预留足够的空间供安全罩壳拆卸用



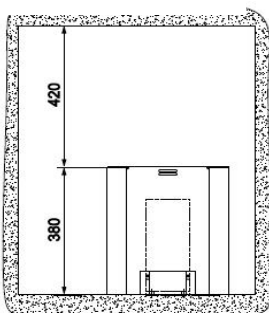
For disassembling the safety cover, additional space requirements, depending on the type of safety cover, must be considered.

对于OL35E/OL35M罩壳是选配的，因为其罩壳不包含挡绳功能。
为了防止运输过程中的损坏及防尘，推荐使用适当型号的安全罩壳。

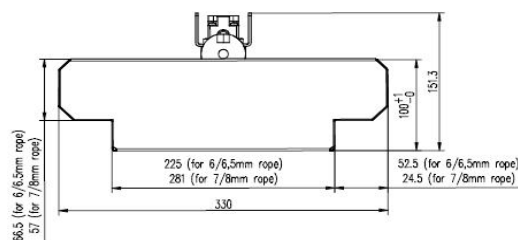
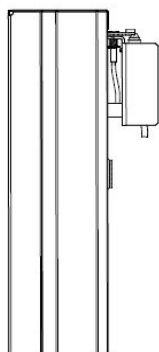
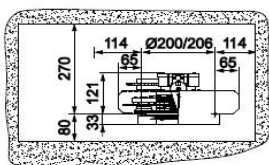
At OL35E/OL35M the usage of a safety cover is optional, because the rope guard function is not included in the safety cover.

To avoid damages in transit and excessive dirt it is recommended to use also a safety cover at this type.

3.4.1 OL35 86137 型 Type 86137 OL35



Order Code:
86137



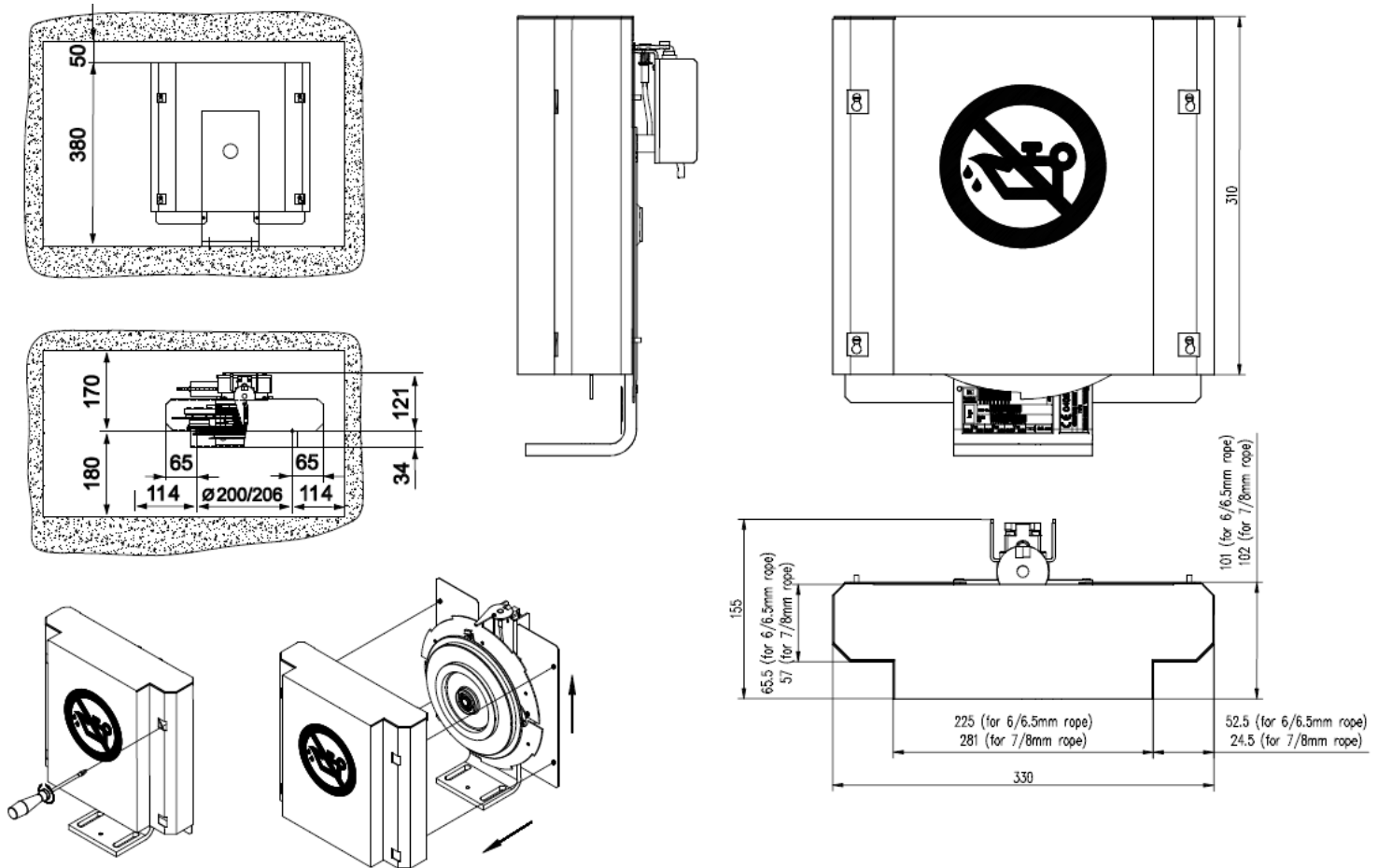
Order Code:
86137H

该罩壳仅适用于有机房使用（EN81-20）

This safety cover is only allowed if the overspeed governor is placed in the machine room (EN81-20).

产品随时更新，恕不另行通知！

3.4.2 OL35 604110 型



这个型号的罩壳适用于限速器顶部空间不足以装配顶置式罩壳的情况下使用。
这种罩壳仅适用于有机房使用（EN81-20）

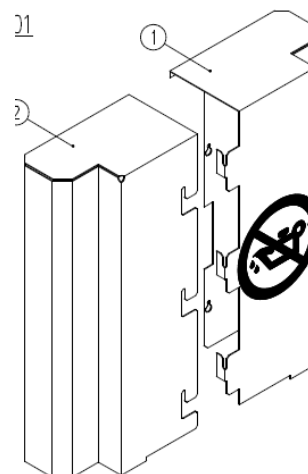
*This safety cover is used when the space above the governor don't allow the use of the top removable safety covers.
This cover is only allowed for MR use (with EN81-20).*

3.4.3 OL35 903310 型 *Type 903310 OL35*

这个型号的罩壳适用于限速器顶部空间不足以装配顶置式罩壳的情况下使用。
这种罩壳仅适用于有机房使用（EN81-20）

This safety cover is used when the space above the governor don't allow the use of the top removable safety covers.

This cover is only allowed for MR use (with EN81-20).

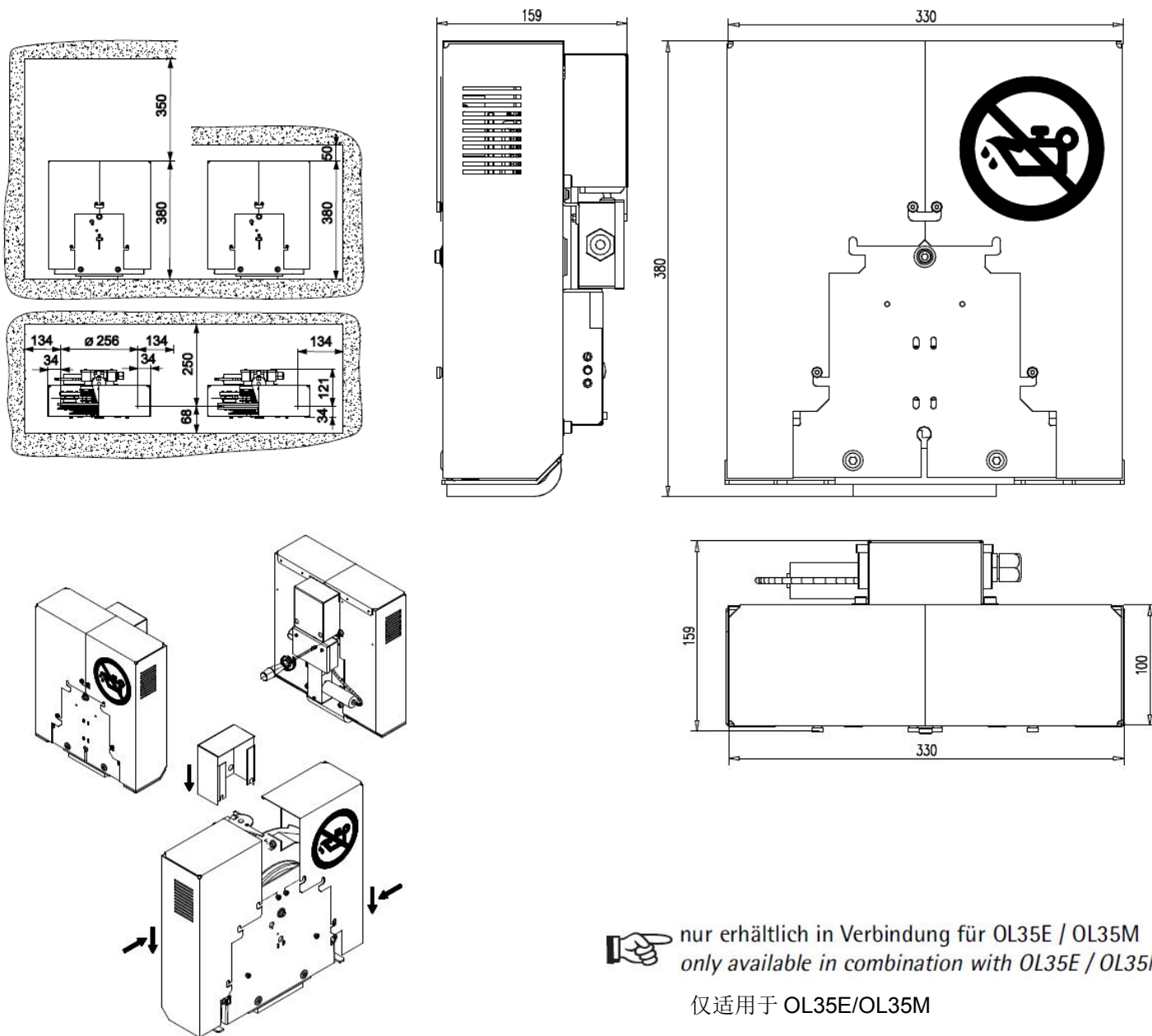


限速器 OVERSPEED GOVERNOR

WCN OL35 / OL35E / OL35M 型
TYPE OL35 / OL35E / OL35M OF WCN

页号/sheet TC.7.004073.ZH.11
日期/date 02.11.2016
版本/version -
审批/approved WAT/KST

3.4.4 OL35E/OL35M 903318 型 Type 903318 OL35E/OL35M



该款罩壳只能从后部拆卸。

This safety cover can only be removed from the back side.

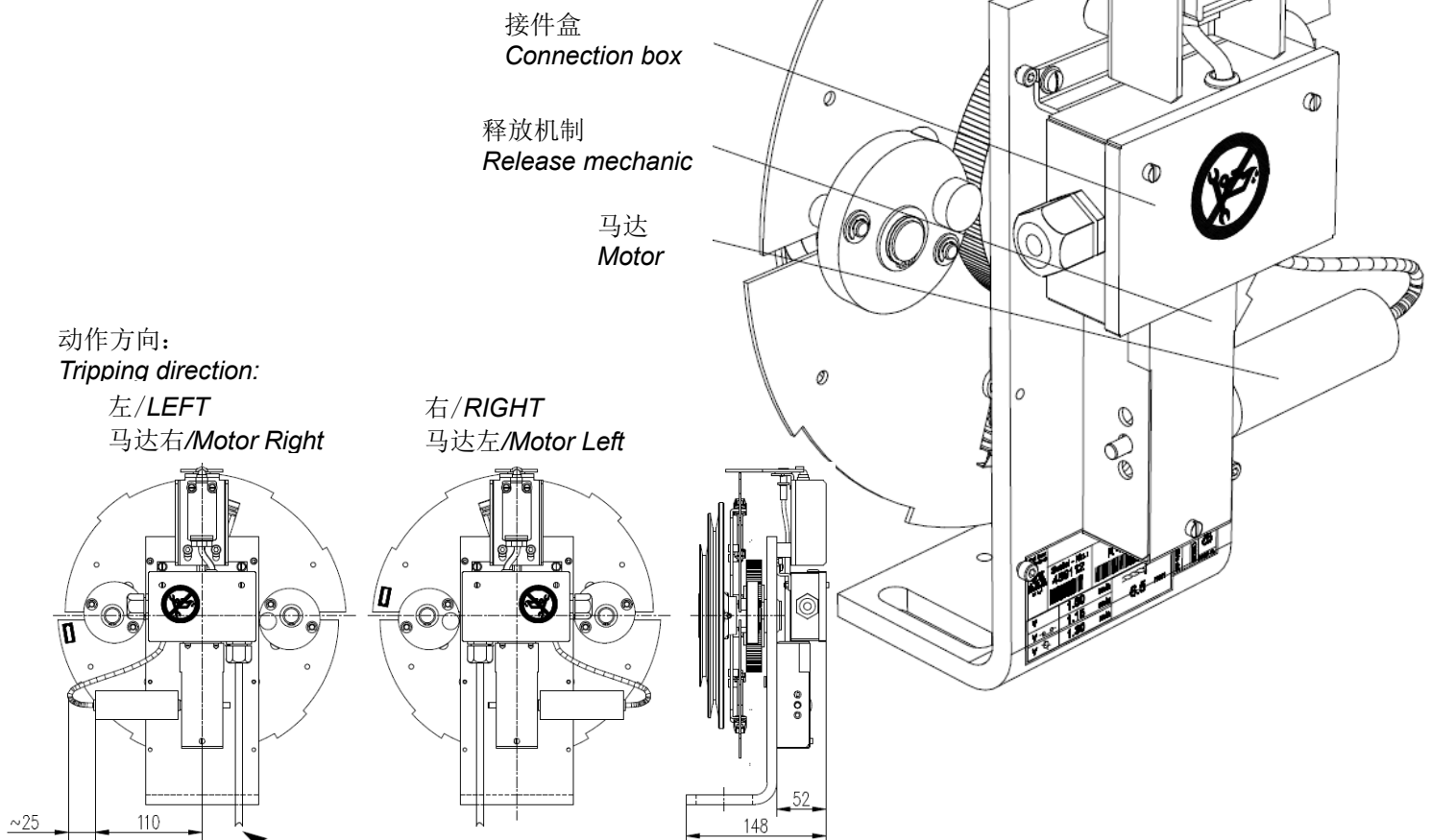
限速器 OVERSPEED GOVERNOR

WCN OL35 / OL35E / OL35M 型
TYPE OL35 / OL35E / OL35M OF WCN

页号/sheet TC.7.004073.ZH.12
日期/date 02.11.2016
版本/version -
审批/approved WAT/KST

4. 附件 Accessories

4.1 OL35 / OL35E / OL35M 的远程控制 Remote Control Type OL35 / OL35E / OL35M



一般来说远程控制装置的作用是:

- 测试限速器 (和安全钳配合使用)
- 通过触发限速器和安全钳在达到动作速度之前制停电梯
- 在制动之后复位限速器的安全开关

远程控制装置是在生产商处安装及调试的。



如果选用了远程控制装置, 则不能订购手动制动装置 (根据GB7588)

产品随时更新, 恕不另行通知!

The general purposes of the remote control are:

- Testing of overspeed governor (apply of safety gear)
- Stopping of elevator below tripping speed by operating the overspeed governor and the safety gear
- to reset the overspeed governor safety switch after tripping

The remote control is fixed and adjusted at manufacturer.



If the remote control is ordered, you can't order the manual test tripping device. (acc.EN81).



限速器

OVERSPEED GOVERNOR

WCN OL35 / OL35E / OL35M 型
TYPE OL35 / OL35E / OL35M OF WCN

页号/sheet TC.7.004073.ZH.13
日期/date 02.11.2016
版本/version -
审批/approved WAT/KST

操作

由远程控制装置来触发限速器或复位安全钳。

过载保护

远程控制装置有过载保护功能（接件盒内有PTC自恢复保险丝）

- 过载保护相应时间：最短：5秒
最长：30秒
- 过载保护恢复时间：最短：120秒

Operation

The remote control makes the overspeed governor trip or reset the safety switch.

Overload protection

The remote control is equipped with an overload protection(PTC in the connection box).

- response time for overload protection: min.: 5 sec
max.: 30 sec
- recovery time for overload protection: min.: 120 sec

4.1.1 运行数据

Operating data

产品环境

远程控制装置的供电/ Power supply for remote control	
电压/ Voltage	24VDC +10/-15%
电流/ Current	0.9 – 1.5A
导通时间/ Switch-on time	最短/min.: 2 sec.
	最长/max.: 30 sec.

限速器

OVERSPEED GOVERNOR

WCN OL35 / OL35E / OL35M 型
TYPE OL35 / OL35E / OL35M OF WCN

页号/sheet

TC.7.004073.ZH.14

日期/date

02.11.2016

版本/version

-

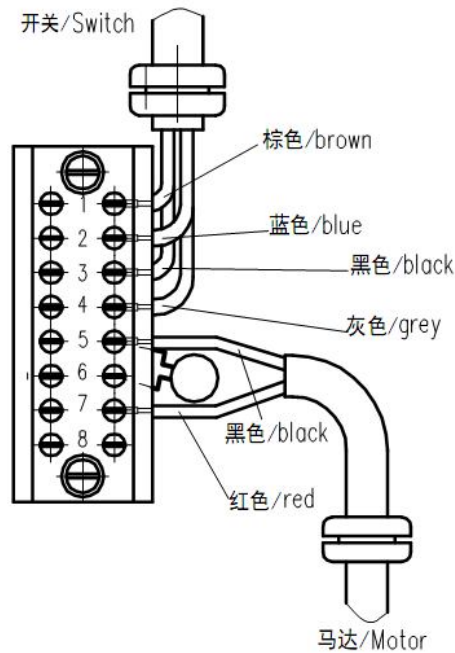
审批/approved

WAT/KST

4.2 安全回路接线

Safety circuit connection

用于连接控制板和远程控制/安全开关
for Connection from control panel to remote
control/safety switch



远程控制接线端子/ Remote control terminals	
No.	接线/ Connection
1	限速器安全电路开关 No.2
2	Safety switch contact (OSG) No.2
3	限速器安全电路开关 No.1
4	Safety switch contact (OSG) No.1
5	空接 Not connected
6	触发制动/trips: +24 VDC 复位/reset : GND
7	触发制动/trips: GND 复位/reset : +24 VDC
8	空接 Not connected

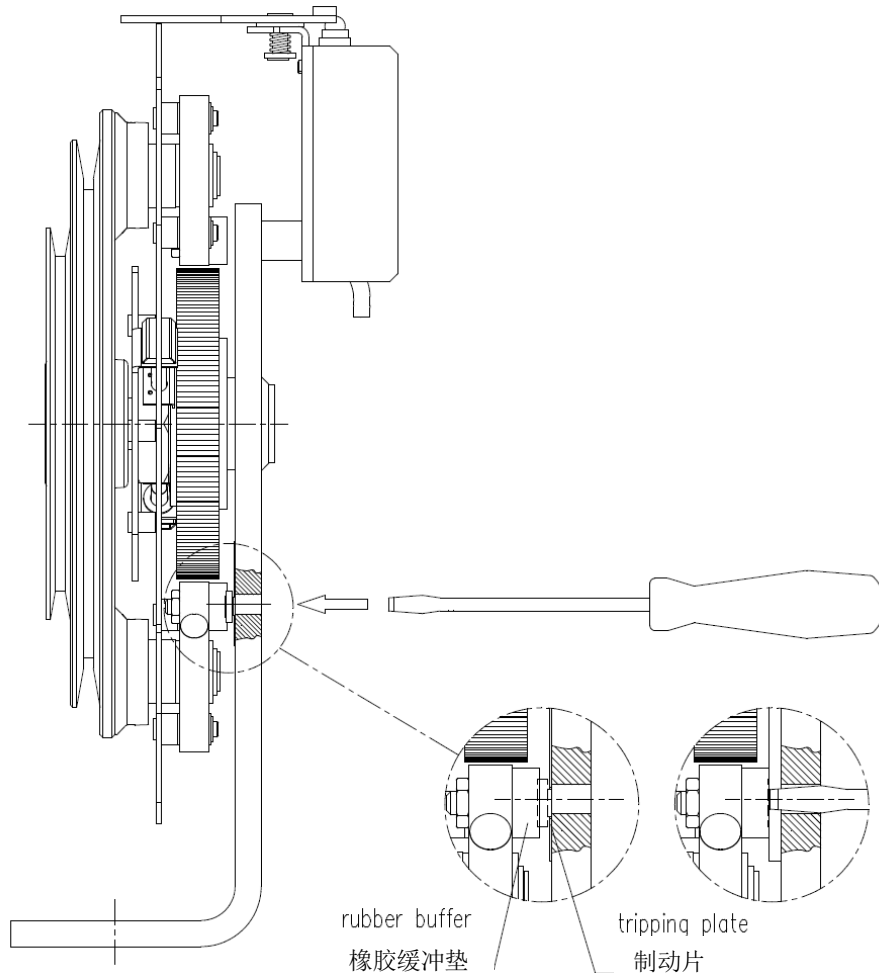
4.3 OL35 手动触发装置

Manual test tripping device type OL35



如果不订购远程控制装置，此项必选

Mandatory if remote control is not ordered.



主要作用:

- 测试限速器（配合安全钳使用）
- 通过操纵限速器和安全钳的动作使电梯在达到制动速度之前制停。

如果订购了手动触发装置，不可订购远程控制装置。

The general purposes of the product are:

- Testing of overspeed governor (Apply of safety gear)
- Stopping of elevator below tripping speed by operating the overspeed governor and the safety gear.

If the manual test tripping device is ordered, you cannot order the remote control.



限速器

OVERSPEED GOVERNOR

WCN OL35 / OL35E / OL35M 型
TYPE OL35 / OL35E / OL35M OF WCN

页号/sheet	TC.7.004073.ZH.16
日期/date	02.11.2016
版本/version	-
审批/approved	WAT/KST

4.4 去噪声选项 *Noiseless option*

OL35E和OL35M型标配去噪声选项。

For OL35E / OL35M a noiseless option is standard.

该选项采用了优化的飞轮片机构-可将运行噪声减至最小。

*The option consists of a modified flyweight mechanism
-which reduce the operating noises to a minimum.*

4.5 热处理硬化绳轮 *hardened pulley*

OL35E和OL35M型标配热处理硬化过的绳轮。

For OL35E / OL35M a hardened pulley is standard.

限速器 OVERSPEED GOVERNOR

页号/sheet

TC.7.004073.ZH.17

日期/date

02.11.2016

版本/version

-

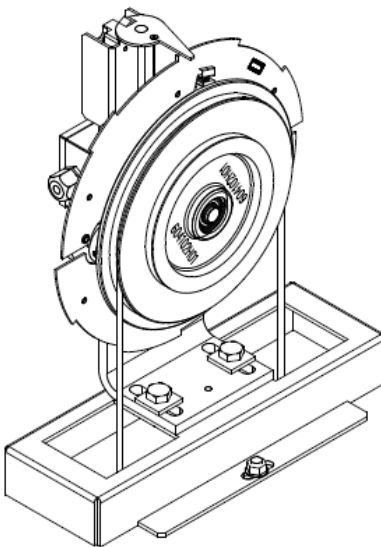
审批/annroved

WAT/KST

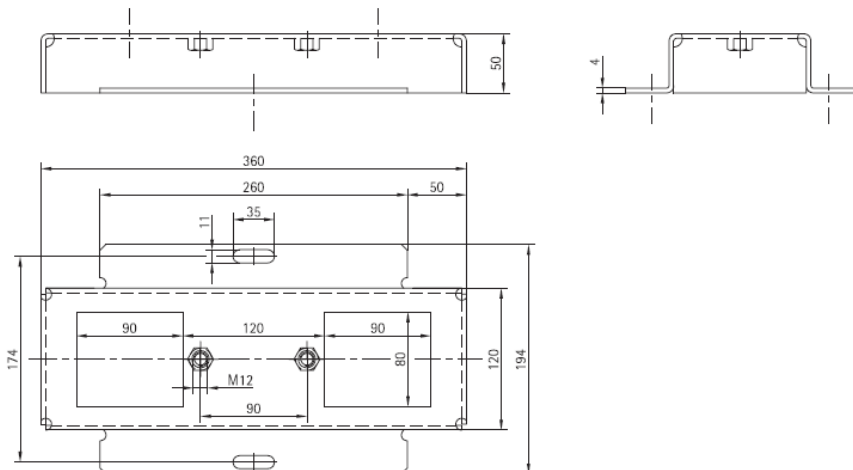
WCN OL35 / OL35E / OL35M 型
TYPE OL35 / OL35E / OL35M OF WCN

4.6 底座 Base

4.6.1 底座 86118G01 Base 86118G01

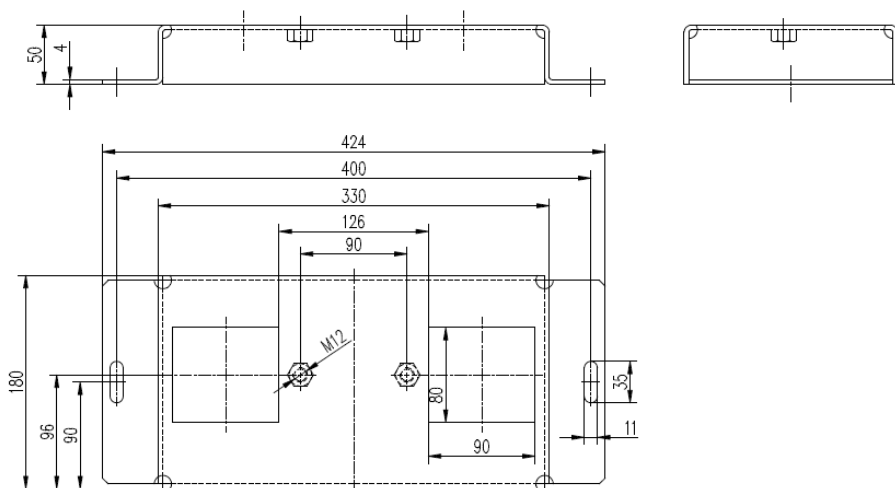


用于水泥的固定材料包括
Fixing material for cement inclusive



4.6.2 底座 97037G01 Base 97037G01

用于水泥的固定材料包括
Fixing material for cement inclusive



限速器 OVERSPEED GOVERNOR

WCN OL35 / OL35E / OL35M 型
TYPE OL35 / OL35E / OL35M OF WCN

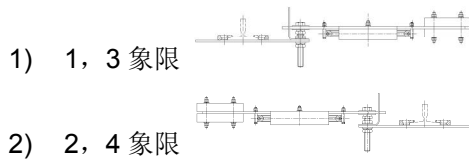
页号/sheet TC.7.004073.ZH.18
日期/date 02.11.2016
版本/version -
审批/approved WAT/KST

4.7 张紧配重 Tension weight

4.7.1 摆臂式张紧 Swingarm tension weight

使用范围

- 该张紧配重符合 EN81 和 GB7588 的要求 (含松绳开关)。这些张紧配重配合 OL35/OL35E/OL35M 型限速器使用。
- 电梯最大速度 2.5m/s (350N) 及 3.0m/s (600N)
- 最大提升高度 80m
- 钢丝绳直径 $d=6\text{mm}$ 或 8mm
- 钢丝绳节圆直径 $D=239\text{mm}$ (8mm 钢丝绳)
 $D=237\text{mm}$ (6mm 钢丝绳)
- 适用导轨 T75, T82, T89/T90, T114, T125/T127 等相关类型
- 提供张紧拉力 350N/600N
- 松绳开关 IP67
- 安装方向, 有 2 种可选:



- 轿厢架或对重上的钢丝绳固定件符合尺寸 AK (钢丝绳中心-导轨中心): 160mm、220mm、250mm、350mm、415mm 可选。AK 具体调节范围见下表:

Range of use

- This tension weight meets the requirements of EN81 (slack rope switch included). These tension weights are performed for the use with overspeed governor OL35/OL35E/OL35M.
- Max elevator speed 2.5m/s(350N) and 3.0m/s(600N)
- Max travel height 80m
- rope diameter $d = 6/8\text{mm}$
- Rope pitch diameter $D=239\text{mm}$ (8mm rope)
 $D=237\text{mm}$ (6mm rope)
- applicable guide rails: T75 T82 T89/T90 T114
T125/T127 appropriate
- Provided tension force 350N/600N
- Slack rope switch IP67
- Installation method, 2 options:
 - 1, 3 quadrant
 - 2, 4 quadrant
- Rope fixings on car frame or counterweight in accordance to dimension AK (distance rope center - guide rail): 160mm, 220mm, 250mm, 350mm and 415mm optional. The adjustable range of AK in below table

导轨型号 Guide rail	AK 可调范围 Adjustable range of AK AK [mm]				
	AK=160	AK=220	AK=250	AK=350	AK=415
T75	148-172	208-232	235-265	335-365	400-430
T82	145-175	205-235	230-270	330-370	395-435
T89/T90	145-175	205-235	225-275	325-375	390-440
T114	x	x	235-265	335-365	400-430
T125/127	x	x	240-260	340-360	405-425

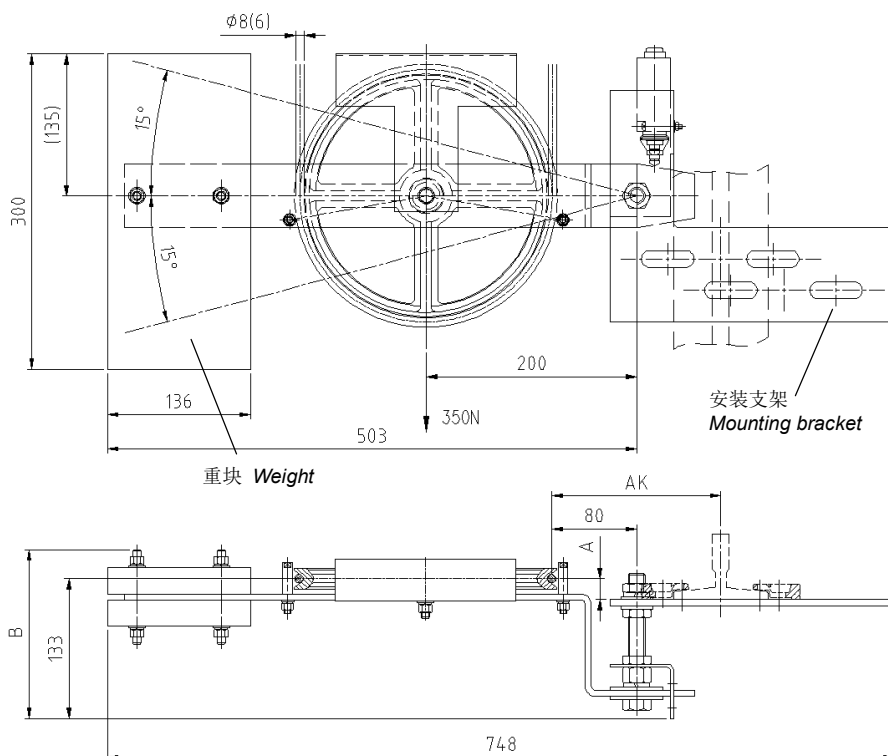
限速器 OVERSPEED GOVERNOR

WCN OL35 / OL35E / OL35M 型
TYPE OL35 / OL35E / OL35M OF WCN

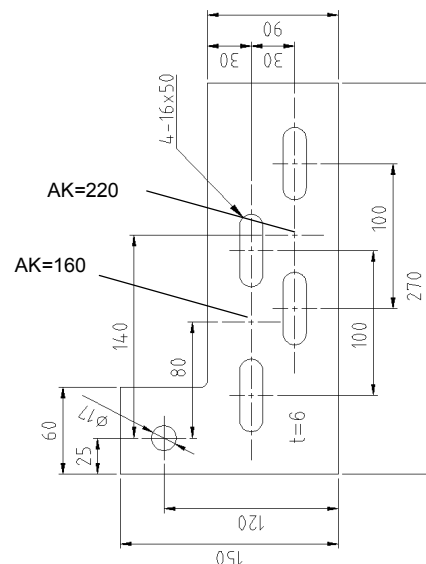
页号/sheet TC.7.004073.ZH.19
日期/date 02.11.2016
版本/version -
审批/approved WAT/KST

4.7.1.1 摆臂式张紧 AK=160/220 Swingarm tension weight AK=160/220

350N张紧 OL35使用:
350N tension weight for OL35:



安装支架 Mounting bracket



2、4 象限版本如图所示 2, 4 quadrant version as drawn
1、3 象限版本为镜像 1, 3 quadrant version is the mirror image

重块类型 <i>Weight type</i>	尺寸 <i>Dimension</i> B [mm]	安全规范 <i>Safety code</i>
铁 <i>Iron</i>	161	GB7588 EN81
复合材料 <i>Composite</i>	191	
注: 图示为符合 GB7588 的张紧重, 符合 EN81 的张紧重与之相比仅安全罩壳不同。 <i>Remark: The tension weight as shown is for GB7588, the EN81 one just has a different safety cover.</i>		

调节范围 Adjustable range A [mm]	张紧重 Tension force FT	提升高度 Travel height HT	额定速度 Rated speed NS	松绳开关 Slack rope switch	钢丝绳直径 Rope diameter d[mm]	绳轮直径 Pulley diameter DC [mm]	允许摆动角度 Allow rotation angle
20-55	350N	≤80m	≤2.5m/s	IP67	Φ6/Φ8	250	-/+15°

供货范围

- 工厂组装和调试好
- 不含与导轨固定的材料

Content of delivery

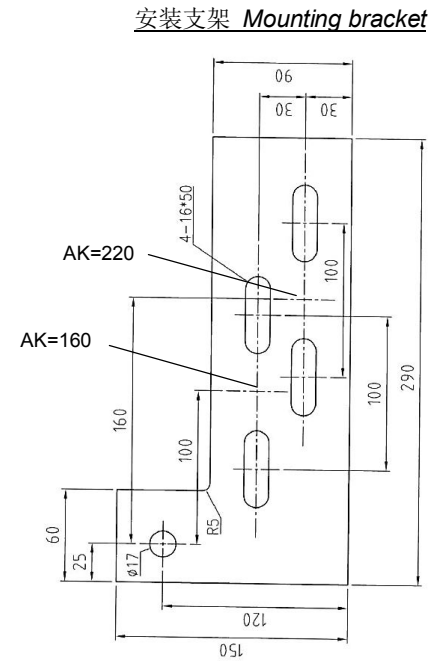
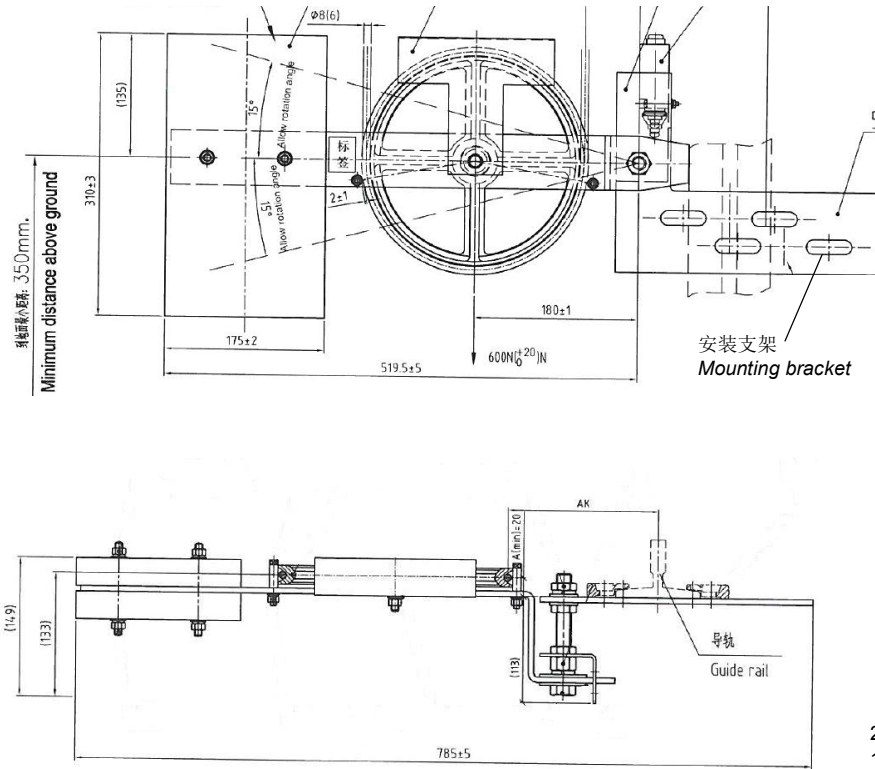
- Assembled and adjusted at the factory
- Excluding materials for fixing to guide rail

限速器 OVERSPEED GOVERNOR

WCN OL35 / OL35E / OL35M 型
TYPE OL35 / OL35E / OL35M OF WCN

600N张紧 OL35E/M使用:
600N tension weight for OL35E/M:

页号/sheet TC.7.004073.ZH.20
日期/date 02.11.2016
版本/version -
审批/approved WAT/KST



2、4 象限版本如图所示 2, 4 quadrant version as drawn
1、3 象限版本为镜像 1, 3 quadrant version is the mirror image

B

重块类型 Weight type	尺寸 Dimension B [mm]	安全规范 Safety code
铁 Iron	149	GB7588
复合材料 Composite	184	EN81

注: 图示为符合 GB7588 的张紧重, 符合 EN81 的张紧重与之相比仅安全罩壳不同。
Remark: The tension weight as shown is for GB7588, the EN81 one just has a different safety cover.

调节范围 Adjustable range A [mm]	张紧重 Tension force FT	提升高度 Travel height HT	额定速度 Rated speed NS	松绳开关 Slack rope switch	钢丝绳直径 Rope diameter d[mm]	绳轮直径 Pulley diameter DC [mm]	允许摆动角度 Allow rotation angle
20-55	600N	≤80m	≤3.0m/s	IP67	Φ6/Φ8	250	-/+15°

供货范围

- 工厂组装和调试好
- 不含与导轨固定的材料

Content of delivery

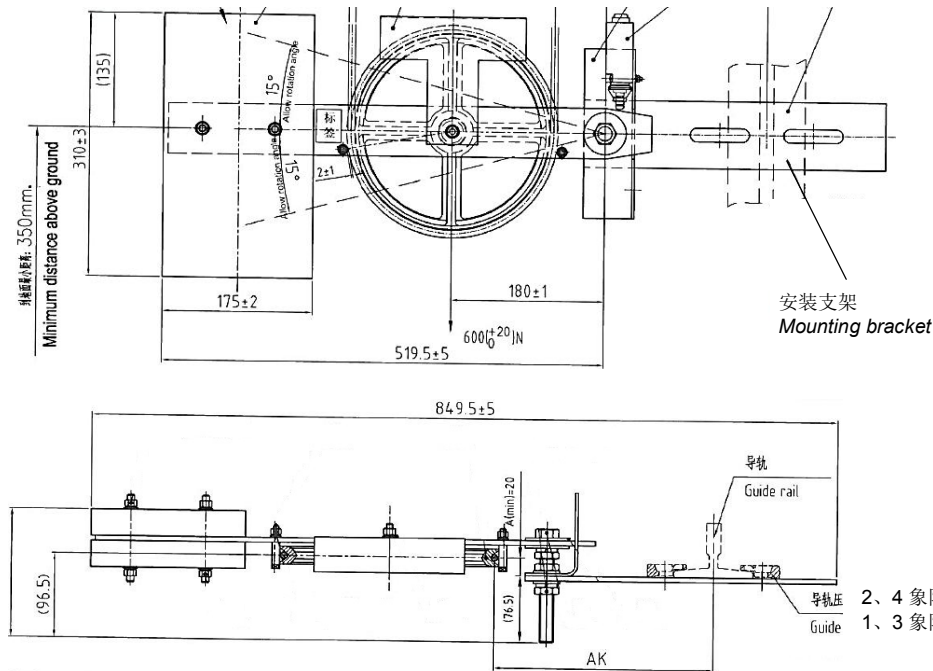
- Assembled and adjusted at the factory
- Excluding materials for fixing to guide rail

限速器 OVERSPEED GOVERNOR

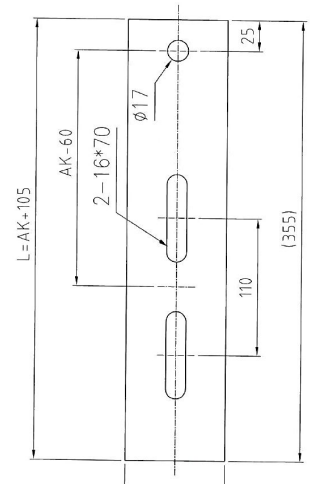
WCN OL35 / OL35E / OL35M 型
TYPE OL35 / OL35E / OL35M OF WCN

页号/sheet TC.7.004073.ZH.22
日期/date 02.11.2016
版本/version -
审批/approved WAT/KST

600N张紧 OL35E/M使用:
600N tension weight for OL35E/M:



安装支架 *Mounting bracket*



2、4 象限版本如图所示 2, 4 quadrant version as drawn
1、3 象限版本为镜像 1, 3 quadrant version is the mirror image

重块类型 Weight type	尺寸 Dimension C [mm]	安全规范 Safety code
铁 Iron	147	GB7588 EN81
复合材料 Composite	182	

注：图示为符合 GB7588 的张紧重，符合 EN81 的张紧重与之相比仅安全罩壳不同。
Remark: The tension weight as shown is for GB7588, the EN81 one just has a different safety cover.

调节范围 Adjustable range A [mm]	张紧重 Tension force FT	提升高度 Travel height HT	额定速度 Rated speed NS	松绳开关 Slack rope switch	钢丝绳直径 Rope diameter d [mm]	绳轮直径 Pulley diameter DC [mm]	允许摆动角度 Allow rotation angle
20-55	600N	≤80m	≤3.0m/s	IP67	Φ6/Φ8	250	-/+15°

供货范围

- 工厂组装和调试好
- 不含与导轨固定的紧固材料

Content of delivery

- Assembled and adjusted at the factory
- Excluding materials for fixing to guide rail



限速器 OVERSPEED GOVERNOR

WCN OL35 / OL35E / OL35M 型
TYPE OL35 / OL35E / OL35M OF WCN

页号/sheet TC.7.004073.ZH.23
日期/date 02.11.2016
版本/version -
审批/approved WAT/KST

4.7.2 垂直式张紧配重 Vertical tension weight

使用范围

- 该张紧配重符合 EN81 的要求（含松绳开关）。这些张紧配重配合 OL35E/OL35M 型限速器使用。
- 电梯最大速度 3.0m/s
- 最大提升高度 165m
- 钢丝绳直径 $d=6\text{mm}$ 或 8mm
- 钢丝绳节圆直径 $D=239\text{mm}$ (8mm 钢丝绳)
 $D=237\text{mm}$ (6mm 钢丝绳)
- 适用导轨 T75, T82, T89/T90, T114, T125/T127 等相关类型
- 提供张紧拉力 600N
- 松绳开关 IP67
- 安装方法, 有 2 种可选:
 - 固定于导轨
 - 固定于地坑
- 轿厢架或对重上的钢丝绳固定件符合尺寸 AK (钢丝绳中心-导轨中心): 160mm、220mm、250mm、350mm、415mm 可选。AK 具体调节范围见下表:

Range of use

- This tension weight meets the requirements of EN81 (slack rope switch included). These tension weights are performed for the use with overspeed governor OL35E/OL35M.
- Max elevator speed 3.0m/s
- Max travel height 165m
- rope diameter $d = 6/8\text{mm}$
- Rope pitch diameter $D=239\text{mm}$ (8mm rope)
 $D=237\text{mm}$ (6mm rope)
- applicable guide rails: T75 T82 T89/T90 T114 T125/T127 appropriate
- Provided tension force 600N
- Slack rope switch IP67
- Installation method, 2 options:
 - Fixing to guide rail
 - Fixing to pit floor

Rope fixings on car frame or counterweight in accordance to dimension AK (distance rope center - guide rail): 160mm, 220mm, 250mm, 350mm, 415mm optional. The adjustable range of AK in below table:

导轨型号 Guide rail	AK 可调范围 Adjustable range of AK AK [mm]				
	AK=160	AK=220	AK=250	AK=350	AK=415
T75	146-175	205-235	235-265	335-365	400-430
T82	140-180	200-240	230-270	330-370	395-435
T89/T90	135-185	195-245	225-275	325-375	390-440
T114	x	x	235-265	335-365	400-430
T125/127	x	x	240-260	340-360	405-425

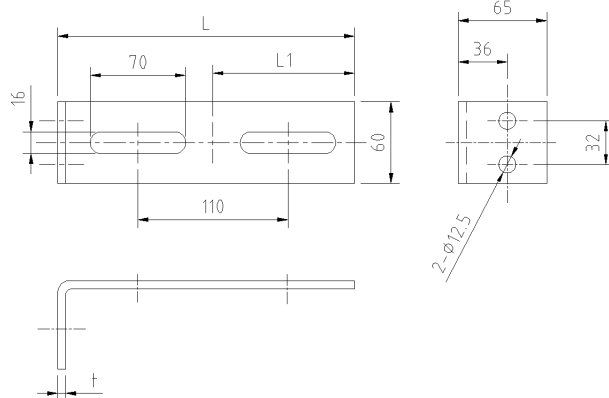
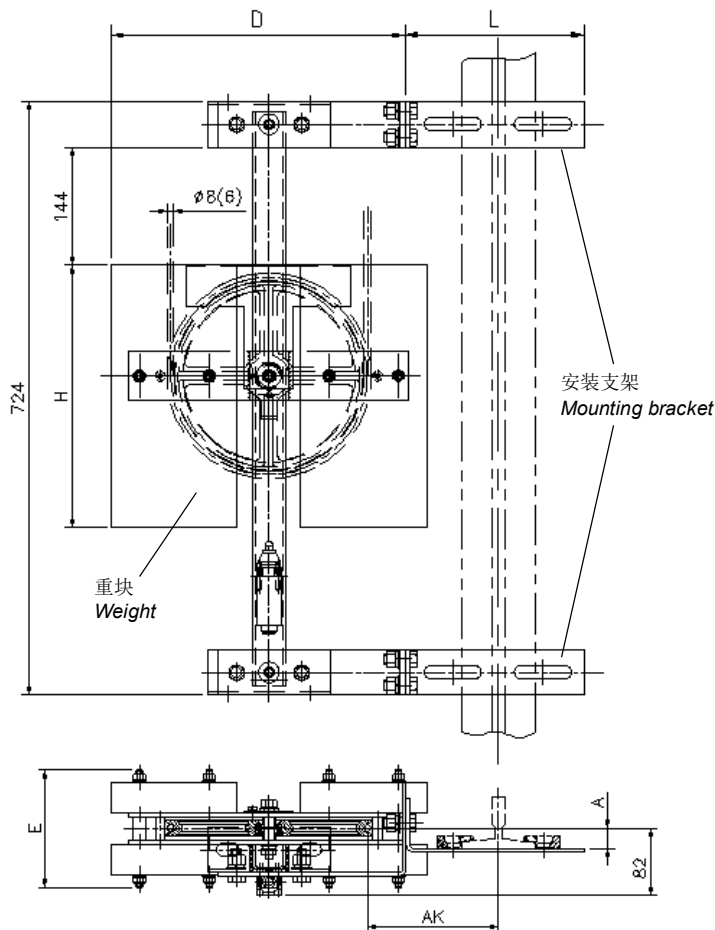
限速器 OVERSPEED GOVERNOR

WCN OL35 / OL35E / OL35M 型
TYPE OL35 / OL35E / OL35M OF WCN

页号/sheet TC.7.004073.ZH.24
日期/date 02.11.2016
版本/version -
审批/approved WAT/KST

4.7.2.1 安装方式 — 固定于导轨 Fixing method — fixing to guide rail

安装支架 Mounting bracket



型号 Type	支架尺寸 Bracket dimensions		
	L [mm]	L 1 [mm]	t [mm]
AK=160	218	104	6
AK=220	278		
AK=250	318	114	8
AK=350	418		
AK=415	483		

供货不含安装支架与导轨固定所需材料
Materials for fixing bracket to guide rail is not included in delivery content

重块类型 Weight type	AK 可选项 Options of AK	尺寸 Dimensions			安全规范 Safety code
		D [mm]	E [mm]	H [mm]	
铁 Iron	160/220/250/350/415	359	152	320	GB7588 EN81
复合材料 Composite	250/350/415	379	216	310	

注：图示为符合 GB7588 的张紧重，符合 EN81 的张紧重与之相比仅安全罩壳不同。
Remark: The tension weight as shown is for GB7588, the EN81 one just has a different safety cover.

调节范围 Adjustable range A [mm]	张紧重 Tension force FT	提升高度 Travel height HT	额定速度 Rated speed NS	松绳开关 Slack rope switch	钢丝绳直径 Rope diameter d[mm]	绳轮直径 Pulley diameter DC [mm]
0-55	600N	≤165m	≤3.0m/s	IP67	Φ6/Φ8	250



限速器

OVERSPEED GOVERNOR

WCN OL35 / OL35E / OL35M 型
TYPE OL35 / OL35E / OL35M OF WCN

页号/sheet TC.7.004073.ZH.26

日期/date 02.11.2016

版本/version -

审批/approved WAT/KST

5 供货范围

Content of supply

- 带试验槽的限速器OL35 / L35E / OL35M在工厂调整为规定的额定速度（动作方向：右或左）
- 安全罩壳（基于EN81）
安全罩壳包含挡绳装置，以防钢丝绳从绳轮上滑落（见3.4节）
- OL35E和OL35M型标配去噪声选项。
- 测试报告
记录测试数据
- 手动触发测试装置（基于EN81）
手动触发OL35时- 限速器安装在机房中且便于检测和维护
- Overspeed governor OL35 / L35E / OL35M with test groove, pre-adjusted in the factory for the defined nominal speed (Tripping direction: right or left)
- Safety cover (acc. EN81)
The safety cover includes also a rope guard which prevents that governor rope falls off the pulley (see chapter 3.4).
- For OL35E / OL35M a noiseless option is standard.
- Test report
Document with the inspection results.
- Manual test tripping device (acc. EN81)
To trip the overspeed governor OL35 manually - the overspeed governor is placed in machine room and accessible for inspection or maintenance.



没有远程控制装置时，手动触发测试装置是必须的



The manual test tripping device is mandatory for the cases where no remote control is required.

5.1 选配项

Options

- 远程控制（基于EN81）
用于测试限速器，可在低于动作速度时触发安全钳。
- Remote Control (acc. EN81)
Is used to test the overspeed governor by apply the safety gear below tripping speed.

5.2 额外装置

Additional equipment

- 底座
底座用于将限速器固定到机房内
- 张紧装置
 - 摆臂式张紧
 - 垂直式张紧
- Base
A base is used to mount the overspeed governor in machine room.
- Tension weight
 - Swingarm tension weight
 - Vertical guided tension weight



限速器

OVERSPEED GOVERNOR

WCN OL35 / OL35E / OL35M 型
TYPE OL35 / OL35E / OL35M OF WCN

页号/sheet TC.7.004073.ZH.27

日期/date 02.11.2016

版本/version -

审批/approved WAT/KST

5.3 其他信息（基于 EN81）

Additional information (acc. EN81)

1. 限速器应当便于检测和维护
2. 如果限速器是安装在井道里，应当可从井道外接近并进行检修

1. *The overspeed governor shall be accessible for inspection and maintenance.*
2. *If located in the well the overspeed governor shall be accessible and reachable from outside the well.*

如果满足以下条件，则要求（2）不适用：

The requirement (2.) does not apply if following three conditions are fulfilled:

- 限速器的动作被远程控制装置影响，从井道外部运行限速器(无线缆除外)，因此不会发生意外的触发动作，且促动装置无法被未经授权人员触及
- 限速器应便于从轿厢顶部或底坑进入以检查和维护
- 轿厢/配重向上运行时，限速器会在触发动作后自动复位。

- *The tripping of the overspeed governor is effected by means of a remote control, except cable less, from outside the well whereby an involuntary tripping is not effected and the actuation device is not accessible to unauthorized persons, and*
- *the overspeed governor is accessible for inspection and maintenance from the roof of the car or from the pit, and*
- *the overspeed governor returns after tripping automatically into the normal position, as the car/counterweight is moved in the upward direction.*

然而，通过从井道外部的远程控制，电气零件可能返回到正常位置，这不应影响限速器的正常功能。

However the electrical parts may return into the normal position by remote control from the outside of the well which shall not influence the normal function of the overspeed governor.



限速器

OVERSPEED GOVERNOR

页号/sheet

TC.7.004073.ZH.28

日期/date

02.11.2016

版本/version

-

审批/approved

WAT/KST

WCN OL35 / OL35E / OL35M 型
TYPE OL35 / OL35E / OL35M OF WCN

☐ 订购/ORDER ☐ 询价/INQUIRY 日期/DATE _____
公司/COMPANY _____
地址/ADDRESS _____
经手人/HANDLED BY _____
电话/TEL _____ 传真/FAX _____
电子邮箱/E-MAIL _____
开票地址/INVOICING ADDRESS _____
交货地址/DELIVERY ADDRESS _____

威特电梯部件(苏州)有限公司
Wittur Elevator Components (Suzhou) Co., Ltd.
江苏省吴江汾湖经济开发区库星路 18 号, 215214
18 Shexing Road, FoHo Economic Development Zone,
Wujiang, Jiangsu, China, 215214
传真/FAX: +86-512-63220044

交货条件/TERMS OF DELIVERY

交货日期/ DELIVERY DATE

订单号/ ORDER NUMBER

电梯号/ELEVATOR NUMBER

产品代码/ Produce code

☐ OL35☐ OL35E☐ OL35M

数量/ Quantity _____

额定速度/Nominal speed

NS _____ m/s

☐ 轿厢侧/Car☐ 对重侧/ Counterweight

动作方向/Tripping direction

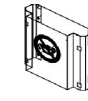
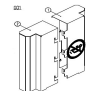
☐ 左/Left☐ 右/Right

钢丝绳直径/Rope diameter

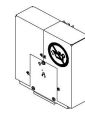
☐ 6mm☐ 8mm (仅适用于 OL35E/OL35E only)

安全罩壳型号/Safety cover-type

OL35:

☐ 86137☐ 604110☐ 604110

OL35E/M:

☐ 903318

触发方式/Tripping device

☐ 标准(手动触发)/Standard (manual tripping)☐ 远程控制/Remote control

技术标准/Technical survey

☐ GB7588☐ EN81-1☐ EN81-20

底座/ Base (选配 Optional)

☐ 是/Yes☐ 否/No

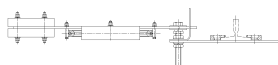
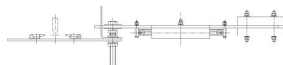
如需要/If yes

☐ 86118G01☐ 97037G01

悬臂式张紧配重/ Swing arm tension weight (选配 Optional)

☐ 是/Yes☐ 否/No

版本/Version

☐ 1、3 象限/1, 3 quadrant☐ 2、4 象限/2, 4 quadrant

张紧力/Tension force

☐ 350N(OL35 适用/for OL35)☐ 600N (OL35E/M 适用/for OL35E/M)

重块类型/Type of weight

☐ 铁/Iron☐ 复合材料/Composite

导轨型号

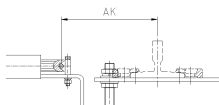
☐ T75☐ T82☐ T89☐ T90☐ T114

Type of guide rail

☐ T125☐ T127

钢丝绳位置 AK [mm]

Rope position AK [mm]

☐ AK=160☐ AK=220☐ AK=250☐ AK=350☐ AK=415

安全标准/Safety code

☐ GB7588☐ EN81

单价/Unit Price



限速器

OVERSPEED GOVERNOR

WCN OL35 / OL35E / OL35M 型
TYPE OL35 / OL35E / OL35M OF WCN

页号/sheet

TC.7.004073.ZH.29

日期/date

02.11.2016

版本/version

-

审批/approved

WAT/KST

☐ 订购/ORDER ☐ 询价/INQUIRY 日期/DATE _____
公司/COMPANY _____
地址/ADDRESS _____
经手人/HANDLED BY _____
☎ _____ 传真/FAX _____
电子邮箱/E-MAIL _____
开票地址/INVOICING ADDRESS _____
交货地址/DELIVERY ADDRESS _____

威特电梯部件（苏州）有限公司
Wittur Elevator Components (Suzhou) Co., Ltd.

江苏省吴江汾湖经济开发区库星路 18 号, 215214
18 Shexing Road, FoHo Economic Development Zone,
Wujiang, Jiangsu, China, 215214
传真/FAX: +86-512-63220044

交货条件/TERMS OF DELIVERY

交货日期/ DELIVERY DATE

订单号/ ORDER NUMBER

电梯号/ELEVATOR NUMBER

垂直式张紧配重/ Vertical tension weight (选配 Optional)

☐ 是/Yes

☐ 否/No

固定方法/Fixing method

☐ 导轨/Guide rail

☐ 底坑/Pit floor

重块类型/Type of weight

☐ 铁/Iron

☐ 复合材料/Composite

导轨型号

☐ T75

☐ T82

☐ T89

☐ T90

☐ T114

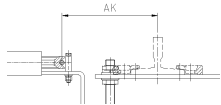
Type of guide rail

☐ T125

☐ T127

钢丝绳位置 AK [mm]

Rope position AK [mm]



☐ AK=160

☐ AK=220

☐ AK=250

☐ AK=350

☐ AK=415

安全标准/Safety code

☐ GB7588

☐ EN81

包装/ Packing

☐ 标准/Standard

☐ 全英文包装/English package

其他非标要求/ Other requirements

单价/Unit Price

总价/Total