

TECHNICAL CATALOGUE



ECO BUS 2.0

Nummer/Code **TC.2.001934.EN**

Stand/Version **F**

Datum/Date **19.02.2018**

AUTOMATIC FOLDING DOOR



No part of this publication may be reproduced or translated, even in part, without prior written permission from WITTUR.

Subject to change without notice!

info@sematic.it
www.sematic.it

© Copyright WITTUR 2015


safety *in motion*TM

CONTENT

1 GENERAL	3	1.5 Sill fixing	7
1.1 Production range	3	1.5.1 Sill types	8
1.2 Technical Features	3	1.6 Mechanical Release System for Swing Landing Doors	10
1.2.1 Features	3	1.7 Weights	12
1.2.2 Execution	3	2 OPTIONS	13
1.2.3 Equipment (optional)	3	2.1 Car Door Lock	13
1.3 General dimensions	4	2.1.1 Shaft vane unit	14
1.3.1 Door drive control unit	5	2.2 Vision panels	15
1.4 Operator fixing	6	2.3 Curtain of light	16
1.4.1 Side fixing (Standard)	6		
1.4.2 Roof fixing A	6		
1.4.3 Roof fixing B	6		

1 GENERAL

1.1 Production range

Door type	Illustration	Clear opening (CO)		Clear height (CH)
Flat Version		500	850	2000 2100
		550	900	
		600	950	
		650	1000	
		700	1050	
		750	1100	
		800		

1.2 Technical Features

1.2.1 Features

- Ideal for modernisation of elevators with existing swing doors
- Higher reliability and performance with ECO linear belt drive (see D27GCDEGB)
- Closed loop control
- Speed setting according to disabled people rules possible
- Reduced weight and overall dimensions
- Integrated mechanical release system for the swing landing doors
- Easy installation and speed adjustment
- Simple maintenance
- Simple interface to existing elevator controllers (see D235MGB)

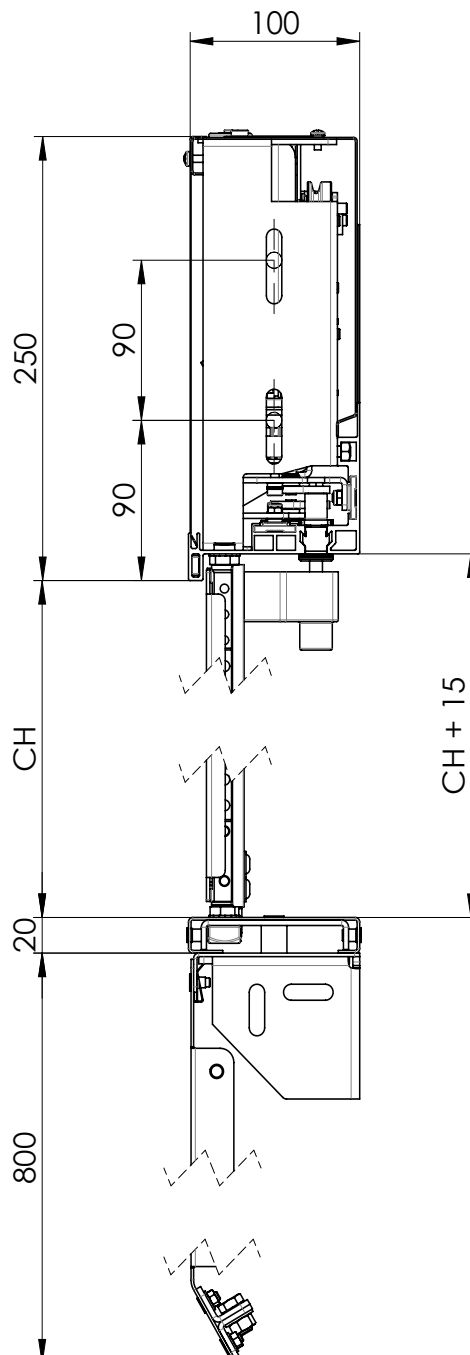
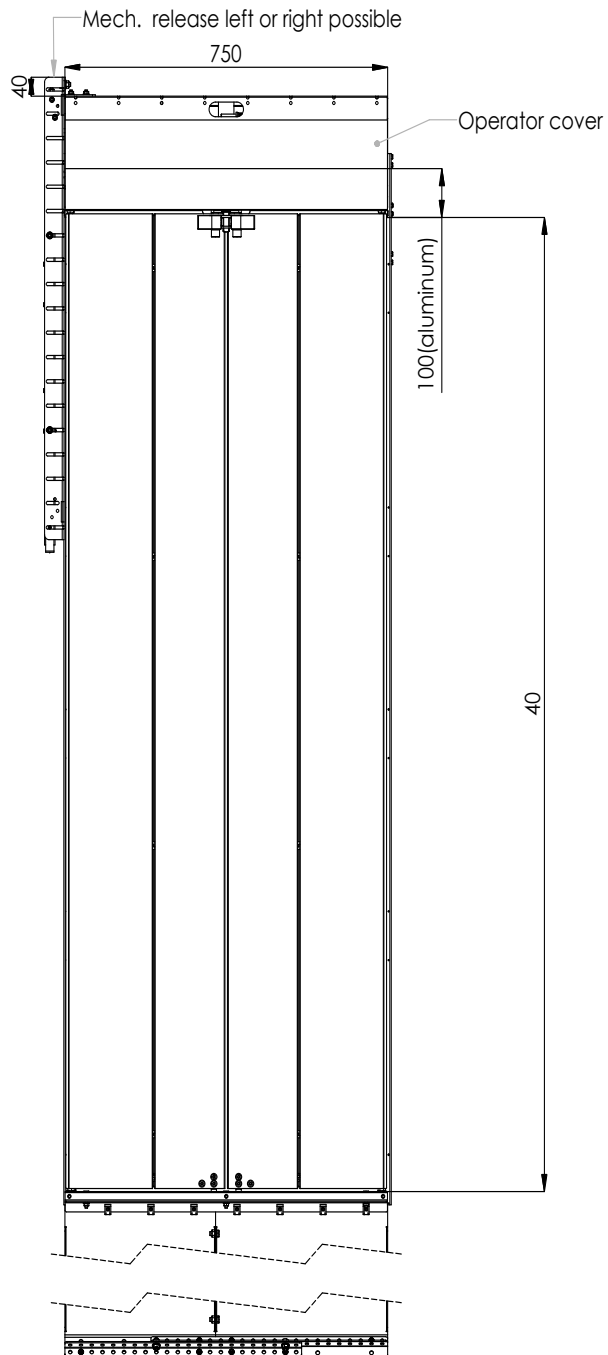
1.2.2 Execution

- Door panels zinc coated, in stainless steel (different structures) or painted.
- Operator cover zinc coated, in stainless steel (different structures) or painted

1.2.3 Equipment (optional)

- Car Door Lock
- Vision panels
- Fulfills the requirements according to LD95/16EG and EN81-20/50

1.3 General dimensions



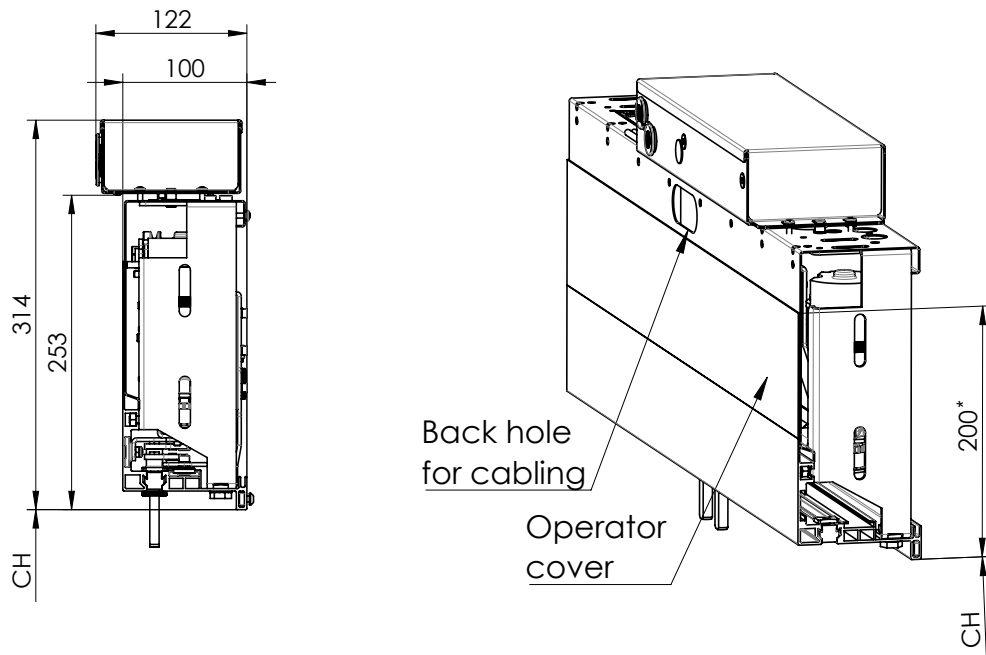
CO	PC
500	550
550	600
600	650
650	700
700	750
750	800
800	850
850	900
900	950
950	1000
1000	1050
1050	1100
1100	1150

CH
2000
2100

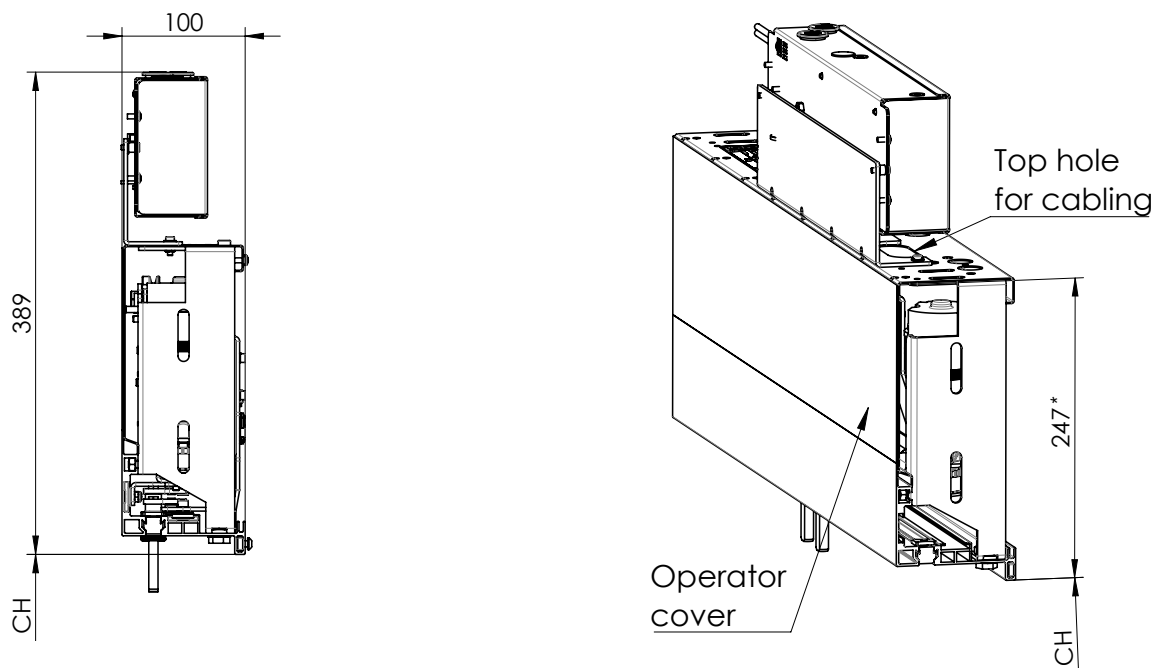
1.3.1 Door drive control unit

Door drive control unit can be mounted horizontal and vertical on the operator or on the car roof (cable length 1300mm).

1.3.1.1 Horizontal door drive control unit



1.3.1.2 Vertical door drive control unit



*Max. covered car internal height

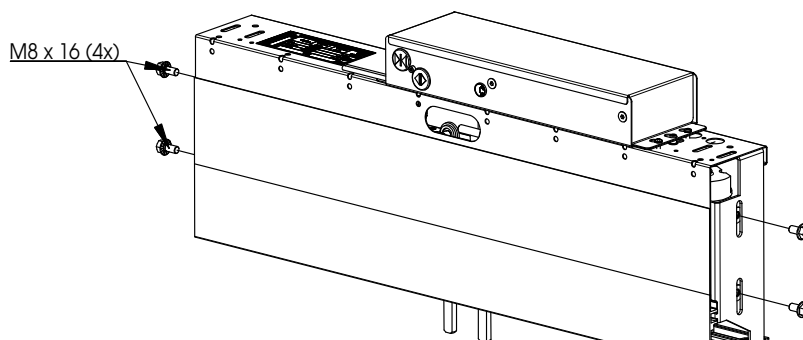
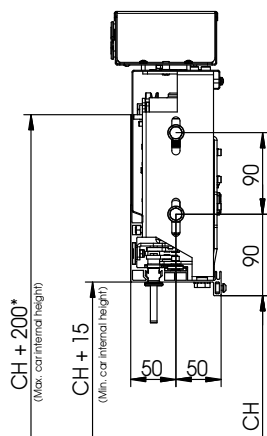


WITTUR

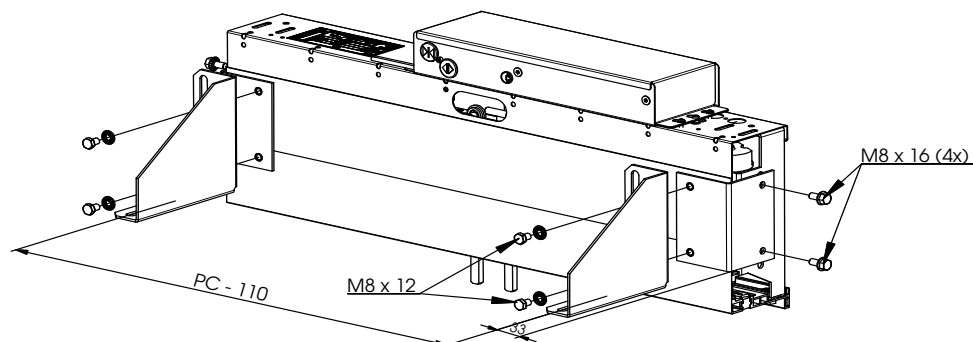
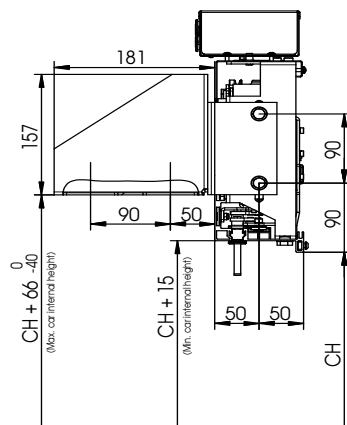
Code TC.2.001934.EN
Version E
Date 19.02.2018
Page 6

1.4 Operator fixing

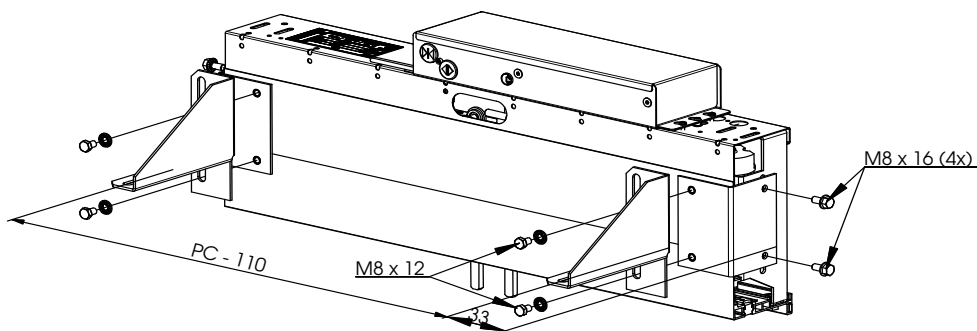
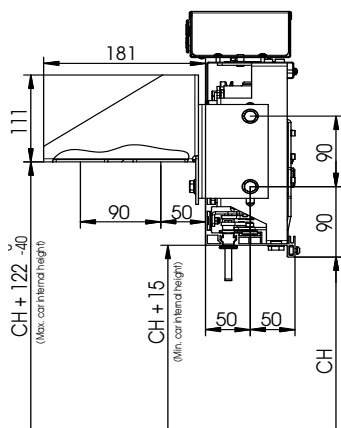
1.4.1 Side fixing (Standard)



1.4.2 Roof fixing A

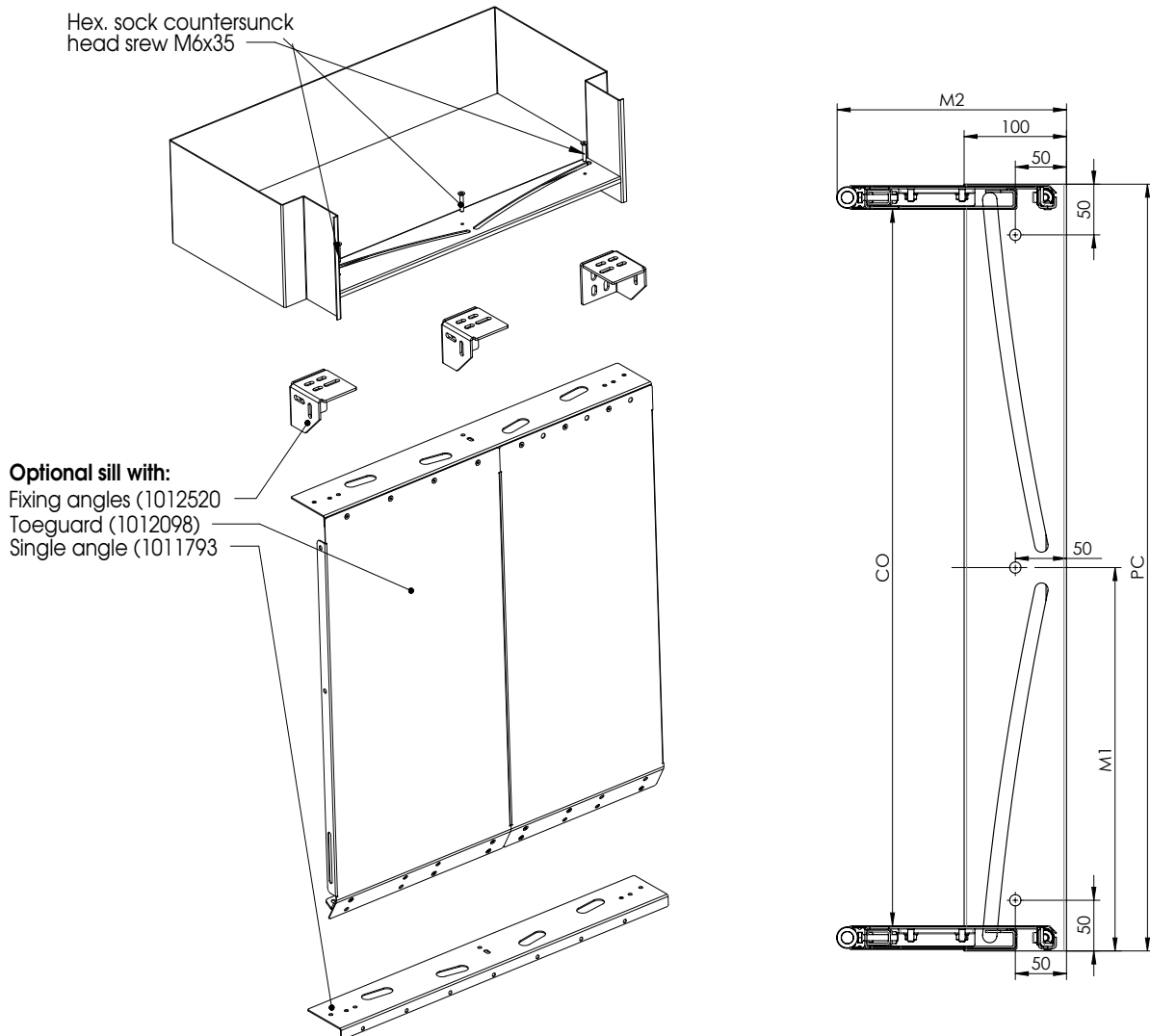


1.4.3 Roof fixing B

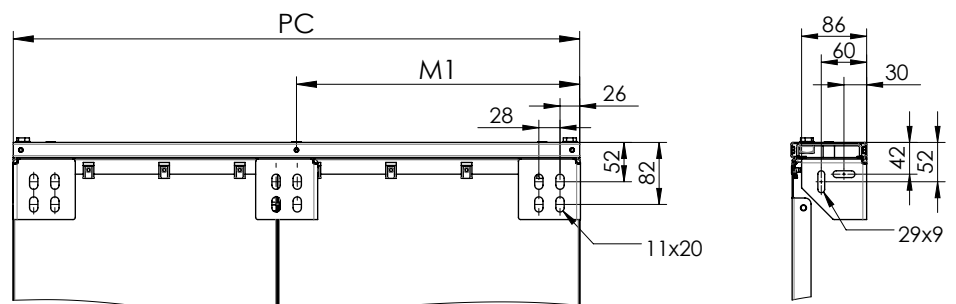


Subject to change without notice!

1.5 Sill fixing

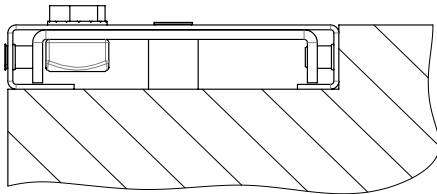


PC	M1	M2
550	275	175±1
600	300	187,5±1
650	325	200±1
700	350	212,5±1
750	375	225±1
800	400	237,5±1
850	425	250±1
900	450	262,5±1
950	475	275±1
1000	500	287,5±1
1050	525	300±1
1100	550	312,5±1
1150	575	325±1

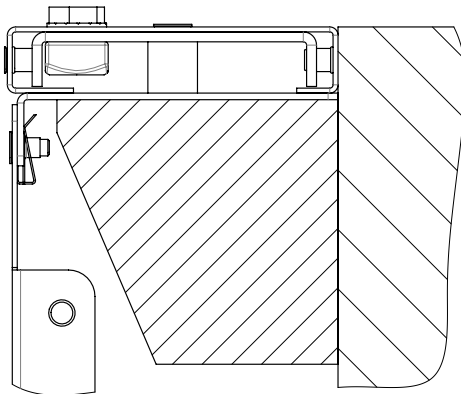


1.5.1 Sill types

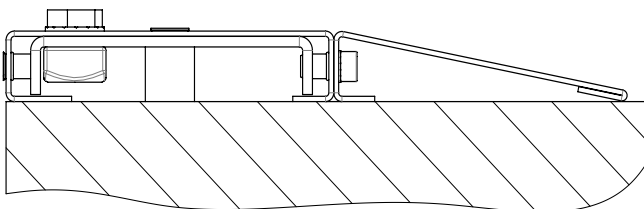
1.5.1.1 Flush mounted without support without toe guard



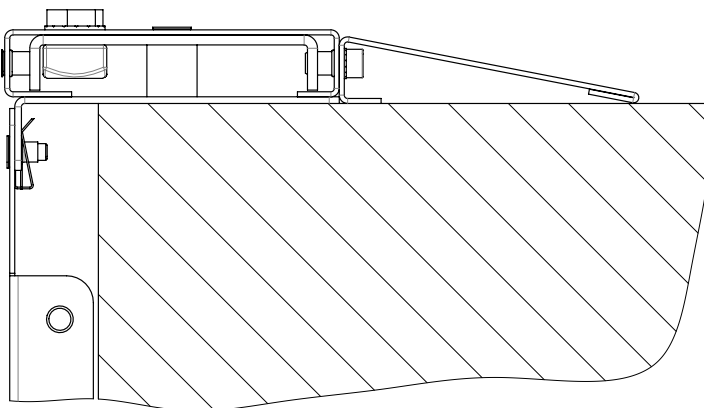
1.5.1.2 Flush mounted without support with toe guard



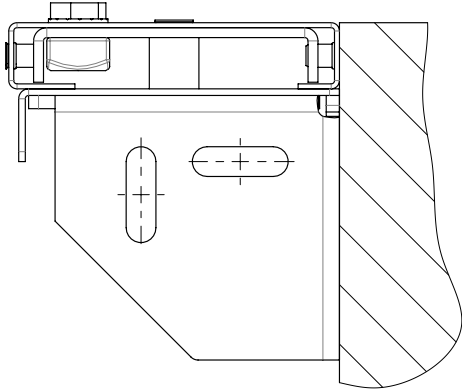
1.5.1.3 Prominent mounted without support without toe guard



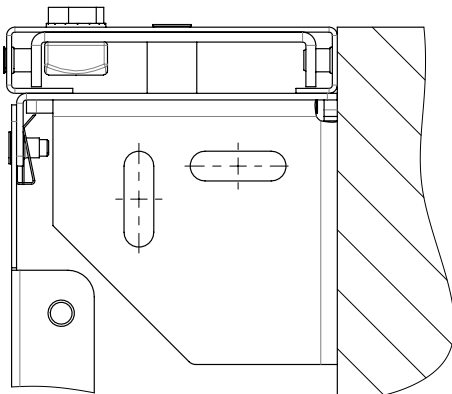
1.5.1.4 Prominent mounted without support with toe guard



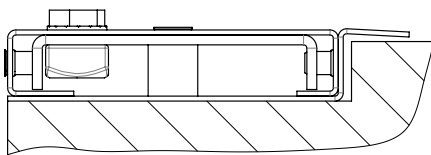
1.5.1.5 Flush mounted with support without toe guard



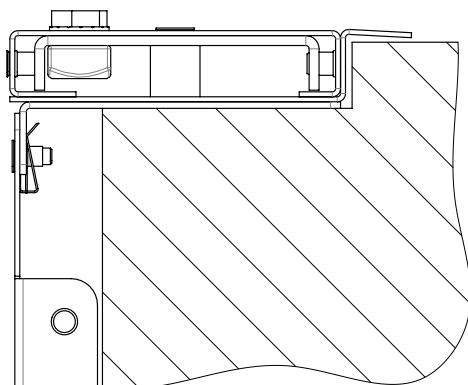
1.5.1.6 Flush mounted with support and toe guard



1.5.1.7 Flush mounted with carpet trim without toe guard



1.5.1.8 Flush mounted with carpet trim and toe guard





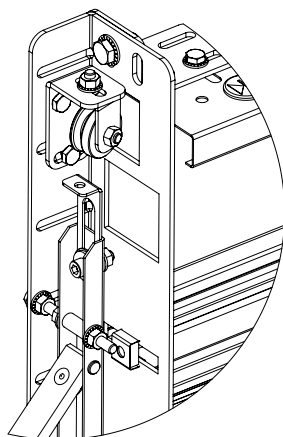
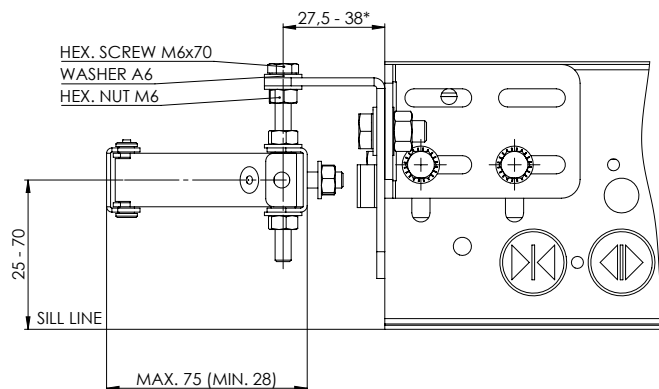
WITTUR

Code TC.2.001934.EN
Version F
Date 19.02.2018
Page 10

1.6 Mechanical Release System for Swing Landing Doors

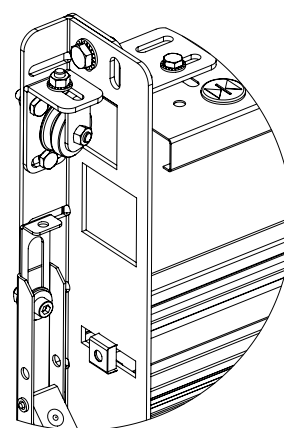
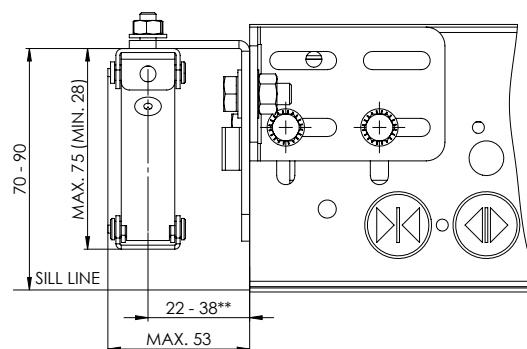
PARALLEL

(Ramp mounted on left side / plastic roller not illustrated)



PERPENDICULAR

(Ramp mounted on left side / plastic roller not illustrated)



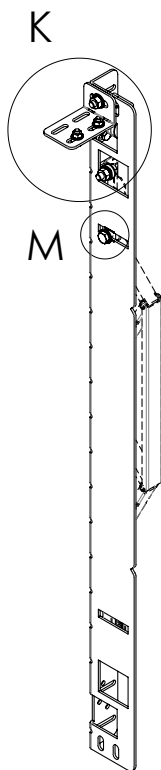
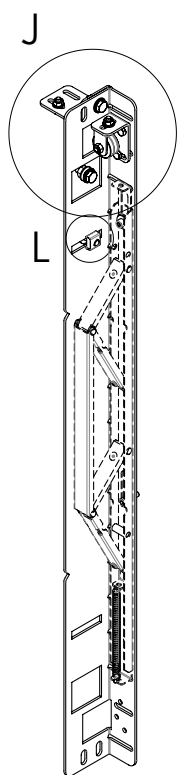
*	standard	27,5 - 38
	small shaft	27,5
**	standard	22 - 38
	small shaft	22 - 28

Subject to change without notice!



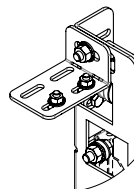
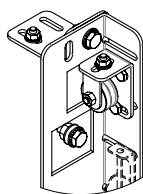
WITTUR

Code TC.2.001934.EN
Version D
Date 19.02.2018
Page 11



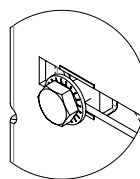
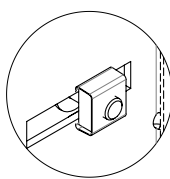
DETAIL J

DETAIL K



DETAIL L

DETAIL M



A07	small shaft	long angle	LH=CH-100 1000
A05	small shaft	short angle	LH=CH-100 250
A03	standard	long angle	LH=CH-100 1000
A01	standard	short angle	LH=CH-100 250

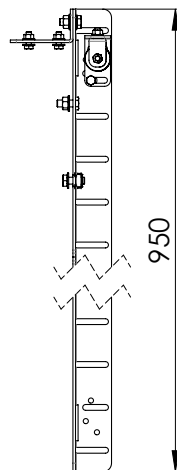
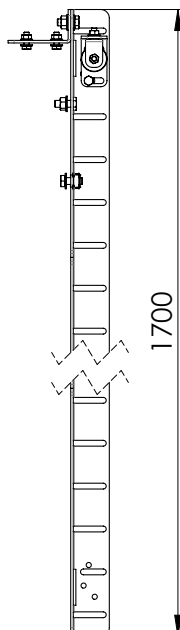
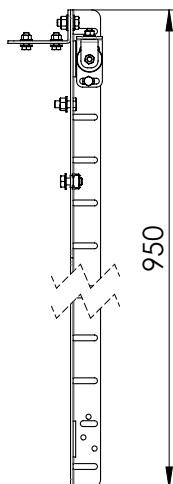
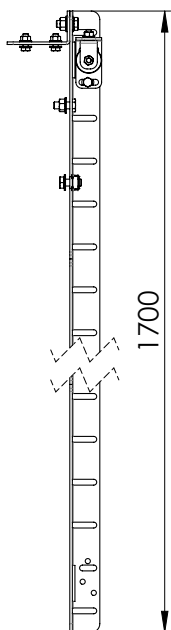
LH = Landing lock roller Position

A07

A05

A03

A01





WITTUR

Code TC.2.001934.EN
Version D
Date 19.02.2018
Page 12

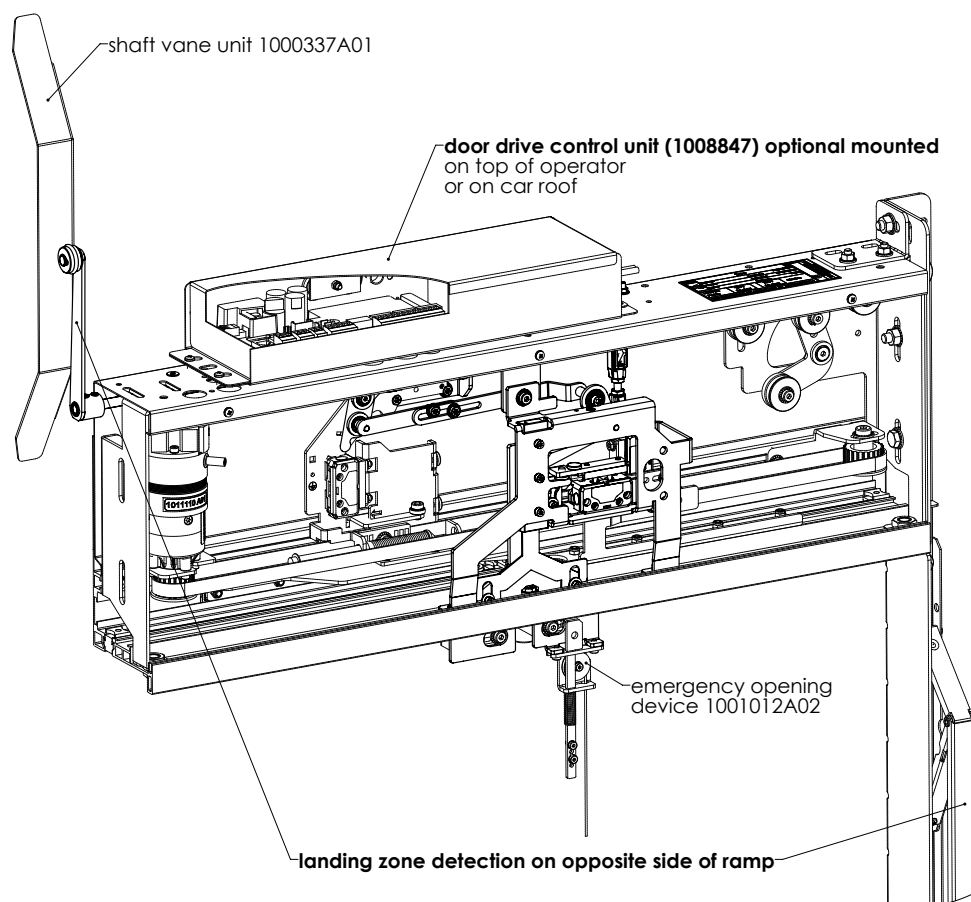
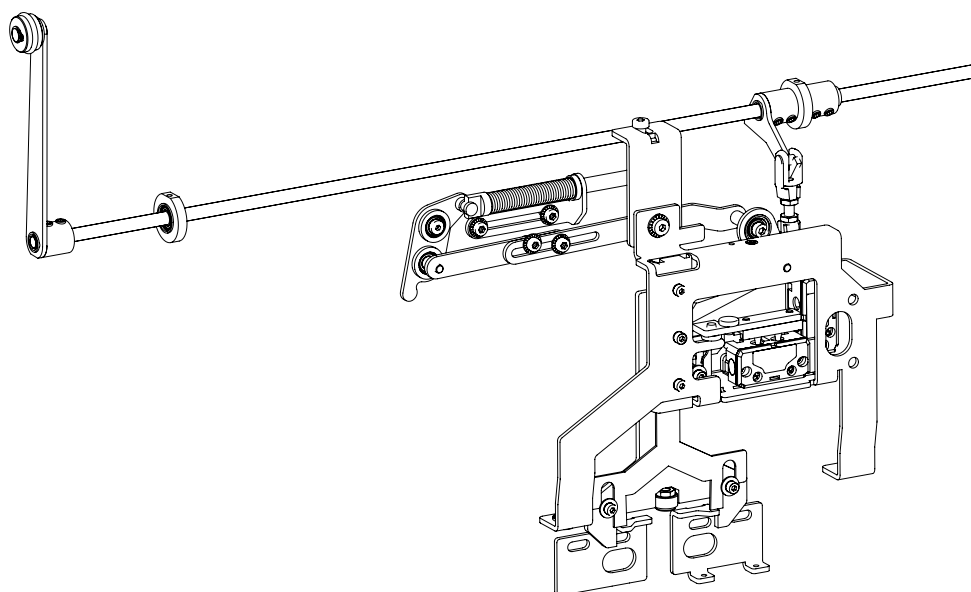
1.7 Weights

Weights ECO BUS LH=2000							
CO	PC	Set of panels (standard)	Mechanism & ramp & accessories	Toe guard	Toeguard fixings	Sill & sill support	TOTAL
500	550	36,22	18,90	5,57	1,5	1,80	64,00
550	600	38,36	19,44	5,98	1,5	1,96	67,24
600	650	40,30	19,94	6,45	1,5	2,12	70,31
650	700	41,80	20,54	6,92	1,5	2,29	73,05
700	750	43,76	21,14	7,39	1,5	2,45	76,24
750	800	45,70	21,64	8,27	1,5	2,61	79,72
800	850	47,62	22,14	8,33	1,5	2,77	82,36
850	900	49,62	22,64	8,80	1,5	2,93	85,49
900	950	51,56	23,14	9,27	1,5	3,10	88,57
950	1000	53,52	23,84	9,74	1,5	3,26	91,86
1000	1050	55,46	24,34	10,22	1,5	3,42	94,94
1050	1100	57,42	24,84	10,69	1,5	3,58	98,03
1100	1150	59,38	25,44	11,16	1,5	3,74	101,22

2 OPTIONS

2.1 Car Door Lock

Certified according to EN 81 - 20/50.



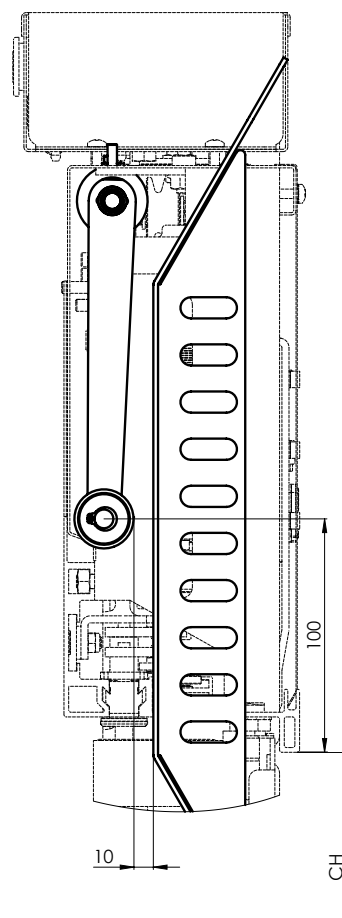
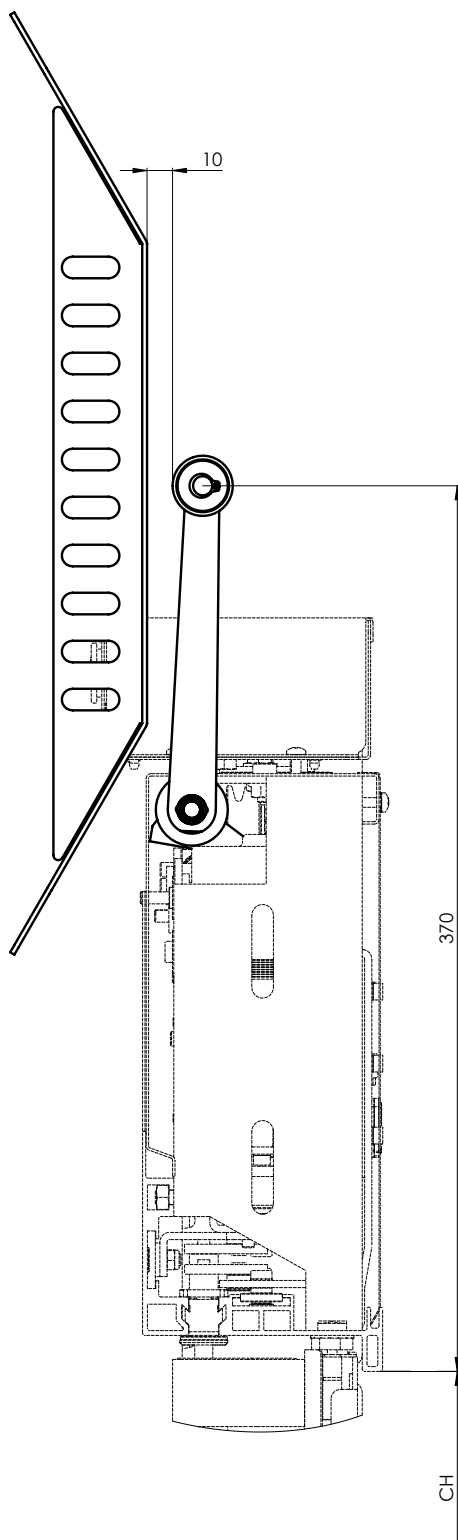


WITTUR

Code TC.2.001934.EN
Version D
Date 19.02.2018
Page 14

2.1.1 Shaft vane unit

One shaft vane unit per floor is mandatory.



A proper function of the CDL can only be guaranteed for a correct mounted shaft vane unit!

Subject to change without notice!



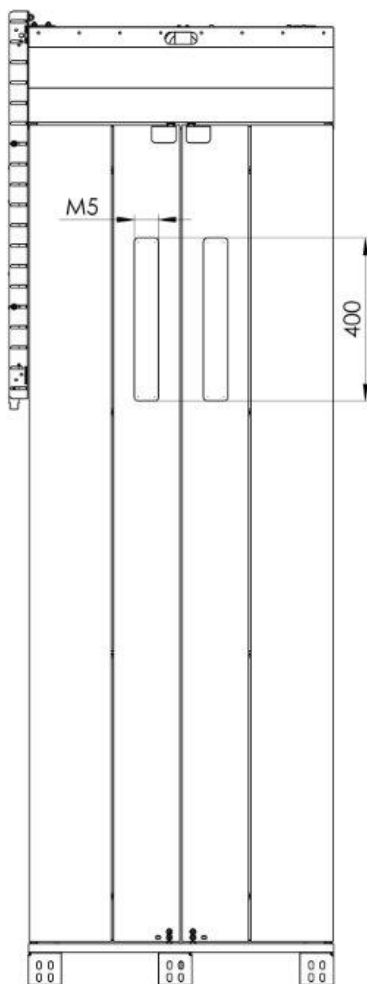
WITTUR

Code TC.2.001934.EN
 Version D
 Date 19.02.2018
 Page 15

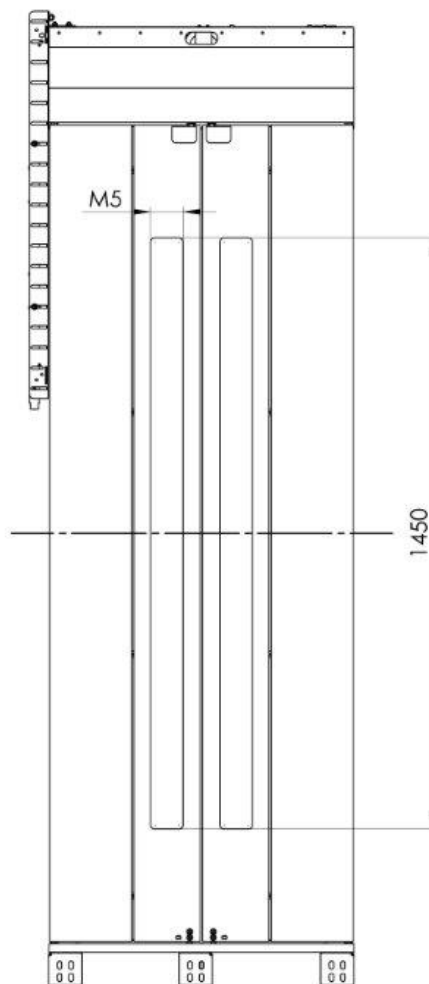
2.2 Vision panels

Certified according to EN 81 - 20/50.

standard vision panel



big vision panel

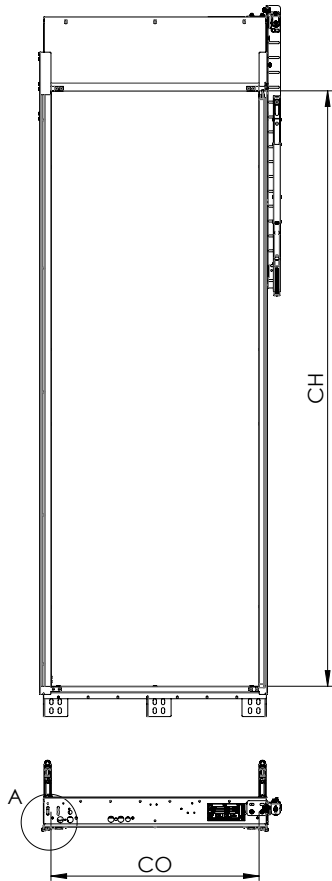


CO	PC	standard vision panel	big vision panel
700	750	400 x 60	1450 x 60
750	800		
800	850	400 x 80	1450 x 80
850	900		
900	950		
950	1000		
1000	1050		
1050	1100		
1100	1150		

* Vision panels not available for CO < 700

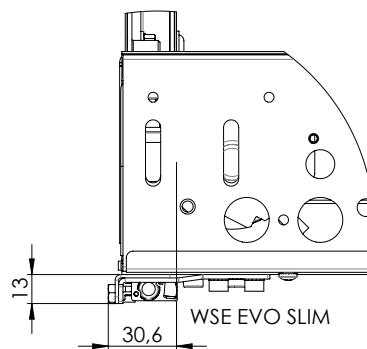
Subject to change without notice!

2.3 Curtain of light

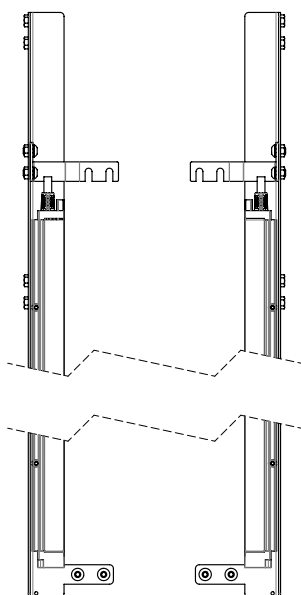


WSE EVO SLIM	
CH	2000
	2100

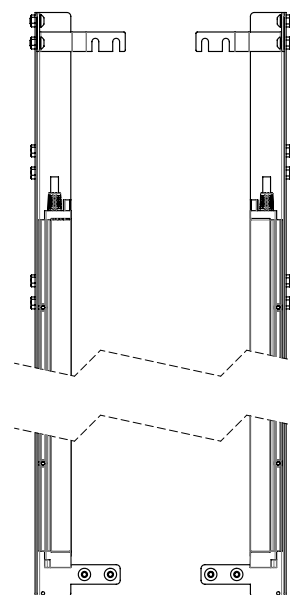
Detail A
1: 2



CH 2000

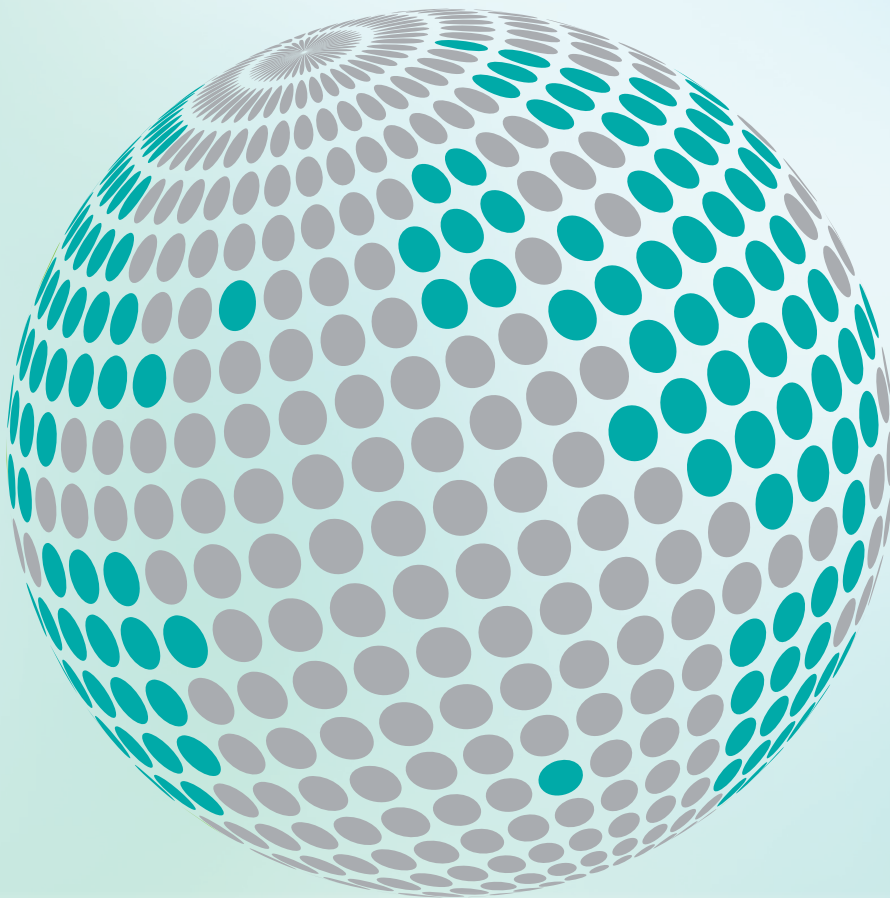


CH 2100





**YOUR GLOBAL PARTNER FOR COMPONENTS,
MODULES AND SYSTEMS IN THE ELEVATOR INDUSTRY**



safety **in** *motion*™

www.wittur.com

More information
about Wittur Group
available on-line.



SELCOM®
a WITTUR brand

Liftmaterial
a WITTUR brand

semaTIC®
a WITTUR brand