

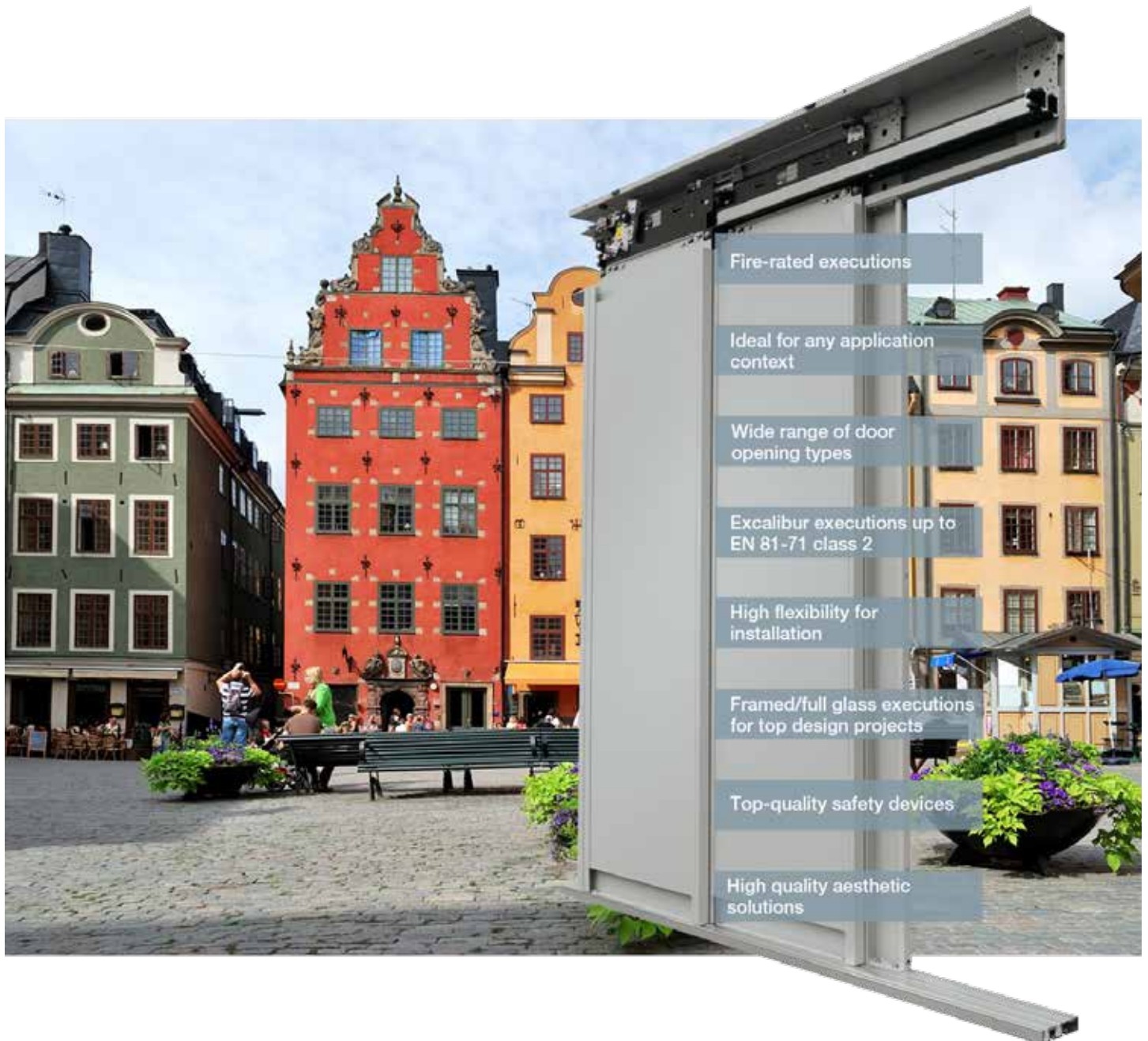
# 2000 B

## MULTIPURPOSE DOORS



safety in motion™

APPLICATIONS		DESTINATIONS					
		PASSENGERS		GOODS		SPECIAL USES	
		DOORS	CARS	DOORS	CARS	DOORS	CARS
HOMELIFT			ADAPTA VARIO				
RESIDENTIAL		2000 B	ADAPTA		CARGO		CUSTOM
OFFICES		2000 B	ADAPTA		CARGO		CUSTOM PANOR./ CUSTOM
HIGH RISE			VARIO		CARGO		CARGO
HOSPITALS		2000 B	VARIO		ADAPTA		ADAPTA
TRANSPORT		2000 B	ADAPTA		CARGO		CUSTOM
MODERNIZATION			EASY ADAPTA		CARGO		CARGO
HOTELS		2000 B	VARIO		ADAPTA		PANORAMIC CUSTOM
SHOPPING CENTERS		2000 B	ADAPTA		ADAPTA		CARGO PANOR./ CUSTOM
INDUSTRIAL					CARGO		CUSTOM CARGO



## Reliability, flexibility and pleasant aesthetic design for every architectural solution

Ideal for any application, Sematic 2000 B features high flexibility and a complete portfolio of finishes and fixings. Wide range of frame customizations, special executions, installation in the shaft or in recess are only a few of the features of this product.

Sematic 2000 B covers a wide range of international regulation requirements and fire certifications, even for glass executions; all of Sematic products are designed,

produced and tested to satisfy high technical and qualitative standards, with special care to safety.

Wherever aesthetics is a must, Sematic 2000 B offers prestigious solutions, such as glass executions (with or without glass frame), hidden bottom track, underdriven operator and a pool of other options, which make these products perfect for the integration into the most ambitious architectural projects.

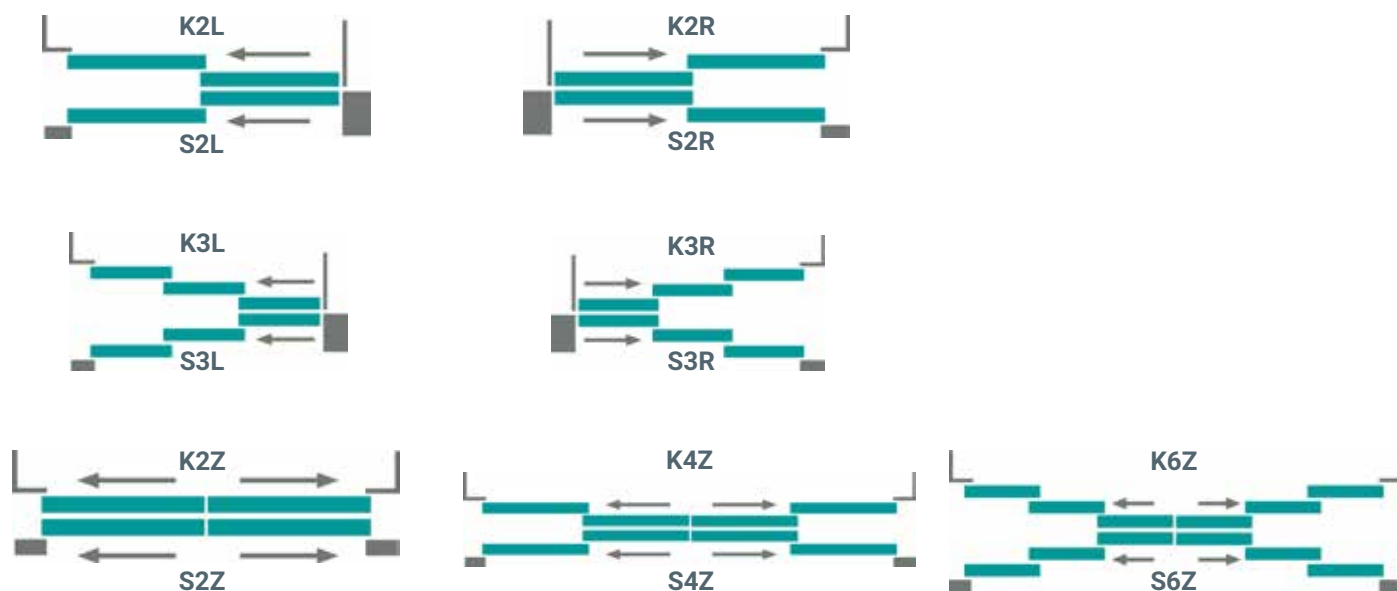
PRODUCT RANGE		
Model	TB min-max (mm)	TH min-max (mm)
K-S 2R/L	500 - 1800	2000 - 3000
K-S 3R/L	700 - 1800	2000 - 3000
K-S 2Z	500 - 1800	2000 - 3000
K-S 4Z	700 - 3000	2000 - 3000
K-S 6Z	1000 - 3000	2000 - 3000

For further information see our technical catalogues

BOTTOM TRACK PACK OVERALL DIMENSION (mm)			
Opening	K (car)	S (landing)	Pack <sup>(1)</sup>
2R/L	90	135	255
3R/L	135	180	345
2Z	45	90	165
4Z	90	135	255
6Z	135	180	345

<sup>(1)</sup> 30mm bottom track distance

## DOOR OPENING TYPE



## FIRE RATED EXECUTIONS - EN 81-58

Model	Steel doors	Framed glass doors
S 2R/L	E 120 EW 60 EI 60 EI 120	E 120
S 3R/L		
S 2Z		
S 4Z		
S 6Z		

BS 476, GOST and many other certifications available. Call for information.

## CABINS SUGGESTED FOR THIS DOOR

> ADAPTA > VARIO

## STANDARD MOTORIZATION

Belt-driven operator with 24 Vdc optical encoder controller motor, SDS® DC-PWM technology with integrated switching transformer

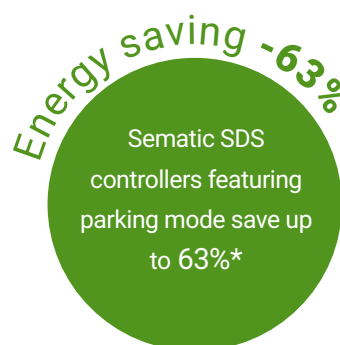
- Power supply voltage: 90-290 Vac (115 V -20%, 230 V + 26%), 50-60 Hz with integrated switching.
- Power rated 200 VA.
- Emergency power supply 24/36Vdc
- Operating temperature range -10°C to +60°C
- Operating humidity range: up to 80%
- On-board obstacle detection (door re-opening) feature
- Separately adjustable opening and closing speed
- Integrated self-learning cycle and automated speed profiles setting
- Double TB opening management

DOOR AND FRAME FINISHES	STANDARD	OPTIONS
RAL 7032 powder coating	✓	✗
Other RAL Colours	✗	✓
Framed glass panels and side posts	✗	✓
Frameless glass panels	✗	✓
Stainless steel claddings	✗	✓
Skin plate claddings	✗	✓
BOTTOM TRACK	STANDARD	OPTIONS
Aluminum	✓	✗
Steel	✗	✓
Stainless steel	✗	AISI 304 / AISI 316 others on request
Brass - Bronze	✗	available for all doors type except 3 R/L and 6Z

## SEMATIC FOR ENERGY SAVING

At Sematic, we take our energy use seriously.  
We have developed a set of technological devices that allow our elevator components to use as little energy as possible, such as our **Sematic SDS door controller**.

\* Door power consumption difference between normal standby mode and parking mode measured in laboratory



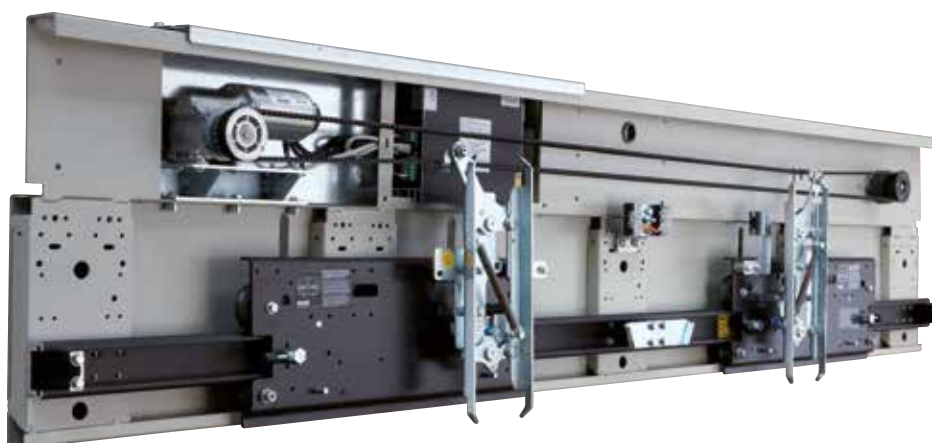


EN81

MAIN FEATURES	STANDARD	OPTIONS
Certified locking device	✓ EN81-1/2 ✓ EN81-20/50	✗
Position of the lock release	Integrated into the header	In the fast panel
Door closing	Spring	Counterweight or spirator
Door panels	Single skin	Double skin / Vision panel
Header height	280 mm	240 mm for 2RL, 2Z and 4Z 265 mm for 3RL and 6Z
Frame	135x45mm door posts	Reduced door posts (min. 60x45 mm) Increase door posts (> 135x45 mm)
Installation	In the shaft	In niche
Kit man in the pit	In case of EN81-20/50	In case of EN81-1/2
Monostable contact	✗	✓
Impact robust packaging	Cardboard box Wood (ISPM15)	✗

SPECIAL EXECUTION	OPTIONS
Portal execution	✓
Portal execution with glass	✓
Smoke-seal/Air-seal execution	✓
Anti-vandal execution	EN81-71
Hidden bottom track	✓ (no 3 R/L and 6Z)
Explosion proof	EEx II G - Atex
Australia execution	✓
Marine execution	✓
Underdriven operator	✓ (no 3 R/L and 6Z)

2Z execution shown  
in the picture

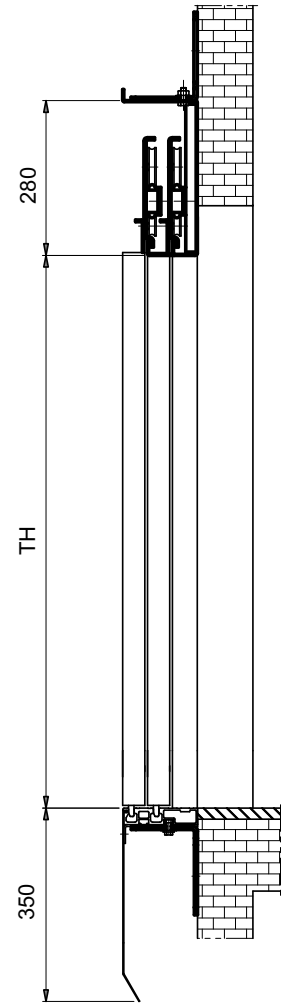
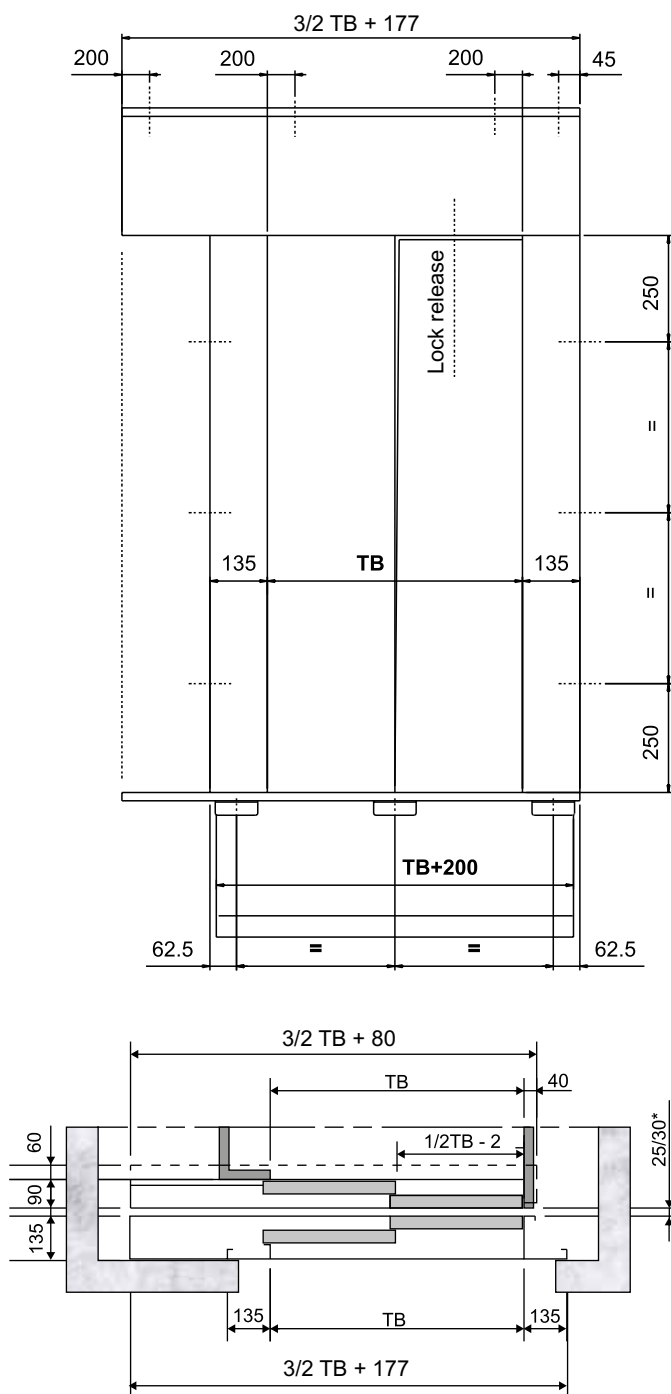


2Z execution  
shown in the picture

MAIN FEATURES	STANDARD	OPTIONS
Car door locking device	EN81-20/50	EN81-1/2
Skate	Expansion	x
Motorization	See pag. 5	Brushless with AC-VVVF technology
Door controller	SDS DC PWM	Other door controllers available. Please contact our sales department.
Door panels	Single skin	Double skin / Vision panel
Detecting system	x	Static / Dynamic
Operator height	445 mm	360 mm for 2RL, 2Z and 4Z 410 mm for 3RL and 6Z
Average car door cycles per year	800.000	x
Impact robust packaging	Cardboard box Wood (ISPM15)	x

SPECIAL EXECUTION	OPTIONS
Anti-vandal execution	EN81-71
Underdriven operator	✓ (no 3 R/L and 6Z)
Hidden bottom track	✓ (no 3 R/L and 6Z)
Explosion proof	EEx II G - Atex
Marine execution	✓

## 2L LAYOUT: FRONT, SIDE VIEWS AND COUPLING

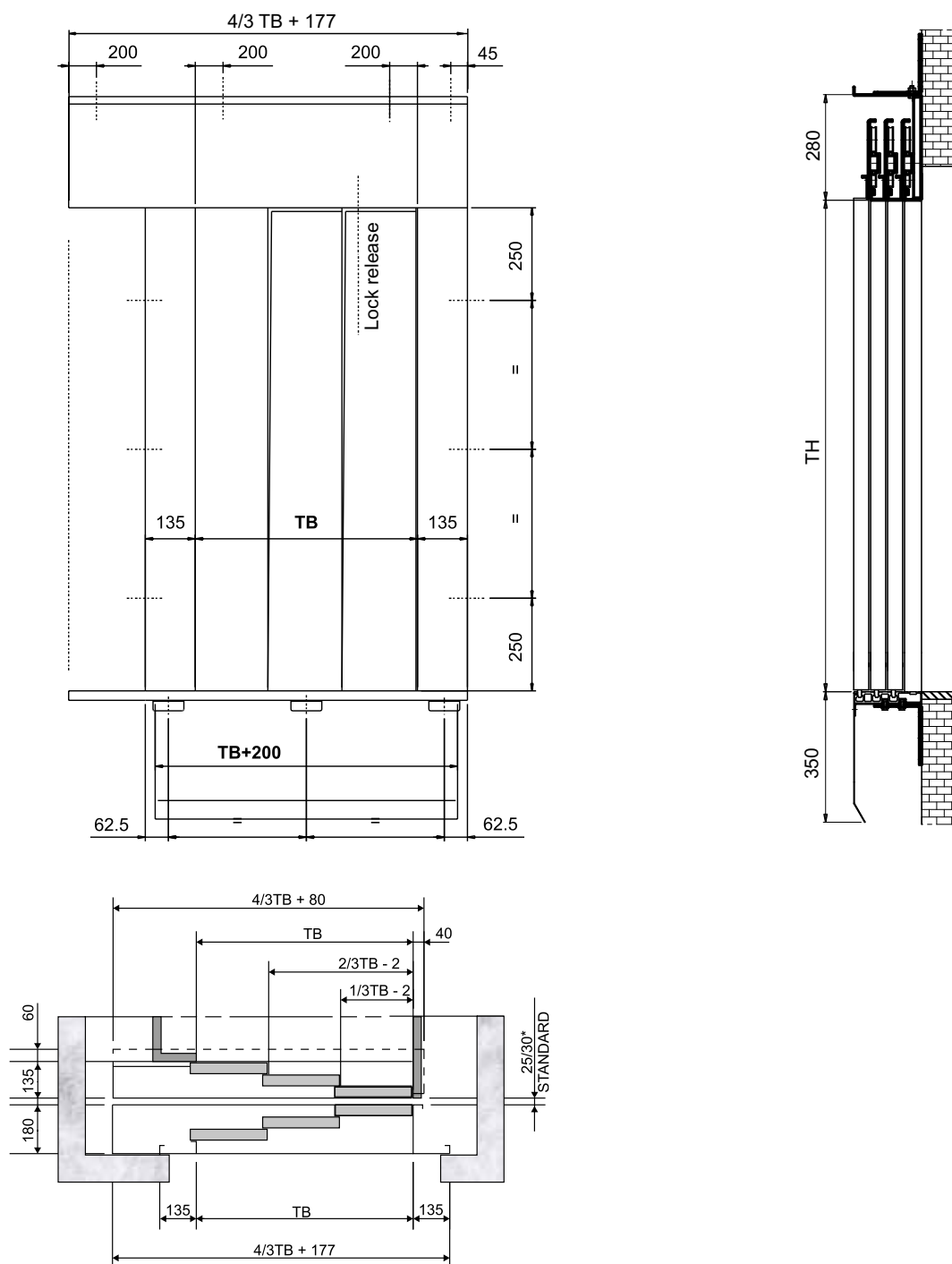


## NOTES

- 2L as drawing, 2R mirrored
- Sill to sill distance 30 mm
- For further information see our technical catalogues



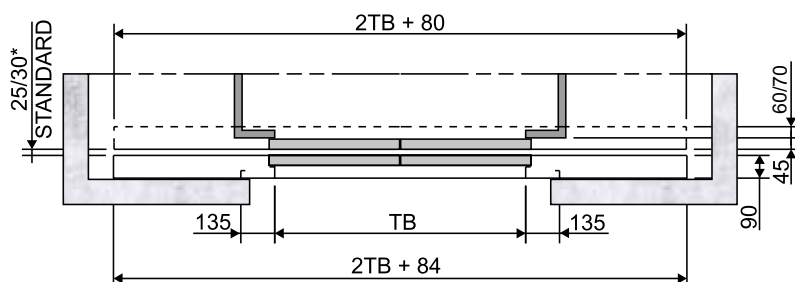
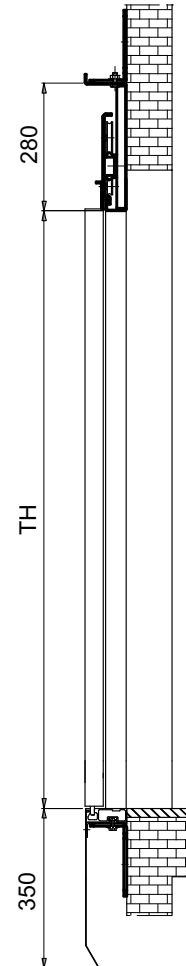
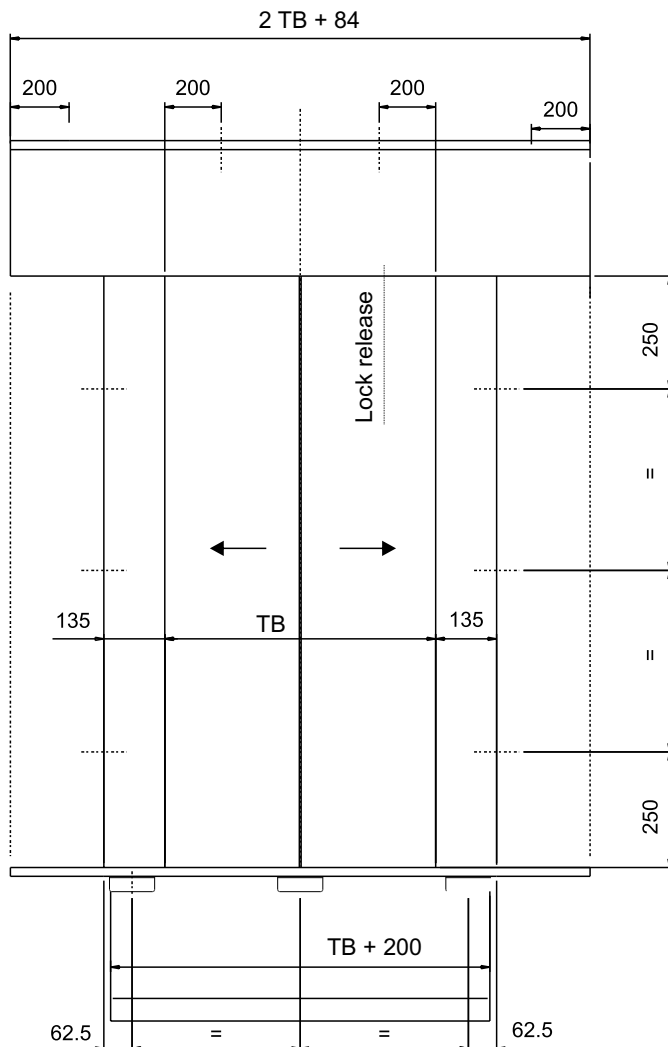
## 3L LAYOUT: FRONT, SIDE VIEWS AND COUPLING



## NOTES

- 3L as drawing, 3R mirrored
- Sill to sill distance 30 mm
- For further information see our technical catalogues

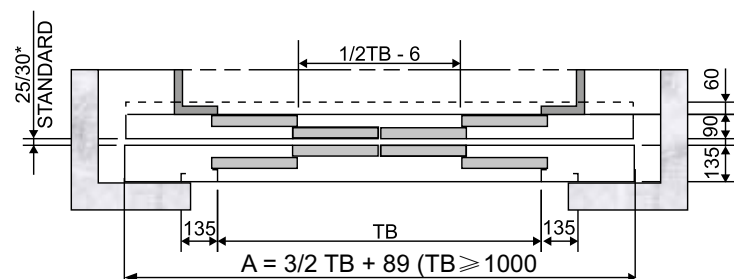
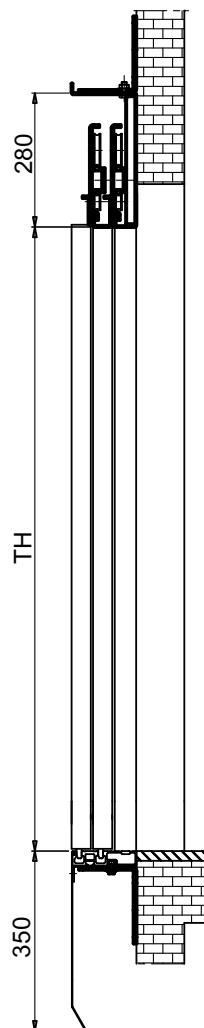
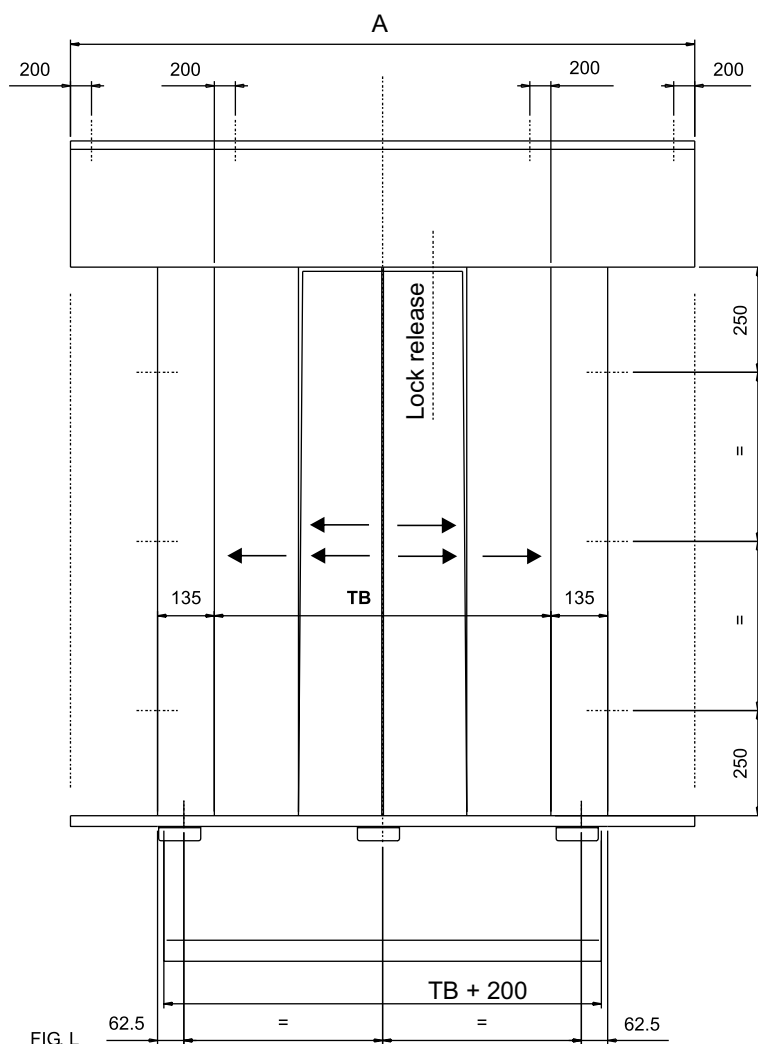
## 2Z LAYOUT: FRONT, SIDE VIEWS AND COUPLING



## NOTES

- Sill to sill distance 30 mm
- For further information see our technical catalogues

## 4Z LAYOUT: FRONT, SIDE VIEWS AND COUPLING

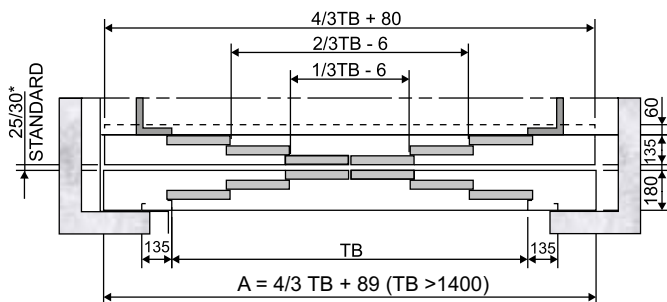
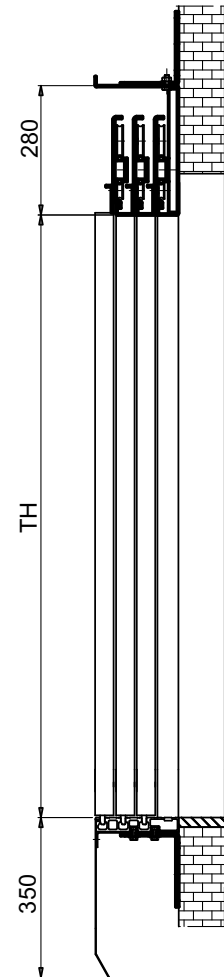
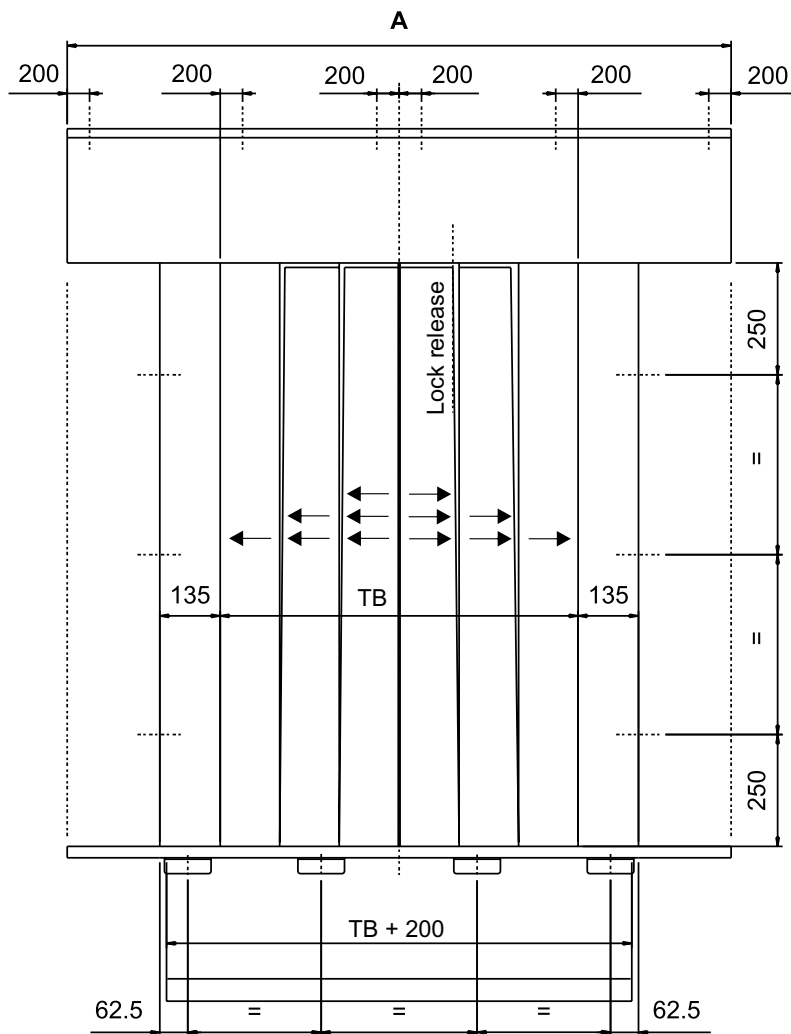


A	
TB < 1000; TH = 2000	TB + 510
TB < 1000; TH = 2100	TB + 545
TB < 1000; TH = 2200	TB + 580
1000 ≤ TB ≤ 3000	$\frac{3}{2} TB + 89$

## NOTES

- Dimensions included in the drawings are valid only for small TB/TH, standard execution (see table)
- Sill to sill distance 30 mm
- For further information see our technical catalogues

## 6Z LAYOUT: FRONT, SIDE VIEWS AND COUPLING

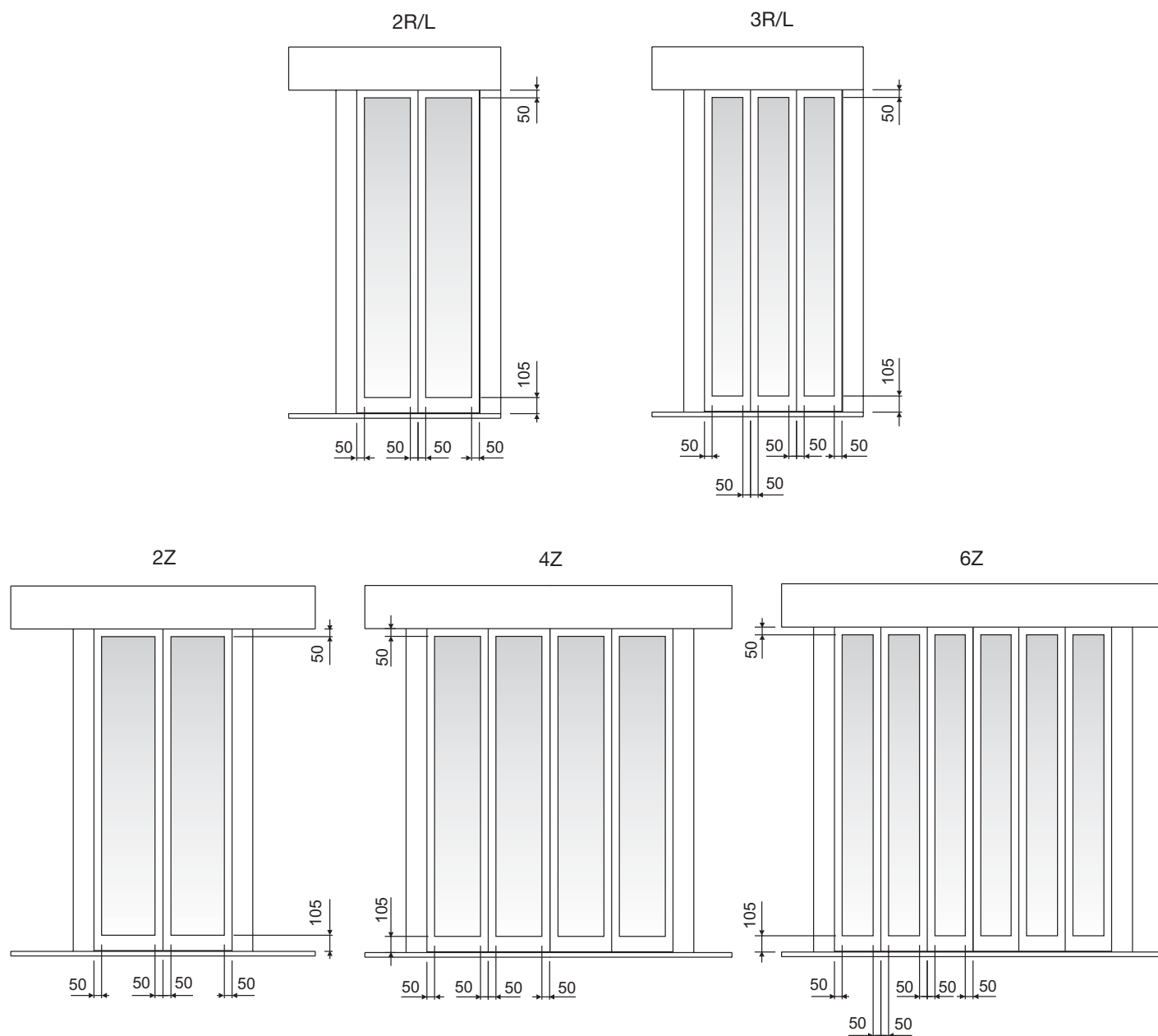


A	
$1000 \leq TB \leq 1350$	$TB + 510 + [35 \cdot (TH/2000)/100]$
$1400 \leq TB \leq 3000$	$4/3 TB + 89$

## NOTES

- Dimensions included in the drawings are valid only for small TB/TH, standard execution (see table)
- Sill to sill distance 30 mm
- For further information see our technical catalogues

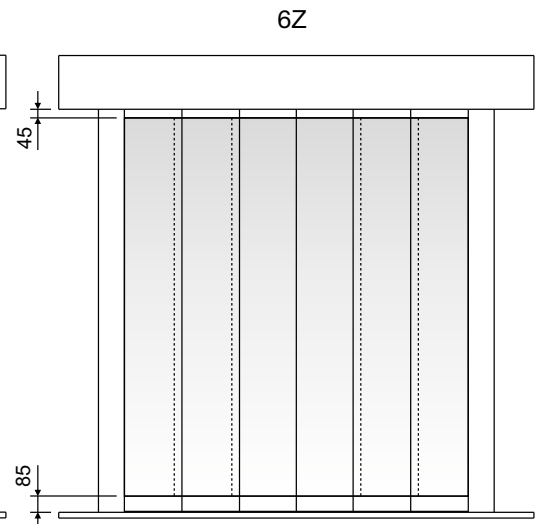
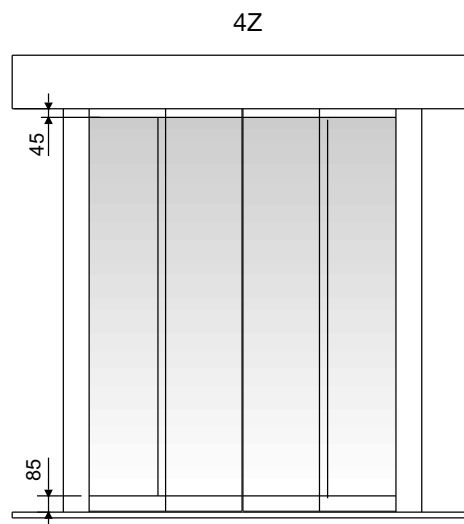
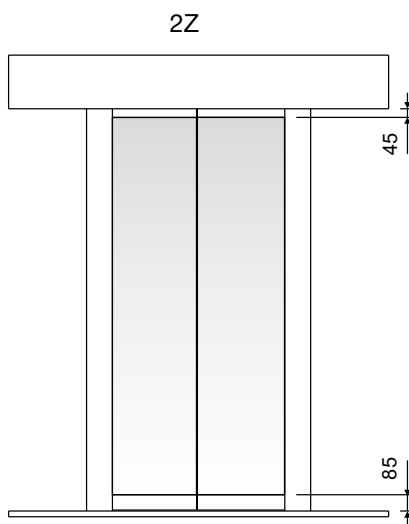
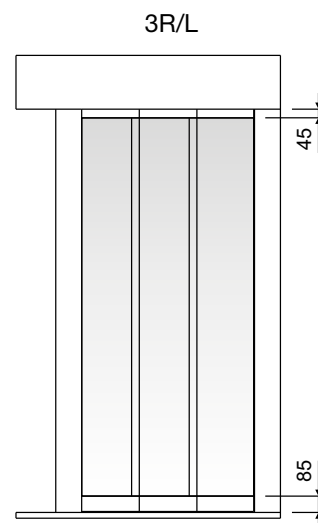
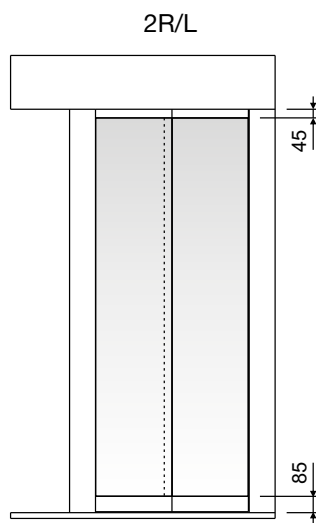
## STANDARD DIMENSIONS FOR FRAMED GLASS PANELS



## NOTES

- EN 81-58 and BS476 glass panels available too.
- For further information see our technical catalogues

## STANDARD DIMENSIONS FOR FULL GLASS PANELS



## NOTES

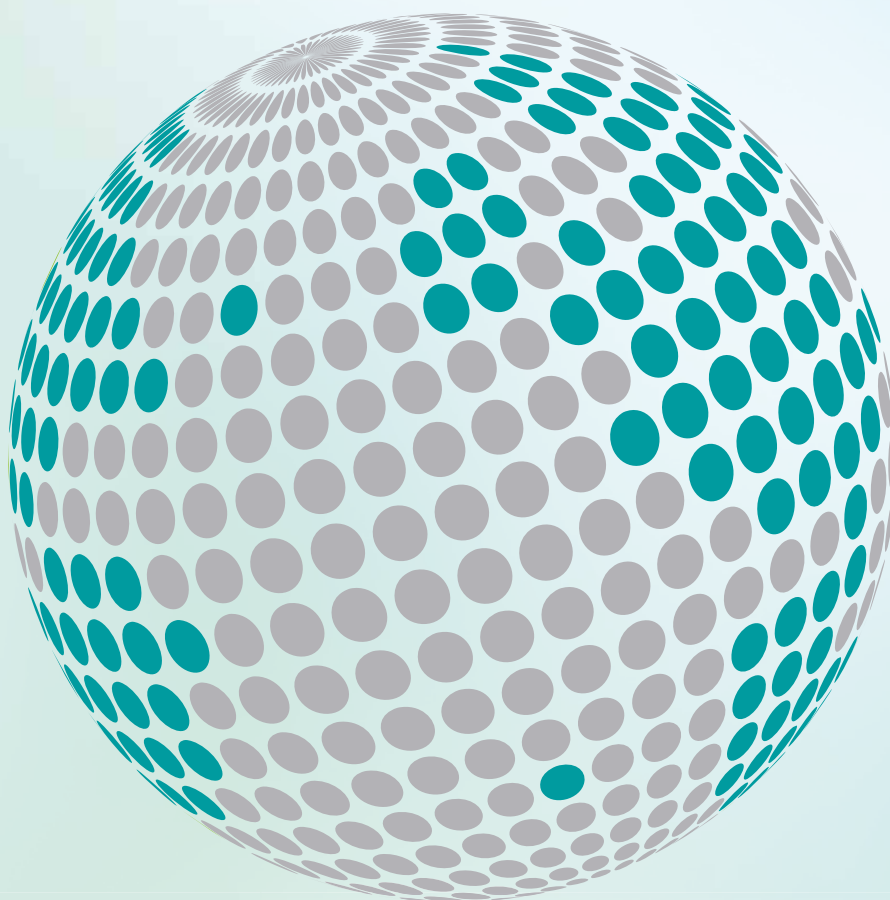
- For further information see our technical catalogues







**YOUR GLOBAL PARTNER FOR COMPONENTS,  
MODULES AND SYSTEMS IN THE ELEVATOR INDUSTRY**



*safety* **in** *motion*™

[www.wittur.com](http://www.wittur.com)

More information  
about Wittur Group  
available on-line.



**SELCON®**  
a WITTUR brand

**Liftmaterial**  
a WITTUR brand

**sematic®**  
a WITTUR brand