



Features 产品特性

- For lifts with an excellent ride confort
- High efficiency, reduce power consumption, extreme low-noise level
- Designed by outer rotor. Possible to generate bigger torque with low noise (48dB<62) and vibration (0.17mm/s<0.5). Provides comfortable ride.
- Use stable block brake as the braking system, smaller than arm brake and easier for adjustment.
- CTE test approved according to GB7588 -2003+XG1-2015 and TSG T7007-2016
- Groove profiles according to lift system
- Perfect rated motor, use of high - performance permanent magnet, degree of protection IP41, insulation class 155 C (F), temperature control, motor with 2 times overload capacity
- Higher shaft load up to 65kN
- Certified as UCM protection element according to EN81-A3. CE certificate is available
- Inverter compatible measuring device, rigid coupling or intergrated. (e.g. ECN 1313; ERN 1387)
- Variable options regarding voltage, speed, torque, braking torque and traction sheave parameters
- Max. travelling height up to 120m

- 为乘客提供舒适的电梯运行体验
- 高效率，低能耗，低噪音
- 电机采用外转子结构；噪音低(48dB<62)，振动小(0.17mm/s<0.5)，运行平稳
- 采用块式制动器，体积小，重量轻，可靠性高，安装调试方便
- 型式试验满足GB7588 -2003+XG1-2015 要求，按TSG T7007-2016标准测试
- 根据电梯曳引系统设计绳槽
- 使用高效永磁，防护等级IP41，绝缘等级155(F)，带温度报警，两倍过载能力
- 更高的轴负荷，最高达 65kN
- 拥有符合EN81-A3规定的CE证书，可以作为防轿厢意外移动（UCM）保护元件
- 适用于变频器控制，带编码器测量，如ECN 1313; ERN 1387
- 经济节能，不同规格使用不同的电压，电流，转矩，制动力矩
- 推荐提升高度120m

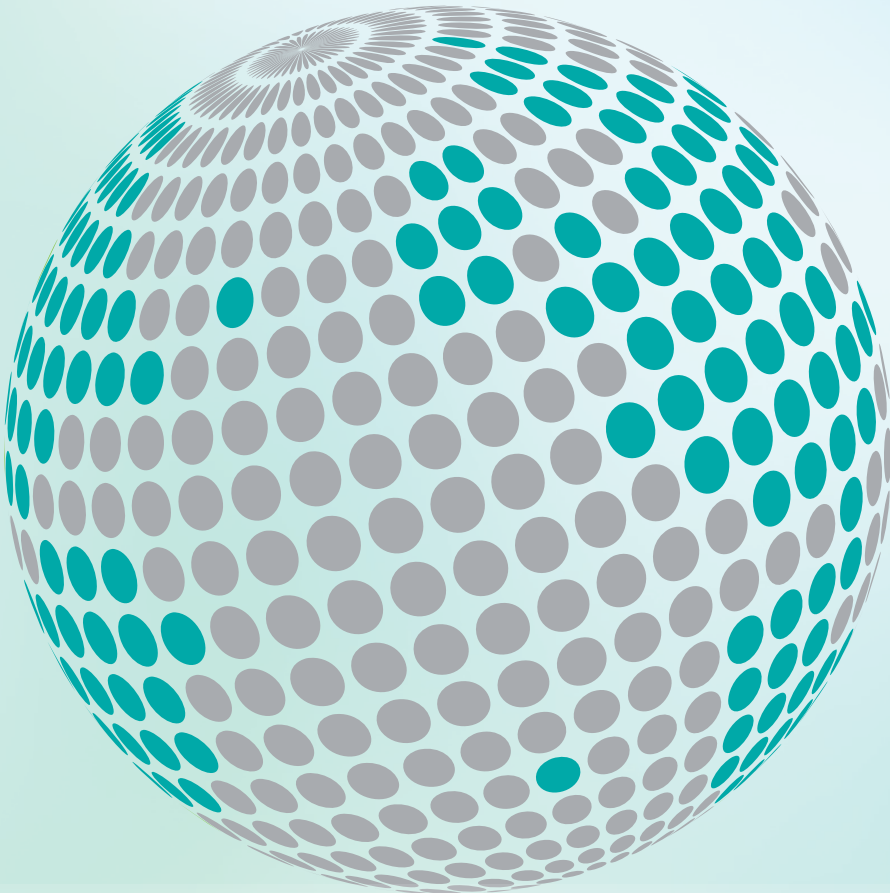


Content of supply 供货内容

- * Gearless synchronous external rotor drive with
 - Traction sheave
 - Braking system
 - Measuring system (encoder)
- * Mechancial evacuation system (option)
- * Remotely controlled bowden cable for brake (option)
- * Connection cable for encoder (option)
- * All technical documents necessary for approval and detail operation manual
- * 永磁同步外转子电机，包括：曳引轮、制动器、测量系统(编码器)
- * 盘车装置(选项)
- * 远程送闸装置(选项)
- * 编码器连接线(选项)
- * 所有的必要的技术文件以及详细的操作手册



提供电梯部件、模块和系统的全球合作伙伴



www.wittur.com



威梯电梯部件（苏州）有限公司 地址：中国江苏省吴江汾湖经济开发区库场路18号,215214 电话：+86-512-82072888 传真：+86-512-63220044 电邮：info.cn@wittur.com D-WSG-10-17-02-V0

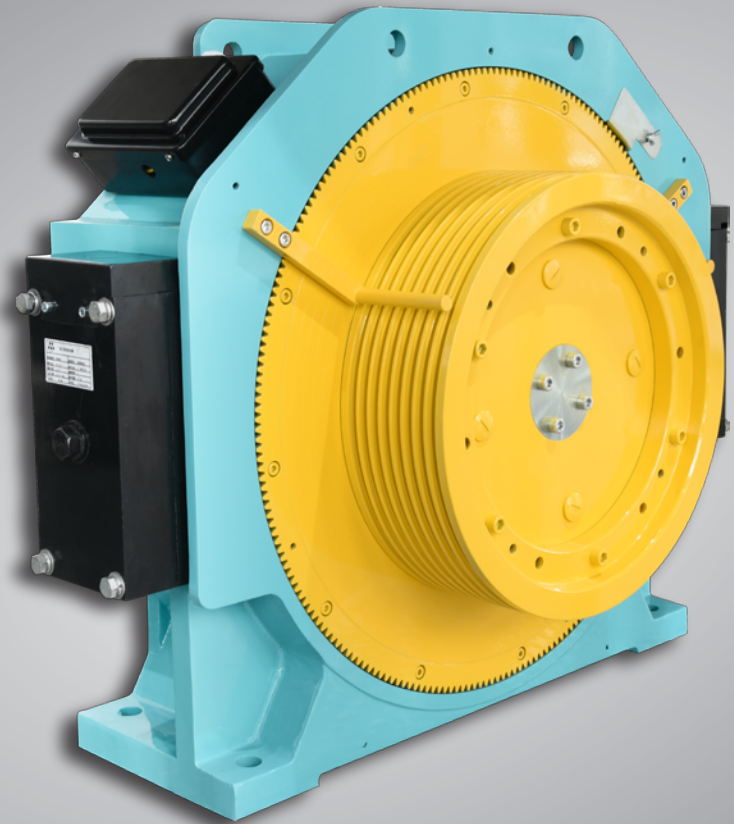
safety in motion™

www.wittur.com



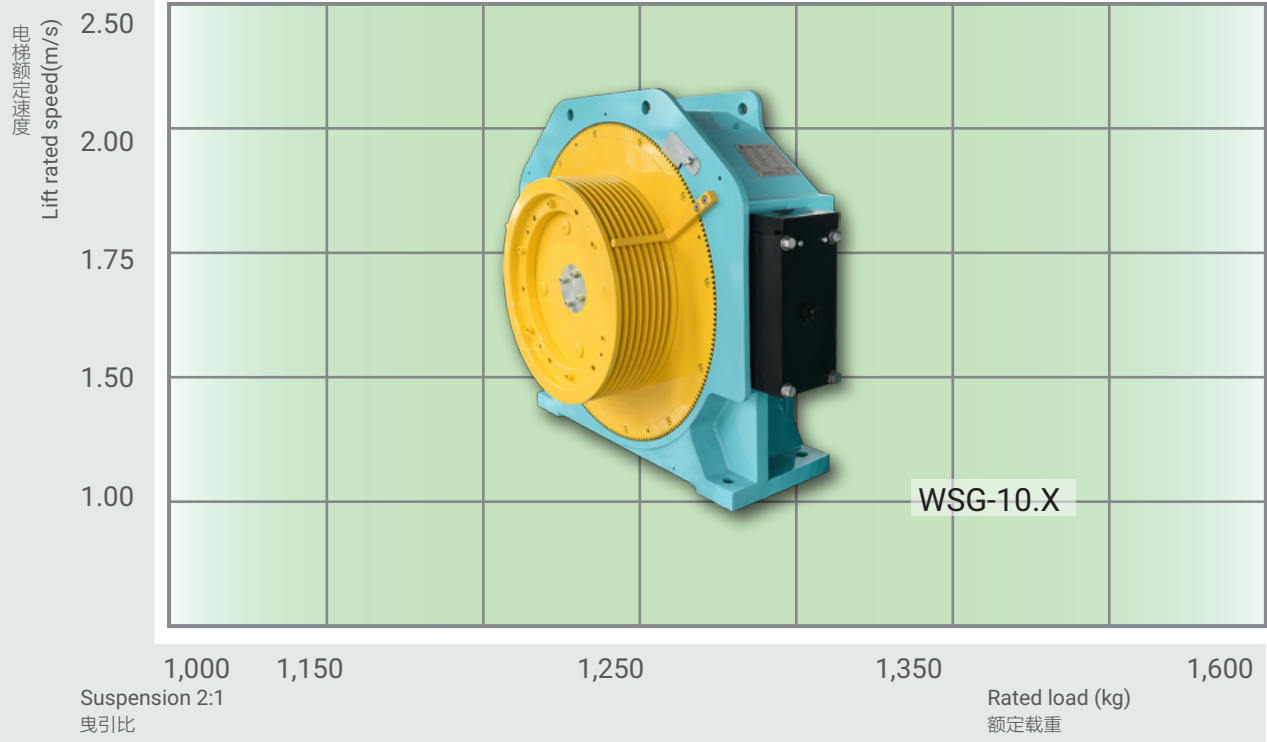
WSG-10

GEARLESS DRIVE SYSTEMS
无齿轮驱动系统



sematic®
a WITTUR brand

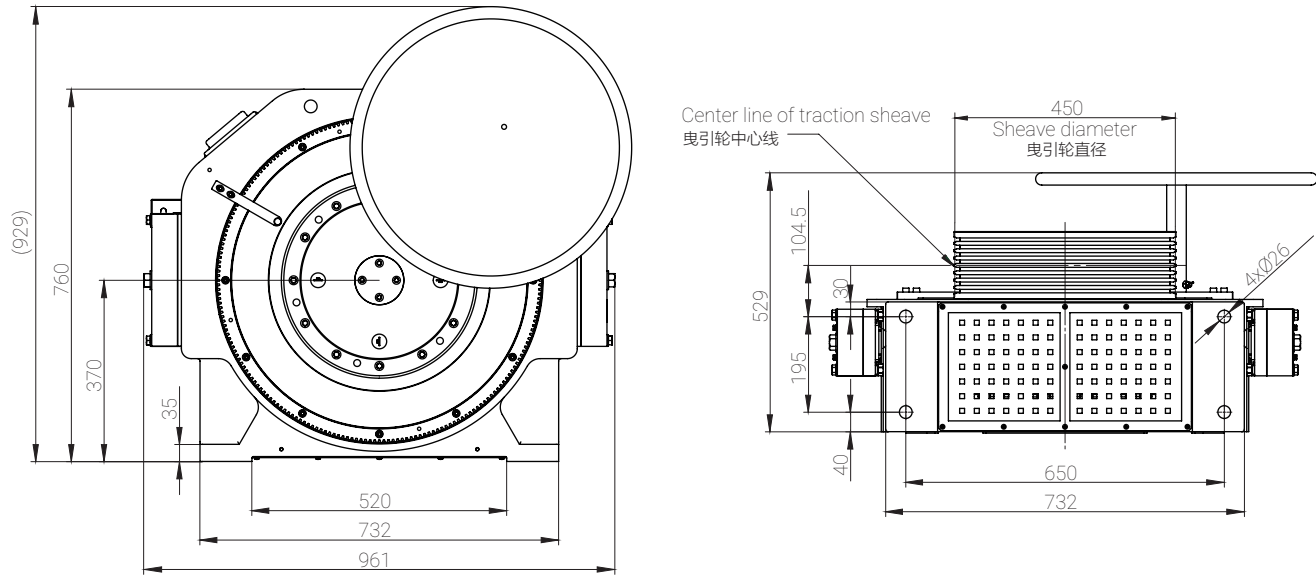
Product range WSG-10 series
WSG-10 系列产品覆盖范围



	WSG-10 SERIES			
	WSG-10.1	WSG-10.2	WSG-10.3	WSG-10.4
Rated loads up to (kg) 最大额定载重	1,150	1,250	1,350	1,600
Rated Torque(N.m) 额定转矩	870	940	1,010	1,200
Traction sheave Φ (mm) 曳引轮直径	450	450	450	450
Rated Speed (m/s) 额定速度	1.0 ... 2.5			
CTE test CTE型式试验	Y			
Grooves 槽数	8			
Motor Type 电机类型	Gearless PM synchronous 永磁同步			
Dimension (mm) 外观尺寸	961×374×760			
*Weight (kg) 净重	715	715	730	730
MRL solution 无机房方案	Applied 适用			
Installation 安装方式	ONLY vertical installation in machine room or top of the shaft 仅在井道顶部或机房垂直安装			

* The mechnical evacuation system isn't included, when we measure its weight and thickness.
计算重量和厚度尺寸时，未包括盘车齿轮等应急疏散设备。

Fixing dimension
安装尺寸图



Technical data for Brake
制动器技术参数

Motor Type 电机型号	Brake Type 制动器型号	Pull in voltage 吸合电压（V）	Holding voltage 保持电压（V）	Rate current 额定电流（A）	Brake torque 制动力矩（Nm）
WSG-10.1	WB4800	DC 110	DC 110	1.66	≥2×1,600
WSG-10.2	WB4800			1.66	≥2×1,600
WSG-10.3	WB5800			2	≥2×1,900
WSG-10.4	WB5800			2	≥2×1,900

* 75-80V DC for holding voltage is preferred for best performance in temperature rise
* 当保持电压为直流75-80V时，温升效果最佳

Technical data for traction machine
曳引机技术参数

Motor Type 电机型号		Synchronous/同步 32-pole/32极				
		WSG-10.1				
Rated Torque 额定转矩 S3-60%,240s/h	M _N (N.m)	870				
Sheave 曳引轮	ØDt (mm)	450				
Loads 载重	Q (kg)	up to 1,150kg 最大1,150kg				
Suspension 曳引比		2:1				
Motor current applicable to DC500-620V 适用于变频器母线电 压 DC 500-620V	V (m/s)	n _N [rpm]	P _N [kW]	I _N [A]	U _N [V]	F _N [Hz]
	1	85	7.8	18.2	340	22.7
	1.5	127	11.7	25.4	340	33.9
	1.75	149	13.6	29.6	340	39.7
	2	170	15.6	35.0	340	45.3
	2.5	212	19.4	41.7	340	56.5

Motor Type 电机型号		Synchronous/同步 32-pole/32极				
		WSG-10.2				
Rated Torque 额定转矩 S3-60%,240s/h	M _N (N.m)	940				
Sheave 曳引轮	ØDt (mm)	450				
Loads 载重	Q (kg)	up to 1,250kg 最大1,250kg				
Suspension 曳引比		2:1				
Motor current applicable to DC500-620V 适用于变频器母线电 压 DC 500-620V	V (m/s)	n _N [rpm]	P _N [kW]	I _N [A]	U _N [V]	F _N [Hz]
	1	85	8.4	19.7	340	22.7
	1.5	127	12.6	27.4	340	33.9
	1.75	149	14.7	31.9	340	39.7
	2	170	16.8	37.8	340	45.3
	2.5	212	21.0	45.0	340	56.5

Groove profile
曳引轮绳槽

8×Ø10/15
γ=25°
β=90°

Motor Type 电机型号		Synchronous/同步 32-pole/32极				
		WSG-10.3				
Rated Torque 额定转矩 S3-60%,240s/h	M _N (N.m)	1,0101				
Sheave 曳引轮	ØDt (mm)	450				
Loads 载重	Q (kg)	up to 1,350kg 最大1,350kg				
Suspension 曳引比		2:1				
Motor current applicable to DC500-620V 适用于变频器母线电 压 DC 500-620V	V (m/s)	n _N [rpm]	P _N [kW]	I _N [A]	U _N [V]	F _N [Hz]
	1	85	9.0	19.6	340	22.7
	1.5	127	13.5	27.4	340	33.9
	1.75	149	15.7	32.2	340	39.7
	2	170	18.0	37.4	340	45.3
	2.5	212	22.5	47.0	340	56.5

Groove profile
曳引轮绳槽

8×Ø10/15
γ=25°
β=90°

Motor Type 电机型号		Synchronous/同步 32-pole/32极				
		WSG-10.1				
Rated Torque 额定转矩 S3-60%,240s/h	M _N (N.m)	1,200				
Sheave 曳引轮	ØDt (mm)	450				
Loads 载重	Q (kg)	up to 1,600kg 最大1,600kg				
Suspension 曳引比		2:1				
Motor current applicable to DC500-620V 适用于变频器母线电 压 DC 500-620V	V (m/s)	n _N [rpm]	P _N [kW]	I _N [A]	U _N [V]	F _N [Hz]
	1	85	10.7	23.3	340	22.7
	1.5	127	16.0	32.5	340	33.9
	1.75	149	18.7	38.3	340	39.7
	2	170	21.4	44.4	340	45.3
	2.5	212	26.7	55.9	340	56.5

Groove profile
曳引轮绳槽

8×Ø10/15
γ=25°
β=90°