



WITTUR

EASY-SETUP

F-PACK

THE LIFT PACKAGE

Code	PM.8.004426.EN
Version	A01
Date	04. Apr 2023



[Download the Instructions](#)



No part of this publication may be reproduced or translated, even in part, without prior written permission from WITTUR.

Subject to change without notice!

info.wed@wittur.com
www.wittur.com

© Copyright WITTUR 2023

www.wittur.com

Lift Package

F-PACK

Easy-Setup

Code: PM.8.004426.EN

Date: 04. Apr 2023

Version: A01

Page: 2

1. Safety



- Read these instructions carefully before starting any work on the "Lift package".
- This brief guide covers only the most important steps for the first commissioning of the "Lift package".
- Before starting up the drive, you must read all the safety information in the full operating manual of the motor/inverter, which also contains operating and maintenance instructions for the drive components.
- **Qualified personnel !** Only qualified personnel are authorised to perform any planning, installation or maintenance work, and this must be done in accordance with the relevant instructions.
- **Unexpected motor start !** During first commissioning, an unexpected rotation of the traction sheave can happen at any time.

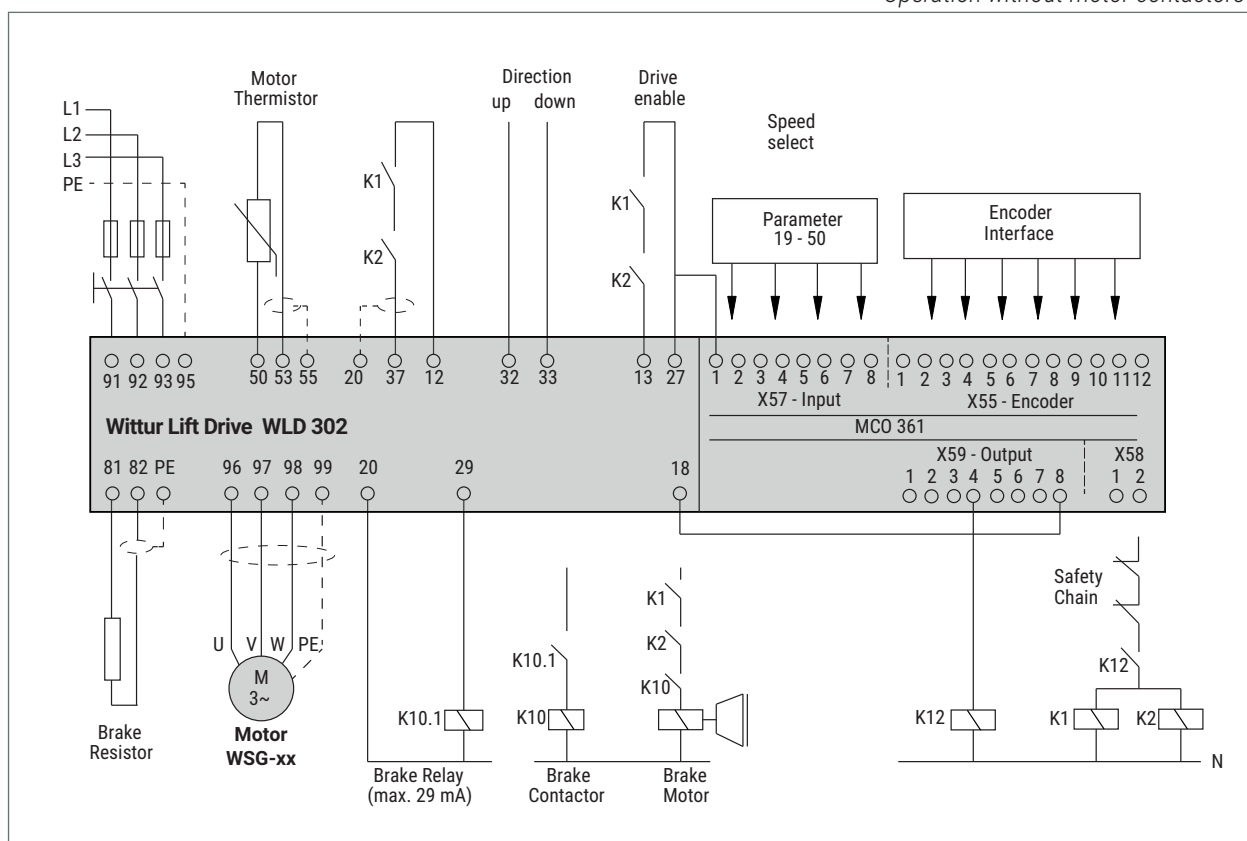


- **Risk of electric shock !** Never work under voltage. Operation of the drive components with removed protective covers or blank live parts is not allowed.
- **Risk of residual voltage – consider discharge duration !** Inverters include DC-link capacitors, which remain charged with fatal voltage after switching operation voltage off (minimum waiting time 15 Minutes).

2. Electrical installation

Wiring according to the operating instructions of the motor (WSG) and the inverter (WLD). Take care about a proper connection of the protective conductor and an EMC-compliant installation.

Operation without motor contactors



Lift Package

F-PACK

Easy-Setup

Code: PM.8.004426.EN
Datum: 04. Apr 2023
Stand: A01
Seite: 3

3. Motor data input

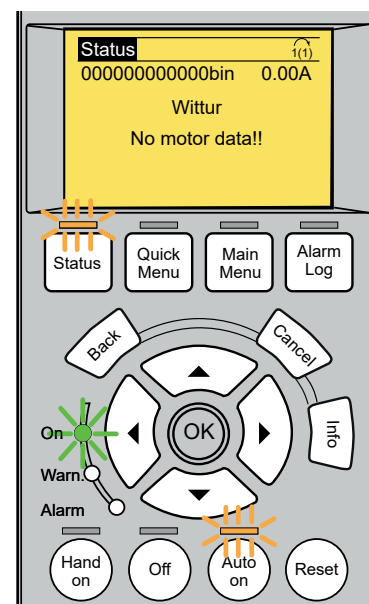
Different variants are available for the basic parameterization of the frequency inverter:

- Input the motor data using the drive code (refer 3.1)
- Input the motor data via the LCP module (refer 3.2)
- Input the data via the motor database (refer 3.2)
- Pre-parameterization of the inverter in the factory (Specify this when ordering the F- PACK.)

In the delivery state, the frequency inverter displays the message shown opposite after approx. 45 s after the supply voltage has been switched on.

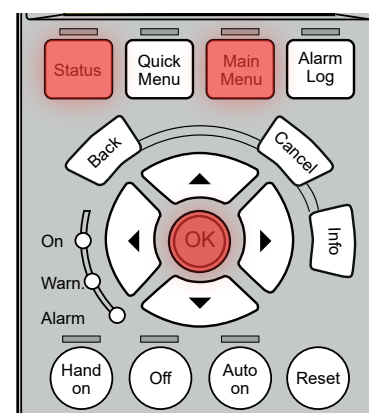


This display - *No motor data!* - only appears if the frequency inverter is in the delivery state. Reset the frequency inverter if necessary.



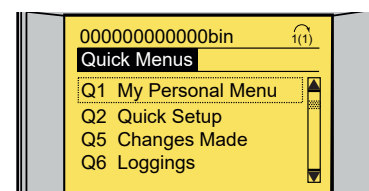
Resetting the frequency inverter to the delivery state

Press the „Status“, „Main Menu“ and „OK“ keys simultaneously when switching on the mains voltage. Keep the keys pressed until the fan starts and „INITIALIZING“ appears in the display. After approx. 2 min. the initialisation is completed and the above display appears - No motor data!



3.1. Input via drive code

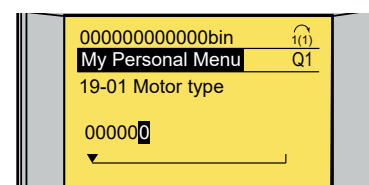
Press the button „Quick Menu“ and select „Q1 My Personal Menu“ with the button „OK“.



Use the Arrow button „▼“ to scroll to „19-01 Motor type“ and select it with „OK“.



The first menu item is the language selection, which can be adjusted if needed.



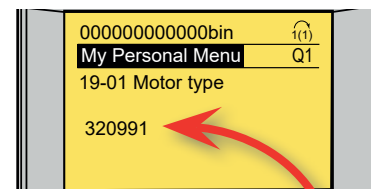
Lift Package

F-PACK

Easy-Setup

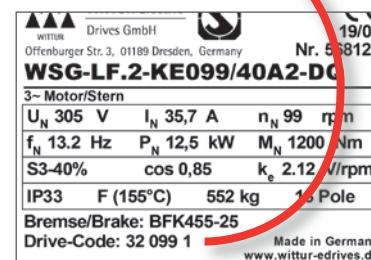
Code: PM.8.004426.EN
Date: 04. Apr 2023
Version: A01
Page: 4

Enter the drive-code from the motor rating plate in parameter 19-01 and confirm it with **"OK"**.



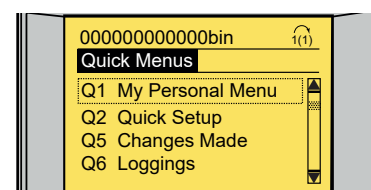
If the code is accepted, the display is not changed, otherwise the parameter 19-01 is set back to „0“.

- If the drive code is not accepted, select one of the following methods (see chapter 3.2/ 3.3 for entering the motor parameters).
- If the code is accepted, continue with section „4. Further inputs / 1st ride“.



3.2. Option 1: Input via LCP module

Press the **"Quick Menu"** key and then confirm the **"Q1 My Personal Menu"** selection by pressing the **"OK"** key.



Scroll to the parameters below using the arrow keys **"▼"**, **"▲"**. Select with the **"OK"** key and change as specified.

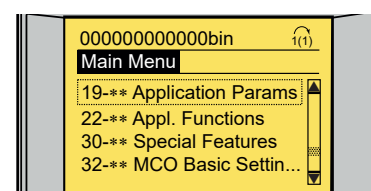
Parameter	Description	Value	
1-10	Motor construction	1 (PM, non salient SPM)	
1-24	Motor current	see motor nameplate	←
1-25	Motor nominal speed	see motor nameplate	←
1-26	Motor cont. rated torque	see motor nameplate	←
1-39	Motor poles	see motor nameplate	←

Encoder settings

Set the following parameters depending on the encoder used:

Parameter	Description	Value
32-00	Encoder	2 - SinCos
32-01	Encoder resolution	2048 (Default value for WSG- motors)

Press the key **"Main Menu"** and then enter the following parameters in the menu **"19-** Application Params"**:



Lift Package

F-PACK

Easy-Setup

Code: PM.8.004426.EN
Datum: 04. Apr 2023
Stand: A01
Seite: 5

Depending on the encoder used:

Parameter	Description	EnDat	SSI	BiSS-C
19-08	Absolute encoder type	2	1	3

Finally, the following parameters are entered:

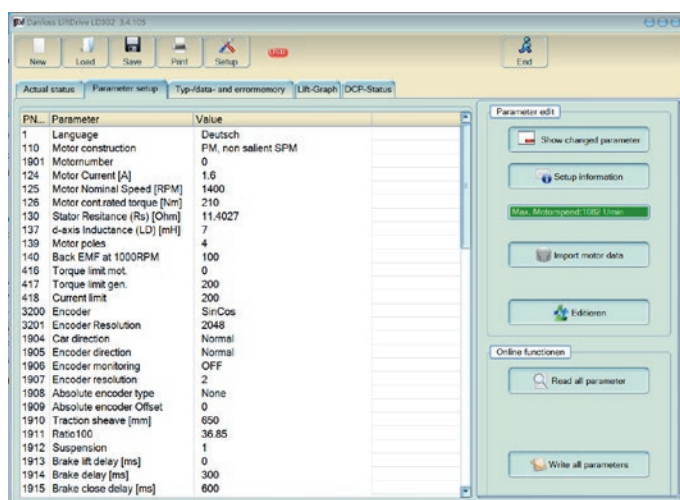
Parameter	Description	Input value
19-09	Absolute encoder Offset	-2 (Determination of the encoder offset during the next inspection run)
19-63	AMA	1 (Automatic parameter adjustment when the motor is at a standstill)

- Activate the AMA (Automatic Motor Adaptation) by starting an inspection run - without releasing the brakes of the motor. The motor is briefly energized (audible motor noise). When the AMA is successfully completed, parameter 19-63 is automatically reset to „0“.
- Continue with chapter „4. Further inputs / 1st ride“.

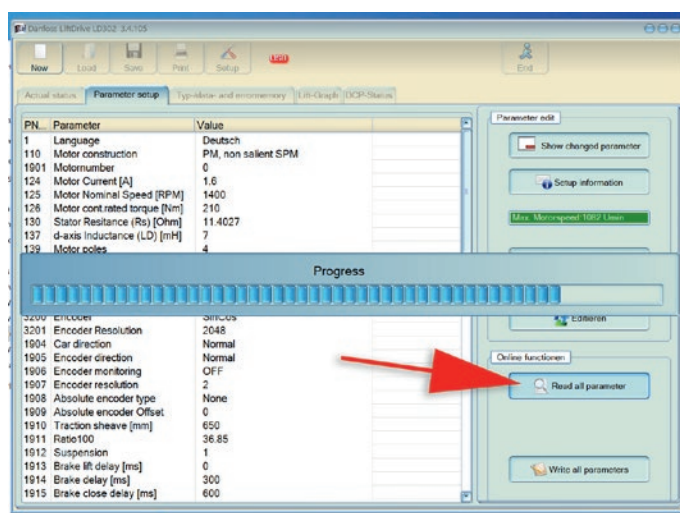
3.3. Option 2: Input via motor database

Another possibility to import the motor and encoder data into the frequency inverter is to use the Wittur Liftdrive software.

To do this, connect your PC via USB cable and open the WITTUR LiftDrive software.



Read all parameters from the frequency inverter.



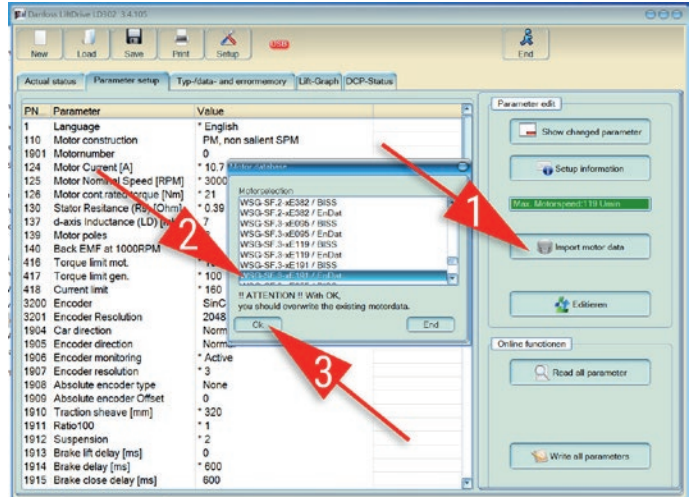
Lift Package

F-PACK

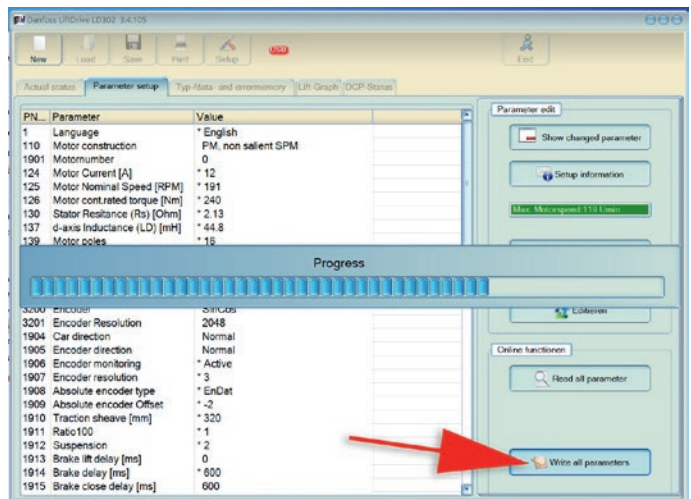
Easy-Setup

Code: PM.8.004426.EN
Date: 04. Apr 2023
Version: A01
Page: 6

Import the applicable motor/encoder from the motor database and confirm with **"Ok"**.



Write all parameters to the frequency inverter.



Lift Package

F-PACK

Easy-Setup

Code: PM.8.004426.EN
Datum: 04. Apr 2023
Stand: A01
Seite: 7

4. Further inputs / 1st ride

This sets the motor and encoder parameters. Now you can enter the other parameters of the elevator, such as traction sheave diameter, travel speeds, suspension, type of control, etc.

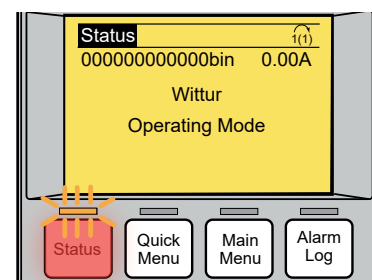
Important parameters are:

Parameter	Description	Input value
19-10	Traction sheave	
19-12	Suspension	
19-20	Maximum speed	
19-21	Nominal speed	
19-66	Control type	
weitere Parameter nach Bedarf		

For further details, please refer to the „Quick Guide WLD 302“.

Check status / 1st trip

- Press the **“Status”** key. The adjacent display appears.
- Then enable a run of the motor - including opening the brakes. To do this, set the enable signal, the direction of travel and the inspection speed. During the first travel, an offset angle determination is carried out once, which can be heard by a “small knock”. After completion of the travel, check parameter 19-09. The entered value “-2” has been overwritten by the determined offset angle of the encoder (number between “0” and “8192”).



Contact our support if you have any questions:

Contact:

www.wittur.com

info.wed@wittur.com

service.wed@wittur.com





WITTUR

YOUR GLOBAL PARTNER FOR COMPONENTS,
MODULES AND SYSTEMS IN THE ELEVATOR INDUSTRY



WITTUR.COM



ADVANCING THE ELEVATOR INDUSTRY