

WITTUR maintenance kits for elevator doors

THE BEST SOLUTION FOR YOUR MAINTENANCE ACTIVITIES
AND BUDGET!



THE BEST SOLUTION FOR YOUR MAINTENANCE ACTIVITIES AND BUDGET!

WITTUR MAINTENANCE KITS FOR ELEVATOR DOORS

Doors are some of the most used and abused components in an elevator.

They open and close hundreds of thousands of times annually, and are the only part of an elevator system that moves twice each time a car reaches a desired floor. Passengers keep them open when loading and unloading goods, stop them from closing to allow additional passengers in, luggage, wheelers and carts bump into them frequently. If we add ordinary wear and tear of their components, it is easy to understand why doors are involved in more than two thirds of all elevator maintenance calls!

Elevator doors require routine maintenance and adjustments to ensure that they open and close evenly. Damage to door components can cause significant performance issues, severe enough that a shutdown is inevitable or an entrapment becomes possible.

Preventive maintenance is the best solution to keep elevator doors in tip-top shape and avoids costly refurbishments or even unexpected callbacks.

In order to help elevator technicians performing preventive maintenance duties, Wittur has recently launched a series of maintenance kits prepared and configured according to our 100+ years of expertise in elevator door design and manufacturing.

The kits include all the door parts more subject to break under intense use and are the ideal tool for not only routine preventive maintenance but also for improving door system reliability and keeping their performance at their best over time.



MAIN CHARACTERISTICS

- Available for Selcom and Sematic best-sellers (Hydra, Pegasus, C-MOD, B-G, B-HR), each kit is packed with all the elevator door parts you need for a specific execution and configuration
- From experience of the product use and data collection of door operating parameters, the kits combine a good selection of parts (rollers, guide shoes, belt, ropes, switches, etc.) that are most likely to wear out after intense use over time in car or landing elevator doors
- Prepared according to our decades-long expertise in the elevator door business, the kits are ready to use and will help your planned maintenance activities, keeping intervention time and costs under control!

CUSTOMER BENEFITS

- Keep your elevator doors operating at maximum efficiency
- Reduce breakdowns / elevator downtimes and unexpected repairs
- Stock optimization: all elevator door parts in single boxes according to door model and execution
- Time reduction compared to the ordering of single parts
- Avoid costly refurbishments and premature breakdowns

THE BEST SOLUTION FOR YOUR MAINTENANCE ACTIVITIES AND BUDGET!

AVAILABLE KITS

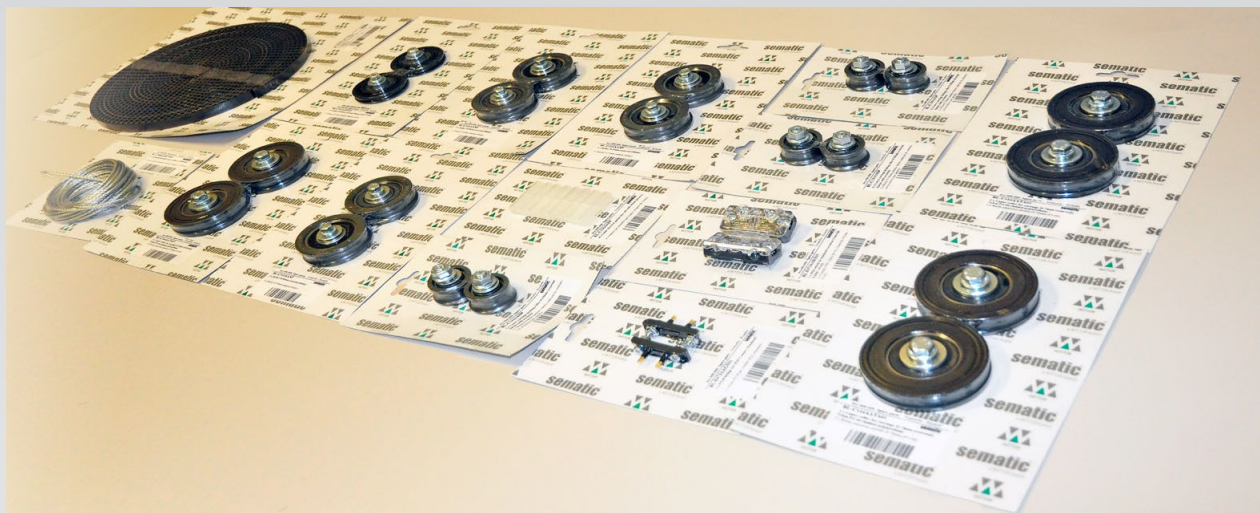
CODE	PRODUCT	TYPE	
1027440	HYDRA	01/C	2 panels
1027506	HYDRA	02/C	2 panels
1027449	HYDRA	11/R-L	2 panels
1027509	HYDRA	12/R-L	2 panels
1027468	HYDRA	31/R-L	3 panels
1027513	HYDRA	32/R-L	3 panels
1027475	HYDRA	41/C	4 panels
1027532	HYDRA	42/C	4 panels
1027538	PEGASUS	01/C	2 panels
1027572	PEGASUS	02/C	2 panels
1027548	PEGASUS	11/R-L	2 panels
1027577	PEGASUS	12/R-L	2 panels
1027562	PEGASUS	31/R-L	3 panels
1027579	PEGASUS	32/R-L	3 panels
1027568	PEGASUS	41/C	4 panels
1027582	PEGASUS	42/C	4 panels
W000ABDD01	B-G	Car Door	2/3 panels
W000ABDD02	B-G	Car Door	4/6 panels
W000ABDD03	C-MOD	Car Door	2 panels
W000ABDD04	C-MOD	Car Door	3/4 panels
W000ABDD05	B-HR2 TOP & MED	Car Door	1/2 panels
W000ABDD06	B-HR TOP & MED	Landing	1/2 panels
W000ABDD07	B-G	Car Door	2/3 panels
W000ABDD08	B-G	Car Door	4/6 panels
W000ABDD09	B-G	Landing	2/3 panels
W000ABDD10	B-G	Landing	4/6 panels
W000ABDD11	B-G	Landing	2/3 panels
W000ABDD12	B-G	Landing	4/6 panels
W000ABDD13	C-MOD	Landing	2 panels
W000ABDD14	C-MOD	Landing	3/4 panels
W000ABDD15	B-HR TOP & MED	Landing	1/2 panels



THE BEST SOLUTION FOR YOUR MAINTENANCE ACTIVITIES AND BUDGET!



INSIDE THE KIT: C-MOD - Kit Code W00ABDD03



ITEMS

DRIVE BELT KIT

WIRE ROPE KIT

ROLLERS FOR ROPE RETURN KIT

UPPER ROLLERS FOR CARRIAGE (BIG) KIT

UPPER ROLLERS FOR CARRIAGE (STANDARD) KIT

GUIDE SHOES KIT

LOWER KICKING ROLLERS FOR CARRIAGE KIT

IP20 CONTACT SWITCH KIT

CONTACT BRIDGE KIT

INSIDE THE KIT: HYDRA Ty. 11/R-L - Kit Code 1027449



ITEMS

TOWED ROLLER KIT

TRUCK ROLLER KIT

COUNTER ROLLER KIT

DOOR CONTACT KIT

CABLE-TIGHTENING CLAP KIT

PANEL SHOE KIT

THE BEST SOLUTION FOR YOUR MAINTENANCE ACTIVITIES AND BUDGET!



WITTUR MAINTENANCE KITS FOR ELEVATOR DOORS

SPARE PARTS SERVICE AND TOOLS

Ordering spare parts has never been so easy.

Our e-commerce portal (ecommerce.sematic.com) is available 24/7 and guide you through our parts offer: in a few clicks you can get useful information and prices for our overall spare parts commercial offer and eventually place orders as quick and easy as it can be.

Plan for the best maintenance visits by ordering everything you need now!

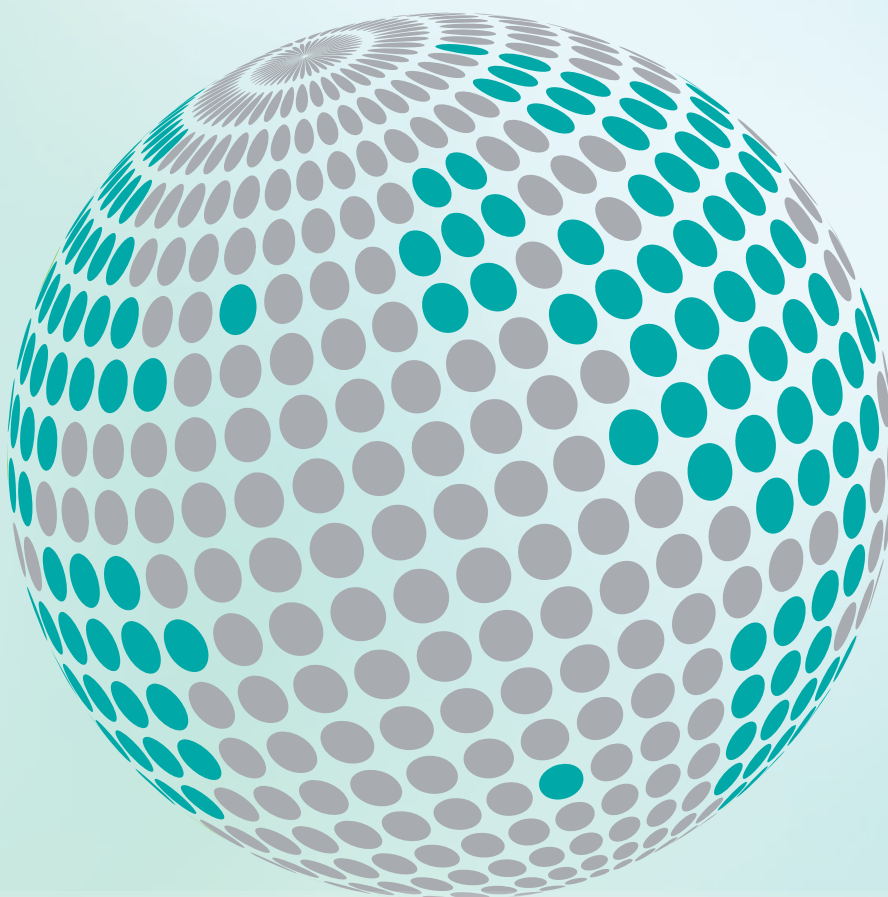
CONTACT INFO

Your local Wittur representatives are available with more information and can guide you through our spare parts offer.

Call or email us today and discover the best way to plan your next maintenance visits with everything you need at hand!



**YOUR GLOBAL PARTNER FOR COMPONENTS,
MODULES AND SYSTEMS IN THE ELEVATOR INDUSTRY**



wittur.com

More information
about Wittur Group
available on-line.



SELCOM®
a WITTUR brand

Liftmaterial
a WITTUR brand

sematic®
a WITTUR brand