

技术手册



# 2000 B-G

Code	TC. 2. 004483. ZH
Version	C 2021年4月21日
Edition	2007年5月8日
SEM ID	921-210-000

型号: K-S 2L-R



未获得 WITTUR 的事先书面许可，不得复制或翻译本出版物的任何部分。

如有更改，恕不另行通知！

info@wittur.com  
www.wittur.com

© Copyright WITTUR 2021

safety in motion™



## 目录

思迈特 2000 B-G 全系列门.....	5
思迈特 2000 B-G 全系列门 SHIELD PRO 选项.....	6
轿门正面、俯视图和侧视图 - L.....	7
轿门操作详解- L.....	8
轿门正面、俯视图和侧视图 - R.....	9
轿门操作详解 - R.....	10
门机安装示意图（标准马达）.....	11
门机安装示意图（B105AASX 马达）.....	12
门机固定支架的安装范围.....	13
适用于 $TB < 1450$ 的轿门挡板.....	14
适用于 $1450 < TB \leq 2000$ 的轿门挡板.....	15
轿门侧光幕地坎应用图.....	16
门探 3D (cod. 674/774).....	17
标准层门 $TB=1000$ 的正面和侧视图 - L.....	18
标准层门 $TB=1000$ 的正面和侧视图 - R.....	19
标准层门 $1000 < TB \leq 1600$ 的正面和侧视图 - L.....	20
标准层门 $1000 < TB \leq 1600$ 的正面和侧视图 - R.....	21
标准层门 $1600 < TB \leq 2000$ 的正面和侧视图 - L.....	22
标准层门 $1600 < TB \leq 2000$ 的正面和侧视图 - R.....	23
轿厢和层门的联结和安装 - L.....	24
轿厢和层门的联结和安装 - R.....	25
层门安装支架 - 标准.....	26
选配的安裝支架可根据要求提供.....	27
铝制地坎支架安装示意图.....	28
关闭铝制轨道的额外曲线.....	29
钢制导轨支架安装示意图.....	30
钢/不锈钢地坎的关闭额外曲线.....	31
全角支架 $TB=1000$ - 载重量 $< 4000$ Kg.....	32
全角支架 $1000 < TB \leq 1600$ - 载重量 $< 4000$ Kg.....	33
全宽用于角支架 $1000 < TB \leq 1600$ - 载重量 $\geq 4000$ Kg.....	34
全角支架 $1600 < TB \leq 2000$ - 载重量 $< 4000$ Kg.....	35
全角支架 $1600 < TB \leq 2000$ - 载重量 $\geq 4000$ Kg.....	36
用于带载重量 $\geq 4000$ Kg - $1000 < TB < 1600$ 的电梯全角支架的安装点示意图.....	37
用于带载重量 $\geq 4000$ Kg - $1600 < TB < 2000$ 的电梯的全宽角支撑安装点示意图.....	38
完整铝制地坎 - L.....	39
完整铝制地坎 - R.....	40
自立式钢/不锈钢导轨 $1000 \leq TB < 1200$ - L.....	41
自立式钢/不锈钢导轨 $1000 \leq TB < 1200$ - R.....	42

目录	
自立式钢/不锈钢导轨 1200≤TB<2000 - L.....	43
自立式钢/不锈钢导轨 1200≤TB<2000 - R.....	44
高强度地坎 - L.....	45
有框玻璃 .....	46
有框玻璃 - SHIELD PRO.....	47
全玻璃 .....	48
有框玻璃门板的结构.....	49
全玻璃门板的结构.....	50
层门和门口结构显性包层.....	51
层门关门装置应用范围.....	52
最小楼层间距.....	54
打浆曲线示意图.....	55

思迈特 2000 B-G 全系列门

类型	2扇门左开/右开	3扇门左开/右开	中分2扇门	中分4扇门	六扇中分
净开门宽	TH				
1000	2000-3000	2000-2500	2000-3000	2000-2300	-
1100	2000-3000	2000-2500	2000-3000	2000-2300	-
1200	2000-3000	2000-3000	2000-3000	2000-2300	-
1300	2000-3000	2000-3000	2000-3000	2000-3000	-
1400	2000-3500	2000-3500	2000-3500	2000-3000	2000-2300
1500	2000-3500	2000-3500	2000-3500	2000-3000	2000-2300
1600	2000-3500	2000-3500	2000-3500	2000-3000	2000-2300
1700	2000-3500	2000-3500	2000-3500	2000-3000	2000-2500
1800	2000-3500	2000-3500	2000-3500	2000-3000	2000-2500
1900	2000-3500	2000-3500	2000-3500	2000-3500	2000-2500
2000	2000-3500	2000-3500	2000-3500	2000-3500	2000-3000
2100	-	-	-	2000-3500	2000-3000
2200	-	-	-	2000-3500	2000-3000
2300	-	-	-	2000-3500	2000-3000
2400	-	-	-	2000-3500	2000-3000
2500	-	-	-	2000-3500	2000-3500
2600	-	-	-	2000-3500	2000-3500
2700	-	-	-	2000-3500	2000-3500
2800	-	-	-	2000-3500	2000-3500
2900	-	-	-	2000-3500	2000-3500
3000	-	-	-	2000-3500	2000-3500
3100	-	-	-	2000-3500	2000-3500
3200	-	-	-	2000-3500	2000-3500
3300	-	-	-	2000-3500	2000-3500
3400	-	-	-	2000-3500	2000-3500
3500	-	-	-	2000-3500	2000-3500

思迈特 2000 B-G 全系列门 SHIELD PRO 选项

类型	2扇门左开/右开	中分2扇门	中分4扇门
净开门宽	TH		
800*	2000-2300	2000-2300	2000-2300
900*	2000-2300	2000-2300	2000-2300
1000	2000-2300	2000-2300	2000-2300
1100	2000-2300	2000-2300	2000-2300
1200	2000-2300	2000-2300	2000-2300
1300	2000-2300	2000-2300	2000-2300
1400	2000-2300	2000-2300	2000-2300
1500	—	—	2000-2300
1600	—	—	2000-2300
1700	—	—	2000-2300
1800	—	—	2000-2300
1900	—	—	2000-2300
2000	—	—	2000-2300
2100	—	—	2000-2300
2200	—	—	2000-2300
2300	—	—	2000-2300
2400	—	—	2000-2300
2500	—	—	2000-2300
2600	—	—	2000-2300
2700	—	—	2000-2300
2800	—	—	2000-2300

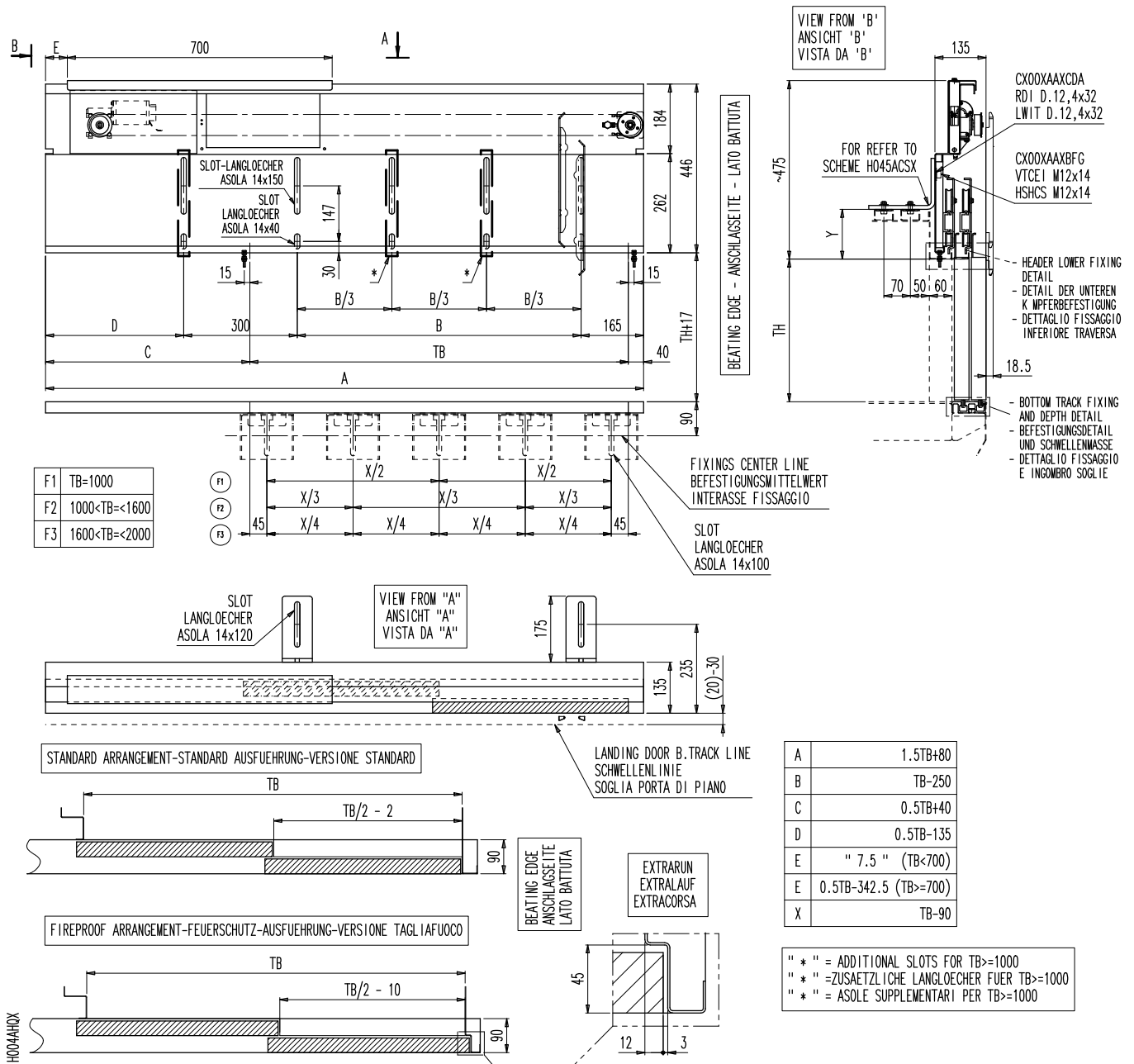
! \*基于定制

! 仅层门

## 轿门

K 2L

轿门正面、俯视图和侧视图 - L

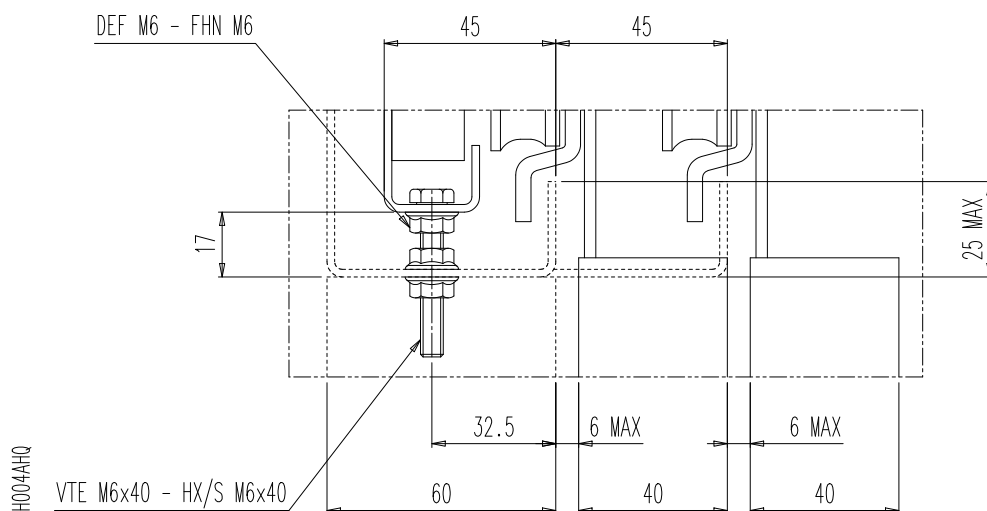


## 轿门

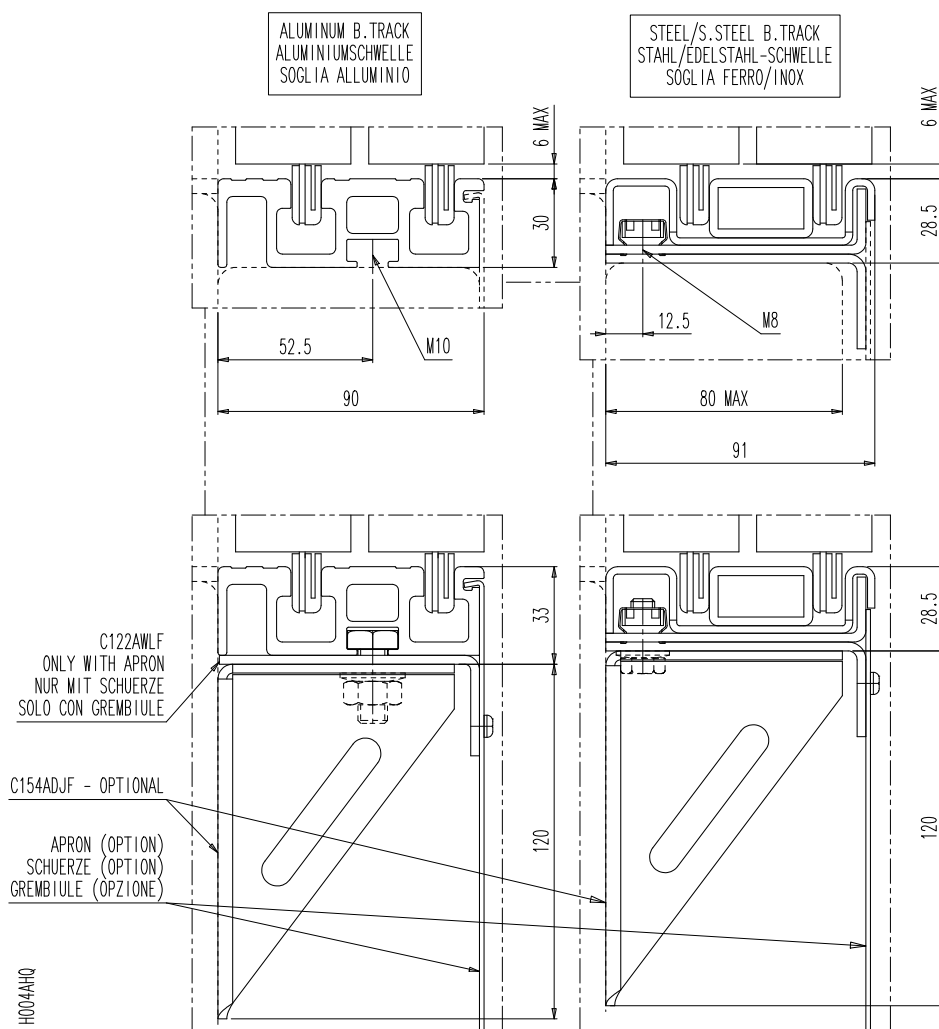
K 2L

## 轿门操作详解- L

## 门头下部安装详解



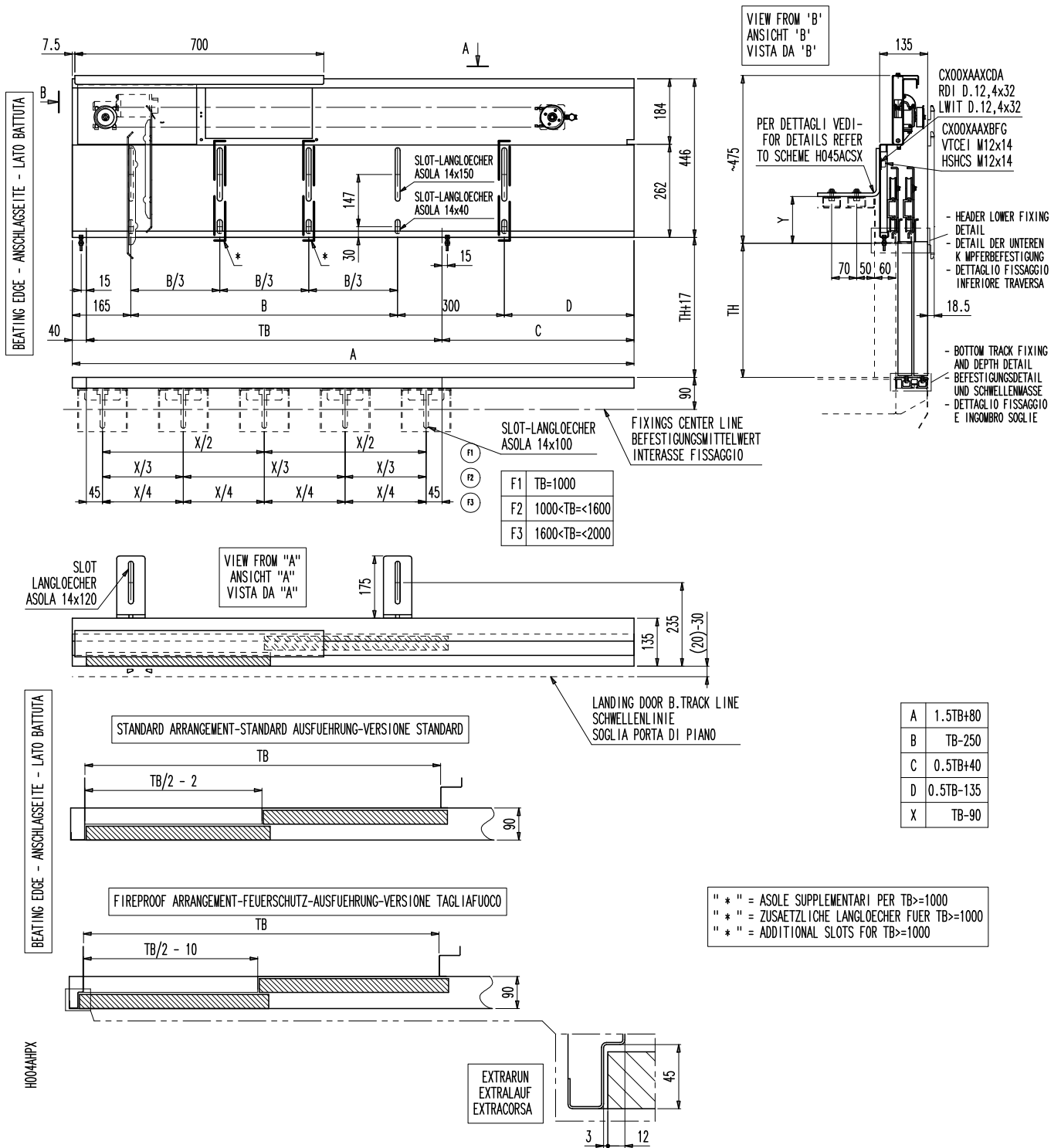
## 地坎安装和深度详解



## 轿门

K 2R

轿门正面、俯视图和侧视图 - R

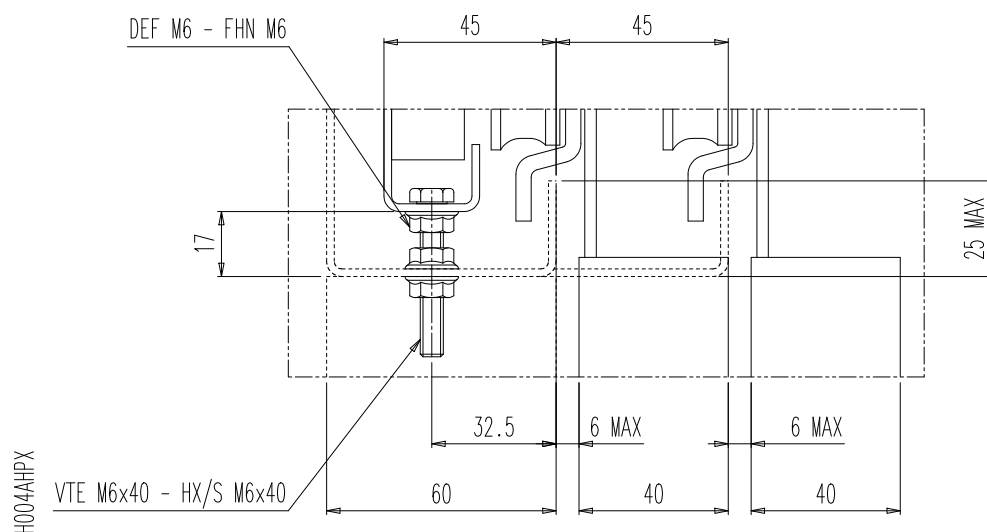


## 轿门

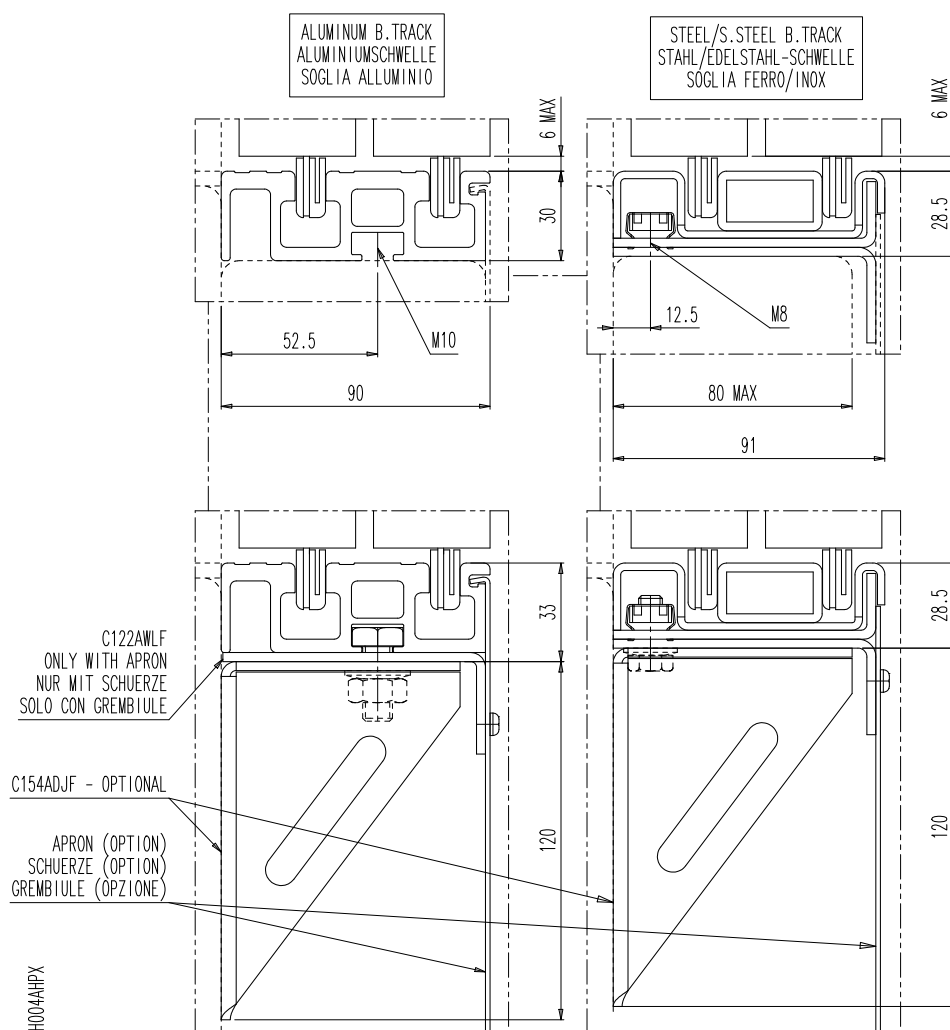
K 2R

轿门操作详解 - R

门头下部固定详解



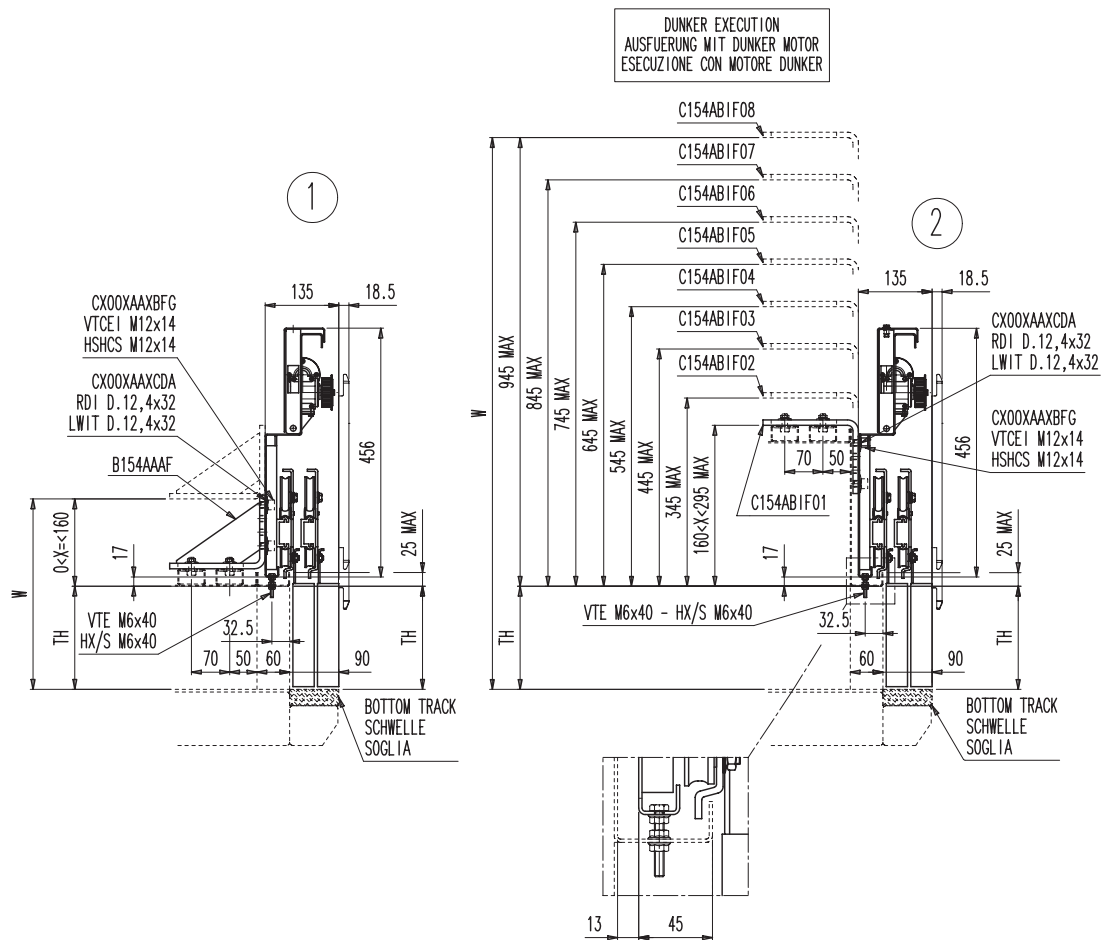
地坎安装和深度细节



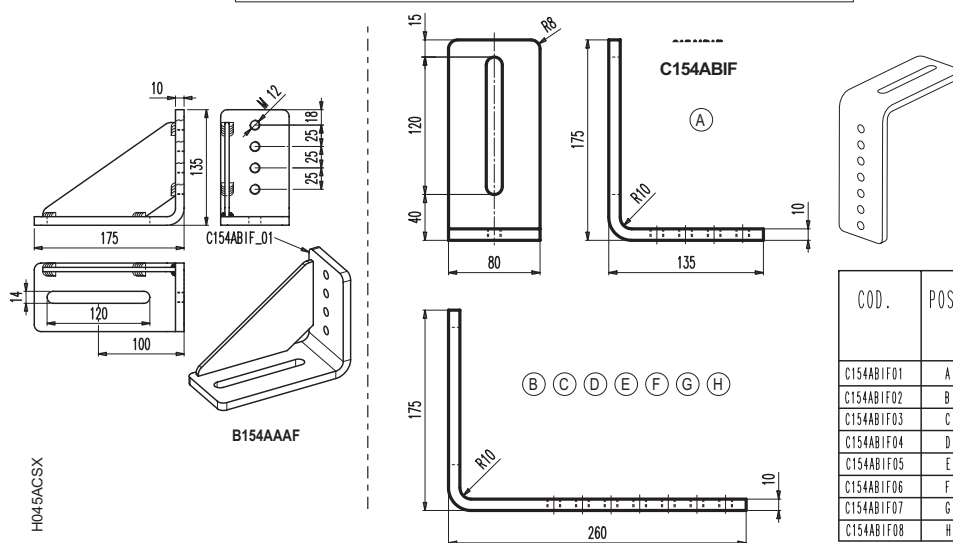
## 安装示意图

K 2L-R

门机安装示意图 (标准马达)



- \* W \* Maximum external cabin roof height with car fixings
- \* W \* Maximale aussere Kabinenhöhe einschliesslich der Kabinenkaempferbefestigungen
- \* W \* Altezza massima esterna di cabina incluse le canaline di fissaggio operatore



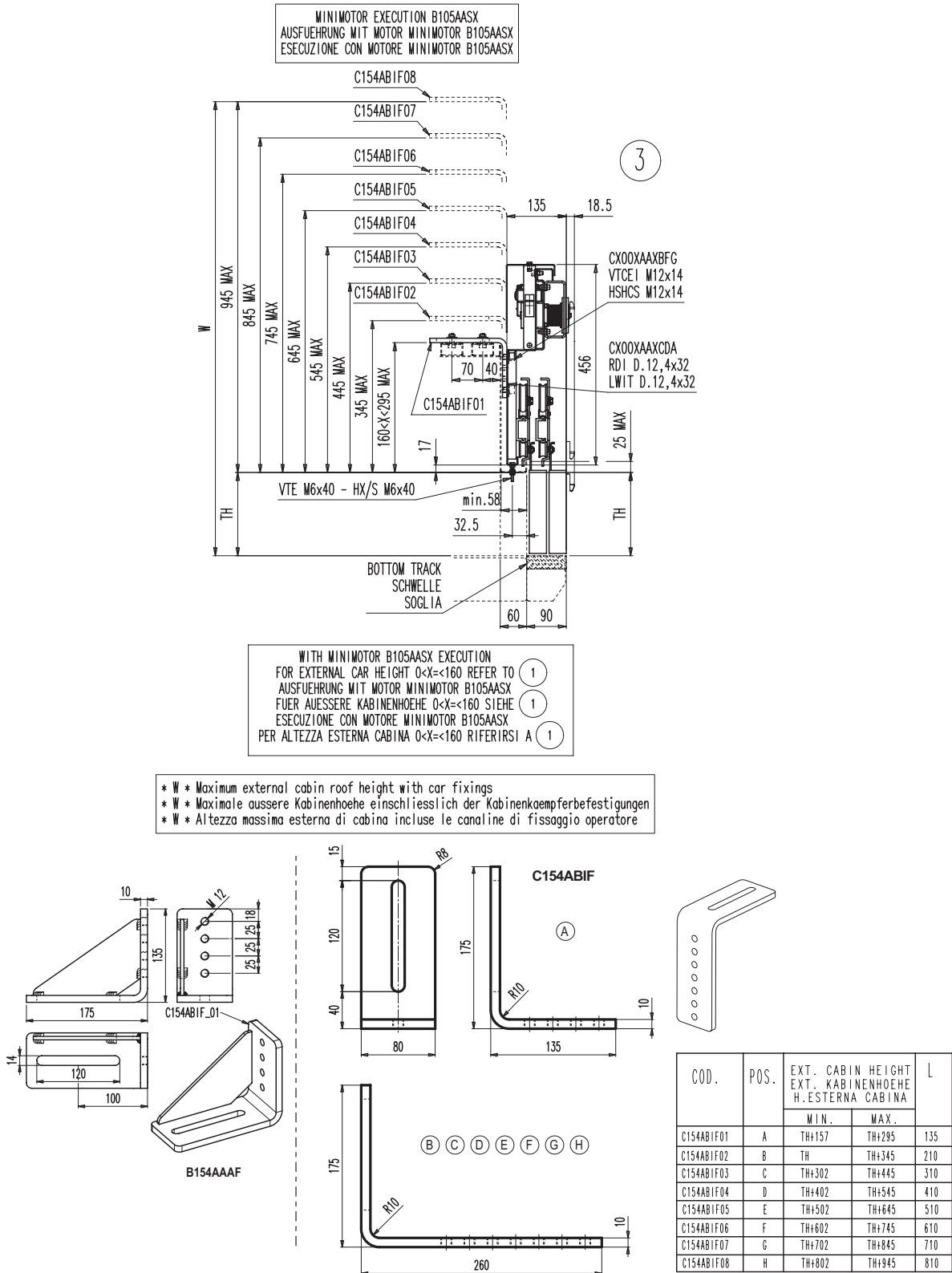
COD.	POS.	EXT. CABIN HEIGHT EXT. KABINENHOEHE H. ESTERNA CABINA		L
		MIN.	MAX.	
C154ABIF01	A	TH+157	TH+295	135
C154ABIF02	B	TH	TH+345	210
C154ABIF03	C	TH+302	TH+445	310
C154ABIF04	D	TH+402	TH+545	410
C154ABIF05	E	TH+502	TH+645	510
C154ABIF06	F	TH+602	TH+745	610
C154ABIF07	G	TH+702	TH+845	710
C154ABIF08	H	TH+802	TH+945	810

安装示意图

K 2L-R

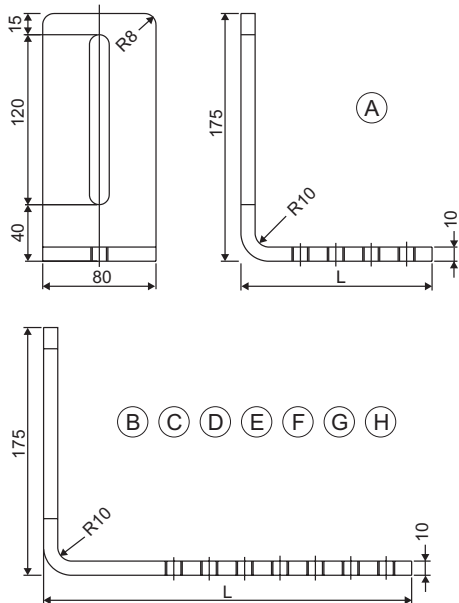
门机安装示意图 (B105AASX 马达)

选件

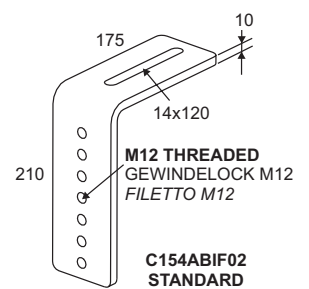
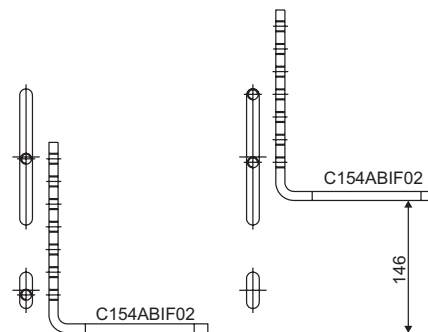
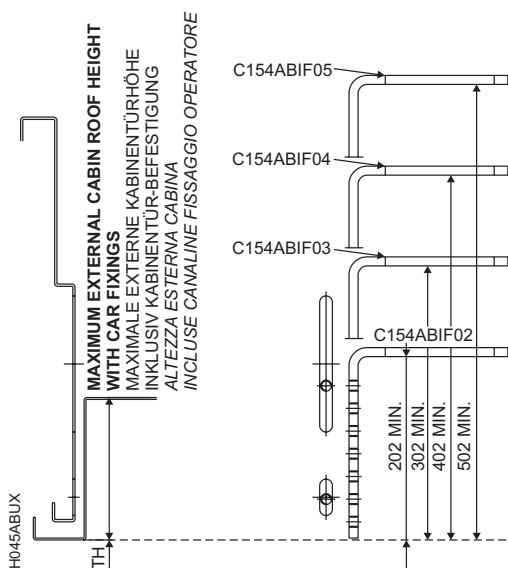
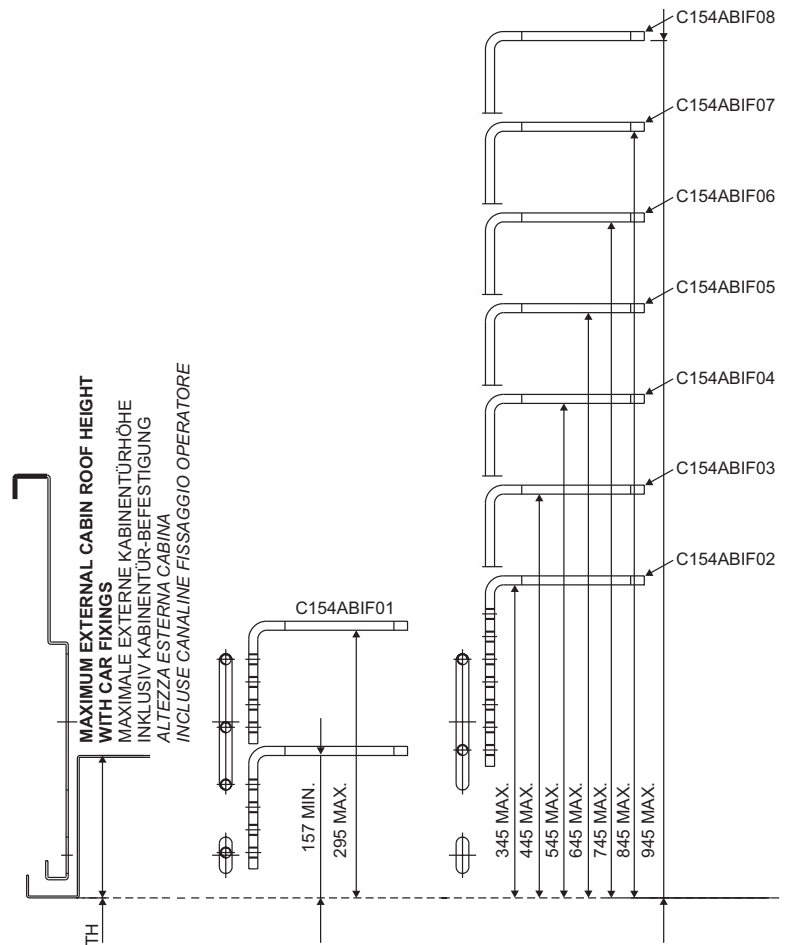


## 门机固定支架的安装范围

**FIXING BRACKET FOR CAR DOOR OPERATOR**  
**KABINENTÜRANTRIEBSWINKEL**  
**STAFFA FISSAGGIO OPERATORE PORTA DI CABINA**



COD.	POS.	EXT. CABIN HEIGHT EXT. KABINENHÖHE H. ESTERNA CABINA		L
		MIN.	MAX.	
C154ABIF01	A	TH+157	TH+295	135
C154ABIF02	B	TH	TH+345	210
C154ABIF03	C	TH+302	TH+445	310
C154ABIF04	D	TH+402	TH+545	410
C154ABIF05	E	TH+502	TH+645	510
C154ABIF06	F	TH+602	TH+745	610
C154ABIF07	G	TH+702	TH+845	710
C154ABIF08	H	TH+802	TH+945	810

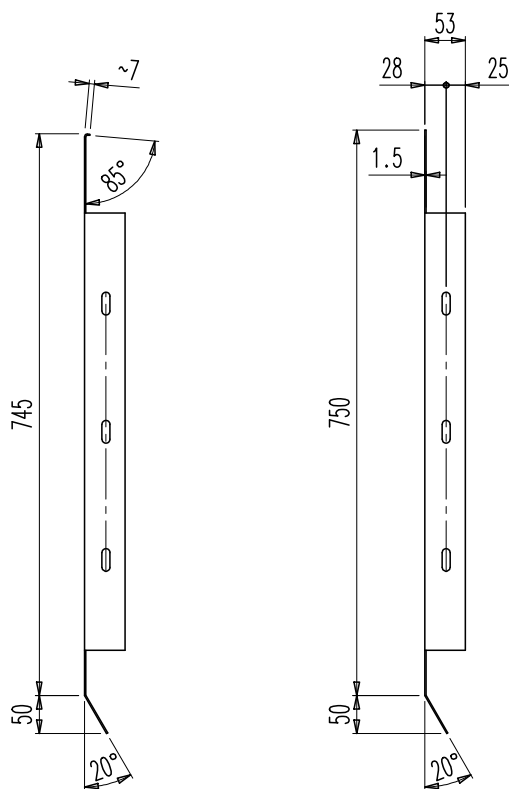


## 挡板 K

K 2L-R

适用于 TB=&lt;1450 的轿门挡板

选项



C094AADF 02

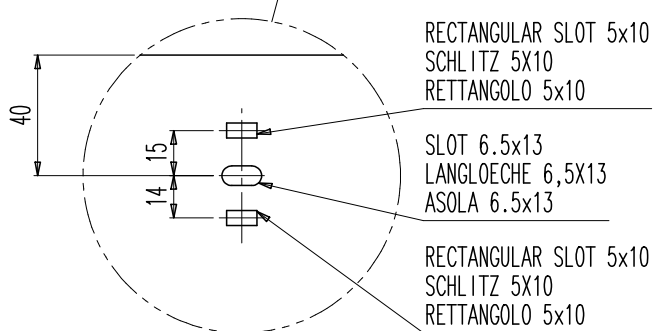
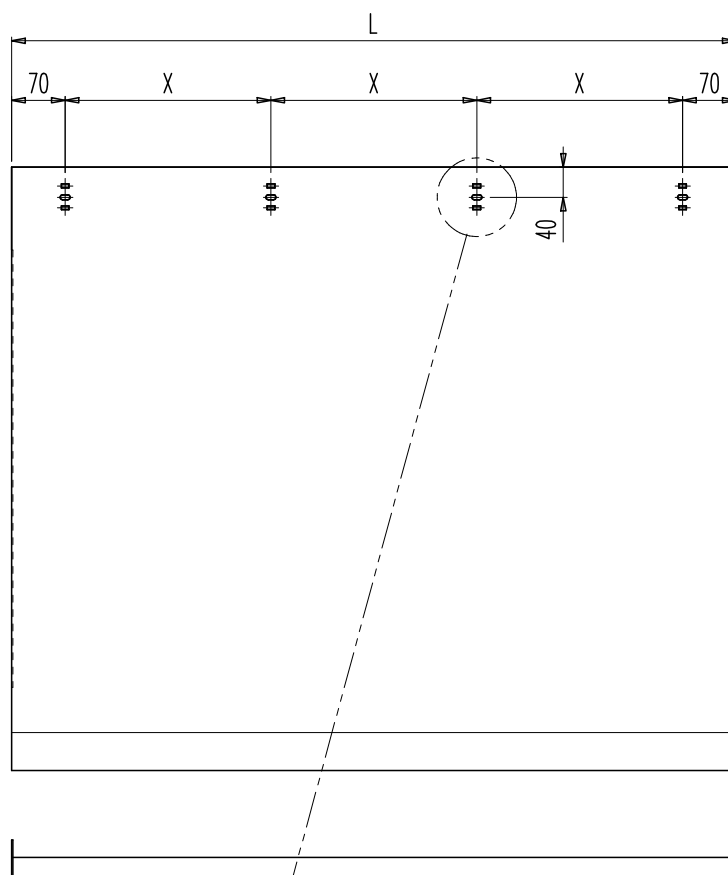
C094AADF 01

- C094AADF 01
- FOR ALUMINIUM BOTTOM TRACK  
FÜR ALUMINIUM SCHWELLE  
PER SOGLIA ALLUMINIO
  - FOR STEEL, STAINLESS-STEEL BOTTOM TRACK  
FÜR STAHL/EDELSTAHL SCHWELLE  
PER SOGLIA FE/INOX
  - FOR EXTRUDED MANGANESE-BRONZE BOTTOM TRACK  
FÜR SCHWELLE AUS GEZOGENEM MESSING  
PER SOGLIA IN OTTONE ESTRUSO

C094AADF 02

- FOR FULL ALUMINIUM BOTTOM TRACK  
FÜR SCHWELLE ALUMINIUM INTEGRAL  
PER SOGLIA ALLUMINIO INTEGRALE

C094AADF



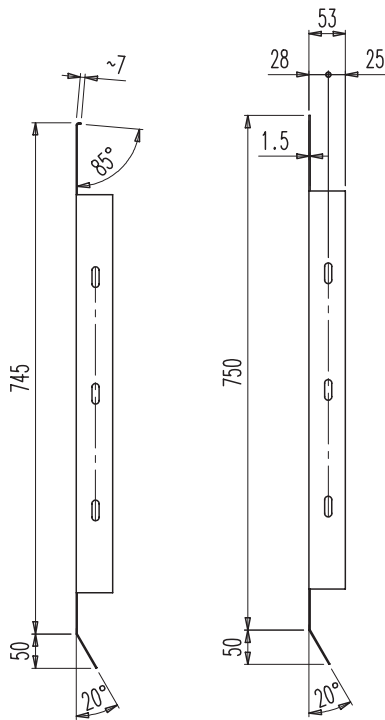
QUANTITY STÜCKZAHL QUANTITÀ	TB	X	L
1 PIECE 1 STÜCK 1 PEZZO	1000<TB=<1450	(TB-90)/3	TB+50

## 挡板 K

K 2L-R

适用于  $1450 < TB \leq 2000$  的轿门挡板

选件



C094AADF 02

C094AADF 01

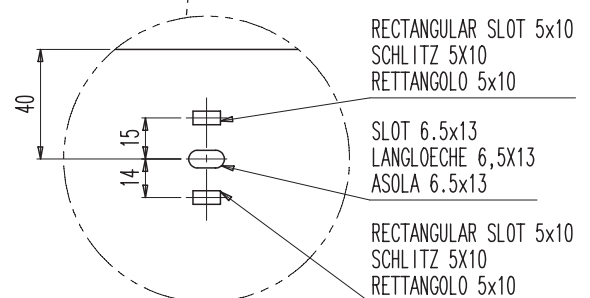
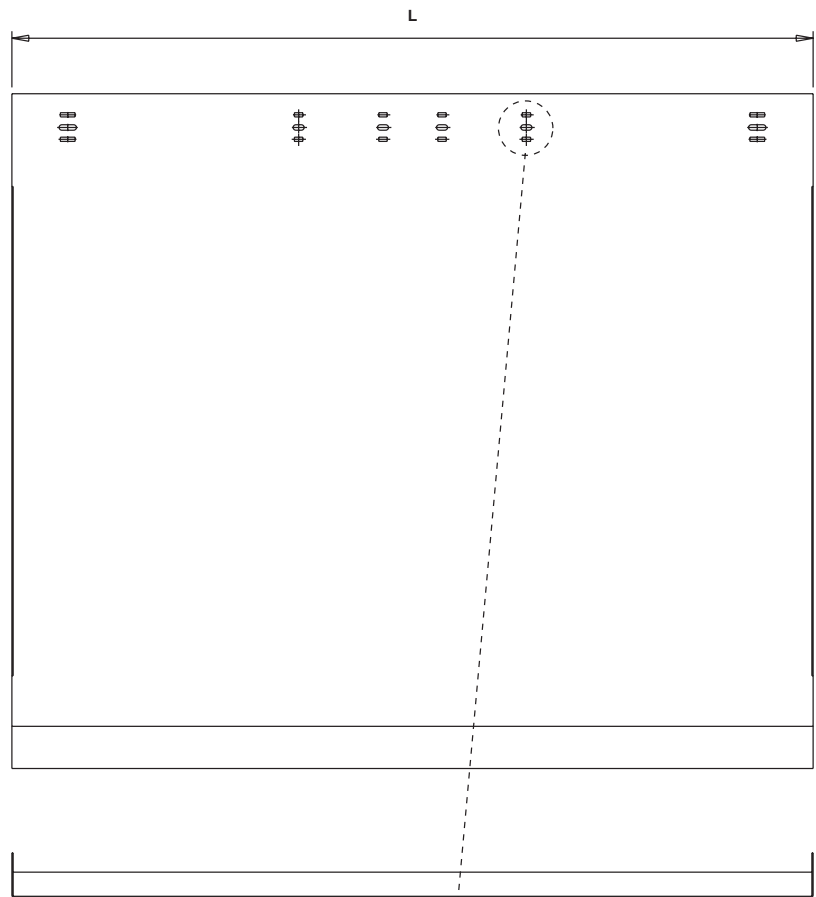
C094AADF 01

- FOR ALUMINIUM BOTTOM TRACK  
FÜR ALUMINIUM SCHWELLE  
PER SOGLIA ALLUMINIO
- FOR STEEL, STAINLESS-STEEL BOTTOM TRACK  
FÜR STAHL/EDELSTAHL SCHWELLE  
PER SOGLIA FE/INOX
- FOR EXTRUDED MANGANESE-BRONZE BOTTOM TRACK  
FÜR SCHWELLE AUS GEZOGENEM MESSING  
PER SOGLIA IN OTTONE ESTRUSO

C094AADF 02

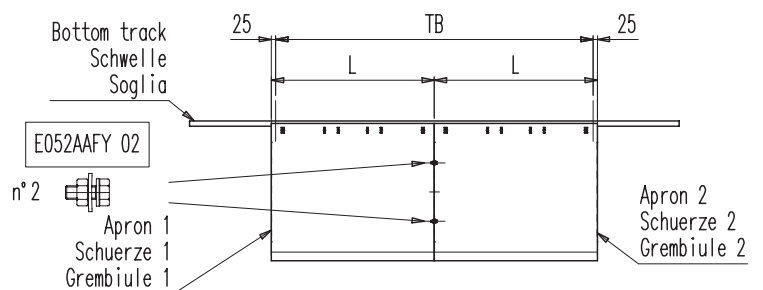
- FOR FULL ALUMINIUM BOTTOM TRACK  
FÜR SCHWELLE ALUMINIUM INTEGRALE  
PER SOGLIA ALLUMINIO INTEGRALE

QUANTITY STÜCKZAHL QUANTITA'	TB	L
2 PIECE 2 STÜCK 2 PEZZO	$1450 < TB \leq 1600$	$TB/2 + 25$
	$1600 < TB \leq 2000$	$TB/2 + 25$



- WARNING: WITH  $TB > 1450$  THE APRON WILL BE SUPPLIED IN TWO EQUAL PARTS TO BE JOINED BY TWO E052AAFY02 BOLTS.
- ACHTUNG: FÜR  $TB > 1450$  WIRD DIE SCHUERZE IN ZWEI GLEICHEN TEILEN UND MIT ZWEI SCHRAUBEN (E052AAFY02) GELIEFERT
- ATTENZIONE: PER  $TB > 1450$  PREVEDERE LA FORNITURA DEL GREMBIULE IN DUE PEZZI UGUALI E FORNIRE NR.2 BULLONI E052AAFY02

C049AAGF



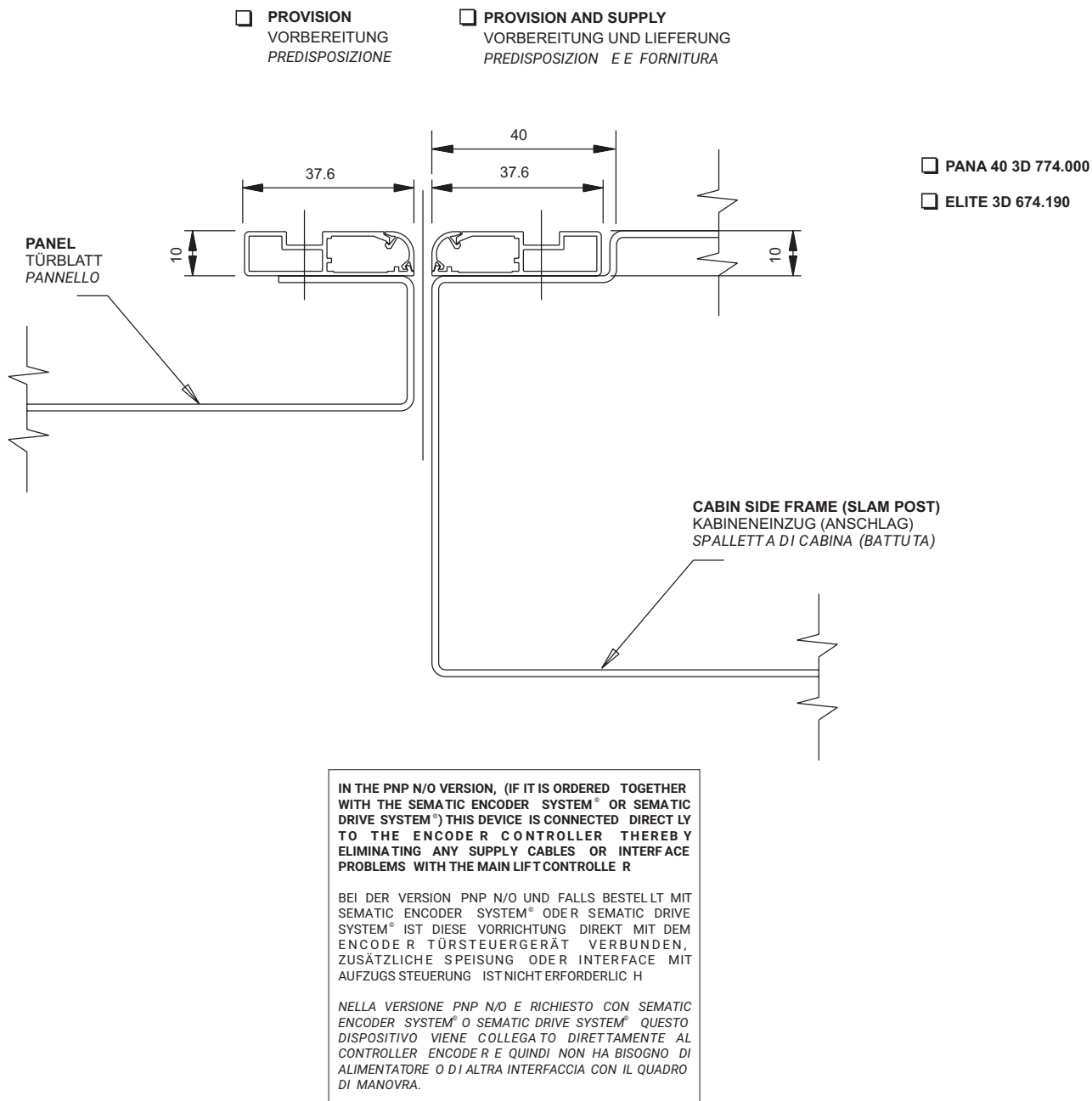


门探 3D

2L-R

门探 3D (COD. 674/774)

选件



**NOTE:** The cabin side frame with its suitable recess is to be foreseen for fire rated doors with extrarun and for standard doors with extra run (H001AABX).

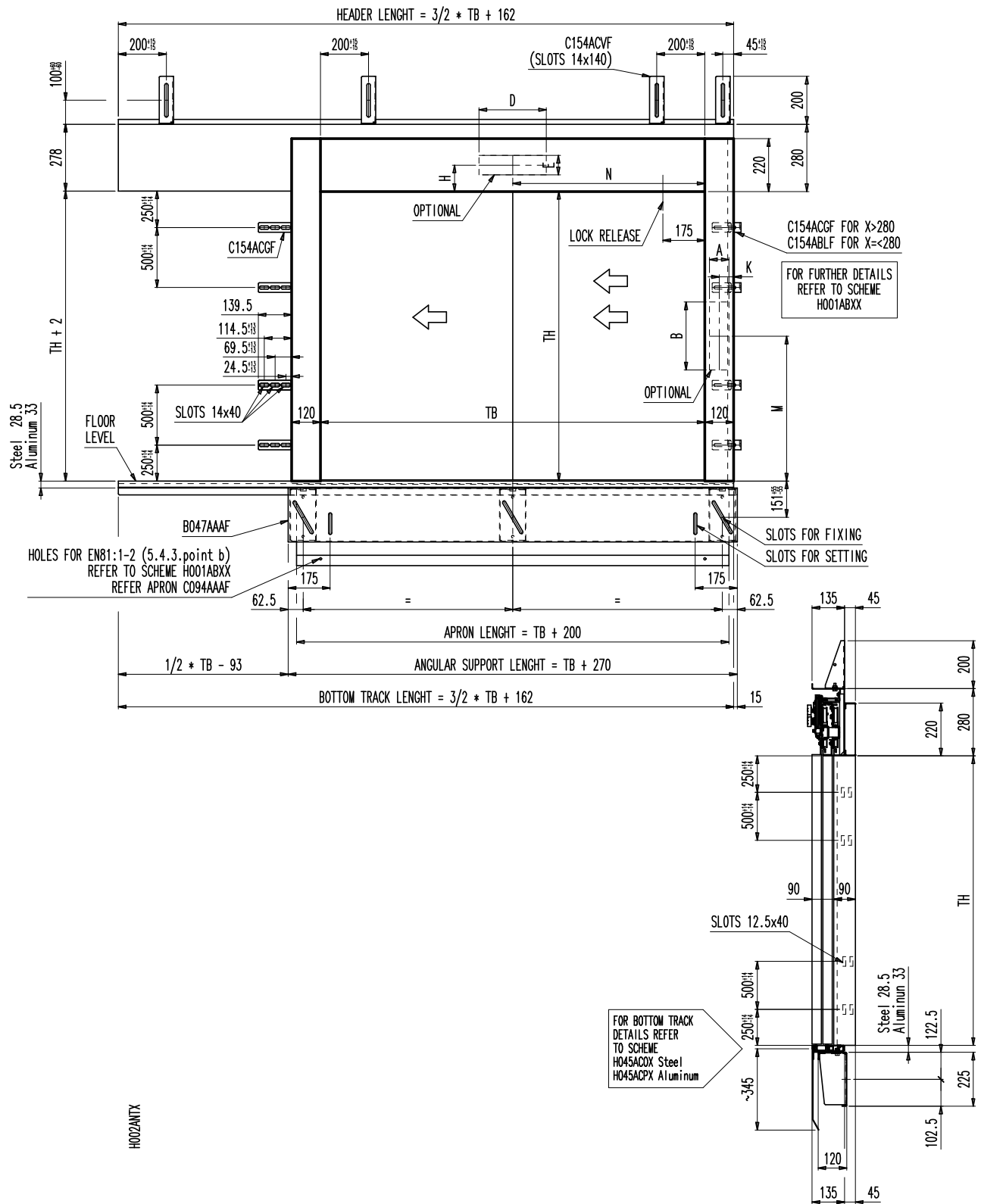
HINWEIS: Bei Feuerschutz-Türen mit Extrafahrt und bei Standard-Türen mit Extrafahrt ist der Kabineneinzug zu berücksichtigen (H001AABX)

NOTA: Per porte tagliafuoco con extracorsa, e comunque per porte standard con extracorsa, prevedere la spalletta di cabina con adeguata rientranza (H001AABX)

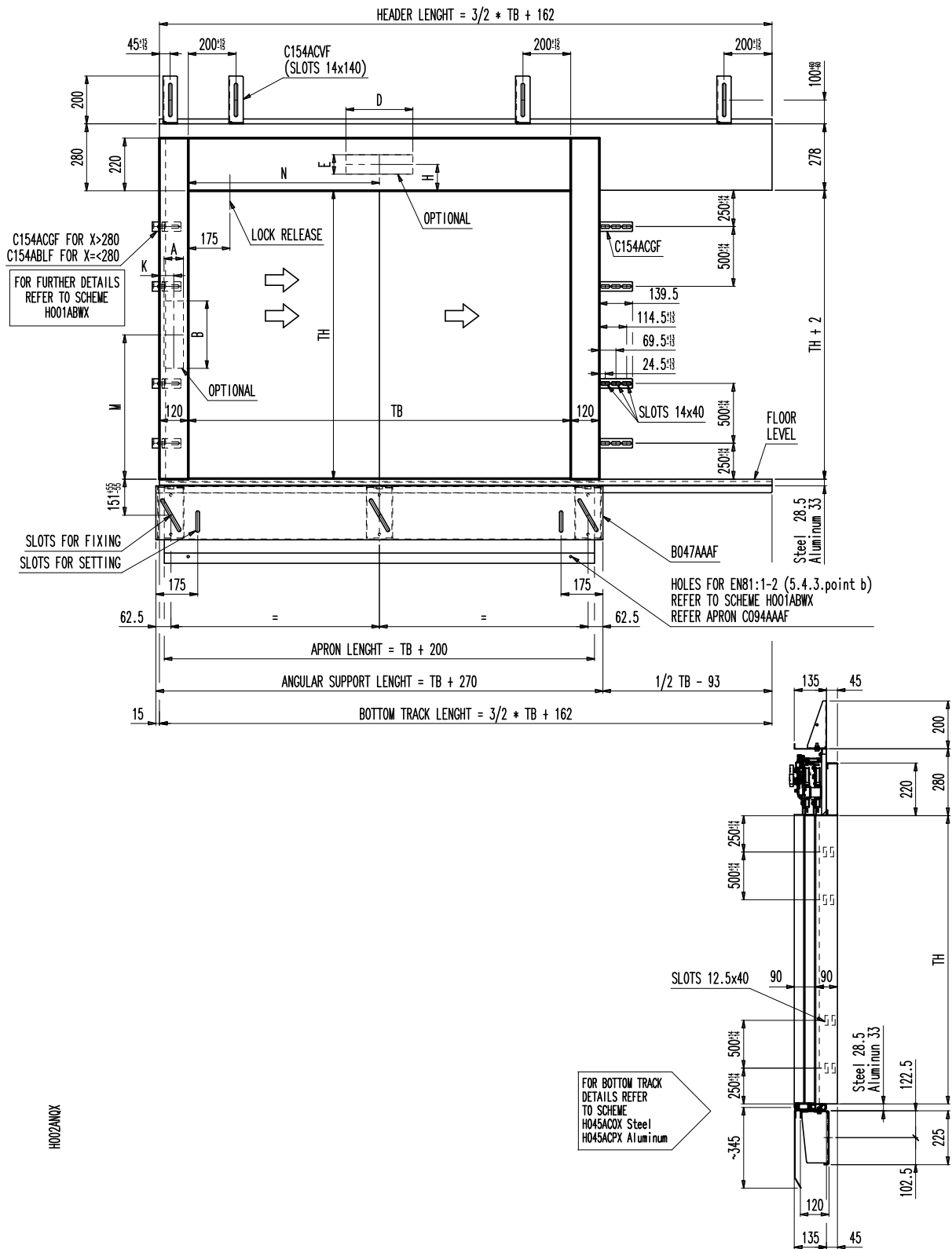
C00091

层门

标准层门 TB=1000 的正面和侧视图 - L

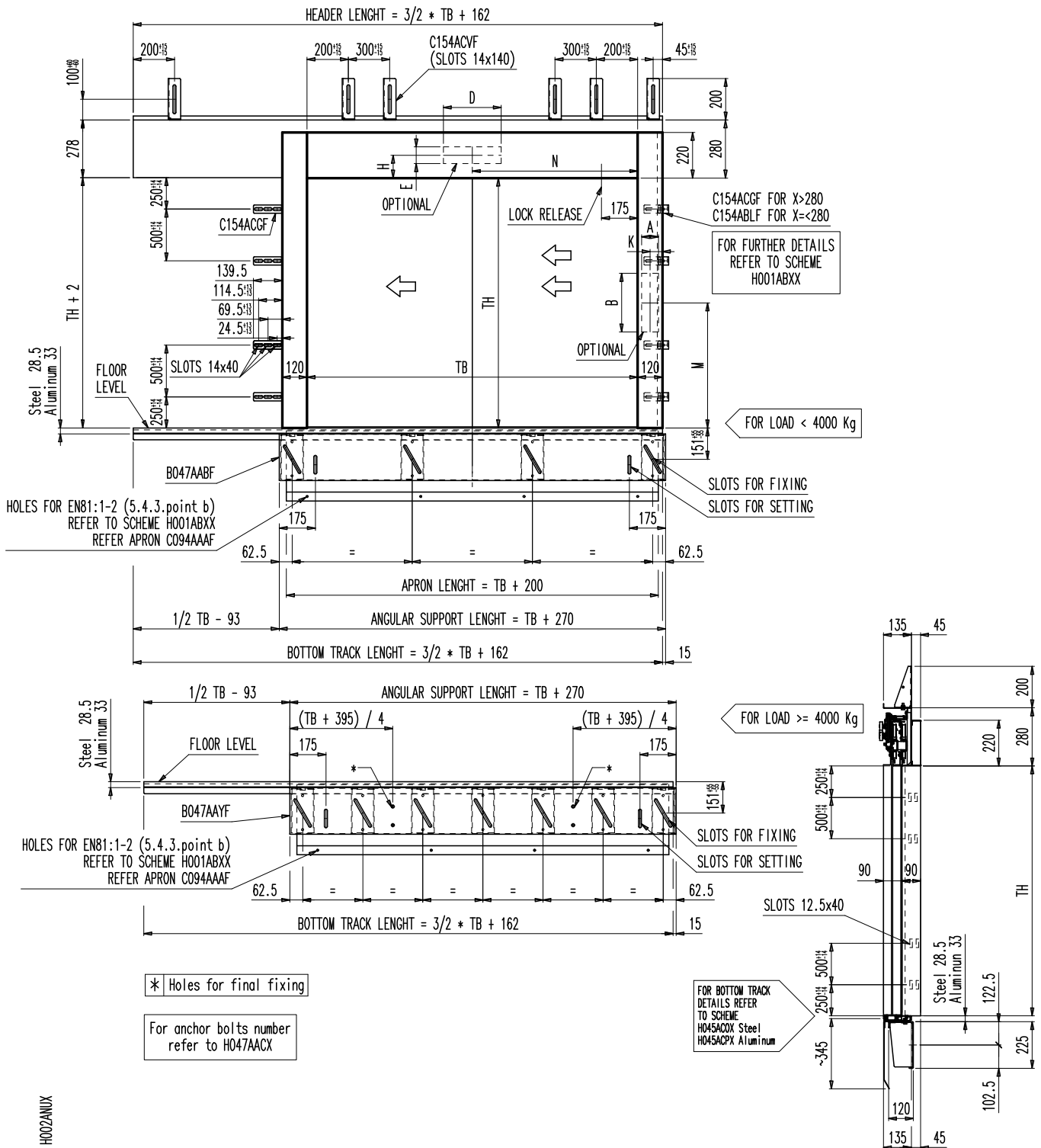


标准层门 TB=1000 的正面和侧视图 - R



层门

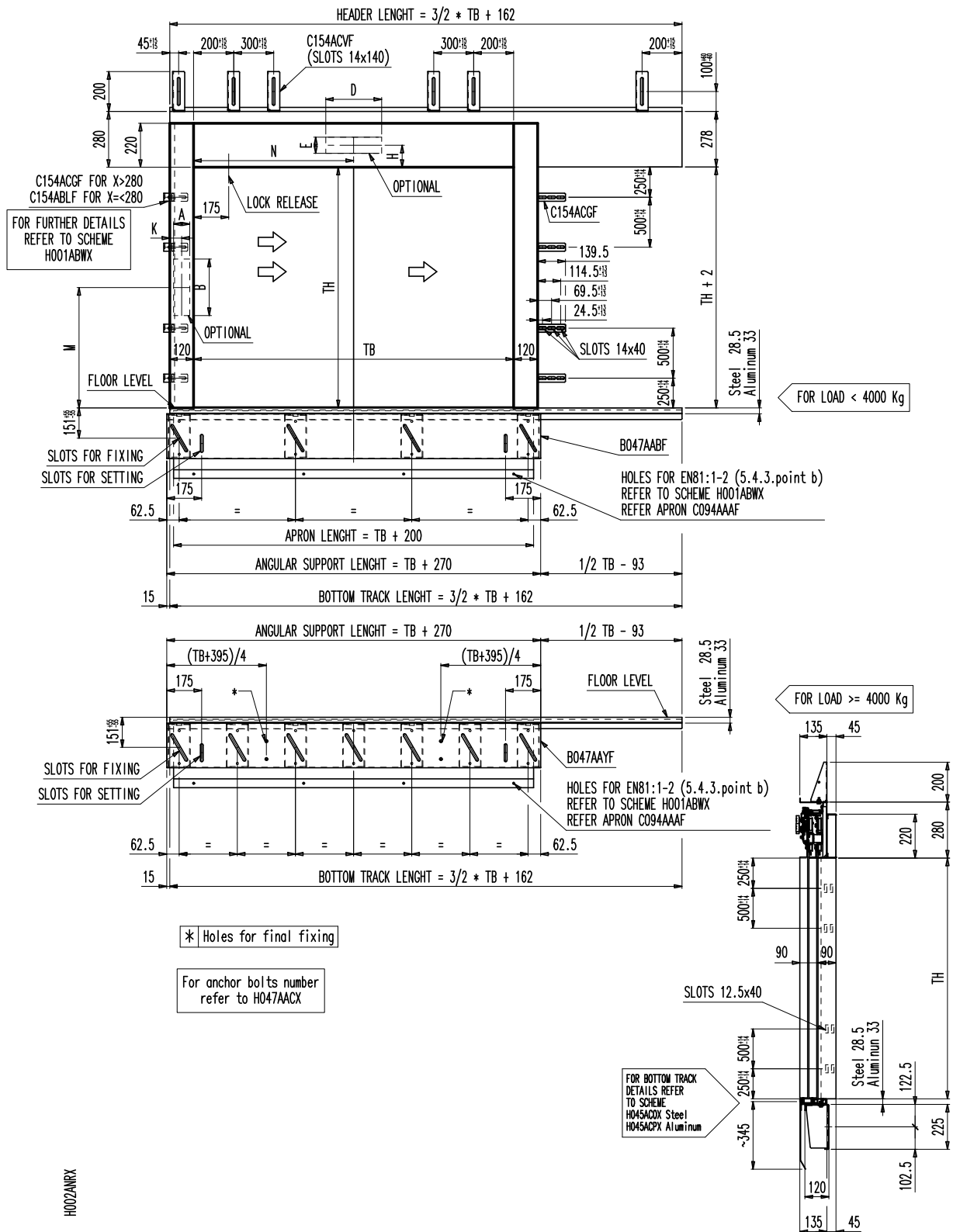
标准层门  $1000 < TB \leq 1600$  的正面和侧视图 - L



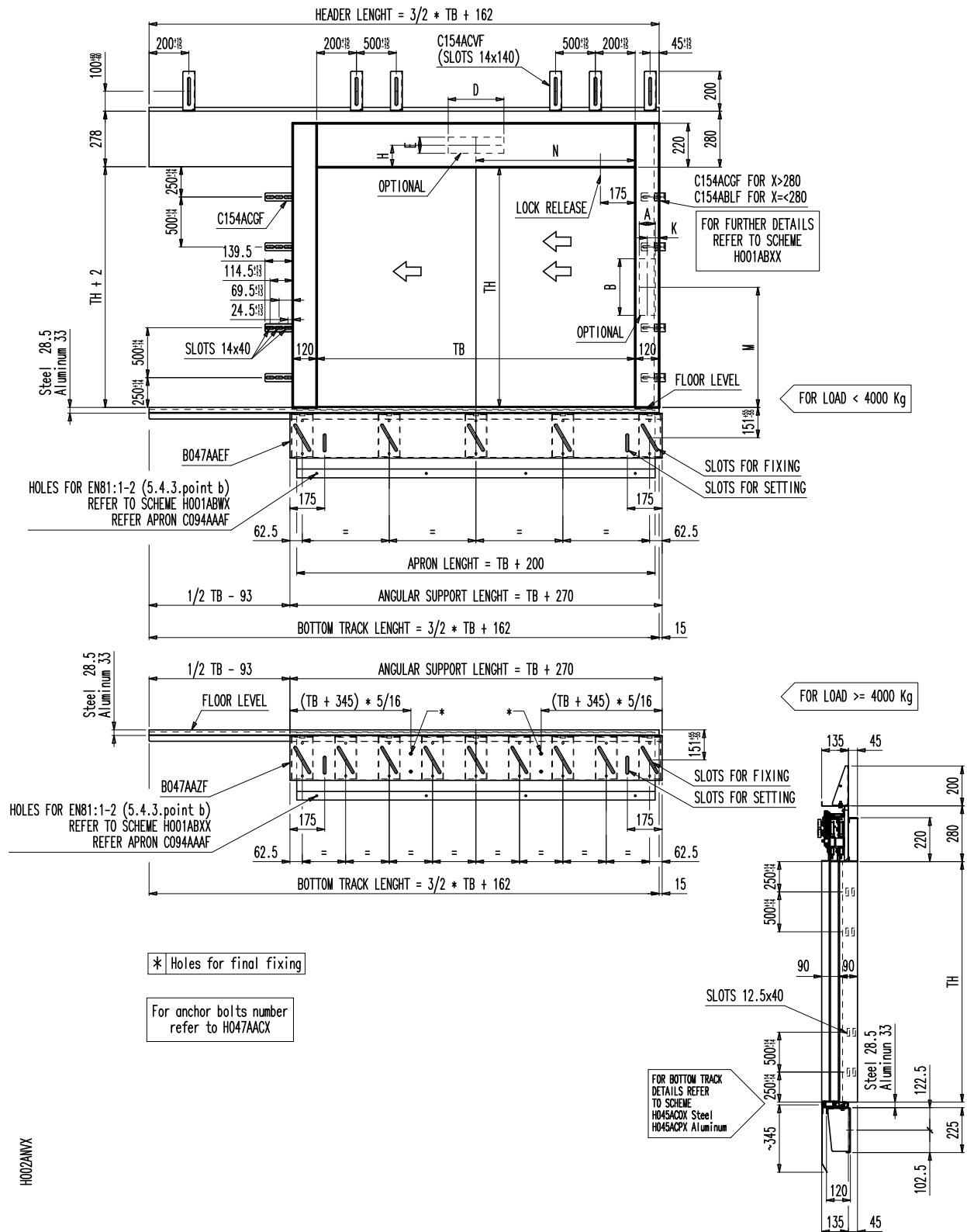
www.wittur.com\*© WITTUR • 版权所有

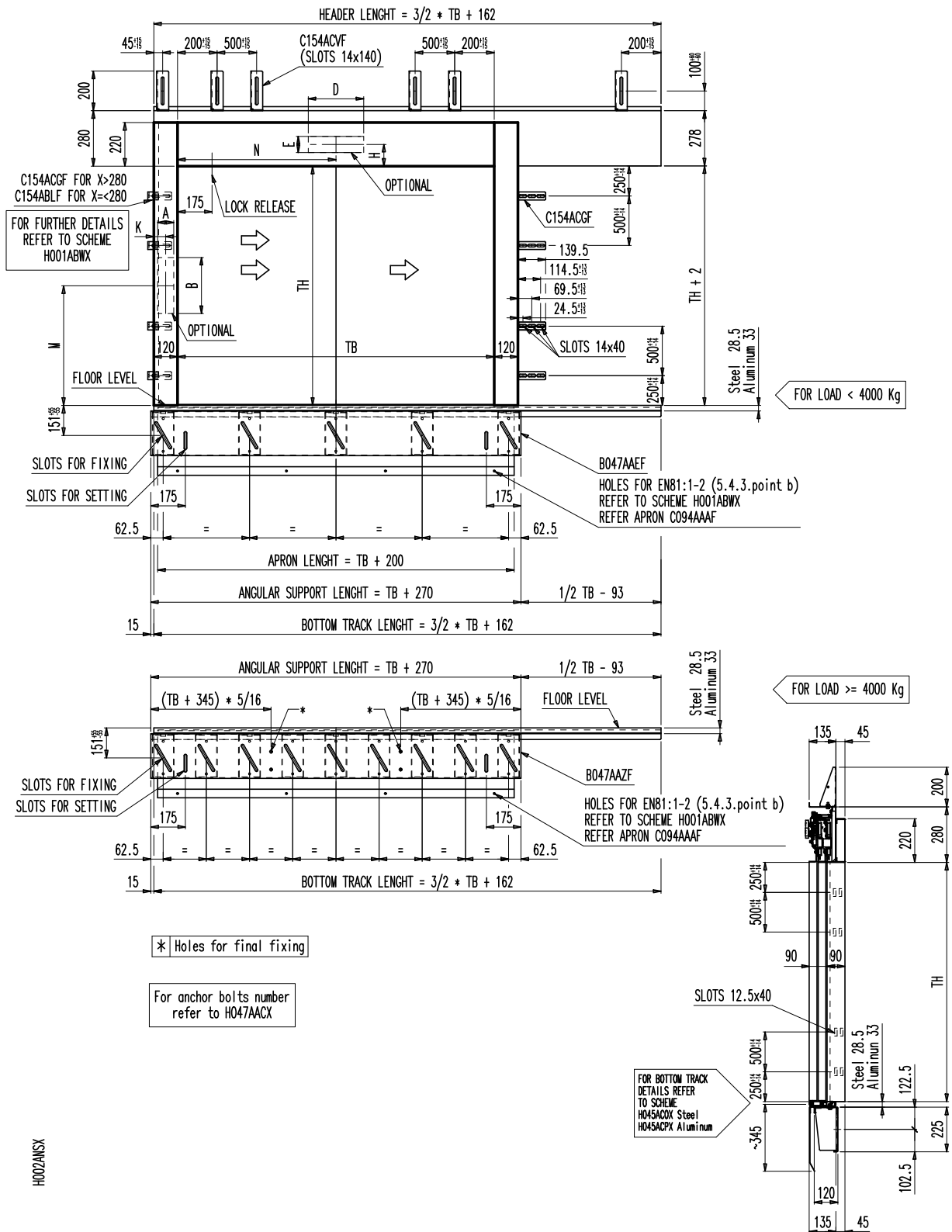
层门

标准层门  $1000 < TB \leq 1600$  的正面和侧视图 - R

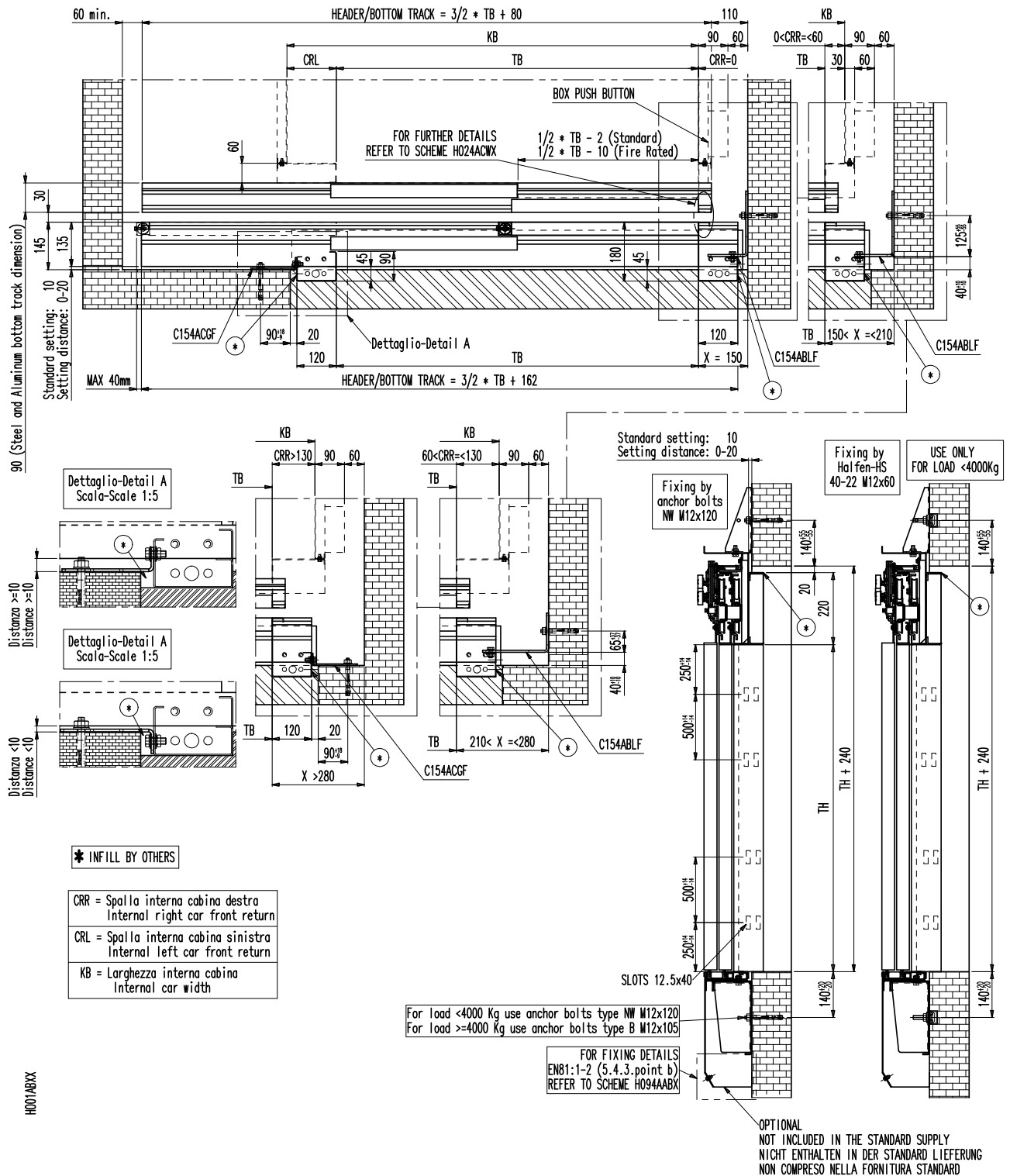


H002ANRX

标准层门  $1600 < TB \leq 2000$  的正面和侧视图 - L

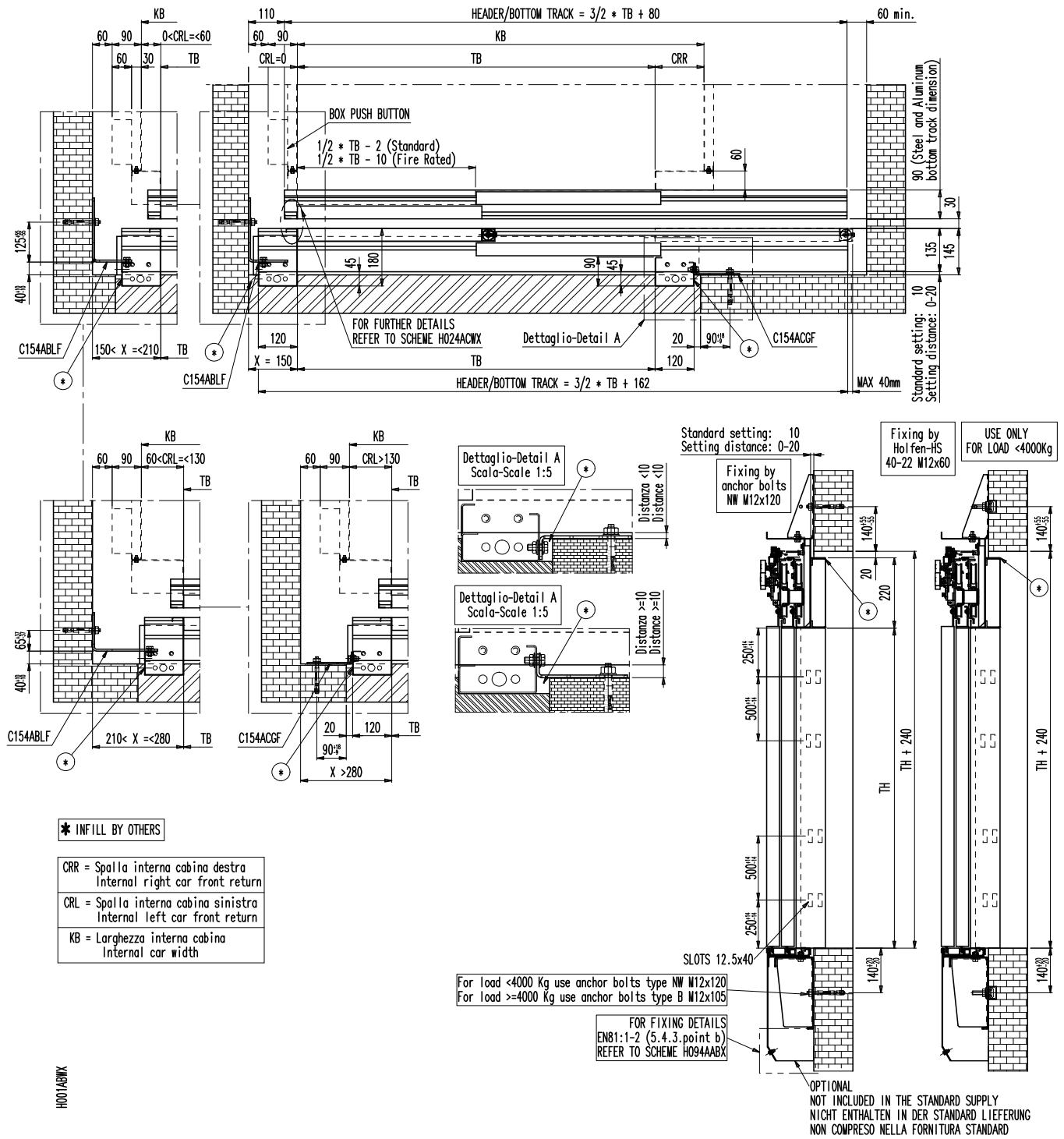
标准层门  $1600 < TB \leq 2000$  的正面和侧视图 - R

## 轿厢和层门的联结和安装 - L



## 嵌固件 K

## 轿厢和层门的联结和安装 - R

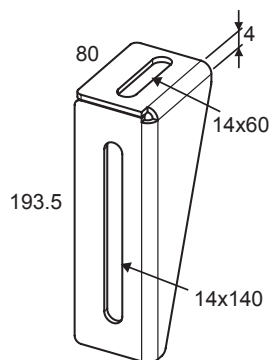


## 嵌固件 S

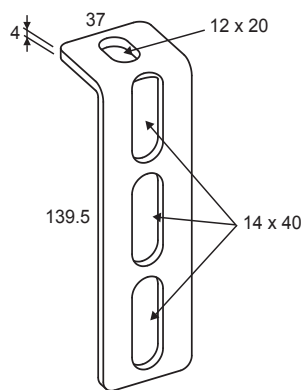
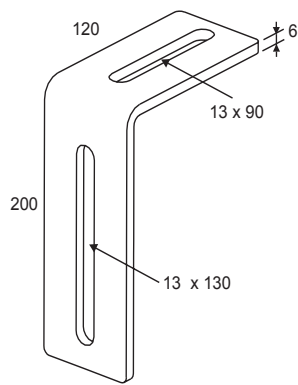
S 2L-R

层门安装支架 - 标准

顶部标准安装支架

**C154ACVF**

边侧标准安装支架

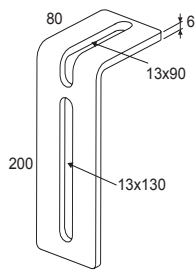
**C154ACGF02****C154ABLF**

带角支架的底部标准安装

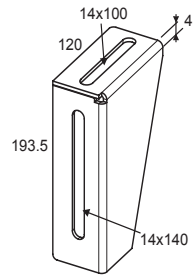
## 嵌固件 S

选配的安裝支架可根據要求提供

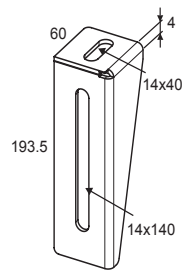
**选件**



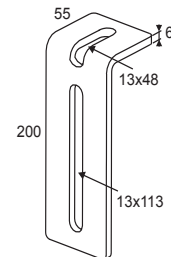
C154ABMF



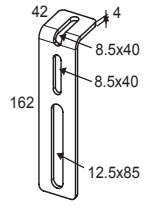
C154ADSF



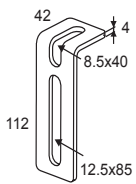
**C154ACWF**



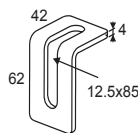
**C154ABNF**



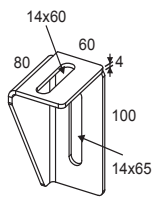
C154AATF



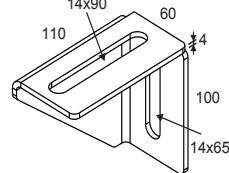
C154AASF



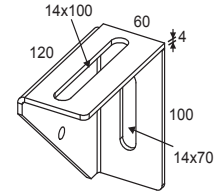
C154AARF



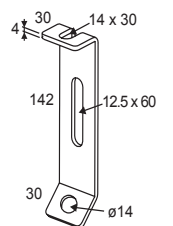
C154AFNF



C154AIGF

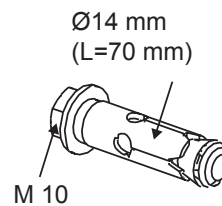
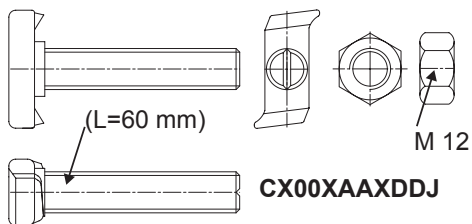


C154AFOF

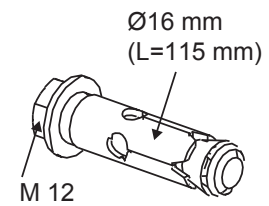


C154AABF

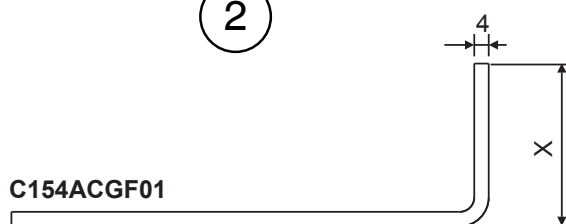
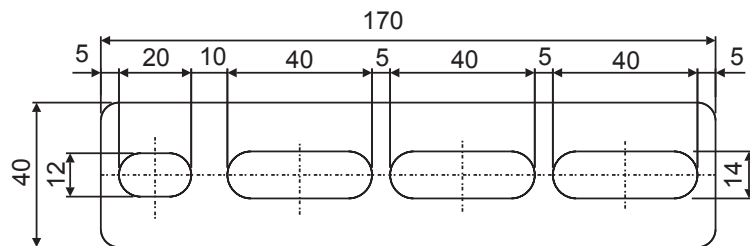
## HALFEN HS 40-22



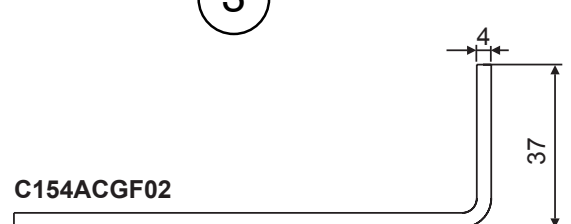
**CX00XAAXBFP**



**CX00XAAXCYG**



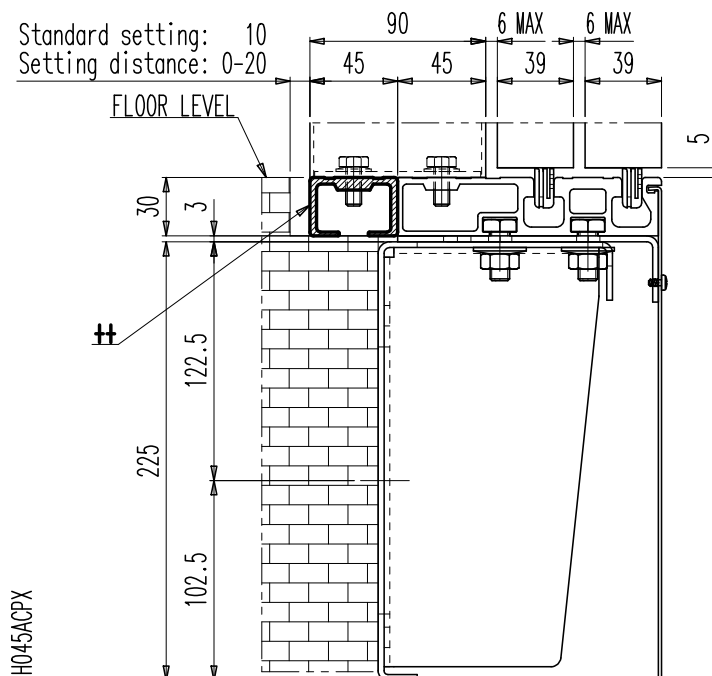
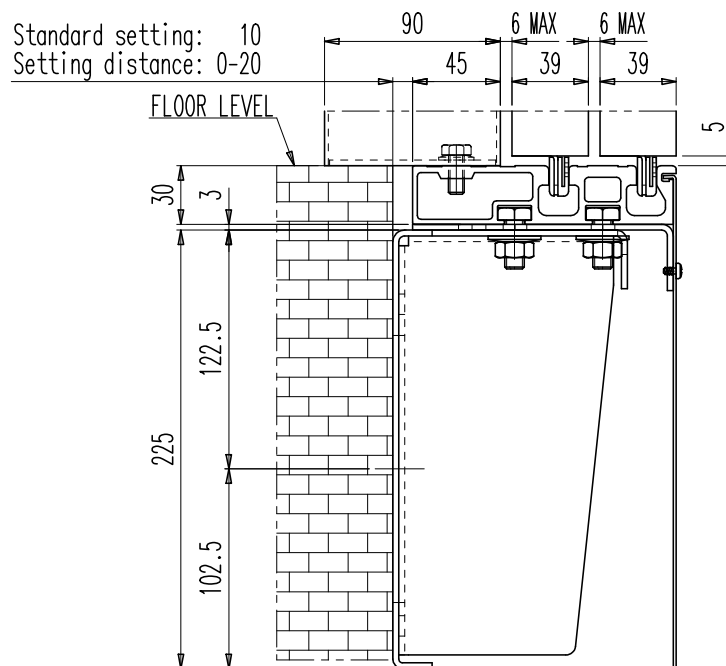
**C154ACGF01**



**C154ACGF02**

1	弯曲示例	2	扁平边侧安装支架（用于“现场”弯曲）	3	提供的扁平边侧安装支架已预先弯曲
---	------	---	--------------------	---	------------------

铝制地坎支架安装示意图

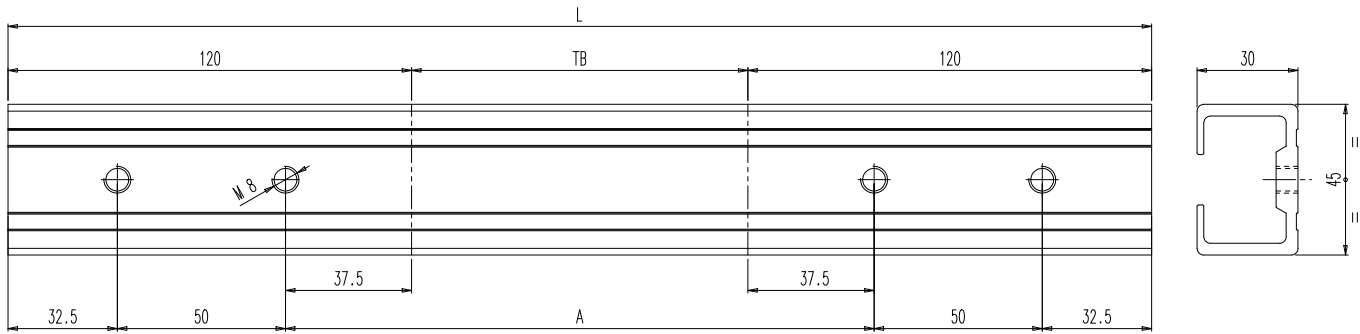


选件 ++  
额外的门槛元件 C149AKGA

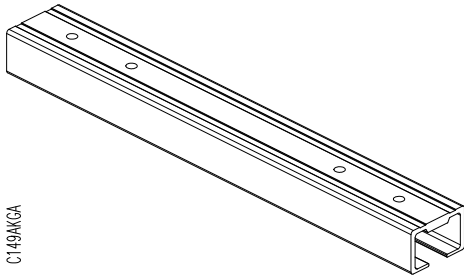
铝制轨道

S 2L-R

关闭铝制轨道的额外曲线

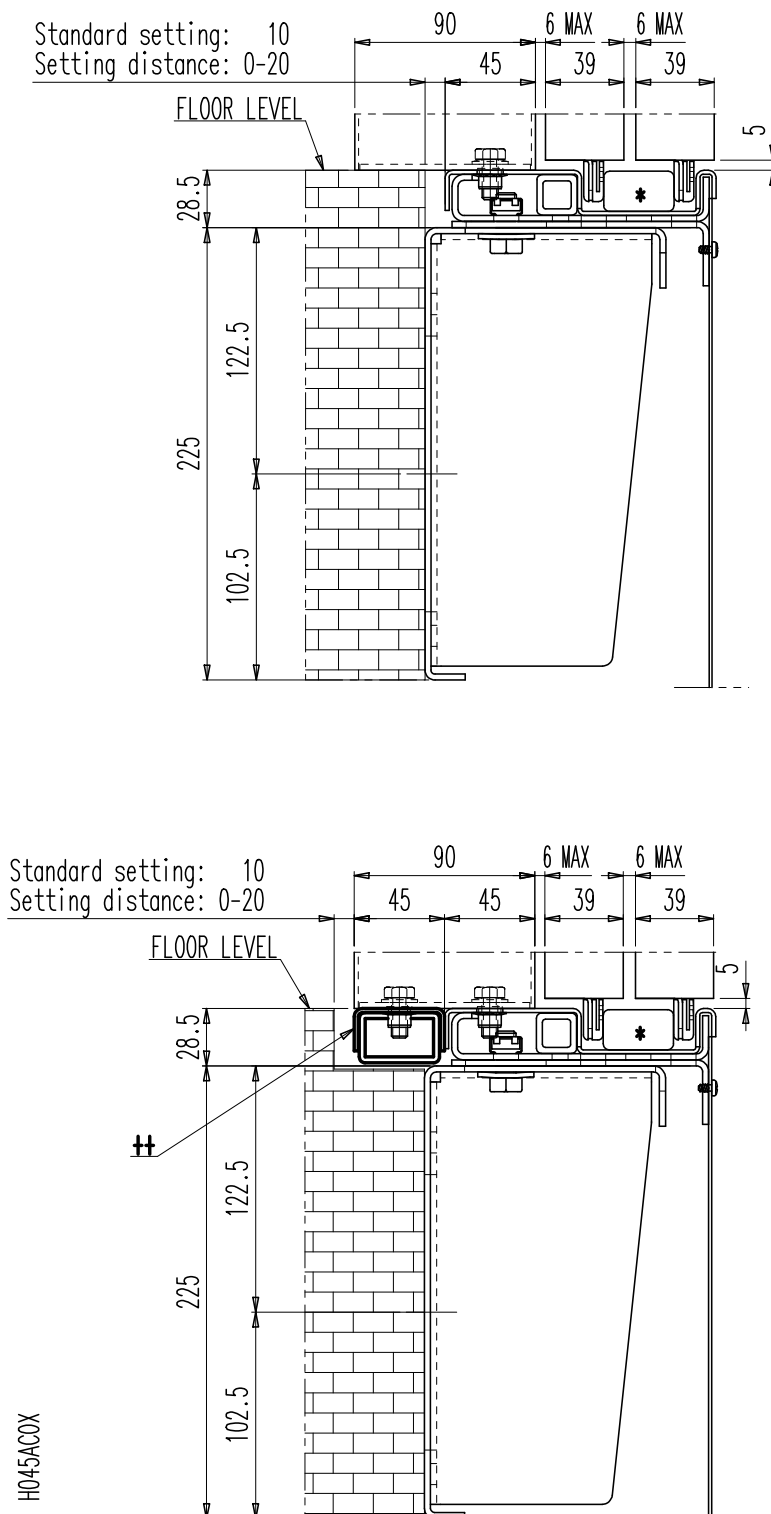


A	TB+75
L	TB+240



C149AKGA

钢制导轨支架安装示意图



选件 ++  
额外的门槛元件 B149AFVX

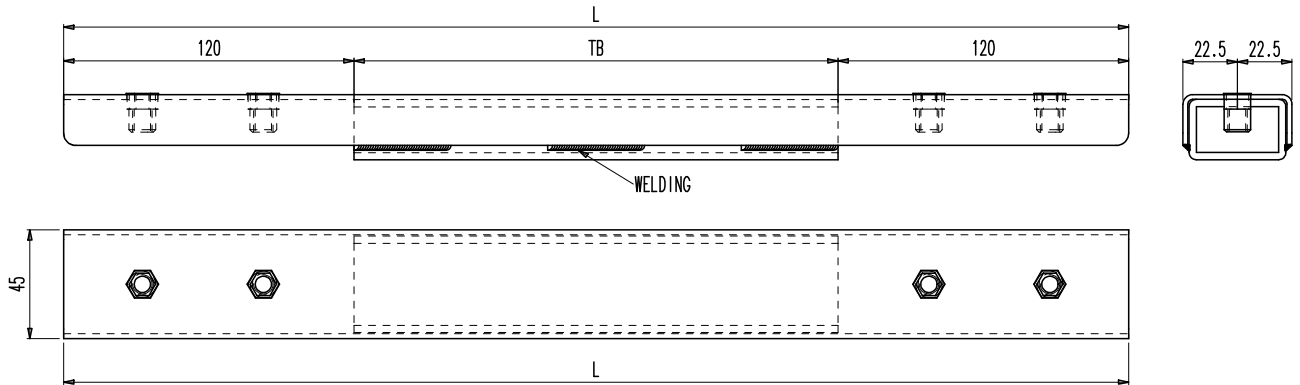


[img:Inline|T:\Corporate\R&D Dep\Programmi\Argo\Sematic\ManualiID\Generati\TC. 2. 004483. ZH\Immagini\asterisco.EPS] TB<1200 门  
槛空心截面 TB >=1200 实心地坎

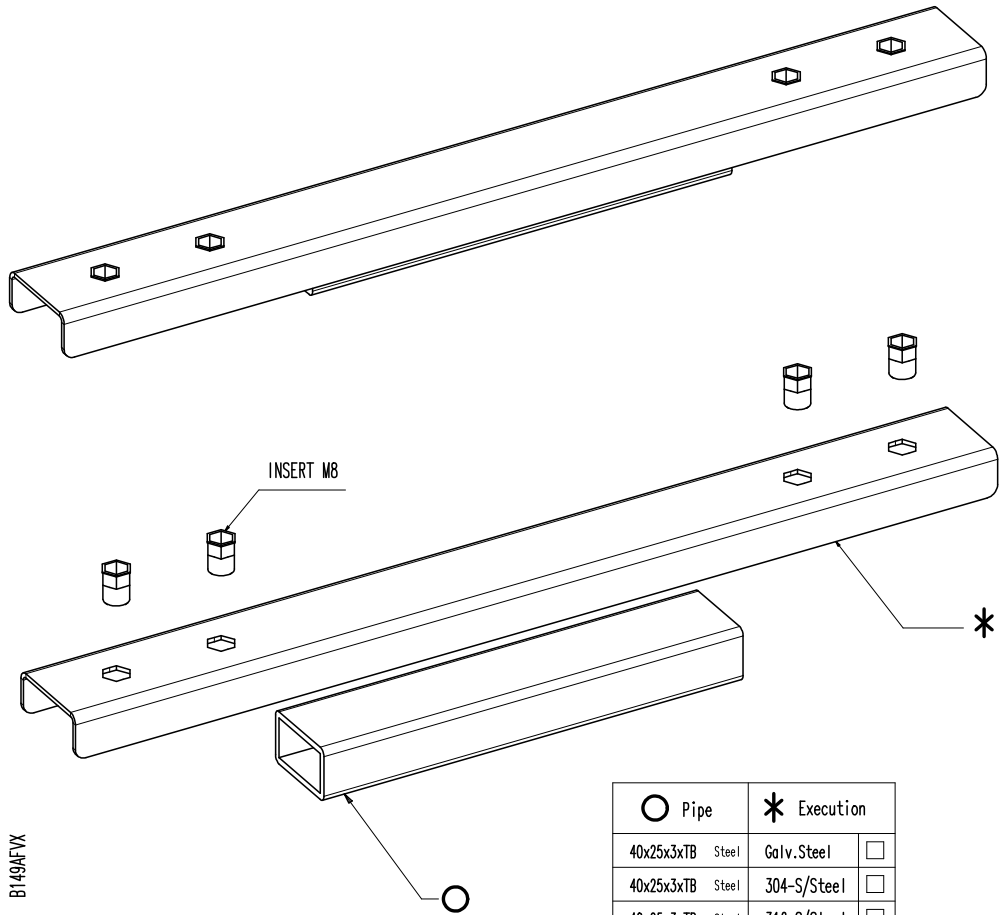
钢/不锈钢地坎

S 2L-R

钢/不锈钢地坎的关闭额外曲线



L TB+240

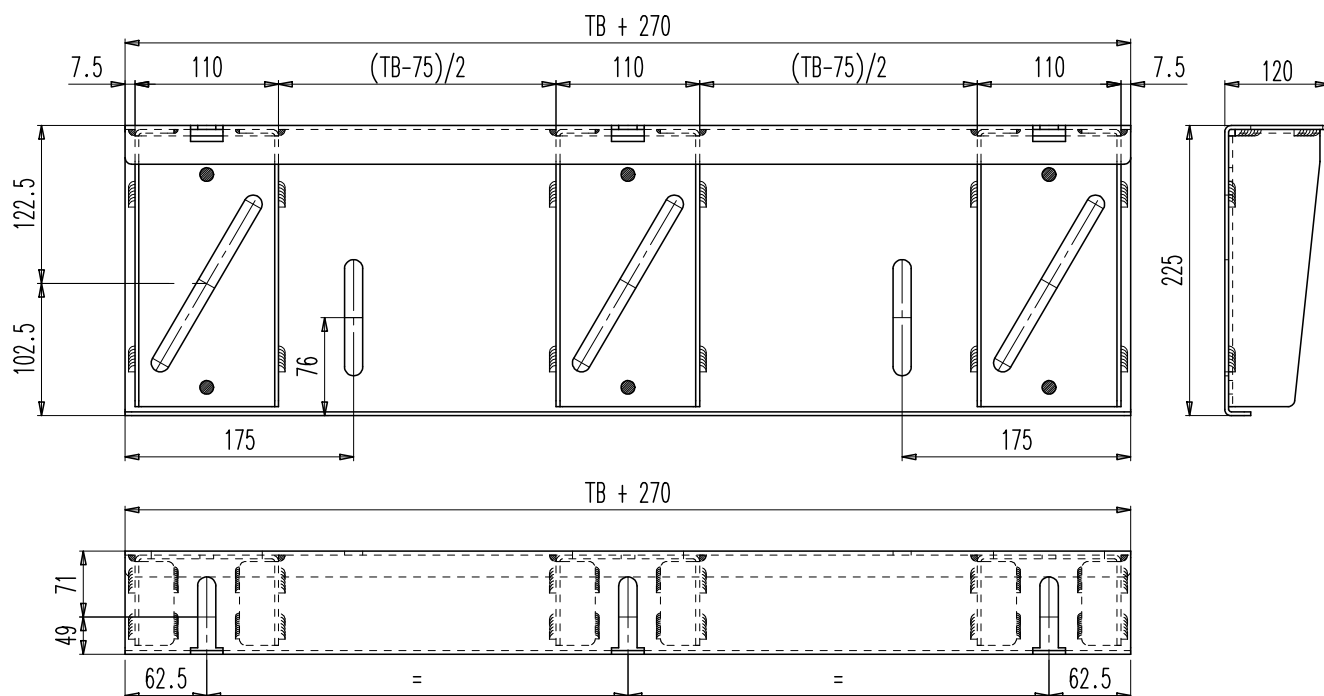


○ Pipe	* Execution
40x25x3xTB Steel	Galv.Steel <input type="checkbox"/>
40x25x3xTB Steel	304-S/Steel <input type="checkbox"/>
40x25x3xTB Steel	316-S/Steel <input type="checkbox"/>

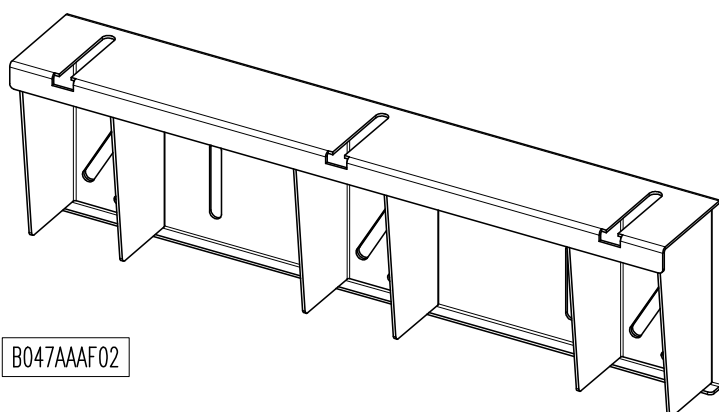
## 角支架

S 2L-R

全角支架 TB=1000 - 载重量 &lt; 4000 KG

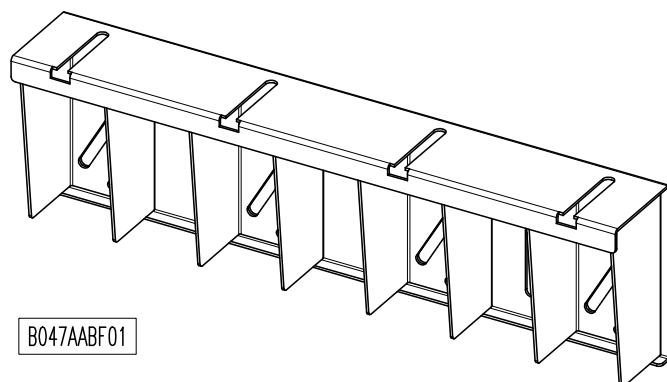
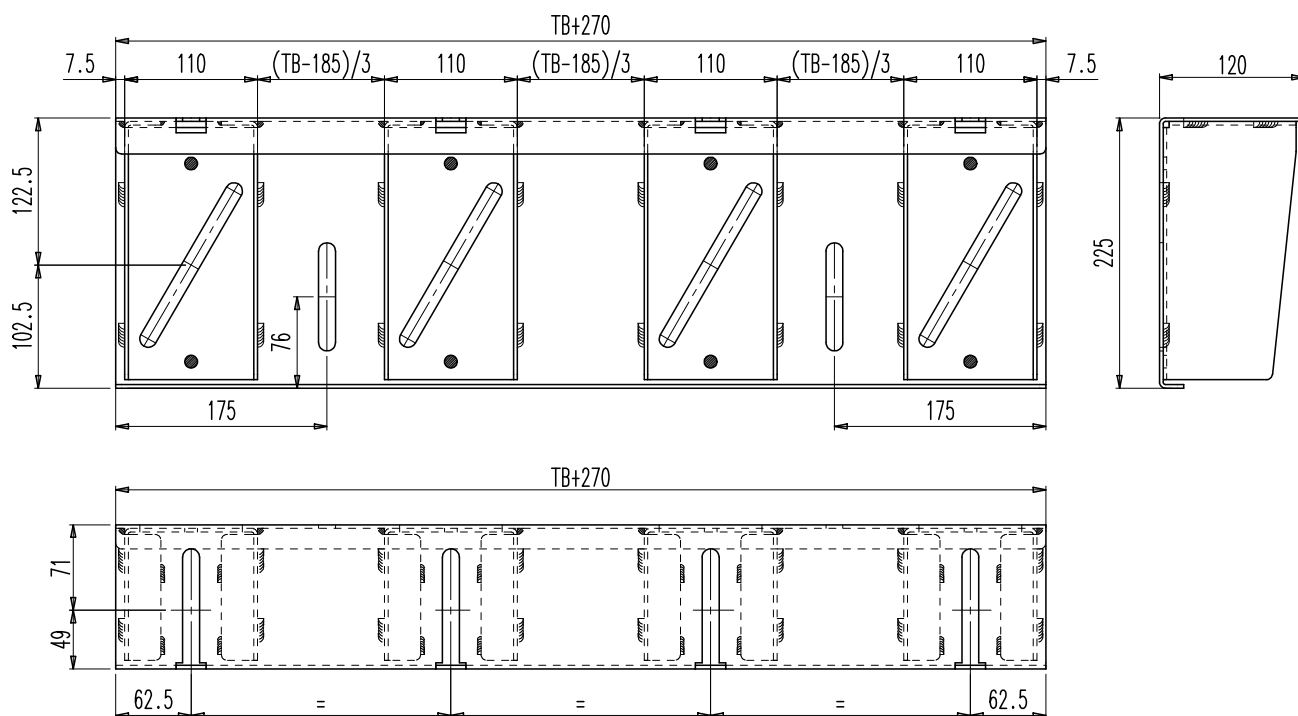


B047AAAF



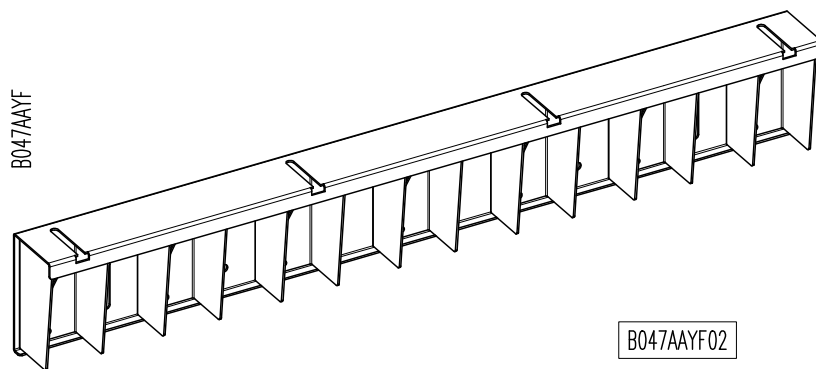
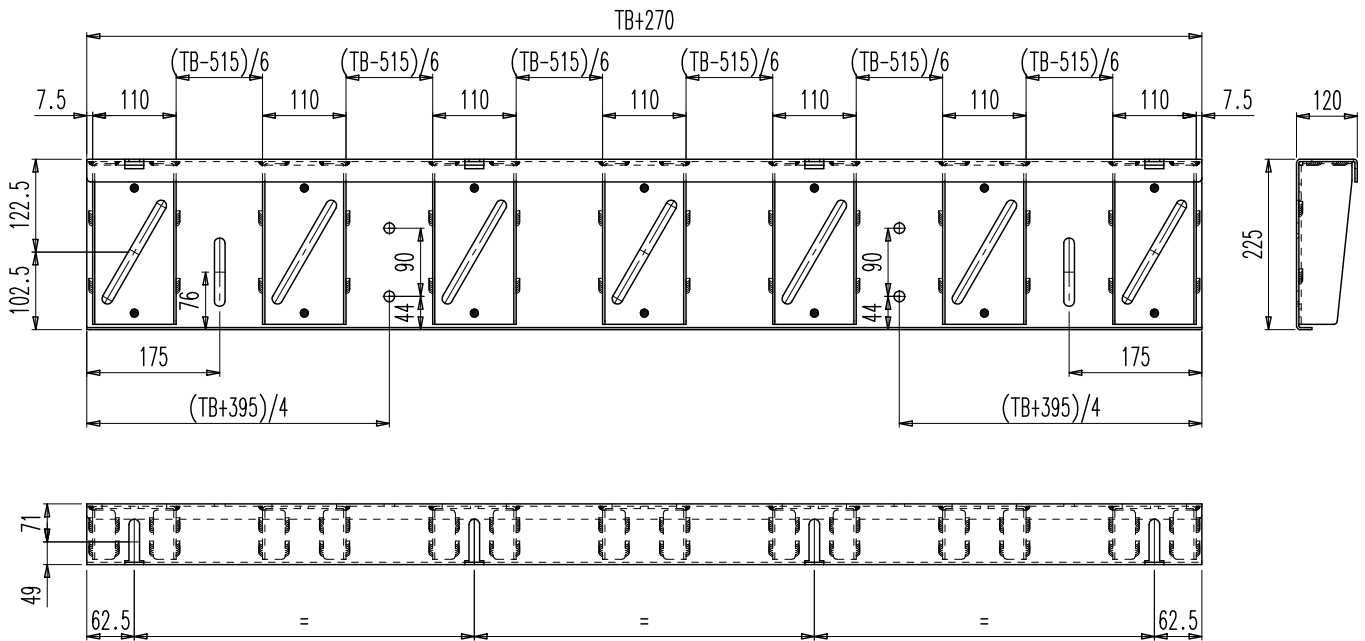
B047AAAF02

## 角支架

全角支架  $1000 < TB \leq 1600$  - 载荷量  $< 4000$  KG

## 角支架

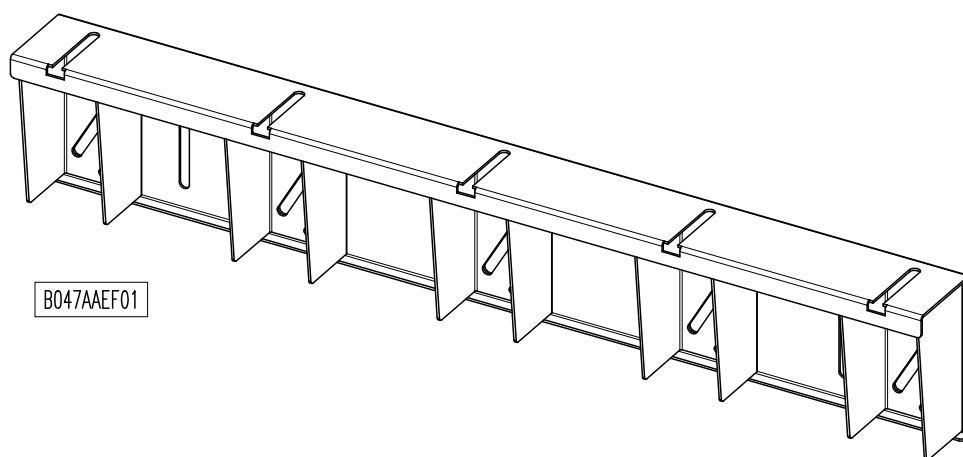
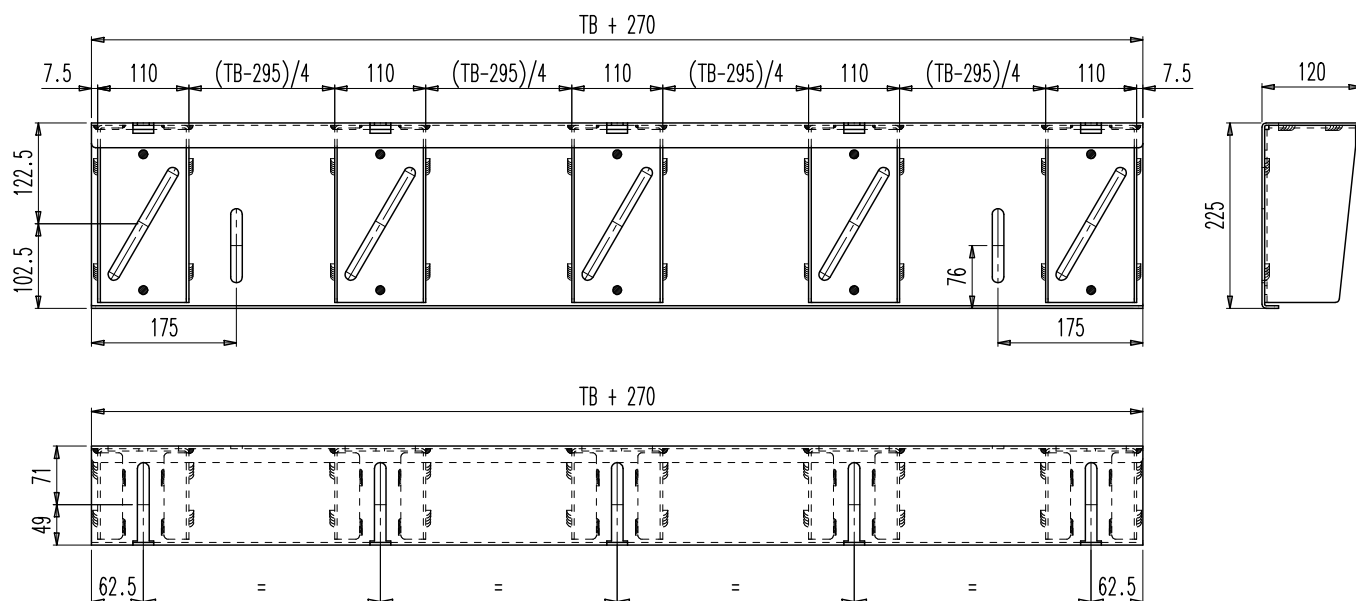
S 2L-R

全宽用于角支架  $1000 < TB \leq 1600$  - 载重量  $\geq 4000$  KG

B047AAYF02

## 角支架

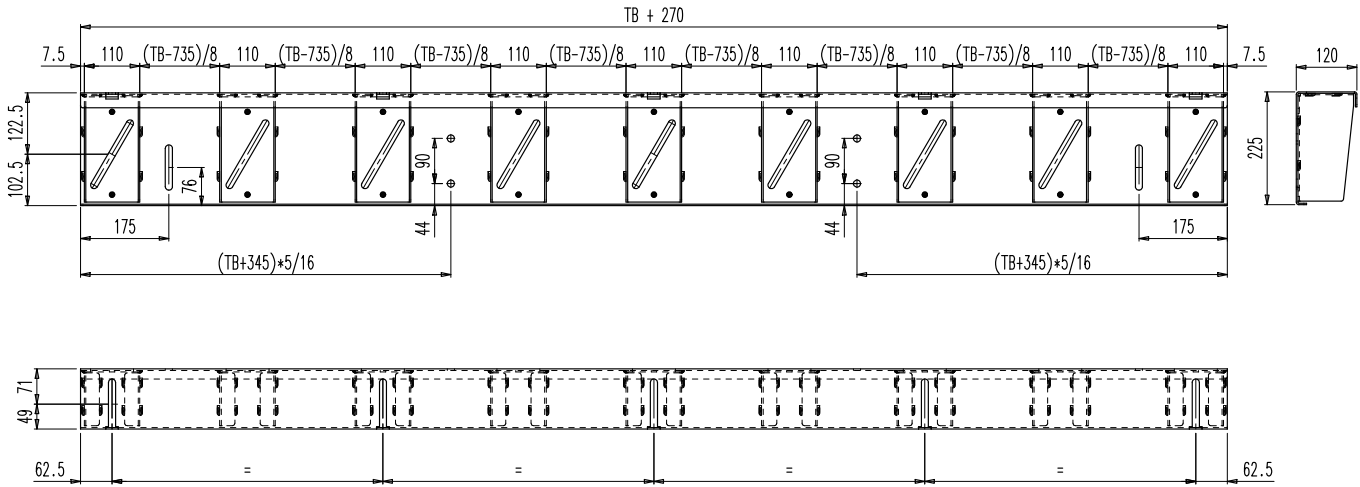
S 2L-R

全角支架  $1600 < TB \leq 2000$  - 载重量  $< 4000$  KG

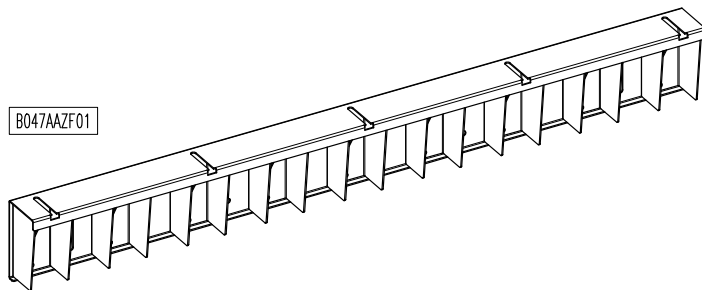
角支架

S 2L-R

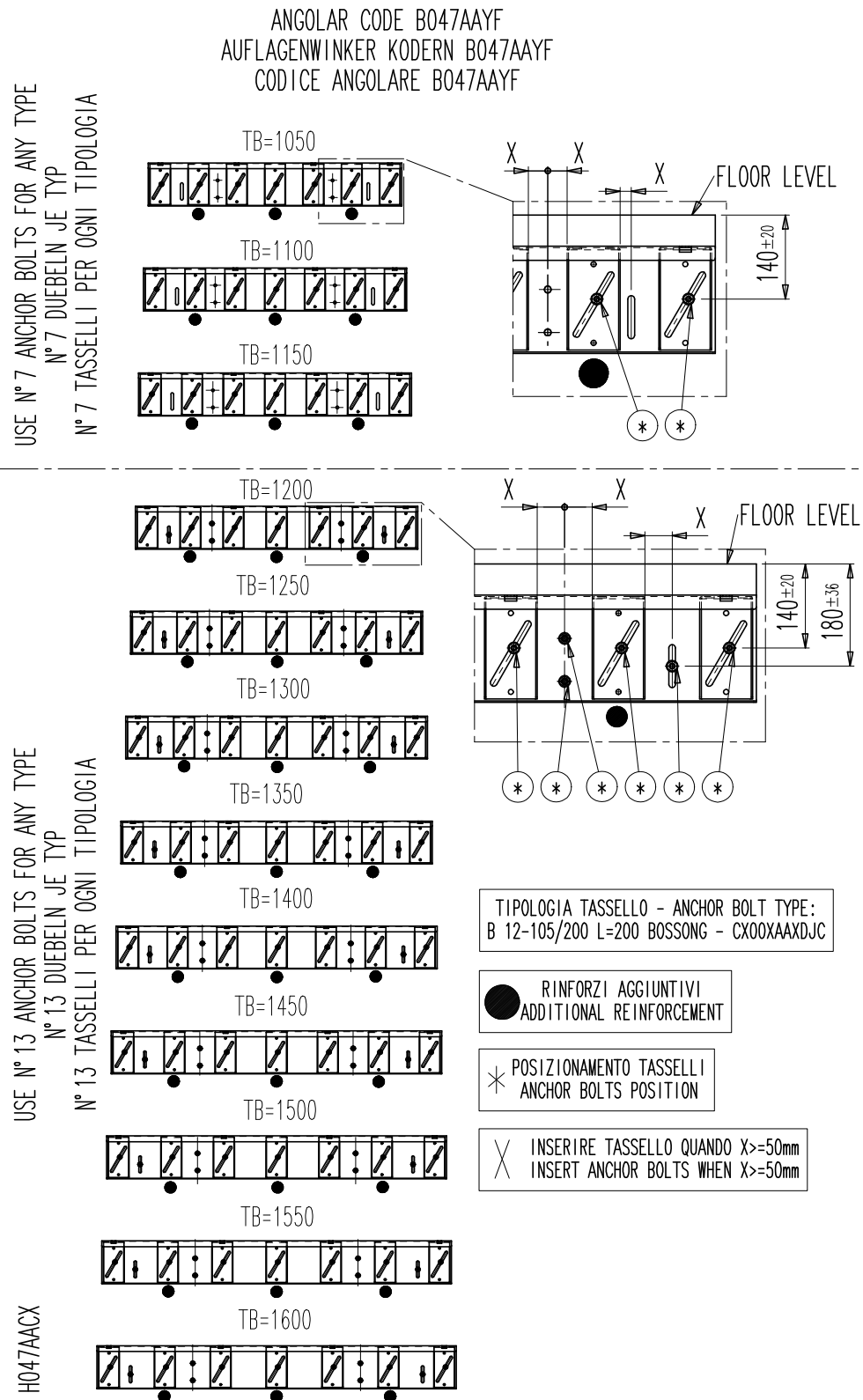
全角支架  $1600 < TB \leq 2000$  - 载荷量  $\geq 4000$  KG



B047AAZF

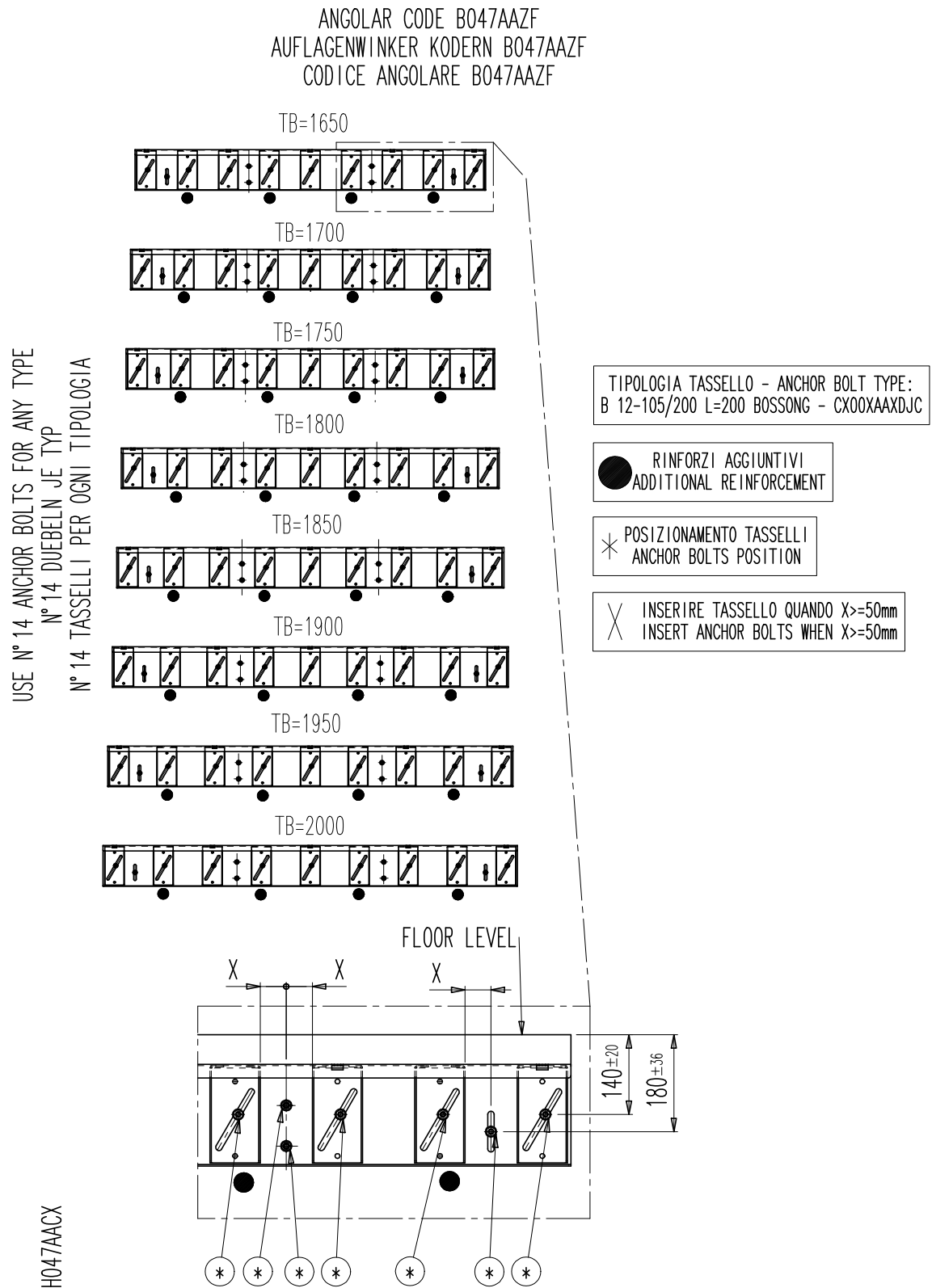


用于带载荷量  $\geq 4000 \text{ KG}$  -  $1000 < \text{TB} < 1600$  的电梯全角支架的安装点示意图

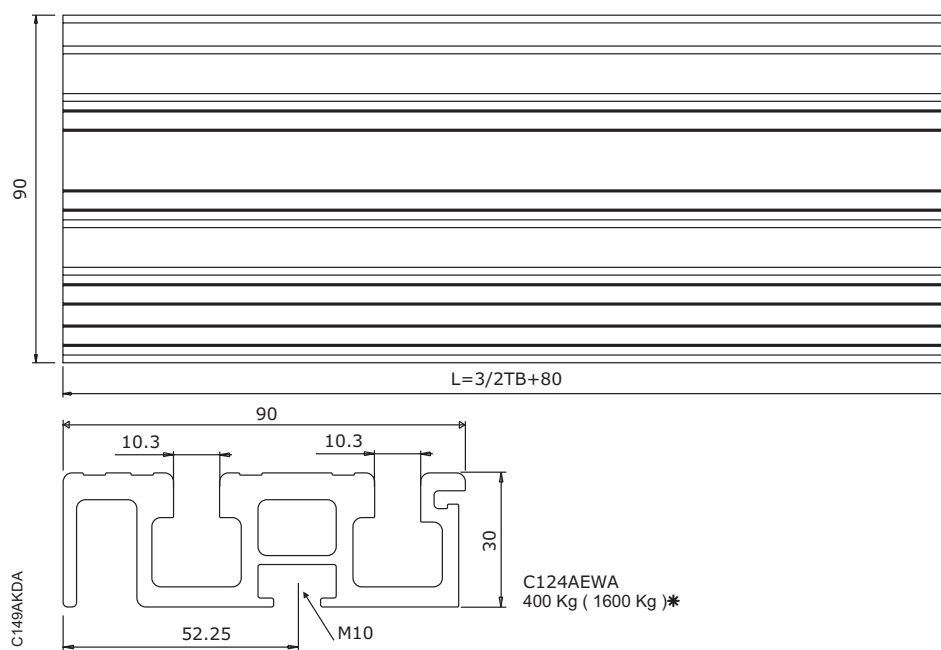
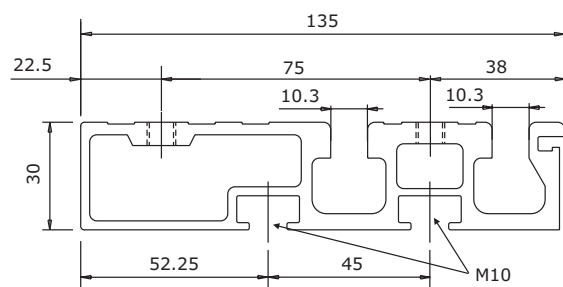
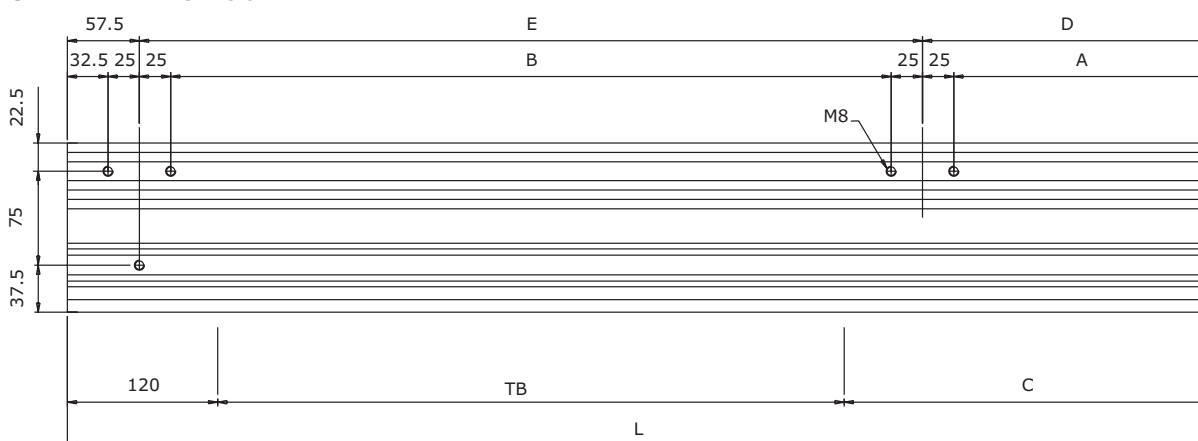


## 角支架

S 2L-R

用于带载荷量  $\geq 4000$  KG -  $1600 < TB < 2000$  的电梯的全宽角支撑安装点示意图

## 完整铝制地坎 - L

**K2L CAR DOOR****S2L LANDING DOOR**

C149ABJA

C124ADZA  
400 Kg ( 1600 Kg )\*

<b>A</b>	1/2TB - 45,5	<b>D</b>	1/2TB - 20,5
<b>B</b>	TB+75	<b>E</b>	TB + 125
<b>C</b>	1/2TB + 42	<b>L</b>	3/2TB + 162

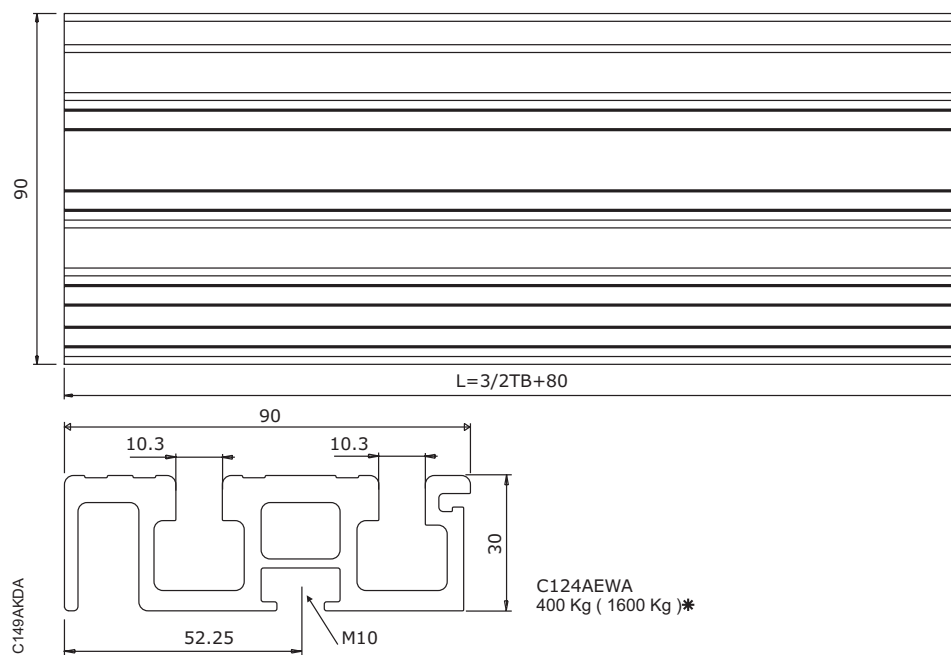
The load mentioned above refers exclusively to a vertically applied static force  $\nabla$  in the weakest point of the sills, starting from the assumption of rigidly fixed sill supports. Any other consideration as far as the method of fixation (of the sill supports) is concerned is excluded. The figures given into brackets refer to the load of carriages with four wheels.

Die oben genannte Belastung bezieht sich ausschließlich auf eine senkrecht auf die Schwellen wirkende, statische Last, welche an der ungünstigsten Stelle auf einen steifen Befestigungswinkel wirkt. Betrachtungen zur Befestigungsmethode (des Winkels) sind dabei nicht berücksichtigt. Die Angaben in Klammern beziehen sich auf die Belastung durch vierrädrige Wagen.

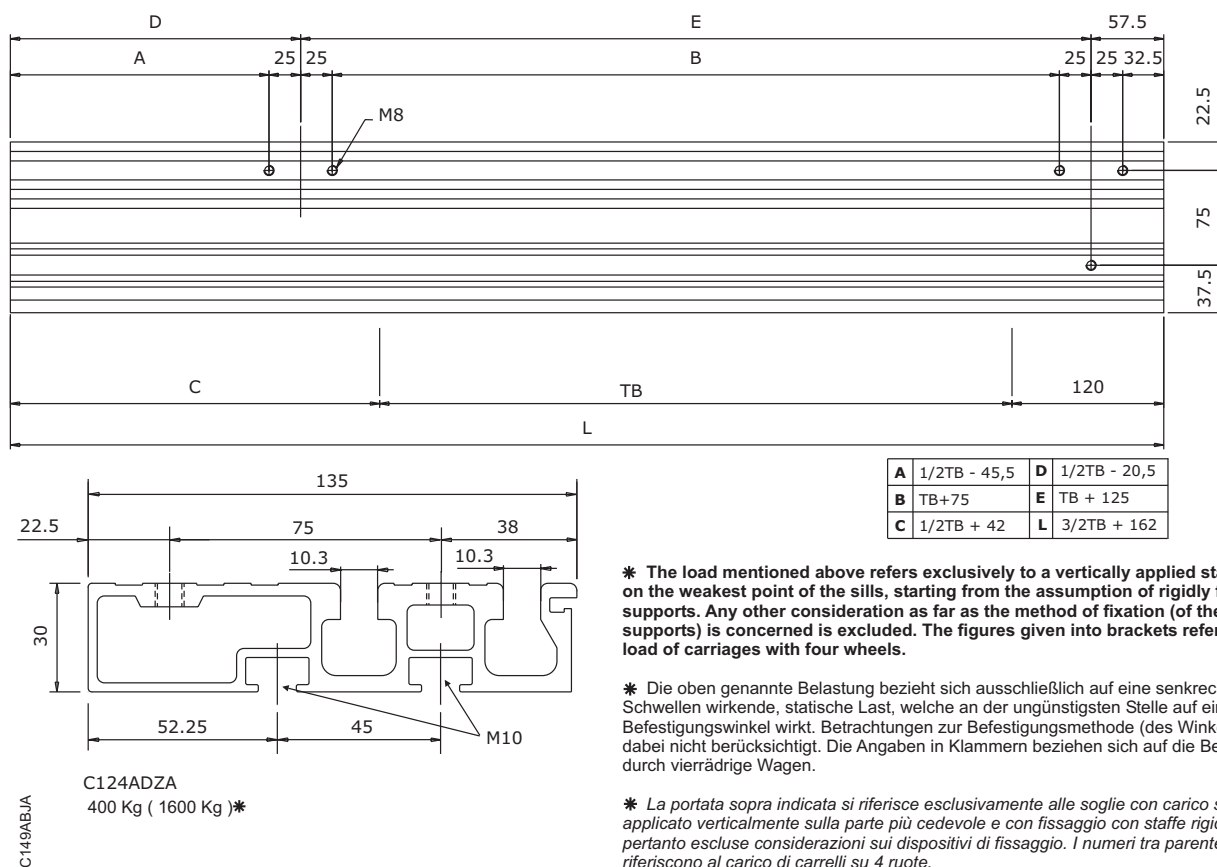
La portata sopra indicata si riferisce esclusivamente alle soglie con carico statico  $\nabla$  applicato verticalmente sulla parte più cedevole e con fissaggio con staffe rigide. Sono pertanto escluse considerazioni sui dispositivi di fissaggio. I numeri tra parentesi si riferiscono al carico di carrelli su 4 ruote.

## 完整铝制地坎 - R

## K2R CAR DOOR



## S2R LANDING DOOR



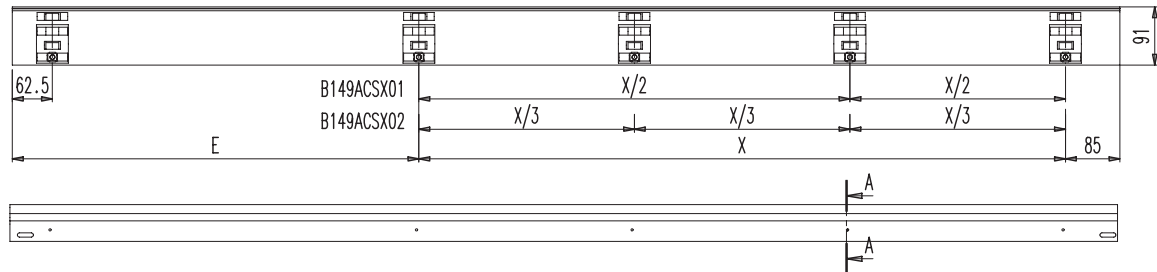
\* The load mentioned above refers exclusively to a vertically applied static force on the weakest point of the sills, starting from the assumption of rigidly fixed sill supports. Any other consideration as far as the method of fixation (of the sill supports) is concerned is excluded. The figures given into brackets refer to the load of carriages with four wheels.

\* Die oben genannte Belastung bezieht sich ausschließlich auf eine senkrecht auf die Schwellen wirkende, statische Last, welche an der ungünstigsten Stelle auf einen steifen Befestigungswinkel wirkt. Betrachtungen zur Befestigungsmethode (des Winkels) sind dabei nicht berücksichtigt. Die Angaben in Klammern beziehen sich auf die Belastung durch vierrädrige Wagen.

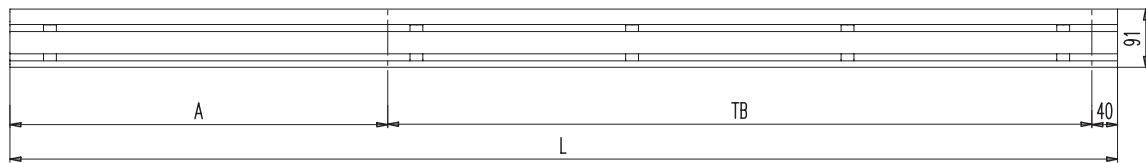
\* La portata sopra indicata si riferisce esclusivamente alle soglie con carico statico applicato verticalmente sulla parte più cedevole e con fissaggio con staffe rigide. Sono pertanto escluse considerazioni sui dispositivi di fissaggio. I numeri tra parentesi si riferiscono al carico di carrelli su 4 ruote.

自立式钢/不锈钢导轨 1000≤TB&lt;1200 - L

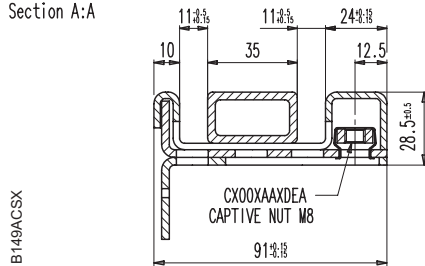
选件

**K2L CAR DOOR**

A	TB/2+40
E	TB/2+85
L	1.5TB+80
X	TB-90

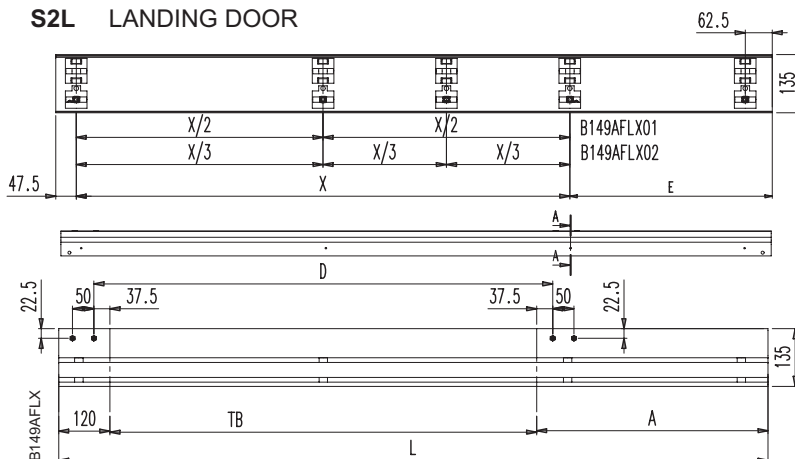


Section A:A

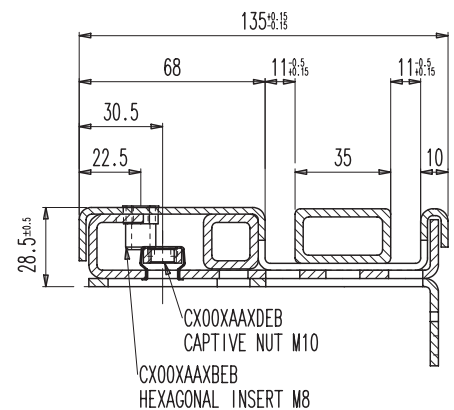


B149ACSX01	TB=1000
B149ACSX02	1000<TB<1200

2000 Kg (8000 Kg)\*

**S2L LANDING DOOR**

Section A:A



A	TB/2+42
D	TB+75
E	TB/2-30.5
L	1.5TB+162
X	TB+145

B149AFLX01	TB=1000
B149AFLX02	1000<TB≤1150

2000 Kg (8000 Kg)\*

\* The load mentioned above refers exclusively to a vertically applied static force on the weakest point of the sills, starting from the assumption of rigidly fixed sill supports. Any other consideration as far as the method of fixation (of the sill supports) is concerned is excluded. The figures given into brackets refer to the load of carriages with four wheels.

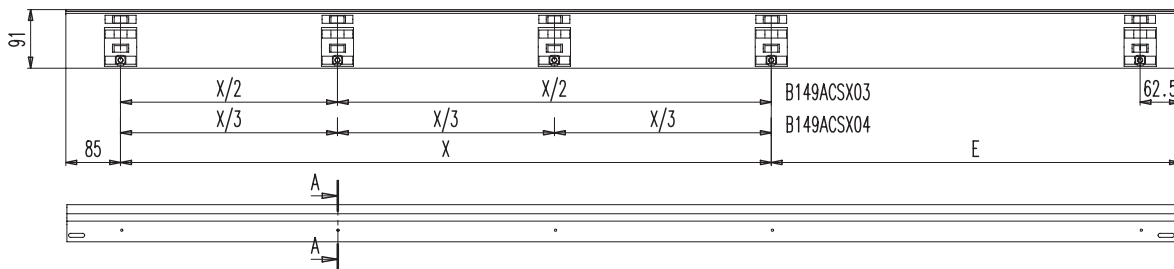
\* Die oben genannte Belastung bezieht sich ausschließlich auf eine senkrecht auf die Schwellen wirkende, statische Last, welche an der ungünstigsten Stelle auf einen steifen Befestigungswinkel wirkt. Betrachtungen zur Befestigungsmethode (des Winkels) sind dabei nicht berücksichtigt. Die Angaben in Klammern beziehen sich auf die Belastung durch vierrädrige Wagen.

\* La portata sopra indicata si riferisce esclusivamente alle soglie con carico statico applicato verticalmente sulla parte più cedevole e con fissaggio con staffe rigide. Sono pertanto escluse considerazioni sui dispositivi di fissaggio. I numeri tra parentesi si riferiscono al carico di carrelli su 4 ruote.

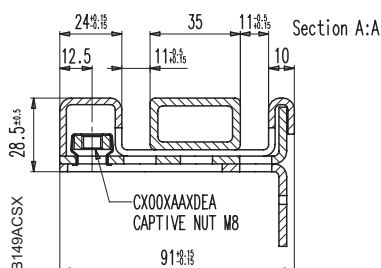
自立式钢/不锈钢导轨 1000≤TB&lt;1200 - R

选件

## K2R CAR DOOR



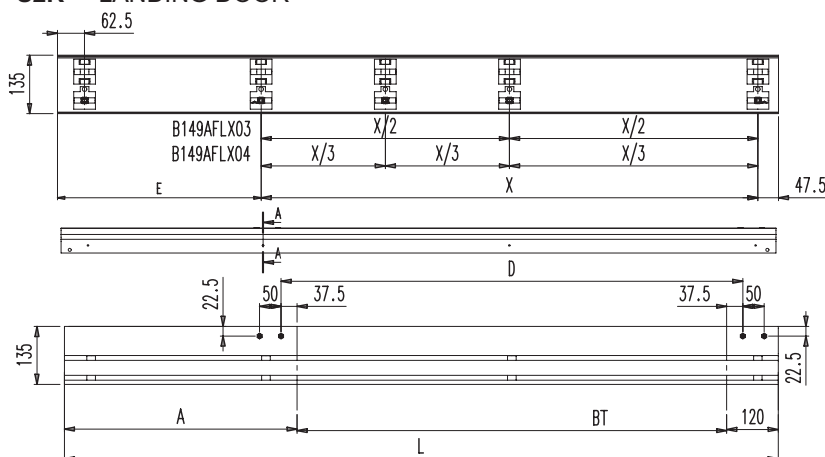
A	TB/2+40
E	TB/2+85
L	1.5TB+80
X	TB-90



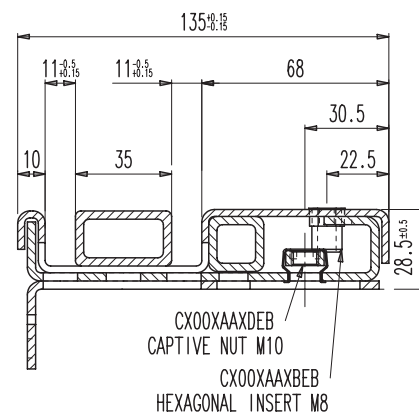
B149ACXSX03	TB=1000
B149ACXSX04	1000<TB<1200

2000 Kg (8000 Kg) \*

## S2R LANDING DOOR



Section A:A



A	TB/2+42
D	TB+75
E	TB/2-30.5
L	1.5TB+162
X	TB+145

B149AFLX03	TB=1000
B149AFLX04	1000<TB≤1150

2000 Kg (8000 Kg) \*

B149AFLX

\* The load mentioned above refers exclusively to a vertically applied static force on the weakest point of the sills, starting from the assumption of rigidly fixed sill supports. Any other consideration as far as the method of fixation (of the sill supports) is concerned is excluded. The figures given into brackets refer to the load of carriages with four wheels.

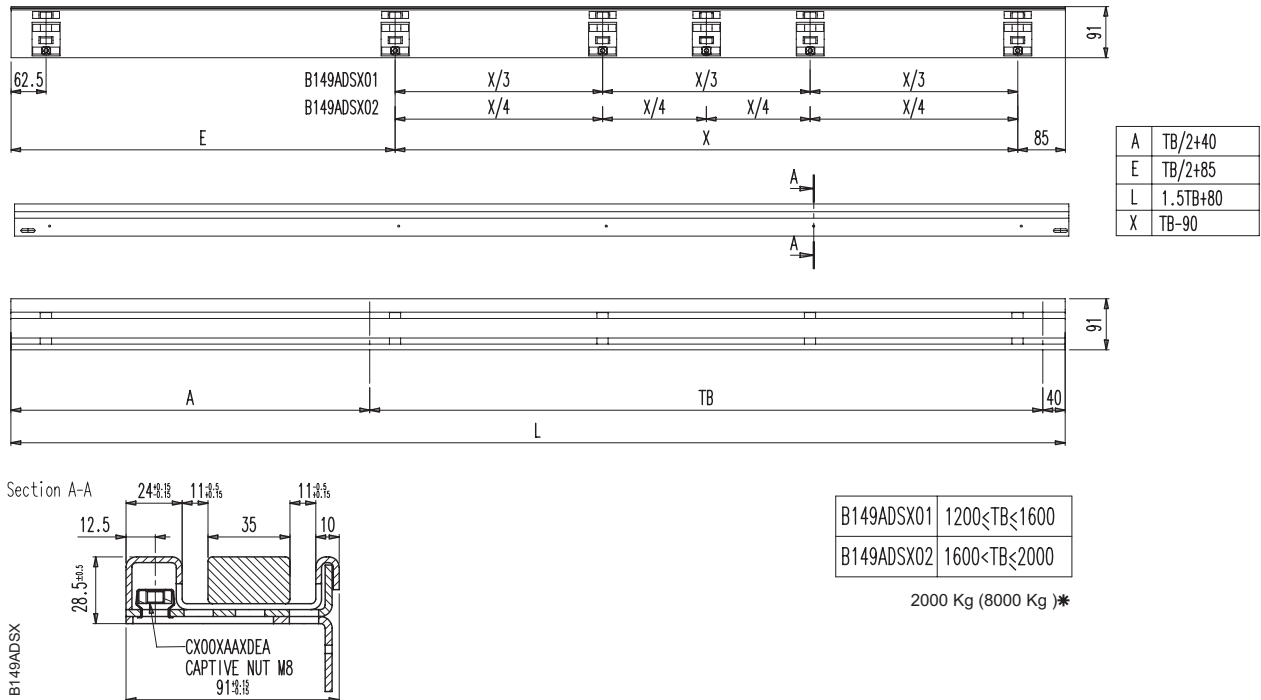
\* Die oben genannte Belastung bezieht sich ausschließlich auf eine senkrecht auf die Schwellen wirkende, statische Last, welche an der ungünstigsten Stelle auf einen steifen Befestigungswinkel wirkt. Betrachtungen zur Befestigungsmethode (des Winkels) sind dabei nicht berücksichtigt. Die Angaben in Klammern beziehen sich auf die Belastung durch vierrädrige Wagen.

\* La portata sopra indicata si riferisce esclusivamente alle soglie con carico statico applicato verticalmente sulla parte più cedevole e con fissaggio con staffe rigide. Sono pertanto escluse considerazioni sui dispositivi di fissaggio. I numeri tra parentesi si riferiscono al carico di carrelli su 4 ruote.

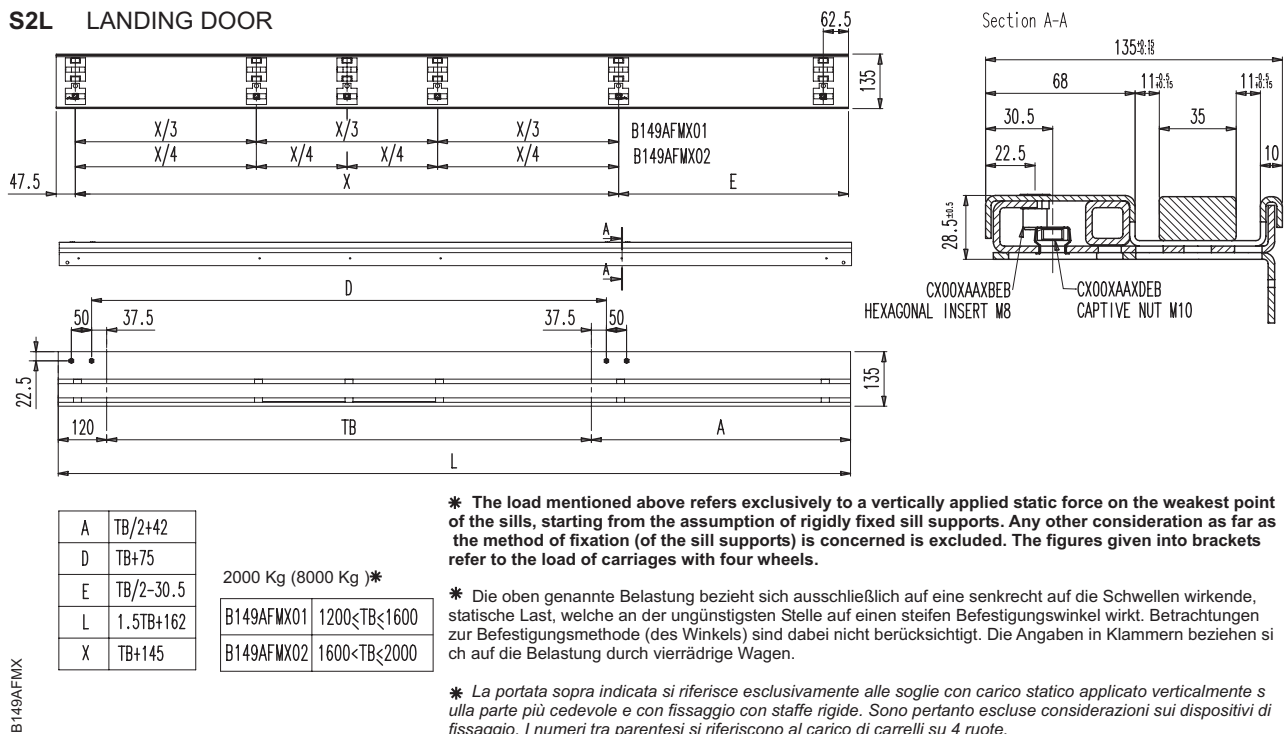
自立式钢/不锈钢导轨  $1200 \leq TB \leq 2000 - L$

选件

K2L CAR DOOR



**S2L** LANDING DOOR



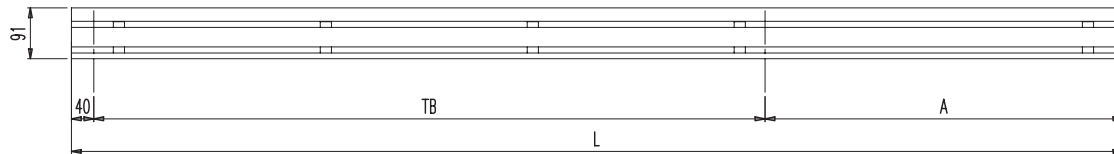
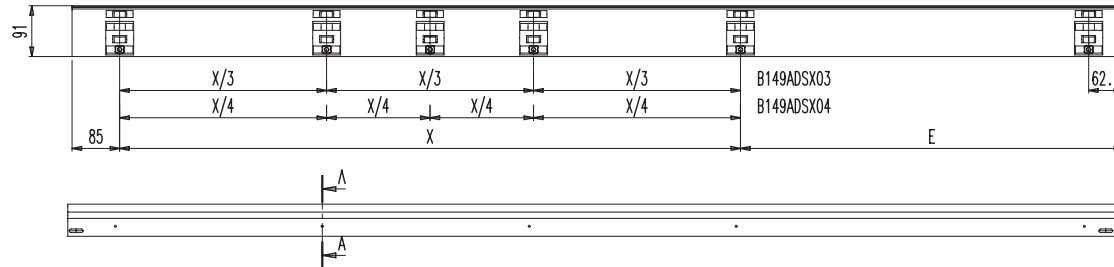
\* The load mentioned above refers exclusively to a vertically applied static force on the weakest point of the sills, starting from the assumption of rigidly fixed sill supports. Any other consideration as far as the method of fixation (of the sill supports) is concerned is excluded. The figures given into brackets refer to the load of carriages with four wheels.

\* Die oben genannte Belastung bezieht sich ausschließlich auf eine senkrecht auf die Schwellen wirkende, statische Last, welche an der ungünstigsten Stelle auf einen steifen Befestigungswinkel wirkt. Betrachtungen zur Befestigungsmethode (des Winkels) sind dabei nicht berücksichtigt. Die Angaben in Klammern beziehen sich auf die Belastung durch vierrädrige Wagen.

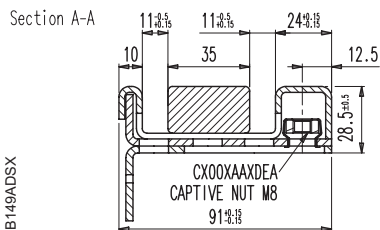
\* La portata sopra indicata si riferisce esclusivamente alle soglie con carico statico applicato verticalmente sulla parte più cedevole e con fissaggio con staffe rigide. Sono pertanto escluse considerazioni sui dispositivi di fissaggio. I numeri tra parentesi si riferiscono al carico di carrelli su 4 ruote.

自立式钢/不锈钢导轨 1200≤TB≤2000 - R

选项

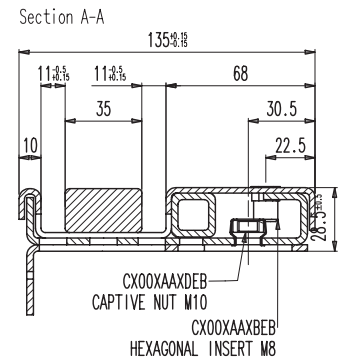
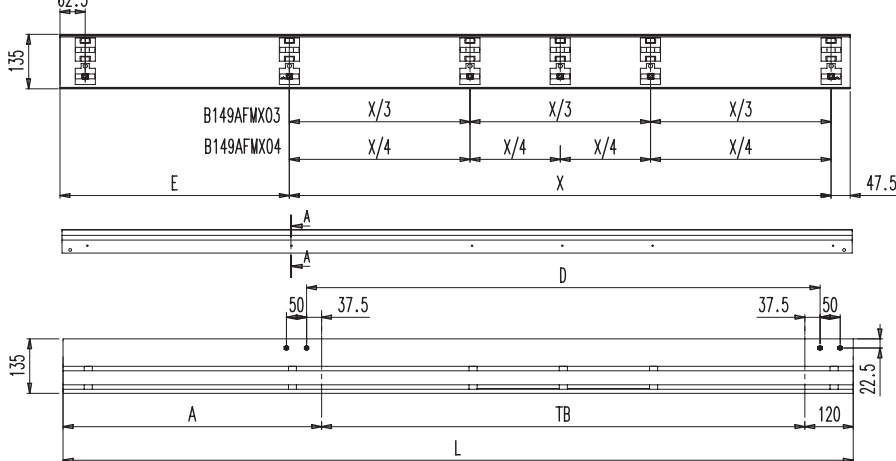
**K2R CAR DOOR**

A	TB/2+40
E	TB/2+85
L	1.5TB+80
X	TB-90



B149ADXS03	1200≤TB≤1600
B149ADXS04	1600<TB≤2000

2000 Kg (8000 Kg) \*

**S2R LANDING DOOR**

A	TB/2+42
D	TB+75
E	TB/2-30.5
L	1.5TB+162
X	TB+145

2000 Kg (8000 Kg) \*

B149AFMX03	1200≤TB≤1600
B149AFMX04	1600<TB≤2000

\* The load mentioned above refers exclusively to a vertically applied static force on the weakest point of the sills, starting from the assumption of rigidly fixed sill supports. Any other consideration as far as the method of fixation (of the sill supports) is concerned is excluded. The figures given into brackets refer to the load of carriages with four wheels.

\* Die oben genannte Belastung bezieht sich ausschließlich auf eine senkrecht auf die Schwellen wirkende, statische Last, welche an der ungünstigsten Stelle auf einen steifen Befestigungswinkel wirkt. Betrachtungen zur Befestigungsmethode (des Winkels) sind dabei nicht berücksichtigt. Die Angaben in Klammern beziehen sich auf die Belastung durch vierrädrige Wagen.

\* La portata sopra indicata si riferisce esclusivamente alle soglie con carico statico applicato verticalmente sulla parte più cedevole e con fissaggio con staffe rigide. Sono pertanto escluse considerazioni sui dispositivi di fissaggio. I numeri tra parentesi si riferiscono al carico di carrelli su 4 ruote.

B149AFMX

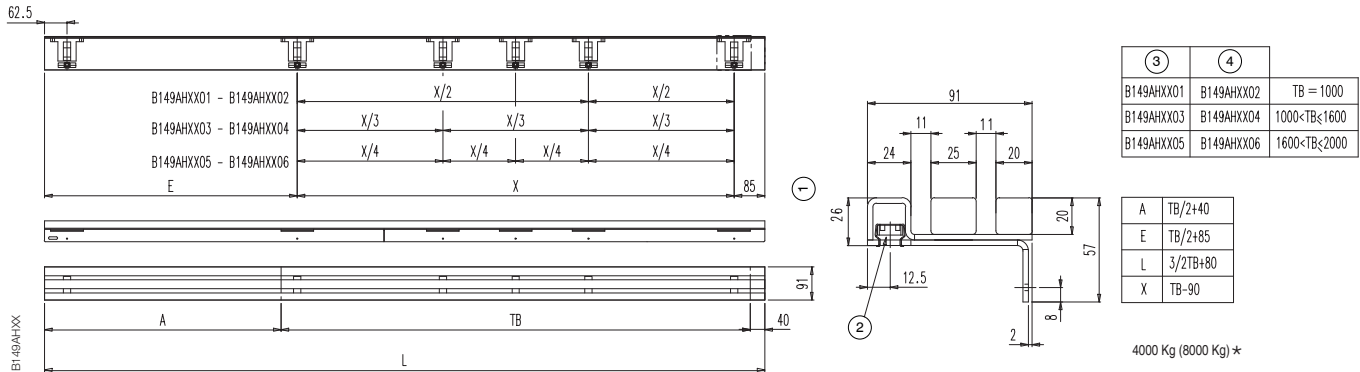
地坎

K-S 2L

高强度地坎 - L

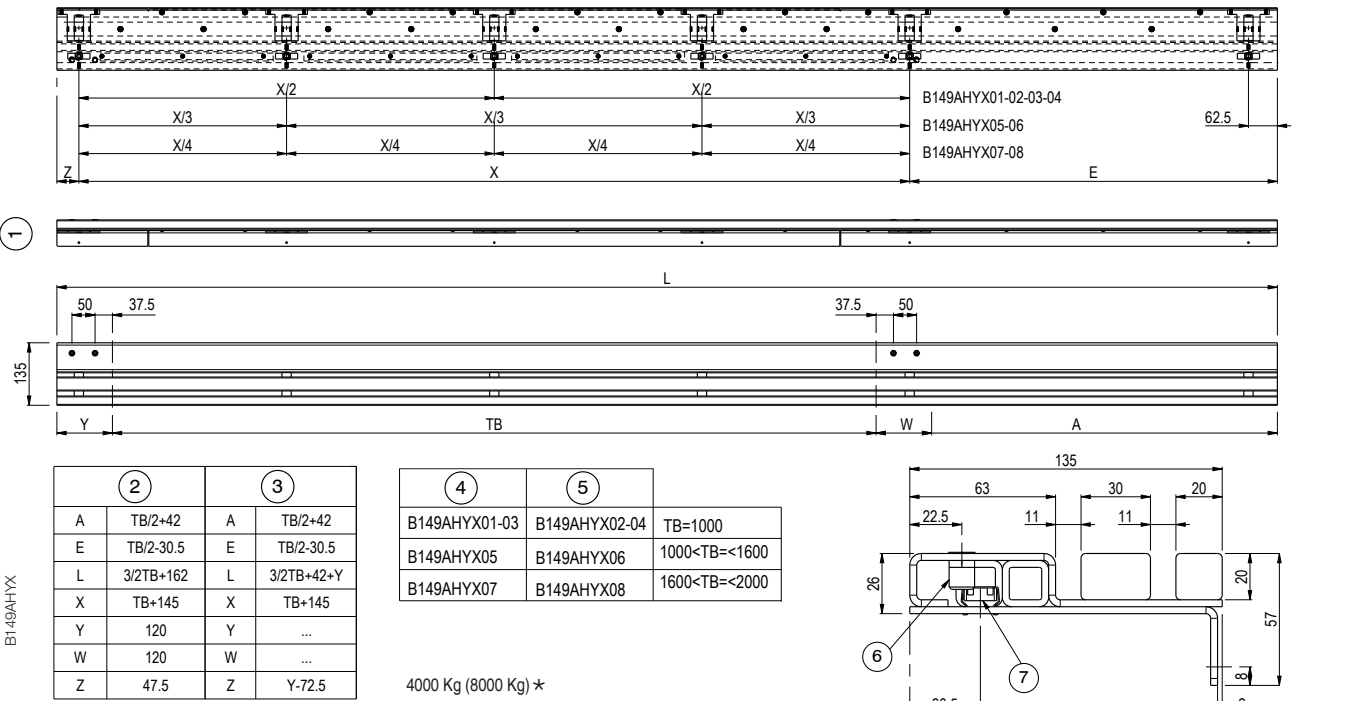
选件

K 2L 轿门



1	打浆边缘	2	方形锁紧螺母 M8	3	L = 如图所示	4	R = 镜像
---	------	---	-----------	---	----------	---	--------

S 2L 层门



1	打浆边缘	2	2000 B-G 方案	3	入口方案	4	L = 如图所示
5	R = 镜像	6	带六角头 M8 的薄断面插件	7	方形锁紧螺母 M10	Y	关门边框尺寸
W	开门边框尺寸						

! 上述载荷专指在门槛上的最弱点垂直施加的静力，在窗台的最薄弱的环节，从假设刚性固定的门槛支架开始。只要是关于（门槛支架）的固定方法，任何其他考量均可排除。括号内提供的数字是指四轮门滑板的载荷。

! L as drawn, R mirrored

有框玻璃

2 L-R

有框玻璃

选件

类型	2L-R	3L-R	两扇中分	四扇中分	六扇中分
净开门宽	TH				
1000	2000-2500	2000-2500	2000-2500	2000-2300	-
1100	2000-2500	2000-2500	2000-2500	2000-2300	-
1200	2000-2500	2000-2500	2000-2500	2000-2300	-
1300	2000-2500	2000-2500	2000-2500	2000-2500	-
1400	2000-2500	2000-2500	2000-2500	2000-2500	2000-2200
1500	2000-2500	2000-2500	2000-2500	2000-2500	2000-2300
1600	2000-2500	2000-2500	2000-2500	2000-2500	2000-2300
1700	2000-2500	2000-2500	2000-2500	2000-2500	2000-2300
1800	2000-2500	2000-2500	2000-2500	2000-2500	2000-2300
1900	-	-	-	2000-2500	2000-2300
2000	-	-	-	2000-2500	2000-2300
2100	-	-	-	2000-2500	2000-2300
2200	-	-	-	2000-2500	2000-2300
2300	-	-	-	2000-2500	2000-2300
2400	-	-	-	2000-2500	2000-2300
2500	-	-	-	2000-2500	2000-2300

! 用于防火方案 EN 81-58 E120 TH<2500

有框玻璃

2 L-R

有框玻璃 – SHIELD PRO

选项

类型	2扇门左开/右开	中分2扇门	中分4扇门
净开门宽	TH		
800*	2000-2300	2000-2300	2000-2300
900*	2000-2300	2000-2300	2000-2300
1000	2000-2300	2000-2300	2000-2300
1100	2000-2300	2000-2300	2000-2300
1200	2000-2300	2000-2300	2000-2300
1300	2000-2300	2000-2300	2000-2300
1400	2000-2300	2000-2300	2000-2300
1500	–	–	2000-2300
1600	–	–	2000-2300
1700	–	–	2000-2300
1800	–	–	2000-2300
1900	–	–	2000-2300
2000	–	–	2000-2300
2100	–	–	2000-2300
2200	–	–	2000-2300
2300	–	–	2000-2300
2400	–	–	2000-2300
2500	–	–	2000-2300
2600	–	–	2000-2300
2700	–	–	2000-2300
2800	–	–	2000-2300

! \*基于定制

! 仅层门

全玻璃

2 L-R

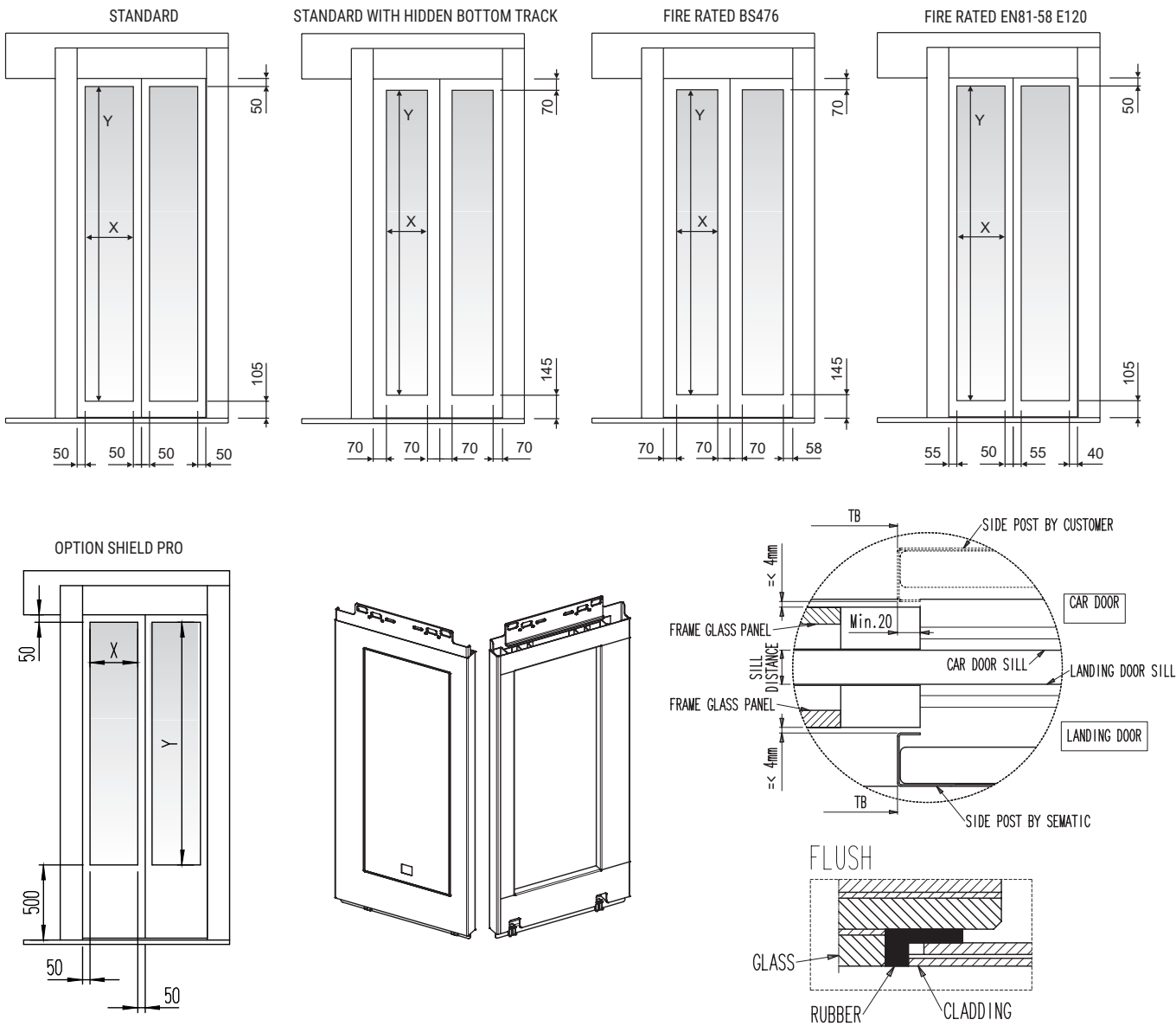
全玻璃

选件

类型	2L-R	3L-R	2Z 两扇中分	四扇中分	六扇中分
净开门宽	TH				
1000	2000-2300	2000-2300	2000-2300	2000-2300	-
1100	2000-2300	2000-2300	2000-2300	2000-2300	-
1200	2000-2500	2000-2300	2000-2500	2000-2300	-
1300	2000-2500	2000-2300	2000-2500	2000-2300	-
1400	2000-2500	2000-2300	2000-2500	2000-2300	2000-2200
1500	2000-2500	2000-2300	2000-2500	2000-2300	2000-2300
1600	2000-2500	2000-2300	2000-2500	2000-2300	2000-2300
1700	2000-2500	2000-2300	2000-2500	2000-2300	2000-2300
1800	2000-2500	2000-2500	2000-2500	2000-2300	2000-2300
1900	-	-	-	2000-2300	2000-2300
2000	-	-	-	2000-2300	2000-2300
2100	-	-	-	2000-2300	2000-2300
2200	-	-	-	2000-2300	2000-2300
2300	-	-	-	2000-2300	2000-2300
2400	-	-	-	2000-2500	2000-2300
2500	-	-	-	2000-2500	2000-2300

有框玻璃门板的结构

选项



当可视窗口小于标准设计时，请结合图示的位置提供X值和Y值

X= (输入数值)

Y = (输入数值)

摘录自...

思迈特声明电梯玻璃门板的一致性 (2014/33/EU)

电梯玻璃门板符合 EN81-1/2:1998, EN81-20:2014

1 - 门板仅由思迈特包层

2 - 用于轿门：客户自备

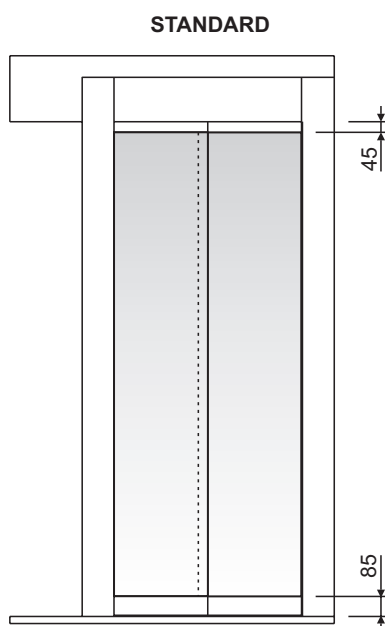
3 - 在“Shield Pro”选项时，轿门也需要相应定制。轿门门板下边框高度应不小于500mm

## 全玻璃结构

S 2L-R

## 全玻璃门板的结构

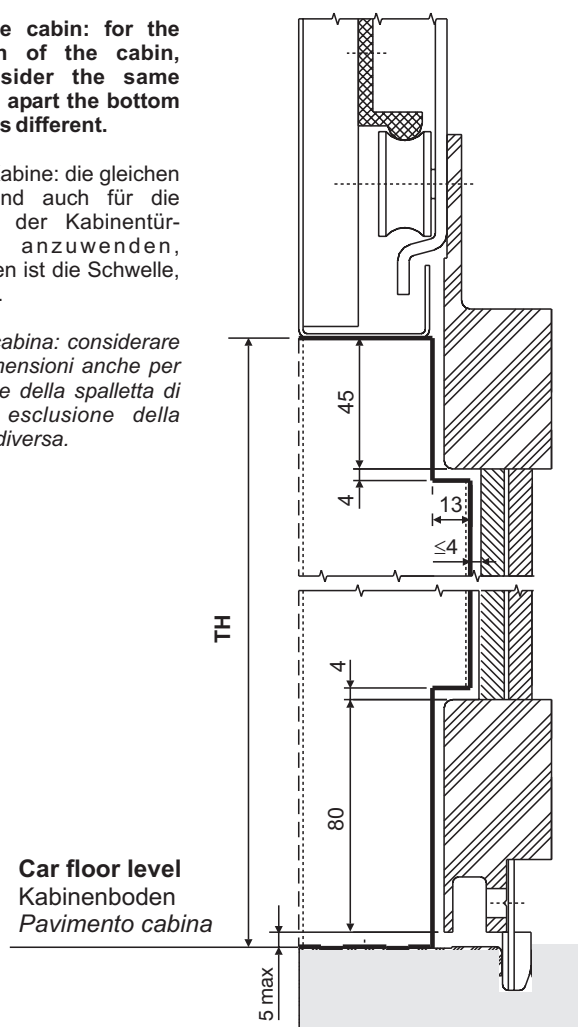
选件



**Note for the cabin: for the construction of the cabin, please consider the same dimensions, apart the bottom track which is different.**

Hinweis für Kabine: die gleichen Ausmaße sind auch für die Konstruktion der Kabinentür-Innenseite anzuwenden, ausgenommen ist die Schwelle, die anders ist.

*Nota per la cabina: considerare le stesse dimensioni anche per la costruzione della spalletta di cabina, ad esclusione della soglia che è diversa.*



! 图纸显示的是S2Z 门  
• 相同的考量适用于其他电梯门型号

摘录自...

思迈特声明电梯玻璃门板的一致性 (2014/33/EU)

电梯玻璃门板符合 EN81-1/2:1998, EN81-20:2014

1 - 门板仅由思迈特包层

2 - 用于轿门: 客户自备

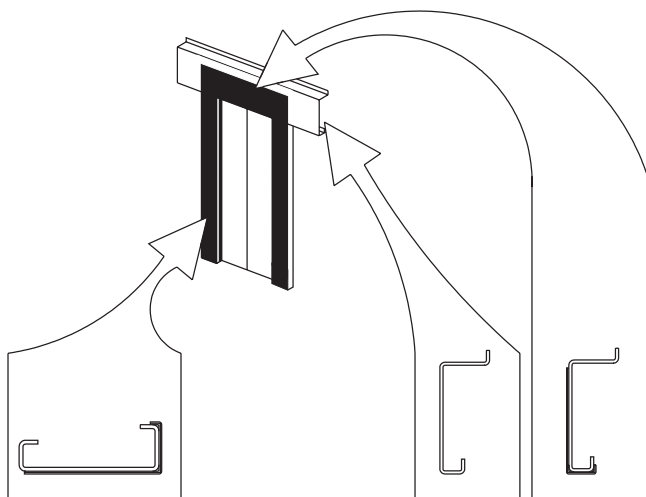
## 包层

S 2L-R

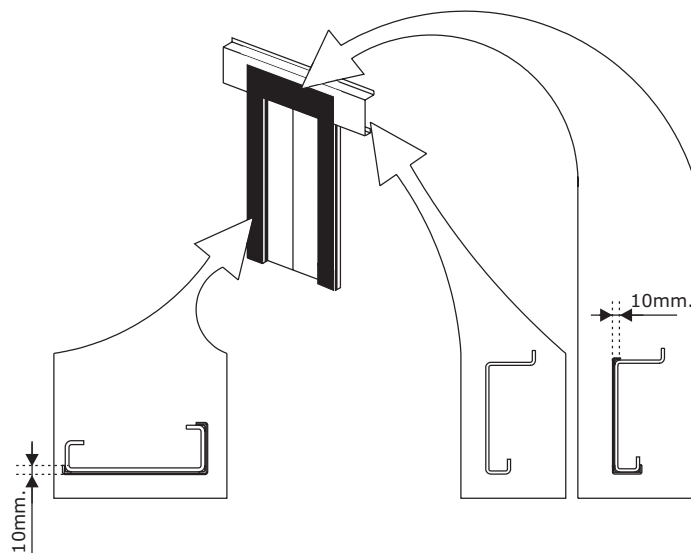
层门和门口结构显性包层

选项

- ☐ **CLADDING TYPE "A" (STANDARD)**  
 VERKLEIDUNG TYP "A" (STANDARD)  
 RIVESTIMENTO TIPO "A" (STANDARD)



- ☐ **CLADDING TYPE "A2"**  
 VERKLEIDUNG TYP "A2"  
 RIVESTIMENTO TIPO "A2"



- 图纸显示的是 S2Z 门
- 相同的考量适用于其他电梯门型号

应用范围

S 2L-R

层门关门装置应用范围

单旋转关门器

	A1 - cod. B122ABVX
---	--------------------

	A2 - cod. B122ABNX
---	--------------------

双旋转关门器

	B1 - cod. B122ABVX
---	--------------------

	B2 - cod. B122ABYX
--	--------------------

	C - cod. B122ABNX
---	-------------------

对重

	K - cod. B062AACX
---	-------------------

应用范围

S 2L-R


		TB										
2L-R	2000≤TH≤2500	1000	1100	1200	1300	1400	1500	1600	1700	1800	1900	2000
		A2	A2	K	K	K	K	K	K	K	K	K

		TB										
3L-R	2000≤TH≤2500	1000	1100	1200	1300	1400	1500	1600	1700	1800	1900	2000
		B2	B2	K	K	K	K	K	K	K	K	K

		TB										
2Z	2000≤TH≤2500	1000	1100	1200	1300	1400	1500	1600	1700	1800	1900	2000
		A1	A1	B1	B1	K	K	K	K	K	K	K

		TB												
4Z	2000≤TH≤2500	1000	1100	1200	1300	1400	1500	1600	1700	1800	1900	2000	2100	2200
		A1	A1	A1	C	C	C	C	B1	B1	B1	B1	B1	B1
	2000≤TH≤2500	2300	2400	2500	2600	2700	2800	2900	3000	3100	3200	3300	3400	3500
		C	K	K	K	K	K	K	K	K	K	K	K	K

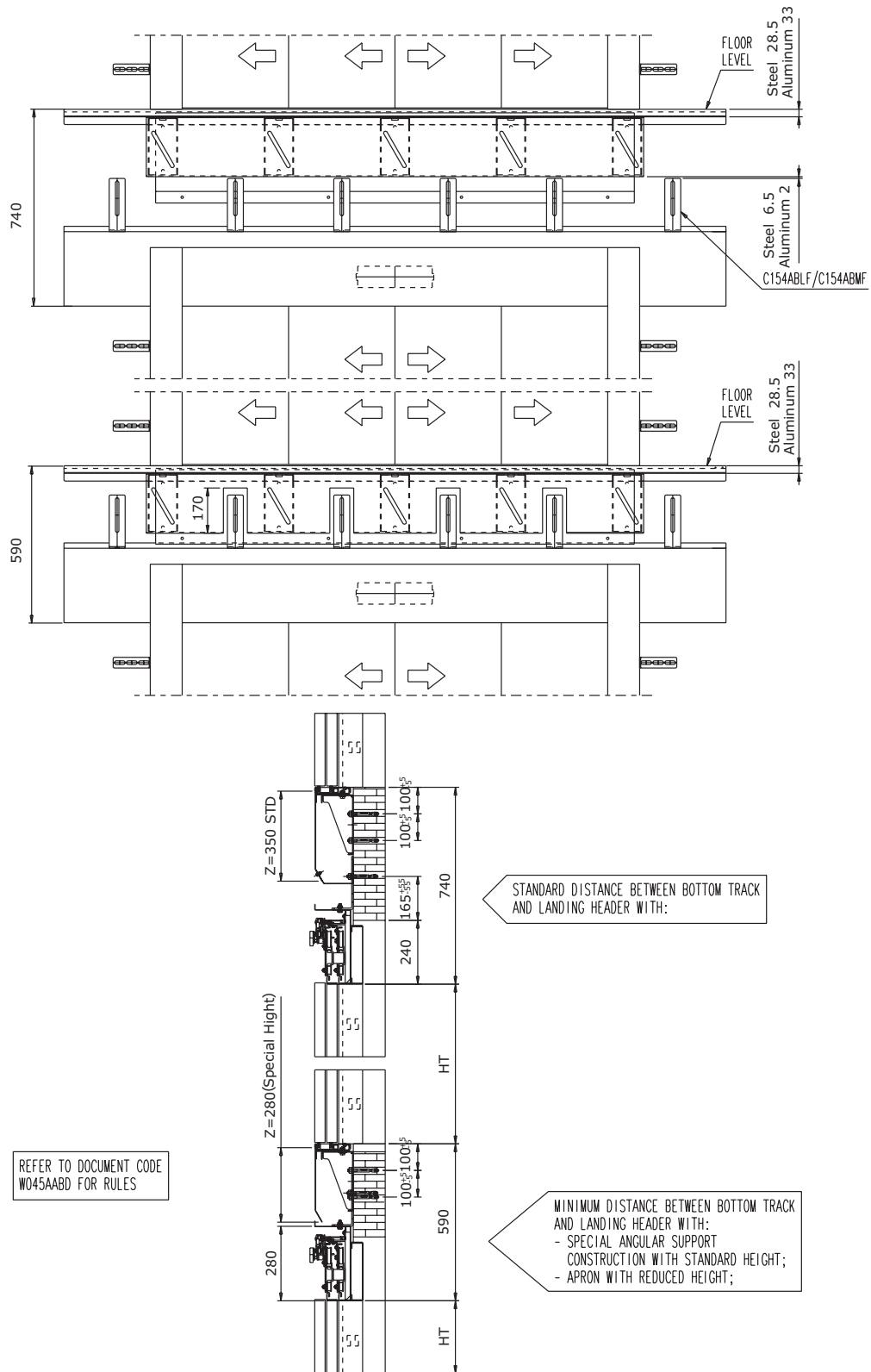
		TB										
6Z	2000≤TH≤2500	1400	1500	1600	1700	1800	1900	2000	2100	2200	2300	2400
		A1	A1	A1	A1	A1	B2	B2	B2	B2	B2	K
	2000≤TH≤2500	2500	2600	2700	2800	2900	3000	3100	3200	3300	3400	3500
		K	K	K	K	K	K	K	K	K	K	K

 当TH>2500时, 关门装置必须为重锤

## 楼层结构

S 2L-R

## 最小楼层间距



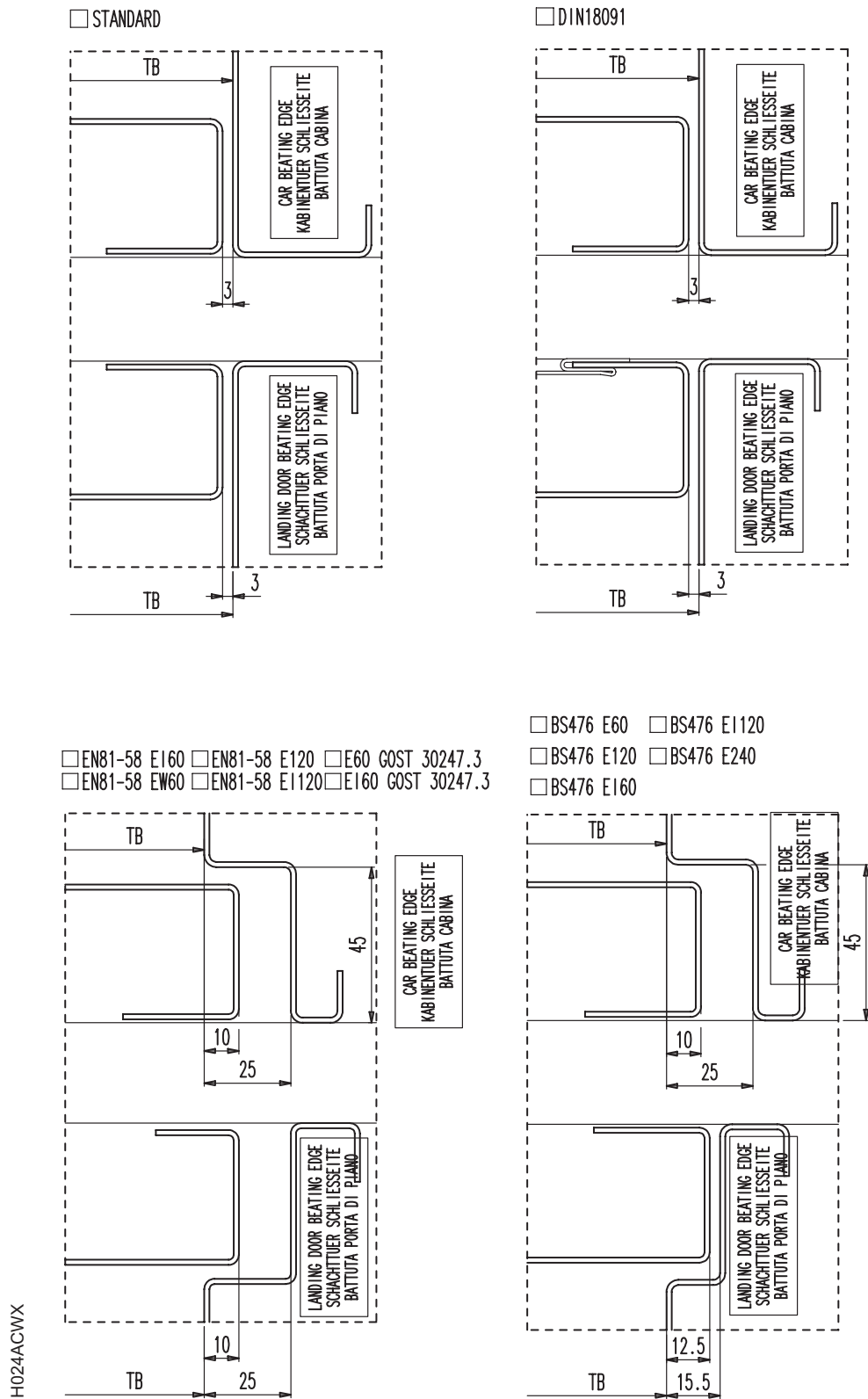
<p>图示为S4Z门

- 相同的考量适用于其他电梯门型号

## 打浆曲线

S2 L-R

打浆曲线示意图



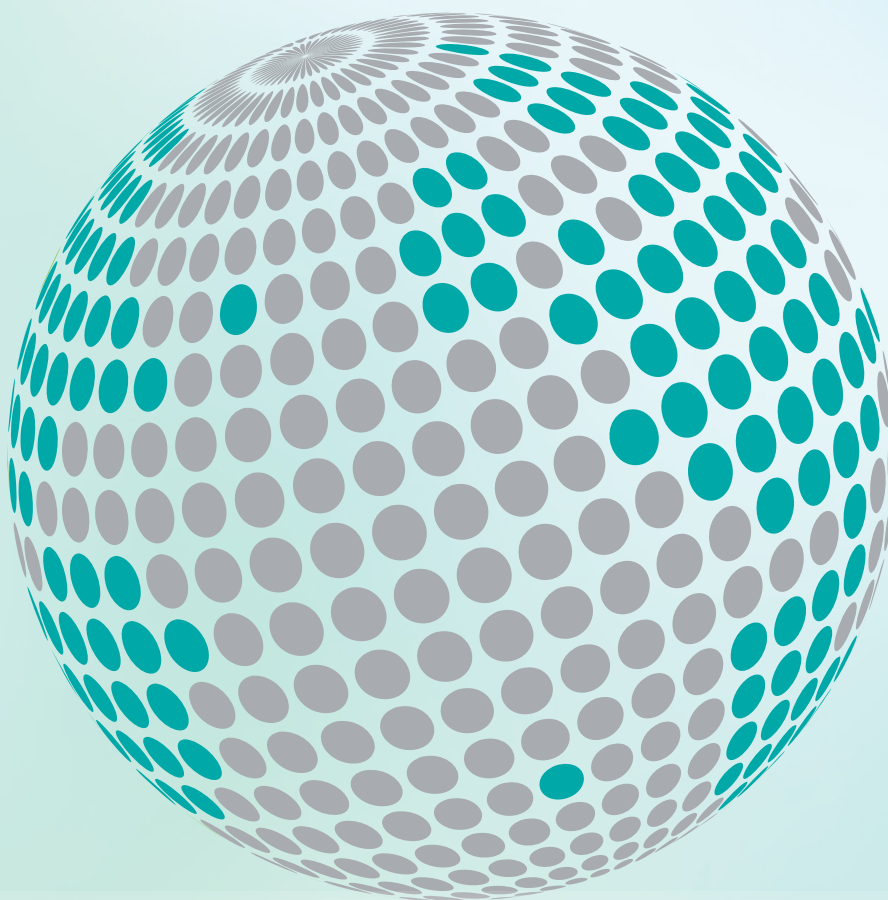
我们的组件仅供ELEVATOR使用







**YOUR GLOBAL PARTNER FOR COMPONENTS,  
MODULES AND SYSTEMS IN THE ELEVATOR INDUSTRY**



[www.wittur.com](http://www.wittur.com)

More information  
about Wittur Group  
available on-line.



**SELCOM®**  
a WITTUR brand

**Liftmaterial**  
a WITTUR brand

**sematic®**  
a WITTUR brand