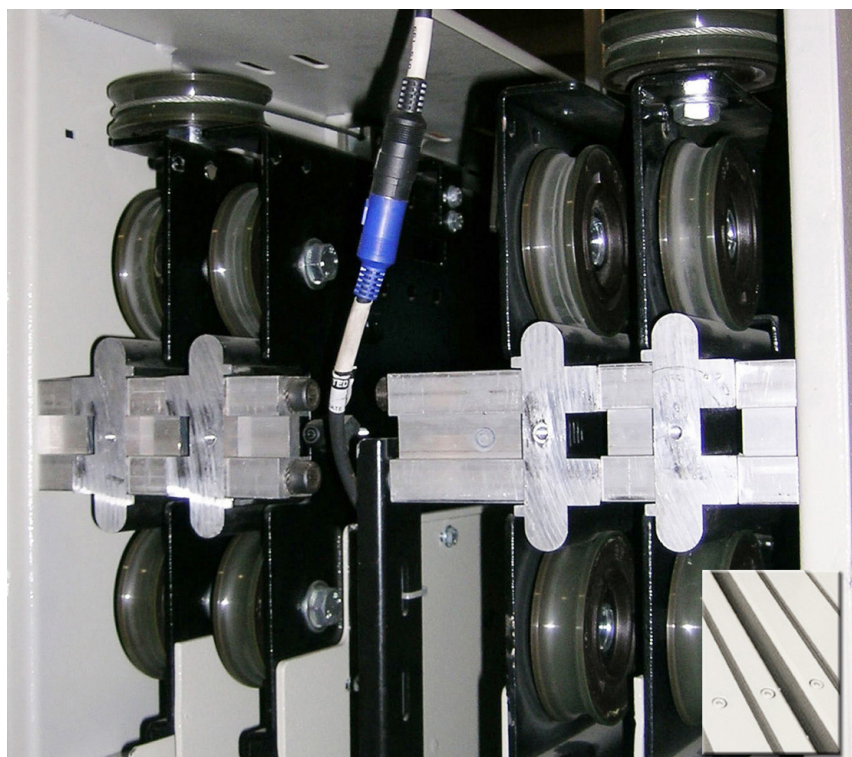


2000 HD

It satisfies the requirements for large lifts and intensive industrial use

Code	TC.2.004503.EN
Edition	18 February 2006
Version	18 May 2017
SEM ID	917-310-000

mod:K-S 3L-R



No part of this publication may be reproduced or translated, even in part, without prior written permission from WITTUR.

Subject to change without notice!

info@wittur.com
www.wittur.com

© Copyright WITTUR 2017

INDEX

COMPLETE RANGE FOR SEMATIC 2000 HD DOORS5

FRONT AND SIDE VIEW OF CAR DOOR - L6

FRONT AND SIDE VIEW OF CAR DOOR - R.....7

FRONT AND SIDE VIEW OF LANDING DOOR - L8

FRONT AND SIDE VIEW OF LANDING DOOR - R9

LANDING AND CAR DOOR COUPLING SCHEME.....10

FRAMED GLASS11

CONSTRUCTION WITH FRAMED GLASS PANELS FOR SIDE OPENING DOORS12

OVERALL DIMENSIONS FOR DOORS.....13

DOOR CONFORMITY RULES IN RESPECT OF EN 81-20/5014

INDEX

RANGE

3 L-R

COMPLETE RANGE FOR SEMATIC 2000 HD DOORS

Type	2L-R	3L-R	4Z	6Z
TB	TH			
1800	2000-4000	2000-4000	2000-4500	-
1900	2000-4000	2000-4000	2000-4500	-
2000	2000-4000	2000-4000	2000-4500	-
2100	2000-4000	2000-4000	2000-4500	-
2200	2000-4000	2000-4000	2000-2500	-
2300	2000-4000	2000-4000	2000-4500	-
2400	-	2000-4000	2000-4500	-
2500	-	2000-4000	2000-4500	-
2600	-	2000-4000	2000-4500	-
2700	-	2000-4000	2000-4500	-
2800	-	2000-4000	2000-4500	-
2900	-	2000-4000	2000-4500	-
3000	-	2000-4000	2000-4500	2000-4500
3100	-	2000-4000	2000-4500	2000-4500
3200	-	2000-4000	2000-4500	2000-4500
3300	-	2000-4000	2000-4500	2000-4500
3400	-	2000-4000	2000-4500	2000-4500
3500	-	2000-4000	2000-4500	2000-4500
3600	-	-	2000-4500	2000-4500
3700	-	-	2000-4500	2000-4500
3800	-	-	2000-4500	2000-4500
3900	-	-	2000-4500	2000-4500
4000	-	-	2000-4500	2000-4500
4100	-	-	2000-4500	2000-4500
4200	-	-	2000-4500	2000-4500
4300	-	-	2000-4500	2000-4500
4400	-	-	2000-4500	2000-4500
4500	-	-	2000-4500	2000-4500

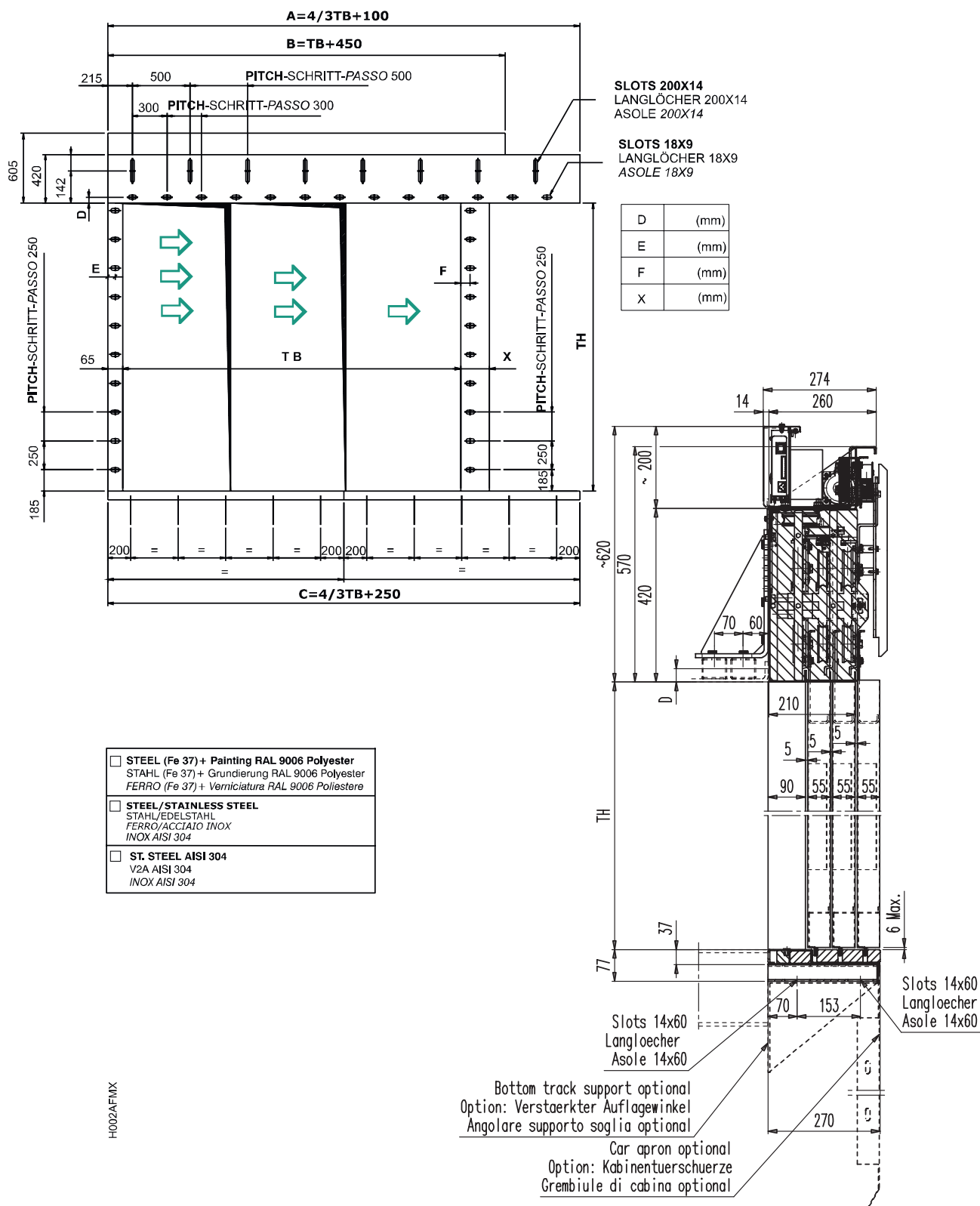


2R/L CUSTOM

CAR DOOR

K 3L

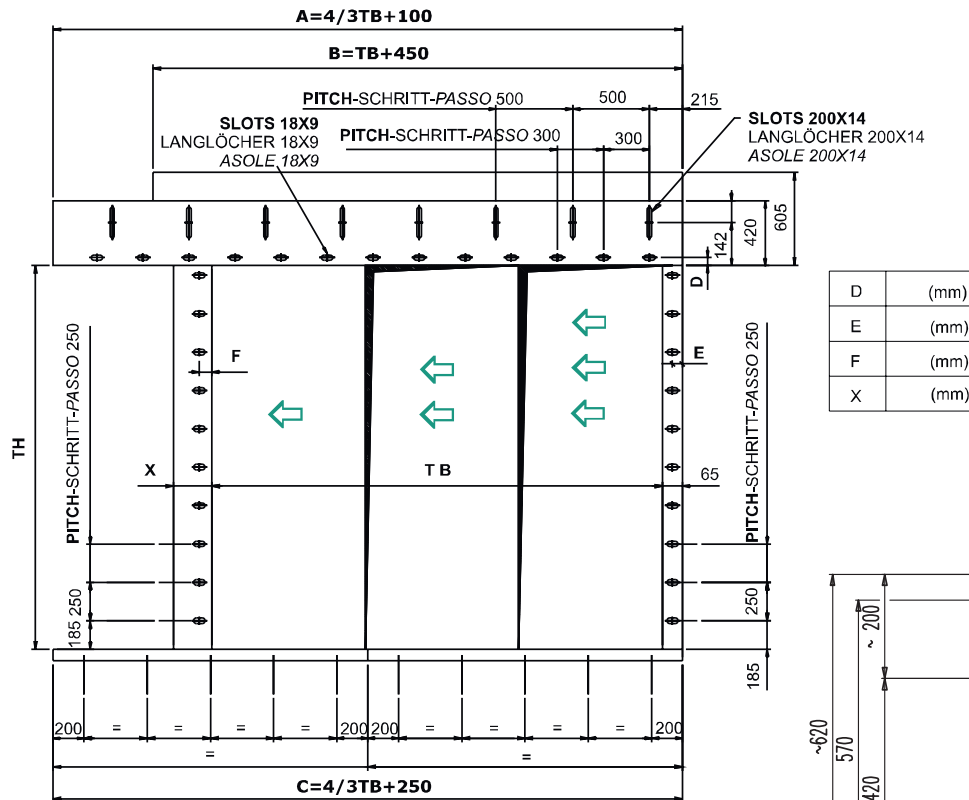
FRONT AND SIDE VIEW OF CAR DOOR - L



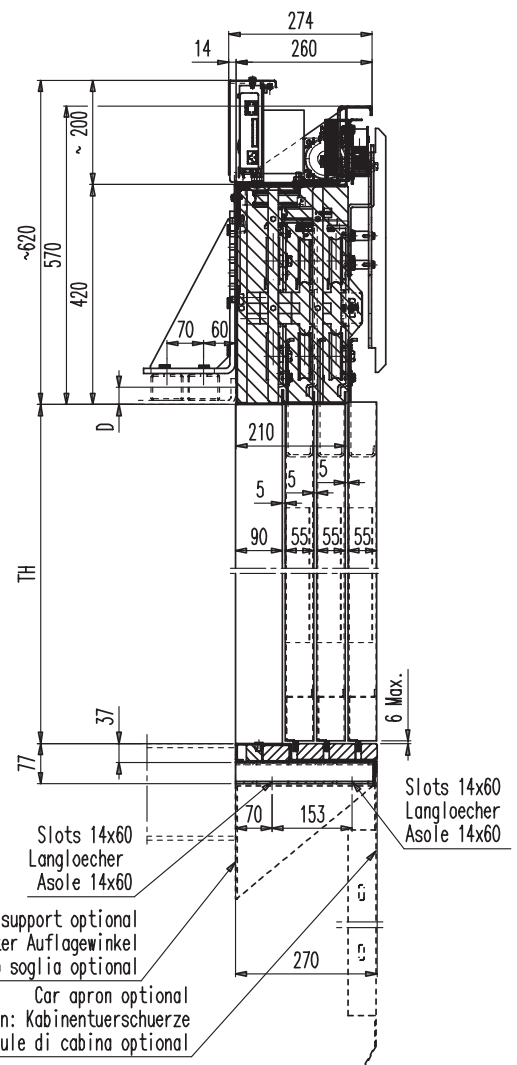
CAR DOOR

K 3R

FRONT AND SIDE VIEW OF CAR DOOR - R



D	(mm)
E	(mm)
F	(mm)
X	(mm)



- ☐ **STEEL (Fe 37) + Painting RAL 9006 Polyester**
STAHL (Fe 37) + Grundierung RAL 9006 Polyester
FERRO (Fe 37) + Verniciatura RAL 9006 Poliestere
- ☐ **STEEL/STAINLESS STEEL**
STAHL/EDL STAHL
FERRO/ACCIAIO INOX
INOX AISI 304
- ☐ **ST. STEEL AISI 304**
V2A AISI 304
INOX AISI 304

H002AFMX

Bottom track support optional
Option: Verstaerkter Auf lagewinkel
Angolare supporto soglia optional

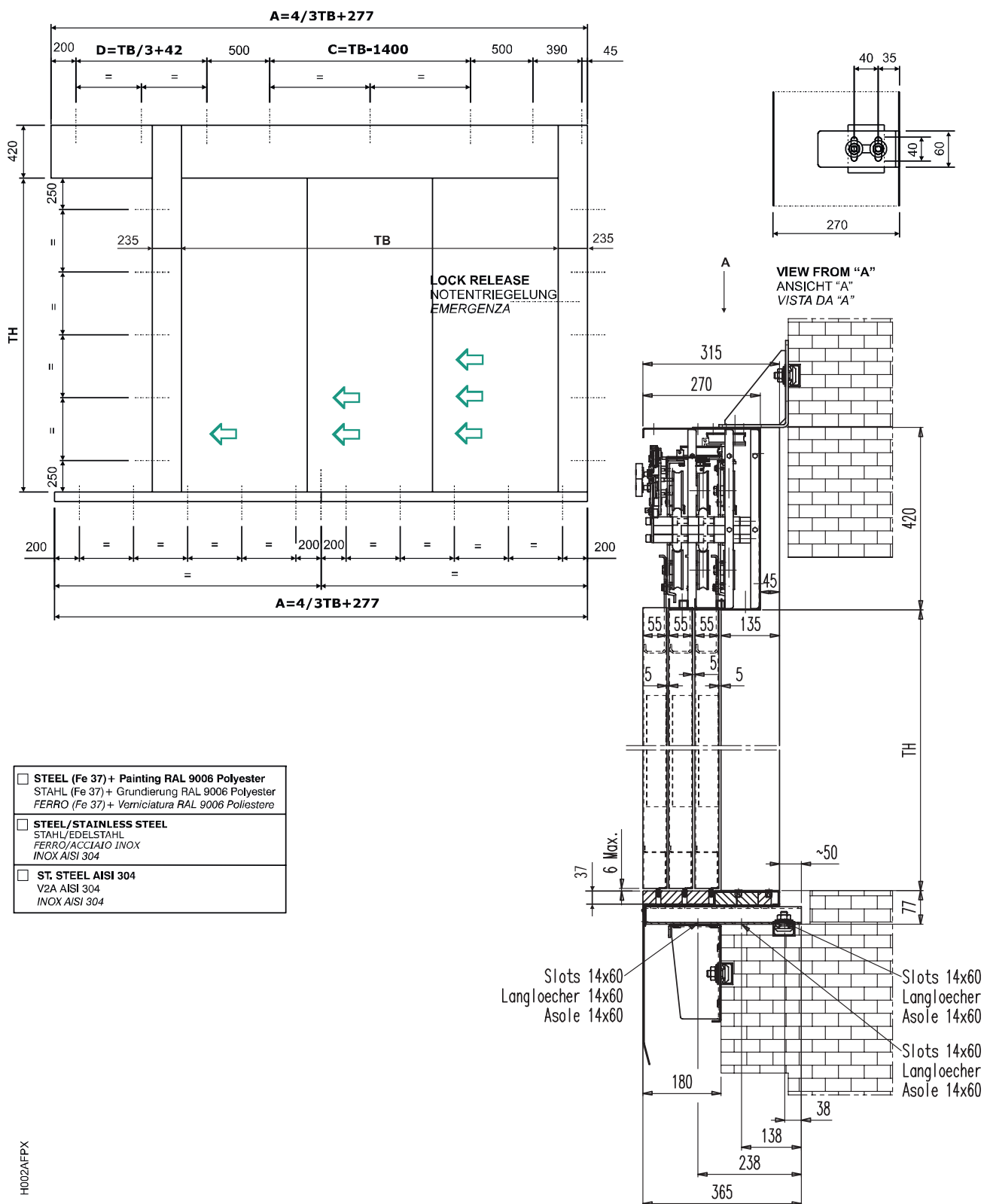
Car apron optional
Option: Kabinentuerschuerze
Grembiule di cabina optional

www.wittur.com
© WITTUR • All rights reserved

LANDING DOOR

S 3L

FRONT AND SIDE VIEW OF LANDING DOOR - L

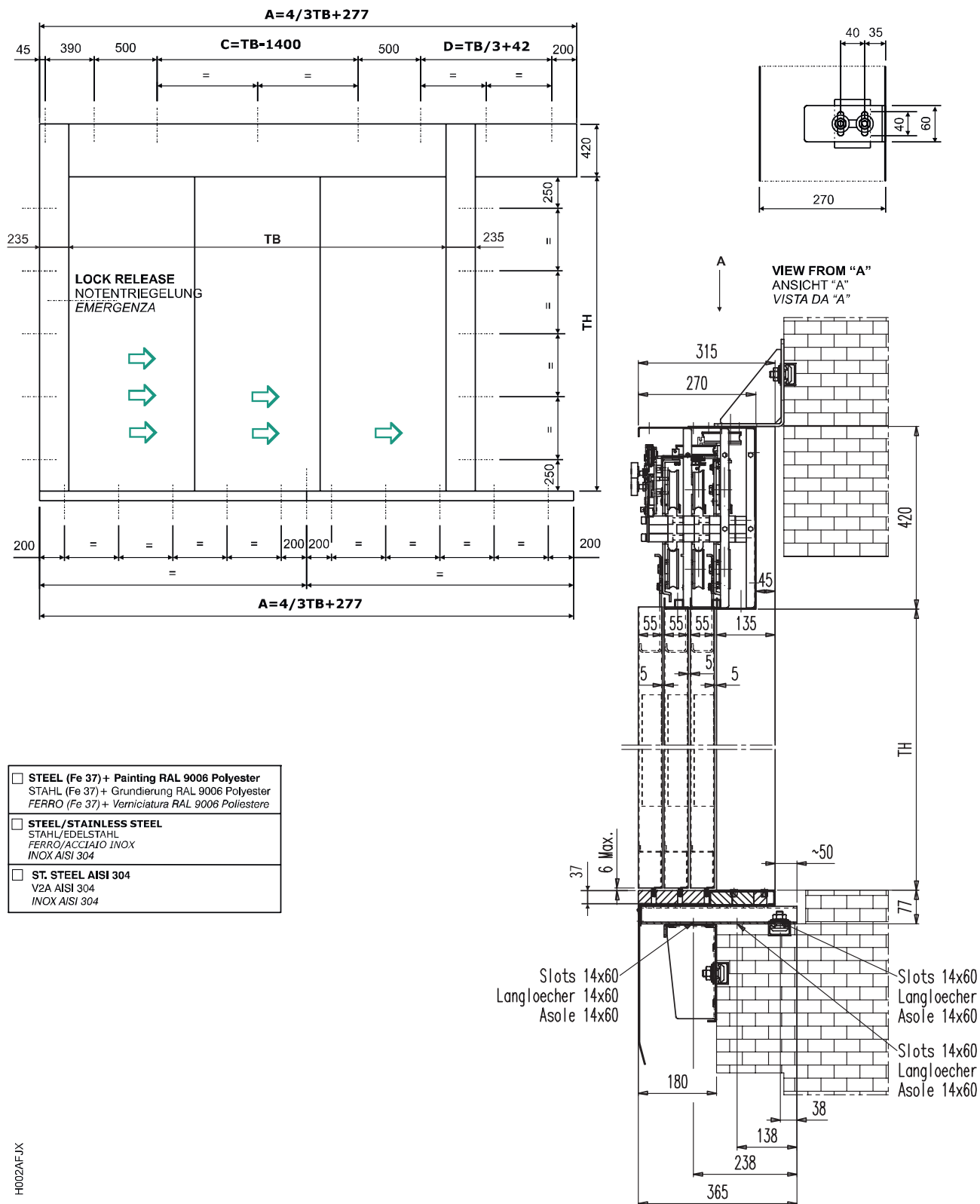


H002AFPX

LANDING DOOR

S 3R

FRONT AND SIDE VIEW OF LANDING DOOR - R



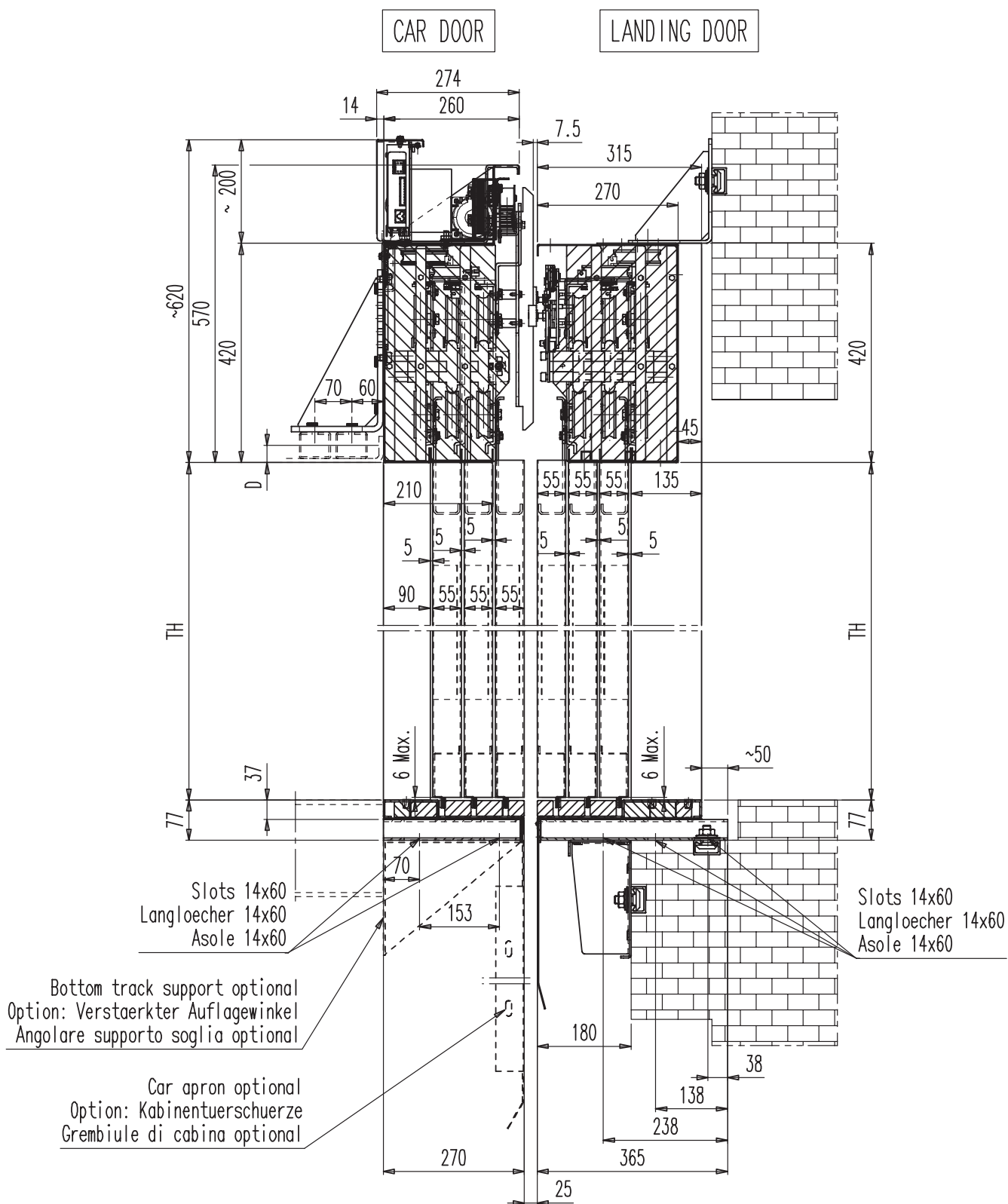
-1002AFJX

www.wittur.com
© WITTUR • All rights reserved

COUPLING SCHEME

3L-R

LANDING AND CAR DOOR COUPLING SCHEME



FRAMED GLASS

3 L-R

FRAMED GLASS

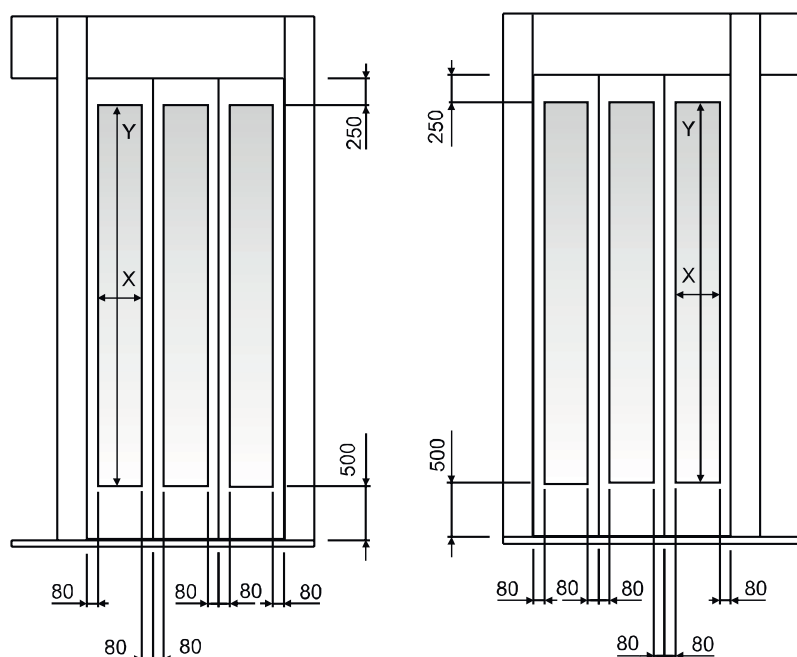
Type	2L-R	3L-R	4Z	6Z
TB	TH			
1800	-	-	2000-2900	-
1900	-	-	2000-2900	-
2000	-	2000-2900	2000-2900	-
2100	-	2000-2900	2000-2900	-
2200	-	2000-2900	2000-2900	-
2300	-	2000-2900	2000-2900	-
2400	-	2000-2900	2000-2900	-
2500	-	2000-2900	2000-2900	-
2600	-	-	2000-2900	-
2700	-	-	2000-2900	-
2800	-	-	2000-2900	-
2900	-	-	2000-2900	-
3000	-	-	2000-2900	2000-2900
3100	-	-	2000-2900	2000-2900
3200	-	-	2000-2900	2000-2900
3300	-	-	2000-2900	2000-2900
3400	-	-	2000-2900	2000-2900
3500	-	-	-	2000-2900
3600	-	-	-	2000-2900
3700	-	-	-	2000-2900
3800	-	-	-	2000-2900
3900	-	-	-	2000-2900
4000	-	-	-	2000-2900
4100	-	-	-	2000-2900
4200	-	-	-	2000-2900
4300	-	-	-	2000-2900
4400	-	-	-	2000-2900
4500	-	-	-	2000-2900

FRAMED GLASS CONSTRUCTION

S3 L-R

CONSTRUCTION WITH FRAMED GLASS PANELS FOR SIDE OPENING DOORS

OPTION



- IN CASE OF WINDOW SMALLER THAT THE STANDARD ONE, PLEASE INDICATE DIMENSIONS X AND Y TOGETHER WITH THE POSITION.
- FÜR DEN FALL, DASS DAS FENSTER KLEINER ALS STANDARD IST, DIE MAßE X UND Y UND DESSEN POSITIONIERUNG ANGEBEN.
- IN CASO DI FINESTRATURA PIÙ PICCOLA DELLO STANDARD, INDICARE LE MISURE X E Y ED IL POSIZIONAMENTO

X = _____ (inserire formula)

Y = _____ (inserire formula)

Abstract from...

SEMAC DECLARATION OF CONFORMITY FOR GLASS PANELLED LIFT DOORS (Lift Directive 2014/33/EU)

The glass panelled lift doors supplied conform To Standard EN81-1/2:1998 or EN81-20:2014

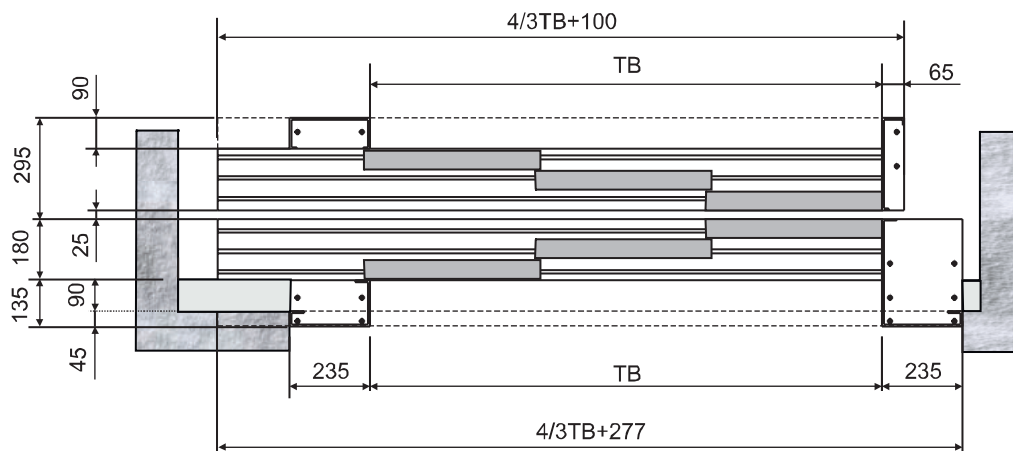
1 - panel clad only by Sematic

2 - for the car door: by customer

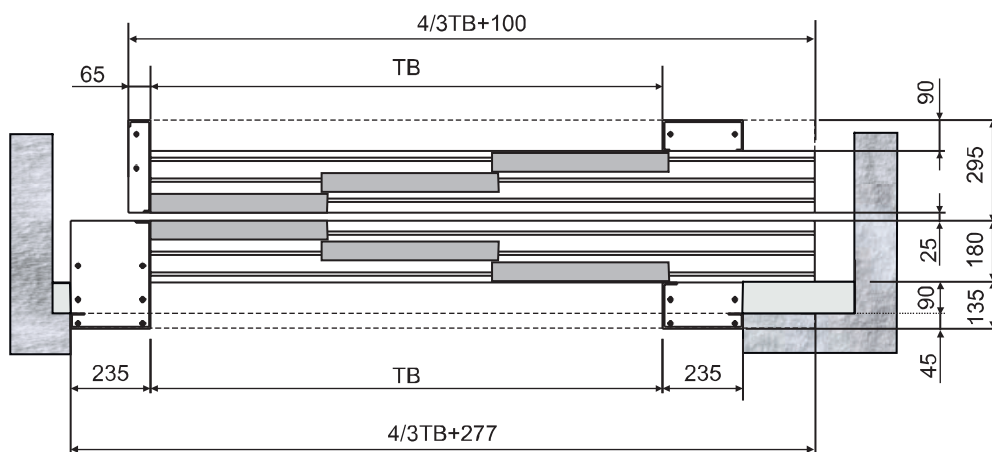
OVERALL DIMENSIONS

3L-R

OVERALL DIMENSIONS FOR DOORS



K3L - S3L



K3R - S3R

EN 81-20/50**3R-L****DOOR CONFORMITY RULES IN RESPECT OF EN 81-20/50**

The door which is compliant to EN 81-20/50 must be equipped with the features mentioned below:

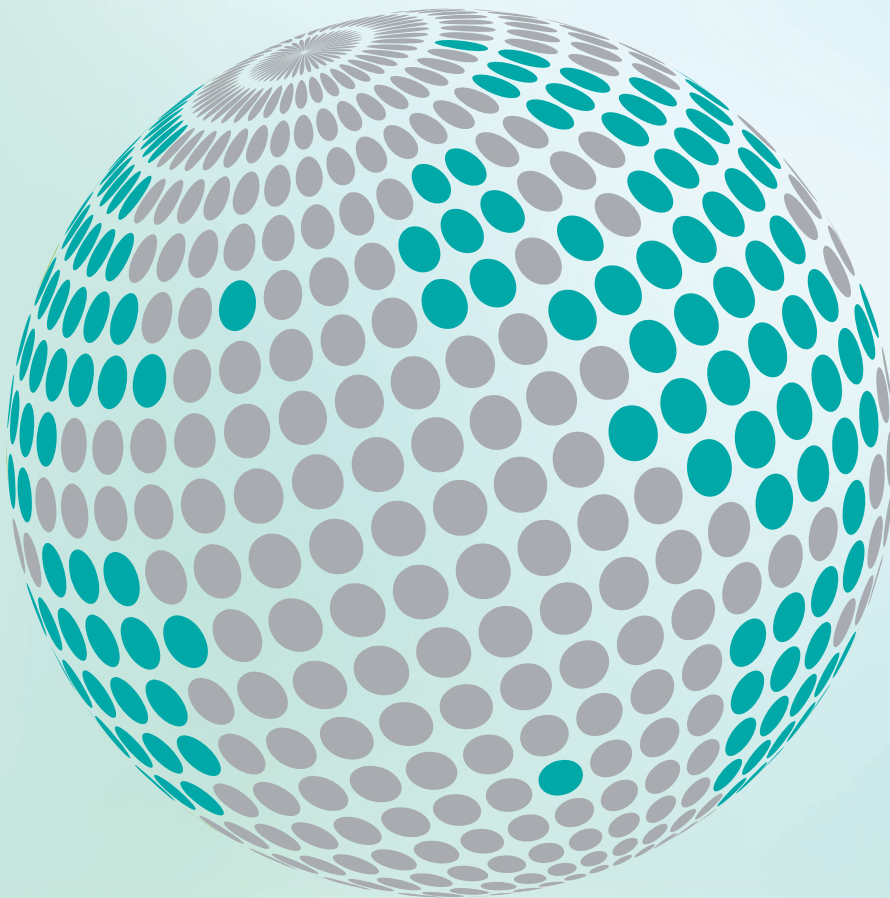
Item	STD	Option	Notes
Detector provision	X		The detector has to be compliant to EN 81-20/50
Detector		X	The detector has to be compliant to EN 81-20/50
Vision panel		X	The position of the car door vision panel must be the same as the landing door. No vision panel required on car side if the car remains open in stationary position
Man in the pit - S	X		
Car door lock	X		
Egress device - K	X		



*Other requirements related to EN81-20/50 are already part of the door's specification.
For any further information please contact your sales reference*



**YOUR GLOBAL PARTNER FOR COMPONENTS,
MODULES AND SYSTEMS IN THE ELEVATOR INDUSTRY**



www.wittur.com

More information
about Wittur Group
available on-line.



SELCOM®
a WITTUR brand

Liftmaterial
a WITTUR brand

sematic®
a WITTUR brand