

# 2000 B-G

Code	TC.2.004480.EN
Version	C 21 April 2021
Edition	8 May 2007
SEM ID	921-410-000

mod: K-S 2Z



No part of this publication may be reproduced or translated, even in part, without prior written permission from WITTUR.

Subject to change without notice!

info@wittur.com  
www.wittur.com

© Copyright WITTUR 2021



## INDEX

COMPLETE RANGE OF SEMATIC 2000 B-G DOORS .....	5
COMPLETE RANGE OF SEMATIC 2000 B-G SHIELD PRO OPTION DOORS.....	6
FRONT, PLAN AND SIDE VIEW OF CAR DOOR.....	7
CAR DOOR OPERATOR DETAIL.....	8
OPERATOR FIXING SCHEME (standard motor).....	9
OPERATOR FIXING SCHEME (B105AASX motor).....	10
INSTALLATION RANGE OF OPERATOR FIXING BRACKETS .....	11
CAR DOOR APRON FOR TB=1000 .....	12
CAR DOOR APRON FOR 1000<TB≤1450 .....	13
CAR DOOR APRON FOR 1450<TB≤2000.....	14
"K" LIGHT CURTAIN ALUMINIUM SILL APPLICATION SCHEME.....	15
"K" LIGHT CURTAIN IRON SILL APPLICATION SCHEME.....	16
DETECTOR 3D (cod. 674/774) .....	17
FRONT AND SIDE VIEW OF STANDARD LANDING DOOR TB=1000 .....	18
FRONT AND SIDE VIEW OF STANDARD LANDING DOOR 1000<TB≤1450 .....	19
FRONT AND SIDE VIEW OF STANDARD LANDING DOOR 1450<TB≤1600.....	20
FRONT AND SIDE VIEW OF STANDARD LANDING DOOR 1600<TB≤2000.....	21
COUPLING AND INSTALLATION CAR AND LANDING DOOR .....	22
LANDING DOOR FIXING BRACKETS - STANDARD .....	23
OPTIONAL FIXING BRACKETS AVAILABLE ON REQUEST .....	24
ALUMINIUM BOTTOM TRACK SUPPORT FIXING SCHEME.....	25
CLOSE ADDITIONAL PROFILE FOR ALUMINIUM TRACK.....	26
STEEL BOTTOM TRACK SUPPORT FIXING SCHEME .....	27
CLOSE ADDITIONAL PROFILE STEEL/INOX BOTTOM TRACK .....	28
BOTTOM TRACK SUPPORT TB=1000 - LOAD CAPACITY < 4000 Kg.....	29
FULL WITH ANGLE SUPPORT 1000<TB≤1450 - LOAD CAPACITY < 4000 Kg.....	30
FULL WITH ANGLE SUPPORT 1000<TB≤1450 - LOAD CAPACITY ≥ 4000 Kg.....	31
FULL WITH ANGLE SUPPORT 1450<TB≤1600 - LOAD CAPACITY < 4000 Kg.....	32
FULL WITH ANGLE SUPPORT 1450<TB≤1600 - LOAD CAPACITY ≥ 4000 Kg.....	33
FULL WITH ANGLE SUPPORT 1600<TB≤2000 - LOAD CAPACITY < 4000 Kg.....	34
FULL WITH ANGLE SUPPORT 1600<TB≤2000 - LOAD CAPACITY ≥ 4000 Kg.....	35
FIXING POINTS SCHEME FOR FULL WIDTH ANGLE SUPPORT FOR LIFTS WITH LOAD CAPACITY ≥ 4000 Kg - 1000<TB≤1450.....	36
FIXING POINTS SCHEME FOR FULL WIDTH ANGLE SUPPORT FOR LIFTS WITH LOAD CAPACITY ≥ 4000 Kg - 1450<TB≤1600.....	37
FIXING POINTS SCHEME FOR FULL WIDTH ANGLE SUPPORT FOR LIFTS WITH LOAD CAPACITY ≥ 4000 Kg - 1600<TB≤2000.....	38
COMPLETE ALUMINIUM BOTTOM TRACK .....	39

**INDEX**

SELFSTANDING STEEL/STAINLESS STEEL BOTTOM TRACK.....	40
FRAMED GLASS .....	41
FRAMED GLASS PANELS SHIELD PRO OPTION .....	42
FULL GLASS.....	43
CONSTRUCTION WITH FRAMED GLASS PANELS.....	44
CONSTRUCTION WITH FULL GLASS PANELS.....	45
LANDING DOOR AND PORTAL CONSTRUCTION CODIFIED CLADDINGS .....	46
Landing door closing device application range .....	47
COUNTERWEIGHT INSTALLATION .....	49
MINIMUM DISTANCE INTERFLOOR SCHEME.....	50
BEATING PROFILES SCHEME.....	51
DOOR CONFORMITY RULES IN RESPECT OF EN 81-20/50 .....	52

## COMPLETE RANGE OF SEMATIC 2000 B-G DOORS

Type	2L-R	3L-R	2Z	4Z	6Z
TB	TH				
1000	2000-3000	2000-2500	2000-3000	2000-2300	-
1100	2000-3000	2000-2500	2000-3000	2000-2300	-
1200	2000-3000	2000-3000	2000-3000	2000-2300	-
1300	2000-3000	2000-3000	2000-3000	2000-3000	-
1400	2000-3500	2000-3500	2000-3500	2000-3000	2000-2300
1500	2000-3500	2000-3500	2000-3500	2000-3000	2000-2300
1600	2000-3500	2000-3500	2000-3500	2000-3000	2000-2300
1700	2000-3500	2000-3500	2000-3500	2000-3000	2000-2500
1800	2000-3500	2000-3500	2000-3500	2000-3000	2000-2500
1900	2000-3500	2000-3500	2000-3500	2000-3500	2000-2500
2000	2000-3500	2000-3500	2000-3500	2000-3500	2000-3000
2100	-	-	-	2000-3500	2000-3000
2200	-	-	-	2000-3500	2000-3000
2300	-	-	-	2000-3500	2000-3000
2400	-	-	-	2000-3500	2000-3000
2500	-	-	-	2000-3500	2000-3500
2600	-	-	-	2000-3500	2000-3500
2700	-	-	-	2000-3500	2000-3500
2800	-	-	-	2000-3500	2000-3500
2900	-	-	-	2000-3500	2000-3500
3000	-	-	-	2000-3500	2000-3500
3100	-	-	-	2000-3500	2000-3500
3200	-	-	-	2000-3500	2000-3500
3300	-	-	-	2000-3500	2000-3500
3400	-	-	-	2000-3500	2000-3500
3500	-	-	-	2000-3500	2000-3500

**COMPLETE RANGE OF SEMATIC 2000 B-G SHIELD PRO OPTION DOORS**

Type	2L-R	2Z	4Z
TB	TH		
800*	2000-2300	2000-2300	2000-2300
900*	2000-2300	2000-2300	2000-2300
1000	2000-2300	2000-2300	2000-2300
1100	2000-2300	2000-2300	2000-2300
1200	2000-2300	2000-2300	2000-2300
1300	2000-2300	2000-2300	2000-2300
1400	2000-2300	2000-2300	2000-2300
1500	-	-	2000-2300
1600	-	-	2000-2300
1700	-	-	2000-2300
1800	-	-	2000-2300
1900	-	-	2000-2300
2000	-	-	2000-2300
2100	-	-	2000-2300
2200	-	-	2000-2300
2300	-	-	2000-2300
2400	-	-	2000-2300
2500	-	-	2000-2300
2600	-	-	2000-2300
2700	-	-	2000-2300
2800	-	-	2000-2300



\* Custom based

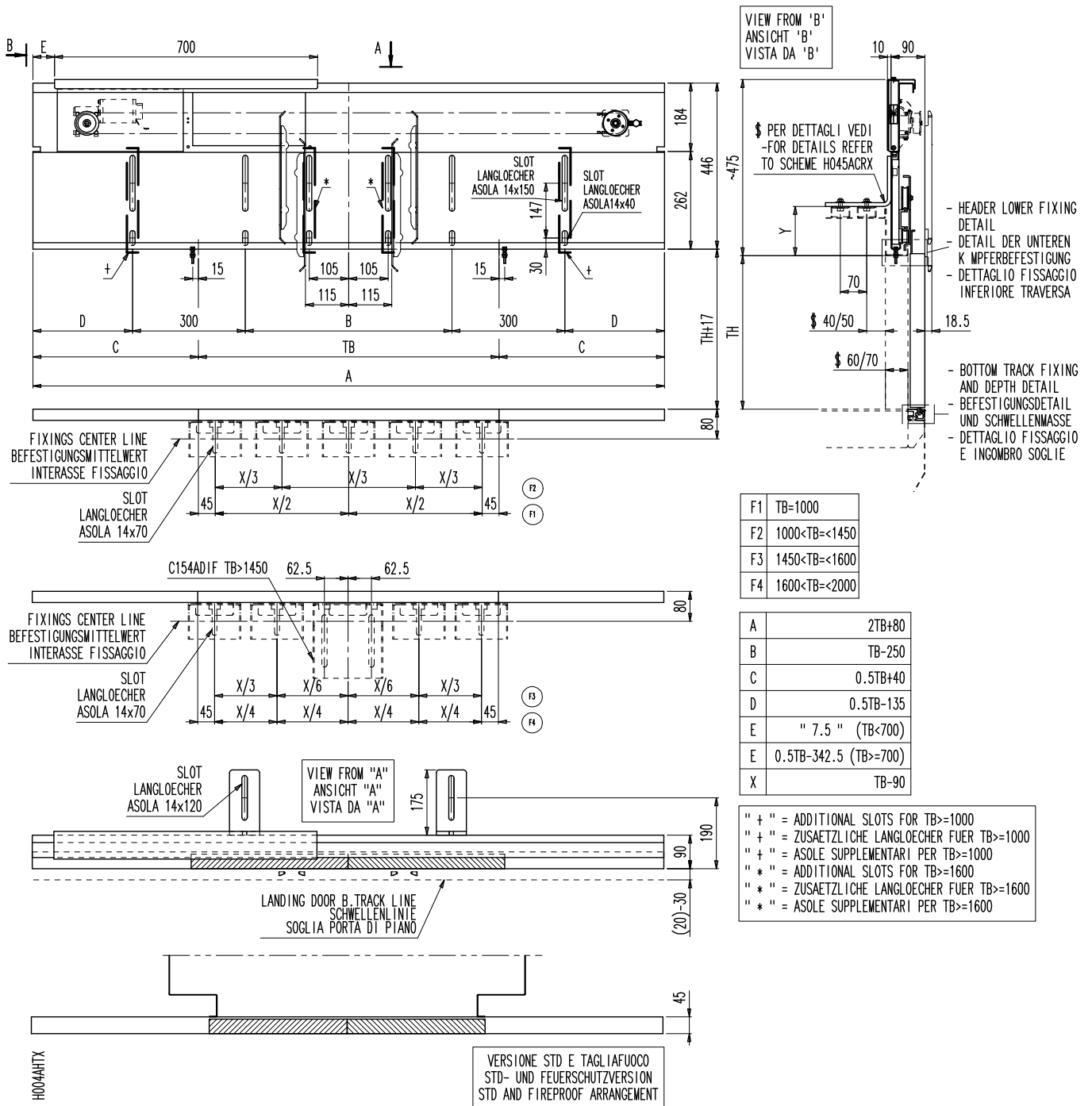


Landing door only

## CAR DOOR

K 22

## FRONT, PLAN AND SIDE VIEW OF CAR DOOR

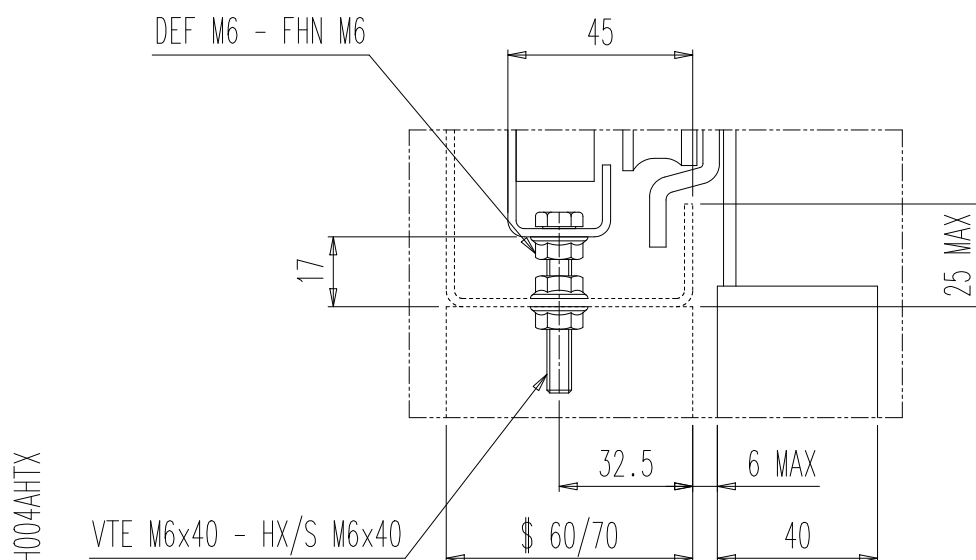


## CAR DOOR

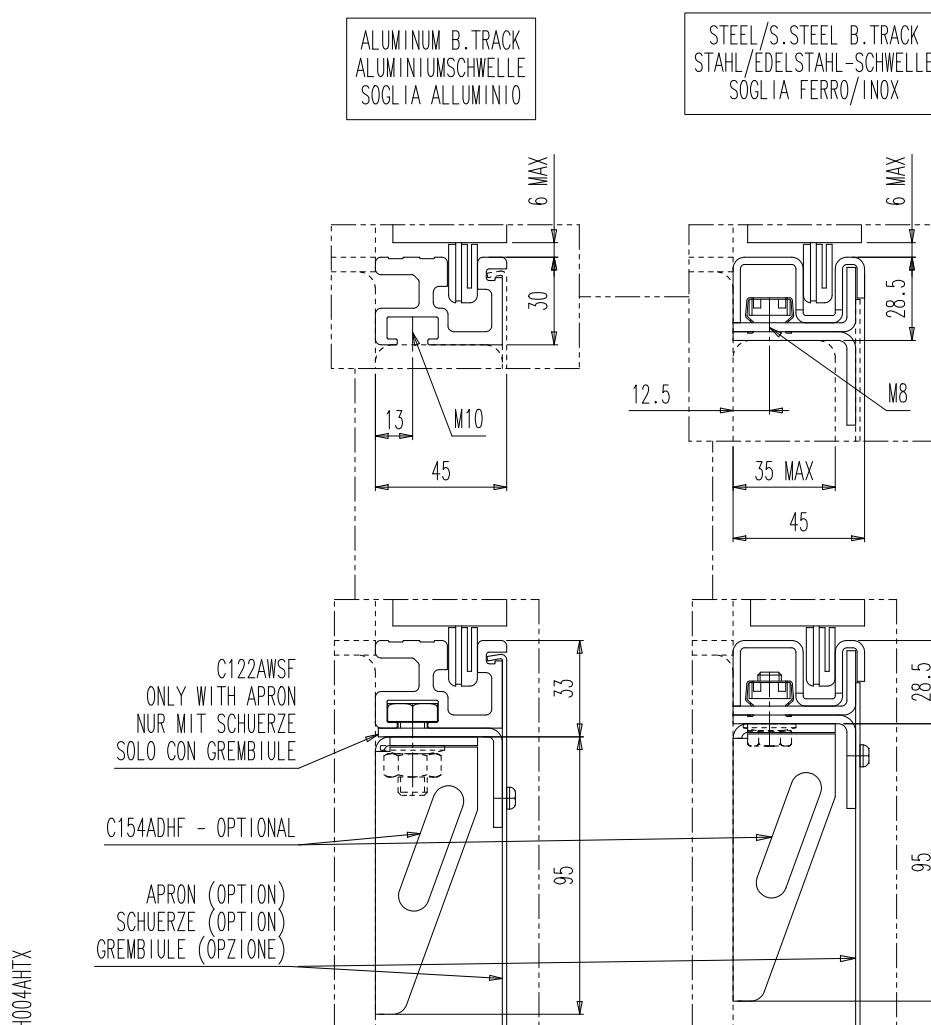
K 22

## CAR DOOR OPERATOR DETAIL

## HEADER LOWER FIXING DETAIL



## BOTTOM TRACK FIXING AND DEPTH DETAIL

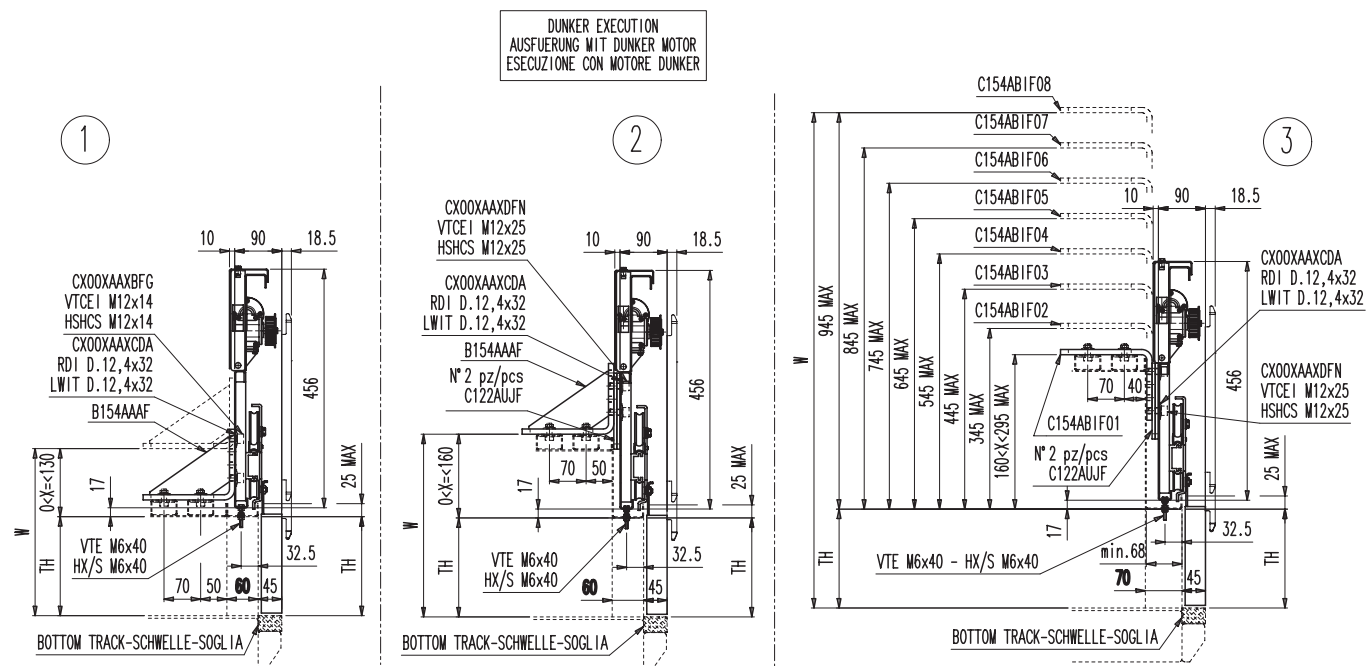




## FIXING SCHEME

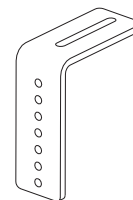
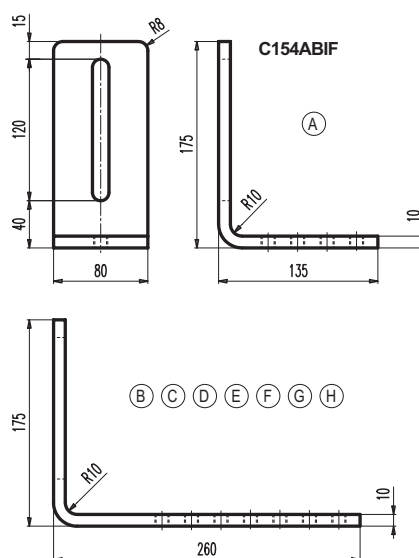
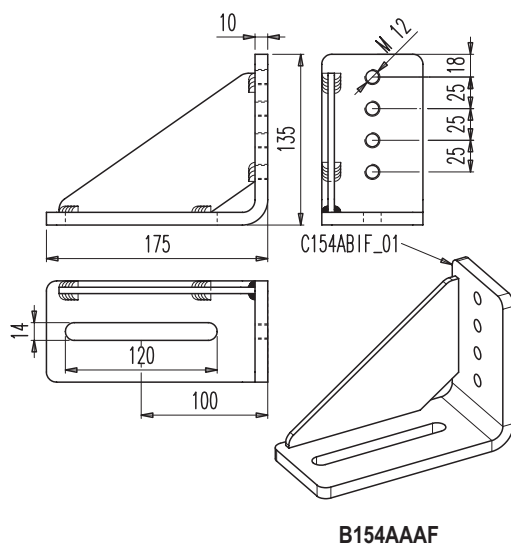
K 22

## OPERATOR FIXING SCHEME (STANDARD MOTOR)



H045ACRX

- \* W \* Maximum external cabin roof height with car fixings
- \* W \* Maximale aussere Kabinenhöhe einschliesslich der Kabinenkampferbefestigungen
- \* W \* Altezza massima esterna di cabina incluse le canaline di fissaggio operatore



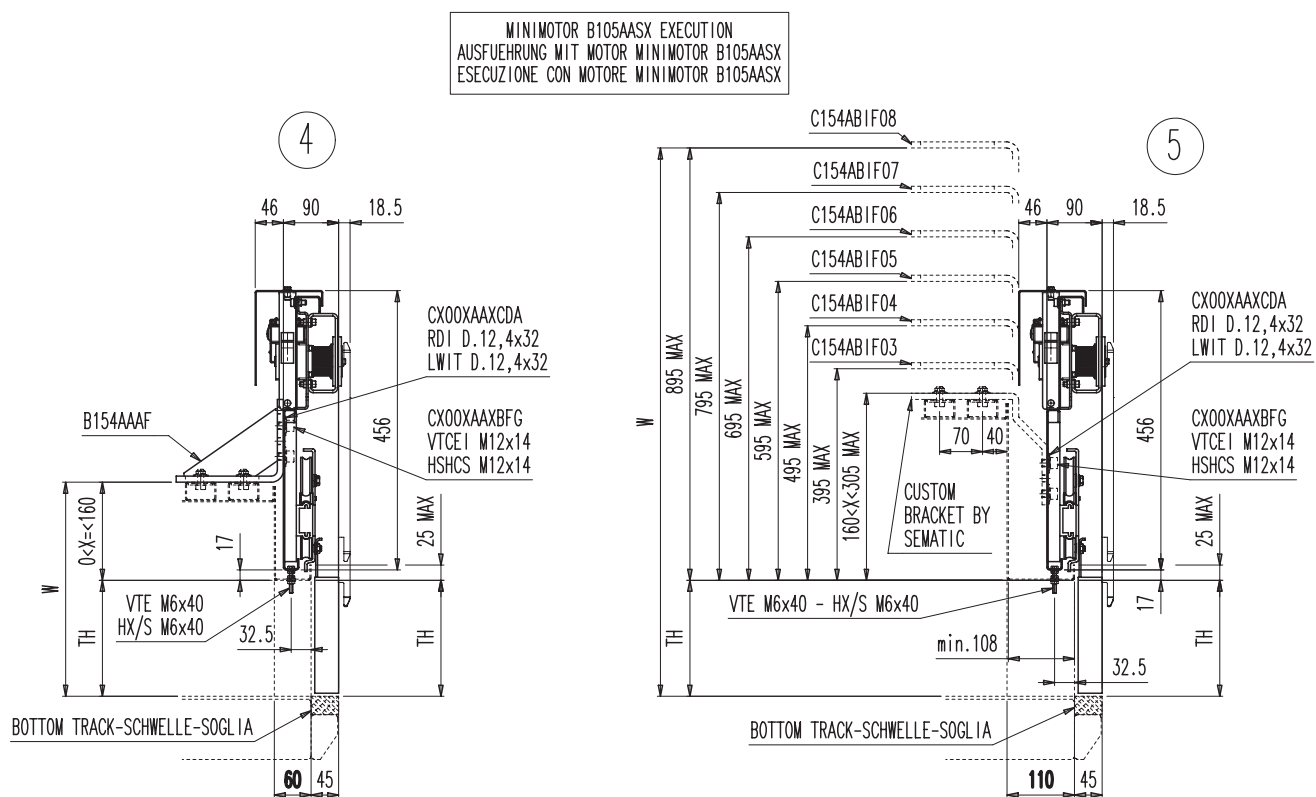
COD.	POS.	EXT. CABIN HEIGHT EXT. KABINENHOEHE H. ESTERNA CABINA		L
		MIN.	MAX.	
C154ABIF01	A	TH+157	TH+295	135
C154ABIF02	B	TH	TH+345	210
C154ABIF03	C	TH+302	TH+445	310
C154ABIF04	D	TH+402	TH+545	410
C154ABIF05	E	TH+502	TH+645	510
C154ABIF06	F	TH+602	TH+745	610
C154ABIF07	G	TH+702	TH+845	710
C154ABIF08	H	TH+802	TH+945	810

## FIXING SCHEME

K 22

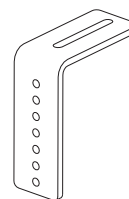
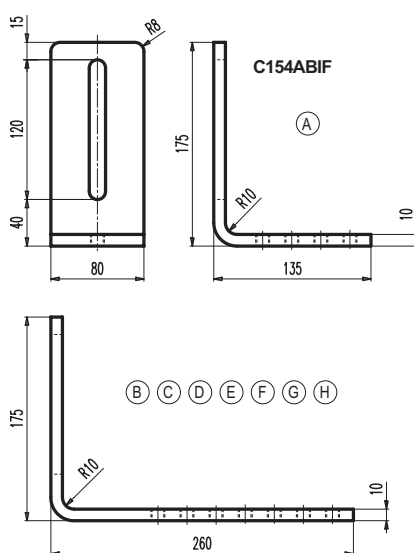
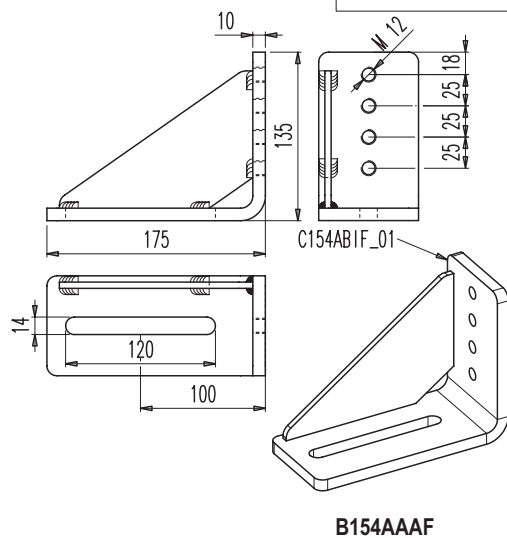
## OPERATOR FIXING SCHEME (B105AASX MOTOR)

OPTION



H045ACRX

- \* W \* Maximum external cabin roof height with car fixings
- \* W \* Maximale aussere Kabinenhoehe einschliesslich der Kabinenkaempferbefestigungen
- \* W \* Altezza massima esterna di cabina incluse le canaline di fissaggio operatore



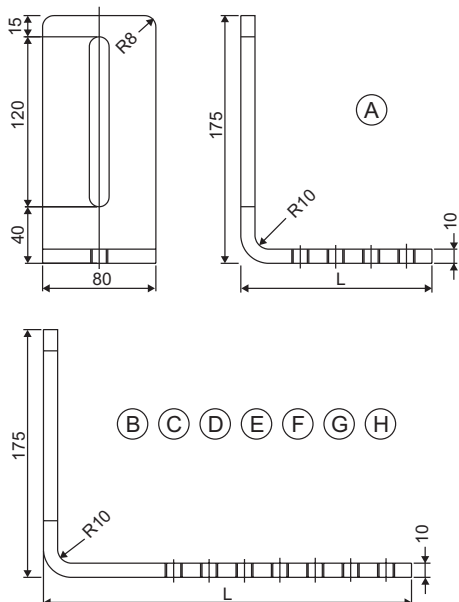
COD.	POS.	EXT. CABIN HEIGHT EXT. KABINENHOEHE H. ESTERNA CABINA		L
		MIN.	MAX.	
C154ABIF01	A	TH+157	TH+295	135
C154ABIF02	B	TH	TH+345	210
C154ABIF03	C	TH+302	TH+445	310
C154ABIF04	D	TH+402	TH+545	410
C154ABIF05	E	TH+502	TH+645	510
C154ABIF06	F	TH+602	TH+745	610
C154ABIF07	G	TH+702	TH+845	710
C154ABIF08	H	TH+802	TH+945	810

## FIXINGS K

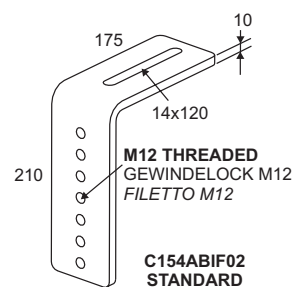
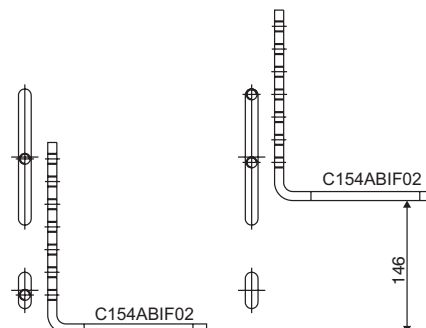
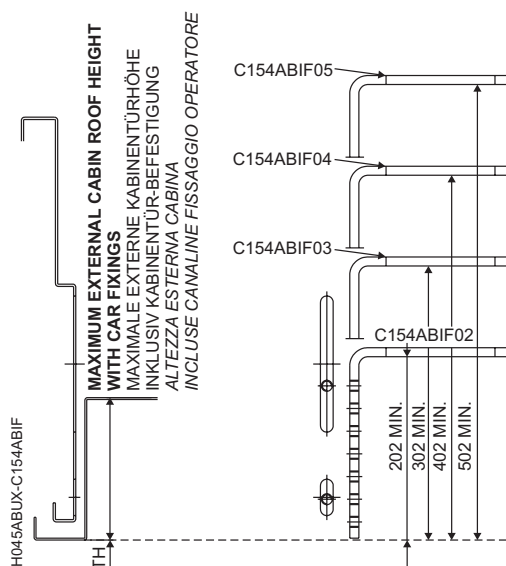
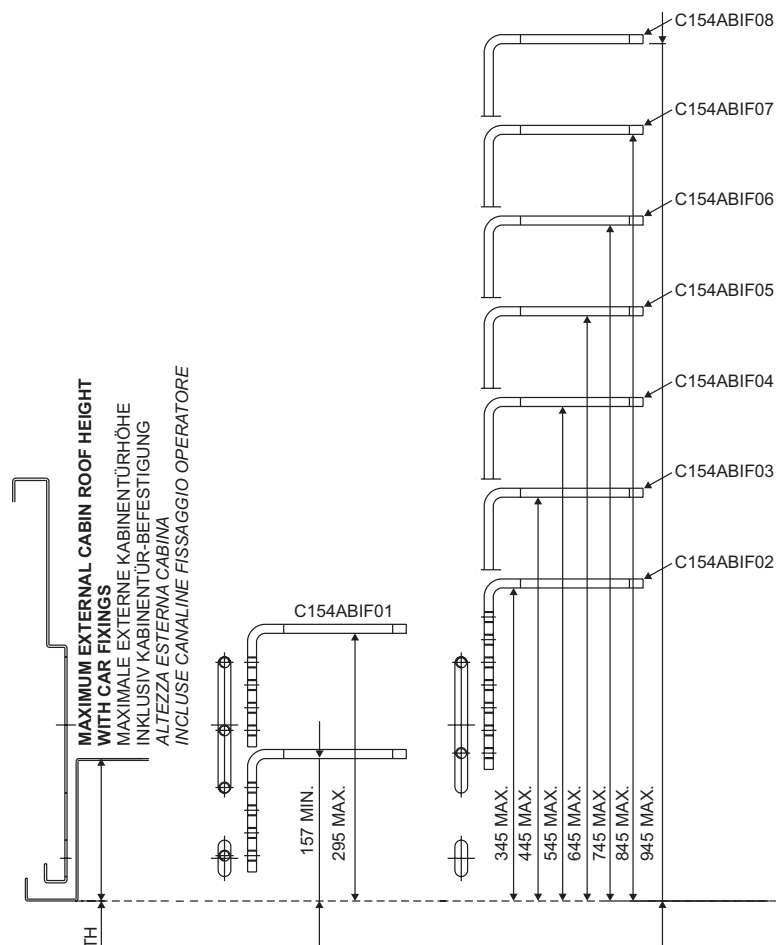
K 27

## INSTALLATION RANGE OF OPERATOR FIXING BRACKETS

**FIXING BRACKET FOR CAR DOOR OPERATOR**  
 KABINENTÜRANTRIEBSWINKEL  
 STAFFA FISSAGGIO OPERATORE PORTA DI CABINA



COD.	POS.	EXT. CABIN HEIGHT EXT. KABINENHÖHE H. ESTERNA CABINA		L
		MIN.	MAX.	
C154ABIF01	A	TH+157	TH+295	135
C154ABIF02	B	TH	TH+345	210
C154ABIF03	C	TH+302	TH+445	310
C154ABIF04	D	TH+402	TH+545	410
C154ABIF05	E	TH+502	TH+645	510
C154ABIF06	F	TH+602	TH+745	610
C154ABIF07	G	TH+702	TH+845	710
C154ABIF08	H	TH+802	TH+945	810

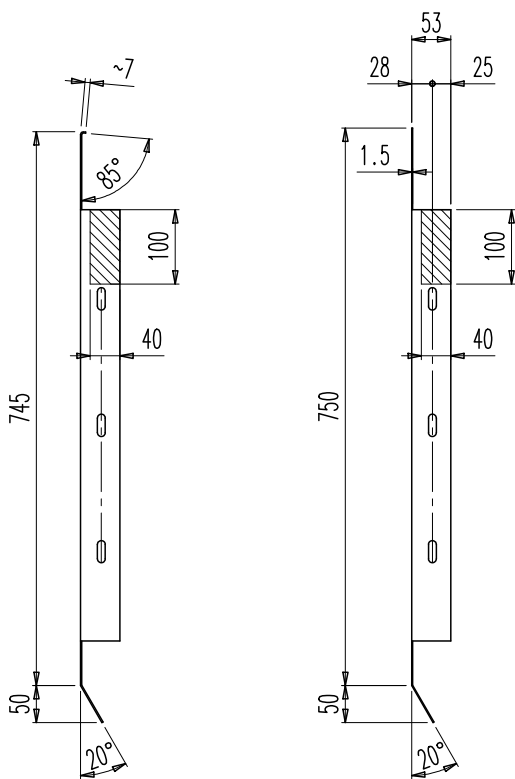


## APRON K

K 22

## CAR DOOR APRON FOR TB=1000

OPTION



C094AADF 02

C094AADF 01

- C094AADF 01  
FOR ALUMINIUM BOTTOM TRACK  
FÜR ALUMINIUM SCHWELLE  
PER SOGLIA ALLUMINIO
- FOR STEEL, STAINLESS-STEEL BOTTOM TRACK  
FÜR STAHL/EDELSTAHL SCHWELLE  
PER SOGLIA FE/INOX
- FOR EXTRUDED MANGANESE-BRONZE BOTTOM TRACK  
FÜR SCHWELLE AUS GEZOGENEM MESSING  
PER SOGLIA IN OTTONE ESTRUSO

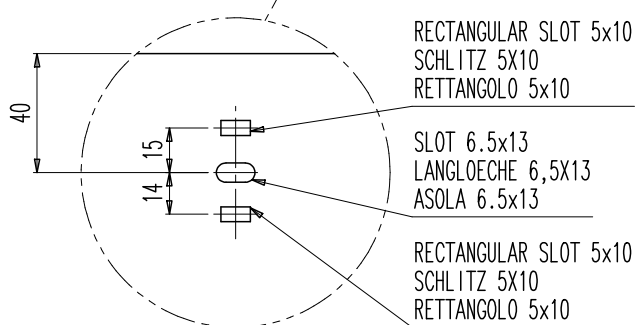
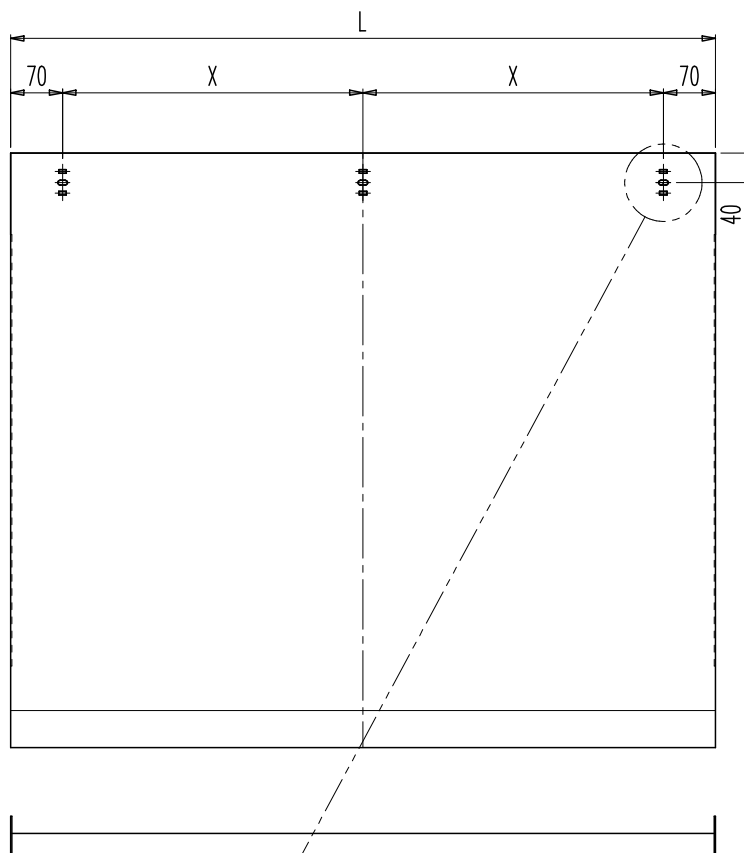
C094AADF 02

- FOR FULL ALUMINIUM BOTTOM TRACK  
FÜR SCHWELLE ALUMINIUM INTEGRAL  
PER SOGLIA ALLUMINIO INTEGRALE

C094AADF



REMOVABLE PART  
ENTFERNBARER TEIL  
PARTE DA RIMUOVERE



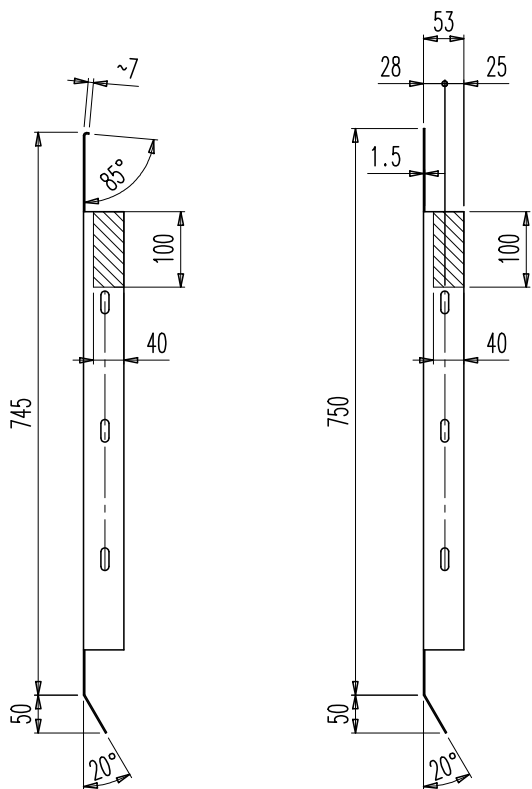
QUANTITY STUECKZAHL QUANTITA'	TB	X	L
1 PIECE 1 STUECK 1 PEZZO	TB=1000	(TB-90)/2	TB+50

## APRON K

K 22

CAR DOOR APRON FOR  $1000 < TB \leq 1450$ 

OPTION



C094AADF 02

C094AADF 01

- C094AADF 01
- FOR ALUMINIUM BOTTOM TRACK  
FÜR ALUMINIUM SCHWELLE  
PER SOGLIA ALLUMINIO
  - FOR STEEL, STAINLESS-STEEL BOTTOM TRACK  
FÜR STAHL/EDELSTAHL SCHWELLE  
PER SOGLIA FE/INOX
  - FOR EXTRUDED MANGANESE-BRONZE BOTTOM TRACK  
FÜR SCHWELLE AUS GEZOGENEM MESSING  
PER SOGLIA IN OTTONE ESTRUSO

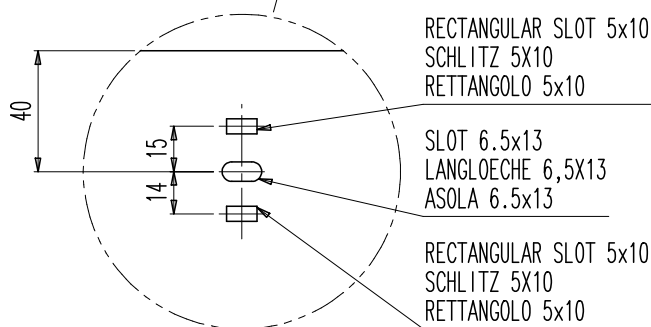
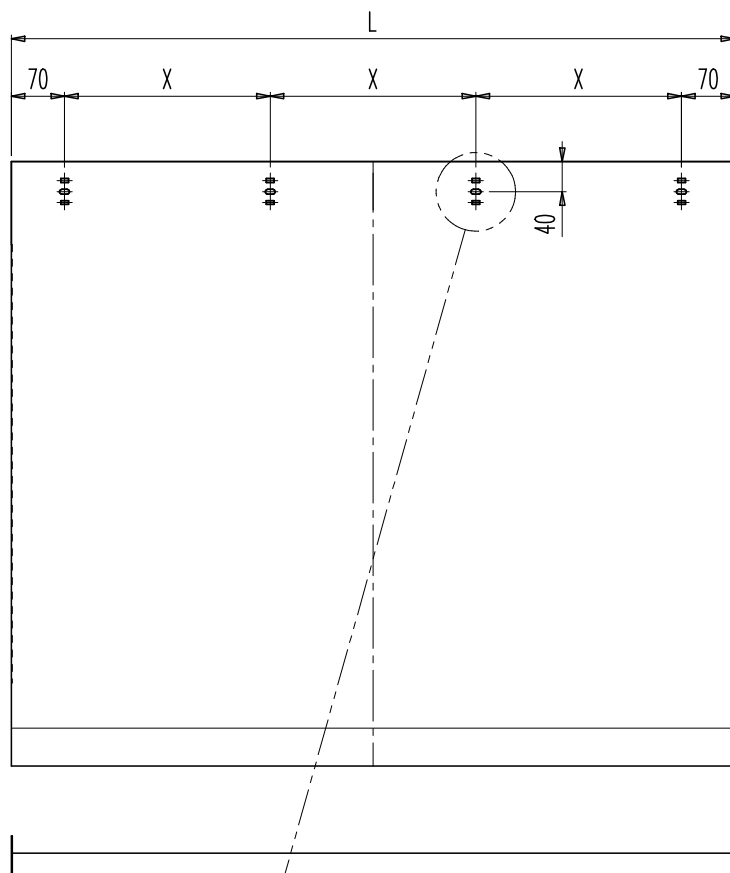
C094AADF 02

- FOR FULL ALUMINIUM BOTTOM TRACK  
FÜR SCHWELLE ALUMINIUM INTEGRAL
- PER SOGLIA ALLUMINIO INTEGRALE

C094AADF



REMOVABLE PART  
ENTFERNZBARER TEIL  
PARTE DA RIMUOVERE



RECTANGULAR SLOT 5x10  
SCHLITZ 5x10  
RETTANGOLO 5x10

SLOT 6.5x13  
LANGLOECHE 6,5x13  
ASOLA 6.5x13

RECTANGULAR SLOT 5x10  
SCHLITZ 5x10  
RETTANGOLO 5x10

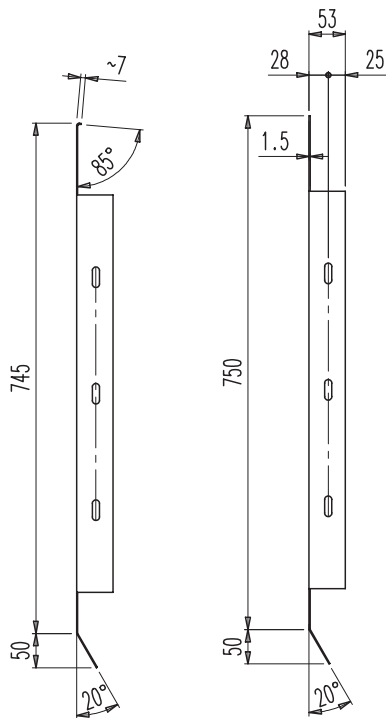
QUANTITY STUECKZAHL QUANTITÀ	TB	X	L
1 PIECE 1 STUECK 1 PEZZO	$1000 < TB \leq 1450$	$(TB-90)/3$	TB+50

## APRON K

K 2Z

CAR DOOR APRON FOR  $1450 < TB \leq 2000$ 

OPTION



C094AADF 02

C094AADF 01

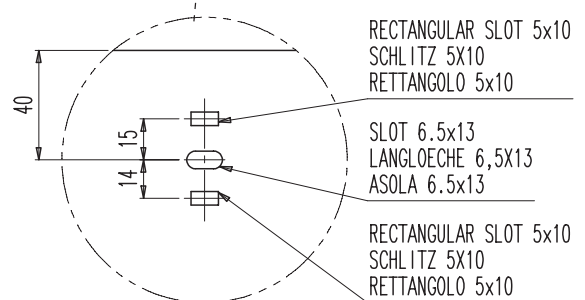
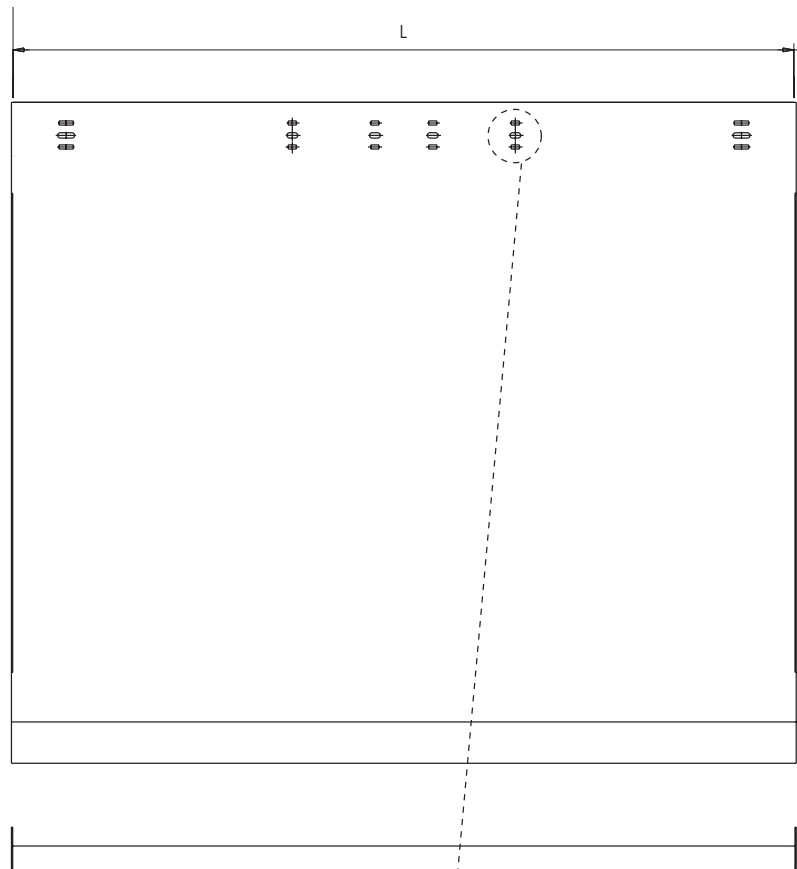
## C094AADF 01

- FOR ALUMINIUM BOTTOM TRACK  
FÜR ALUMINIUM SCHWELLE  
PER SOGLIA ALLUMINIO
- FOR STEEL, STAINLESS-STEEL BOTTOM TRACK  
FÜR STAHL/EDELSTAHL SCHWELLE  
PER SOGLIA FE/INOX
- FOR EXTRUDED MANGANESE-BRONZE BOTTOM TRACK  
FÜR SCHWELLE AUS GEZOGENEM MESSING  
PER SOGLIA IN OTTONE ESTRUSO

## C094AADF 02

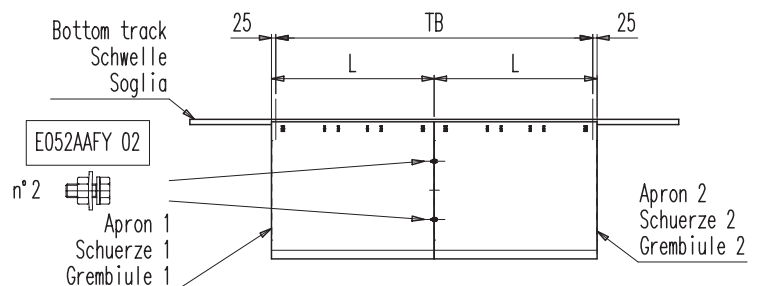
- FOR FULL ALUMINIUM BOTTOM TRACK  
FÜR SCHWELLE ALUMINIUM INTEGRALE  
PER SOGLIA ALLUMINIO INTEGRALE

QUANTITY STÜCKZAHL QUANTITÀ	TB	L
2 PIECE 2 STÜCK 2 PEZZO	$1450 < TB \leq 1600$	$TB/2 + 25$
	$1600 < TB \leq 2000$	$TB/2 + 25$



- WARNING: WITH  $TB > 1450$  THE APRON WILL BE SUPPLIED IN TWO EQUAL PARTS TO BE JOINED BY TWO E052AAFY02 BOLTS.
- ACHTUNG: FÜR  $TB > 1450$  WIRD DIE SCHUERZE IN ZWEI GLEICHEN TEILEN UND MIT ZWEI SCHRAUBEN (E052AAFY02) GELIEFERT
- ATTENZIONE: PER  $TB > 1450$  PREVEDERE LA FORNITURA DEL GREMBIULE IN DUE PEZZI UGUALI E FORNIRE NR.2 BULLONI E052AAFY02

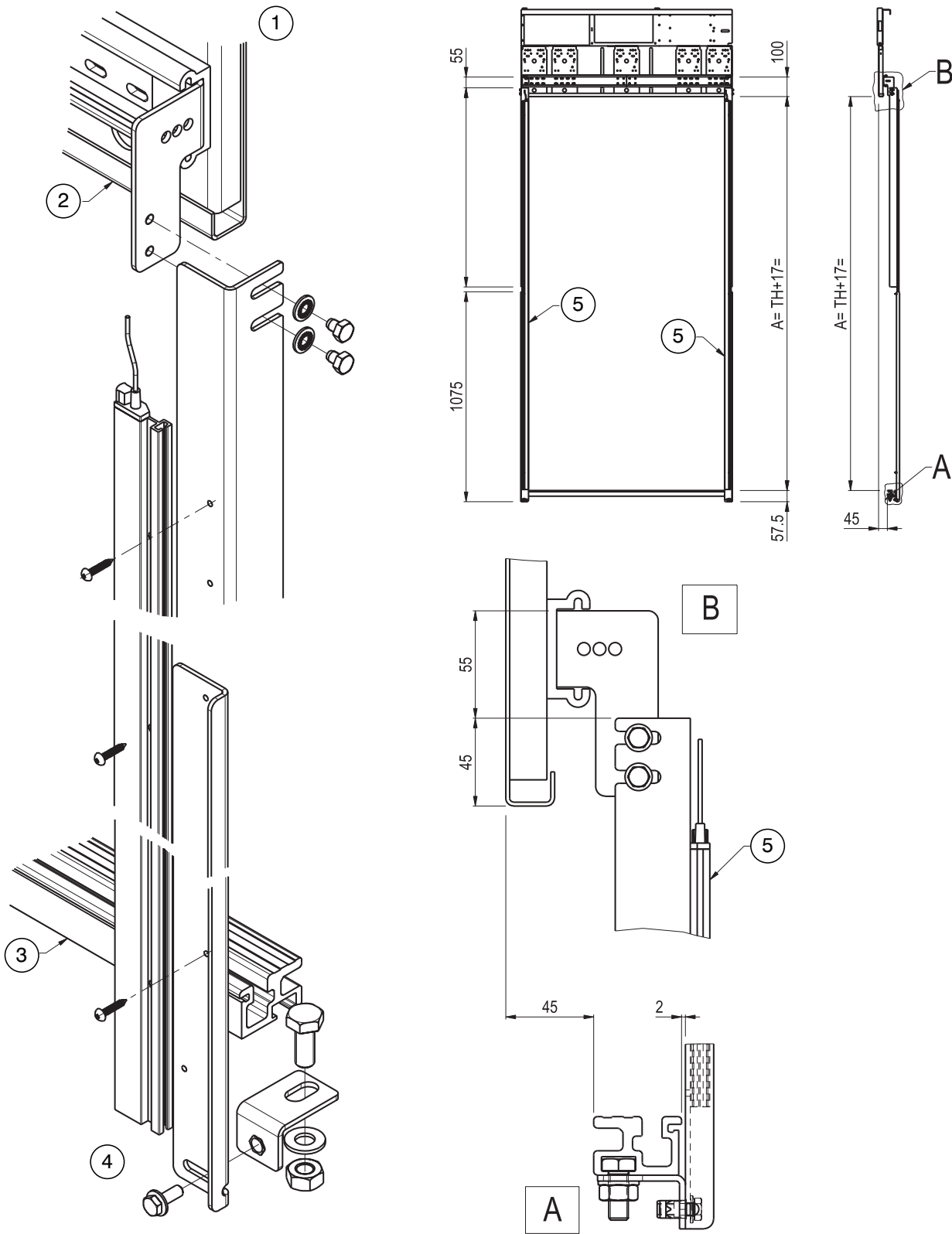
C049AAGF



DETECTOR

K 2Z

"K" LIGHT CURTAIN ALUMINIUM SILL APPLICATION SCHEME

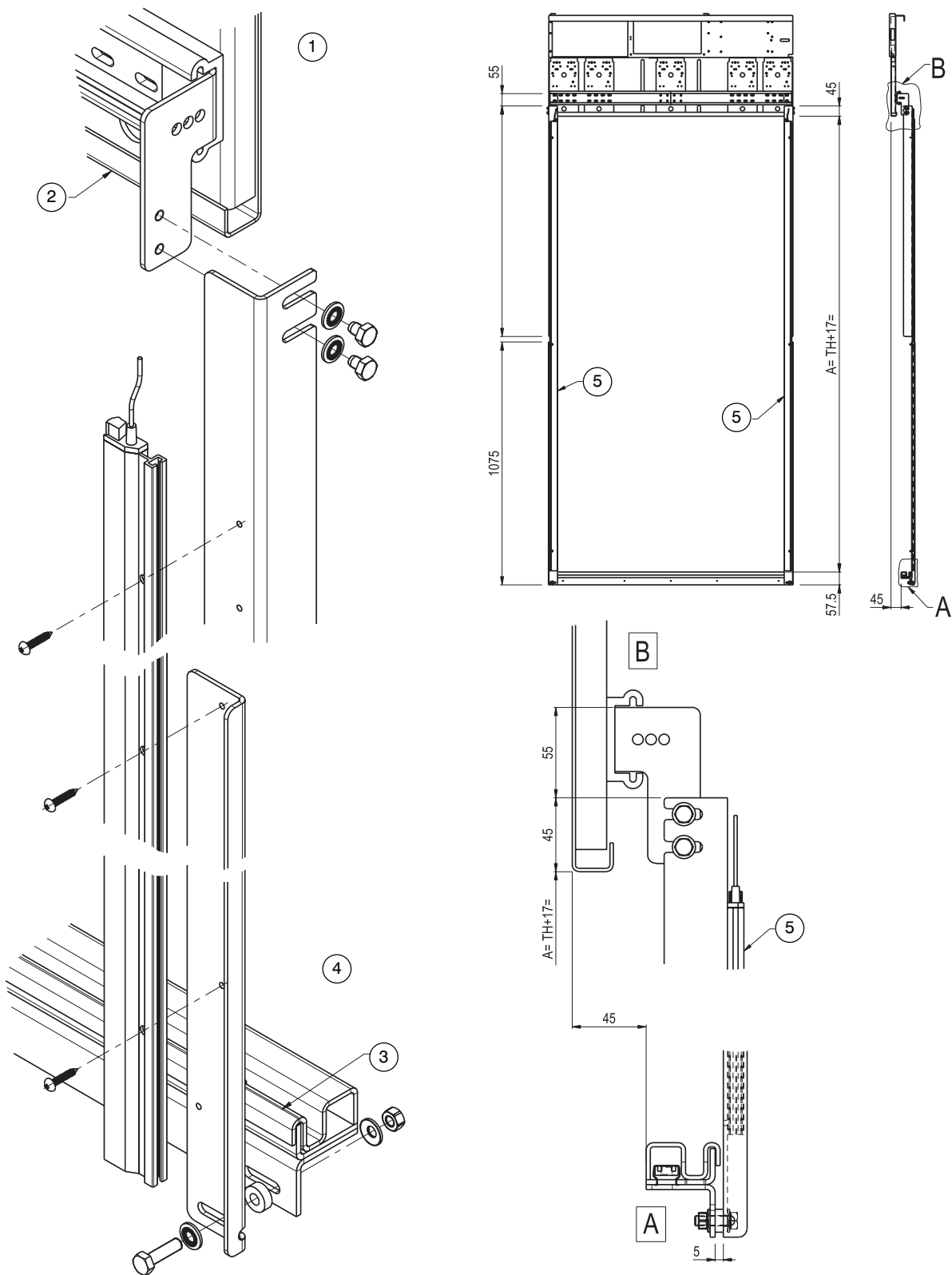


1	Upper application	2	Header	3	Aluminium sill
4	Lower application	5	Detector light curtain		

DETECTOR

K 2Z

"K" LIGHT CURTAIN IRON SILL APPLICATION SCHEME



1	Upper application	2	Header	3	Iron sill
4	Lower application	5	Detector light curtain		



## DETECTOR 3D

2Z

## DETECTOR 3D (COD. 674/774)

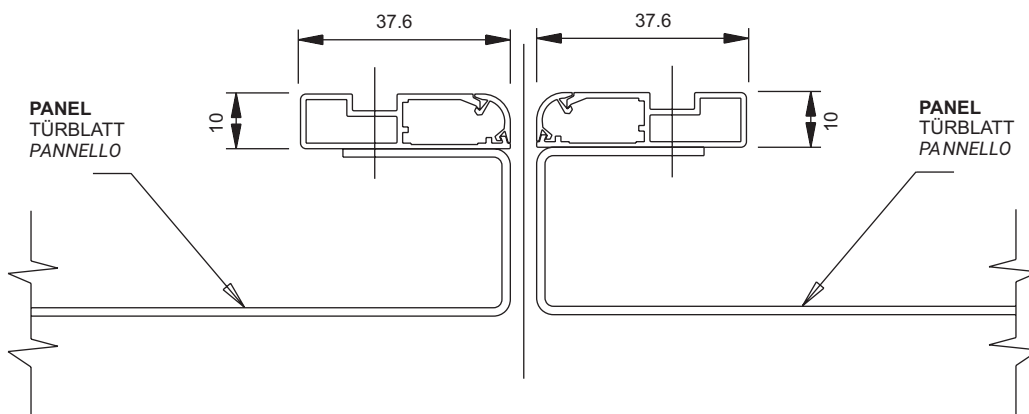
OPTION

☐ **PROVISION**  
VORBEREITUNG  
PREDISPOSIZIONE

☐ **PROVISION AND SUPPLY**  
VORBEREITUNG UND LIEFERUNG  
PREDISPOSIZIONE E FORNITURA

☐ PANA 40 3D 774.000

☐ ELITE 3D 674.190



IN THE PNP N/O VERSION, (IF IT IS ORDERED TOGETHER WITH THE SEMATIC ENCODER SYSTEM® OR SEMATIC DRIVE SYSTEM®) THIS DEVICE IS CONNECTED DIRECTLY TO THE ENCODER CONTROLLER THEREBY ELIMINATING ANY SUPPLY CABLES OR INTERFACE PROBLEMS WITH THE MAIN LIFT CONTROLLER

BEI DER VERSION PNP N/O UND FALLS BESTELLT MIT SEMATIC ENCODER SYSTEM® ODER SEMATIC DRIVE SYSTEM® IST DIESE VORRICHTUNG DIREKT MIT DEM ENCODER TÜRSTEUERGERÄT VERBUNDEN, ZUSÄTZLICHE SPEISUNG ODER INTERFACE MIT AUFZUGS STEUERUNG IST NICHT ERFORDERLICH

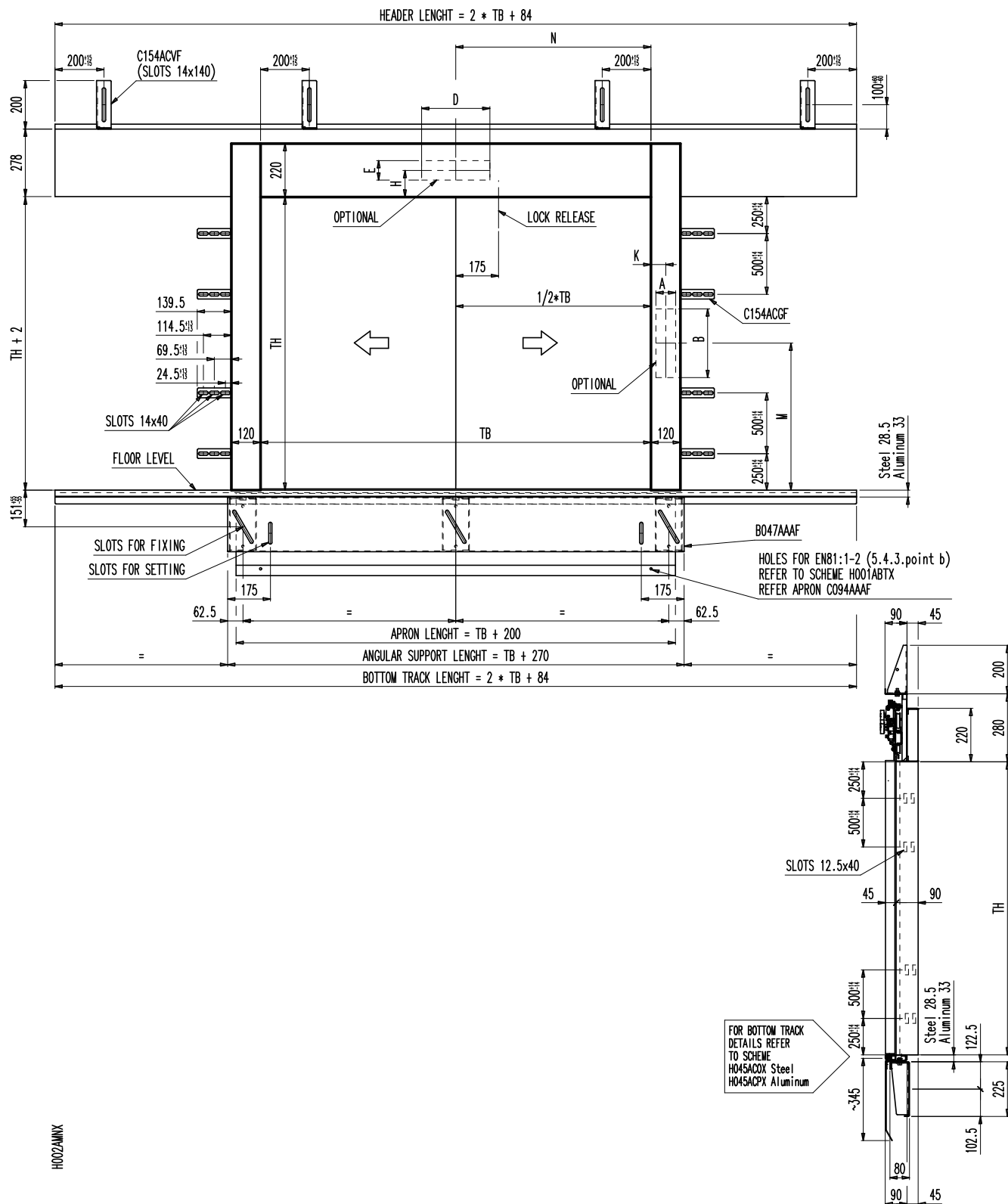
NELLA VERSIONE PNP N/O E RICHIESTO CON SEMATIC ENCODER SYSTEM® O SEMATIC DRIVE SYSTEM® QUESTO DISPOSITIVO VIENE COLLEGATO DIRETTAMENTE AL CONTROLLER ENCODER E QUINDI NON HA BISOGNO DI ALIMENTATORE O DI ALTRA INTERFACCIA CON IL QUADRO DI MANOVRA.

**NOTE:** The cabin side frame with its suitable recess is to be foreseen for fire rated doors with extrarun and for standard doors with extra run (H001AABX).

HINWEIS: Bei Feuerschutz-Türen mit Extrafahrt und bei Standard-Türen mit Extrafahrt ist der Kabineneinzug zu berücksichtigen (H001AABX)

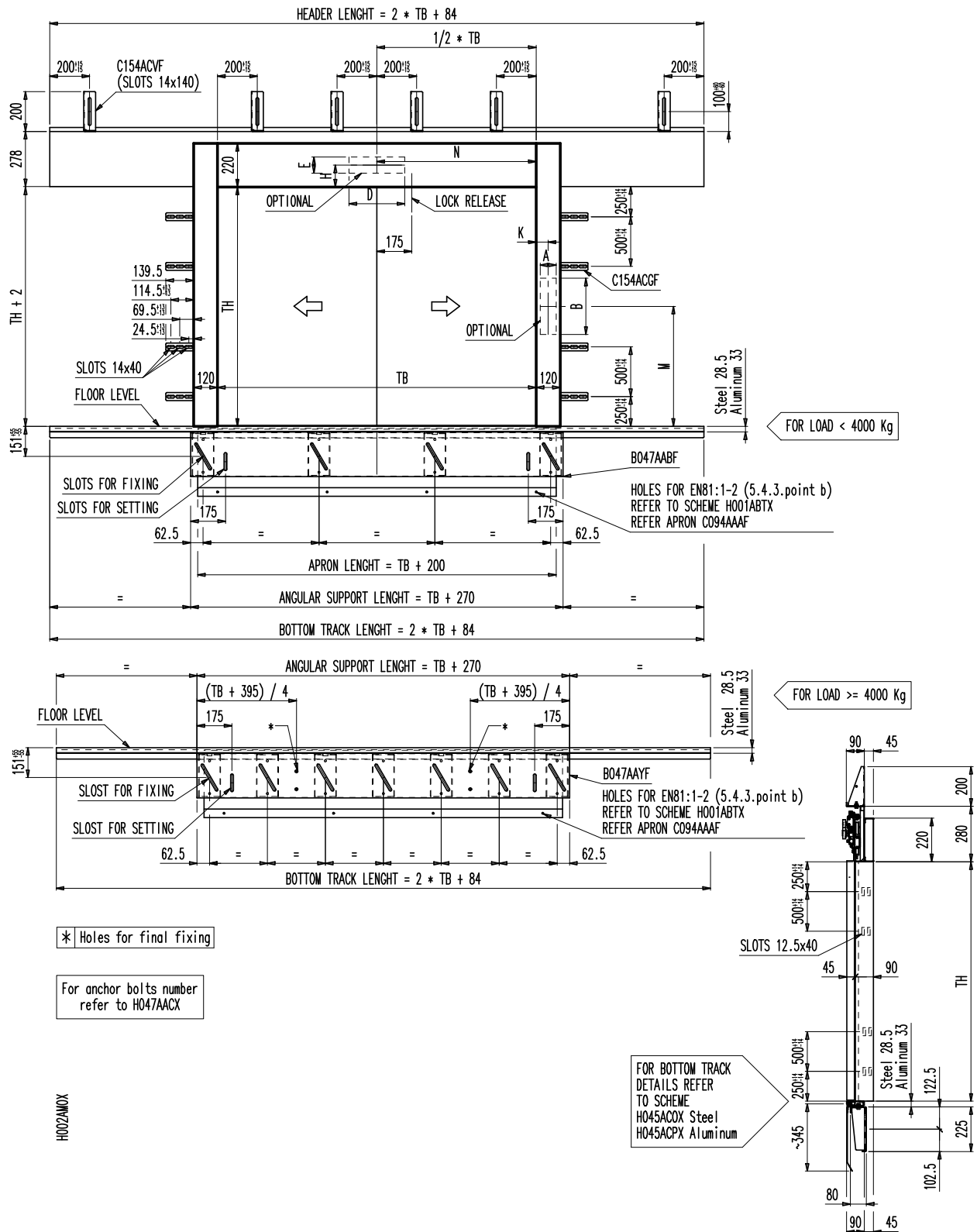
NOTA: Per porte tagliafuoco con extracorsa, e comunque per porte standard con extracorsa, prevedere la spalletta di cabina con adeguata rientranza (H001AABX)

### FRONT AND SIDE VIEW OF STANDARD LANDING DOOR TB=1000

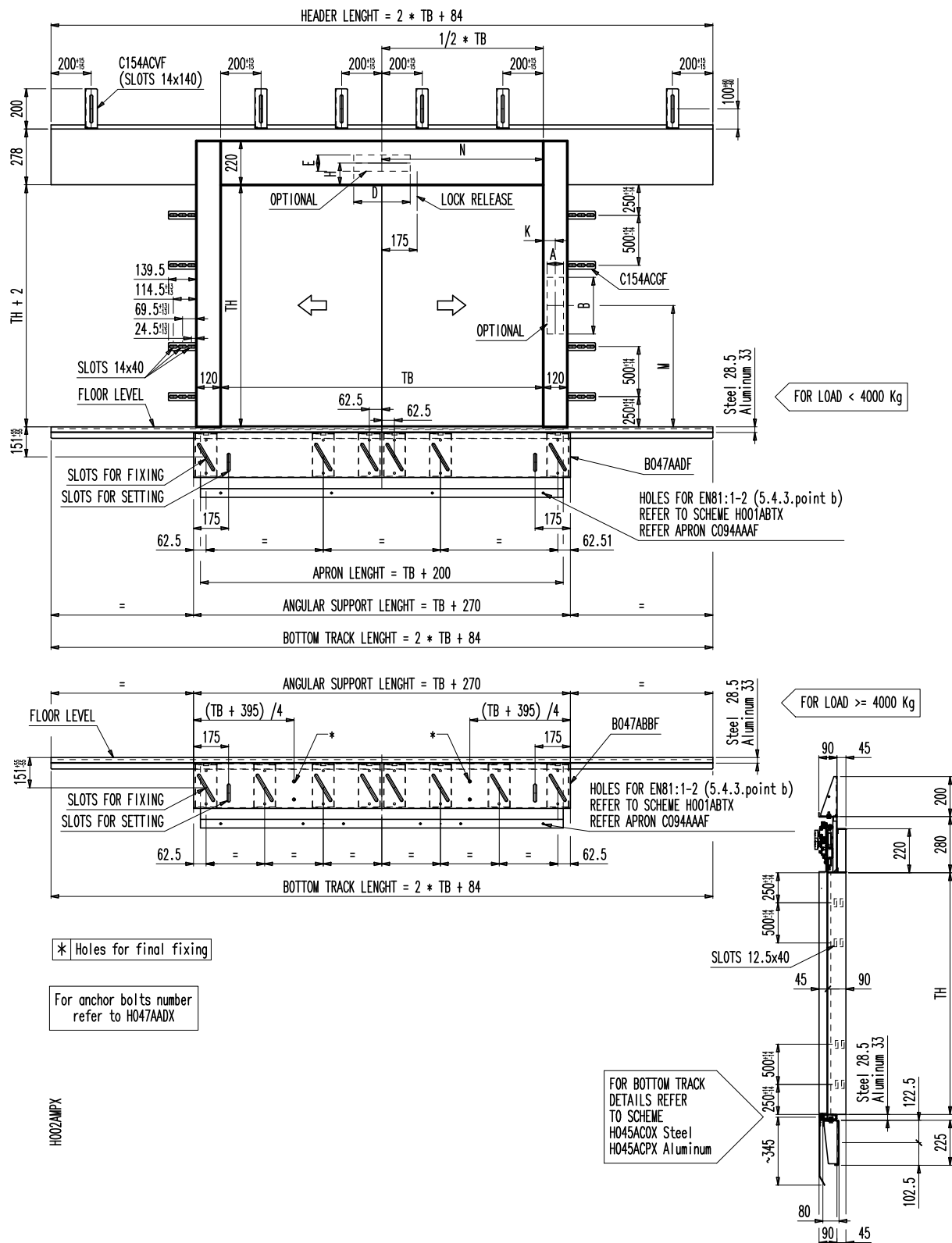


## LANDING DOOR

S 2Z

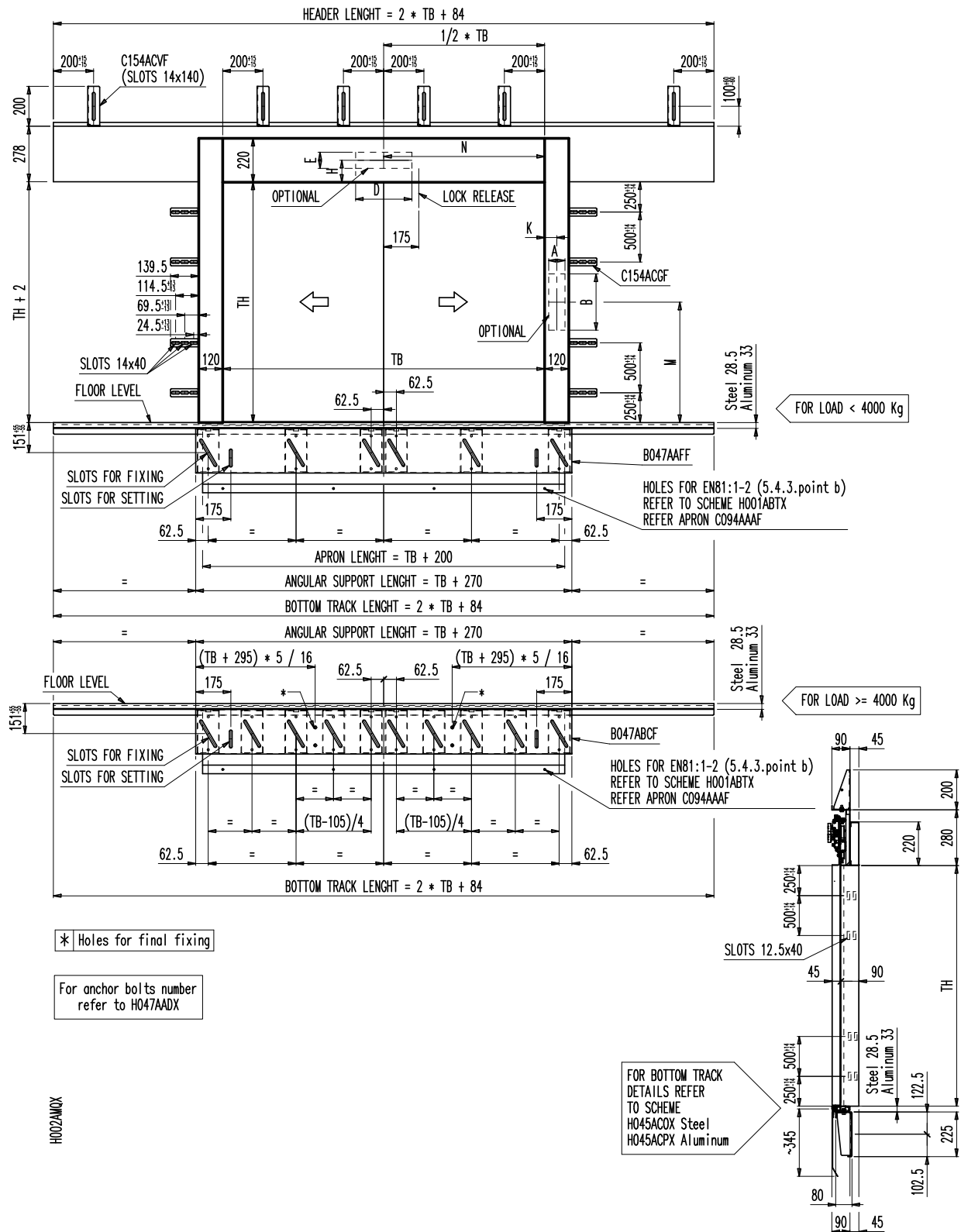
FRONT AND SIDE VIEW OF STANDARD LANDING DOOR  $1000 < TB \leq 1450$ 

### FRONT AND SIDE VIEW OF STANDARD LANDING DOOR 1450<TB≤1600



## LANDING DOOR

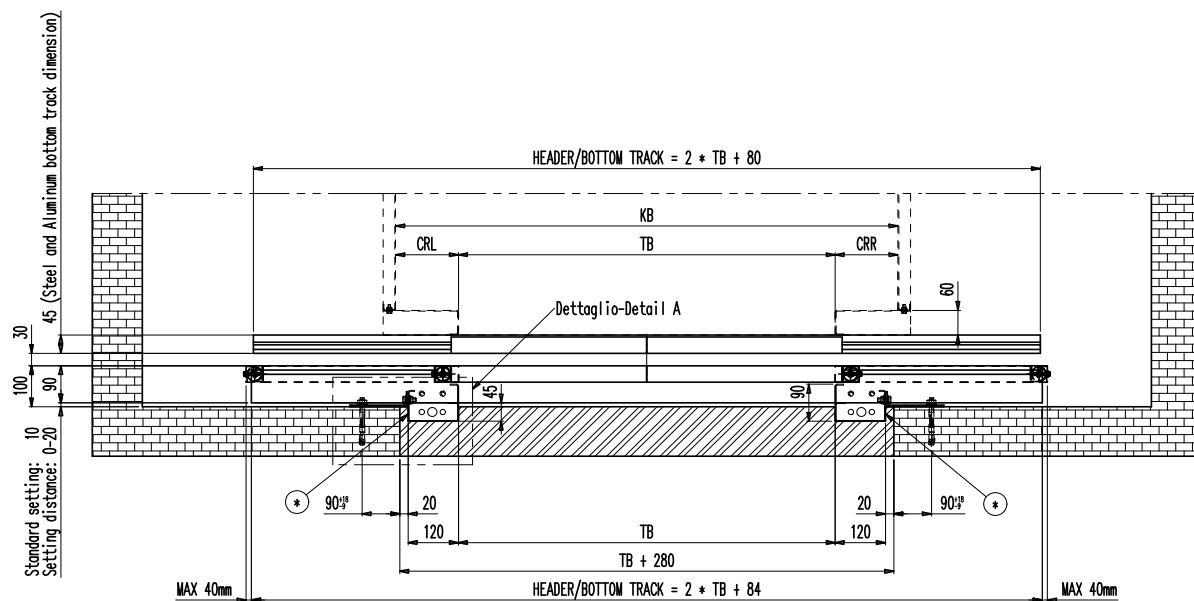
### FRONT AND SIDE VIEW OF STANDARD LANDING DOOR 1600<TB≤2000



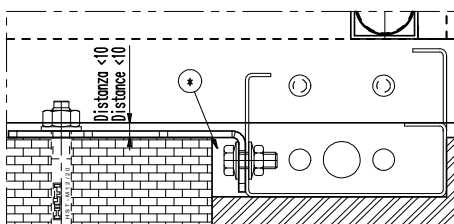
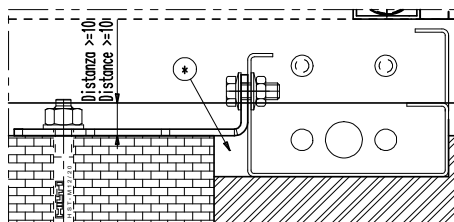
## FIXINGS K

K S 2Z

## COUPLING AND INSTALLATION CAR AND LANDING DOOR



Dettaglio-Detail A



\* INFILL BY OTHERS

CRR = Spalla interna cabina destra  
Internal right car front return

CRL = Spalla interna cabina sinistra  
Internal left car front return

KB = Larghezza interna cabina  
Internal car width

Standard setting: 10  
Setting distance: 0-20Fixing by  
anchor bolts  
NW M12x120Fixing by  
Hal fen-HS  
40-22 M12x60USE ONLY  
FOR LOAD <4000Kg

SLOTS 12.5x40

For load <4000 Kg use anchor bolts type NW M12x120  
For load ≥4000 Kg use anchor bolts type B M12x105

FOR FIXING DETAILS  
EN81:1-2 (5.4.3.point b)  
REFER TO SCHEME H094AABX

OPTIONAL  
NOT INCLUDED IN THE STANDARD SUPPLY  
NICHT ENTHALTEN IN DER STANDARD LIEFERUNG  
NON COMPRESO NELLA FORNITURA STANDARD

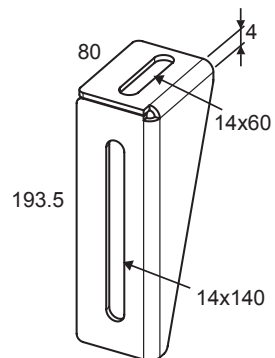
H001ABTX

**FIXINGS S**

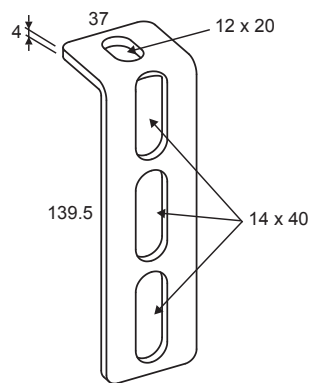
S 2Z

**LANDING DOOR FIXING BRACKETS - STANDARD**

## TOP STANDARD FIXING BRACKETS

**C154ACVF**

## SIDE STANDARD FIXING BRACKETS

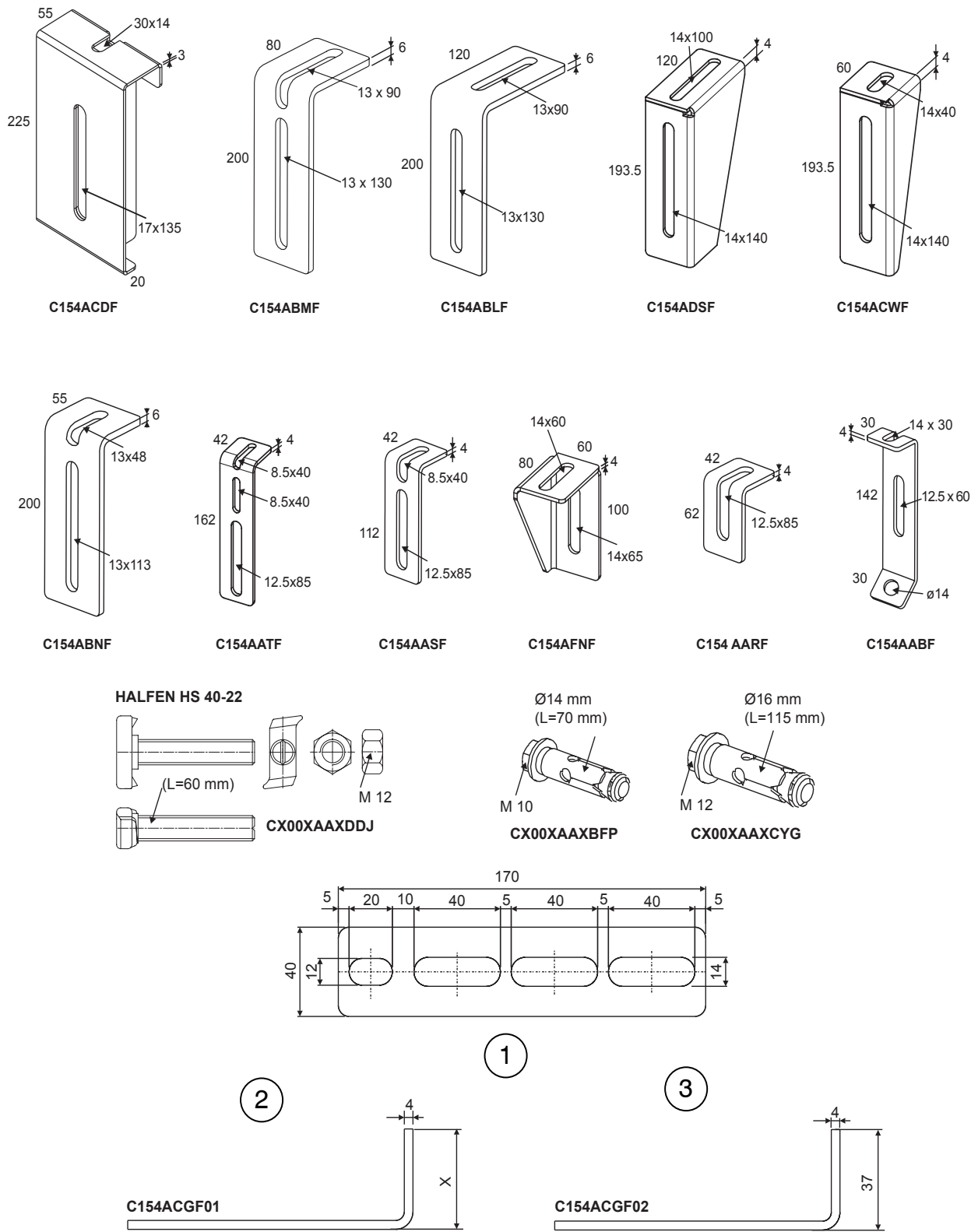
**C154ACGF02****BOTTOM STANDARD FIXING WITH ANGLE SUPPORT**

FIXINGS S

S 27

OPTIONAL FIXING BRACKETS AVAILABLE ON REQUEST

OPTION



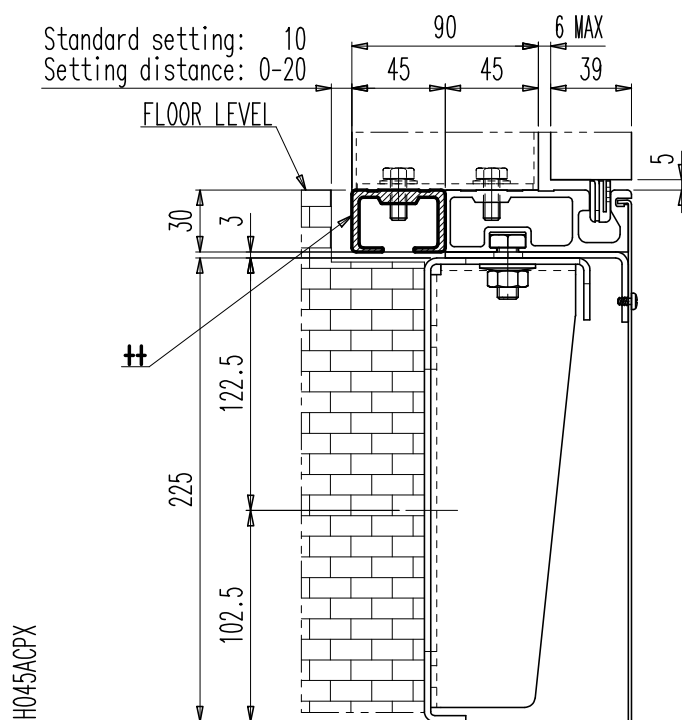
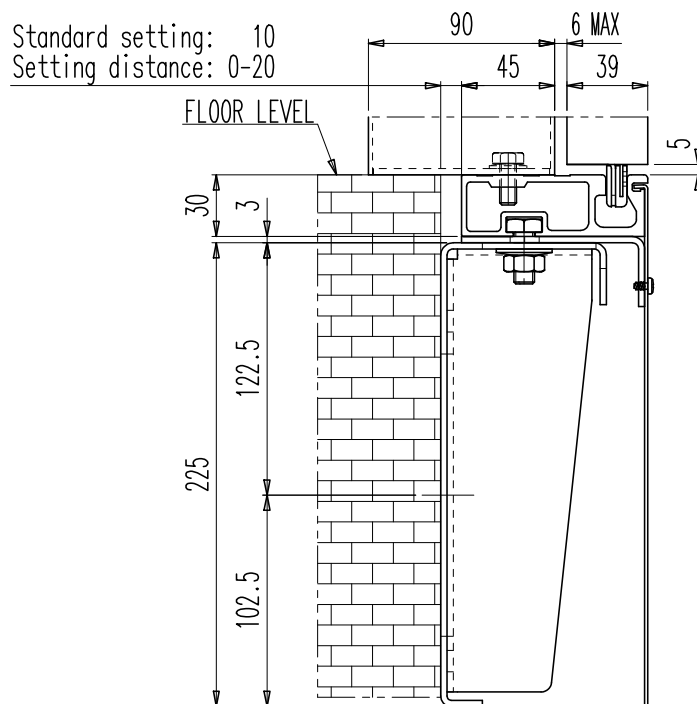
1	EXAMPLE BENDING	2	FLAT SIDE FIXING BRACKET (FOR BENDING "ON SITE")	3	FLAT SIDE FIXING BRACKET SUPPLIED ALREADY BENDED
---	-----------------	---	--	---	--



## BOTTOM TRACKS

S 2Z

## ALUMINIUM BOTTOM TRACK SUPPORT FIXING SCHEME

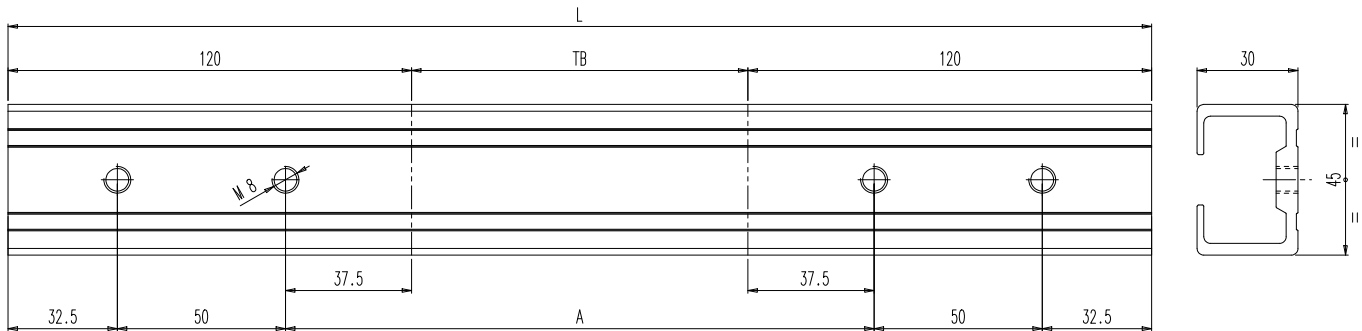


OPTION ++  
ADDITIONAL SILL ELEMENT C149AKGA

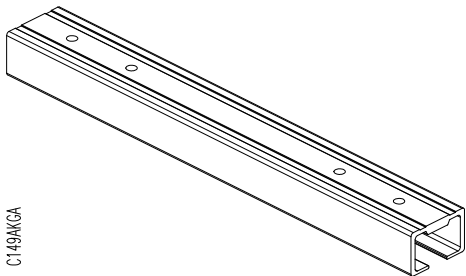
ALUMINIUM TRACK

S 22

CLOSE ADDITIONAL PROFILE FOR ALUMINIUM TRACK



A	TB+75
L	TB+240

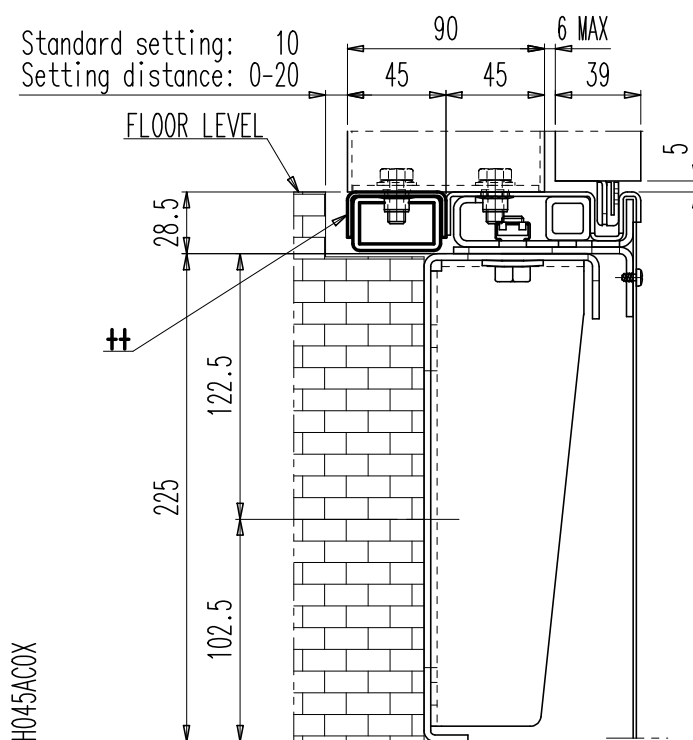
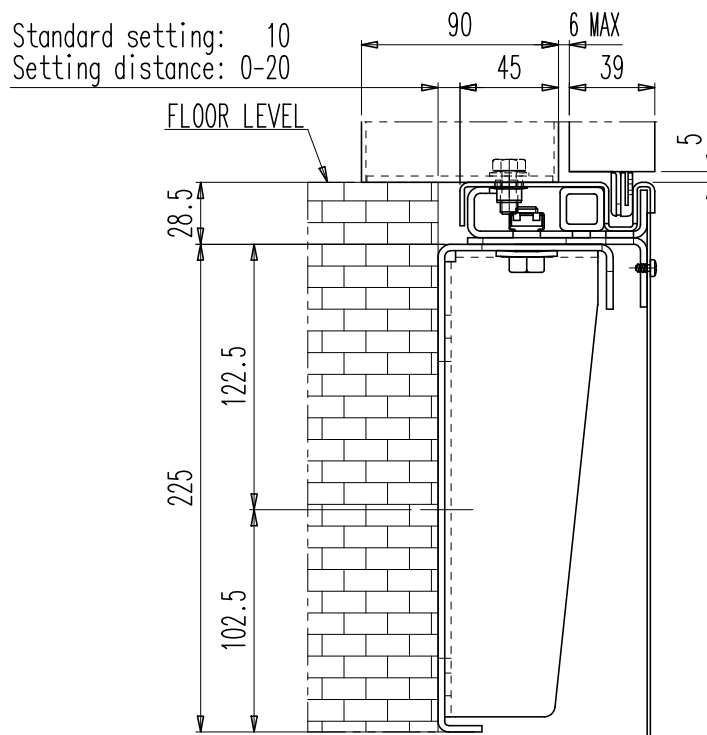


C149AKGA

## BOTTOM TRACKS

S 2Z

## STEEL BOTTOM TRACK SUPPORT FIXING SCHEME

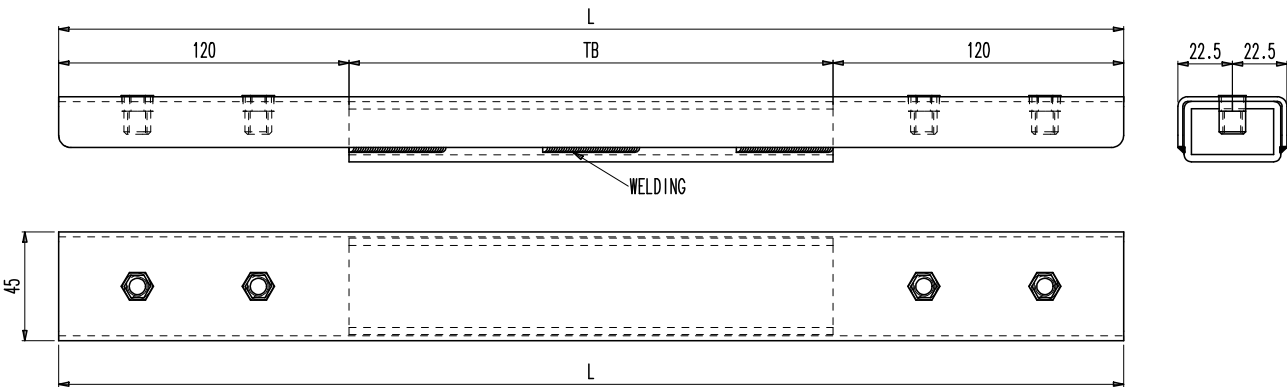


OPTION ++  
ADDITIONAL SILL ELEMENT B149AFVX

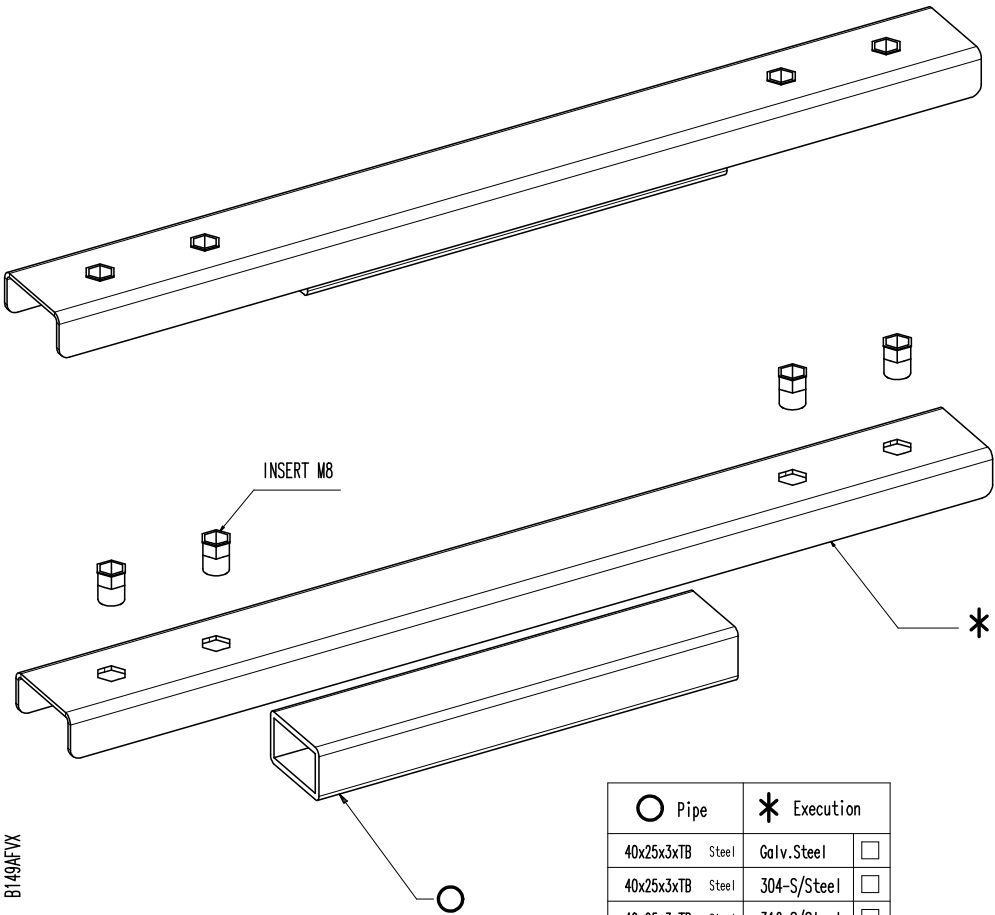
STEEL/INOX BOTTOM TRACK

S 22

CLOSE ADDITIONAL PROFILE STEEL/INOX BOTTOM TRACK



L TB+240

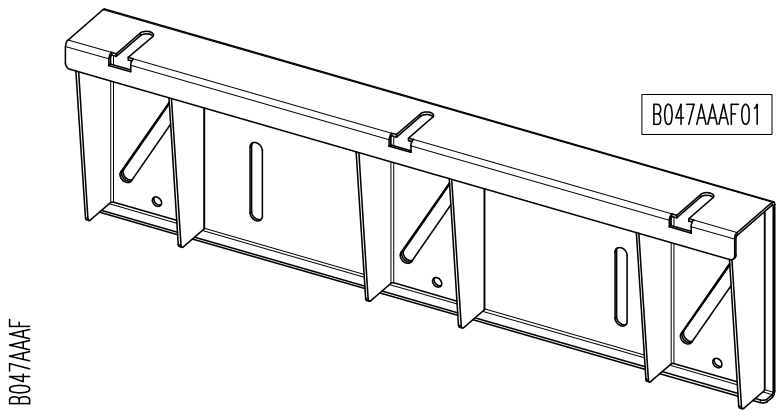
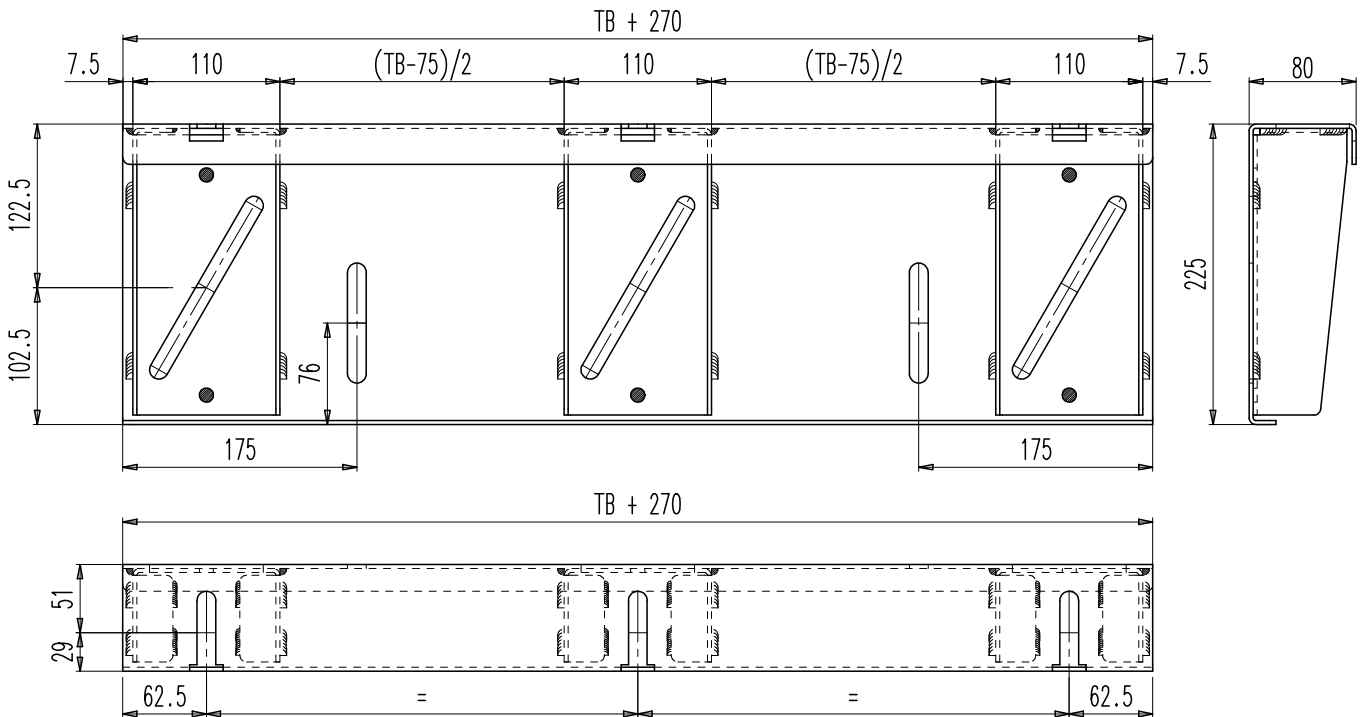


○ Pipe	* Execution
40x25x3xTB Steel	Galv.Steel <input type="checkbox"/>
40x25x3xTB Steel	304-S/Steel <input type="checkbox"/>
40x25x3xTB Steel	316-S/Steel <input type="checkbox"/>

ANGLE SUPPORT

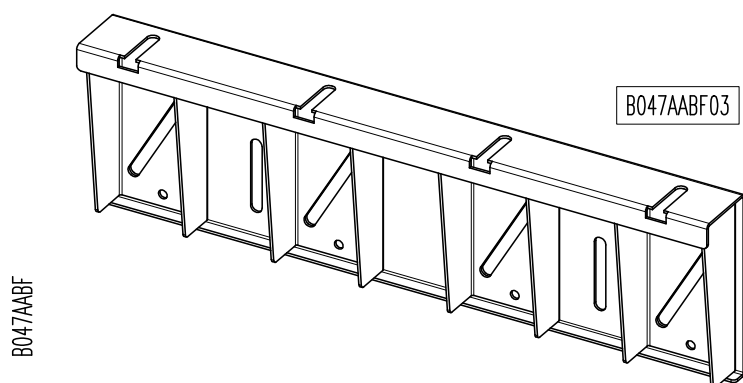
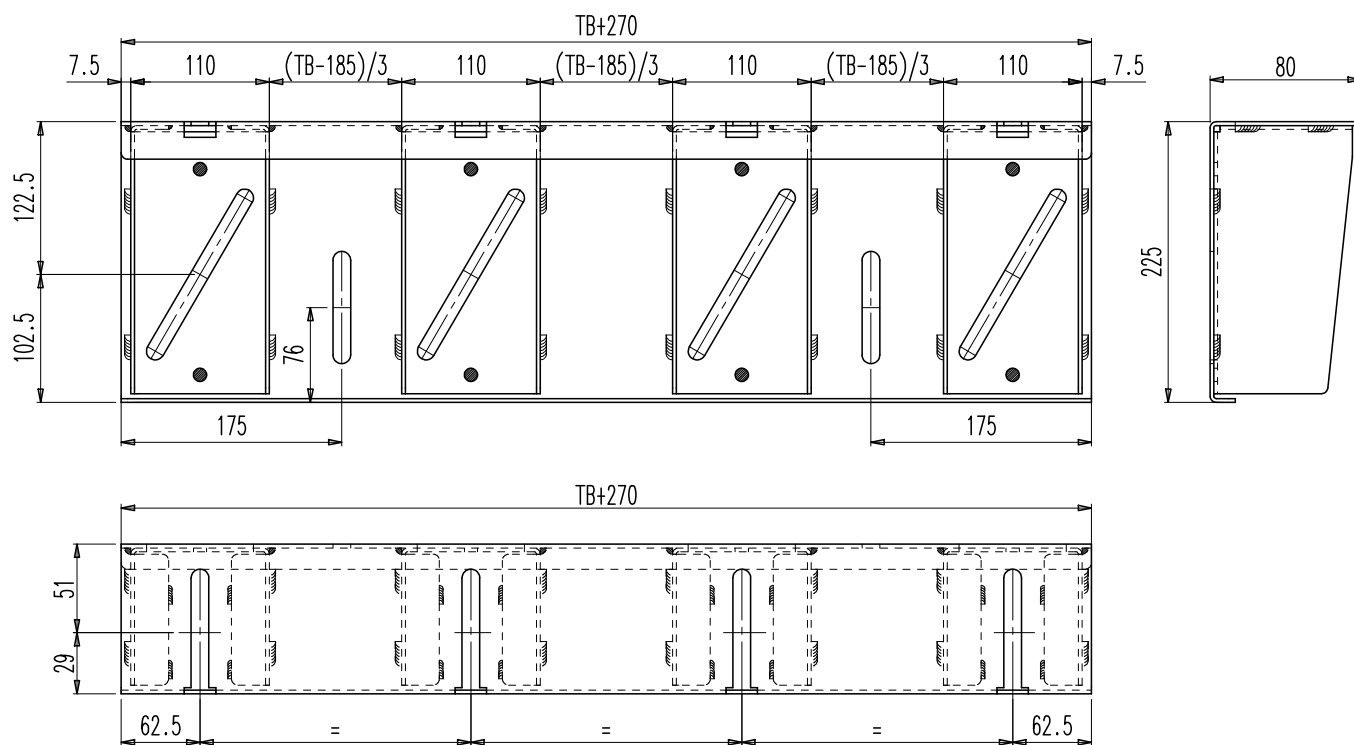
S 2Z

**BOTTOM TRACK SUPPORT TB=1000 - LOAD CAPACITY < 4000 KG**



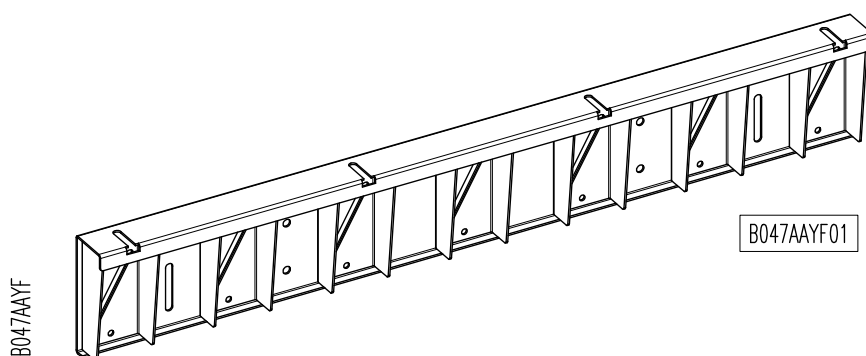
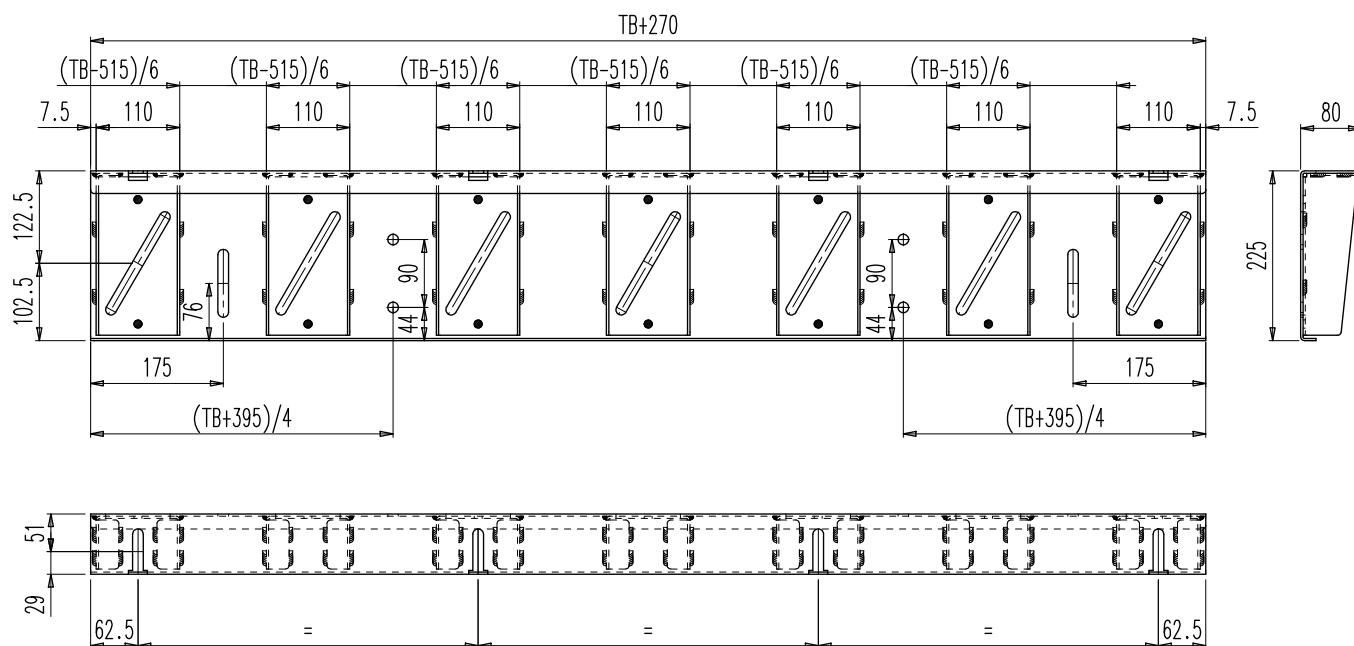
## ANGLE SUPPORT

S 2Z

FULL WITH ANGLE SUPPORT  $1000 < TB \leq 1450$  - LOAD CAPACITY < 4000 KG

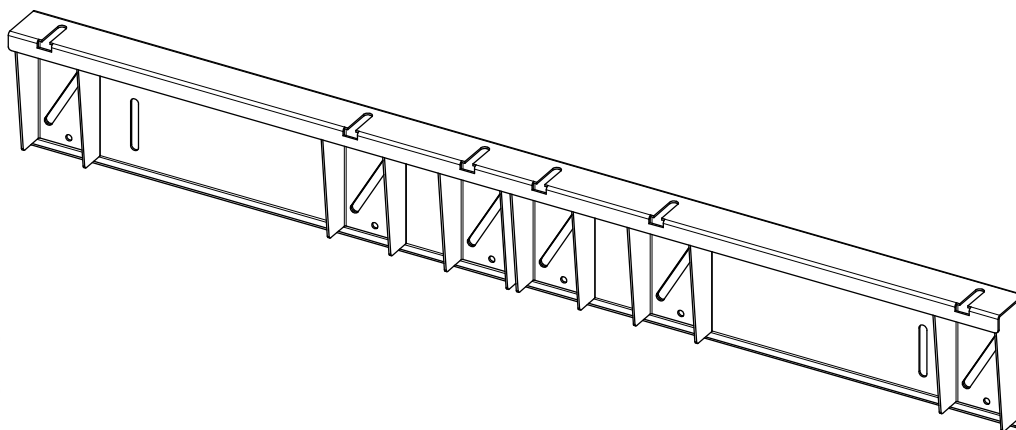
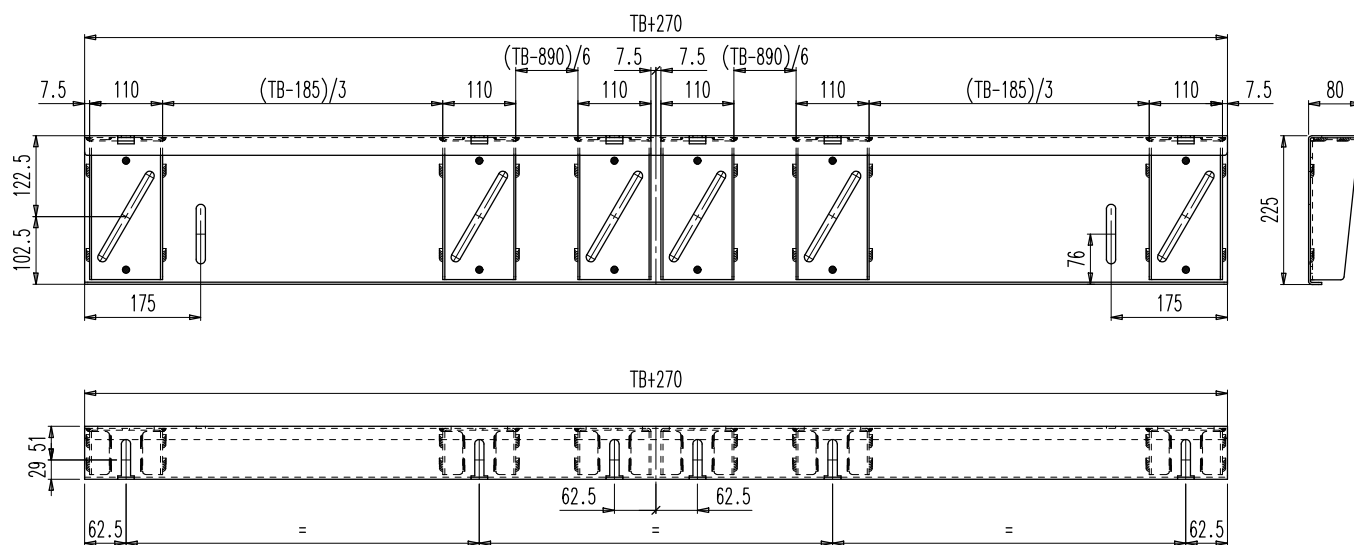
## ANGLE SUPPORT

S 22

FULL WITH ANGLE SUPPORT  $1000 < TB \leq 1450$  - LOAD CAPACITY  $\geq 4000$  KG

## ANGLE SUPPORT

S 22

**FULL WITH ANGLE SUPPORT  $1450 < TB \leq 1600$  - LOAD CAPACITY  $< 4000$  KG**

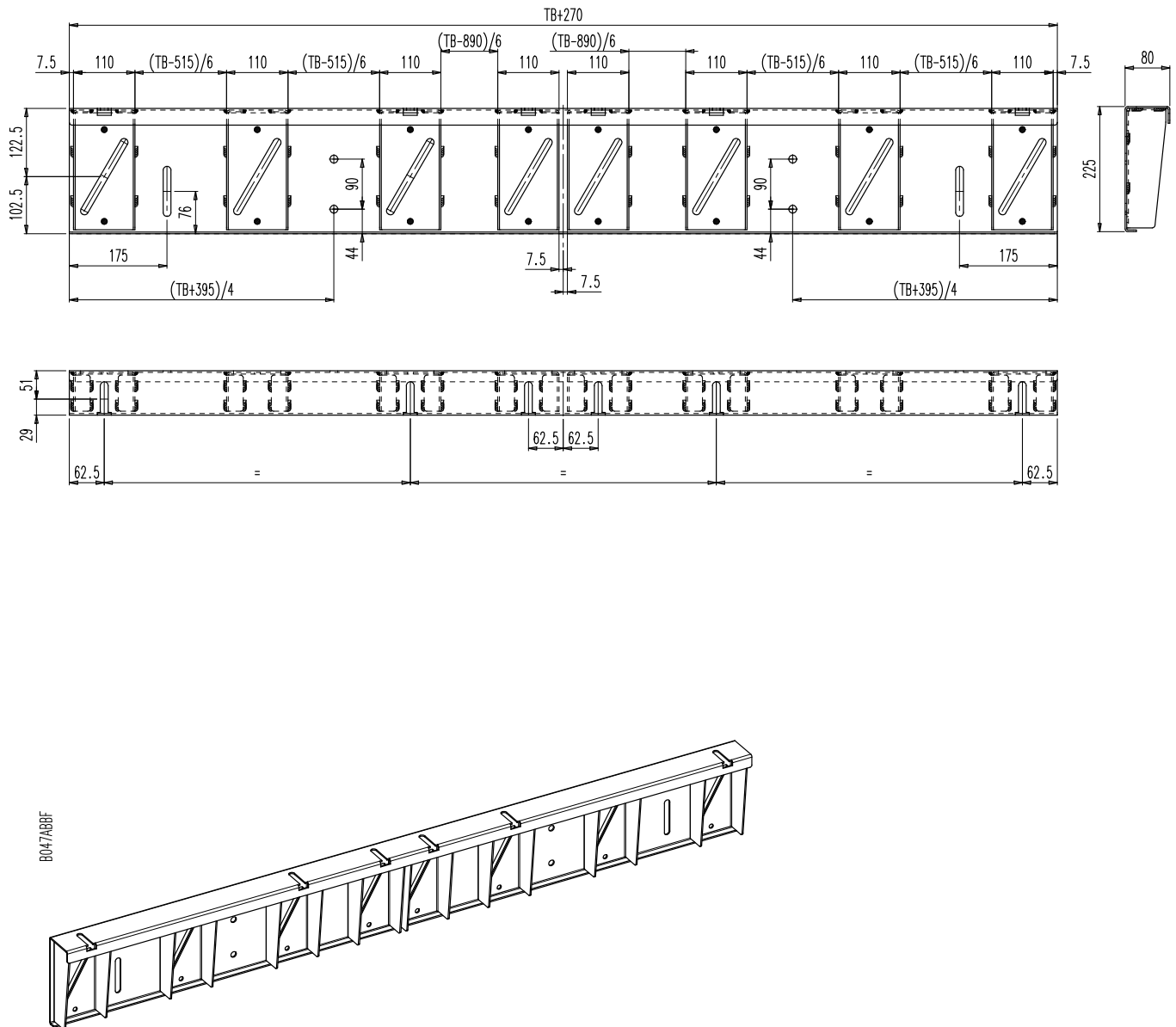
B047AADF



## ANGLE SUPPORT

S 2Z

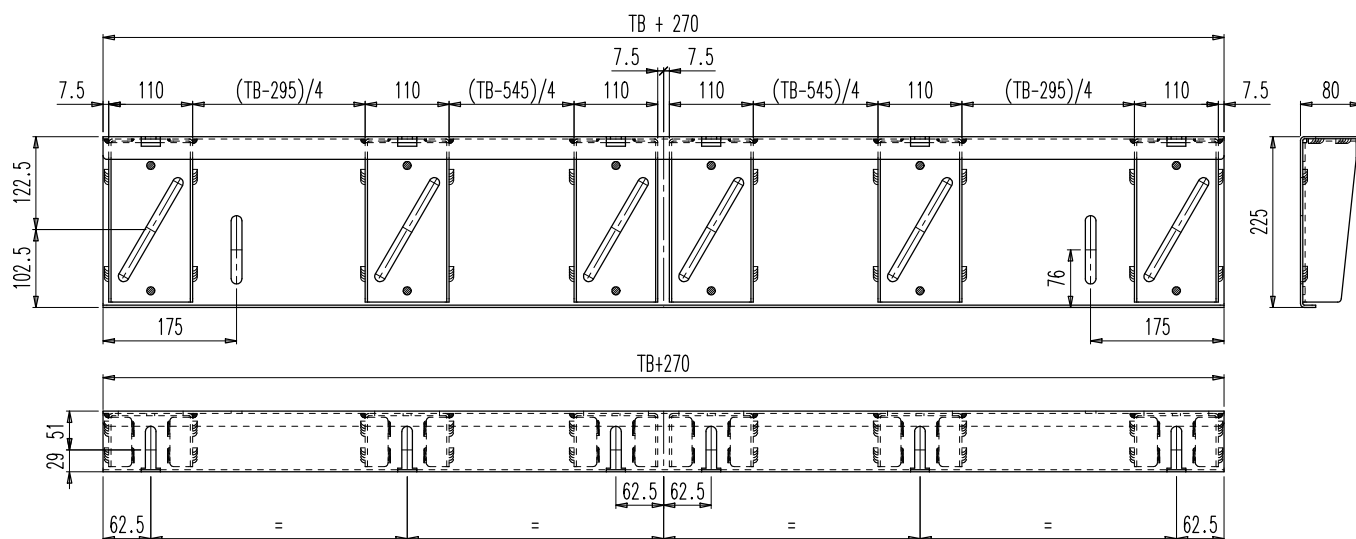
**FULL WITH ANGLE SUPPORT 1450<TB≤1600 - LOAD CAPACITY ≥ 4000 KG**



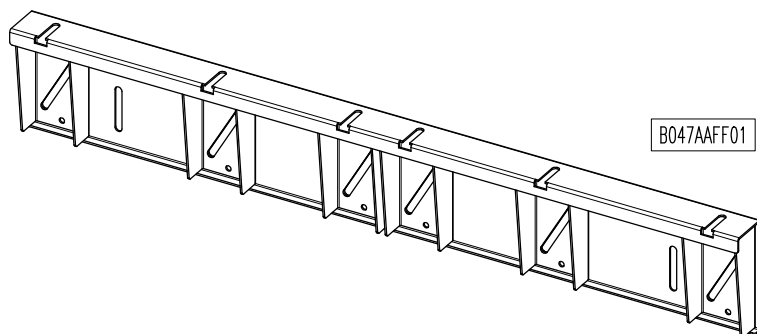
## ANGLE SUPPORT

S 22

## FULL WITH ANGLE SUPPORT 1600&lt;TB≤2000 - LOAD CAPACITY &lt; 4000 KG



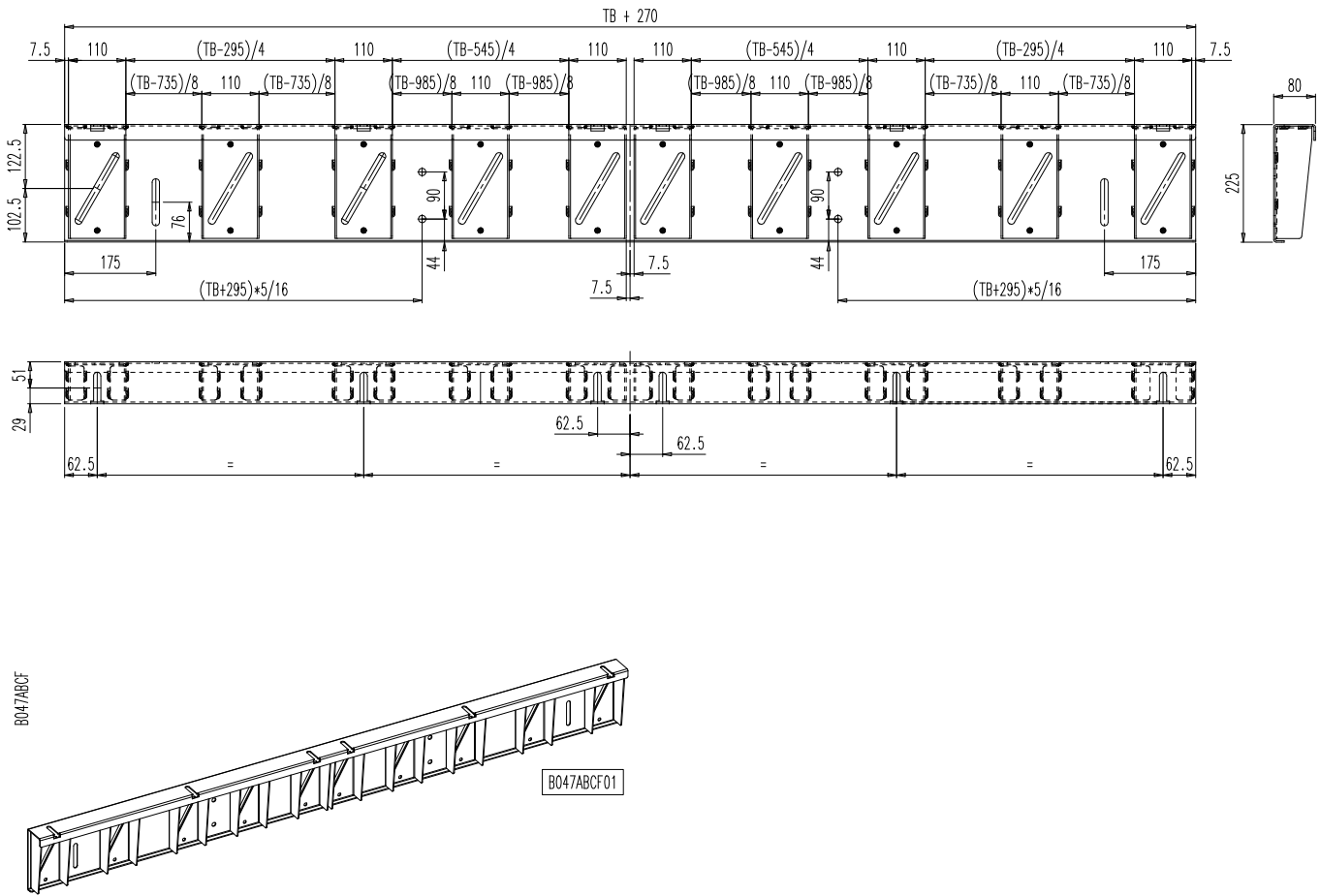
B047AAFF



ANGLE SUPPORT

S 2Z

FULL WITH ANGLE SUPPORT 1600<TB≤2000 - LOAD CAPACITY ≥ 4000 KG



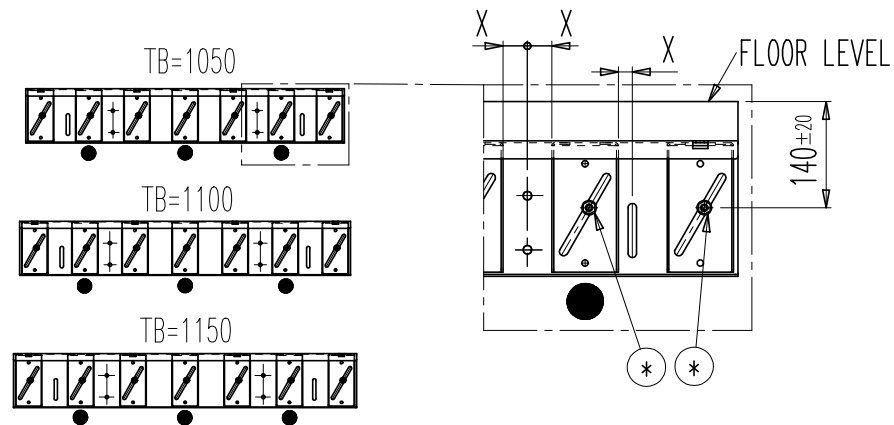
## ANGLE SUPPORT

S 2Z

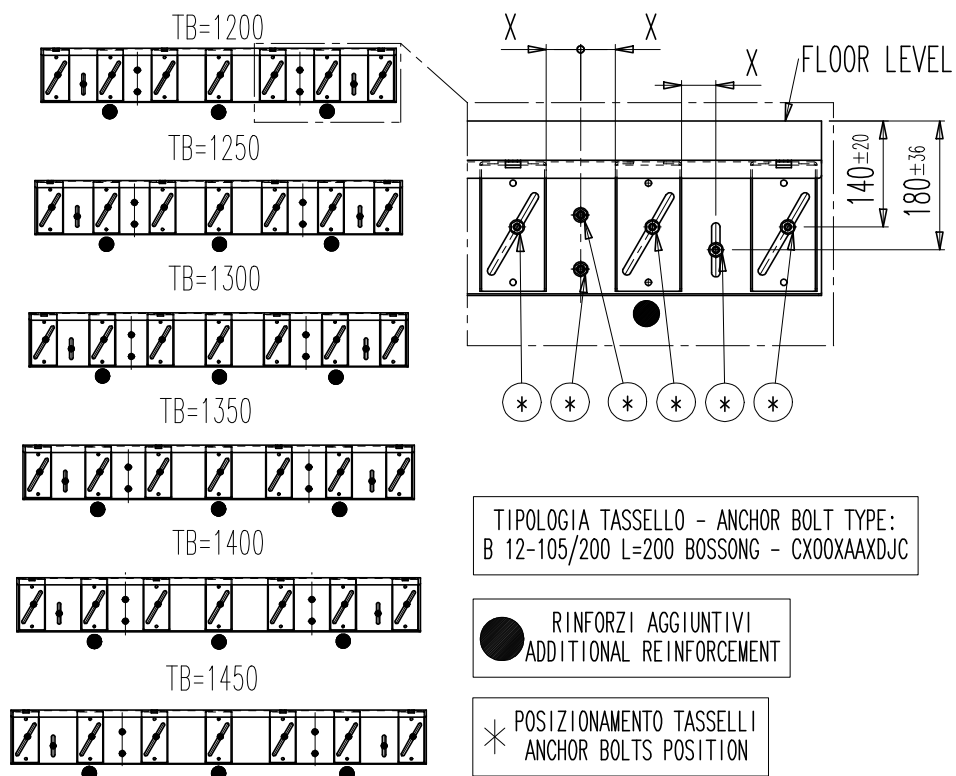
FIXING POINTS SCHEME FOR FULL WIDTH ANGLE SUPPORT FOR LIFTS WITH LOAD CAPACITY  $\geq 4000$  KG -  $1000 < TB \leq 1450$ 

ANGULAR CODE B047AAYF  
 AUFLAGENWINKER KODERN B047AAYF  
 CODICE ANGOLARE B047AAYF

USE N° 7 ANCHOR BOLTS FOR ANY TYPE  
 N° 7 DUEBELN JE TYP  
 N° 7 TASSELLI PER OGNI TIPOLOGIA



USE N° 13 ANCHOR BOLTS FOR ANY TYPE  
 N° 13 DUEBELN JE TYP  
 N° 13 TASSELLI PER OGNI TIPOLOGIA



TIPOLOGIA TASSELLO - ANCHOR BOLT TYPE:  
 B 12-105/200 L=200 BOSSONG - CX00XAAXDJC

● RINFORZI AGGIUNTIVI  
 ADDITIONAL REINFORCEMENT

\* POSIZIONAMENTO TASSELLI  
 ANCHOR BOLTS POSITION

X INSERIRE TASSELLO QUANDO  $X \geq 50$ mm  
 INSERT ANCHOR BOLTS WHEN  $X \geq 50$ mm

H047AACX

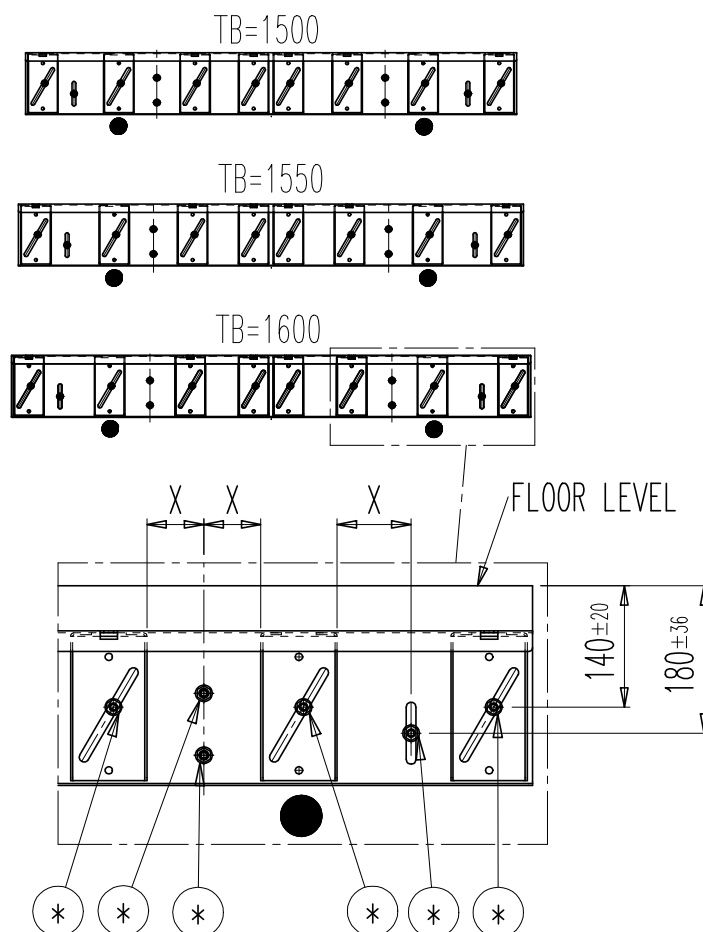
## ANGLE SUPPORT

S 2Z

FIXING POINTS SCHEME FOR FULL WIDTH ANGLE SUPPORT FOR LIFTS WITH LOAD CAPACITY  $\geq 4000$  KG -  $1450 < TB \leq 1600$ 

ANGULAR CODE B047AABF  
 AUFLAGENWINKER KODERN B047AABF  
 CODICE ANGOLARE B047AABF

USE N° 14 ANCHOR BOLTS FOR ANY TYPE  
 N° 14 DUEBELN JE TYP  
 N° 14 TASSELLI PER OGNI TIPOLOGIA



TIPOLOGIA TASSELLO - ANCHOR BOLT TYPE:  
 B12-105/200 L=200 BOSSONG - CX00XAAXDJC

● RINFORZI AGGIUNTIVI  
 ADDITIONAL REINFORCEMENT

\* POSIZIONAMENTO TASSELLI  
 ANCHOR BOLTS POSITION

X INSERIRE TASSELLO QUANDO  $X \geq 50$ mm  
 INSERT ANCHOR BOLTS WHEN  $X \geq 50$ mm

H047AADX

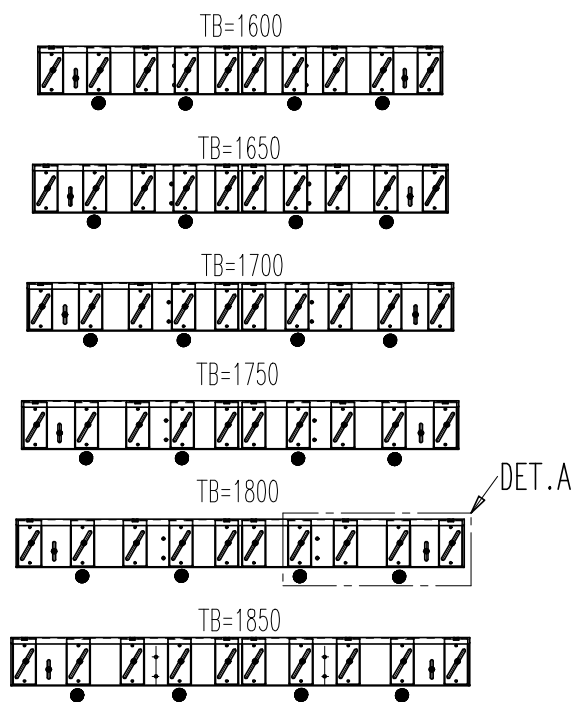
## ANGLE SUPPORT

S 2Z

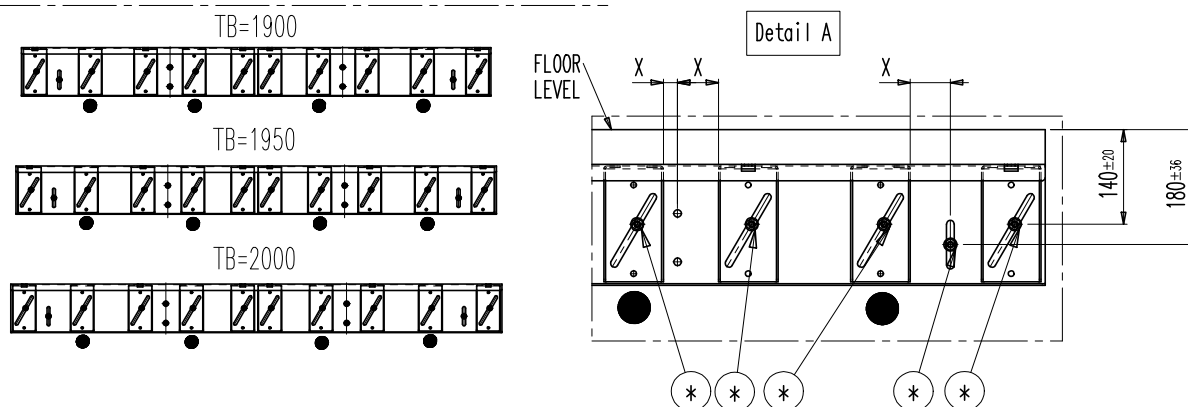
FIXING POINTS SCHEME FOR FULL WIDTH ANGLE SUPPORT FOR LIFTS WITH LOAD CAPACITY  $\geq 4000$  KG -  $1600 < TB \leq 2000$ 

ANGULAR CODE B047ABCF  
 AUFLAGENWINKER KODERN B047ABCF  
 CODICE ANGOLARE B047ABCF

USE N° 12 ANCHOR BOLTS FOR ANY TYPE  
 N° 12 DUEBELN JE TYP  
 N° 12 TASSELLI PER OGNI TIPOLOGIA



USE N° 16 ANCHOR BOLTS FOR ANY TYPE  
 N° 16 DUEBELN JE TYP  
 N° 16 TASSELLI PER OGNI TIPOLOGIA



TIPOLOGIA TASSELLO - ANCHOR BOLT TYPE:  
 B 12-105/200 L=200 BOSSONG - CX00XAAXDJC

● RINFORZI AGGIUNTIVI  
 ADDITIONAL REINFORCEMENT

\* POSIZIONAMENTO TASSELLI  
 ANCHOR BOLTS POSITION

X INSERIRE TASSELLO QUANDO  $X \geq 50$ mm  
 INSERT ANCHOR BOLTS WHEN  $X \geq 50$ mm

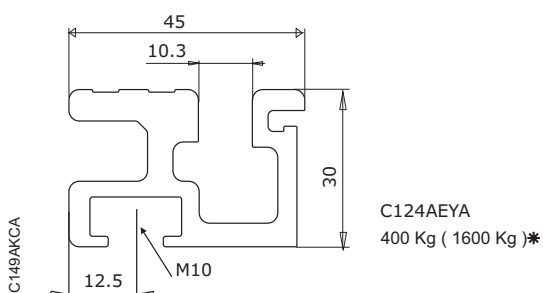
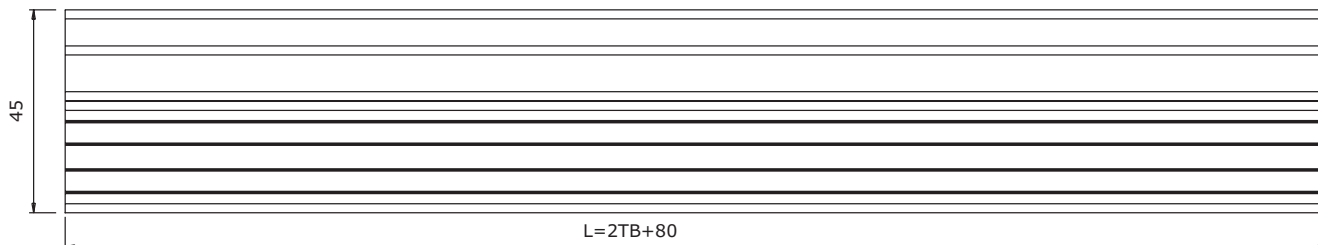
H047AADX

## BOTTOM TRACKS

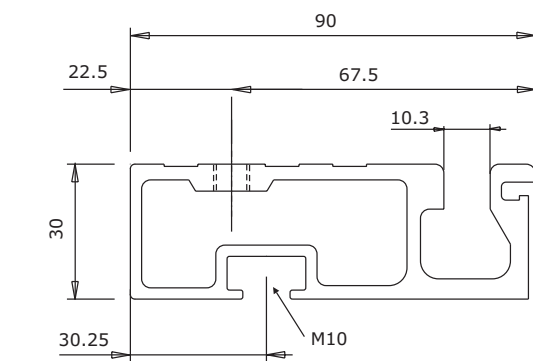
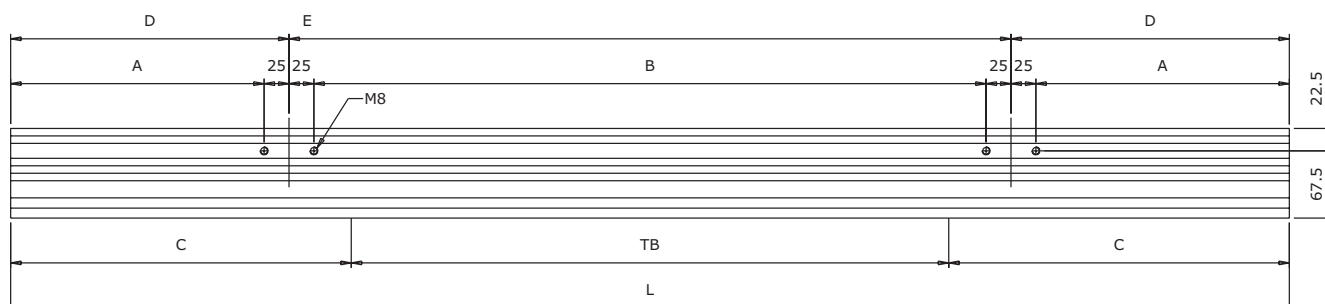
K-S 2Z

## COMPLETE ALUMINIUM BOTTOM TRACK

## K2Z CAR DOOR



## S2Z LANDING DOOR



<b>A</b>	1/2TB - 45,5	<b>D</b>	1/2TB - 20,5
<b>B</b>	TB+75	<b>E</b>	TB + 125
<b>C</b>	1/2TB + 42	<b>L</b>	2TB + 84

\* The load mentioned above refers exclusively to a vertically applied static force on the weakest point of the sills, starting from the assumption of rigidly fixed sill supports. Any other consideration as far as the method of fixation (of the sill supports) is concerned is excluded. The figures given into brackets refer to the load of carriages with four wheels.

\* Die oben genannte Belastung bezieht sich ausschließlich auf eine senkrecht auf die Schwellen wirkende, statische Last, welche an der ungünstigsten Stelle auf einen steifen Befestigungswinkel wirkt. Betrachtungen zur Befestigungsmethode (des Winkels) sind dabei nicht berücksichtigt. Die Angaben in Klammern beziehen sich auf die Belastung durch vierrädrige Wagen.

\* La portata sopra indicata si riferisce esclusivamente alle soglie con carico statico applicato verticalmente sulla parte più cedevole e con fissaggio con staffe rigide. Sono pertanto escluse considerazioni sui dispositivi di fissaggio. I numeri tra parentesi si riferiscono al carico di carrelli su 4 ruote.

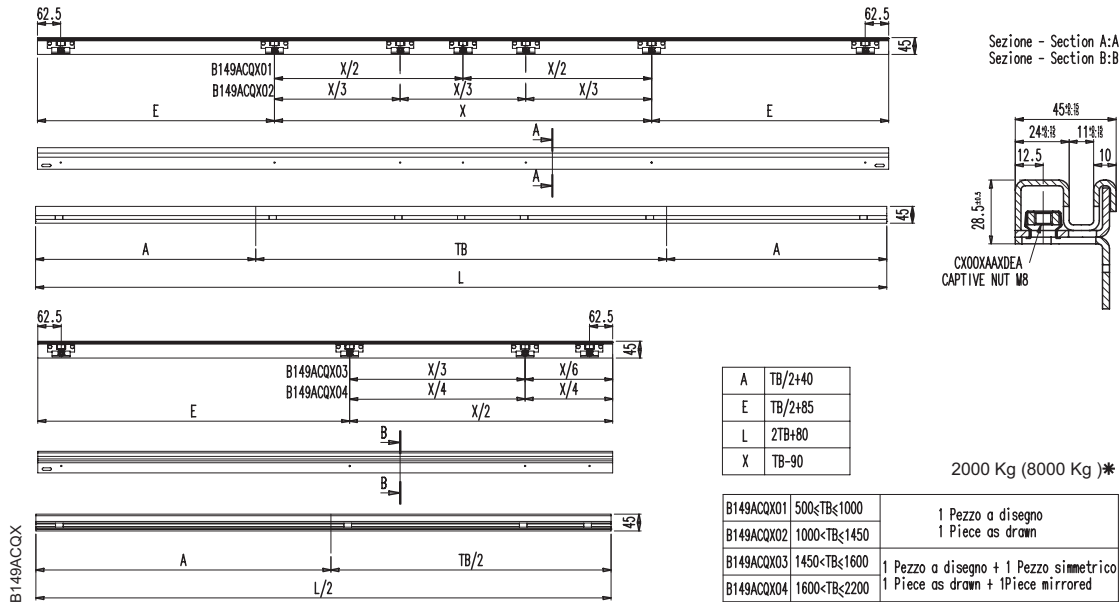
## BOTTOM TRACKS

K-S 2Z

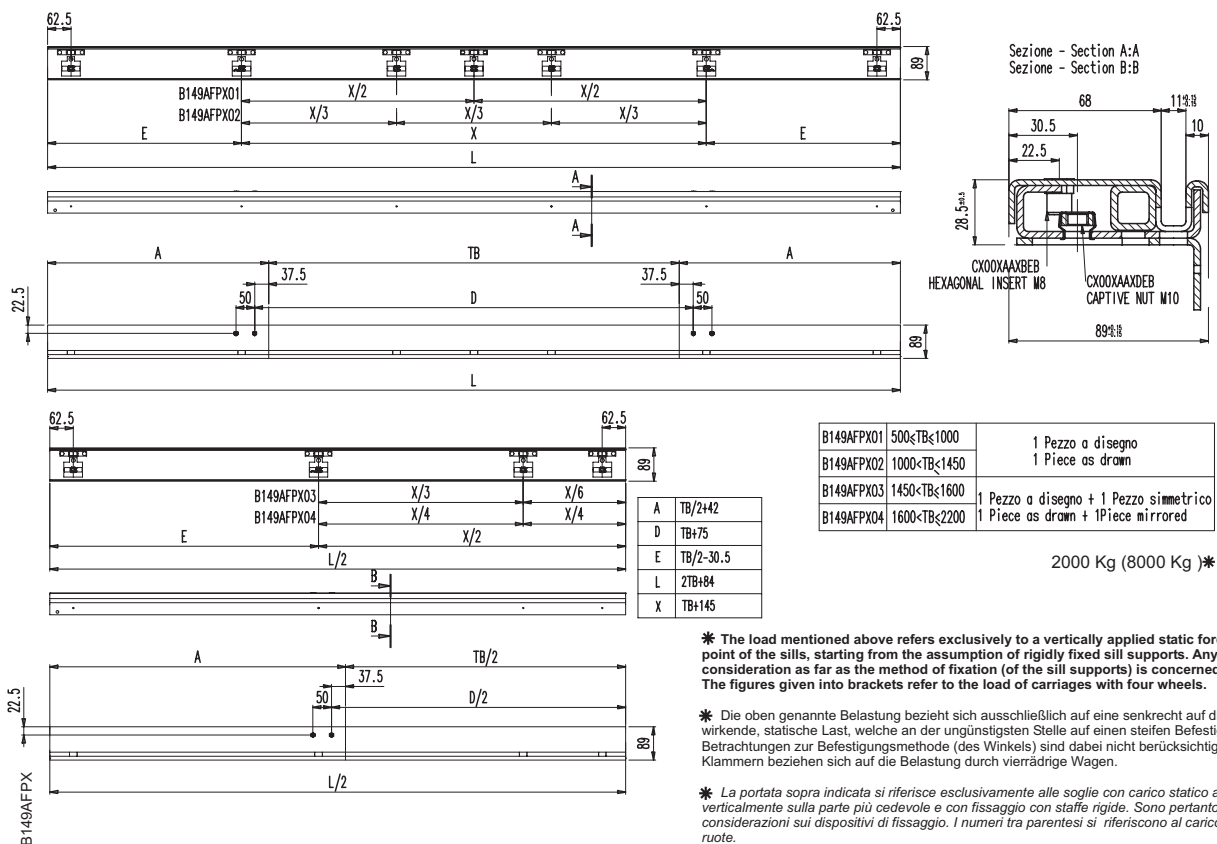
## SELFSTANDING STEEL/STAINLESS STEEL BOTTOM TRACK

OPTION

## K2Z CAR DOOR



## S2Z LANDING DOOR





## FRAMED GLASS

2Z

## FRAMED GLASS

OPTION

Type	2L-R	3L-R	2Z	4Z	6Z
TB	TH				
1000	2000-2500	2000-2500	2000-2500	2000-2300	-
1100	2000-2500	2000-2500	2000-2500	2000-2300	-
1200	2000-2500	2000-2500	2000-2500	2000-2300	-
1300	2000-2500	2000-2500	2000-2500	2000-2500	-
1400	2000-2500	2000-2500	2000-2500	2000-2500	2000-2200
1500	2000-2500	2000-2500	2000-2500	2000-2500	2000-2300
1600	2000-2500	2000-2500	2000-2500	2000-2500	2000-2300
1700	2000-2500	2000-2500	2000-2500	2000-2500	2000-2300
1800	2000-2500	2000-2500	2000-2500	2000-2500	2000-2300
1900	-	-	-	2000-2500	2000-2300
2000	-	-	-	2000-2500	2000-2300
2100	-	-	-	2000-2500	2000-2300
2200	-	-	-	2000-2500	2000-2300
2300	-	-	-	2000-2500	2000-2300
2400	-	-	-	2000-2500	2000-2300
2500	-	-	-	2000-2500	2000-2300



FOR FIRE PROOF EXECUTION EN 81-58 E120 TH=&lt;2500

## FRAMED GLASS SCOOTER SHIELD OPTION

## FRAMED GLASS PANELS SHIELD PRO OPTION

OPTION

Type	2L-R	2Z	4Z
TB	TH		
800*	2000-2300	2000-2300	2000-2300
900*	2000-2300	2000-2300	2000-2300
1000	2000-2300	2000-2300	2000-2300
1100	2000-2300	2000-2300	2000-2300
1200	2000-2300	2000-2300	2000-2300
1300	2000-2300	2000-2300	2000-2300
1400	2000-2300	2000-2300	2000-2300
1500	-	-	2000-2300
1600	-	-	2000-2300
1700	-	-	2000-2300
1800	-	-	2000-2300
1900	-	-	2000-2300
2000	-	-	2000-2300
2100	-	-	2000-2300
2200	-	-	2000-2300
2300	-	-	2000-2300
2400	-	-	2000-2300
2500	-	-	2000-2300
2600	-	-	2000-2300
2700	-	-	2000-2300
2800	-	-	2000-2300



\* Custom based



Landing door only

**FULL GLASS**

2Z

**FULL GLASS****OPTION**

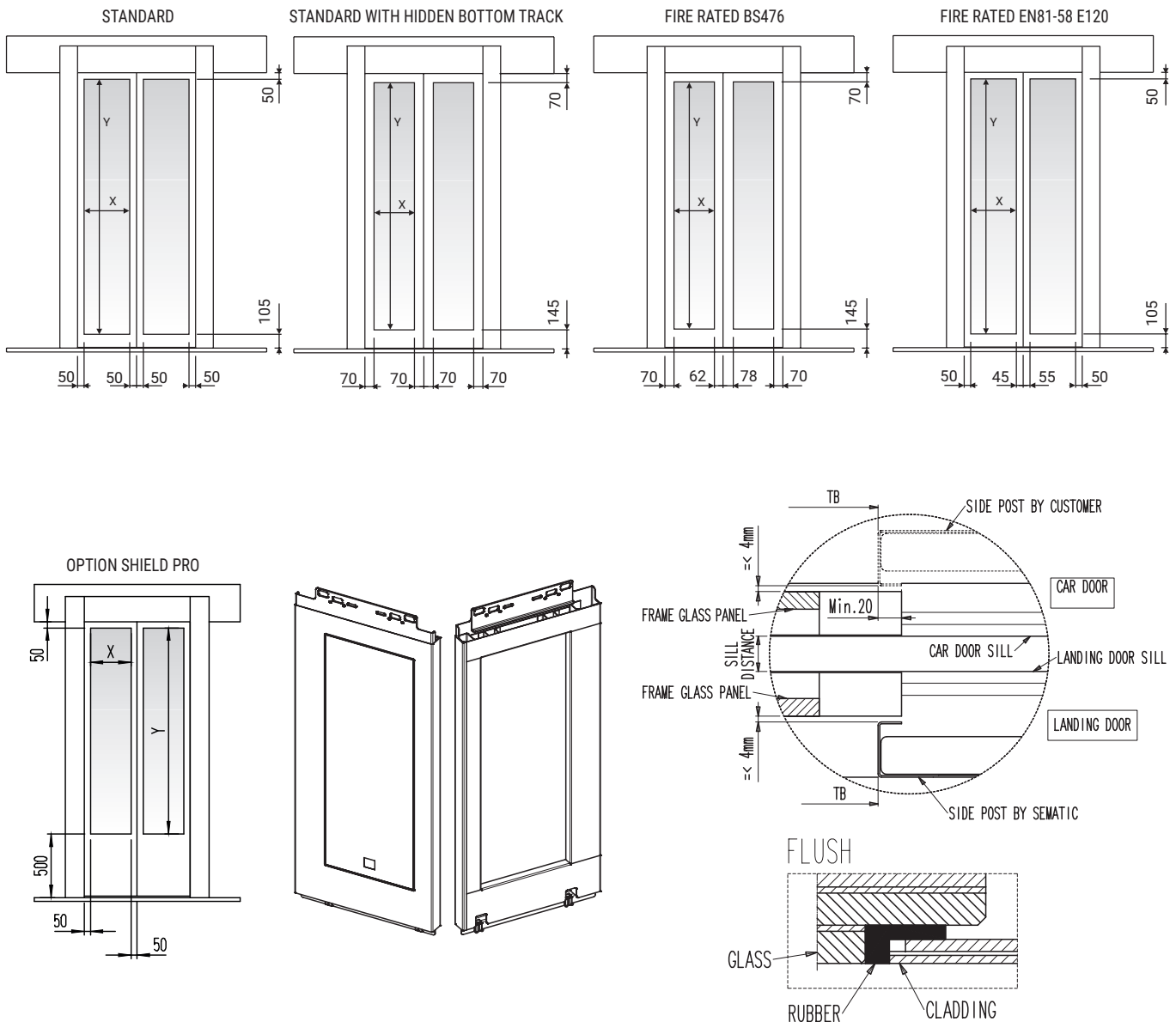
Type	2L-R	3L-R	2Z	4Z	6Z
TB	TH				
1000	2000-2300	2000-2300	2000-2300	2000-2300	-
1100	2000-2300	2000-2300	2000-2300	2000-2300	-
1200	2000-2500	2000-2300	2000-2500	2000-2300	-
1300	2000-2500	2000-2300	2000-2500	2000-2300	-
1400	2000-2500	2000-2300	2000-2500	2000-2300	2000-2200
1500	2000-2500	2000-2300	2000-2500	2000-2300	2000-2300
1600	2000-2500	2000-2300	2000-2500	2000-2300	2000-2300
1700	2000-2500	2000-2300	2000-2500	2000-2300	2000-2300
1800	2000-2500	2000-2500	2000-2500	2000-2300	2000-2300
1900	-	-	-	2000-2300	2000-2300
2000	-	-	-	2000-2300	2000-2300
2100	-	-	-	2000-2300	2000-2300
2200	-	-	-	2000-2300	2000-2300
2300	-	-	-	2000-2300	2000-2300
2400	-	-	-	2000-2500	2000-2300
2500	-	-	-	2000-2500	2000-2300

## FRAMED GLASS CONSTRUCTION

S 22

## CONSTRUCTION WITH FRAMED GLASS PANELS

OPTION



IN CASE OF WINDOW SMALLER THAT THE STANDARD ONE, PLEASE INDICATE DIMENSIONS X AND Y TOGETHER WITH THE POSITION.  
 X = \_\_\_\_\_ (insert formula)  
 Y = \_\_\_\_\_ (insert formula)

Abstract from...

SEMATIC DECLARATION OF CONFORMITY FOR GLASS PANELLED LIFT DOORS (Lift Directive 2014/33/EU)  
 The glass panelled lift doors supplied conform To Standard EN81-1/2:1998 or EN81-20:2014.

**NOTE:**

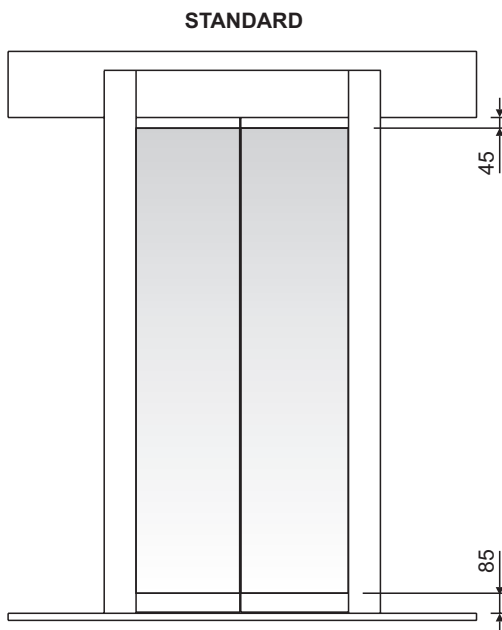
- 1 - panel cladded only by Sematic
- 2 - for the car door: by customer
- 3 - in case of "Shield Pro" option also car door need to be customized accordingly. Lower frame min 500mm

## FULL GLASS CONSTRUCTION

S 27

## CONSTRUCTION WITH FULL GLASS PANELS

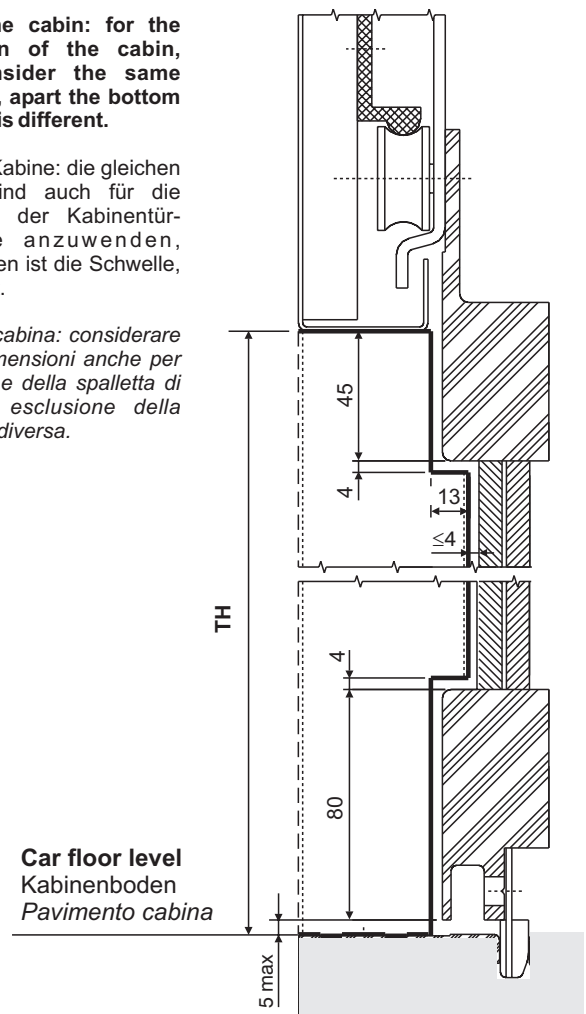
OPTION



**Note for the cabin: for the construction of the cabin, please consider the same dimensions, apart the bottom track which is different.**

Hinweis für Kabine: die gleichen Ausmaße sind auch für die Konstruktion der Kabinentür-Innenseite anzuwenden, ausgenommen ist die Schwelle, die anders ist.

*Nota per la cabina: considerare le stesse dimensioni anche per la costruzione della spalletta di cabina, ad esclusione della soglia che è diversa.*



Abstract from...

SEMATIC DECLARATION OF CONFORMITY FOR GLASS PANELLED LIFT DOORS (Lift Directive 2014/33/EU)  
The glass panelled lift doors supplied conform To Standard EN81-1/2:1998 or EN81-20:2014.

**NOTE:**

- 1 - panel clad only by Sematic
- 2 - for the car door: by customer

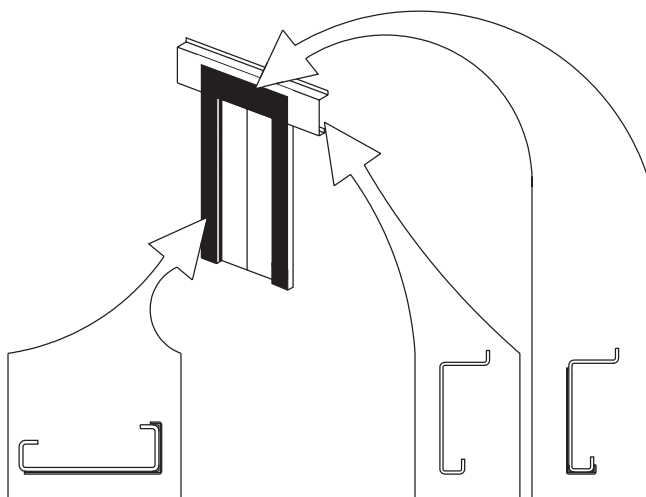
## CLADDINGS

S 22

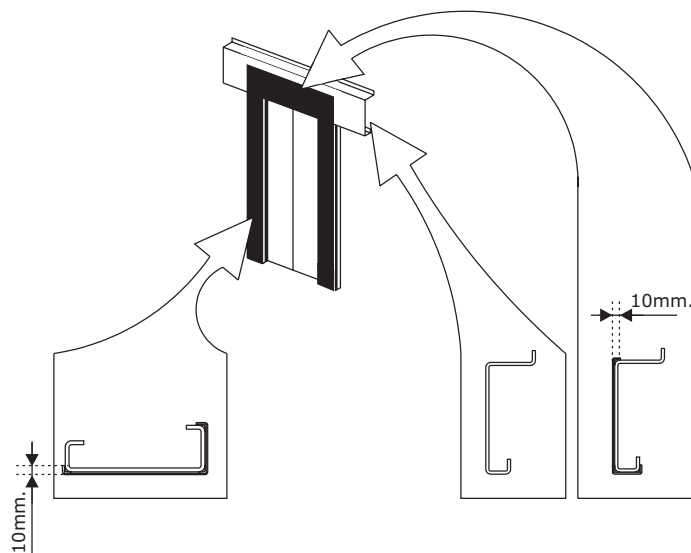
## LANDING DOOR AND PORTAL CONSTRUCTION CODIFIED CLADDINGS

OPTION

- ☐ **CLADDING TYPE "A" (STANDARD)**  
 VERKLEIDUNG TYP "A" (STANDARD)  
 RIVESTIMENTO TIPO "A" (STANDARD)



- ☐ **CLADDING TYPE "A2"**  
 VERKLEIDUNG TYP "A2"  
 RIVESTIMENTO TIPO "A2"


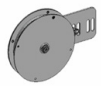


## APPLICATION RANGE


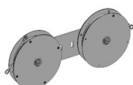

S 2Z

## LANDING DOOR CLOSING DEVICE APPLICATION RANGE

## Single spirator

	<b>A1</b> - cod. B122ABVX
	<b>A2</b> - cod. B122ABNX

## Double spirator

	<b>B1</b> - cod. B122ABVX
	<b>B2</b> - cod. B122ABYX
	<b>C</b> - cod. B122ABNX

## Counterweight

	<b>K</b> - cod. B062AACX
---	--------------------------

## APPLICATION RANGE

S 2Z

		TB										
2L-R	2000≤TH≤2500	1000	1100	1200	1300	1400	1500	1600	1700	1800	1900	2000
		A2	A2	K	K	K	K	K	K	K	K	K

		TB										
3L-R	2000≤TH≤2500	1000	1100	1200	1300	1400	1500	1600	1700	1800	1900	2000
		B2	B2	K	K	K	K	K	K	K	K	K

		TB										
2Z	2000≤TH≤2500	1000	1100	1200	1300	1400	1500	1600	1700	1800	1900	2000
		A1	A1	B1	B1	K	K	K	K	K	K	K

		TB												
4Z	2000≤TH≤2500	1000	1100	1200	1300	1400	1500	1600	1700	1800	1900	2000	2100	2200
		A1	A1	A1	C	C	C	C	B1	B1	B1	B1	B1	B1
	2000≤TH≤2500	2300	2400	2500	2600	2700	2800	2900	3000	3100	3200	3300	3400	3500
		C	K	K	K	K	K	K	K	K	K	K	K	K

		TB										
6Z	2000≤TH≤2500	1400	1500	1600	1700	1800	1900	2000	2100	2200	2300	2400
		A1	A1	A1	A1	A1	B2	B2	B2	B2	B2	K
	2000≤TH≤2500	2500	2600	2700	2800	2900	3000	3100	3200	3300	3400	3500
		K	K	K	K	K	K	K	K	K	K	K

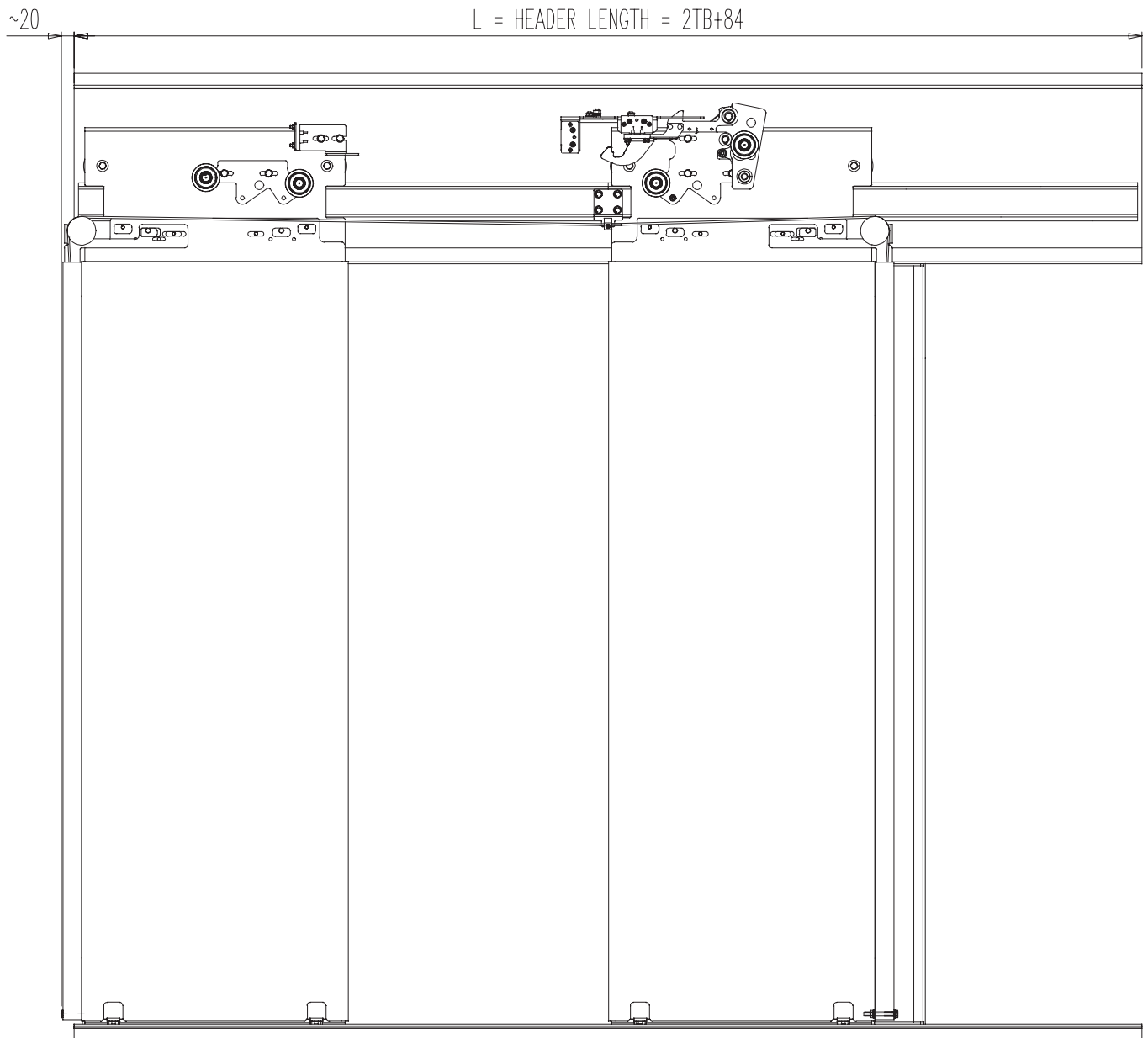


FOR TH&gt;2500 ALWAYS COUNTERWEIGHT

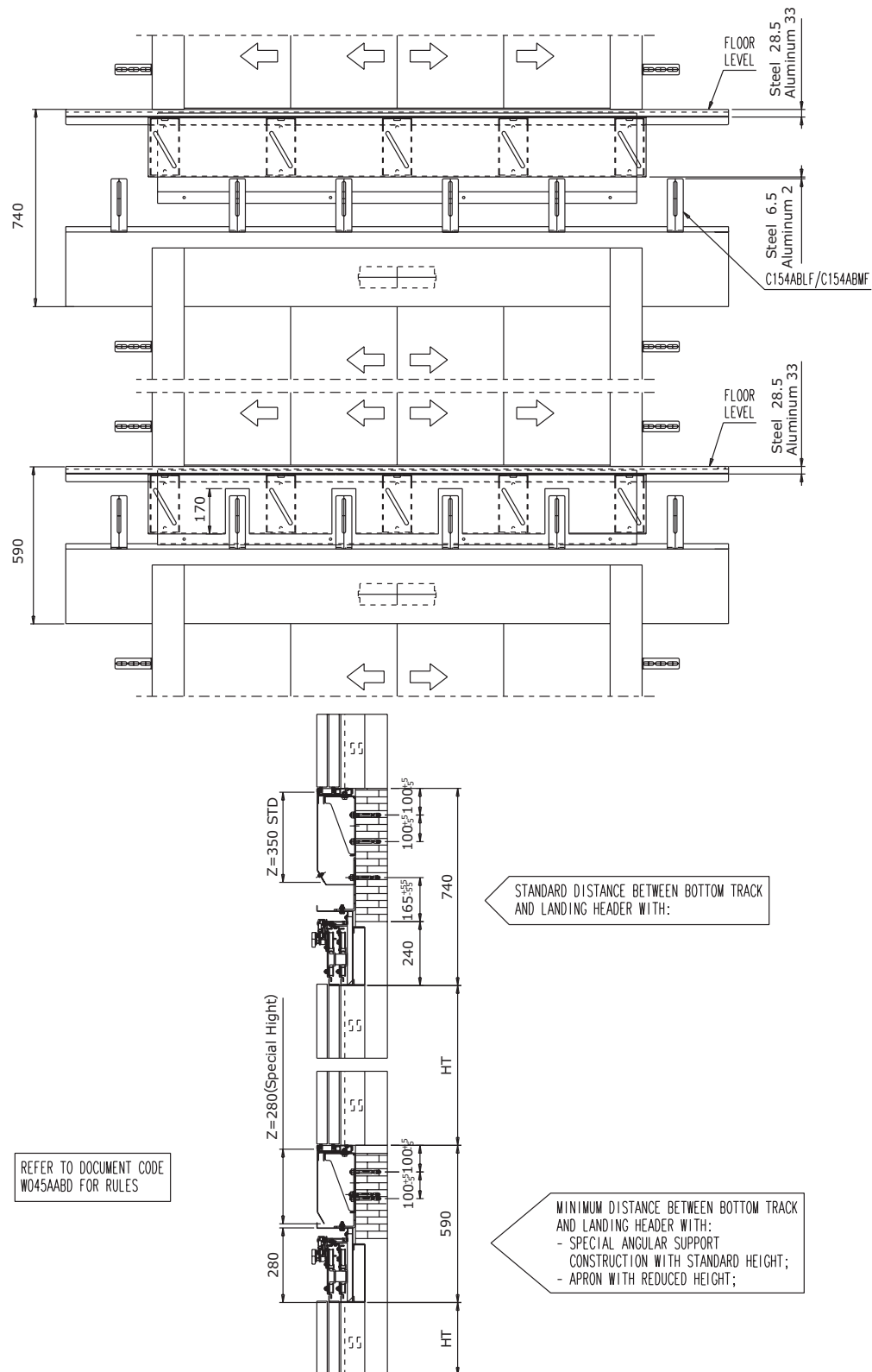


**COUNTERWEIGHT**

27

**COUNTERWEIGHT INSTALLATION**

### MINIMUM DISTANCE INTERFLOOR SCHEME



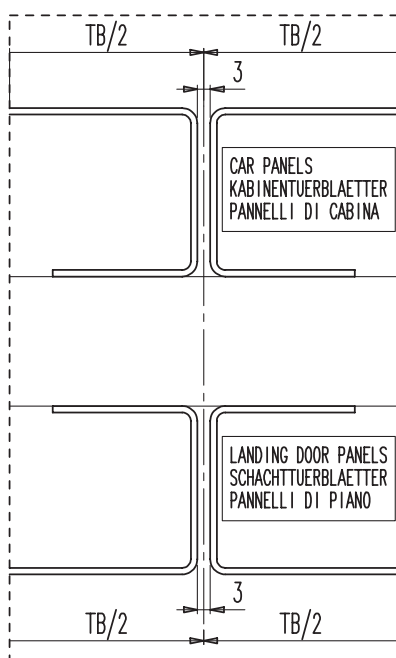
- The drawing shows a S4Z door
- Same considerations are applied to other door models

## BEATING PROFILES

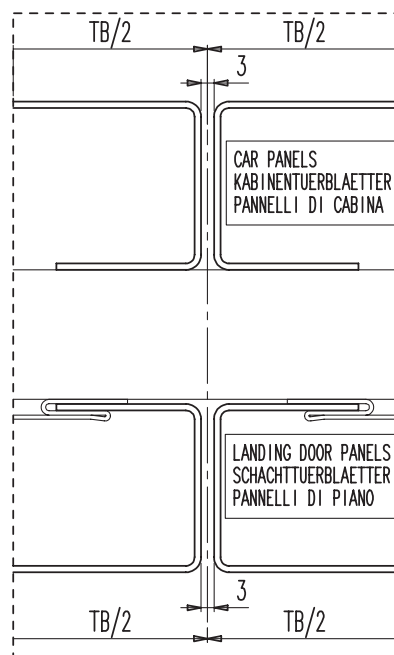
S 22

## BEATING PROFILES SCHEME

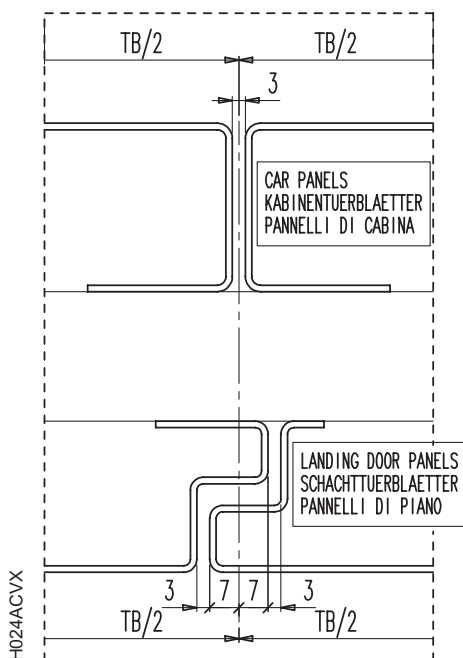
□ STANDARD



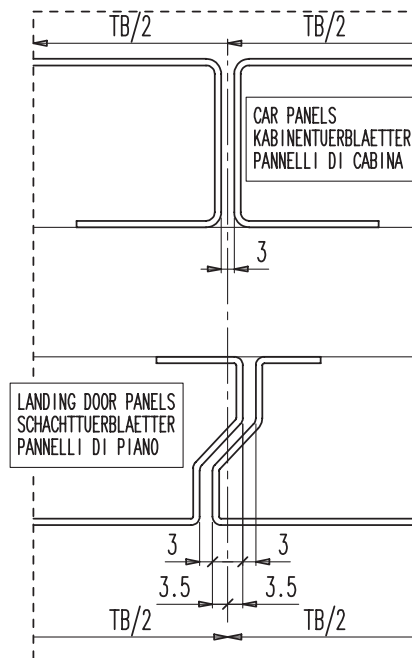
□ DIN18091



- BS476 E60    □ BS476 E1120  
 □ BS476 E120    □ BS476 E240  
 □ BS476 E160



- EN81-58 E160    □ EN81-58 E1120  
 □ EN81-58 EW60    □ E60 GOST 30247.3  
 □ EN81-58 E120    □ E160 GOST 30247.3



**DOOR CONFORMITY RULES IN RESPECT OF EN 81-20/50**

The door which is compliant to EN 81-20/50 must be equipped with the features mentioned below:

Item	STD	Option	Notes
Detector provision	X		The detector has to be compliant to EN 81-20/50
Detector		X	The detector has to be compliant to EN 81-20/50
Vision panel		X	The position of the car door vision panel must be the same as the landing door. No vision panel required on car side if the car remains open in stationary position
Man in the pit - S	X		
Car door lock	X		
Egress device - K	X		



*Other requirements related to EN81-20/50 are already part of the door's specification.  
For any further information please contact your sales reference*



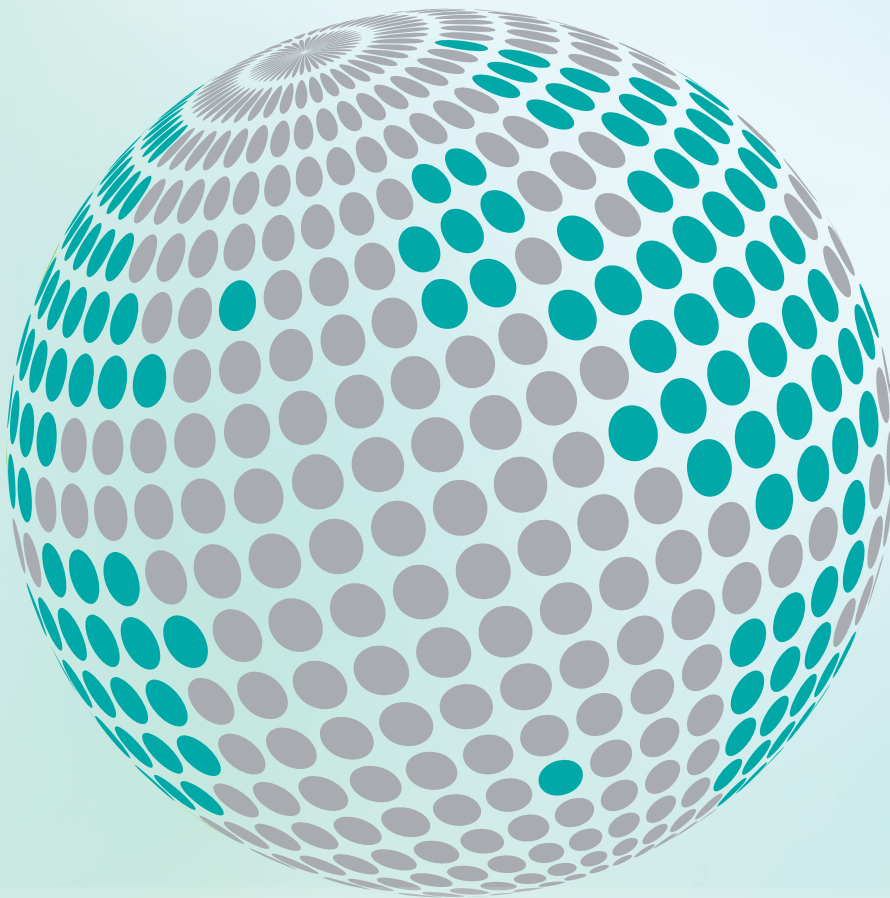
**OUR COMPONENTS ARE INTENDED FOR ELEVATOR USE ONLY**

**OUR COMPONENTS ARE INTENDED FOR ELEVATOR USE ONLY**





**YOUR GLOBAL PARTNER FOR COMPONENTS,  
MODULES AND SYSTEMS IN THE ELEVATOR INDUSTRY**



[www.wittur.com](http://www.wittur.com)

More information  
about Wittur Group  
available on-line.



**SELCON®**  
a WITTUR brand

**Liftmaterial**  
a WITTUR brand

**sematic®**  
a WITTUR brand