

# ADAPTA 2

## LIGHTWEIGHT ELEVATOR PASSENGER CAR



Residential



Hotel



Office



Shopping



Hospital



Lightweight Elevator Passenger Car

# ADAPTA 2

ADAPTA 2 is a lightweight elevator passenger car designed to offer a wide variety of finishes into a standard and easy to install structure.

## Certified

ADAPTA 2 fulfills all the requirements of the Lift Directive, as well as EN 81-20/50, 2006/42/CE Machinery Directive and subsequent modifications, AS 1735-1, GOST 33984.1 and GB 7588+XG1.

Wittur additionally offers option to comply with EN 81-70, EN 81-71 and CP2 S550.



## Features

- 320 kg - 1600 kg
- Wide range of sizes with a step of 1mm
- Special solutions for reduced headroom and reduced pit
- Fast and easy installation with common hand tools
- Designed to allow the installation of the car from the inside (except for the ceiling)
- Compatible with various car slings, traditional rope slings, and hydraulic slings
- Compatible with various car door operators
- Compatible with various COPs
- Available with a wide range of finishes, lighting and accessories (mirror, handrail, skirting, bumper, seat, ladder)

The image shows the interior of an elevator car. The walls are made of light-colored, vertically-ribbed panels. The ceiling is white with two large rectangular light fixtures and a grid of small circular ventilation holes. A stainless steel handrail runs along the side walls. On the left wall, there is a control panel with a small digital display and several buttons. The floor is a solid teal color. The entire scene is framed by a thick teal border.

## Standard Execution

- Ceiling in RAL 7032
- Car front return in the same material as the side walls
- Maximum rated load 1600 kg
- Arrangement for floor cladding by customer (max 25 mm thickness)

Installation of the walls is from the internal side and the car can be available with different car slings and doors.

# ADAPTA 2

## Product Structure



Wall panels	Self-standing type
Wall panels finishes	Stainless Steel / Painted Steel / Skinplate
Mirror position	Rear wall
Mirror width	Wide / narrow
Mirror length	Full or half length
Floor	PVC / Composite Stone / Metal / Linoleum / Vinylic
Handrail	Tubular straight / Tubular curved / Perimeter design
Handrail position	Rear wall / Right side or left side opposite to the COP
COP	Flushed WITTUR COP / Protruding WITTUR COP / Custom
Lighting	Embedded / Suspended (Special lighting as optional for both)

# Wall Panels

## Stainless Steel



2-S002 \*  
Leather D42  
AISI 304



2-S005 \*  
Linen D25  
AISI 304



2-S008 \*  
Karo D21  
AISI 304



2-S010 \*  
Satin Finish Grit 240  
AISI 304



2-S011 \*  
Scotch Brite  
AISI 304



2-S012  
Hairline  
AISI 304



2-S014 \*  
5WL  
AISI 304



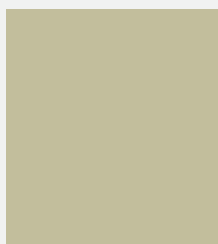
2-S016 \*  
Inox Mirror n°7  
AISI 304



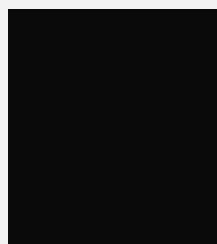
2-S050 \*  
Satin Finish Grit 320  
AISI 441

\* Standard finishes

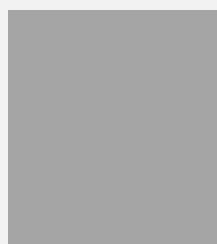
## Painted Steel



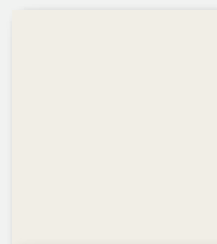
RAL 7032 \*  
Silica Grey



RAL 9005 \*  
Deep Black



RAL 9006 \*  
Aluminium Blanc



RAL 9010 \*  
Pure White



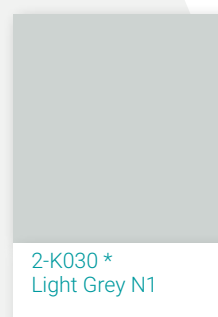
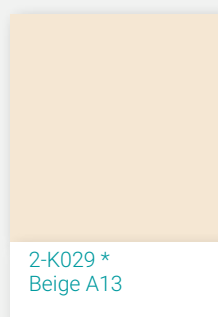
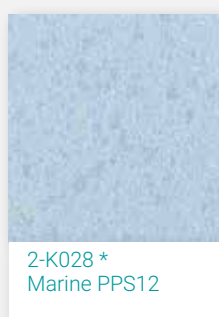
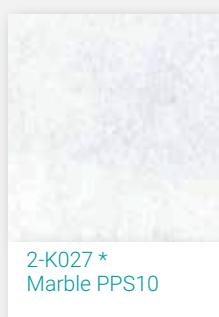
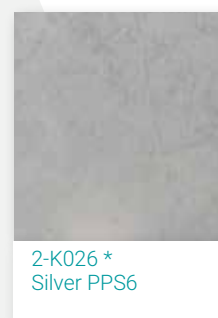
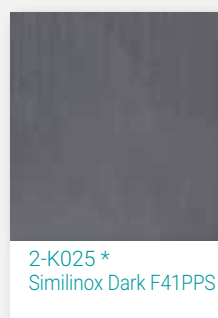
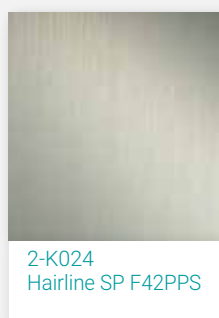
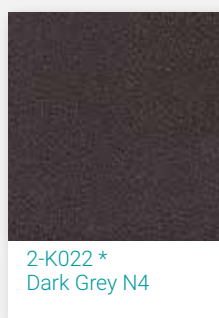
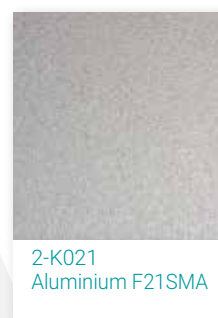
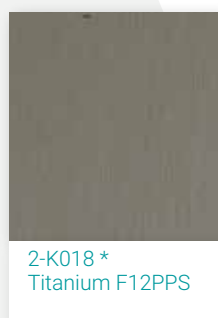
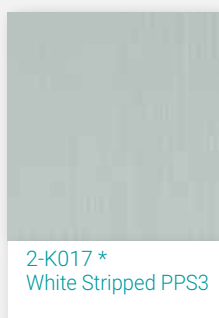
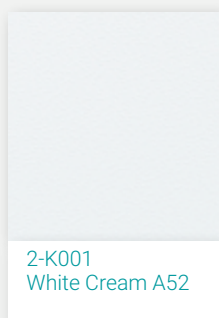
PERSONALIZED  
RAL Colors

\* Standard finishes

• Materials list is subject to change without notice. Non Standard Finishes may affect Lead Time.



## Skinplate



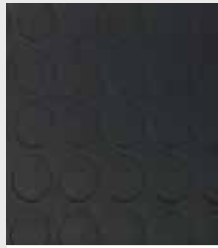
\* Standard finishes

These pictures are a representation of the proposed material finishings and may have some discrepancies respect to the real ones. If needed, please refer to our sales department and check physical samples before making your choice.

• Materials list is subject to change without notice. Non Standard Finishes may affect Lead Time.

# Floors

## PVC



2-G006  
Black (Dotted)



2-G009  
Grey (Dotted)



2-G010 \*  
PVC Marbled Grey



2-G030 \*  
ALTRO Cloud



2-G032 \*  
ALTRO Dolphin



2-G034  
ALTRO Midnight



2-G035  
ALTRO Black

## Composite Stone



2-R012  
Perla di Sabbia 617



2-R019  
Dove Tail 2402



2-R024  
Black Star 656



2-R025  
White Star 655

## Metal



2-G024 \*  
Knurled Aluminum



2-G029 \*  
Chequered St. Steel

\* Standard finishes

• Materials list is subject to change without notice. Non Standard Finishes may affect Lead Time.

These pictures are a representation of the proposed material finishings and may have some discrepancies respect to the real ones. If needed, please refer to our sales department and check physical samples before making your choice.



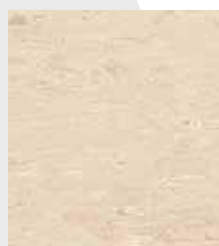
## Vinylic



2-Y002  
Blue Avio 8350



2-Y003 \*  
Antracite 8150



2-Y004  
Cipria 8300



2-Y007 \*  
Grigio Ghiaccio 8500



2-Y010 \*  
Dune



2-Y012  
Charcoal

## Linoleum



2-N003  
Black 2939



2-N004 \*  
Graphite 3048

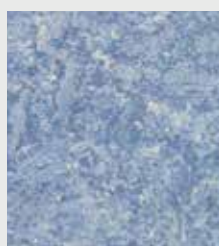


2-N005 \*  
Serene Grey 3146



2-N006  
Ink Blue 121 - 148

\* Standard finishes



2-N007 \*  
Fresco Blue 3055

\* Materials list is subject to change without notice. Non Standard Finishes may affect Lead Time.

# Handrails

Tubular  
straight design



Tubular  
curved design

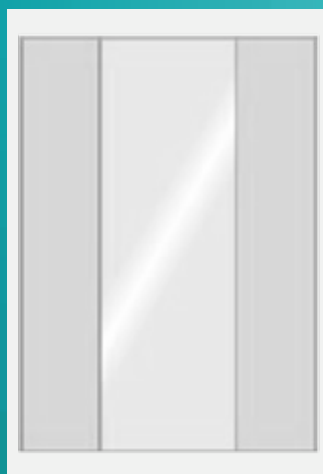


Perimeter  
design

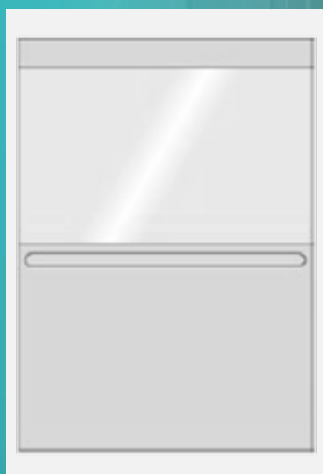


# Mirrors

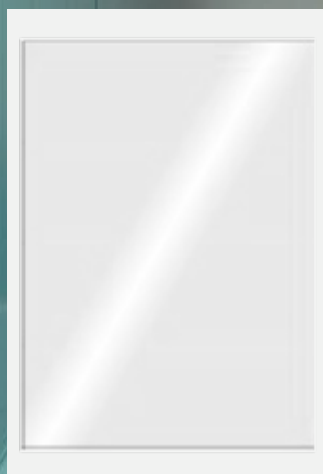
► In addition to the types listed below, Wittur can apply different kind of mirrors.



STANDARD / FULL HEIGHT



STANDARD / HALF HEIGHT



WIDE / FULL HEIGHT



WIDE / FULL HEIGHT (WITH SPLIT)

# Lightings

## Embedded

(Only with neon tube)



IL 42



Spotlights

## Suspended



IL 200



IL 201



IL 203



IL 205



IL 206



IL 207



IL 221 - Glass



IL 225



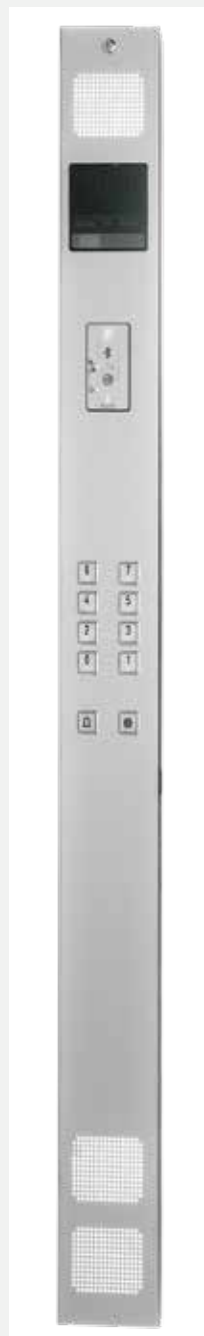
IL 300

(300x600mm or 600x600mm)

• Feasibility and visual differences should be checked. Please refer to the technical catalogue.

# Car Operating Panel

Wittur COPs are available in different finishes both in full height and half height executions. Wittur can supply data plates with CE marking complete with the installers company logo. Besides standard options, Wittur can offer tailored solutions for special requirements upon request.



Flushed  
Wittur COP



Protruding  
Wittur COP

# Protections

## Skirtings



ZCXS60 - ZCXS100 - ZCXS120



ZC AFXSR 100

## Bumper Rails - Wood



PC L100

## Bumper Rails - PVC



PC G120

## Bumper Rails - Aluminium



PC A120

## Bumper Rails - Stainless steel



PC XS 120



PC XRS 150

# Rated Load Table

Rated Load	Nr. of Person	Minimum Available Car Area	Maximum Available Car Area
kg		m <sup>2</sup>	m <sup>2</sup>
320	4	0,79	0,98
450	6	1,17	1,31
630	8	1,45	1,66
800	10	1,73	2,01
1000	13	2,15	2,40
1275	17	2,71	2,95
1600	24	3,10	3,56

		Minimum Available Dimension	Maximum Available Dimension
		mm	mm
Car Internal Width	CIW	700	1400
Car Internal Depth	CID	900	2400



# Wittur Ecosystem of Solutions: Door-Car-Sling



WCF Sling - Adapta2 Car

Wittur car solutions are 100% compatible with the wide range of Wittur doors and slings for a perfect fit and easy installation.

Wittur cars are also compatible with most non-Wittur products. Please contact your local Wittur representative for further information.

## Wittur Doors

HYDRA PLUS	PEGASUS
HYDRA 3000	C-MOD
AUGUSTA EVO	2000B
ECOBUS	2000B-G
FINELINE®	2000B-MF

## Wittur Systems

W LINE
W LINE SLS
W LINE EQ

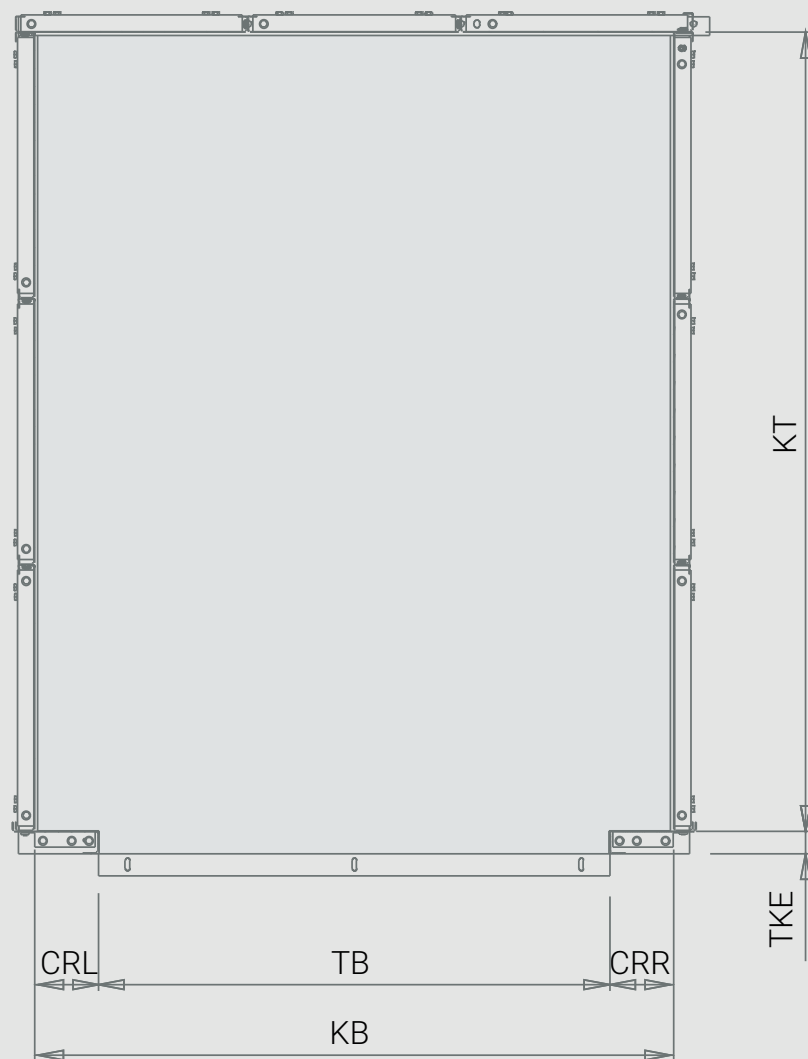
## Slings

ALGI_C 1450	TECHNOLIFT 4805
TULFER HC1	WITTUR AHT 6 CTR
TULFER HC2-HC3	WITTUR AHT 6
VIPAL 40235	WITTUR AHT 8
TECHNOLIFT 501	WITTUR AHT 11-13
TECHNOLIFT 1006	WITTUR WLF 06-10
EMERALD 100	WITTUR AED 6-8
EMERALD 200	WITTUR WCF 06
TECHNOLIFT MRU 1009	WITTUR WCF 10-16

# Elevator Cars

## Car Sizes

SECTION A-A



# Elevator Cars

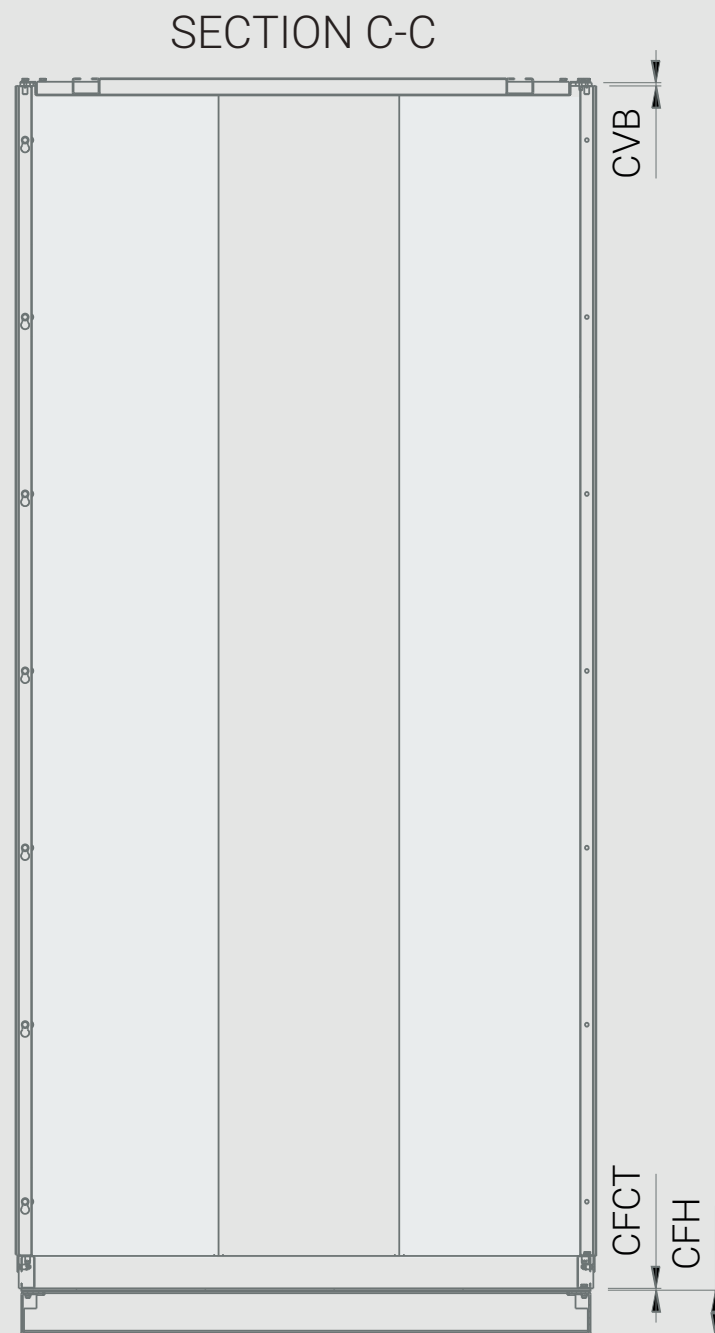
Car Sizes

SECTION B-B



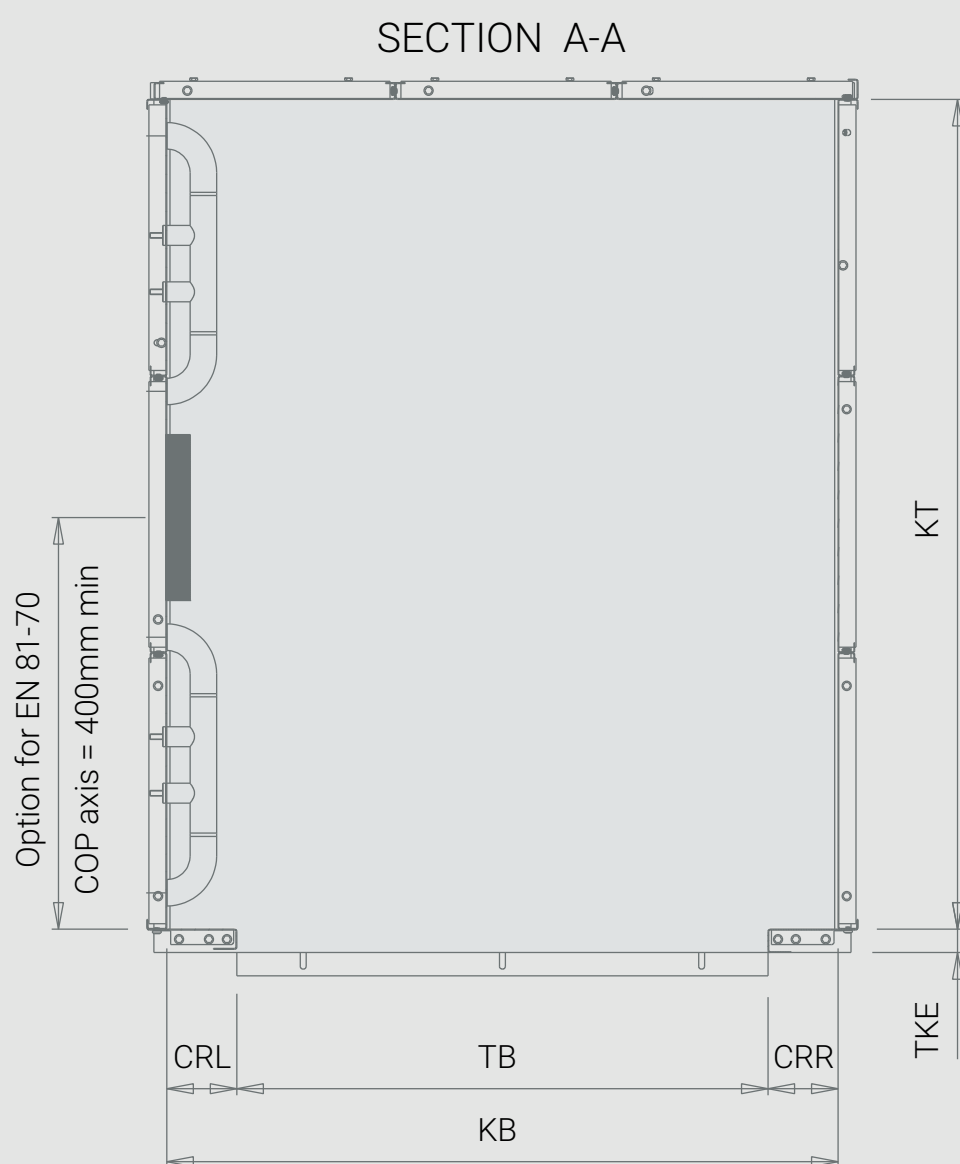
# Elevator Cars

## Car Sizes



# Elevator Cars

Car Sizes





WITTUR

**YOUR GLOBAL PARTNER** FOR COMPONENTS,  
MODULES AND SYSTEMS IN THE ELEVATOR INDUSTRY



WITTUR.COM



 **ADVANCING** THE ELEVATOR INDUSTRY®