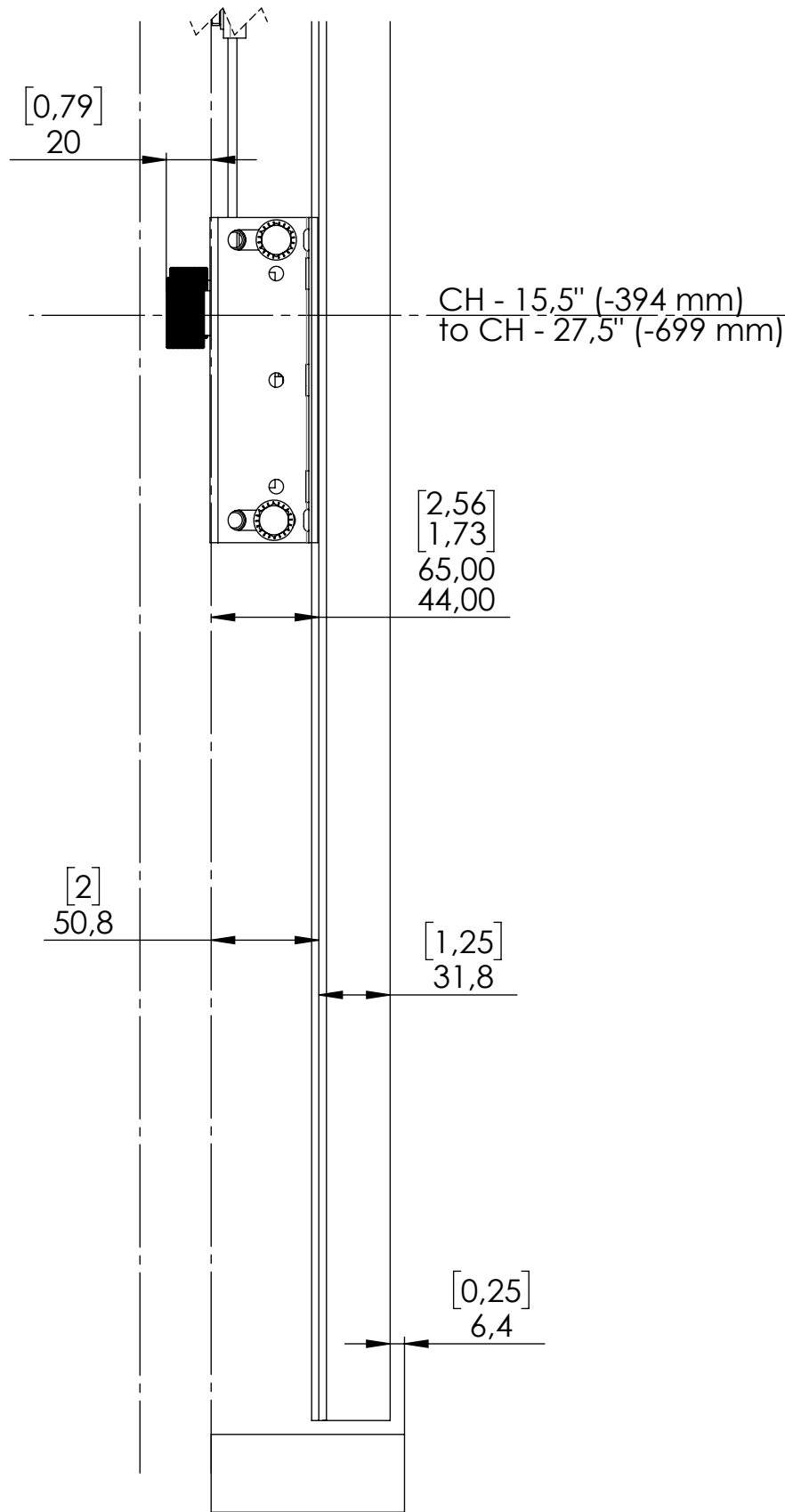
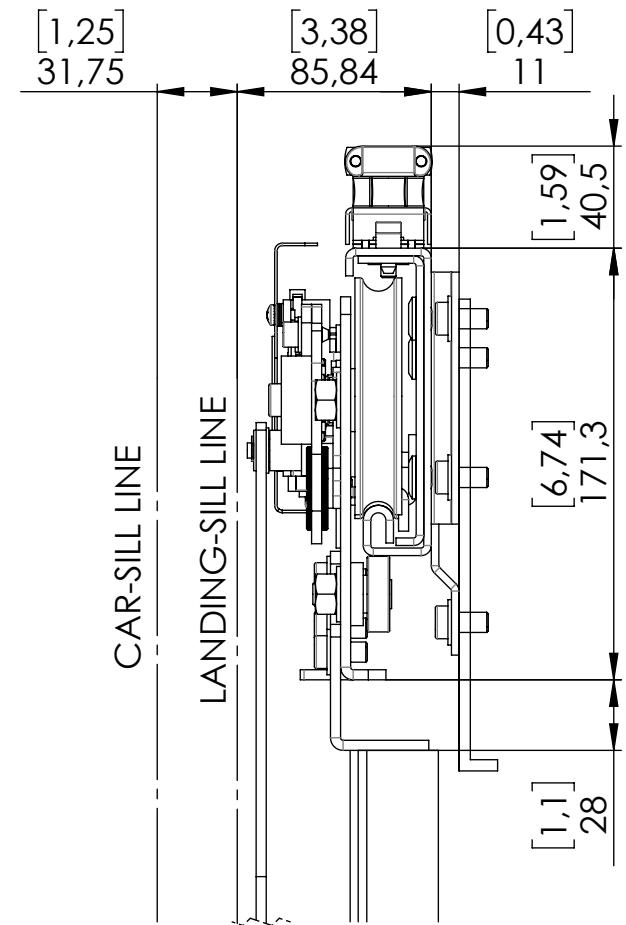


Released for Production

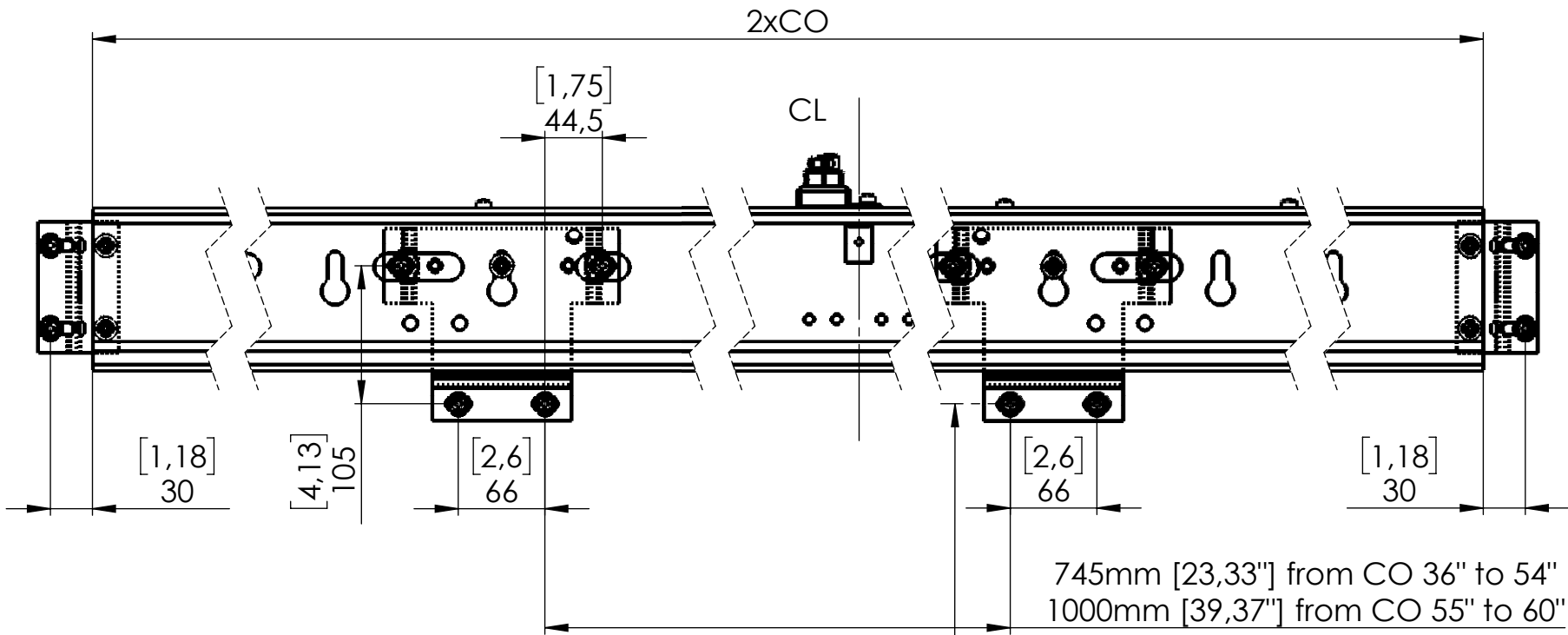
©WITTUR HOLDING GmbH

The reproduction, distribution and utilization of this document as well as the communication of its contents to others without express authorization is prohibited. Offenders will be held liable for the payment of damages. All rights reserved in the event of the grant of a patent, utility model or design. No part of this document may be reproduced or transmitted in any form or by any means electronic or mechanical, including photocopying and recording, or by any information storage or retrieval system. The copyright holder shall be liable for any third party's infringement of the rights of the patent holder. The copyright holder shall be liable for any third party's infringement of the rights of the patent holder. The copyright holder shall be liable for any third party's infringement of the rights of the patent holder.

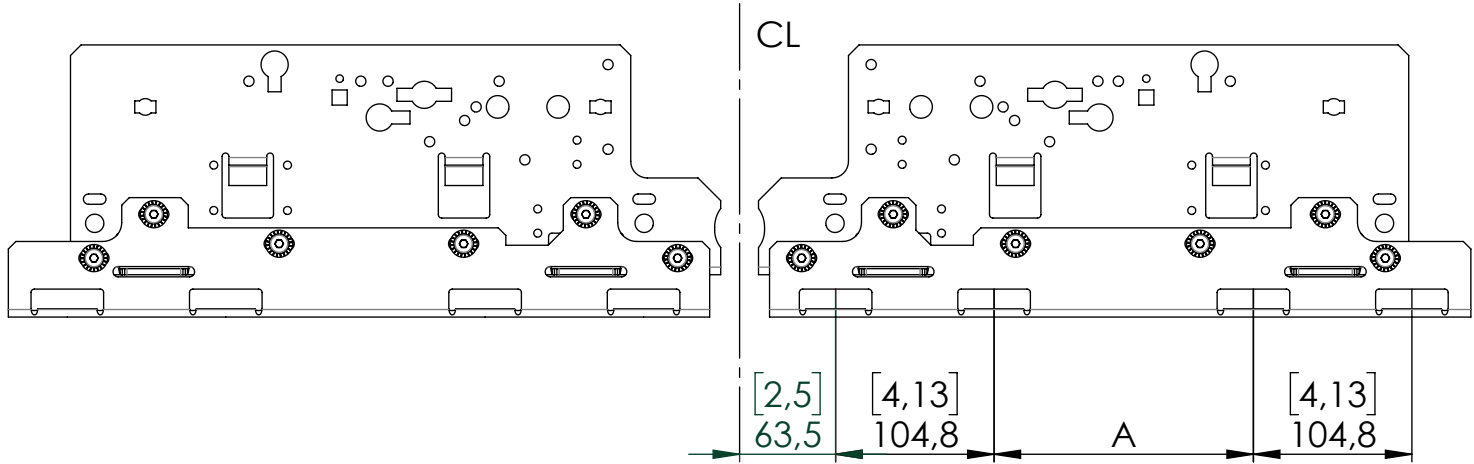


1	Landing Door Mechanism	1039602
2	Mechanism Bracket	1045941
3	Panel Adapter Angle	1044158
4	Lockrollers	0905040

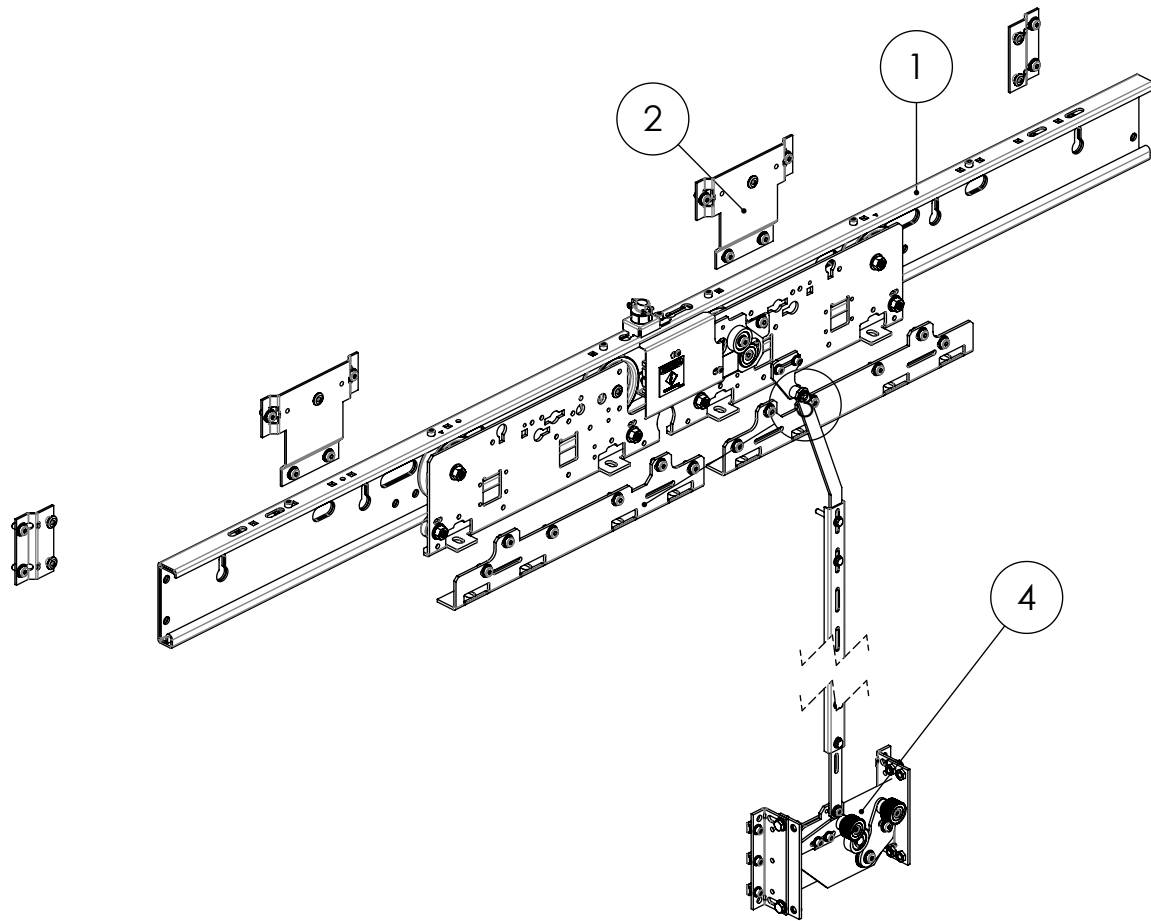
Mechanism Bracket 1045941



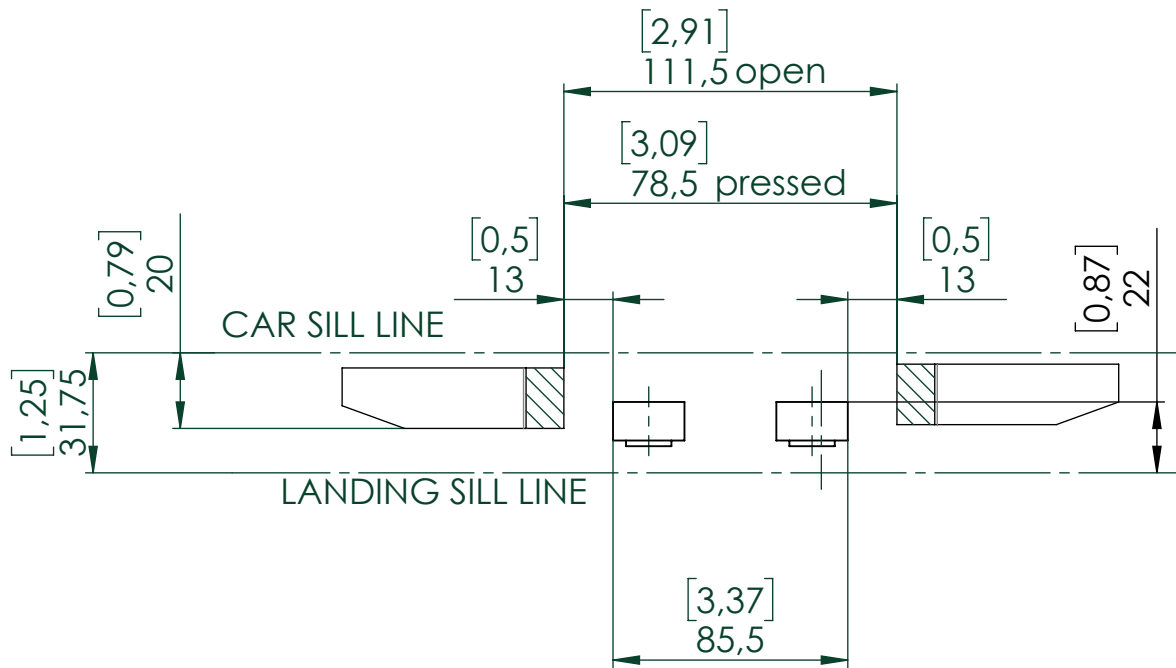
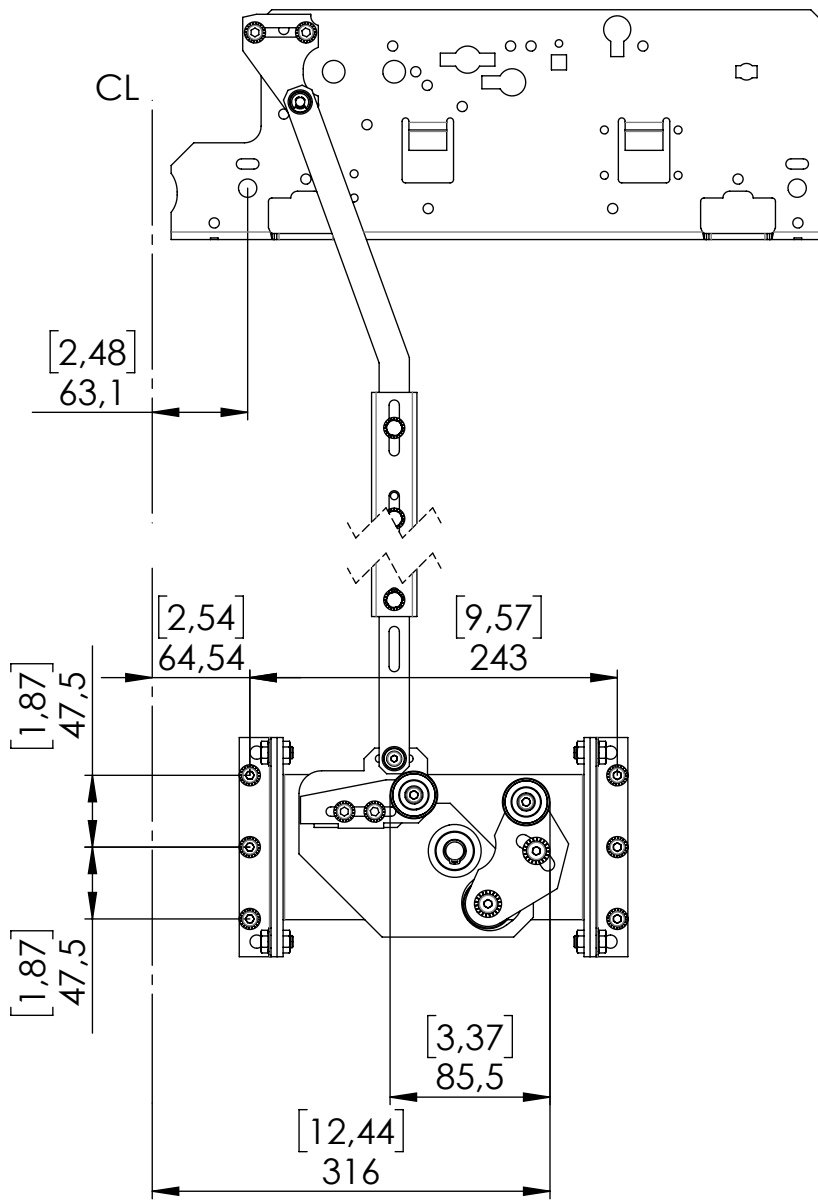
Panel Adapter Angle 1044158



60" (1524)	476.3 (18.75")
58" (1473.2)	450.9 (17.75")
56" (1422.4)	425.5 (16.75")
54" (1371.6)	400.1 (15.75")
52" (1320.8)	374.7 (14.75")
50" (1270)	349.3 (13.75")
48" (1219.2)	323.9 (12.75")
46" (1168.4)	298.5 (11.75")
44" (1117.6)	273.1 (10.75")
42" (1066.8)	247.7 (9.75")
40" (1016)	222.3 (8.75")
38" (965.2)	196.9 (7.75")
36" (914.4)	171.5 (6.75")
CO	A



Lockrollers 0905040



GEN. TOLERANCE WST-0003 TOLERANZE GEN. WST-0003 GT2	FUNCTIONAL CLASS CLASSE FUNZIONALE B	DESCRIPTION Quick installation guide LD DOVER ^SGV na - 2C	PRODUCT CATEGORY CATEGORIA PRODOTTO 2 - DOORS	PRODUCT CODE CODICE PRODOTTO SGV
SURFACE TEXTURE SYMBOLS SIMB. RUGOSITÀ SUPERFICIALE ISO1302	GEOM. TOLERANCE SYMBOLS SIMB. TOLLERANZE GEOM. ISO1101	SCALE SCALA 1:5	SIZE FORMATO A2	DESIGNED BY COSTRUTTO DA AT1KalpaD
WITTUR		DESCRIPTION ADD. DESCRIZIONE ADD. 1064574	REVISION REVISIONE -	DRAWN BY DISEGNATO DA AT1KalpaD
		SHEET FOGLIO NR 1/1	FIRST APPROVAL PRIMA APPROVAZIONE dollima	DATE DATA 22/10/2020