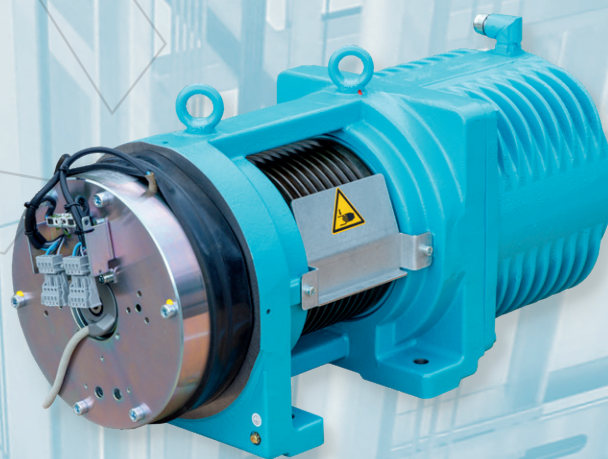


WSG-TS

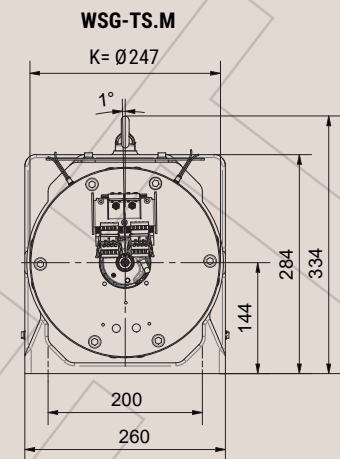
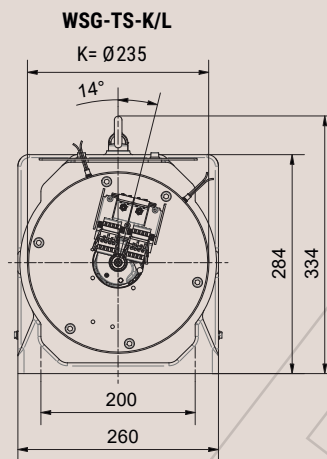
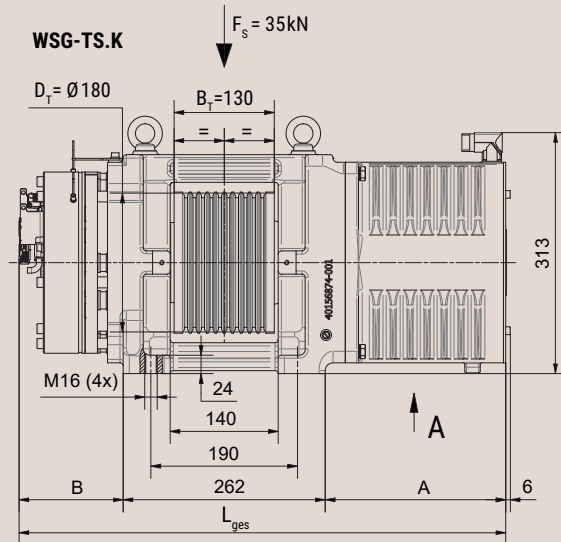
GEARLESS SYNCHRONOUS LIFT MACHINE

- ▶ Low-vibration and silent thanks to a perfectly matching magnet design
- ▶ Compliant with EN 81-20/50
- ▶ Developed for MRL- solutions with standard steel ropes
- ▶ Compact design for reduced headroom
- ▶ Shaft loads up to 35 kN



WSG-TS

GEARLESS SYNCHRONOUS LIFT MACHINE



WSG-	TS.K	TS.L	TS.M
Ø D _T	180	180	180
A	234	271	304
B	135	135	135
L _{ges}	631	668	703
m _G [kg]	165	175	185
F _s [kN]	35	35	35

FEATURES

- Compliant with EN 81-20/50
- Low-vibration and silent thanks to a perfectly matching magnet design
- Solid construction for permissible shaft loads at the traction sheave up to 35 kN
- Especially developed for MRL- solutions for ropes with a reduced headroom
- Safety brake system with electro- magnetical release, contacts for brake control
- EC type-examination certificate according to EN 81-20/50, can be used for UCM solution
- Synchronous motor, 16-pole, with high-efficiency permanent magnets, insulation class 155 (F)
- Variable options regarding voltage, speed, torque, measuring system and traction sheave parameters

Motor type		WSG-TS.K			WSG-TS.L			WSG-TS.M		
torque (S3-40 %)	M _N [Nm]	180			240			290		
max. torque	M _{max} [Nm]	320			430			520		
brake torque	M _{br} [Nm]	2x225			2x280			2x350		
traction sheave	D _T [mm]	180			180			180		
for loads up to	Q [kg]	630			900			1,350		
suspension		Tabelle gilt für 2 : 1								
Motor currents applicable to 500...620 V d.c. link voltage	v [ms]	n _N [rpm]	P _N [kW]	I _N [A]	n _N [rpm]	P _N [kW]	I _N [A]	n _N [rpm]	P _N [kW]	I _N [A]
	0.5	106	2.0	6.5	106	2.7	9.0	106	3.2	13.2
	0.63	134	2.5	9.0	134	3.4	12.0	134	4.1	15.3
	1.0	212	4.0	11.5	212	5.3	15.0	212	6.4	19.4

Reference values. Achievable nominal load depends on specific elevator system data.