

LIVING

HOME LIFT



Residential



Hotel



Homelift



Home Lift

LIVING

LIVING is the ideal solution for private houses and residential buildings.

This platform car solution is perfect for home-lift applications where flexibility of interiors is required.



Certified

LIVING fulfills all the requirements. It is compliant with the Machinery Directive - EN 81-41.

Wittur additionally offers custom option to comply with EN 81-70.





▲ Features

- 100 – 400 kg
- Travel height up to 20 m
- Application areas in private houses, apartments, residential buildings or small office buildings.
- Available with glass walls or self-standing & clad wall structure both
- Compatible with various car sling, traditional rope sling and hydraulic sling
- Compatible with various car door operators
- Available with a wide range of finishes
- Possibility to implement any COP on demand as special execution



Standard Execution

- Ceiling in skinplate
- Floor in linoleum
- Car front return in the same material as the side walls
- Maximum rated load is 400 kg
- Lighting in Spot LED predisposition.

LIVING

Product Structure

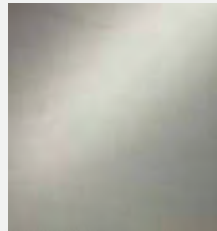
Wall panels	Self-standing & cladde type
Wall panels finishes	Stainless Steel / Painted Steel / Skinplate / Plastic Laminate
Mirror position	Lateral wall
Mirror width	Wide / narrow
Mirror length	Full or half length
Floor	PVC / Composite Stone / Linoleum / Vinylic
Handrail	Tubular straight / Perimeter design
Handrail position	Rear wall / Right side or left side opposite to the COP
COP	Cut out COP or Special Application
Lighting	Spot LED Predisposition or Suspended ceiling (as alternative)

Wall Panels

Stainless Steel



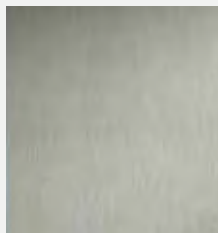
2-S002 *
Leather D42
AISI 304



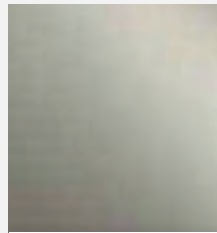
2-S005 *
Linen D25
AISI 304



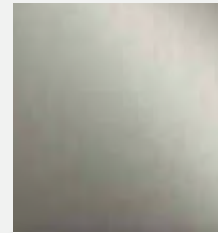
2-S008 *
Karo D21
AISI 304



2-S010 *
Satin Finish Grit 240
AISI 304



2-S011 *
Scotch Brite
AISI 304



2-S012
Hairline
AISI 304



2-S014 *
5WL
AISI 304



2-S016 *
Inox Mirror n°7
AISI 304



2-S050 *
Satin Finish Grit 320
AISI 441

* Standard finishes

These pictures are a representation of the proposed material finishings and may have some discrepancies respect to the real ones. If needed, please refer to our sales department and check physical samples before making your choice.

• Materials list is subject to change without notice. Non Standard Finishes may affect Lead Time.

Painted Steel



* Standard finishes

All these colors are provided as standard in half-glossy finishing

• Materials list is subject to change without notice. Non Standard Finishes may affect Lead Time.

Painted Steel



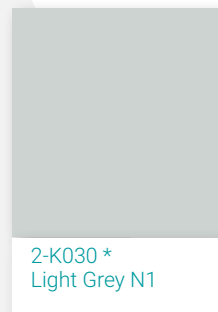
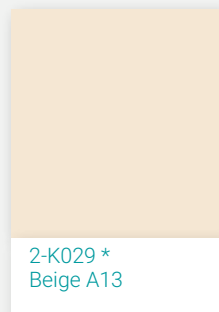
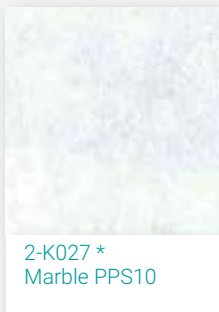
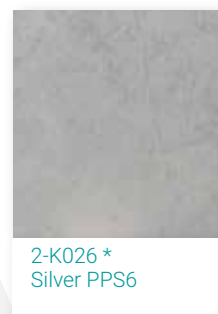
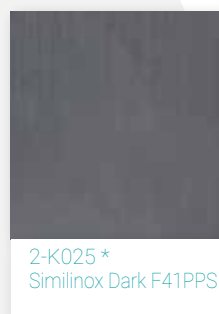
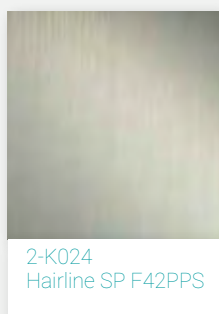
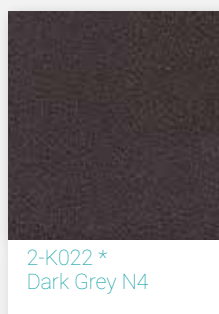
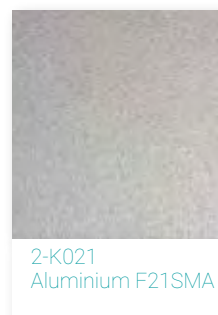
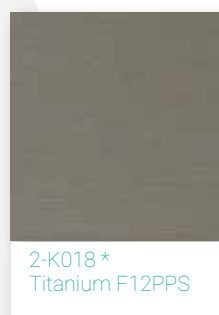
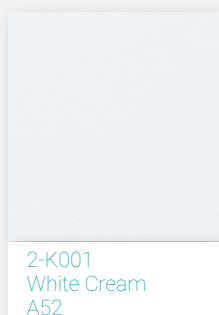
* Standard finishes

These pictures are a representation of the proposed material finishings and may have some discrepancies respect to the real ones. If needed, please refer to our sales department and check physical samples before making your choice.

All these colors are provided as standard in half-glossy finishing

• Materials list is subject to change without notice. Non Standard Finishes may affect Lead Time.

Skinplate

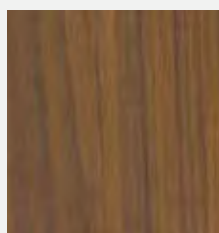


* Standard finishes

These pictures are a representation of the proposed material finishings and may have some discrepancies respect to the real ones. If needed, please refer to our sales department and check physical samples before making your choice.



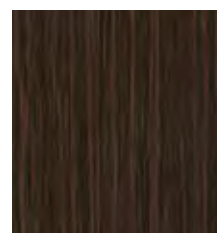
Plastic Laminate



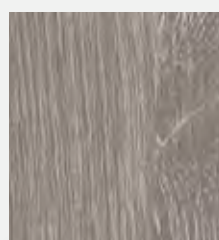
2-L082
Canaletto 4303



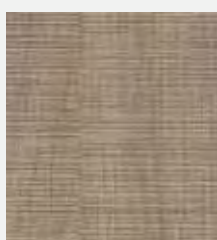
2-L083
Rovere Rhone 4367



2-L084
Legno Fino Moka 4485



2-L085
Rovere Fumo 4511



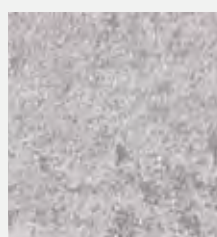
2-L086
Segato Tinto 4533



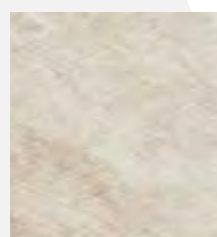
2-L087
Pino White Chic 4515



2-L089
Sixty Grigio 3318



2-L090
Corten Grigio 3331



2-L092
Dolomia 585



2-L093
Root 868



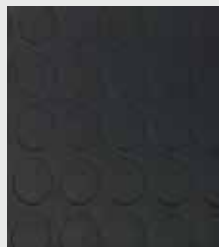
2-L094
Tivoli 546

These pictures are a representation of the proposed material finishings and may have some discrepancies respect to the real ones. If needed, please refer to our sales department and check physical samples before making your choice.

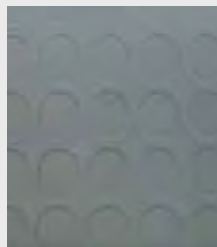
• Materials list is subject to change without notice. Non Standard Finishes may affect Lead Time.

Floors

PVC



2-G006
Black (Dotted)



2-G009
Grey (Dotted)



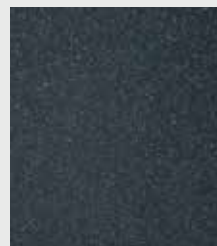
2-G010 *
PVC Marbled Grey



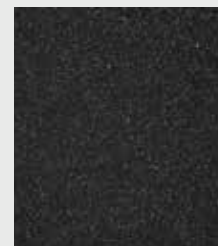
2-G030 *
ALTRO Cloud



2-G032 *
ALTRO Dolphin



2-G034
ALTRO Midnight

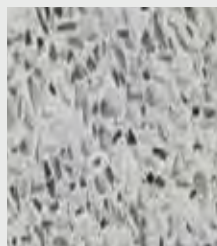


2-G035
ALTRO Black

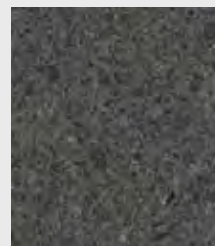
Composite Stone



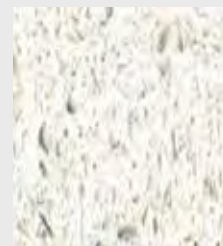
2-R012
Perla di Sabbia 617



2-R019
Dove Tail 2402



2-R024
Black Star 656



2-R025
White Star 655

* Standard finishes

These pictures are a representation of the proposed material finishings and may have some discrepancies respect to the real ones. If needed, please refer to our sales department and check physical samples before making your choice.

• Materials list is subject to change without notice. Non Standard Finishes may affect Lead Time.

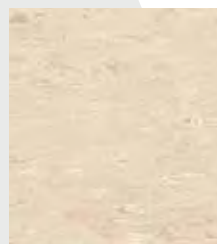
Vinylic



2-Y002
Blue Avio 8350



2-Y003 *
Antracite 8150



2-Y004
Cipria 8300



2-Y007 *
Grigio Ghiaccio 8500



2-Y010 *
Dune



2-Y012
Charcoal

Linoleum



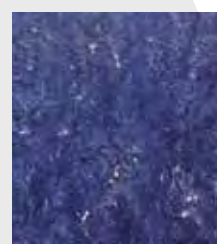
2-N003
Black 2939



2-N004 *
Graphite 3048

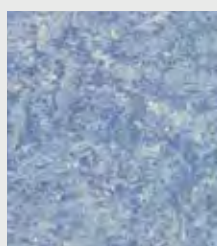


2-N005 *
Serene Grey 3146



2-N006
Ink Blue 121 - 148

* Standard finishes

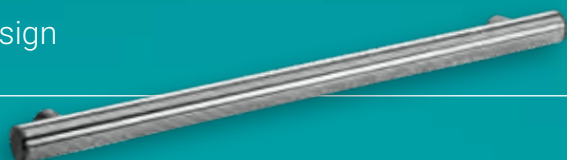


2-N007 *
Fresco Blue 3055

* Materials list is subject to change without notice. Non Standard Finishes may affect Lead Time.

Handrails

Tubular
straight design

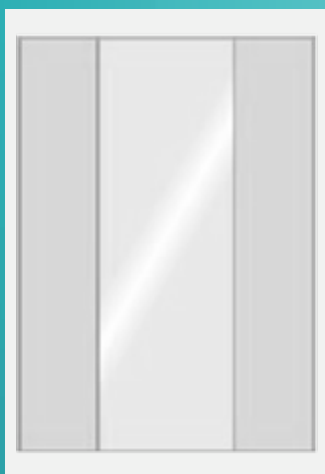


Perimeter
design

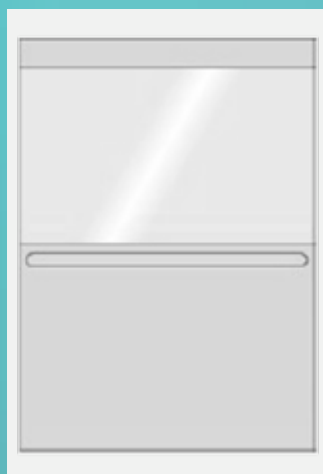


Mirrors

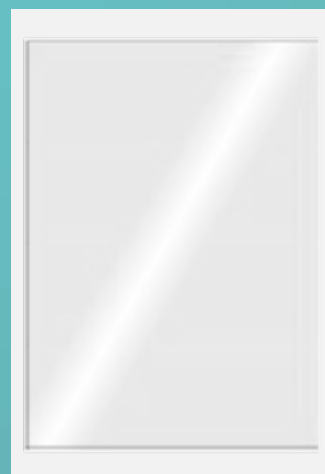
► In addition to the types listed below, Wittur can apply different kind of mirrors.



STANDARD / FULL HEIGHT



STANDARD / HALF HEIGHT



WIDE / FULL HEIGHT

Lightings

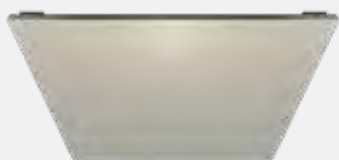
- **The standard lighting is the 3 LED SPOTS predisposition.** Wittur also can offer options for the suspended ceiling. For other solutions for your requirements, please ask feasibility.



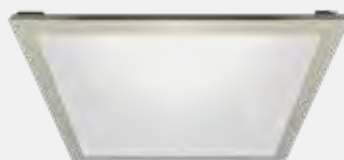
► 3 LED SPOTS



4 LED SPOTS



PLAIN



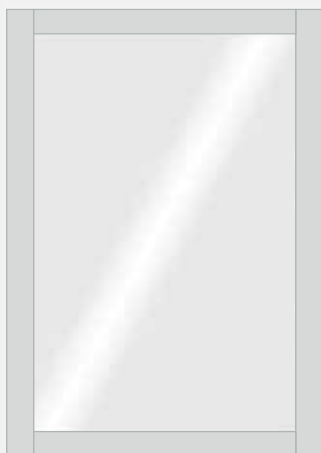
OPAL



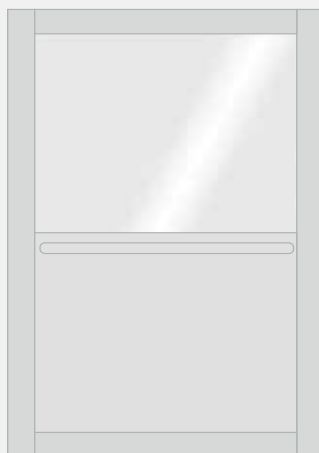
STARRY SKY

Glass Walls

- These options make the car interior more spacious and give the passenger a panoramic view while traveling between floors.



FULL GLASS



1/2 GLASS

Rated Load Table

Rated Load	Nr. Of Person	Elevator Speed	Nr. of Stops
kg		m/s	
100	1	0,15	Max. 7
180	2		
225	3		
300	4		
375	4	0,15	Max. 7
400	5		

		Minimum Available Dimension	Maximum Available Dimension
		mm	mm
Car Internal Width	CIW	600	1400
Car Internal Depth	CID	600	1400

Wittur Ecosystem of Solutions: Door-Car-Sling



Wittur car solutions are 100% compatible with the wide range of Wittur doors and slings for a perfect fit and easy installation.

Wittur cars are also compatible with most non-Wittur products. Please contact your local Wittur representative for further information.

Hydra Plus Door - Living Car

Wittur Doors

HYDRA PLUS
HYDRA 3000
ECO-BUS (as custom)
or
NO DOORS

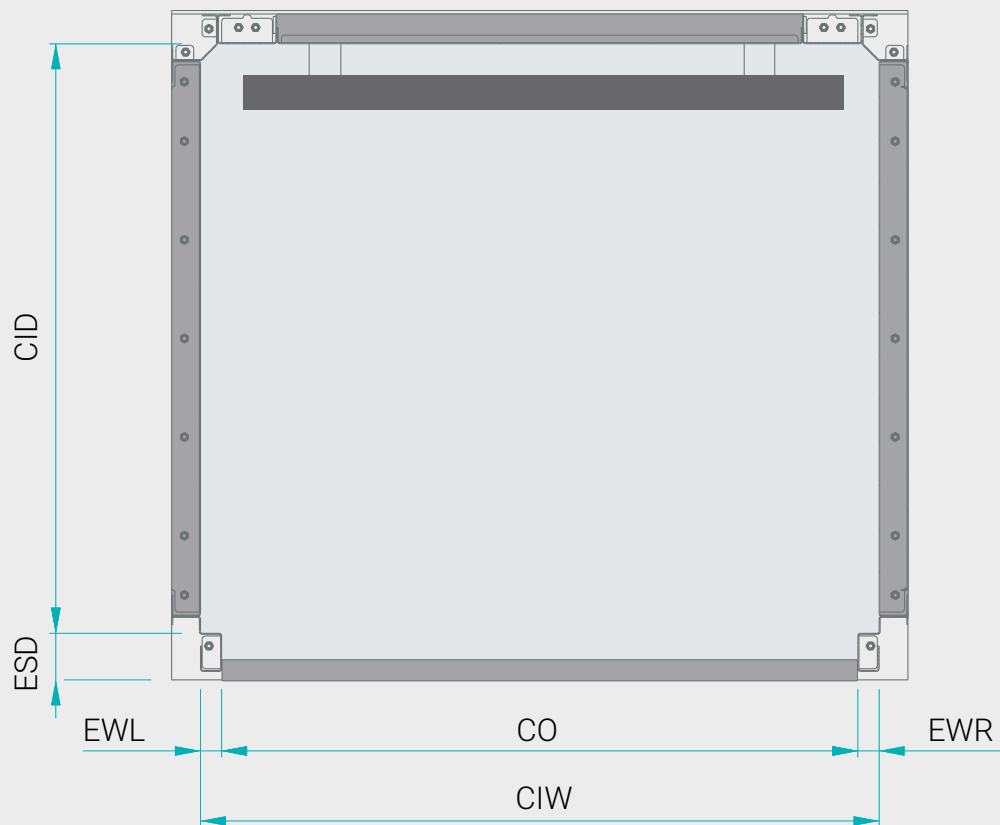
Slings

TECHNOLIFT T509
TECHNOLIFT 4805
F0 - F1

LIVING

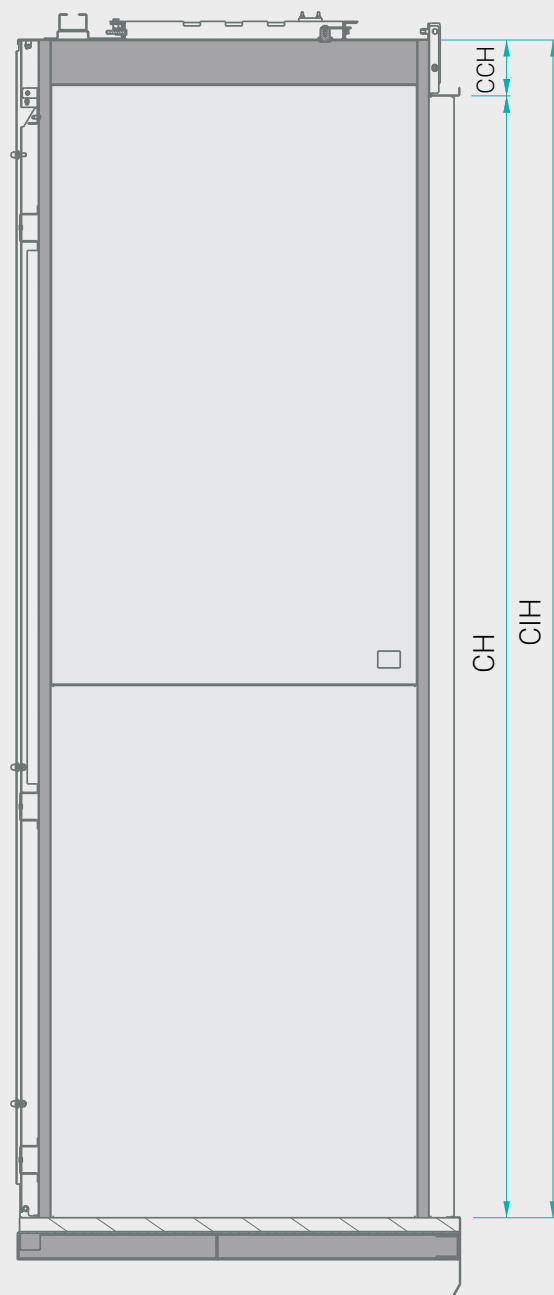
Elevator Cars

Car Sizes



Elevator Cars

Car Sizes





WITTUR

YOUR GLOBAL PARTNER FOR COMPONENTS,
MODULES AND SYSTEMS IN THE ELEVATOR INDUSTRY



SB.T 1005105 EN 01 - Ed 1 Rev 1 - 30th January 2023

Subject to change without notice!

WITTUR.COM



 **ADVANCING** THE ELEVATOR INDUSTRY®